

An Official Statistics Publication for Scotland

# Respite Care, Scotland 2009 (Final Figures)

Published: 23 February 2010  
ISBN: 978-0-7559-7836-6

## 1. Introduction

This Statistics Release presents respite care services provided or purchased by Local Authorities in Scotland. Respite Care is a service intended to benefit a carer and the person he or she cares for by providing a short break from caring tasks.

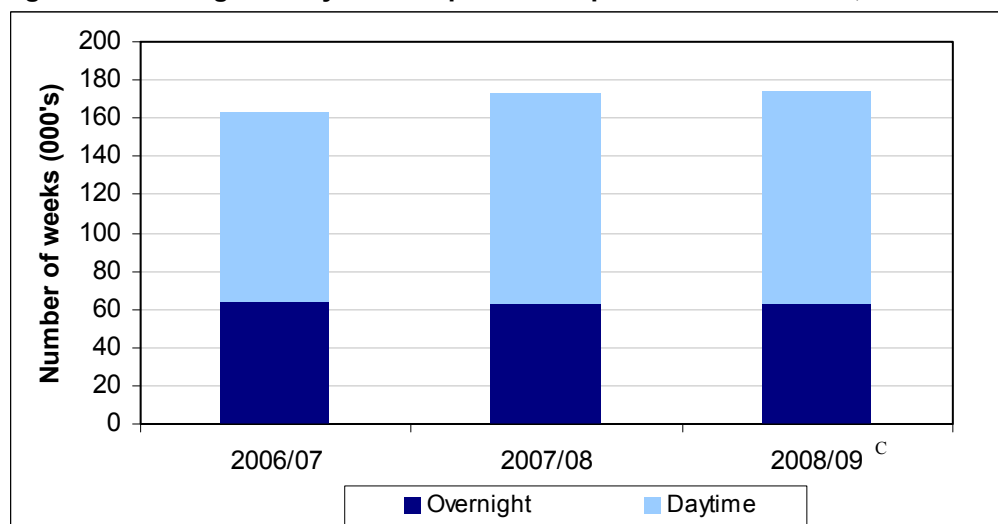
The figures used in this publication were originally collected and published by each Local Authority in Scotland. Local Authorities are required to collect and publish information on **respite nights** in a Care Home and **respite hours** provided at home as part of their Statutory Performance Indicators (SPIs). In this publication, the information has been presented and converted into **respite weeks** to allow presentation of an estimate of the **total number of respite weeks** provided each year in Scotland.

Please note that all figures in this release are final and replace the provisional figures published on 15<sup>th</sup> December 2009.

This release presents the results for the last three years to give a picture of:

- The total number of respite weeks provided by each Local Authority in Scotland
- The amount of daytime and overnight respite provided
- The amount of respite provision by age group

Figure 1 : Overnight & Daytime Respite weeks provided in Scotland, 2006/07 to 2008/09



Source: Audit Scotland SPI

<sup>c</sup> - Same methodology used as in 2007/08 making the figure comparable to 2007/08

## 2. Total number of respite weeks provided: Scotland

This statistical release presents the number of respite weeks provided to all age groups within Scotland. Please note that this release presents two different figures for 2008/09. A comparable figure based on the same methodology as 2007/08 and a figure based on a revised methodology, which is not comparable to 2007/08. Please see the background notes for more details.

### 2.1 Respite weeks provided to all ages

Table 1 presents two different figures for 2008/09. The first set of figures (2008/09<sup>C</sup>) presents figures using the same methodology as used in 2007/08.

This shows that the total number of respite weeks provided in Scotland has increased by 5.6% (9,240 weeks) from 163,640 in 2006/07 to 172,880 in 2007/08 and by 0.7% (1,150 weeks) to 174,030 in 2008/09.

Looking more closely at Table 1 and the type of respite provided it is clear that the majority of respite provided is daytime. In 2006/07 daytime respite accounted for 61.1% of all respite provided, this has increased each year and now accounts for 63.9% in 2008/09.

Table 1 also shows that the number of daytime respite weeks has increased each year. In 2006/07, 100,050 daytime respite weeks were provided, this increased by 9.9% to 109,980 in 2007/08 and by 1.1% to 111,230 in 2008/09.

At the same time, overnight respite has decreased each year, from 63,590 in 2006/07 to 62,810 in 2008/09, a reduction of 1.2%.

The second set of figures (2008/09<sup>N</sup>) in Table 1 presents figures based on a revised methodology where Local Authorities have identified ways to improve their methodology. These improvements happened because Local Authorities realised that they were not counting all respite provision and services which had been available for a number of years or were incorrectly counting a service as providing respite. This second set of figures (2008/09<sup>N</sup>) will be comparable with 2009/10 figures when published.

Further information on respite weeks provided in each Local Authority in Scotland is available in the Annexes to this publication.

**Table 1: Number of respite weeks provided in Scotland, 2006/07 to 2008/09**

	Number of respite weeks provided <sup>1</sup>			
	2006/07	2007/08	2008/09 <sup>C</sup>	2008/09 <sup>N</sup>
Overnight Respite Weeks	63,590	62,900	62,810	63,080
Daytime Respite Weeks	100,050	109,980	111,230	130,570
<b>Total</b>	<b>163,640</b>	<b>172,880</b>	<b>174,030</b>	<b>193,650</b>

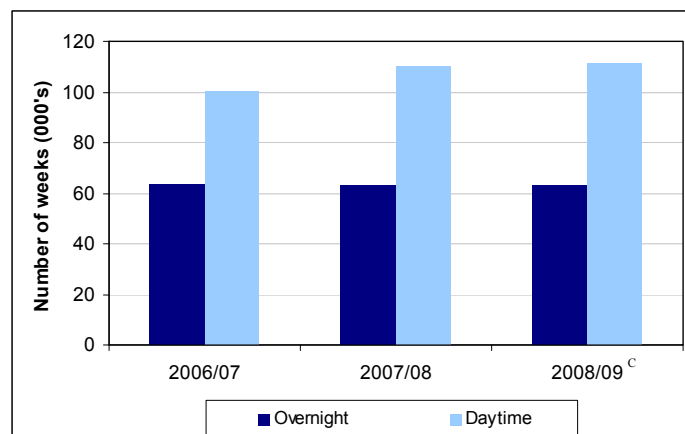
Source: Audit Scotland SPI

<sup>1</sup>All figures rounded to the nearest ten.

<sup>C</sup> - Same methodology used as in 2007/08 making the figure comparable to 2007/08

<sup>N</sup> - New methodology used making the figure incomparable to 2007/08

**Figure 2: Overnight and Daytime Respite weeks provided in Scotland, 2006/07 to 2008/09**



Source: Audit Scotland SPI

<sup>C</sup> - Same methodology used as in 2007/08 making the figure comparable to 2007/08

## 2.2 Respite weeks provided to older adults (Aged 65+)

Table 2 presents two different figures for 2008/09. The first set of figures (2008/09<sup>C</sup>) presents figures using the same methodology as used in 2007/08.

This shows that the total number of respite weeks provided to older people in Scotland has increased by 5.4% (4,610 weeks) from 85,270 in 2006/07 to 89,880 in 2007/08 and by 3.2% (2,860 weeks) to 92,740 in 2008/09.

Also Table 2 shows that the majority of respite provided is daytime. In 2006/07 daytime respite accounted for 56.3% of all respite provided, this has increased each year and now accounts for 61.1% in 2008/09.

Table 2 also shows that the number of daytime respite weeks has increased each year. In 2006/07, 48,020 daytime respite weeks were provided, this increased by 10.1% to 52,860 in 2007/08 and by 7.3% to 56,700 in 2008/09.

At the same time overnight respite has decreased each year, from 37,250 in 2006/07 to 36,040 in 2008/09, a reduction of 3.2%.

The second set of figures (2008/09<sup>N</sup>) in Table 1 presents figures based on a revised methodology where Local Authorities have identified ways to improve their methodology. These improvements happened because Local Authorities realised that they were not counting all respite provision and services which had been available for a number of years or were incorrectly counting a service as providing respite. This second set of figures (2008/09<sup>N</sup>) will be comparable with 2009/10 figures when published.

Further information on respite weeks provided in each Local Authority in Scotland is available in the Annexes to this publication.

**Table 2: Number of respite weeks provided to older adults (Aged 65+) in Scotland, 2006/07 to 2008/09**

	Number of respite weeks provided <sup>1</sup>			
	2006/07	2007/08	2008/09 <sup>C</sup>	2008/09 <sup>N</sup>
Overnight Respite Weeks	37,250	37,020	36,040	36,310
Daytime Respite Weeks	48,020	52,860	56,700	65,610
<b>Total</b>	<b>85,270</b>	<b>89,880</b>	<b>92,740</b>	<b>101,920</b>

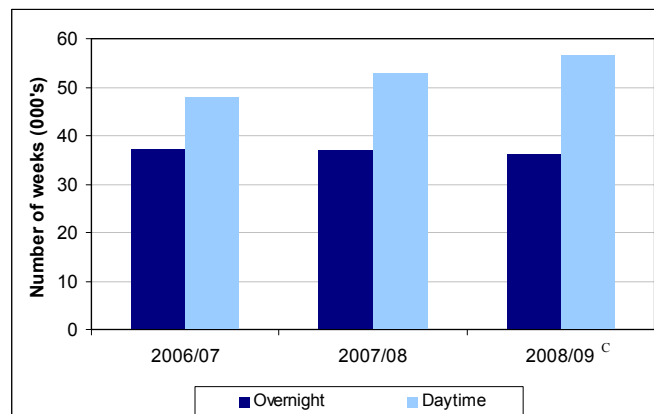
Source: Audit Scotland SPI

<sup>1</sup>All figures rounded to the nearest ten.

<sup>C</sup> - Same methodology used as in 2007/08 making the figure comparable to 2007/08

<sup>N</sup> - New methodology used making the figure incomparable to 2007/08

**Figure 3: Overnight and Daytime Respite weeks provided to older adults (Aged 65+) in Scotland, 2006/07 to 2008/09**



Source: Audit Scotland SPI

<sup>C</sup> - Same methodology used as in 2007/08 making the figure comparable to 2007/08

### 2.3 Respite weeks provided to adults (Aged 18 to 64)

Table 3 presents two different figures for 2008/09. The first set of figures (2008/09<sup>C</sup>) presents figures using the same methodology as used in 2007/08.

This shows that total number of respite weeks provided to adults aged from 18 to 64 in Scotland increased by 5.9% (3,280 weeks) from 55,770 in 2006/07 to 59,050 in 2007/08 and decreased by 1.0% (580 weeks) to 58,470 in 2008/09.

Further analysis of Table 3 shows that the majority of respite provided is daytime. Daytime respite accounts for about 68% over the three years of all respite provided.

In 2006/07, 38,120 daytime respite weeks were provided, this increased by 7.6% to 41,020 in 2007/08 and decreased by 3.2% to 39,700 in 2008/09.

Unlike older adults and young people, overnight respite for adults has increased each year, from 17,650 in 2006/07 to 18,760 in 2008/09, an increase of 6.3%.

The second set of figures (2008/09<sup>N</sup>) in Table 3 presents figures based on a revised methodology where Local Authorities have identified ways to improve their methodology. These improvements happened because Local Authorities realised that they were not counting all respite provision and services which had been available for a number of years or were incorrectly counting a service as providing respite. This second set of figures (2008/09<sup>N</sup>) will be comparable with 2009/10 figures when published.

Further information on respite weeks provided in each Local Authority in Scotland is available in the Annexes to this publication.

**Table 3: Number of respite weeks provided to adults (Aged 18 to 64) in Scotland, 2006/07 to 2008/09**

	Number of respite weeks provided <sup>1</sup>			
	2006/07	2007/08	2008/09 <sup>C</sup>	2008/09 <sup>N</sup>
Overnight Respite Weeks	17,650	18,030	18,760	18,760
Daytime Respite Weeks	38,120	41,020	39,700	50,170
<b>Total</b>	<b>55,770</b>	<b>59,050</b>	<b>58,470</b>	<b>68,940</b>

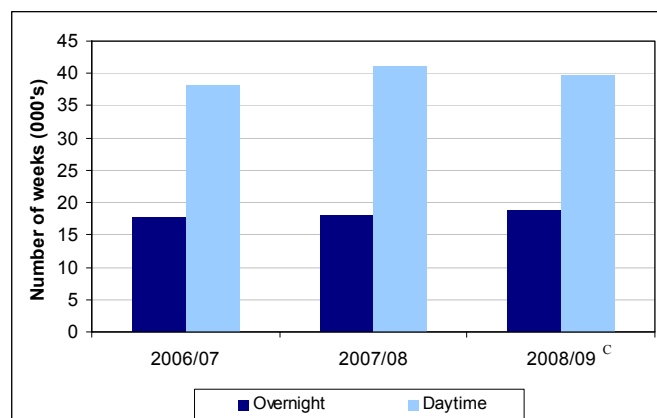
Source: Audit Scotland SPI

<sup>1</sup>All figures rounded to the nearest ten.

<sup>C</sup> - Same methodology used as in 2007/08 making the figure comparable to 2007/08

<sup>N</sup> - New methodology used making the figure incomparable to 2007/08

**Figure 4: Overnight and Daytime Respite weeks provided to adults (Aged 18 to 64) in Scotland, 2006/07 to 2008/09**



Source: Audit Scotland SPI

<sup>C</sup> - Same methodology used as in 2007/08 making the figure comparable to 2007/08

## 2.4 Respite weeks provided to young people (Aged 0 to 17)

Table 4 presents two different figures for 2008/09. The first set of figures (2008/09<sup>C</sup>) presents figures using the same methodology as used in 2007/08.

This shows that the total number of respite weeks provided to young people aged from 0 to 17 in Scotland increased by 5.9% (1,340 weeks) from 22,610 in 2006/07 to 23,950 in 2007/08 and decreased by 4.7% (1,120 weeks) to 22,830 in 2008/09.

Looking more closely at Table 4 shows that the majority of respite provided is daytime. In 2006/07 daytime respite accounted for 61.6% of all respite provided, this increased in 2007/08 to 67.2% and decreased in 2008/09 to 65.0%.

In 2006/07, 13,920 daytime respite weeks were provided, this increased by 15.7% to 16,100 in 2007/08 and decreased by 7.9% to 14,830 in 2008/09.

Overnight respite has decreased each year from 8,690 in 2006/07 to 8,000 in 2008/09, a decrease of 7.9%. Between 2007/08 and 2008/09 there was an increase of 1.9% from 7,850 weeks to 8,000 weeks.

The second set of figures (2008/09<sup>N</sup>) in Table 4 presents figures based on a revised methodology where Local Authorities have identified ways to improve their methodology. These improvements happened because Local Authorities realised that they were not counting all respite provision and services which had been available for a number of years or were incorrectly counting a service as providing respite. This second set of figures (2008/09<sup>N</sup>) will be comparable with 2009/10 figures when published.

Further information on respite weeks provided in each Local Authority in Scotland is available in the Annexes to this publication.

**Table 4: Number of respite weeks provided to young people (Aged 0 to 17) in Scotland, 2006/07 to 2008/09**

	Number of respite weeks provided <sup>1</sup>			
	2006/07	2007/08	2008/09 <sup>C</sup>	2008/09 <sup>N</sup>
Overnight Respite Weeks	8,690	7,850	8,000	8,000
Daytime Respite Weeks	13,920	16,100	14,830	14,790
<b>Total</b>	<b>22,610</b>	<b>23,950</b>	<b>22,830</b>	<b>22,790</b>

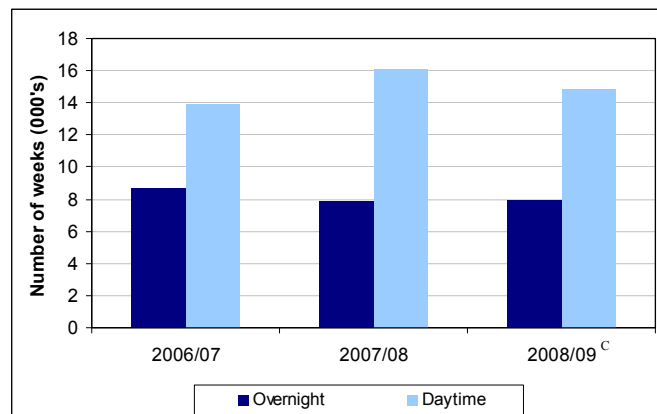
Source: Audit Scotland SPI

<sup>1</sup>All figures rounded to the nearest ten.

<sup>C</sup> - Same methodology used as in 2007/08 making the figure comparable to 2007/08

<sup>N</sup> - New methodology used making the figure incomparable to 2007/08

**Figure 5: Overnight and Daytime Respite weeks provided to young people (Aged 0 to 17) in Scotland, 2006/07 to 2008/09**



Source: Audit Scotland SPI

<sup>C</sup> - Same methodology used as in 2007/08 making the figure comparable to 2007/08

### **3. Background information on the collection of the data**

#### **3.1 Data Sources**

##### **Audit Scotland**

This data is provided to Audit Scotland by all Local Authorities in Scotland as one of the Statutory Performance Indicators (SPIs). The information is collected and published locally by each council in Scotland. Audit Scotland publishes information about the comparative performance of councils across Scotland in a compendium of all the data. These are available from [www.audit-scotland.gov.uk/performance/index.php](http://www.audit-scotland.gov.uk/performance/index.php), but please note that the figures have been superseded with those presented in this publication.

#### **3.2 Understanding the Statistics in this Report.**

All information in this Statistics Release is based on a year from 1st April to 31st March.

In order to provide an estimate of total respite provision across Scotland, respite nights and respite hours have been converted into respite weeks. In order to calculate this, seven respite nights equal one respite week and 52.5 hours equal one respite week. This standard method was agreed by CoSLA and the Scottish Government.

The figures published in this Statistics Release were first published on 15 December 2009 as provisional. Since December 2009, comprehensive validation of these figures has been carried out with all 32 Local Authorities in Scotland.

This involved an initial questionnaire being sent to all Local Authorities asking for further details regarding the methods they use to extract this data, what they count as respite and the reasons for any large increases/decreases in figures between 2007/08 and 2008/09.

As part of the validation exercise, Local Authorities were asked to confirm that the data they had previously published was correct.

##### **Overnight respite**

Six Local Authorities identified errors in the previously published overnight respite data and provided revised figures for final publication. They are:

- Aberdeenshire – revised Older Adults (aged 65+) and Adults (aged 18 to 64) figure for 2008/09
- Dundee City – revised Adults (aged 18 to 64) figure for 2007/08
- Moray – revised Adults (aged 18 to 64) figure for 2006/07 and Young people (aged 0 to 17) figure for 2006/07 and 2007/08
- Stirling – revised Young people (aged 0 to 17) figure for 2008/09
- West Dunbartonshire – revised Older Adults (aged 65+) figure for 2006/07
- West Lothian – revised Older Adults (aged 65+) and Adults (aged 18 to 64) figure for 2008/09

##### **Daytime respite**

Four Local Authorities identified errors in the previously published daytime respite data and provided revised figures for final publication. They are:

- Dundee City – revised Adults (aged 18 to 64) figure for 2007/08 and 2008/09
- East Renfrewshire – revised Adults (aged 18 to 64) figures for 2007/08
- Moray – revised Older Adults (aged 65+), Adults (aged 18 to 64) and Young people (aged 0 to 17) figure for 2007/08
- Orkney Islands – revised Adults (aged 18 to 64) figure for 2007/08

### **3.2.1 Methodology used by Local Authorities**

Local Authorities were asked to provide full details of the methodology they use to identify respite provision based on the Audit Scotland guidance.

The collection of respite data is something that has proved to be very complex for Local Authorities to capture. This means that each Local Authority may use a variety of data collection methods and sources of information to collect the required information as specified in the Audit Commission guidelines. (Refer to Annex 7). The data is collected from either management/financial information systems, from manual records or direct from private/voluntary respite suppliers and is most commonly a combination of these data sources. The data will also incorporate a number of different services depending on the services available within a Local Authority, examples of the services included are;

- Day Care
- Home Care
- Short Breaks/Holiday breaks
- Direct payments

The Audit Commission Guide for 2005/06 and 2006/07 stated “Where a single episode of respite care involves both daytime and overnight support, count both the nights and the daytime hours” (p50). This sentence was removed from the guidance for 2007/08 onwards.

Our investigations show that seven Local Authorities are counting respite as both daytime and overnight support, when the services are received in the same episode of respite care. These are:

- Clackmannanshire
- East Renfrewshire
- Edinburgh
- Fife
- Inverclyde (only for Respite provided to a small number of clients)
- Moray (only for Respite provided in the home)
- West Dunbartonshire (only for Respite provided to Young people (aged 0 to 17))

On 19 May 2010, the number of Local Authorities has been changed from eight to seven due to a question being misinterpreted during the data validation exercise.

Overall respite provision in these areas may appear to be higher than other areas because they are, in effect, more than double counting their Care Home and Homecare respite provision. If a client has a week of respite in a Care Home, then most Local Authorities simply count this as 7 nights (=1 respite week). If a Local Authority counts this as 7 nights and 12 hours for each of 7 days then this is equal to 2.6 respite weeks.

### **3.2.2 Methodology changes over time**

Local Authorities were asked whether they used exactly the same methodology to measure respite provision in 2007/08 and 2008/09. The majority of Local Authorities used the same methodology for both years which means that their figures should be comparable over time. Please note that the Local Authorities were not asked if any methodology changes were made between 2006/07 & 2007/08, therefore these figures may not be comparable for all Local Authorities.

Ten Local Authorities said that they had changed their methodology between 2007/08 and 2008/09. In many cases, Local Authorities began counting services which had been running for some time but which had not previously been included in the figures. In these cases, we asked the Local Authorities to provide figures for 2008/09 using the same methodology they had used in 2007/08. This allows us to see any genuine increase in services provision in 2008/09.

This means that two sets of figures are published for 2008/09 as follows:

- 2008/09 (Comparable) - This figure is produced using the same methodology as was used in 2007/08 and is therefore comparable with 2007/08.
- 2008/09 (New) - This figure may use different methodology from 2007/08, but is believed to be an improved count of respite by the Local Authorities concerned and will be comparable with the 2009/10 figure when published.

Further details on the Local Authorities who changed their methodology is given below:

- Aberdeen City – Prior to 2008/09, included Direct Payments, after school clubs and play schemes in the Children daytime respite figure. From 2008/09 these were excluded. Revised Young people (aged 0 to 17) daytime figure to allow for comparison with 2007/08.
- Aberdeenshire – Additional methods of recording respite were included in the 2008/09 figures. Older Adults (aged 65+) and Adults (aged 18 to 64) daytime figures have been revised for 2008/09 to allow for comparison with 2007/08.
- Angus – In 2008/09, respite provided in day centres was included for the first time. Older Adults (aged 65+) daytime figure has been revised for 2008/09 to allow for comparison with 2007/08.
- Dundee City – In 2008/09, Home Care enablement services were included for the first time. Adults (aged 18 to 64) daytime figure has been revised for 2008/09 to allow for comparison with 2007/08.
- East Ayrshire – In 2008/09, started to include adult day care respite not in a day centre. Adults (aged 18 to 64) daytime figure has been revised for 2008/09 to allow for comparison with 2007/08.
- Fife – In 2008/09, Adult day care centres were included for the first time. Also began recording daytime hours in conjunction with overnight respite, so overnight respite in a Care Home would count as 1 night and 12 hours. Provided revised figures for all daytime respite to allow comparisons to be made with 2007/08.
- Inverclyde – In 2008/09, began counting respite provided by contracted services and included additional homecare services. Older Adults (aged 65+) and Adults (aged 18 to 64) daytime figure has been revised for 2008/09 to allow for comparison with 2007/08.
- Orkney Islands – In 2008/09, began counting respite provided by Crossroads, through direct payments and Childcare summer play scheme. All daytime figures have been revised for 2008/09 allowing comparison with 2007/08.
- Renfrewshire – In 2008/09, began recording Intensive Domiciliary Support Service though this service was providing respite before 2008/09 but wasn't included in figures. Revised Older Adults (aged 65+) daytime figure to allow for comparison with 2007/08.
- West Dunbartonshire – In 2008/09, improvements made to how home care respite captured. Unable to provide revised figures for 2008/09.



### **3.2.3 Reasons for large increases/decreases in respite provision**

Any large increases or decreases (+/- 20%) in respite provision for each of the six categories below were queried with the Local Authorities concerned:

- Older Adults (aged 65+), overnight respite
- Older Adults (aged 65+), daytime respite
- Adults (aged 18 to 64), overnight respite
- Adults (aged 18 to 64), daytime respite
- Young people (aged 0 to 17), overnight respite
- Young people (aged 0 to 17), daytime respite.

Some of the reasons identified for the increase or decreases within Local Authorities are detailed below:

#### **Increases in provision**

- Due to additional places, beds and funding being made available from existing services
- As a result of new units/services being made available
- Due to the shift in the balance of care making more flexible/alternative respite available.

#### **Decreases in provision**

- Due to budget and staffing pressures within the Councils.
- Due to a drop in demand or clients preferring to opt for non-respite services.

### **3.3 Further information**

Further details and analysis of the data presented in this Statistics Release are available on request from the address given below. The Statistics Release is available on the Internet by accessing the Scottish Governments web site: –

<http://www.scotland.gov.uk/Topics/Statistics/Browse/Health/Publications>

Information at local authority level is shown in the annex to this Statistics Release.

Community Care Statistics  
Basement Rear  
St Andrews House  
Edinburgh  
EH1 3DG

Contact: Steven Gillespie  
Tel: 0131 244 3777  
E-mail: SWStat@scotland.gov.uk

This statistics release was published on 23<sup>rd</sup> February 2010.

#### **4. ANNEX**

The Annex provides more detailed information:

Annex 1 – Total respite weeks by Local Authority, 2006/07 to 2008/09.

Annex 2 – Overnight respite weeks by Local Authority, 2006/07 to 2008/09.

Annex 3 – Daytime respite weeks by Local Authority, 2006/07 to 2008/09.

Annex 4 – Respite weeks by Local Authority provided to Older People (Aged 65+), 2006/07 to 2008/09.

Annex 5 – Respite weeks by Local Authority provided to Adults (Aged 18 to 64), 2006/07 to 2008/09.

Annex 6 – Respite weeks by Local Authority provided to Young People (Aged 0 to 17), 2006/07 to 2008/09.

Annex 7 – Audit Scotland guidance on Respite Services SPI.

**Annex 1 – Total respite weeks by Local Authority, 2006/07 to 2008/09.**

Local Authority	Total respite weeks provided			
	2006/07	2007/08	2008/09 <sup>C</sup>	2008/09 <sup>N</sup>
Aberdeen City	4,210	6,110	4,740	4,250
Aberdeenshire	4,910	5,580	5,610	6,000
Angus	1,850	1,940	2,110	3,550
Argyll & Bute	3,700	3,580	3,620	3,620
Clackmannanshire	1,010	3,310	3,300	3,300
Dumfries & Galloway	2,370	2,320	1,980	1,980
Dundee City	4,920	5,380	5,450	6,240
East Ayrshire	3,310	3,940	4,110	6,190
East Dunbartonshire	5,870	6,530	6,950	6,950
East Lothian	1,500	1,750	1,690	1,690
East Renfrewshire	5,070	4,710	4,370	4,370
Edinburgh, City of	22,350	21,230	21,300	21,300
Eilean Siar	1,000	1,000	1,100	1,100
Falkirk	3,430	3,250	3,330	3,330
Fife	7,680	8,340	7,960	18,670
Glasgow City	26,060	25,210	22,960	22,960
Highland	4,410	3,860	3,850	3,850
Inverclyde	3,000	6,990	6,790	10,790
Midlothian	2,810	3,080	3,400	3,400
Moray	2,280	1,820	1,870	1,870
North Ayrshire	5,220	4,490	4,880	4,880
North Lanarkshire	9,580	10,020	12,820	12,820
Orkney Islands	1,330	1,400	1,350	1,850
Perth & Kinross	4,380	4,860	5,110	5,110
Renfrewshire	4,250	4,200	4,200	4,400
Scottish Borders	1,780	1,620	1,930	1,930
Shetland Islands	1,550	1,590	1,600	1,600
South Ayrshire	2,990	3,150	3,220	3,220
South Lanarkshire	10,020	10,670	11,580	11,580
Stirling	1,840	1,930	1,600	1,600
West Dunbartonshire	7,390	7,400	7,360	7,360
West Lothian	1,570	1,590	1,870	1,870
<b>All Scotland</b>	<b>163,640</b>	<b>172,880</b>	<b>174,030</b>	<b>193,650</b>

Source - Audit Scotland SPI .

All figures rounded to the nearest ten.

<sup>C</sup> - Same methodology used as in 2007/08 making the figure comparable to 2007/08

<sup>N</sup> - New methodology used making the figure incomparable to 2007/08

**Annex 2 – Overnight respite weeks by Local Authority, 2006/07 to 2008/09.**

Local Authority	Overnight respite nights provided				Overnight respite weeks provided			
	2006/07	2007/08	2008/09 <sup>C</sup>	2008/09 <sup>N</sup>	2006/07	2007/08	2008/09 <sup>C</sup>	2008/09 <sup>N</sup>
Aberdeen City	14,570	15,080	12,910	12,910	2,080	2,150	1,840	1,840
Aberdeenshire	21,940	20,730	22,200	22,200	3,130	2,960	3,170	3,170
Angus	8,990	8,310	9,220	11,140	1,280	1,190	1,320	1,590
Argyll & Bute	6,440	7,640	6,400	6,400	920	1,090	910	910
Clackmannanshire	6,050	5,420	5,860	5,860	860	770	840	840
Dumfries & Galloway	9,240	9,330	8,550	8,550	1,320	1,330	1,220	1,220
Dundee City	14,780	14,160	15,140	15,140	2,110	2,020	2,160	2,160
East Ayrshire	11,300	12,890	12,450	12,450	1,610	1,840	1,780	1,780
East Dunbartonshire	6,900	7,250	6,710	6,710	990	1,040	960	960
East Lothian	7,590	8,490	8,830	8,830	1,080	1,210	1,260	1,260
East Renfrewshire	12,340	11,650	8,410	8,410	1,760	1,660	1,200	1,200
Edinburgh, City of	33,280	27,510	27,530	27,530	4,750	3,930	3,930	3,930
Eilean Siar	4,380	4,960	5,630	5,630	630	710	800	800
Falkirk	13,310	12,470	12,910	12,910	1,900	1,780	1,840	1,840
Fife	27,680	30,280	27,980	27,980	3,950	4,330	4,000	4,000
Glasgow City	47,760	48,480	45,680	45,680	6,820	6,930	6,530	6,530
Highland	19,770	15,000	14,900	14,900	2,820	2,140	2,130	2,130
Inverclyde	5,470	5,930	6,480	6,480	780	850	930	930
Midlothian	8,940	6,400	7,840	7,840	1,280	910	1,120	1,120
Moray	8,530	6,830	6,600	6,600	1,220	980	940	940
North Ayrshire	15,250	16,470	18,480	18,480	2,180	2,350	2,640	2,640
North Lanarkshire	20,810	22,300	19,800	19,800	2,970	3,190	2,830	2,830
Orkney Islands	3,570	3,700	3,410	3,410	510	530	490	490
Perth & Kinross	15,490	17,900	17,390	17,390	2,210	2,560	2,480	2,480
Renfrewshire	18,330	17,560	18,540	18,540	2,620	2,510	2,650	2,650
Scottish Borders	9,760	9,100	11,370	11,370	1,390	1,300	1,620	1,620
Shetland Islands	8,620	8,770	8,160	8,160	1,230	1,250	1,170	1,170
South Ayrshire	12,850	12,910	13,790	13,790	1,840	1,840	1,970	1,970
South Lanarkshire	26,380	27,480	31,600	31,600	3,770	3,930	4,510	4,510
Stirling	9,100	9,350	7,360	7,360	1,300	1,340	1,050	1,050
West Dunbartonshire	7,530	8,160	8,370	8,370	1,080	1,170	1,200	1,200
West Lothian	8,230	7,760	9,150	9,150	1,180	1,110	1,310	1,310
<b>All Scotland</b>	<b>445,150</b>	<b>440,270</b>	<b>439,640</b>	<b>441,560</b>	<b>63,590</b>	<b>62,900</b>	<b>62,810</b>	<b>63,080</b>

Source - Audit Scotland SPI .

All figures rounded to the nearest ten.

<sup>C</sup> - Same methodology used as in 2007/08 making the figure comparable to 2007/08

<sup>N</sup> - New methodology used making the figure incomparable to 2007/08

### Annex 3 – Daytime respite weeks by Local Authority, 2006/07 to 2008/09.

Local Authority	Daytime respite hours provided				Daytime respite weeks provided			
	2006/07	2007/08	2008/09 <sup>C</sup>	2008/09 <sup>N</sup>	2006/07	2007/08	2008/09 <sup>C</sup>	2008/09 <sup>N</sup>
Aberdeen City	111,910	207,480	151,860	126,350	2,130	3,950	2,890	2,410
Aberdeenshire	93,220	137,370	128,240	148,640	1,780	2,620	2,440	2,830
Angus	29,820	39,370	41,560	102,570	570	750	790	1,950
Argyll & Bute	145,830	130,720	142,070	142,070	2,780	2,490	2,710	2,710
Clackmannanshire	7,730	133,300	129,230	129,230	150	2,540	2,460	2,460
Dumfries & Galloway	55,030	51,890	40,060	40,060	1,050	990	760	760
Dundee City	147,480	176,030	172,600	214,160	2,810	3,350	3,290	4,080
East Ayrshire	89,040	110,340	122,400	231,730	1,700	2,100	2,330	4,410
East Dunbartonshire	256,240	288,480	314,500	314,500	4,880	5,490	5,990	5,990
East Lothian	22,070	27,950	22,760	22,760	420	530	430	430
East Renfrewshire	173,550	159,660	166,390	166,390	3,310	3,040	3,170	3,170
Edinburgh, City of	923,820	908,040	911,650	911,650	17,600	17,300	17,360	17,360
Eilean Siar	19,740	15,510	15,480	15,480	380	300	290	290
Falkirk	80,480	77,310	78,190	78,190	1,530	1,470	1,490	1,490
Fife	195,820	211,040	208,250	770,280	3,730	4,020	3,970	14,670
Glasgow City	1,009,910	959,860	862,710	862,710	19,240	18,280	16,430	16,430
Highland	83,530	89,950	90,590	90,590	1,590	1,710	1,730	1,730
Inverclyde	116,590	322,580	307,820	517,840	2,220	6,140	5,860	9,860
Midlothian	80,360	113,960	119,810	119,810	1,530	2,170	2,280	2,280
Moray	55,590	44,590	48,530	48,530	1,060	850	920	920
North Ayrshire	159,540	112,330	117,680	117,680	3,040	2,140	2,240	2,240
North Lanarkshire	346,800	358,980	524,460	524,460	6,610	6,840	9,990	9,990
Orkney Islands	43,250	45,740	45,510	71,600	820	870	870	1,360
Perth & Kinross	113,740	120,850	137,990	137,990	2,170	2,300	2,630	2,630
Renfrewshire	85,740	89,030	81,600	92,110	1,630	1,700	1,550	1,750
Scottish Borders	20,030	16,880	16,220	16,220	380	320	310	310
Shetland Islands	16,510	17,720	22,820	22,820	310	340	430	430
South Ayrshire	60,750	68,600	65,620	65,620	1,160	1,310	1,250	1,250
South Lanarkshire	328,080	354,340	371,110	371,110	6,250	6,750	7,070	7,070
Stirling	28,180	31,100	28,750	28,750	540	590	550	550
West Dunbartonshire	331,570	327,540	323,660	323,660	6,320	6,240	6,160	6,160
West Lothian	20,780	25,370	29,420	29,420	400	480	560	560
<b>All Scotland</b>	<b>5,252,730</b>	<b>5,773,900</b>	<b>5,839,510</b>	<b>6,854,940</b>	<b>100,050</b>	<b>109,980</b>	<b>111,230</b>	<b>130,570</b>

Source - Audit Scotland SPI.

All figures rounded to the nearest ten.

<sup>C</sup> - Same methodology used as in 2007/08 making the figure comparable to 2007/08

<sup>N</sup> - New methodology used making the figure incomparable to 2007/08

## Annex 4 – Respite weeks by Local Authority provided to Older People (Aged 65+), 2006/07 to 2008/09.

Local Authority	Total respite weeks provided				Overnight respite weeks provided				Daytime respite weeks provided			
	2006/07	2007/08	2008/09 <sup>C</sup>	2008/09 <sup>N</sup>	2006/07	2007/08	2008/09 <sup>C</sup>	2008/09 <sup>N</sup>	2006/07	2007/08	2008/09 <sup>C</sup>	2008/09 <sup>N</sup>
Aberdeen City	1,720	2,320	1,870	1,870	1,580	1,510	1,250	1,250	140	810	630	630
Aberdeenshire	2,950	3,190	3,270	3,460	1,980	2,220	2,400	2,400	970	980	870	1,070
Angus	1,320	1,320	1,430	2,870	990	830	950	1,220	330	490	480	1,640
Argyll & Bute	1,920	1,900	2,090	2,090	660	650	490	490	1,260	1,250	1,600	1,600
Clackmannanshire	640	1,870	1,830	1,830	640	480	510	510	NR	1,390	1,320	1,320
Dumfries & Galloway	1,020	1,050	890	890	720	810	680	680	290	240	210	210
Dundee City	2,060	2,090	2,200	2,200	1,180	1,120	1,150	1,150	880	970	1,040	1,040
East Ayrshire	2,140	2,360	2,540	2,540	920	870	890	890	1,220	1,500	1,650	1,650
East Dunbartonshire	4,270	4,970	5,350	5,350	570	590	470	470	3,700	4,390	4,880	4,880
East Lothian	620	720	800	800	530	640	720	720	90	70	80	80
East Renfrewshire	3,770	3,800	3,260	3,260	990	1,270	720	720	2,780	2,530	2,540	2,540
Edinburgh, City of	10,220	9,180	9,920	9,920	1,680	1,530	1,450	1,450	8,540	7,650	8,460	8,460
Eilean Siar	840	820	890	890	520	590	670	670	330	220	220	220
Falkirk	1,970	1,860	1,830	1,830	1,110	1,040	1,000	1,000	860	830	830	830
Fife	5,420	5,730	5,450	8,960	2,430	2,640	2,460	2,460	3,000	3,100	3,000	6,500
Glasgow City	9,330	8,590	8,390	8,390	3,740	3,600	3,490	3,490	5,580	5,000	4,910	4,910
Highland	2,120	1,440	1,570	1,570	1,580	910	990	990	540	530	590	590
Inverclyde	2,200	3,420	4,140	7,750	360	420	470	470	1,840	3,000	3,670	7,280
Midlothian	1,080	1,010	1,090	1,090	590	510	560	560	490	500	530	530
Moray	790	840	950	950	510	400	410	410	280	430	540	540
North Ayrshire	2,970	3,160	3,430	3,430	1,400	1,500	1,730	1,730	1,580	1,660	1,700	1,700
North Lanarkshire	4,420	6,240	6,850	6,850	1,430	1,590	1,330	1,330	2,990	4,650	5,510	5,510
Orkney Islands	570	630	640	870	330	350	320	320	240	290	320	550
Perth & Kinross	3,410	3,700	3,880	3,880	1,700	1,970	1,840	1,840	1,710	1,730	2,040	2,040
Renfrewshire	1,560	1,470	1,390	1,590	1,280	1,150	1,170	1,170	280	320	220	420
Scottish Borders	760	840	1,010	1,010	720	810	990	990	40	20	20	20
Shetland Islands	1,010	1,090	890	890	900	950	740	740	110	140	150	150
South Ayrshire	1,630	1,710	1,750	1,750	1,370	1,400	1,430	1,430	260	310	320	320
South Lanarkshire	7,730	7,570	8,110	8,110	2,700	2,530	2,980	2,980	5,020	5,040	5,130	5,130
Stirling	1,120	1,160	760	760	970	1,030	620	620	150	130	140	140
West Dunbartonshire	3,010	3,160	3,490	3,490	620	620	560	560	2,390	2,540	2,930	2,930
West Lothian	690	670	780	780	560	490	610	610	120	170	170	170
<b>All Scotland</b>	<b>85,270</b>	<b>89,880</b>	<b>92,740</b>	<b>101,920</b>	<b>37,250</b>	<b>37,020</b>	<b>36,040</b>	<b>36,310</b>	<b>48,020</b>	<b>52,860</b>	<b>56,700</b>	<b>65,610</b>

Source - Audit Scotland SPI .

All figures rounded to the nearest ten.

<sup>C</sup> - Same methodology used as in 2007/08 making the figure comparable to 2007/08

<sup>N</sup> - New methodology used making the figure incomparable to 2007/08

## Annex 5 – Respite weeks by Local Authority provided to Adults (Aged 18 to 64), 2006/07 to 2008/09.

Local Authority	Total respite weeks provided				Overnight respite weeks provided				Daytime respite weeks provided			
	2006/07	2007/08	2008/09 <sup>C</sup>	2008/09 <sup>N</sup>	2006/07	2007/08	2008/09 <sup>C</sup>	2008/09 <sup>N</sup>	2006/07	2007/08	2008/09 <sup>C</sup>	2008/09 <sup>N</sup>
Aberdeen City	1,270	2,470	2,080	2,080	340	450	430	430	930	2,020	1,650	1,650
Aberdeenshire	1,360	930	950	1,140	1,000	590	650	650	360	350	300	490
Angus	360	410	460	460	210	230	250	250	150	180	210	210
Argyll & Bute	1,050	920	770	770	100	270	170	170	950	650	600	600
Clackmannanshire	170	1,200	1,220	1,220	170	210	280	280	NR	990	940	940
Dumfries & Galloway	380	390	350	350	140	310	280	280	240	80	80	80
Dundee City	2,230	2,530	2,560	3,350	600	630	760	760	1,620	1,900	1,800	2,590
East Ayrshire	910	1,380	1,280	3,360	490	810	700	700	420	560	580	2,660
East Dunbartonshire	1,110	1,080	1,090	1,090	300	330	360	360	820	750	730	730
East Lothian	430	460	440	440	410	450	420	420	20	20	20	20
East Renfrewshire	620	460	570	570	500	290	310	310	120	160	260	260
Edinburgh, City of	7,810	8,230	7,980	7,980	1,530	1,500	1,520	1,520	6,280	6,730	6,460	6,460
Eilean Siar	80	120	140	140	70	100	120	120	10	30	20	20
Falkirk	860	820	810	810	600	590	590	590	260	230	220	220
Fife	1,640	1,930	1,560	8,360	1,240	1,430	1,130	1,130	410	500	430	7,240
Glasgow City	14,490	14,150	12,790	12,790	1,900	1,930	2,030	2,030	12,590	12,220	10,760	10,760
Highland	1,160	1,370	1,300	1,300	710	740	680	680	450	630	620	620
Inverclyde	520	3,290	2,410	2,800	280	300	350	350	230	2,990	2,060	2,450
Midlothian	1,230	1,660	1,840	1,840	330	300	430	430	890	1,360	1,420	1,420
Moray	1,190	680	620	620	550	430	400	400	640	260	220	220
North Ayrshire	1,830	830	960	960	570	560	670	670	1,260	270	290	290
North Lanarkshire	4,550	3,210	5,490	5,490	1,200	1,250	1,190	1,190	3,350	1,960	4,290	4,290
Orkney Islands	650	650	590	800	110	110	90	90	540	540	500	720
Perth & Kinross	610	780	890	890	440	500	560	560	180	280	330	330
Renfrewshire	1,660	1,730	1,670	1,670	960	960	1,080	1,080	700	780	600	600
Scottish Borders	640	430	560	560	530	310	440	440	110	120	120	120
Shetland Islands	300	240	340	340	250	210	290	290	50	30	60	60
South Ayrshire	660	560	570	570	310	240	320	320	350	310	250	250
South Lanarkshire	1,640	1,890	2,150	2,150	870	990	1,090	1,090	770	900	1,070	1,070
Stirling	180	190	210	210	150	160	180	180	20	30	30	30
West Dunbartonshire	3,660	3,510	3,160	3,160	320	380	450	450	3,340	3,140	2,710	2,710
West Lothian	530	530	650	650	470	470	570	570	60	60	80	80
<b>All Scotland</b>	<b>55,770</b>	<b>59,050</b>	<b>58,470</b>	<b>68,940</b>	<b>17,650</b>	<b>18,030</b>	<b>18,760</b>	<b>18,760</b>	<b>38,120</b>	<b>41,020</b>	<b>39,700</b>	<b>50,170</b>

Source - Audit Scotland SPI .

All figures rounded to the nearest ten.

<sup>C</sup> - Same methodology used as in 2007/08 making the figure comparable to 2007/08

<sup>N</sup> - New methodology used making the figure incomparable to 2007/08

**Annex 6 – Respite weeks by Local Authority provided to Young People (Aged 0 to 17), 2006/07 to 2008/09.**

Local Authority	Total respite weeks provided				Overnight respite weeks provided				Daytime respite weeks provided			
	2006/07	2007/08	2008/09 <sup>C</sup>	2008/09 <sup>N</sup>	2006/07	2007/08	2008/09 <sup>C</sup>	2008/09 <sup>N</sup>	2006/07	2007/08	2008/09 <sup>C</sup>	2008/09 <sup>N</sup>
Aberdeen City	1,230	1,320	780	300	160	200	170	170	1,060	1,120	610	130
Aberdeenshire	610	1,450	1,400	1,400	160	160	130	130	450	1,290	1,280	1,280
Angus	170	200	210	210	90	120	120	120	90	80	100	100
Argyll & Bute	730	770	760	760	160	180	250	250	570	590	510	510
Clackmannanshire	200	240	250	250	50	80	50	50	150	160	200	200
Dumfries & Galloway	970	880	740	740	460	210	270	270	510	670	470	470
Dundee City	630	760	700	700	330	280	250	250	300	480	450	450
East Ayrshire	260	200	290	290	210	160	190	190	50	40	100	100
East Dunbartonshire	490	470	510	510	120	120	130	130	370	360	380	380
East Lothian	460	570	460	460	140	120	120	120	320	440	340	340
East Renfrewshire	680	450	540	540	270	100	170	170	410	350	370	370
Edinburgh, City of	4,320	3,820	3,400	3,400	1,540	910	960	960	2,770	2,910	2,440	2,440
Eilean Siar	70	70	70	70	30	20	20	20	40	50	50	50
Falkirk	600	570	690	690	190	150	250	250	410	410	440	440
Fife	620	680	950	1,340	290	260	410	410	320	430	540	930
Glasgow City	2,240	2,470	1,780	1,780	1,180	1,400	1,010	1,010	1,060	1,070	770	770
Highland	1,130	1,050	990	990	540	490	470	470	600	560	520	520
Inverclyde	290	280	250	250	140	130	120	120	150	160	130	130
Midlothian	500	420	470	470	360	110	140	140	150	310	330	330
Moray	290	300	300	300	150	140	130	130	140	160	170	170
North Ayrshire	420	500	490	490	210	290	230	230	200	210	260	260
North Lanarkshire	610	570	480	480	340	340	300	300	270	220	180	180
Orkney Islands	120	110	120	180	70	70	80	80	50	40	50	100
Perth & Kinross	350	380	340	340	80	90	80	80	280	290	260	260
Renfrewshire	1,020	1,000	1,140	1,140	370	400	400	400	650	610	740	740
Scottish Borders	380	350	360	360	150	170	200	200	230	180	170	170
Shetland Islands	240	260	370	370	80	90	140	140	160	170	230	230
South Ayrshire	710	890	900	900	160	210	210	210	550	680	690	690
South Lanarkshire	650	1,210	1,320	1,320	190	400	450	450	460	810	870	870
Stirling	540	580	630	630	170	150	250	250	370	430	380	380
West Dunbartonshire	720	730	710	710	140	170	190	190	590	560	520	520
West Lothian	360	390	440	440	140	140	130	130	220	250	310	310
<b>All Scotland</b>	<b>22,610</b>	<b>23,950</b>	<b>22,830</b>	<b>22,790</b>	<b>8,690</b>	<b>7,850</b>	<b>8,000</b>	<b>8,000</b>	<b>13,920</b>	<b>16,100</b>	<b>14,830</b>	<b>14,790</b>

Source - Audit Scotland SPI .

All figures rounded to the nearest ten.

<sup>C</sup> - Same methodology used as in 2007/08 making the figure comparable to 2007/08

<sup>N</sup> - New methodology used making the figure incomparable to 2007/08



## Annex 7: Audit Scotland guidance on Respite Services SPI

### ASW 5: Provision of respite services:

- a) Total overnight respite nights provided
- b) % overnight respite nights not in a care home
- c) Total hours daytime respite provided
- d) % daytime respite hours provided not in a day care centre

### Definitions

**Respite care** is a service intended to benefit a carer and the person he or she cares for by providing a short break from caring tasks. The break is made possible through alternative care arrangements. Breaks provided to people without carers are excluded from this performance indicator, which is intended to measure a key element in support for carers. This indicator only concerns respite care provided or purchased by the Council, or by voluntary organisations funded for this purpose by the Council.

**A carer** is an adult, young person or child who provides a substantial amount of unpaid care on a regular basis for a partner, parent or child, other relative, friend or neighbour who is unable to manage at home without help because of physical or mental ill health, age or disability. Carers may or may not be living with the person for whom they are caring. Exclude people providing such care as a volunteer working for a voluntary organisation or on any contractual basis. "Substantial and regular care" is not defined in carers' legislation and should be interpreted in terms of the impact of the caring role on the individual carer and their family (Scottish Executive Circular CCD 2/2003).

**A person cared for** is an adult with community care needs, with a carer. Older people (65+) include people with or without dementia, aged 65 and over. Age should be calculated as at 31st March. Other adults (18-64) includes people with learning disabilities, physical disabilities, mental health problems, dementia, HIV/AIDS, drug/ alcohol abuse problems, etc., aged 18 to 64 inclusive.

**Respite care** breaks may last a few hours or a few weeks and may or may not be repeated at regular intervals. The duration of the service episode must allow the carer a break from caring tasks; for this reason a minimum duration of one hour is required for the service episode to count as respite for the purposes of this performance indicator (normally, the duration of the respite episode will be longer).

The carer may use the break for any non-caring activity he or she chooses. Services that provide additional care alongside the care provided by the carer (to the same or another cared-for person) provide assistance but do not provide a respite break.

There is no maximum duration for the respite break episode. Councils should exercise caution in relation to people who are recorded in information systems as having very long respite episodes; it may be that the care episode was originally provided for respite but is now being provided as long-term care.

The following kinds of respite care should be included:

- all respite care where this is part of a care plan or arranged on an emergency basis
- all respite care, whether it has been provided directly by the council, or secured by the council from another source such as a voluntary or private sector organisation
- any respite care, even if this subsequently becomes longer term or permanent care. (N.B. The original provision needs to have been on a respite basis, and it is only this period which should be reported).

The **types of respite care** relevant for the purposes of reporting in relation to this indicator are:

Row type (Measure)	Setting	Service type		Definition
<b>Overnight (nights)</b>	At home	(1)	Overnight sitter services at home	Support provided in cared-for person's normal residence that enables the carer to be absent, if they wish.
	Away from home	(2)	In a care home	Accommodated away from home in a registered care home. Excludes respite care in hospital in-patient beds or in supported accommodation.
		(3)	In other accommodation with support	Accommodated away from home in accommodation with support.
		(4)	In another's home	Overnight respite care with another family or individual. Holiday breaks* involving overnight stays (unless in care homes or supported accommodation).
<b>Daytime (hours)</b>	At home	(5)	In cared-for person's normal residence	All respite services provided in the home of the cared for person, except overnight. Includes home care and daytime sitter services.
	Away from home	(6)	In a day centre	Day centre attendance (only counted when the provision of a respite care break to the carer is an <i>explicit</i> reason for day centre attendance recorded in the care plan of the carer or the cared-for person).
		(7)	Day activities not in a day centre	Day services and activities outside the home providing respite for the carer and not based in a day centre.
		(8)	Other day respite	Respite care in another family's home in daytime; Holiday breaks* without overnight stay.

**Note:** \*Holiday breaks include opportunities for the carer and cared-for person being supported to go away together, as well as breaks for either carer(s) or cared-for person(s) to go on holiday separately.

In **row (a)** Councils should report the total number of **nights** (for service types 1 to 4 in the table above), and in **row (c)** the total number of respite care **hours** (for service types 5 to 8), received during the reporting year, as rates per 1,000 population, adding up all respite episodes in the year, whether or not the respite care episode started in the previous reporting year or has yet to be completed.

In **row (b)** count the percentage of respite nights in service types 1, 3 and 4. In **row (d)** count the percentage of respite hours in service types 5, 7 and 8.

**Respite is a reason for providing a service**, and often is not a distinctive type of service. Short duration services provided for the cared-for person, for example emergency admission to hospital, or a programme of rehabilitation, provide the carer with a short break in the normal routine of caring as a by-product of the service provided to the cared-for person. Rehabilitation services and skills training for adults with community care needs are of great benefit to their carers in helping to promote independence. However, none of these services are respite care breaks intended to support carers and are excluded from this performance indicator definition.

Day centre services provided on a regular basis to the cared-for person also provide carers with breaks from care tasks. However, they should only be included in this performance indicator if the provision of a respite care break to the carer is an explicit reason for this service recorded in the care plan of the carer or the cared-for person.

Befriending and sitter services should not be included unless they enable the carer to take a break of at least one hour from caring tasks.

Some care homes (and supported accommodation) have beds specifically designated for respite use: exclude any long-stay residents who have been admitted to such beds. Some residents may be admitted for respite which subsequently becomes long-stay. Count the period from admission up to the point when the reason for their continued residency has changed.

Where the short break involves the carer and person cared for remaining together, for example holidays together, the respite hours or bed-nights should be counted for one person receiving the short break, rather than for two.

The contextual information required is the number of respite nights and hours for each of the eight service types defined above. No information is required on the numbers of recipients.

## Sources

Council assessment and care management records and information systems.

Records and information systems used by voluntary organisations providing respite care under Council contract or SLA.

Population data should be based on the mid-year estimates for the year, published by the Registrar General.

## Interpretation

The indicator will be affected primarily by the pattern of need and services required, and by the availability of respite care.

## EC 8: Provision of respite services

- a) total overnight respite nights provided
- b) % overnight respite nights not in a care home
- c) total hours daytime respite provided
- d) % daytime respite hours provided not in a day care centre

## Definitions

**Respite care** is a service intended to benefit a carer and a child or young person with disabilities he or she cares for by providing a short break from caring tasks. The break is made possible through alternative care arrangements. The indicator is intended to measure a key element in support for carers and only concerns respite care provided or purchased by the Council, or by voluntary organisations funded for this purpose by the Council.

A **carer** is an adult, young person or child who provides a substantial amount of unpaid care on a regular basis for a child with disabilities. Exclude people providing such care as a volunteer working for a voluntary organisation or on any contractual basis. "Substantial and regular care" is not defined in carers' legislation and should be interpreted in terms of the impact of the caring role on the individual carer and their family (Scottish Executive Circular CCD 2/2003).

**Children with a disability** are children and young people aged 0-17 (as at 31<sup>st</sup> March) with care requirements arising from learning disabilities, physical disabilities or mental health problems. Children with emotional difficulties should be included only where their difficulties are severe. Do not include breaks provided for children without any disability but who are affected by another's disability, eg a family member.

**Respite care breaks** may last a few hours or a few weeks and may or may not be repeated at regular intervals. The duration of the service episode must allow the carer a break from caring tasks; for this reason a minimum duration of one hour is required for the service episode to count as respite for the purposes of this performance indicator (normally, the duration of the respite episode will be longer). The carer may use the break for any noncaring activity he or she chooses. Services that provide additional care alongside the care provided by the carer provide *assistance* but do not provide a respite break.

There is no maximum duration for the respite break episode. Councils should exercise caution in relation to people who are recorded in information systems as having very long respite episodes; it may be that the care episode was originally provided for respite but is now being provided as long-term care. Councils are required to have regard to the actions required under the *Arrangements to Look After Children (Scotland) Regulations 1996* when overnight respite care away from home involves episodes longer than 4 weeks, or more than 120 days in one year.

The following kinds of respite care should be included:

- all respite care where this is part of a care plan or arranged on an emergency basis

- all respite care, whether it has been provided directly by the council, or secured by the council from another source such as a voluntary or private sector organisation
- any respite care, even if this subsequently becomes longer term or permanent care. (N.B. The original provision needs to have been on a respite basis, and it is only this period which should be reported).

The **types of respite care** relevant for the purposes of reporting in relation to this indicator are:

Row type (Measure)	Setting	Service type		Definition
<b>Overnight (nights)</b>	At home	(1)	Overnight sitter services at home	Support provided overnight in the child's normal residence that enables the carer to be absent, if they wish.
	Away from home	(2)	In a care home/residential school	Accommodated away from home in a registered care home or residential school. Excludes respite care in hospital in-patient beds or in supported accommodation.
		(3)	In other accommodation with support	Accommodated away from home in accommodation with support
		(4)	In another's home	Overnight respite care with another family or individual. Holiday breaks* involving overnight stays (unless in care homes or supported accommodation).
<b>Daytime (hours)</b>	At home	(5)	In child's normal residence	All respite services provided in child/young person's home, except overnight. Includes home care and daytime sitter services.
	Away from home	(6)	In a day centre	Attendance at a Children & Families centre or any other day centre (only counted when the provision of a respite care break to the carer is an <i>explicit</i> reason for day centre attendance recorded in the care plan of the carer or the child/young person).
		(7)	Day activities not in a day centre	Day services and activities outside the home providing respite for the carer and not based in a day centre.
		(8)	Other day respite	Respite care in another family's home in daytime; Holiday breaks* without overnight stay.

**Note:** \*Holiday breaks include opportunities for the carer and cared-for person being supported to go away together, as well as breaks for either carer(s) or cared-for person(s) to go on holiday separately.

In **row (a)** Councils should report the total number of **nights** (for service types 1 to 4 in the table above), and in **row (c)** the total number of respite care **hours** (for service types 5 to 8), received during the reporting year, as rates per 1,000 population, adding up all respite episodes in the year, whether or not the respite care episode started in the previous reporting year or has yet to be completed.

In **row (b)** count the percentage of respite nights in service types 1, 3 and 4. In **row (d)** count the percentage of respite hours in service types 5, 7 and 8.

Respite is a reason for providing a service, and often is not a distinctive type of service. Short duration services provided for the child/young person with disabilities, for example emergency admission to hospital, or a programme of rehabilitation, provide the carer with a short break in the normal routine of caring as a by-product of the service provided to the child/young person.

Rehabilitation services and skills training for children with disabilities are of great benefit to their carers in helping to promote independence. However, none of these services are respite care breaks intended to support carers and are excluded from this performance indicator definition.

Day centre services provided on a regular basis to a child with disabilities also provide carers with breaks from care tasks. However, they should only be included in this performance indicator if the provision of a respite care break to the carer is an explicit reason for this service recorded in the care plan of the carer or the cared-for person.

Befriending and sitter services should not be included unless they enable the carer to take a break of at least one hour from caring tasks.

Some children's homes may have beds specifically designated for respite use: exclude any non-respite residents who have been admitted to such beds. Some children may be admitted for respite which subsequently becomes non-respite. Count the period from admission up to the point when the reason for their continued residency has changed. Where the short break involves the carer and child/young person remaining together, for example holidays together, the respite hours or bed-nights should be counted for one person receiving the short break, rather than for two.

The **contextual information** required is the number of respite nights and hours for each of the eight service types defined above. No information is required on the numbers of recipients.

### **Sources**

Council assessment and care management records and information systems.

Records and information systems used by voluntary organisations providing respite care under Council contract or SLA.

Population data should be based on the mid-year estimates for the year, published by the Registrar General.

### **Interpretation**

The indicator will be affected primarily by the pattern of need and services required, and by the availability of respite care.

## SCOTTISH GOVERNMENT STATISTICIAN GROUP

### OUR AIM

To provide relevant and reliable information, analysis and advice that meet the needs of government, business and the people of Scotland.

### OBJECTIVES

1. To produce statistics and analysis relevant to user needs by
  - Developing our understanding of customer requirements to ensure statistics are kept relevant and analysis is well targeted;
  - Developing the range of statistics and analysis we produce;
  - Where practicable improving timeliness;
  - Providing more statistics disaggregated by age, gender and ethnicity;
  - Developing more data for small areas through the Neighbourhood Statistics project;
  - Contributing to production of comparable statistics across the UK and internationally.
2. To ensure effective use of our statistics by
  - Contributing more directly to policy processes inside and where possible outside government;
  - Improving access to and presentation of data and analysis;
  - Improving the advice provided on statistics.
3. To work effectively with users and providers by
  - Maintaining arrangements to consult and involve users and providers;
  - Involving users and providers in planning developments in outputs and processes;
  - Minimising the burden on data providers through dropping or streamlining collections as appropriate, to ensure the benefits of the information justify the costs of collection.
4. To develop the quality of statistics by
  - Assuring and improving quality as an integral part of data collection and analysis and through regular reviews in line with National Statistics quality strategy;
  - Developing statistical methods, systems and classifications;
  - Working with the rest of the Government Statistical Service to develop joint approaches/solutions where appropriate.
5. To assure the integrity of statistics by
  - Maintaining and promoting integrity through implementation of the National Statistics Code of Practice and related protocols;
  - Safeguarding the confidentiality of data subjects.
6. To ensure the efficient and effective delivery of statistics products and services by
  - Making best use of all sources including administrative sources;
  - Working with other analysts to maximise the contribution of our own and other analysts' work;
  - Ensuring value for money;
  - Making best use of Information and Communications Technology;
  - Ensuring effective communication within the Statistician Group.
7. To develop our workforce and competences
  - Ensuring recruitment of staff with the necessary skills and potential;
  - Ensuring development of expertise amongst existing staff;
  - Promoting and upholding the standards of the statistics profession.

### This is an Official Statistics publication

"This is an Official Statistics publication. It has been produced to high professional standards set out in the Official Statistics Code of Practice Protocol - see <http://www.statisticsauthority.gov.uk/assessment/code-of-practice/code-of-practice-for-official-statistics.pdf>

These statistics undergo regular quality assurance reviews to ensure that they meet customer needs. They are produced free from any political interference."

Details of pre-release access will be provided in the Scottish Government Statistics Website under 'Forthcoming Releases'

## Correspondence and enquiries

Enquiries on Respite Care should be addressed to:

Steven Gillespie  
Analytical Services Division  
Health Directorate  
St Andrews House  
Edinburgh, EH1 3DG  
Telephone: 0131 244 3777; Fax: 0131 244 2371  
e-mail: Swstat@scotland.gsi.gov.uk

General enquiries on Scottish Government statistics can be addressed to:

Office of the Chief Statistician  
Scottish Government  
3 Floor West Rear, St Andrews House  
EDINBURGH EH1 3DG  
Telephone: (0131) 244 0442; Fax: (0131) 244 2223  
e-mail: statistics.enquiries@scotland.gsi.gov.uk

Advice on specific areas of Scottish Government statistical work can be obtained from staff at the telephone numbers given below:

### Scottish Government Statistics contacts

Agricultural census and labour force	(0131) 244 6150
Business	(0141) 242 5446
Community Care	(0131) 244 3777
Courts and law	(0131) 244 2227
Environment	(0131) 244 0445
Equality	(0131) 244 0324
Fisheries	(0131) 244 6441
Further and Higher Education	(0141) 242 0273
Health	(0131) 244 3432
Housing	(0131) 244 7236
Income, Tax and Benefits	(0131) 244 2583
Labour market	(0141) 242 5446
Local government finance	(0131) 244 7033
Planning	(0131) 244 0439
Prisons	(0131) 244 2147
Recorded crime	(0131) 244 2635
Schools – pupils and teachers	(0131) 244 1689
Schools – qualifications	(0131) 244 0315
Scottish Government personnel	(0131) 244 3926
Scottish Neighbourhood Statistics	(0131) 244 0442
The Economy	(0131) 244 2234
Transport	(0131) 244 7255

### Other contacts for Scottish statistics

Forestry Commission	(0131) 314 6337
General Register Office for Scotland - Vital statistics and publications - Population statistics, census statistics or digital boundary products	(0131) 314 4243 (0131) 314 4254
The Scottish Funding Councils for Higher and Further Education	(0131) 313 6575

For **general enquiries about National Statistics** in the United Kingdom Government contact the National Statistics Public Enquiry Service on

#### 020 7533 5888

minicom: 01633 812399  
Email: info@statistics.gov.uk  
Fax: 01633 652747  
Letters: room DG/18, 1 Drummond Gate,  
LONDON SW1V 2QQ

You can also find National Statistics on the internet - go to [www.statistics.gov.uk](http://www.statistics.gov.uk)

If you would like to be consulted about new or existing statistical collections or receive notification of forthcoming statistical publications, please register your interest on the Scottish Government ScotStat website at [www.scotland.gov.uk/Topics/Statistics/scotstat](http://www.scotland.gov.uk/Topics/Statistics/scotstat)

Current contact points, e-mail addresses and the publications listed below as well as a range of other statistical publications can be found on the Scottish Government Web site at [www.scotland.gov.uk/stats](http://www.scotland.gov.uk/stats)

Further information on the General Register Office for Scotland is available on the website [www.gro-scotland.gov.uk](http://www.gro-scotland.gov.uk)

### Most recent Health Statistical Publications relating to the Community Care theme

Ref no.	Title	Last published	Price
9780755977529	Home Care Services, Scotland, 2009	24 November 2009	-
9780755977536	Free Personal and Nursing Care, Scotland, 2007/08	24 November 2009	-
9780755977048	Registered Blind & Partially Sighted Persons, Scotland 2008	27 October 2009	-
9780755974405	Care Homes, Scotland 2008	24 February 2009	-
9780755972883	Self-directed Support (Direct Payments), Scotland, 2008	28 October 2008	-
9780755970582	Adults with Learning Disabilities, The Same as You?, Scotland 2007	25 March 2008	-

Additional copies of these publications may be purchased from **Scottish Government Publication Sales, Blackwell's Bookshop, 53 South Bridge, Edinburgh, EH1 1YS**, Telephone: 0131 622 8283 or 0131 622 8258, Fax: 0131 557 8149. Cheques should be made payable to 'Blackwell's Bookshop'.

### Complaints and suggestions

If you are not satisfied with our service, please write to the Chief Statistician, Mr Rob Wishart, 3R.01, St Andrews House, Edinburgh, EH1 3DG, Telephone: (0131) 244 0302, e-mail [rob.wishart@scotland.gsi.gov.uk](mailto:rob.wishart@scotland.gsi.gov.uk). We also welcome any comments or suggestions that would help us to improve our standards of service.

ISSN < ISSN number > ISBN 978-0-7559-7836-6

Crown Copyright

Brief extracts from the Crown Copyright material in this publication may be reproduced provided the source is fully acknowledged.