

An Official Statistics Publication for Scotland

Respite Care, Scotland 2010

Published: 28 September 2010
ISBN: 978-0-7559-9661-2

1. Introduction

This Statistics Release presents information on respite care services provided or purchased by Local Authorities in Scotland. Respite Care is a service intended to benefit a carer and the person he or she cares for by providing a short break from caring tasks.

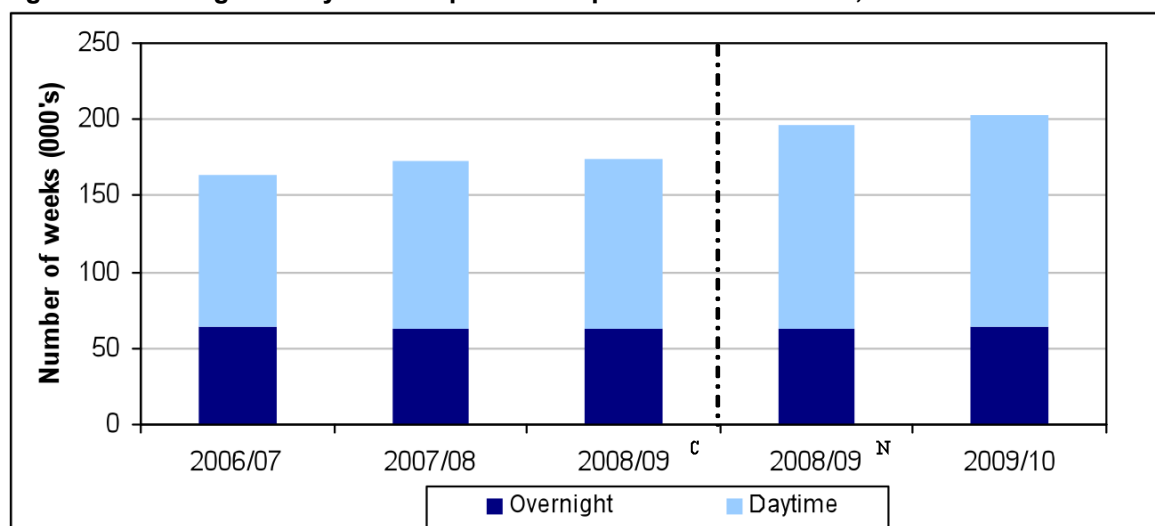
The 2006/07 to 2008/09 figures used in this publication were originally collected and published by each Local Authority in Scotland. Local Authorities were required to collect and publish information on **respite nights** in a Care Home and **respite hours** provided at home as part of their Statutory Performance Indicators (SPIs). The 2009/10 figures were submitted directly to the Scottish Government and are being published for the first time.

In this publication, the information has been presented and converted into **respite weeks** to allow presentation of an estimate of the **total number of respite weeks** provided each year in Scotland.

This release presents the results for the last four years to give a picture of:

- The total number of respite weeks provided by each Local Authority in Scotland
- The amount of daytime and overnight respite provided
- The amount of respite provision by age group

Figure 1 : Overnight & Daytime Respite weeks provided in Scotland, 2006/07 to 2009/10



Source: Audit Scotland SPI data 2006/07-2008/09, Scottish Government 2009/10

^c - Same methodology used as in 2007/08 making the figure comparable to 2007/08

^N - New methodology used making the figure incomparable to 2007/08 but comparable with 2009/10

2. Total number of respite weeks provided: Scotland

This statistical release presents the number of respite weeks provided to all age groups within Scotland. Please note that this release presents two different figures for 2008/09. A comparable figure based on the same methodology as 2007/08 and a figure based on a revised methodology, which is not comparable to 2007/08 but comparable with 2009/10. The revised methodologies have been used by Local Authorities following the identification that they were not counting all respite provision from services which had been available for a number of years or were incorrectly counting respite provision.

Please see the background notes for more details and the annexes provide detailed information on respite weeks provided in each Local Authority in Scotland.

2.1 Respite weeks provided to all ages

Table 1 presents two different figures for 2008/09. The first set of figures (2008/09^C) presents figures using the same methodology as used in 2007/08. This shows that the total number of respite weeks provided in Scotland has increased by 5.6% (9,090 weeks) from 163,640 in 2006/07 to 172,730 in 2007/08 and by 0.8% (1,300 weeks) to 174,030 in 2008/09.

The second set of figures (2008/09^N) which is comparable with 2009/10, shows that the total number of respite weeks provided in Scotland has increased by 3.9% (7,650 weeks) from 195,710 in 2008/09 to 203,360 in 2009/10.

Respite provision has increased from 172,730 weeks in 2007/08 to 203,360 weeks in 2009/10. This is an increase of 30,630 weeks over the time period, of which 8,950 weeks is due to an increase in respite provision and 21,680 weeks is due to improved data recording and/or methodology changes.

Table 1: Number of respite weeks provided in Scotland, 2006/07 to 2009/10

	Number of respite weeks provided ¹				
	2006/07	2007/08	2008/09 ^C	2008/09 ^N	2009/10
Overnight Respite Weeks	63,590	62,750	62,800	62,730	64,110
Daytime Respite Weeks	100,050	109,980	111,230	132,980	139,250
Total	163,640	172,730	174,030	195,710	203,360

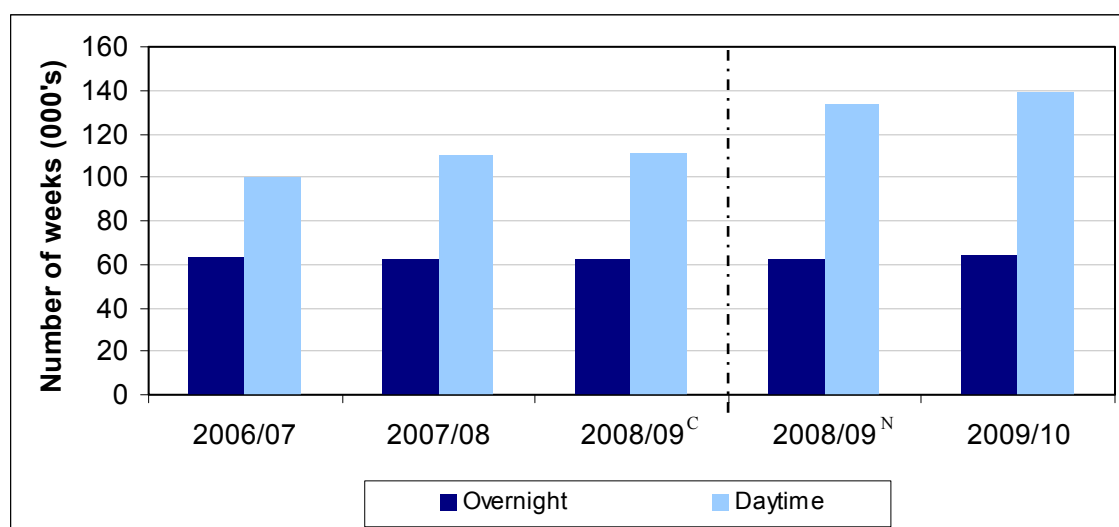
Source: Audit Scotland SPI data 2006/07-2008/09, Scottish Government 2009/10

¹All figures rounded to the nearest ten.

^C - Same methodology used as in 2007/08 making the figure comparable to 2007/08

^N - New methodology used making the figure incomparable to 2007/08 but comparable with 2009/10

Figure 2: Overnight and Daytime Respite weeks provided in Scotland, 2006/07 to 2009/10



Source: Audit Scotland SPI data 2006/07-2008/09, Scottish Government 2009/10

^C - Same methodology used as in 2007/08 making the figure comparable to 2007/08

^N - New methodology used making the figure incomparable to 2007/08 but comparable with 2009/10

Looking more closely at Table 1 and the type of respite provided it is clear that the majority of respite provided is daytime. In 2006/07 daytime respite accounted for 61.1% of all respite provided, this has increased each year and now accounts for 68.5% in 2009/10.

Table 1 also shows that the number of daytime respite weeks has significantly increased each year. Whilst overnight respite decreased between 2006/07 and 2007/08, increasing slightly in 2008/09 with a significant increase in 2009/10.

2.2 Respite weeks provided to older adults (Aged 65+)

Table 2 presents two different figures for 2008/09. The first set of figures (2008/09^C) presents figures using the same methodology as used in 2007/08. This shows that the total number of respite weeks provided to older people in Scotland has increased by 5.2% (4,460 weeks) from 85,270 in 2006/07 to 89,730 in 2007/08 and by 3.4% (3,010 weeks) to 92,740 in 2008/09.

The second set of figures (2008/09^N) which is comparable with 2009/10, shows that the total number of respite weeks provided in Scotland has increased by 1.8% (1,820 weeks) from 103,870 in 2008/09 to 105,690 in 2009/10.

Respite provision has increased from 89,730 weeks in 2007/08 to 105,690 weeks in 2009/10. This is an increase of 15,960 weeks over the time period, of which 4,830 weeks is due to an increase in respite provision and 11,130 weeks is due to improved data recording and/or methodology changes.

Table 2: Number of respite weeks provided to older adults (Aged 65+) in Scotland, 2006/07 to 2009/10

	Number of respite weeks provided ¹				
	2006/07	2007/08	2008/09 ^C	2008/09 ^N	2009/10
Overnight Respite Weeks	37,250	36,870	36,040	35,990	35,730
Daytime Respite Weeks	48,020	52,860	56,700	67,880	69,960
Total	85,270	89,730	92,740	103,870	105,690

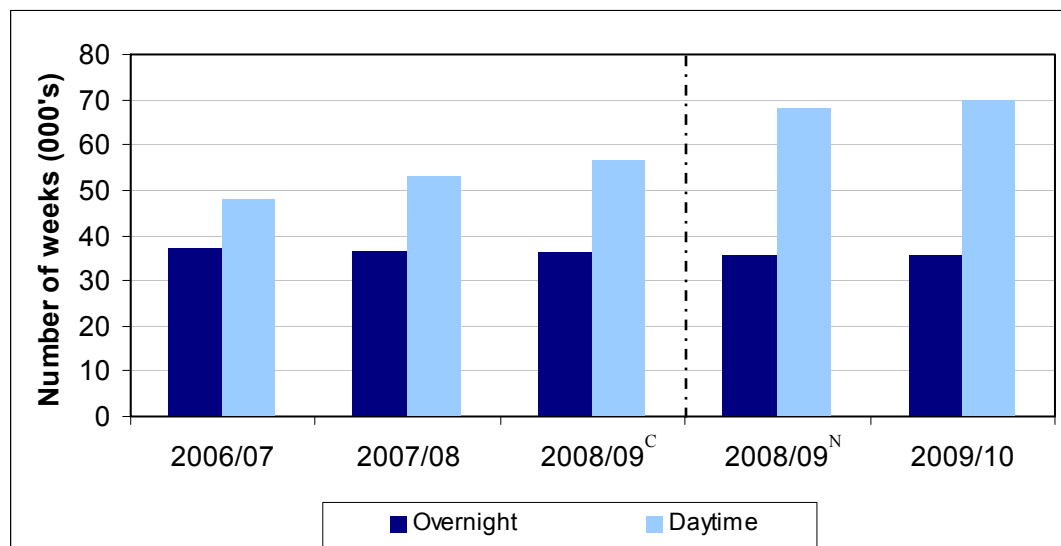
Source: Audit Scotland SPI data 2006/07-2008/09, Scottish Government 2009/10

¹All figures rounded to the nearest ten.

^C - Same methodology used as in 2007/08 making the figure comparable to 2007/08

^N - New methodology used making the figure incomparable to 2007/08 but comparable with 2009/10

Figure 3: Overnight and Daytime Respite weeks provided to older adults (Aged 65+) in Scotland, 2006/07 to 2009/10



Source: Audit Scotland SPI data 2006/07-2008/09, Scottish Government 2009/10

^C - Same methodology used as in 2007/08 making the figure comparable to 2007/08

^N - New methodology used making the figure incomparable to 2007/08 but comparable with 2009/10

Also Table 2 shows that the majority of respite provided to older people is daytime respite. In 2006/07 daytime respite accounted for 56.3% of all respite provided, this has increased each year and now accounts for 66.2% in 2009/10. The number of daytime respite weeks provided has increased each year, at the same time overnight respite has decreased each year.

2.3 Respite weeks provided to adults (Aged 18 to 64)

Table 3 presents two different figures for 2008/09. The first set of figures (2008/09^C) presents figures using the same methodology as used in 2007/08. This shows that total number of respite weeks provided to adults aged from 18 to 64 in Scotland increased by 5.9% (3,280 weeks) from 55,770 in 2006/07 to 59,050 in 2007/08 and decreased by 1.0% (590 weeks) to 58,460 in 2008/09.

The second set of figures (2008/09^N) which is comparable with 2009/10, shows that the total number of respite weeks provided in Scotland has increased by 6.8% (4,730 weeks) from 69,070 in 2008/09 to 73,800 in 2009/10.

Respite provision has increased from 59,050 weeks in 2007/08 to 73,800 weeks in 2009/10. This is an increase of 14,750 weeks over the time period, of which 4,140 weeks is due to an increase in respite provision and 10,610 weeks is due to improved data recording and/or methodology changes.

Table 3: Number of respite weeks provided to adults (Aged 18 to 64) in Scotland, 2006/07 to 2009/10

	Number of respite weeks provided ¹				
	2006/07	2007/08	2008/09 ^C	2008/09 ^N	2009/10
Overnight Respite Weeks	17,650	18,030	18,760	18,690	20,180
Daytime Respite Weeks	38,120	41,020	39,700	50,380	53,620
Total	55,770	59,050	58,460	69,070	73,800

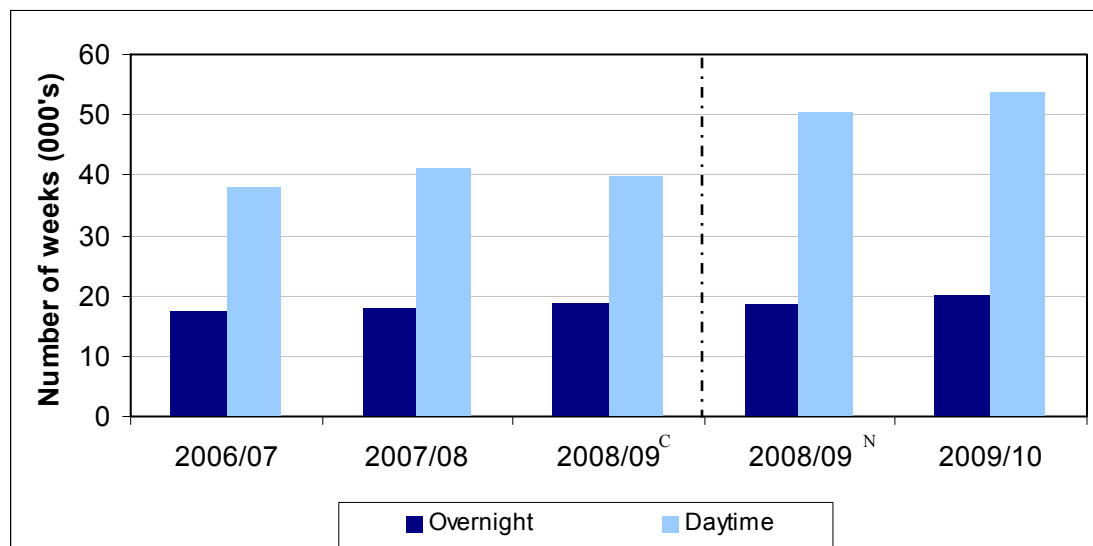
Source: Audit Scotland SPI data 2006/07-2008/09, Scottish Government 2009/10

¹All figures rounded to the nearest ten.

^C - Same methodology used as in 2007/08 making the figure comparable to 2007/08

^N - New methodology used making the figure incomparable to 2007/08 but comparable with 2009/10

Figure 4: Overnight and Daytime Respite weeks provided to adults (Aged 18 to 64) in Scotland, 2006/07 to 2009/10



Source: Audit Scotland SPI data 2006/07-2008/09, Scottish Government 2009/10

^C - Same methodology used as in 2007/08 making the figure comparable to 2007/08

^N - New methodology used making the figure incomparable to 2007/08 but comparable with 2009/10

Further analysis of Table 3 shows that the majority of respite provided to adults is daytime. Daytime respite accounted for about 68.4% in 2006/07 and now accounts for 72.7% in 2009/10. The number of daytime weeks provided increased between 2006/07 and 2007/08, then slightly decreased in 2008/09 and has increased again between 2008/09 and 2009/10. Unlike older adults and young people, overnight respite for adults has increased each year.

2.4 Respite weeks provided to young people (Aged 0 to 17)

Table 4 presents two different figures for 2008/09. The first set of figures (2008/09^C) presents figures using the same methodology as used in 2007/08. This shows that the total number of respite weeks provided to young people aged from 0 to 17 in Scotland increased by 5.9% (1,340 weeks) from 22,610 in 2006/07 to 23,950 in 2007/08 and decreased by 4.7% (1,120 weeks) to 22,830 in 2008/09.

The second set of figures (2008/09^N) which is comparable with 2009/10, shows that the total number of respite weeks provided in Scotland has increased by 4.8% (1,100 weeks) from 22,770 in 2008/09 to 23,870 in 2009/10.

Respite provision has decreased from 23,950 weeks in 2007/08 to 23,870 weeks in 2009/10. This is an decrease of 80 weeks over the time period, of which 20 weeks is due to a decrease in respite provision and 60 weeks is due to improved data recording and/or methodology changes.

Table 4: Number of respite weeks provided to young people (Aged 0 to 17) in Scotland, 2006/07 to 2009/10

	Number of respite weeks provided ¹				
	2006/07	2007/08	2008/09 ^C	2008/09 ^N	2009/10
Overnight Respite Weeks	8,690	7,850	8,000	8,050	8,200
Daytime Respite Weeks	13,920	16,100	14,830	14,720	15,670
Total	22,610	23,950	22,830	22,770	23,870

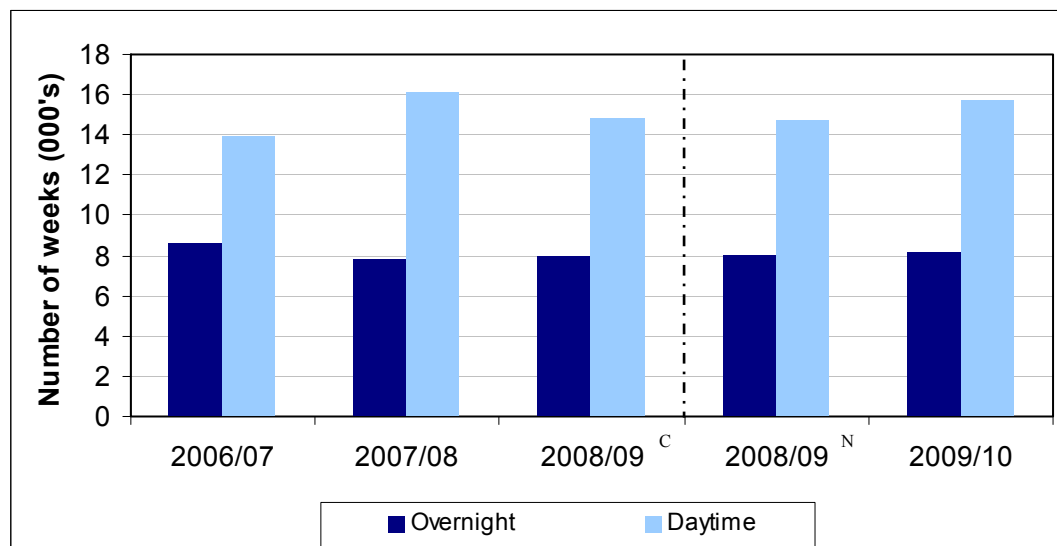
Source: Audit Scotland SPI data 2006/07-2008/09, Scottish Government 2009/10

¹All figures rounded to the nearest ten.

^C - Same methodology used as in 2007/08 making the figure comparable to 2007/08

^N - New methodology used making the figure incomparable to 2007/08 but comparable with 2009/10

Figure 5: Overnight and Daytime Respite weeks provided to young people (Aged 0 to 17) in Scotland, 2006/07 to 2009/10



Source: Audit Scotland SPI data 2006/07-2008/09, Scottish Government 2009/10

^C - Same methodology used as in 2007/08 making the figure comparable to 2007/08

^N - New methodology used making the figure incomparable to 2007/08 but comparable with 2009/10

Looking more closely at Table 4 shows that the majority of respite provided is daytime. In 2006/07 daytime respite accounted for 61.6% of all respite provided, this increased in 2007/08 to 67.2% and has decreased to 65.6% in 2009/10.

The number of daytime weeks provided increased between 2006/07 and 2007/08, then decreased in 2008/09 and has increased again between 2008/09 and 2009/10. Overnight respite for young adults decreased between 2006/07 and 2007/08, and has then increased each year.

3. Background information on the collection of the data

3.1 Data Sources

Audit Scotland (2006/07 to 2008/09)

This data is provided to Audit Scotland by all Local Authorities in Scotland as one of the Statutory Performance Indicators (SPIs). The information is collected and published locally by each council in Scotland. Audit Scotland publishes information about the comparative performance of councils across Scotland in a compendium of all the data. These are available from www.audit-scotland.gov.uk/performance/index.php, but please note that the figures have been superseded with those presented in this publication.

Scottish Government (2009/10)

The Scottish Government is now responsible for the collection of respite data. This follows Audit Scotland decision to discontinue the collection of the SPI data for respite care.

3.2 Understanding the Statistics in this Report.

All information in this Statistics Release is based on a year from 1st April to 31st March.

In order to provide an estimate of total respite provision across Scotland, respite nights and respite hours have been converted into respite weeks. In order to calculate this, seven respite nights equal one respite week and 52.5 hours equal one respite week. This standard method was agreed by CoSLA and the Scottish Government.

The figures published in this Statistics Release were last published on 23 February 2010.

As part of the collection of the 2009/10 data Local Authorities were given the opportunity to check their respite figures to ensure that they were correct and any large increases or decrease been years were questioned. This validation work has resulted in the following changes to the figures previously published.

Overnight respite

Two Local Authorities identified errors in the previously published overnight respite data and provided revised figures for the publication. They are:

- East Renfrewshire – revised Older Adults (aged 65+) for 2007/08 decreased in respite nights of 988 nights (143 weeks)
- Stirling – revised Adults (aged 18 to 64) both figures for 2008/09 decreased in respite nights of 46 nights (6 weeks)

Daytime respite

One Local Authority identified errors in the previously published daytime respite data and provided revised figures for the publication. They are:

- Renfrewshire – revised Older Adults (aged 65+) for 2008/09^N as change in methodology reported in the last publication has been revised back to 2007/08 methodology. Decrease in respite hours of 10,501 hours (200 weeks).

3.2.1 Methodology used by Local Authorities

Local Authorities were asked to provide full details of the methodology they use to identify respite provision based on the Audit Scotland guidance.

The collection of respite data is something that has proved to be very complex for Local Authorities to capture. This means that each Local Authority may use a variety of data collection methods and sources of information to collect the required information as specified in the Audit Commission guidelines. (Refer to Annex 7). The data is collected from either management/financial information systems, from manual records or direct from private/voluntary respite suppliers and is most commonly a combination of these data sources.

The data will also incorporate a number of different services depending on the services available within a Local Authority, examples of the services included are;

- Day Care
- Home Care
- Short Breaks/Holiday breaks
- Direct payments

The Audit Commission Guide for 2005/06 and 2006/07 stated “Where a single episode of respite care involves both daytime and overnight support, count both the nights and the daytime hours” (p50). This sentence was removed from the guidance for 2007/08 onwards.

When comparing Local Authority data users must be aware that the figures are not comparable due to different methodologies used. An example of this is the counting of respite as both daytime and overnight support, when the services are received in the same episode of respite care. There are four Local Authorities that use this methodology and these are:

- Edinburgh
- Fife (from 2008/09)
- Moray (only for Respite provided in the home, this ceased in 2009/10)
- West Dunbartonshire (only for Respite provided to a small number of Young people (aged 0 to 17))

Overall respite provision in these areas may appear to be higher than other areas because they are, in effect, more than double counting their Care Home and Homecare respite provision. If a client has a week of respite in a Care Home, then most Local Authorities simply count this as 7 nights (=1 respite week). If a Local Authority counts this as 7 nights and 12 hours for each of 7 days then this is equal to 2.6 respite weeks.

3.2.2 Methodology changes over time

Local Authorities were asked whether they used exactly the same methodology to measure respite provision in 2007/08 and 2008/09 or between 2008/09 and 2009/10. Between 2007/08 and 2009/10 a number of Local Authorities have used the same methodology for both years which means that their figures should be comparable over time. Please note that the Local Authorities were not asked if any methodology changes were made between 2006/07 & 2007/08, therefore these figures may not be comparable for all Local Authorities.

A total of 18 Local Authorities have changed their methodology between 2007/08 and 2009/10. In many cases, Local Authorities began counting services which had been running for some time but which had not previously been included in the figures. In these cases, Local Authorities have provided figures for 2008/09 using the same methodology used in either 2007/08 or 2009/10 depending when the methodology changes happened. This allows us to see any genuine increase in services provision from 2007/08.

This means that two sets of figures are published for 2008/09 as follows:

- 2008/09 (Comparable) -This figure is produced using the same methodology as was used in 2007/08 and is therefore comparable with 2007/08.
- 2008/09 (New) - This figure may use different methodology from 2007/08, but is believed to be an improved count of respite care data by the Local Authorities concerned and is comparable with the 2009/10 figure.

Further details on the Local Authorities who changed their methodology and therefore have two figures for the number of respite weeks provided in 2008/09 is given below:

- Aberdeen City – Prior to 2008/09, included Direct Payments, after school clubs and play schemes in the Children daytime respite figure, from 2008/09 these were excluded.
- Aberdeenshire – Improved data collection in 2008/09, by identifying a number of additional methods of recording respite that weren't included in the 2007/08.
- Angus – Prior to 2008/09, respite provided in day centres wasn't included. In 2009/10, improved data collection to ensure that returns from a service provider only included clients who attended specifically to provide respite. The previously published 2008/09^N figure for daytime hours and overnight nights has been updated for Other Adults (aged 18 to 64) to reflect this improvement.
- Dundee City – In 2008/09, Home Care enablement services were included for the first time.
- East Ayrshire – In 2008/09, started to include adult day care respite not in a day centre.
- Edinburgh – In 2009/10 migrated data held by Children and Families Centres in standalone databases to central system as this provided an opportunity to improve data quality and realign the client categories of children receiving a service from these centres. Unable to provide revised figures for either 2008/09 or 2009/10.
- Falkirk – In 2009/10 improved methodology for identifying overnights provided to all clients and daytime hours for young adults. The previously published 2008/09^N figure for daytime hours and overnight nights has been updated based on this methodology, to produce a comparable figure to 2009/10.
- Fife – In 2008/09, Adult day care centres were included for the first time. Also began recording daytime hours in conjunction with overnight respite, so overnight respite in a Care Home would count as 1 night and 12 hours.
- Highland – In 2009/10 improved methodology for identifying overnights provided to clients aged 65 and over, which had previously been under reported. The previously published 2008/09^N figure for overnight nights has been updated based on this methodology, to produce a comparable figure to 2009/10.
- Inverclyde – In 2008/09, began counting respite provided by contracted services and included additional homecare services. In 2009/10 improved methodology further for identifying daytime hours provided to clients aged 65 and over. The previously published 2008/09^N figure for daytime hours has been updated based on this methodology, to produce a comparable figure to 2009/10.
- Midlothian - In 2009/10 improved methodology for identifying respite provision to young adults (aged 0 -17). The previously published 2008/09^N figures for daytime hours and overnight nights has been updated based on this methodology, to produce a comparable figure to 2009/10.
- Moray – In 2009/10 changed methodology so that the no daytime hours were included for overnight stays and are now including direct payments provide to clients for respite care. The previously published 2008/09^N figure for daytime hours has been updated based on this methodology, to produce a comparable figure to 2009/10.
- North Lanarkshire – Due to ongoing modernisation of services from building based to community based, it has proved difficult to capture all respite activity. Unable to provide revised figures for either 2008/09 or 2009/10.
- Orkney Islands – In 2008/09, began counting respite provided by Crossroads, through direct payments and Childcare summer play scheme.
- Renfrewshire – In 2009/10, identified that provision was being overestimation, revised methodology for identify daytime hours for Young Adults (aged 0-17). The previously published 2008/09^N figure for daytime hours has been updated based on this methodology, to produce a comparable figure to 2009/10.

- Scottish Borders – In 2009/10 improved methodology for identifying overnights provided to clients. The previously published 2008/09^N figure for overnight nights has been updated based on this methodology, to produce a comparable figure to 2009/10.
- West Dunbartonshire – In 2008/09, improvements made to how home care respite captured. Unable to provide revised figures for 2008/09.
- West Lothian – In 2009/10, reviewed users receiving day care and identified that an element of the care provided was respite. The previously published 2008/09^N figure for Other adults (aged 18-64) daytime hours has been updated based on this methodology, to produce a comparable figure to 2009/10.

Three Local Authorities changed their methodology in 2009/10 but were unable to change the 2008/09 data based on this new methodology therefore they have provide 2009/10 figures based on the methodology used in 2008/09. The details are as follows;

- Orkney islands – In 2009/10, improved methodology so that the hours of respite provided are for clients where "respite is an explicit reason for this service recorded in the care plan of the carer or the cared-for person". To ensure that the 2009/10 figure would be comparable with 2008/09 Orkney provided a revised figure based on the old methodology, which is a total of 1,654 weeks. If the new methodology had been used this figure would have been 1,239 weeks.
- Shetland Islands - In 2009/10, improved methodology so that previously unreported day care respite provided by one of their establishments. To ensure that the 2009/10 figure would be comparable with 2008/09 Shetland provided a revised figure based on the old methodology, which is a total of 1,760 weeks. If the new methodology had been used this figure would have been 1,899 weeks.
- South Ayrshire – In 2009/10, improved methodology so that the hours of respite provided are for clients in a day care centre are now included. To ensure that the 2009/10 figure would be comparable with 2008/09 South Ayrshire provided a revised figure based on the old methodology, which is a total of 3,242 weeks. If the new methodology had been used this figure would have been 6,576 weeks.

3.2.3 Reasons for large increases/decreases in respite provision

Any large increases or decreases (+/- 20%) in respite provision for each of the six categories below were queried with the Local Authorities concerned:

- Older Adults (aged 65+), overnight respite
- Older Adults (aged 65+), daytime respite
- Adults (aged 18 to 64), overnight respite
- Adults (aged 18 to 64), daytime respite
- Young people (aged 0 to 17), overnight respite
- Young people (aged 0 to 17), daytime respite.

Some of the reasons identified for the increase or decreases within Local Authorities are detailed below:

Increases in provision

- Due to additional places, beds and funding being made available from existing services
- As a result of new units/services being made available
- Due to the shift in the balance of care making more flexible/alternative respite available.

Decreases in provision

- Due to budget and staffing pressures within the Councils.
- Due to a drop in demand or clients preferring to opt for non-respite services.

3.3 Further information

Further details and analysis of the data presented in this Statistics Release are available on request from the address given below. The Statistics Release is available on the Internet by accessing the Scottish Governments web site: –

<http://www.scotland.gov.uk/Topics/Statistics/Browse/Health/Publications>

Information at local authority level is shown in the annex to this Statistics Release.

Community Care Statistics
Basement Rear
St Andrews House
Edinburgh
EH1 3DG

Contact: Steven Gillespie
Tel: 0131 244 3777
E-mail: SWStat@scotland.gov.uk

This statistics release was published on 28th September 2010.

4. ANNEX

The Annex provides more detailed information:

Annex 1 – Total respite weeks by Local Authority, 2006/07 to 2009/10.

Annex 2 – Overnight respite weeks by Local Authority, 2006/07 to 2009/10.

Annex 3 – Daytime respite weeks by Local Authority, 2006/07 to 2009/10.

Annex 4 – Respite weeks by Local Authority provided to Older People (Aged 65+), 2006/07 to 2009/10.

Annex 5 – Respite weeks by Local Authority provided to Adults (Aged 18 to 64), 2006/07 to 2009/10.

Annex 6 – Respite weeks by Local Authority provided to Young People (Aged 0 to 17), 2006/07 to 2009/10.

Annex 7 – Audit Scotland guidance on Respite Services SPI.

Annex 1 – Total respite weeks by Local Authority, 2006/07 to 2009/10.

Local Authority	Total respite weeks provided				
	2006/07	2007/08	2008/09 ^C	2008/09 ^N	2009/10
Aberdeen City	4,210	6,110	4,740	4,250	3,250
Aberdeenshire	4,910	5,580	5,610	6,000	7,200
Angus	1,850	1,940	2,110	3,410	3,830
Argyll & Bute	3,700	3,580	3,620	3,620	4,610
Clackmannanshire	1,010	3,310	3,300	3,300	3,250
Dumfries & Galloway	2,370	2,320	1,980	1,980	1,980
Dundee City	4,920	5,380	5,450	6,240	7,030
East Ayrshire	3,310	3,940	4,110	6,190	6,540
East Dunbartonshire	5,870	6,530	6,950	6,950	7,610
East Lothian	1,500	1,750	1,690	1,690	1,660
East Renfrewshire	5,070	4,560	4,370	4,370	4,420
Edinburgh, City of	22,350	21,230	21,300	21,300	21,820
Eilean Siar	1,000	1,000	1,100	1,100	1,220
Falkirk	3,430	3,250	3,330	3,240	3,330
Fife	7,680	8,340	7,960	18,670	20,460
Glasgow City	26,060	25,210	22,960	22,960	21,650
Highland	4,410	3,860	3,850	4,850	5,690
Inverclyde	3,000	6,990	6,790	12,350	12,780
Midlothian	2,810	3,080	3,400	3,310	3,560
Moray	2,280	1,820	1,870	1,790	1,950
North Ayrshire	5,220	4,490	4,880	4,880	4,770
North Lanarkshire	9,580	10,020	12,820	12,820	11,030
Orkney Islands	1,330	1,400	1,350	1,850	1,650
Perth & Kinross	4,380	4,860	5,110	5,110	6,320
Renfrewshire	4,250	4,200	4,200	4,010	4,030
Scottish Borders	1,780	1,620	1,930	1,920	2,020
Shetland Islands	1,550	1,590	1,600	1,600	1,760
South Ayrshire	2,990	3,150	3,220	3,220	3,240
South Lanarkshire	10,020	10,670	11,580	11,580	12,630
Stirling	1,840	1,930	1,590	1,590	1,600
West Dunbartonshire	7,390	7,400	7,360	7,360	7,750
West Lothian	1,570	1,590	1,870	2,190	2,710
All Scotland	163,640	172,730	174,030	195,710	203,360

Source: Audit Scotland SPI data 2006-2008, Scottish Government 2009.

All figures rounded to the nearest ten. Total may not add up to the sum of components due to rounding

^C - Same methodology used as in 2007/08 making the figure comparable to 2007/08

^N - New methodology used making the figure incomparable to 2007/08 but comparable with 2009/10

Annex 2 – Overnight respite weeks by Local Authority, 2006/07 to 2009/10.

Local Authority	Overnight respite nights provided					Overnight respite weeks provided				
	2006/07	2007/08	2008/09 ^C	2008/09 ^N	2009/10	2006/07	2007/08	2008/09 ^C	2008/09 ^N	2009/10
Aberdeen City	14,570	15,080	12,910	12,910	11,910	2,080	2,160	1,850	1,850	1,710
Aberdeenshire	21,940	20,730	22,200	22,200	21,800	3,140	2,970	3,180	3,180	3,110
Angus	8,990	8,310	9,220	11,040	11,390	1,290	1,180	1,320	1,580	1,620
Argyll & Bute	6,440	7,640	6,400	6,400	7,640	920	1,100	910	910	1,100
Clackmannanshire	6,050	5,420	5,860	5,860	5,750	860	770	840	840	830
Dumfries & Galloway	9,240	9,330	8,550	8,550	8,480	1,320	1,330	1,230	1,230	1,210
Dundee City	14,780	14,160	15,140	15,140	16,370	2,110	2,030	2,160	2,160	2,340
East Ayrshire	11,300	12,890	12,450	12,450	12,650	1,620	1,840	1,780	1,780	1,800
East Dunbartonshire	6,900	7,250	6,710	6,710	7,650	990	1,040	960	960	1,090
East Lothian	7,590	8,490	8,830	8,830	8,210	1,080	1,210	1,260	1,260	1,160
East Renfrewshire	12,340	10,660	8,410	8,410	8,430	1,760	1,520	1,200	1,200	1,200
Edinburgh, City of	33,280	27,510	27,530	27,530	28,760	4,750	3,940	3,930	3,930	4,110
Eilean Siar	4,380	4,960	5,630	5,630	5,750	620	710	810	810	820
Falkirk	13,310	12,470	12,910	11,480	11,630	1,900	1,780	1,840	1,640	1,650
Fife	27,680	30,280	27,980	27,980	28,750	3,960	4,330	4,000	4,000	4,110
Glasgow City	47,760	48,480	45,680	45,680	43,470	6,820	6,930	6,530	6,530	6,210
Highland	19,770	15,000	14,900	14,900	19,310	2,830	2,140	2,140	2,140	2,760
Inverclyde	5,470	5,930	6,480	6,480	6,800	780	850	940	940	970
Midlothian	8,940	6,400	7,840	7,250	6,320	1,280	920	1,130	1,050	890
Moray	8,530	6,830	6,600	6,600	8,600	1,210	970	940	940	1,230
North Ayrshire	15,250	16,470	18,480	18,480	17,280	2,180	2,350	2,630	2,630	2,460
North Lanarkshire	20,810	22,300	19,800	19,800	21,070	2,970	3,180	2,820	2,820	3,010
Orkney Islands	3,570	3,700	3,410	3,410	3,370	510	530	490	490	480
Perth & Kinross	15,490	17,900	17,390	17,390	15,760	2,220	2,560	2,480	2,480	2,250
Renfrewshire	18,330	17,560	18,540	18,540	17,990	2,610	2,510	2,650	2,650	2,570
Scottish Borders	9,760	9,100	11,370	11,080	11,520	1,400	1,290	1,630	1,580	1,650
Shetland Islands	8,620	8,770	8,160	8,160	9,480	1,230	1,250	1,170	1,170	1,360
South Ayrshire	12,850	12,910	13,790	13,790	12,010	1,840	1,850	1,960	1,960	1,720
South Lanarkshire	26,380	27,480	31,600	31,600	36,340	3,760	3,920	4,520	4,520	5,190
Stirling	9,100	9,350	7,320	7,320	6,170	1,290	1,340	1,040	1,040	880
West Dunbartonshire	7,530	8,160	8,370	8,370	8,300	1,080	1,170	1,200	1,200	1,190
West Lothian	8,230	7,760	9,150	9,150	9,860	1,170	1,100	1,310	1,310	1,410
All Scotland	445,150	439,280	439,600	439,120	448,780	63,590	62,750	62,800	62,730	64,110

Source: Audit Scotland SPI data 2006-2008, Scottish Government 2009.

All figures rounded to the nearest ten. Total may not add up to the sum of components due to rounding

^C - Same methodology used as in 2007/08 making the figure comparable to 2007/08

^N - New methodology used making the figure incomparable to 2007/08 but comparable with 2009/10

Annex 3 – Daytime respite weeks by Local Authority, 2006/07 to 2009/10.

Local Authority	Daytime respite hours provided					Daytime respite weeks provided				
	2006/07	2007/08	2008/09 ^C	2008/09 ^N	2009/10	2006/07	2007/08	2008/09 ^C	2008/09 ^N	2009/10
Aberdeen City	111,910	207,480	151,860	126,350	81,490	2,130	3,950	2,890	2,410	1,550
Aberdeenshire	93,220	137,370	128,240	148,640	214,560	1,780	2,620	2,450	2,840	4,080
Angus	29,820	39,370	41,560	96,200	115,650	570	750	790	1,830	2,200
Argyll & Bute	145,830	130,720	142,070	142,070	184,480	2,780	2,490	2,710	2,710	3,510
Clackmannanshire	7,730	133,300	129,230	129,230	127,270	150	2,540	2,460	2,460	2,420
Dumfries & Galloway	55,030	51,890	40,060	40,060	40,160	1,040	990	760	760	770
Dundee City	147,480	176,030	172,600	214,160	246,280	2,800	3,350	3,290	4,080	4,690
East Ayrshire	89,040	110,340	122,400	231,730	248,360	1,690	2,100	2,330	4,410	4,730
East Dunbartonshire	256,240	288,480	314,500	314,500	342,080	4,890	5,500	5,990	5,990	6,520
East Lothian	22,070	27,950	22,760	22,760	25,830	430	530	440	440	500
East Renfrewshire	173,550	159,660	166,390	166,390	168,960	3,310	3,040	3,170	3,170	3,220
Edinburgh, City of	923,820	908,040	911,650	911,650	929,910	17,590	17,290	17,360	17,360	17,710
Eilean Siar	19,740	15,510	15,480	15,480	20,990	380	300	290	290	400
Falkirk	80,480	77,310	78,190	83,880	87,730	1,530	1,470	1,490	1,590	1,670
Fife	195,820	211,040	208,250	770,280	858,460	3,730	4,030	3,970	14,670	16,360
Glasgow City	1,009,910	959,860	862,710	862,710	810,710	19,230	18,290	16,440	16,440	15,440
Highland	83,530	89,950	90,590	142,640	153,900	1,590	1,720	1,730	2,720	2,940
Inverclyde	116,590	322,580	307,820	599,570	619,930	2,220	6,150	5,860	11,420	11,800
Midlothian	80,360	113,960	119,810	119,340	139,280	1,530	2,170	2,280	2,280	2,650
Moray	55,590	44,590	48,530	44,600	37,800	1,060	850	930	860	720
North Ayrshire	159,540	112,330	117,680	117,680	120,980	3,040	2,140	2,250	2,250	2,300
North Lanarkshire	346,800	358,980	524,460	524,460	421,070	6,610	6,830	9,980	9,980	8,020
Orkney Islands	43,250	45,740	45,510	71,600	61,610	830	870	870	1,370	1,170
Perth & Kinross	113,740	120,850	137,990	137,990	213,560	2,170	2,300	2,630	2,630	4,070
Renfrewshire	85,740	89,030	81,600	71,580	76,570	1,630	1,710	1,560	1,370	1,460
Scottish Borders	20,030	16,880	16,220	17,550	19,880	380	320	310	330	380
Shetland Islands	16,510	17,720	22,820	22,820	21,360	320	340	440	440	400
South Ayrshire	60,750	68,600	65,620	65,620	80,170	1,160	1,300	1,260	1,260	1,530
South Lanarkshire	328,080	354,340	371,110	371,110	390,770	6,250	6,750	7,070	7,070	7,440
Stirling	28,180	31,100	28,750	28,750	37,520	540	590	550	550	710
West Dunbartonshire	331,570	327,540	323,660	323,660	344,670	6,320	6,240	6,160	6,160	6,570
West Lothian	20,780	25,370	29,420	46,580	68,580	400	480	560	890	1,310
All Scotland	5,252,730	5,773,900	5,839,510	6,981,580	7,310,590	100,050	109,980	111,230	132,980	139,250

Source: Audit Scotland SPI data 2006-2008, Scottish Government 2009.

All figures rounded to the nearest ten. Total may not add up to the sum of components due to rounding

^C - Same methodology used as in 2007/08 making the figure comparable to 2007/08

^N - New methodology used making the figure incomparable to 2007/08 but comparable with 2009/10

Annex 4 – Respite weeks by Local Authority provided to Older People (Aged 65+), 2006/07 to 2009/10.

Local Authority	Total respite weeks provided					Overnight respite weeks provided					Daytime respite weeks provided				
	2006/07	2007/08	2008/09 ^C	2008/09 ^N	2009/10	2006/07	2007/08	2008/09 ^C	2008/09 ^N	2009/10	2006/07	2007/08	2008/09 ^C	2008/09 ^N	2009/10
Aberdeen City	1,720	2,320	1,880	1,880	1,880	1,580	1,510	1,250	1,250	1,180	140	810	630	630	700
Aberdeenshire	2,950	3,200	3,270	3,470	3,640	1,980	2,220	2,400	2,400	2,310	970	980	870	1,070	1,330
Angus	1,320	1,320	1,430	2,860	3,150	990	830	950	1,220	1,210	330	490	480	1,640	1,940
Argyll & Bute	1,920	1,900	2,090	2,090	2,150	660	650	490	490	670	1,260	1,250	1,600	1,600	1,480
Clackmannanshire	640	1,870	1,830	1,830	1,760	640	480	510	510	490	-	1,390	1,320	1,320	1,270
Dumfries & Galloway	1,010	1,050	890	890	850	720	810	680	680	660	290	240	210	210	190
Dundee City	2,060	2,090	2,190	2,190	2,320	1,180	1,120	1,150	1,150	1,160	880	970	1,040	1,040	1,160
East Ayrshire	2,140	2,370	2,540	2,540	2,530	920	870	890	890	930	1,220	1,500	1,650	1,650	1,600
East Dunbartonshire	4,270	4,980	5,350	5,350	5,940	570	590	470	470	590	3,700	4,390	4,880	4,880	5,350
East Lothian	620	710	800	800	710	530	640	720	720	620	90	70	80	80	90
East Renfrewshire	3,770	3,660	3,260	3,260	3,060	990	1,130	720	720	620	2,780	2,530	2,540	2,540	2,440
Edinburgh, City of	10,220	9,180	9,910	9,910	9,710	1,880	1,530	1,450	1,450	1,500	8,540	7,650	8,460	8,460	8,210
Eilean Siar	850	810	890	890	980	520	590	670	670	710	330	220	220	220	270
Falkirk	1,970	1,870	1,830	1,680	1,670	1,110	1,040	1,000	850	820	860	830	830	830	850
Fife	5,430	5,740	5,460	8,960	8,530	2,430	2,640	2,460	2,460	2,280	3,000	3,100	3,000	6,500	6,250
Glasgow City	9,320	8,600	8,400	8,400	8,970	3,740	3,600	3,490	3,490	2,960	5,580	5,000	4,910	4,910	6,010
Highland	2,120	1,440	1,580	2,570	3,100	1,580	910	990	990	1,490	540	530	590	1,580	1,610
Inverclyde	2,200	3,420	4,140	9,310	9,570	360	420	470	470	490	1,840	3,000	3,670	8,840	9,080
Midlothian	1,080	1,010	1,090	1,090	1,070	590	510	560	560	370	490	500	530	530	700
Moray	790	830	950	880	930	510	400	410	410	590	280	430	540	470	340
North Ayrshire	2,980	3,160	3,430	3,430	3,210	1,400	1,500	1,730	1,730	1,480	1,580	1,660	1,700	1,700	1,730
North Lanarkshire	4,420	6,240	6,840	6,840	5,600	1,430	1,590	1,330	1,330	1,580	2,990	4,650	5,510	5,510	4,020
Orkney Islands	570	640	640	870	700	330	350	320	320	310	240	290	320	550	390
Perth & Kinross	3,410	3,700	3,880	3,880	4,910	1,700	1,970	1,840	1,840	1,720	1,710	1,730	2,040	2,040	3,190
Renfrewshire	1,560	1,470	1,390	1,390	1,230	1,280	1,150	1,170	1,170	1,030	280	320	220	220	200
Scottish Borders	760	830	1,010	840	820	720	810	990	820	800	40	20	20	20	20
Shetland Islands	1,010	1,090	890	890	1,080	900	950	740	740	940	110	140	150	150	140
South Ayrshire	1,630	1,710	1,750	1,750	1,570	1,370	1,400	1,430	1,430	1,240	260	310	320	320	330
South Lanarkshire	7,720	7,570	8,110	8,110	8,620	2,700	2,530	2,980	2,980	3,290	5,020	5,040	5,130	5,130	5,330
Stirling	1,120	1,160	760	760	750	970	1,030	620	620	580	150	130	140	140	170
West Dunbartonshire	3,010	3,160	3,490	3,490	3,820	620	620	560	560	450	2,390	2,540	2,930	2,930	3,370
West Lothian	680	660	780	780	840	560	490	610	610	650	120	170	170	170	190
All Scotland	85,270	89,730	92,740	103,870	105,690	37,250	36,870	36,040	35,990	35,730	48,020	52,860	56,700	67,880	69,960

Source: Audit Scotland SPI data 2006-2008, Scottish Government 2009.

All figures rounded to the nearest ten. Total may not add up to the sum of components due to rounding

^C - Same methodology used as in 2007/08 making the figure comparable to 2007/08

^N - New methodology used making the figure incomparable to 2007/08 but comparable with 2009/10

Annex 5 – Respite weeks by Local Authority provided to Adults (Aged 18 to 64), 2006/07 to 2009/10.

Local Authority	Total respite weeks provided					Overnight respite weeks provided					Daytime respite weeks provided				
	2006/07	2007/08	2008/09 ^C	2008/09 ^N	2009/10	2006/07	2007/08	2008/09 ^C	2008/09 ^N	2009/10	2006/07	2007/08	2008/09 ^C	2008/09 ^N	2009/10
Aberdeen City	1,270	2,470	2,080	2,080	1,020	340	450	430	430	350	930	2,020	1,650	1,650	670
Aberdeenshire	1,360	940	950	1,140	1,950	1,000	590	650	650	660	360	350	300	490	1,290
Angus	360	410	460	330	370	210	230	250	240	270	150	180	210	90	100
Argyll & Bute	1,050	920	770	770	1,590	100	270	170	170	210	950	650	600	600	1,380
Clackmannanshire	170	1,200	1,220	1,220	1,260	170	210	280	280	300	-	990	940	940	960
Dumfries & Galloway	380	390	360	360	350	140	310	280	280	270	240	80	80	80	80
Dundee City	2,220	2,530	2,560	3,350	3,980	600	630	760	760	920	1,620	1,900	1,800	2,590	3,060
East Ayrshire	910	1,370	1,280	3,360	3,660	490	810	700	700	700	420	560	580	2,660	2,960
East Dunbartonshire	1,120	1,080	1,090	1,090	1,060	300	330	360	360	350	820	750	730	730	710
East Lothian	430	470	440	440	410	410	450	420	420	390	20	20	20	20	20
East Renfrewshire	620	450	570	570	820	500	290	310	310	400	120	160	260	260	420
Edinburgh, City of	7,810	8,230	7,980	7,980	9,190	1,530	1,500	1,520	1,520	1,650	6,280	6,730	6,460	6,460	7,540
Eilean Siar	80	130	140	140	170	70	100	120	120	90	10	30	20	20	80
Falkirk	860	820	810	760	790	600	590	590	540	550	260	230	220	220	240
Fife	1,650	1,930	1,560	8,370	10,750	1,240	1,430	1,130	1,130	1,510	410	500	430	7,240	9,240
Glasgow City	14,490	14,150	12,790	12,790	10,410	1,900	1,930	2,030	2,030	2,070	12,590	12,220	10,760	10,760	8,340
Highland	1,160	1,370	1,300	1,300	1,470	710	740	680	680	760	450	630	620	620	710
Inverclyde	510	3,290	2,410	2,800	2,990	280	300	350	350	370	230	2,990	2,060	2,450	2,620
Midlothian	1,220	1,660	1,850	1,850	1,980	330	300	430	430	460	890	1,360	1,420	1,420	1,520
Moray	1,190	690	620	620	710	550	430	400	400	450	640	260	220	220	260
North Ayrshire	1,830	830	960	960	1,110	570	560	670	670	760	1,260	270	290	290	350
North Lanarkshire	4,550	3,210	5,480	5,480	5,110	1,200	1,250	1,190	1,190	1,160	3,350	1,960	4,290	4,290	3,950
Orkney Islands	650	650	590	810	740	110	110	90	90	90	540	540	500	720	650
Perth & Kinross	620	780	890	890	1,060	440	500	560	560	450	180	280	330	330	610
Renfrewshire	1,660	1,740	1,680	1,680	1,880	960	960	1,080	1,080	1,100	700	780	600	600	780
Scottish Borders	640	430	560	560	670	530	310	440	440	530	110	120	120	120	140
Shetland Islands	300	240	350	350	310	250	210	290	290	270	50	30	60	60	40
South Ayrshire	660	550	570	570	560	310	240	320	320	320	350	310	250	250	240
South Lanarkshire	1,640	1,890	2,160	2,160	2,540	870	990	1,090	1,090	1,380	770	900	1,070	1,070	1,160
Stirling	170	190	200	200	220	150	160	170	170	180	20	30	30	30	40
West Dunbartonshire	3,660	3,520	3,160	3,160	3,250	320	380	450	450	570	3,340	3,140	2,710	2,710	2,680
West Lothian	530	530	650	980	1,390	470	470	570	570	630	60	60	80	410	760
All Scotland	55,770	59,050	58,460	69,070	73,800	17,650	18,030	18,760	18,690	20,180	38,120	41,020	39,700	50,380	53,620

Source: Audit Scotland SPI data 2006-2008, Scottish Government 2009.

All figures rounded to the nearest ten. Total may not add up to the sum of components due to rounding.

^C - Same methodology used as in 2007/08 making the figure comparable to 2007/08

^N - New methodology used making the figure incomparable to 2007/08 but comparable with 2009/10

Annex 6 – Respite weeks by Local Authority provided to Young People (Aged 0 to 17), 2006/07 to 2009/10.

Local Authority	Total respite weeks provided					Overnight respite weeks provided					Daytime respite weeks provided				
	2006/07	2007/08	2008/09 ^C	2008/09 ^N	2009/10	2006/07	2007/08	2008/09 ^C	2008/09 ^N	2009/10	2006/07	2007/08	2008/09 ^C	2008/09 ^N	2009/10
Aberdeen City	1,220	1,320	780	300	360	160	200	170	170	180	1,060	1,120	610	130	180
Aberdeenshire	610	1,450	1,410	1,410	1,600	160	160	130	130	140	450	1,290	1,280	1,280	1,460
Angus	180	200	220	220	300	90	120	120	120	140	90	80	100	100	160
Argyll & Bute	730	770	760	760	870	160	180	250	250	220	570	590	510	510	650
Clackmannanshire	200	240	250	250	230	50	80	50	50	40	150	160	200	200	190
Dumfries & Galloway	970	880	740	740	780	460	210	270	270	280	510	670	470	470	500
Dundee City	630	760	700	700	730	330	280	250	250	260	300	480	450	450	470
East Ayrshire	260	200	290	290	340	210	160	190	190	170	50	40	100	100	170
East Dunbartonshire	490	480	510	510	610	120	120	130	130	150	370	360	380	380	460
East Lothian	460	560	460	460	540	140	120	120	120	150	320	440	340	340	390
East Renfrewshire	680	450	540	540	540	270	100	170	170	180	410	350	370	370	360
Edinburgh, City of	4,310	3,820	3,400	3,400	2,920	1,540	910	960	960	960	2,770	2,910	2,440	2,440	1,960
Eilean Siar	70	70	70	70	70	30	20	20	20	20	40	50	50	50	50
Falkirk	600	560	690	790	860	190	150	250	250	280	410	410	440	540	580
Fife	610	690	950	1,340	1,190	290	260	410	410	320	320	430	540	930	870
Glasgow City	2,240	2,470	1,780	1,780	2,270	1,180	1,400	1,010	1,010	1,180	1,060	1,070	770	770	1,090
Highland	1,140	1,050	990	990	1,130	540	490	470	470	510	600	560	520	520	620
Inverclyde	290	290	250	250	210	140	130	120	120	110	150	160	130	130	100
Midlothian	510	420	470	390	490	360	110	140	60	60	150	310	330	330	430
Moray	290	300	300	300	310	150	140	130	130	190	140	160	170	170	120
North Ayrshire	410	500	490	490	440	210	290	230	230	220	200	210	260	260	220
North Lanarkshire	610	560	480	480	320	340	340	300	300	270	270	220	180	180	50
Orkney Islands	120	110	130	180	210	70	70	80	80	80	50	40	50	100	130
Perth & Kinross	360	380	340	340	350	80	90	80	80	80	280	290	260	260	270
Renfrewshire	1,020	1,010	1,140	950	920	370	400	400	400	440	650	610	740	550	480
Scottish Borders	380	350	370	510	540	150	170	200	320	320	230	180	170	190	220
Shetland Islands	240	260	370	370	370	80	90	140	140	150	160	170	230	230	220
South Ayrshire	710	890	900	900	1,120	160	210	210	210	160	550	680	690	690	960
South Lanarkshire	650	1,210	1,320	1,320	1,470	190	400	450	450	520	460	810	870	870	950
Stirling	540	580	630	630	620	170	150	250	250	120	370	430	380	380	500
West Dunbartonshire	730	730	710	710	690	140	170	190	190	170	590	560	520	520	520
West Lothian	360	390	440	440	490	140	140	130	130	130	220	250	310	310	360
All Scotland	22,610	23,950	22,830	22,770	23,870	8,690	7,850	8,000	8,050	8,200	13,920	16,100	14,830	14,720	15,670

Source: Audit Scotland SPI data 2006-2008, Scottish Government 2009.

All figures rounded to the nearest ten. Total may not add up to the sum of components due to rounding

^C - Same methodology used as in 2007/08 making the figure comparable to 2007/08

^N - New methodology used making the figure incomparable to 2007/08 but comparable with 2009/10

Annex 7: Audit Scotland guidance on Respite Services SPI

ASW 5: Provision of respite services:

- a) Total overnight respite nights provided
- b) % overnight respite nights not in a care home
- c) Total hours daytime respite provided
- d) % daytime respite hours provided not in a day care centre

Definitions

Respite care is a service intended to benefit a carer and the person he or she cares for by providing a short break from caring tasks. The break is made possible through alternative care arrangements. Breaks provided to people without carers are excluded from this performance indicator, which is intended to measure a key element in support for carers. This indicator only concerns respite care provided or purchased by the Council, or by voluntary organisations funded for this purpose by the Council.

A carer is an adult, young person or child who provides a substantial amount of unpaid care on a regular basis for a partner, parent or child, other relative, friend or neighbour who is unable to manage at home without help because of physical or mental ill health, age or disability. Carers may or may not be living with the person for whom they are caring. Exclude people providing such care as a volunteer working for a voluntary organisation or on any contractual basis. "Substantial and regular care" is not defined in carers' legislation and should be interpreted in terms of the impact of the caring role on the individual carer and their family (Scottish Executive Circular CCD 2/2003).

A person cared for is an adult with community care needs, with a carer. Older people (65+) include people with or without dementia, aged 65 and over. Age should be calculated as at 31st March. Other adults (18-64) includes people with learning disabilities, physical disabilities, mental health problems, dementia, HIV/AIDS, drug/ alcohol abuse problems, etc., aged 18 to 64 inclusive.

Respite care breaks may last a few hours or a few weeks and may or may not be repeated at regular intervals. The duration of the service episode must allow the carer a break from caring tasks; for this reason a minimum duration of one hour is required for the service episode to count as respite for the purposes of this performance indicator (normally, the duration of the respite episode will be longer).

The carer may use the break for any non-caring activity he or she chooses. Services that provide additional care alongside the care provided by the carer (to the same or another cared-for person) provide assistance but do not provide a respite break.

There is no maximum duration for the respite break episode. Councils should exercise caution in relation to people who are recorded in information systems as having very long respite episodes; it may be that the care episode was originally provided for respite but is now being provided as long-term care.

The following kinds of respite care should be included:

- all respite care where this is part of a care plan or arranged on an emergency basis
- all respite care, whether it has been provided directly by the council, or secured by the council from another source such as a voluntary or private sector organisation
- any respite care, even if this subsequently becomes longer term or permanent care. (N.B. The original provision needs to have been on a respite basis, and it is only this period which should be reported).

The **types of respite care** relevant for the purposes of reporting in relation to this indicator are:

Row type (Measure)	Setting	Service type		Definition
Overnight (nights)	At home	(1)	Overnight sitter services at home	Support provided in cared-for person's normal residence that enables the carer to be absent, if they wish.
	Away from home	(2)	In a care home	Accommodated away from home in a registered care home. Excludes respite care in hospital in-patient beds or in supported accommodation.
		(3)	In other accommodation with support	Accommodated away from home in accommodation with support.
		(4)	In another's home	Overnight respite care with another family or individual. Holiday breaks* involving overnight stays (unless in care homes or supported accommodation).
Daytime (hours)	At home	(5)	In cared-for person's normal residence	All respite services provided in the home of the cared for person, except overnight. Includes home care and daytime sitter services.
	Away from home	(6)	In a day centre	Day centre attendance (only counted when the provision of a respite care break to the carer is an <i>explicit</i> reason for day centre attendance recorded in the care plan of the carer or the cared-for person).
		(7)	Day activities not in a day centre	Day services and activities outside the home providing respite for the carer and not based in a day centre.
		(8)	Other day respite	Respite care in another family's home in daytime; Holiday breaks* without overnight stay.

Note: *Holiday breaks include opportunities for the carer and cared-for person being supported to go away together, as well as breaks for either carer(s) or cared-for person(s) to go on holiday separately.

In **row (a)** Councils should report the total number of **nights** (for service types 1 to 4 in the table above), and in **row (c)** the total number of respite care **hours** (for service types 5 to 8), received during the reporting year, as rates per 1,000 population, adding up all respite episodes in the year, whether or not the respite care episode started in the previous reporting year or has yet to be completed.

In **row (b)** count the percentage of respite nights in service types 1, 3 and 4. In **row (d)** count the percentage of respite hours in service types 5, 7 and 8.

Respite is a reason for providing a service, and often is not a distinctive type of service. Short duration services provided for the cared-for person, for example emergency admission to hospital, or a programme of rehabilitation, provide the carer with a short break in the normal routine of caring as a by-product of the service provided to the cared-for person. Rehabilitation services and skills training for adults with community care needs are of great benefit to their carers in helping to promote independence. However, none of these services are respite care breaks intended to support carers and are excluded from this performance indicator definition.

Day centre services provided on a regular basis to the cared-for person also provide carers with breaks from care tasks. However, they should only be included in this performance indicator if the provision of a respite care break to the carer is an explicit reason for this service recorded in the care plan of the carer or the cared-for person.

Befriending and sitter services should not be included unless they enable the carer to take a break of at least one hour from caring tasks.

Some care homes (and supported accommodation) have beds specifically designated for respite use: exclude any long-stay residents who have been admitted to such beds. Some residents may be admitted for respite which subsequently becomes long-stay. Count the period from admission up to the point when the reason for their continued residency has changed.

Where the short break involves the carer and person cared for remaining together, for example holidays together, the respite hours or bed-nights should be counted for one person receiving the short break, rather than for two.

The contextual information required is the number of respite nights and hours for each of the eight service types defined above. No information is required on the numbers of recipients.

Sources

Council assessment and care management records and information systems.

Records and information systems used by voluntary organisations providing respite care under Council contract or SLA.

Population data should be based on the mid-year estimates for the year, published by the Registrar General.

Interpretation

The indicator will be affected primarily by the pattern of need and services required, and by the availability of respite care.

EC 8: Provision of respite services

- a) total overnight respite nights provided
- b) % overnight respite nights not in a care home
- c) total hours daytime respite provided
- d) % daytime respite hours provided not in a day care centre

Definitions

Respite care is a service intended to benefit a carer and a child or young person with disabilities he or she cares for by providing a short break from caring tasks. The break is made possible through alternative care arrangements. The indicator is intended to measure a key element in support for carers and only concerns respite care provided or purchased by the Council, or by voluntary organisations funded for this purpose by the Council.

A **carer** is an adult, young person or child who provides a substantial amount of unpaid care on a regular basis for a child with disabilities. Exclude people providing such care as a volunteer working for a voluntary organisation or on any contractual basis. "Substantial and regular care" is not defined in carers' legislation and should be interpreted in terms of the impact of the caring role on the individual carer and their family (Scottish Executive Circular CCD 2/2003).

Children with a disability are children and young people aged 0-17 (as at 31st March) with care requirements arising from learning disabilities, physical disabilities or mental health problems. Children with emotional difficulties should be included only where their difficulties are severe. Do not include breaks provided for children without any disability but who are affected by another's disability, eg a family member.

Respite care breaks may last a few hours or a few weeks and may or may not be repeated at regular intervals. The duration of the service episode must allow the carer a break from caring tasks; for this reason a minimum duration of one hour is required for the service episode to count as respite for the purposes of this performance indicator (normally, the duration of the respite episode will be longer). The carer may use the break for any noncaring activity he or she chooses. Services that provide additional care alongside the care provided by the carer provide *assistance* but do not provide a respite break.

There is no maximum duration for the respite break episode. Councils should exercise caution in relation to people who are recorded in information systems as having very long respite episodes; it may be that the care episode was originally provided for respite but is now being provided as long-term care. Councils are required to have regard to the actions required under the *Arrangements to Look After Children (Scotland) Regulations 1996* when overnight respite care away from home involves episodes longer than 4 weeks, or more than 120 days in one year.

The following kinds of respite care should be included:

- all respite care where this is part of a care plan or arranged on an emergency basis

- all respite care, whether it has been provided directly by the council, or secured by the council from another source such as a voluntary or private sector organisation
- any respite care, even if this subsequently becomes longer term or permanent care. (N.B. The original provision needs to have been on a respite basis, and it is only this period which should be reported).

The **types of respite care** relevant for the purposes of reporting in relation to this indicator are:

Row type (Measure)	Setting	Service type		Definition
Overnight (nights)	At home	(1)	Overnight sitter services at home	Support provided overnight in the child's normal residence that enables the carer to be absent, if they wish.
	Away from home	(2)	In a care home/residential school	Accommodated away from home in a registered care home or residential school. Excludes respite care in hospital in-patient beds or in supported accommodation.
		(3)	In other accommodation with support	Accommodated away from home in accommodation with support
		(4)	In another's home	Overnight respite care with another family or individual. Holiday breaks* involving overnight stays (unless in care homes or supported accommodation).
Daytime (hours)	At home	(5)	In child's normal residence	All respite services provided in child/young person's home, except overnight. Includes home care and daytime sitter services.
	Away from home	(6)	In a day centre	Attendance at a Children & Families centre or any other day centre (only counted when the provision of a respite care break to the carer is an <i>explicit</i> reason for day centre attendance recorded in the care plan of the carer or the child/young person).
		(7)	Day activities not in a day centre	Day services and activities outside the home providing respite for the carer and not based in a day centre.
		(8)	Other day respite	Respite care in another family's home in daytime; Holiday breaks* without overnight stay.

Note: *Holiday breaks include opportunities for the carer and cared-for person being supported to go away together, as well as breaks for either carer(s) or cared-for person(s) to go on holiday separately.

In **row (a)** Councils should report the total number of **nights** (for service types 1 to 4 in the table above), and in **row (c)** the total number of respite care **hours** (for service types 5 to 8), received during the reporting year, as rates per 1,000 population, adding up all respite episodes in the year, whether or not the respite care episode started in the previous reporting year or has yet to be completed.

In **row (b)** count the percentage of respite nights in service types 1, 3 and 4. In **row (d)** count the percentage of respite hours in service types 5, 7 and 8.

Respite is a reason for providing a service, and often is not a distinctive type of service. Short duration services provided for the child/young person with disabilities, for example emergency admission to hospital, or a programme of rehabilitation, provide the carer with a short break in the normal routine of caring as a by-product of the service provided to the child/young person.

Rehabilitation services and skills training for children with disabilities are of great benefit to their carers in helping to promote independence. However, none of these services are respite care breaks intended to support carers and are excluded from this performance indicator definition.

Day centre services provided on a regular basis to a child with disabilities also provide carers with breaks from care tasks. However, they should only be included in this performance indicator if the provision of a respite care break to the carer is an explicit reason for this service recorded in the care plan of the carer or the cared-for person.

Befriending and sitter services should not be included unless they enable the carer to take a break of at least one hour from caring tasks.

Some children's homes may have beds specifically designated for respite use: exclude any non-respite residents who have been admitted to such beds. Some children may be admitted for respite which subsequently becomes non-respite. Count the period from admission up to the point when the reason for their continued residency has changed. Where the short break involves the carer and child/young person remaining together, for example holidays together, the respite hours or bed-nights should be counted for one person receiving the short break, rather than for two.

The **contextual information** required is the number of respite nights and hours for each of the eight service types defined above. No information is required on the numbers of recipients.

Sources

Council assessment and care management records and information systems.

Records and information systems used by voluntary organisations providing respite care under Council contract or SLA.

Population data should be based on the mid-year estimates for the year, published by the Registrar General.

Interpretation

The indicator will be affected primarily by the pattern of need and services required, and by the availability of respite care.

SCOTTISH GOVERNMENT STATISTICIAN GROUP

OUR AIM

To provide relevant and reliable information, analysis and advice that meet the needs of government, business and the people of Scotland.

OBJECTIVES

1. To produce statistics and analysis relevant to user needs by
 - Developing our understanding of customer requirements to ensure statistics are kept relevant and analysis is well targeted;
 - Developing the range of statistics and analysis we produce;
 - Where practicable improving timeliness;
 - Providing more statistics disaggregated by age, gender and ethnicity;
 - Developing more data for small areas through the Neighbourhood Statistics project;
 - Contributing to production of comparable statistics across the UK and internationally.
2. To ensure effective use of our statistics by
 - Contributing more directly to policy processes inside and where possible outside government;
 - Improving access to and presentation of data and analysis;
 - Improving the advice provided on statistics.
3. To work effectively with users and providers by
 - Maintaining arrangements to consult and involve users and providers;
 - Involving users and providers in planning developments in outputs and processes;
 - Minimising the burden on data providers through dropping or streamlining collections as appropriate, to ensure the benefits of the information justify the costs of collection.
4. To develop the quality of statistics by
 - Assuring and improving quality as an integral part of data collection and analysis and through regular reviews in line with National Statistics quality strategy;
 - Developing statistical methods, systems and classifications;
 - Working with the rest of the Government Statistical Service to develop joint approaches/solutions where appropriate.
5. To assure the integrity of statistics by
 - Maintaining and promoting integrity through implementation of the National Statistics Code of Practice and related protocols;
 - Safeguarding the confidentiality of data subjects.
6. To ensure the efficient and effective delivery of statistics products and services by
 - Making best use of all sources including administrative sources;
 - Working with other analysts to maximise the contribution of our own and other analysts' work;
 - Ensuring value for money;
 - Making best use of Information and Communications Technology;
 - Ensuring effective communication within the Statistician Group.
7. To develop our workforce and competences
 - Ensuring recruitment of staff with the necessary skills and potential;
 - Ensuring development of expertise amongst existing staff;
 - Promoting and upholding the standards of the statistics profession.

This is an Official Statistics publication

"This is an Official Statistics publication. It has been produced to high professional standards set out in the Official Statistics Code of Practice Protocol - see <http://www.statisticsauthority.gov.uk/assessment/code-of-practice/code-of-practice-for-official-statistics.pdf>

These statistics undergo regular quality assurance reviews to ensure that they meet customer needs. They are produced free from any political interference."

Details of pre-release access will be provided in the Scottish Government Statistics Website under 'Forthcoming Releases'

Correspondence and enquiries

Enquiries on Respite Care should be addressed to:

Steven Gillespie
Analytical Services Division
Health Directorate
St Andrews House
Edinburgh, EH1 3DG
Telephone: 0131 244 3777; Fax: 0131 244 2371
e-mail: Swstat@scotland.gsi.gov.uk

General enquiries on Scottish Government statistics can be addressed to:

Office of the Chief Statistician
Scottish Government
3 Floor West Rear, St Andrews House
EDINBURGH EH1 3DG
Telephone: (0131) 244 0442; Fax: (0131) 244 2223
e-mail: statistics.enquiries@scotland.gsi.gov.uk

Advice on specific areas of Scottish Government statistical work can be obtained from staff at the telephone numbers given below:

Scottish Government Statistics contacts

Agricultural census and labour force	(0131) 244 6150
Business	(0141) 242 5446
Community Care	(0131) 244 3777
Courts and law	(0131) 244 2227
Environment	(0131) 244 0445
Equality	(0131) 244 0324
Fisheries	(0131) 244 6441
Further and Higher Education	(0141) 242 0273
Health	(0131) 244 3432
Housing	(0131) 244 7236
Income, Tax and Benefits	(0131) 244 2583
Labour market	(0141) 242 5446
Local government finance	(0131) 244 7033
Planning	(0131) 244 0439
Prisons	(0131) 244 2147
Recorded crime	(0131) 244 2635
Schools – pupils and teachers	(0131) 244 1689
Schools – qualifications	(0131) 244 0315
Scottish Government personnel	(0131) 244 3926
Scottish Neighbourhood Statistics	(0131) 244 0442
The Economy	(0131) 244 2234
Transport	(0131) 244 7255

Other contacts for Scottish statistics

Forestry Commission	(0131) 314 6337
General Register Office for Scotland - Vital statistics and publications - Population statistics, census statistics or digital boundary products	(0131) 314 4243 (0131) 314 4254
The Scottish Funding Councils for Higher and Further Education	(0131) 313 6575

For **general enquiries about National Statistics** in the United Kingdom Government contact the National Statistics Public Enquiry Service on

020 7533 5888

minicom: 01633 812399
Email: info@statistics.gov.uk
Fax: 01633 652747
Letters: room DG/18, 1 Drummond Gate,
LONDON SW1V 2QQ

You can also find National Statistics on the internet - go to **www.statistics.gov.uk**

If you would like to be consulted about new or existing statistical collections or receive notification of forthcoming statistical publications, please register your interest on the Scottish Government ScotStat website at **www.scotland.gov.uk/Topics/Statistics/scotstat**

Current contact points, e-mail addresses and the publications listed below as well as a range of other statistical publications can be found on the Scottish Government Web site at **www.scotland.gov.uk/stats**

Further information on the General Register Office for Scotland is available on the website **www.gro-scotland.gov.uk**

Most recent Health Statistical Publications relating to the Community Care theme

Ref no.	Title	Last published	Price
9780755995882	Mental Health Officers, Scotland, 2009/10	31 August 2010	-
9780755994342	Free Personal and Nursing Care, Scotland, 2008/09	29 June 2010	-
9780755993253	Care Homes, Scotland 2009	27 April 2010	-
9780755977529	Home Care Services, Scotland, 2009	24 November 2009	-
9780755977048	Registered Blind & Partially Sighted Persons, Scotland 2009	27 October 2009	-
			-

Additional copies of these publications may be purchased from **Scottish Government Publication Sales, Blackwell's Bookshop, 53 South Bridge, Edinburgh, EH1 1YS**, Telephone: 0131 622 8283 or 0131 622 8258, Fax: 0131 557 8149. Cheques should be made payable to 'Blackwell's Bookshop'.

Complaints and suggestions

If you are not satisfied with our service, please write to the Chief Statistician, Mr Rob Wishart, 3R.01, St Andrews House, Edinburgh, EH1 3DG, Telephone: (0131) 244 0302, e-mail rob.wishart@scotland.gsi.gov.uk. We also welcome any comments or suggestions that would help us to improve our standards of service.

Crown Copyright

Brief extracts from the Crown Copyright material in this publication may be reproduced provided the source is fully acknowledged.

ISBN: 978-0-7559-9661-2

APS Group Scotland
DPPAS10737 (09/10)