

**Population in custody
monthly tables
September 2008
England and Wales**

Ministry of Justice
Statistics bulletin

Published 31 October 2008

Population in custody September 2008 - Key points

Population in custody

- The population in custody on 30 September 2008 was 83,703, 2 per cent more than a year earlier. The population in prisons was 83,274 in Secure Training Centres (STCs) it was 228, and in Secure Children's Homes (SCHs) it was 201.

Population in prison

- The male prison population increased by 3 per cent to 78,854 and the female prison population rose very slightly from 4,416 in September 2007 to 4,420 in September 2008.
- The remand population in prison increased by 5 per cent to 13,706 in September 2008 compared to September 2007. Within this total, the untried population increased 5 per cent to 8,884 and the convicted unsentenced population increased 5 per cent, to 4,822.
- Amongst the remand population the largest percentage increases since September 2007 were seen in sexual offences, burglary and violence against the person, up by 14, 11 and 10 per cent respectively. Decreases were seen in motoring, fraud and forgery and drug offences, down by 15, 7 and 3 per cent respectively.
- There were 67,961 sentenced⁽¹⁾ prisoners at 30 September 2008, an increase of 2 per cent from a year earlier. The largest proportionate increase since September 2007 was for those serving indeterminate sentences (Life sentences and Indeterminate sentences for Public Protection) which increased by 17 per cent.
- Amongst the sentenced⁽¹⁾ prison population fraud and forgery, violence against the person and sexual offences saw the largest percentage increases, up by 6, 5 and 4 per cent from September 2007. The number of people serving sentences for motoring offences saw a decrease since September 2007, down by 13 per cent.
- The adult population in prison was 71,204 at 30 September 2008, an increase of 3 per cent from a year earlier. Over the same time period the young adults saw an increase of 1 per cent to 9,671 and the 15 to 17 year olds saw a decrease of 3 per cent to 2,399.
- The prison population was 113 per cent of the 'In Use CNA' (73,803) at 30 September 2008.
- On 30 September 2008 the foreign national prison population was 11,168. This includes those held under the Immigration Act 1971 (including those in the immigration removal centres Dover, Haslar and Lindholme) as well as those held on remand or serving custodial sentences.
- The largest foreign national population at 30 September 2008 were Jamaican nationals, with a population of 1,110 followed by Nigeria (918), Republic of Ireland (647), Vietnam (486), China (453) and Poland (452).

(1) Includes recalls and excludes fine defaulters

Figure A: Remand population by offence group

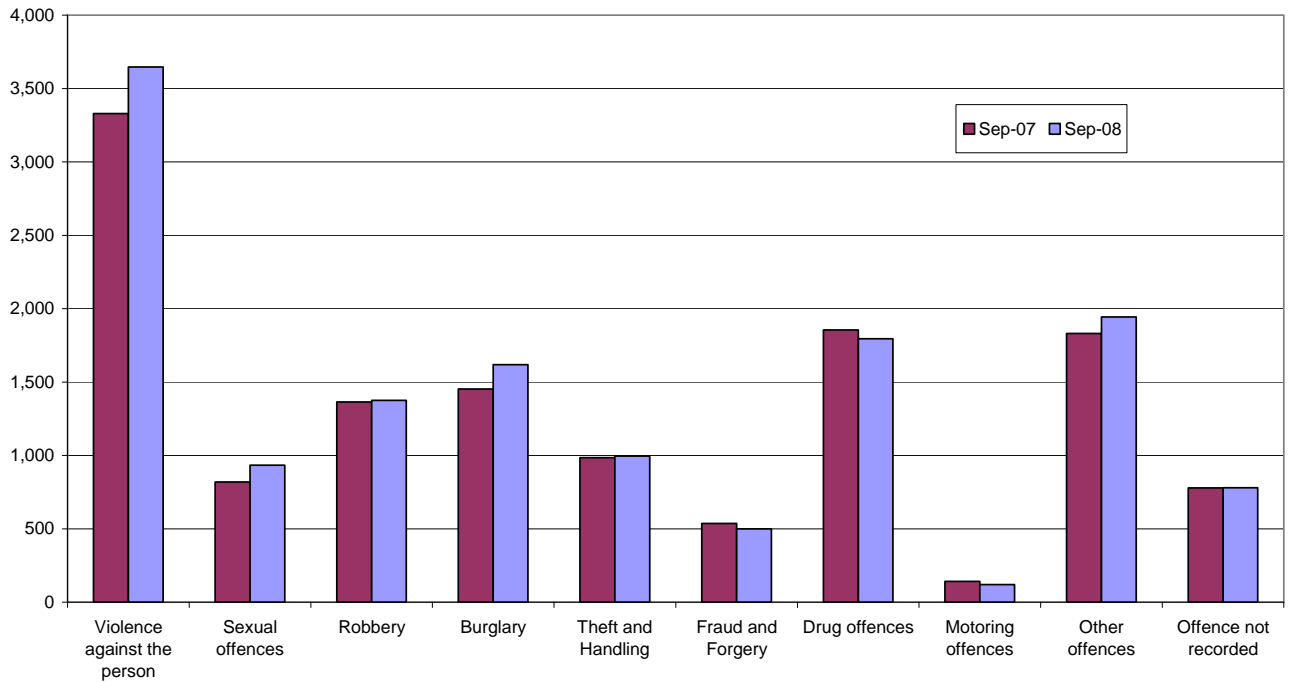
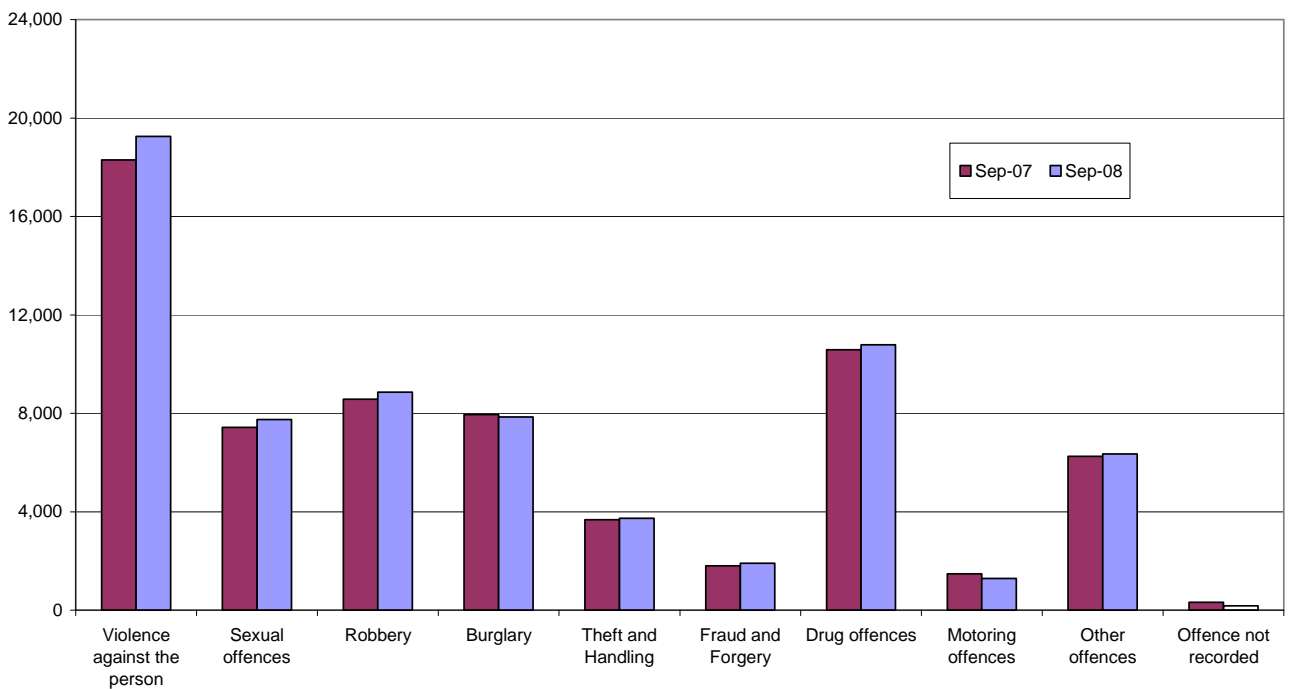


Figure B: Immediate custodial sentenced population by offence group



NOTES

Data sources and quality

The data presented in this brief are drawn from the prison administrative IT systems. Although care is taken when processing and analysing the returns, the detail collected is subject to the inaccuracies inherent in any large-scale recording system. While the figures shown have been checked as far as practicable, they should be regarded as approximate and not necessarily accurate to the last whole number shown in the tables. They are fit to be used for purposes of looking at trends and for comparing the relative magnitude of components.

The prison population information has been drawn from two prison sources. The first source is the routine provision by prison establishments of records of the numbers of persons held in custody at the end of each month, broadly subdivided according to age, sex, custody type and sentence length. The records are collated and processed centrally, to produce the main estimates of the end of month population presented. The second source is the electronically held details for individual inmates such as date of birth, sex, religion, ethnic origin, custody type, offence, and reception and discharge dates and, for sentenced prisoners, sentence length. These data are collected on a central computer database and are used to produce the analyses by offence group and individual year of age. They form the basis of detailed population breakdowns, supplementing the aggregates derived from the first source, to which they are scaled for consistency. A new more detailed method of scaling this information was developed in 2004.

Because the detailed population breakdowns have been scaled and also rounded to the nearest whole number, individual components may not sum to the totals.

Information on the population in STCs and SCHs has been supplied by the Youth Justice Board.

All figures are provisional pending publication of the annual Offender Management Caseload Statistics.

Definitions

Population in custody - this includes those held in prison establishments, police cells under Operation Safeguard, secure training centres (STCs) and secure children's homes (SCHs). This is a change to previous outputs (notably Prison Population Monthly Brief and Prison Statistics England and Wales) where the reference to 'population in custody' just covered those held in prison establishments and police cells. All coverage is for England and Wales.

Population in prison – this includes those held in prisons in England and Wales, including the three removal centres of Dover, Haslar and Lindholme.

Sentenced population – this includes those sentenced to an immediate custodial sentence and fine defaulters.

Immediate custodial sentence – this does not include fine defaulters.

Adult prisoners – these are prisoners aged 21 years and over.

Young adults – these are prisoners aged 18 to 20, but including 21 year old prisoners who were aged 20 or under at conviction who have not been reclassified as part of the adult population

Indeterminate sentences – these cover life sentences and indeterminate sentences for public protection (IPP).

Contact points for further information

Current and previous editions of this publication are available for download at <http://www.justice.gov.uk/publications/populationincustody.htm> . Future reports will be published on a monthly basis. Spreadsheet files of the tables contained in this document are also available for download from this address.

Press enquiries should be directed to the Ministry of Justice press office:

Tel: 020 3334 3536

Email: press.office@justice.gsi.gov.uk

Other enquiries about these statistics should be directed to:

Ministry of Justice
Offender Management and Sentencing – Analytical Services
2nd Floor Fry Building
2 Marsham Street
London
SW1P 4DF
Tel: 020 7035 3470

General enquiries about the statistical work of the Ministry of Justice can be e-mailed to: statistics.enquiries@justice.gsi.gov.uk

General information about the official statistics system of the UK is available from www.statistics.gov.uk

© Crown copyright
Produced by the Ministry of Justice

Alternative formats are available on request from statistics.enquiries@justice.gsi.gov.uk

Table 1: Population in custody: by type of custody and sex

	Sep-07			Sep-08			Percentage change 2007 to 2008		
	Males	Females	Total	Males	Females	Total	Males	Females	Total
All population in custody, of which	77,085	4,584	81,669	79,164	4,539	83,703	3	-1	2
Prisons	76,439	4,416	80,855	78,854	4,420	83,274	3	0	3
Police cells	314	0	314	0	0	0	*	*	*
SCHs	183	62	245	168	33	201	-8	*	-18
STCs	149	106	255	142	86	228	-5	-19	-11
All population in prison, of which	76,439	4,416	80,855	78,854	4,420	83,274	3	0	3
Remand	12,153	935	13,088	12,773	933	13,706	5	0	5
Untried	7,870	625	8,495	8,264	620	8,884	5	-1	5
Convicted unsentenced	4,283	310	4,593	4,509	313	4,822	5	1	5
Under sentence	63,020	3,422	66,442	64,662	3,410	68,072	3	0	2
Fine defaulter	79	7	86	94	17	111	19	*	29
Less than or equal to 6 months	5,110	481	5,591	5,201	507	5,708	2	5	2
Greater than 6 months to less than 12 months	2,444	236	2,680	2,397	241	2,638	-2	2	-2
12 months to less than 4 years	21,674	1,243	22,917	22,556	1,259	23,815	4	1	4
4 years or more (excluding Indeterminate sentences)	24,082	1,144	25,226	23,117	1,024	24,141	-4	-10	-4
Indeterminate sentences	9,631	311	9,942	11,297	362	11,659	17	16	17
Non-criminal prisoners	1,266	59	1,325	1,419	77	1,496	12	31	13
All adult population in prison, of which	64,921	3,916	68,837	67,277	3,927	71,204	4	0	3
Remand	9,670	800	10,470	10,300	814	11,114	7	2	6
Untried	6,335	544	6,879	6,718	545	7,263	6	0	6
Convicted unsentenced	3,335	256	3,591	3,582	269	3,851	7	5	7
Under sentence	54,079	3,061	57,140	55,671	3,040	58,711	3	-1	3
Fine defaulter	75	7	82	90	17	107	20	*	30
Less than or equal to 6 months	3,809	407	4,216	3,933	421	4,354	3	3	3
Greater than 6 months to less than 12 months	1,773	208	1,981	1,759	206	1,965	-1	-1	-1
12 months to less than 4 years	17,083	1,074	18,157	17,975	1,097	19,072	5	2	5
4 years or more (excluding Indeterminate sentences)	22,417	1,073	23,490	21,410	958	22,368	-4	-11	-5
Indeterminate sentences	8,922	292	9,214	10,504	341	10,845	18	17	18
Non-criminal prisoners	1,172	55	1,227	1,306	73	1,379	11	33	12
All 15 -17 year olds in prison, of which	2,417	68	2,485	2,326	73	2,399	-4	7	-3
Remand	529	15	544	520	17	537	-2	*	-1
Untried	340	9	350	333	11	345	-2	*	-1
Convicted unsentenced	189	6	194	187	6	192	-1	*	-1
Under sentence	1,884	53	1,938	1,806	56	1,862	-4	4	-4
Fine defaulter	0	0	0	0	0	0	*	*	*
Less than or equal to 6 months	488	15	503	435	19	454	-11	*	-10
Greater than 6 months to less than 12 months	290	9	300	262	6	268	-10	*	-10
12 months to less than 4 years	925	21	946	887	23	910	-4	*	-4
4 years or more (excluding Indeterminate sentences)	112	8	120	154	4	158	38	*	32
Indeterminate sentences	69	0	69	69	3	72	-1	*	3
Non-criminal prisoners	3	0	3	0	0	0	*	*	*
All young adults¹ in prison, of which	9,101	432	9,533	9,251	420	9,671	2	-3	1
Remand	1,954	120	2,074	1,953	102	2,055	0	-15	-1
Untried	1,195	72	1,266	1,213	64	1,276	2	-11	1
Convicted unsentenced	759	48	808	740	38	779	-2	*	-4
Under sentence	7,057	308	7,364	7,185	314	7,499	2	2	2
Fine defaulter	4	0	4	4	0	4	*	*	*
Less than or equal to 6 months	813	59	872	833	68	901	3	14	3
Greater than 6 months to less than 12 months	381	19	400	376	28	404	-1	*	1
12 months to less than 4 years	3,666	148	3,814	3,694	139	3,833	1	-6	1
4 years or more (excluding Indeterminate sentences)	1,553	63	1,616	1,553	62	1,615	0	-1	0
Indeterminate sentences	640	19	659	725	18	743	13	*	13
Non-criminal prisoners	91	4	95	113	4	117	24	*	23

¹ Young adults are those aged 18 - 20 and those 21 year olds who were aged 20 or under at conviction who have not been reclassified as part of the adult population

* Indicates that one or both of the comparative numbers are less than 50 which could give rise to misleading percentage changes

Data Sources and Quality

These figures have been drawn from administrative IT systems which, as with any large scale recording system, are subject to possible errors with data entry and processing. See Data Sources and Quality section of report for more information.

Table 2: Population in prison by offence - remand and immediate custodial sentence

	Sep-07		Sep-08		Percentage change 2007 to 2008	
	Remand	Immediate custodial sentence	Remand	Immediate custodial sentence	Remand	Immediate custodial sentence
All prisoners	13,088	66,356	13,706	67,961	5	2
Violence against the person	3,329	18,295	3,647	19,253	10	5
Sexual offences	820	7,426	933	7,751	14	4
Robbery	1,364	8,579	1,375	8,863	1	3
Burglary	1,452	7,946	1,618	7,855	11	-1
Theft and Handling	985	3,671	996	3,737	1	2
Fraud and Forgery	536	1,798	500	1,908	-7	6
Drug offences	1,853	10,586	1,795	10,788	-3	2
Motoring offences	141	1,481	120	1,287	-15	-13
Other offences	1,830	6,254	1,943	6,345	6	1
Offence not recorded	779	321	780	174	0	-46
All male prisoners	12,153	62,941	12,773	64,568	5	3
Violence against the person	3,135	17,568	3,432	18,475	9	5
Sexual offences	806	7,381	922	7,708	14	4
Robbery	1,309	8,273	1,318	8,539	1	3
Burglary	1,389	7,722	1,545	7,656	11	-1
Theft and Handling	873	3,287	883	3,305	1	1
Fraud and Forgery	439	1,541	430	1,667	-2	8
Drug offences	1,693	9,555	1,635	9,898	-3	4
Motoring offences	139	1,456	115	1,271	-17	-13
Other offences	1,677	5,864	1,794	5,890	7	0
Offence not recorded	692	294	700	158	1	-46
All female prisoners	935	3,415	933	3,393	0	-1
Violence against the person	193	727	214	777	11	7
Sexual offences	14	45	12	43	*	*
Robbery	54	306	58	324	7	6
Burglary	63	223	73	199	16	-11
Theft and Handling	111	384	112	432	1	13
Fraud and Forgery	97	257	69	241	-28	-6
Drug offences	161	1,031	160	890	0	-14
Motoring offences	3	25	6	16	*	*
Other offences	153	390	149	455	-3	17
Offence not recorded	86	27	80	16	-7	*

Table 2: Population in prison by offence - remand and immediate custodial sentence

	Sep-07		Sep-08		Percentage change 2007 to 2008	
	Remand	Immediate custodial sentence	Remand	Immediate custodial sentence	Remand	Immediate custodial sentence
All adult prisoners	10,470	57,058	11,114	58,604	6	3
Violence against the person	2,614	15,657	2,858	16,552	9	6
Sexual offences	694	7,032	819	7,323	18	4
Robbery	846	6,328	836	6,610	-1	4
Burglary	1,118	6,715	1,302	6,603	16	-2
Theft and Handling	801	3,097	838	3,210	5	4
Fraud and Forgery	508	1,742	482	1,868	-5	7
Drug offences	1,629	9,823	1,595	9,899	-2	1
Motoring offences	112	1,288	102	1,123	-9	-13
Other offences	1,486	5,114	1,605	5,270	8	3
Offence not recorded	662	263	677	145	2	-45
All adult male prisoners	9,670	54,004	10,300	55,581	7	3
Violence against the person	2,459	15,063	2,673	15,896	9	6
Sexual offences	685	6,987	809	7,281	18	4
Robbery	800	6,091	794	6,354	-1	4
Burglary	1,065	6,515	1,235	6,423	16	-1
Theft and Handling	701	2,735	740	2,805	6	3
Fraud and Forgery	414	1,493	415	1,629	0	9
Drug offences	1,487	8,845	1,452	9,065	-2	2
Motoring offences	109	1,265	96	1,110	-11	-12
Other offences	1,369	4,771	1,482	4,886	8	2
Offence not recorded	583	239	604	132	4	-45
All adult female prisoners	800	3,054	814	3,023	2	-1
Violence against the person	156	594	185	656	18	10
Sexual offences	9	45	10	42	*	*
Robbery	46	236	43	256	*	9
Burglary	53	201	66	180	25	-10
Theft and Handling	100	362	98	406	-2	12
Fraud and Forgery	94	248	67	238	-29	-4
Drug offences	142	978	143	834	1	-15
Motoring offences	3	23	6	13	*	*
Other offences	117	343	123	384	5	12
Offence not recorded	79	24	73	13	-8	*

Table 2: Population in prison by offence - remand and immediate custodial sentence

	Sep-07		Sep-08		Percentage change 2007 to 2008	
	Remand	Immediate custodial sentence	Remand	Immediate custodial sentence	Remand	Immediate custodial sentence
All aged 15-17	544	1,938	537	1,862	-1	-4
Violence against the person	160	465	165	484	3	4
Sexual offences	32	65	31	73	*	12
Robbery	125	495	152	490	22	-1
Burglary	59	310	61	288	3	-7
Theft and Handling	34	185	28	173	*	-6
Fraud and Forgery	5	11	2	1	*	*
Drug offences	44	80	30	106	*	33
Motoring offences	4	29	3	27	*	*
Other offences	66	290	62	214	-7	-26
Offence not recorded	15	8	3	6	*	*
All males aged 15-17	529	1,884	520	1,806	-2	-4
Violence against the person	154	447	164	465	6	4
Sexual offences	32	65	31	72	*	11
Robbery	125	483	148	476	18	-2
Burglary	59	305	60	287	1	-6
Theft and Handling	34	183	26	169	*	-8
Fraud and Forgery	5	9	2	0	*	*
Drug offences	42	79	30	104	*	32
Motoring offences	4	28	3	27	*	*
Other offences	58	278	53	203	-9	-27
Offence not recorded	15	7	3	4	*	*
All females aged 15-17	15	53	17	56	*	4
Violence against the person	6	18	1	19	*	*
Sexual offences	0	0	0	1	*	*
Robbery	0	11	4	14	*	*
Burglary	0	5	1	1	*	*
Theft and Handling	0	2	2	4	*	*
Fraud and Forgery	0	2	0	1	*	*
Drug offences	1	1	0	2	*	*
Motoring offences	0	1	0	0	*	*
Other offences	8	12	9	11	*	*
Offence not recorded	0	1	0	2	*	*

Table 2: Population in prison by offence - remand and immediate custodial sentence

	Sep-07		Sep-08		Percentage change 2007 to 2008	
	Remand	Immediate custodial sentence	Remand	Immediate custodial sentence	Remand	Immediate custodial sentence
All young adults¹	2,074	7,360	2,055	7,495	-1	2
Violence against the person	555	2,172	624	2,217	13	2
Sexual offences	94	330	84	355	-10	8
Robbery	393	1,756	387	1,763	-2	0
Burglary	275	920	255	964	-7	5
Theft and Handling	150	389	130	354	-13	-9
Fraud and Forgery	22	46	15	39	*	*
Drug offences	181	683	169	782	-7	15
Motoring offences	25	164	15	137	*	-16
Other offences	278	851	277	861	-1	1
Offence not recorded	101	49	99	22	-2	*
All male young adults¹	1,954	7,053	1,953	7,181	0	2
Violence against the person	523	2,058	596	2,115	14	3
Sexual offences	89	330	83	355	-7	8
Robbery	385	1,698	376	1,709	-2	1
Burglary	265	902	250	946	-6	5
Theft and Handling	139	369	118	331	-15	-10
Fraud and Forgery	20	39	13	37	*	*
Drug offences	163	631	152	729	-7	16
Motoring offences	25	163	15	134	*	-18
Other offences	250	815	259	801	4	-2
Offence not recorded	95	47	92	22	-2	*
All female young adults¹	120	308	102	314	-15	2
Violence against the person	32	115	29	102	*	-11
Sexual offences	4	0	1	0	*	*
Robbery	8	58	11	54	*	-7
Burglary	10	18	6	18	*	*
Theft and Handling	11	20	12	22	*	*
Fraud and Forgery	2	7	2	2	*	*
Drug offences	18	52	17	53	*	3
Motoring offences	0	1	0	3	*	*
Other offences	28	35	18	60	*	*
Offence not recorded	7	2	7	0	*	*

¹ Young adults are those aged 18 - 20 and those 21 year olds who were aged 20 or under at conviction who have not been reclassified as part of the adult population

* Indicates that one or both of the comparative numbers are less than 50 which could give rise to misleading percentage changes

Data Sources and Quality

These figures have been drawn from administrative IT systems which, as with any large scale recording system, are subject to possible errors with data entry and processing. See Data Sources and Quality section of report for more information.

Table 3: Young population in prison: by type of custody and sex**30 September 2008**

	15	16	17	Total Under 18	18	19	20	21	Total Young Adults ¹
All young population in prisons, of which									
<i>Prisoners on remand</i>	48	134	355	537	659	688	636	72	2,055
untried	31	91	222	345	400	418	395	64	1,276
convicted unsentenced	17	43	133	192	259	270	241	9	779
<i>Prisoners under sentence</i>	196	563	1,103	1,862	1,554	2,450	2,783	712	7,499
Fine defaulter	0	0	0	0	0	4	0	0	4
Immediate custodial sentence	196	563	1,103	1,862	1,554	2,446	2,783	712	7,495
<i>Non-criminal prisoners</i>	0	0	0	0	23	33	37	24	117
All young male population in prisons, of which									
<i>Prisoners on remand</i>	48	134	338	520	627	645	609	72	1,953
untried	31	91	211	333	380	391	377	64	1,213
convicted unsentenced	17	43	127	187	246	254	231	9	740
<i>Prisoners under sentence</i>	196	562	1,048	1,806	1,474	2,348	2,670	693	7,185
Fine defaulter	0	0	0	0	0	4	0	0	4
Immediate custodial sentence	196	562	1,048	1,806	1,474	2,344	2,670	693	7,181
<i>Non-criminal prisoners</i>	0	0	0	0	22	32	35	24	113
All young female population in prisons, of which									
<i>Prisoners on remand</i>	0	0	17	17	32	42	28	0	102
untried	0	0	11	11	19	26	18	0	64
convicted unsentenced	0	0	6	6	12	16	10	0	38
<i>Prisoners under sentence</i>	0	1	55	56	80	102	113	20	314
Fine defaulter	0	0	0	0	0	0	0	0	0
Immediate custodial sentence	0	1	55	56	80	102	113	20	314
<i>Non-criminal prisoners</i>	0	0	0	0	1	1	2	0	4

¹ Young adults are those aged 18 - 20 and those 21 year olds who were aged 20 or under at conviction who have not been reclassified as part of the adult population

Data Sources and Quality

These figures have been drawn from administrative IT systems, which, as with any large scale recording system, are subject to possible errors with data entry and processing. See Data Sources and Quality section of report for more information.

Table 4: CNA and population by sex and establishment

30 September 2008

Establishment	In use CNA ¹	Total Population	Of which:		
			Foreign nationals	UK nationals	Nationality not recorded
Males					
Acklington	946	934	28	905	0
Albany	566	552	60	485	7
Altcourse	794	1,254	95	1,144	15
Ashfield	400	384	27	352	6
Ashwell	599	610	65	544	1
Aylesbury	437	444	61	383	0
Bedford	322	483	93	386	4
Belmarsh	800	913	193	704	17
Birmingham	1,109	1,440	189	1,219	32
Blantyre House	122	120	2	117	1
Blundeston	481	517	91	426	0
Brinsford	545	534	45	489	0
Bristol	424	604	55	542	7
Brixton	606	795	225	555	16
Buckley Hall	346	374	19	355	0
Bullingdon	819	1,029	153	869	7
Bullwood Hall	180	209	194	16	0
Camp Hill	520	564	91	440	34
Canterbury	195	290	281	9	1
Cardiff	532	779	74	696	8
Castington	400	368	15	351	2
Channings Wood	696	724	44	679	0
Chelmsford	541	696	114	563	20
Coldingley	370	388	55	330	3
Cookham Wood	66	50	5	45	0
Dartmoor	629	641	29	612	0
Deerbolt	453	452	12	439	1
Doncaster	771	1,102	110	940	53
Dorchester	145	234	24	205	5
Dovegate	800	842	107	734	1
Dover	316	300	298	0	3
Durham	580	921	76	838	6
Edmunds Hill	371	358	82	276	0
Elmley	753	989	145	825	20
Erlestoke	470	462	54	408	0
Everthorpe	603	677	35	642	0
Exeter	316	496	36	454	6
Featherstone	663	682	70	611	1
Feltham	762	647	147	470	30
Ford	557	557	66	490	1
Forest Bank	800	1,132	84	1,023	25
Frankland	733	725	39	684	2
Full Sutton	592	581	57	523	0
Garth	812	830	59	769	1
Gartree	570	573	44	529	0
Glen Parva	668	784	69	712	3
Gloucester	225	315	20	282	13
Grendon/Spring Hill	529	520	20	500	0
Guys Marsh	520	574	51	523	0
Haslar	160	160	160	0	1
Haverigg	622	626	23	603	0
Hewell ¹	1,175	1,421	200	1,216	5
High down	999	1,102	229	838	36
Highpoint	792	796	176	617	3
Hindley	523	480	15	461	4
Hollesley Bay	345	334	12	321	0
Holme House	857	984	44	936	3
Hull	723	1,024	47	971	5
Huntercombe	360	344	58	281	6
Kennet	174	337	23	314	0
Kingston (Portsmouth)	189	187	17	170	0
Kirkham	590	583	8	574	0
Kirklevington Grange	283	277	0	277	0
Lancaster Castle	159	228	5	223	0
Lancaster Farms	480	490	19	461	11
Latchmere House	207	200	9	191	0
Leeds	700	948	84	857	6
Leicester	210	360	62	291	7
Lewes	623	695	75	612	7
Leyhill	512	490	37	453	0

Table 4: CNA and population by sex and establishment

30 September 2008

Establishment	In use CNA ¹	Total Population	Of which:		
			Foreign nationals	UK nationals	Nationality not recorded
Lincoln	432	711	67	635	9
Lindholme	1,034	1,108	162	900	46
Littlehey	663	725	119	606	0
Liverpool	1,166	1,371	116	1,244	10
Long Lartin	452	442	67	375	0
Lowdham Grange	640	687	104	581	2
Maidstone	451	477	96	380	1
Manchester	948	1,207	197	968	43
Moorland Open	260	248	6	242	0
Moorland Closed	740	768	41	727	0
North Sea Camp	318	309	16	292	1
Northallerton	147	224	5	219	0
Norwich	447	540	63	469	8
Nottingham	379	549	73	462	14
Onley	640	575	55	516	4
Parc	838	1,202	45	1,151	5
Parkhurst	449	489	80	403	6
Pentonville	813	1,130	327	775	30
Peterborough	480	622	104	500	18
Portland	579	613	77	533	3
Preston	453	758	33	720	5
Ranby	972	1,080	100	978	2
Reading	190	255	14	237	4
Risley	1,050	1,083	73	1,009	0
Rochester	472	466	79	387	0
Rye Hill	600	654	135	519	0
Shepton Mallet	162	185	5	180	0
Shrewsbury	178	308	39	266	3
Stafford	701	702	71	631	0
Standford Hill	462	450	42	407	1
Stocken	779	805	74	728	2
Stoke Heath	574	611	17	591	3
Sudbury	581	574	16	558	0
Swaleside	751	766	151	614	1
Swansea	240	422	36	382	3
Swinfen Hall	604	618	46	570	1
The Mount	747	760	219	538	3
The Verne	560	592	359	234	0
The Wolds	320	381	18	363	0
Thorn Cross	322	248	1	246	1
Usk/Prescoed	317	417	17	400	0
Wakefield	748	734	55	677	2
Wandsworth	1,086	1,642	478	1,077	89
Warren Hill	222	207	12	180	15
Wayland	955	1,002	134	863	5
Wealstun	585	553	33	519	1
Wellingborough	638	641	95	545	1
Werrington	160	140	7	127	7
Wetherby	300	317	5	305	6
Whatton	779	828	70	757	0
Whitmoor	464	435	66	366	3
Winchester	380	551	62	487	2
Woodhill	641	815	114	681	21
Wormwood Scrubs	1,176	1,276	457	801	20
Wymott	1,023	1,066	60	1,005	0
TOTAL	69,205	78,854	10,319	67,688	848

Table 4: CNA and population by sex and establishment

30 September 2008

Establishment	In use CNA ¹	Total Population	Of which:		
			Foreign nationals	UK nationals	Nationality not recorded
Females					
Askham Grange	126	95	3	92	0
Bronzefield	450	420	103	269	49
Downview	358	357	73	282	1
Drake Hall	282	255	50	203	1
East Sutton Park	98	87	8	79	0
Eastwood Park	326	324	41	281	2
Foston Hall	283	241	16	222	3
Holloway	500	482	126	338	17
Low Newton	298	317	22	295	0
Morton Hall	392	347	235	110	0
New Hall	393	426	41	378	7
Peterborough	360	356	57	290	10
Send	282	276	38	237	1
Styal	450	437	35	397	5
TOTAL	4,598	4,420	849	3,475	96
Male and female establishment total	73,803	83,274	11,168	71,162	944
Police cells total	*	0	-	-	-
Establishment and police cell total	73,803	83,274	11,168	71,162	944

¹ In Use CNA - Certified Normal Accommodation that is available for immediate use, excludes damaged cells, cells affected by building works and cells taken out of use due to staff shortage

² HMP Hewell was created by an amalgamation of the three former prisons, Blakenhurst, Brockhill and Hewell Grange on 25 June 2008

* On 30th September 2008 up to 400 police cells available under operation safeguard which are not included in the CNA figure

Data Sources and Quality

These figures have been drawn from administrative IT systems which, as with any large scale recording system, are subject to possible errors with data entry and processing. See Data Sources and Quality section of report for more information.

Table 5: Population in prison by nationality and sex
England and Wales, 30th September 2008

Nationality	Male	Female	Total	Nationality	Male	Female	Total
All nationalities	78,854	4,420	83,274				
British nationals	67,688	3,475	71,162				
Foreign nationals	10,319	849	11,168				
Nationality not recorded	848	96	944				
Total Africa	2,790	309	3,099	Total Europe	3,078	194	3,272
Algeria	189	2	191	Albania	169	4	173
Angola	76	3	79	Armenia	5	0	5
Benin	2	0	2	Austria	15	2	17
Botswana	3	0	3	Azerbaijan	3	0	3
Burundi	14	0	14	Belgium	39	2	41
Cameroon	35	6	42	Bosnia and Herzegovina	8	2	10
Central African Republic	17	0	17	Bulgaria	22	11	33
Chad	1	0	1	Croatia	9	1	10
Congo	110	9	119	Cyprus	42	1	43
Congo, Democratic Republic of the	35	0	35	Czech Republic	51	6	58
Egypt	18	0	18	Denmark	8	1	9
Equatorial Guinea	2	0	2	Estonia	12	2	14
Ethiopia	60	3	63	Finland	3	0	3
Gabon	1	0	1	France	140	10	150
Gambia	43	3	45	Georgia	17	0	17
Ghana	179	28	207	Germany	78	10	88
Guinea	19	1	20	Gibraltar	2	0	2
Ivory Coast	40	1	40	Greece	20	3	23
Kenya	56	6	62	Hungary	26	4	30
Liberia	31	6	37	Republic of Ireland	615	32	647
Libyan Arab Jamahiriya	23	0	23	Italy	67	2	69
Malawi	16	1	17	Kazakhstan	4	0	4
Mali	2	0	2	Kyrgyzstan	2	0	2
Mauritania	4	0	4	Latvia	77	6	83
Mauritius	17	1	18	Lithuania	224	7	231
Mayotte	1	0	1	Macedonia	10	0	10
Morocco	37	1	38	Malta	9	0	9
Mozambique	4	0	4	Moldova	32	4	36
Namibia	3	0	3	Monaco	1	0	1
Niger	3	0	3	Netherlands	98	7	105
Nigeria	770	147	918	Norway	5	0	5
Rwanda	16	1	17	Poland	437	15	452
Senegal	6	0	6	Portugal	199	18	217
Seychelles	1	0	1	Romania	164	18	182
Sierra Leone	77	4	81	Russian Federation	85	8	93
Somalia	416	16	432	San Marino	1	0	1
South Africa	131	38	169	Serbia and Montenegro	92	1	92
Sudan	36	3	39	Slovakia	35	4	39
Tanzania	17	0	17	Slovenia	6	1	7
Togo	5	1	6	Spain	49	5	54
Tonga	1	0	1	Sweden	19	5	24
Tunisia	22	0	22	Switzerland	3	0	3
Uganda	73	7	81	Turkey	169	3	172
Western Sahara	1	0	1	Uzbekistan	4	0	4
Zambia	14	1	15				
Zimbabwe	162	22	183	Total Middle East	609	11	620
Total Asia	2,154	152	2,306	Bahrain	1	0	1
Afghanistan	147	0	147	Iran	223	5	228
Bangladesh	174	6	180	Iraq	279	3	282
Bhutan	1	0	1	Israel	28	1	29
China	403	50	453	Jordan	6	0	6
Hong Kong	11	0	11	Kuwait	6	0	6
India	338	12	350	Lebanon	22	1	23
Indonesia	1	0	1	Oman	1	0	1
Korea, DPR (North Korea)	1	0	1	Saudi Arabia	14	1	15
Korea, Republic of	5	0	5	Syrian Arab Republic	11	0	11
Malaysia	28	5	33	United Arab Emirates	10	0	10
Maldives	0	1	1	Yemen, Republic of	8	0	8
Mongolia	5	0	5				
Myanmar	2	0	2	Total North America	119	22	141
Nepal	2	0	2	Canada	23	10	33
Pakistan	396	10	406	United States	96	12	108
Philippines	21	3	24				
Singapore	4	2	6	Total Oceania	54	3	57
Sri Lanka	164	7	171	Australia	26	3	29
Taiwan (Nationalist Chinese)	1	0	1	Fiji	12	0	12
Thailand	10	10	20	French Southern Territories	1	0	1
Vietnam	439	47	486	Kiribati	2	0	2
				New Zealand	13	0	13
Total Central and South America	283	41	324	Total West Indies	1,229	116	1,345
Argentina	3	1	4	Aruba	2	0	2
Belize	1	0	1	Bahamas	4	0	4
Bolivia	8	0	8	Barbados	36	3	39
Brazil	70	11	82	Bermuda	2	0	2
Chile	11	1	12	Cayman Islands	1	0	1
Colombia	85	5	90	Cuba	5	0	5
Costa Rica	4	2	6	Dominica	8	1	9
Ecuador	12	1	13	Dominican Republic	7	0	7
El Salvador	0	1	1	Grenada	9	4	13
French Guiana	1	3	4	Haiti	2	0	2
Guatemala	3	0	3	Jamaica	1,032	78	1,110
Guyana	35	4	39	Montserrat	16	1	17
Honduras	1	0	1	Netherlands Antilles	8	2	10
Mexico	20	8	28	St Kitts and Nevis	2	0	2
Panama	3	0	3	St Lucia	32	15	47
Paraguay	0	1	1	St Vincent and the Grenadines	6	1	7
Peru	3	1	4	Trinidad and Tobago	56	11	67
South Georgia & South Sandwich Islands	1	0	1	Virgin Islands	1	0	1
Suriname	4	1	5				
Uruguay	2	0	2	Total Other	4	0	4
Venezuela	14	1	16				

Data Sources and Quality

These figures have been drawn from administrative IT systems. Care is taken when processing and analysing the returns, but the detail collected is subject to the inaccuracies inherent in any large scale recording system, and so although shown to the last individual, the figure may not be accurate to that level.