

**We should not
over regulate**

**Hi! Would you like
to pop in for a cuppa?**

**NO!! I've not
been 'Government
checked!'**

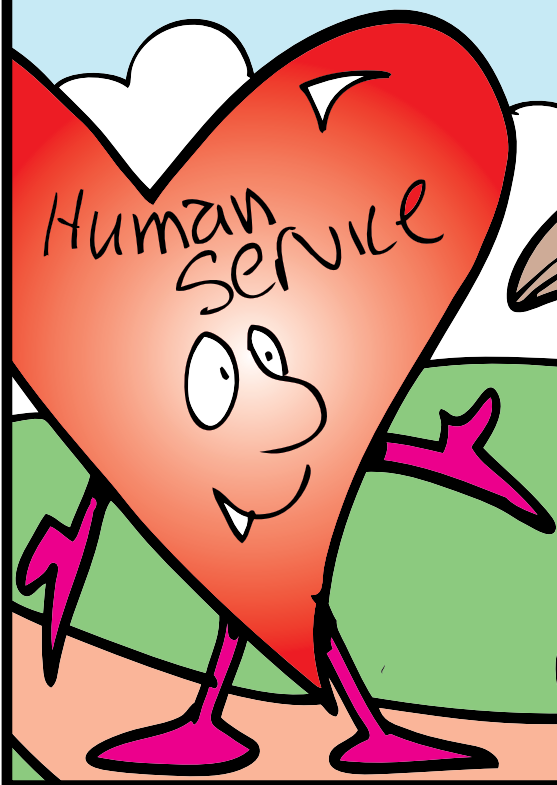
Social Work should not be 'Big Business'

I do this for people,
love and care. NOT to
'carry a briefcase!'



Let's have a return to social
work beliefs and values

'Care management' and
'purchasing of services'
ARE important . .

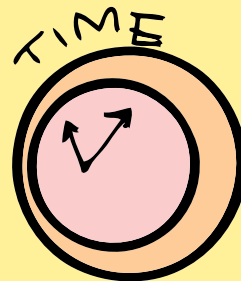


Business
Service

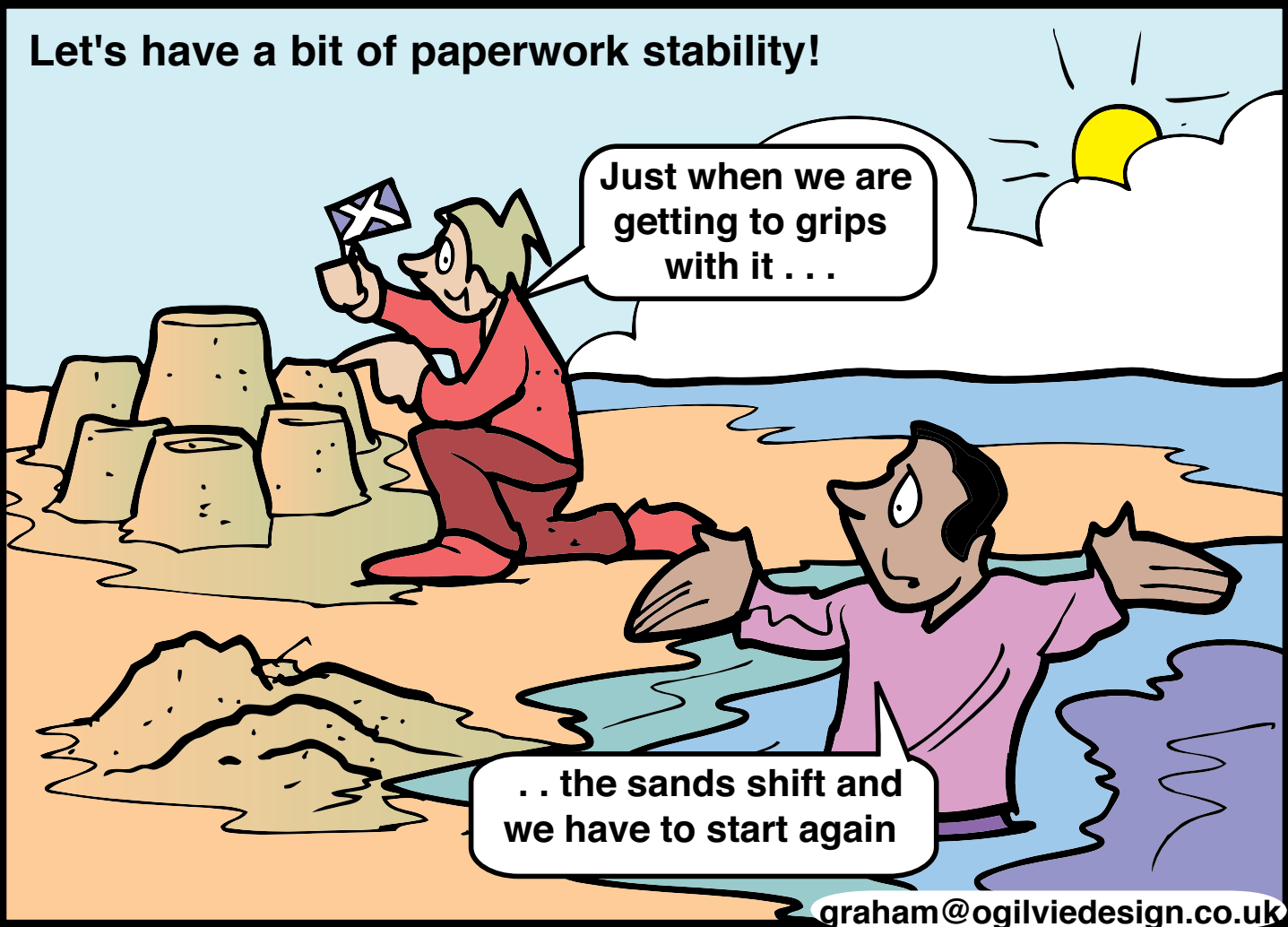
. . but let's keep
it about the
PEOPLE!

**It's the client/worker relationship
that makes the difference**

**We shouldn't feel we
just have to 'throw
services at people'**



Let's have a bit of paperwork stability!



Just when we are getting to grips with it . . .

. . the sands shift and we have to start again

'Outcomes' must be effective and useful!

**Everyone had their
tonsils out when I
was a child**

1952

**Why? Hardly anyone
has that done now!**

It's all too easy to be cynical

Shiney
&
New
Thinking

There are some
brilliant new
ideas around!

Social
work

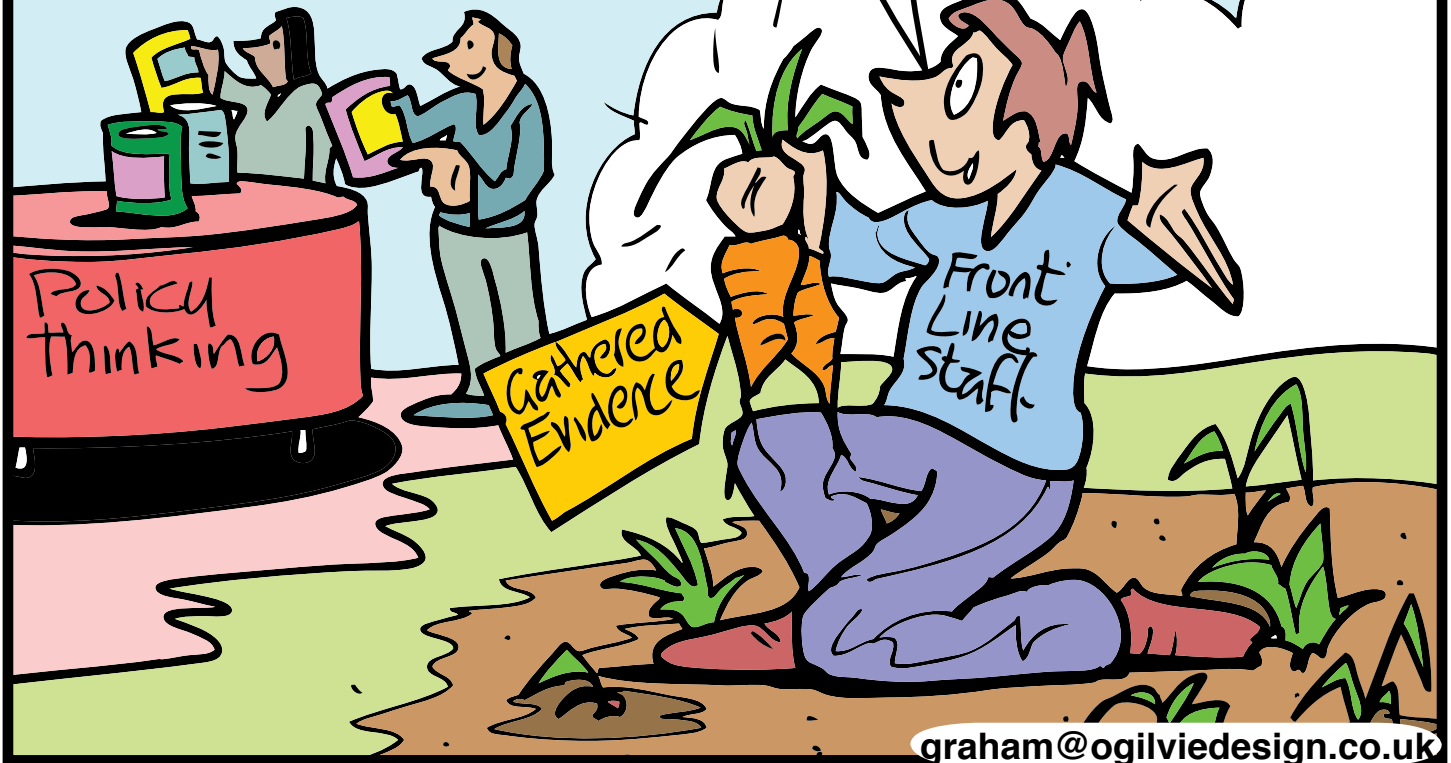
Day to
Day
Pressures

Frontline
Practitioner

.. get real .. you'll
be pressured by time,
budget, red tape ..

Everyone brings something to the table

But what WE bring is fresh and bang up to date. No pre packed or pre prepared input from US!



A great feeling of satisfaction

Is to
WALK AWAY!

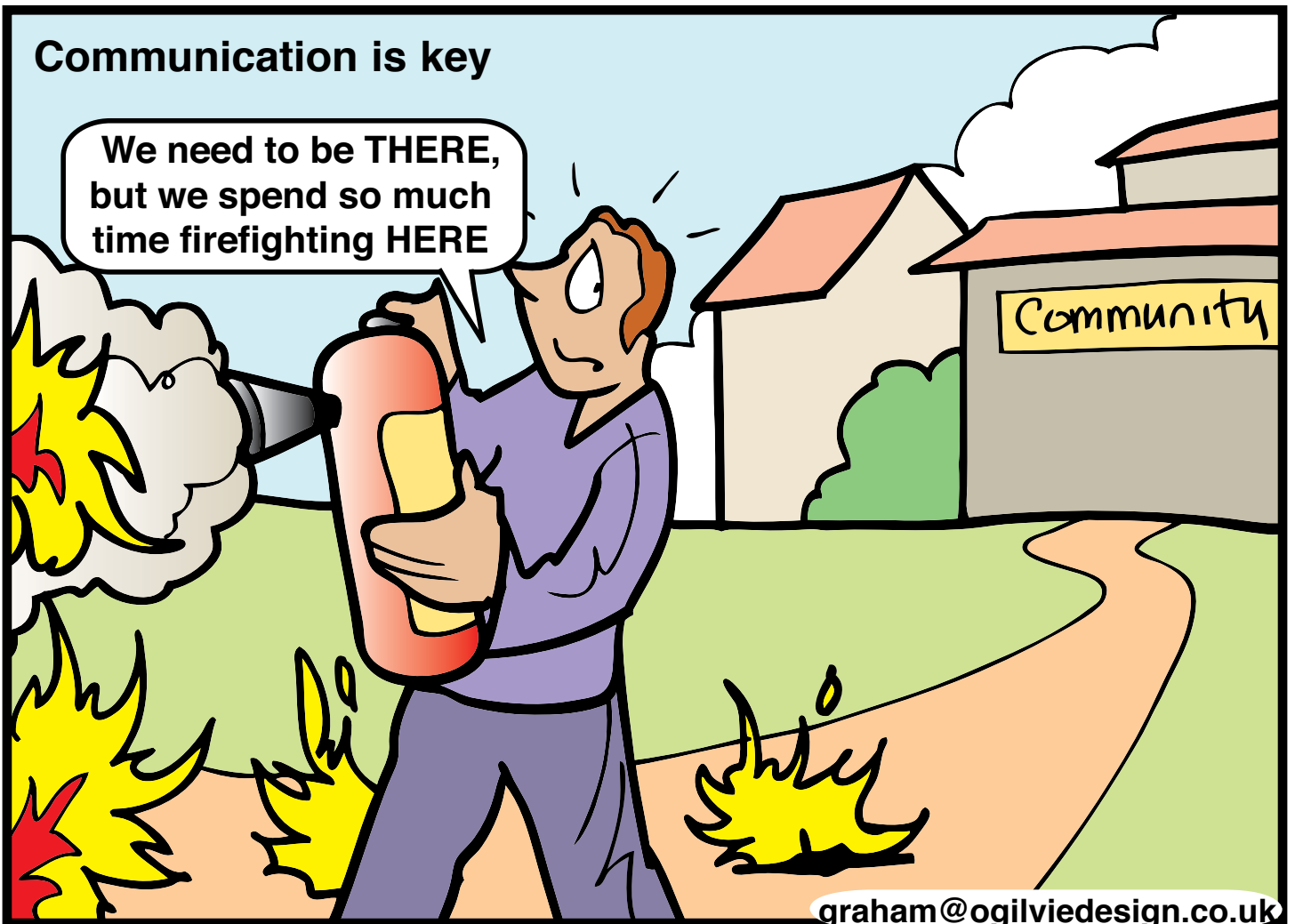
**YOU
CAN
DO IT!**

When I'm left with
independence and
responsibility

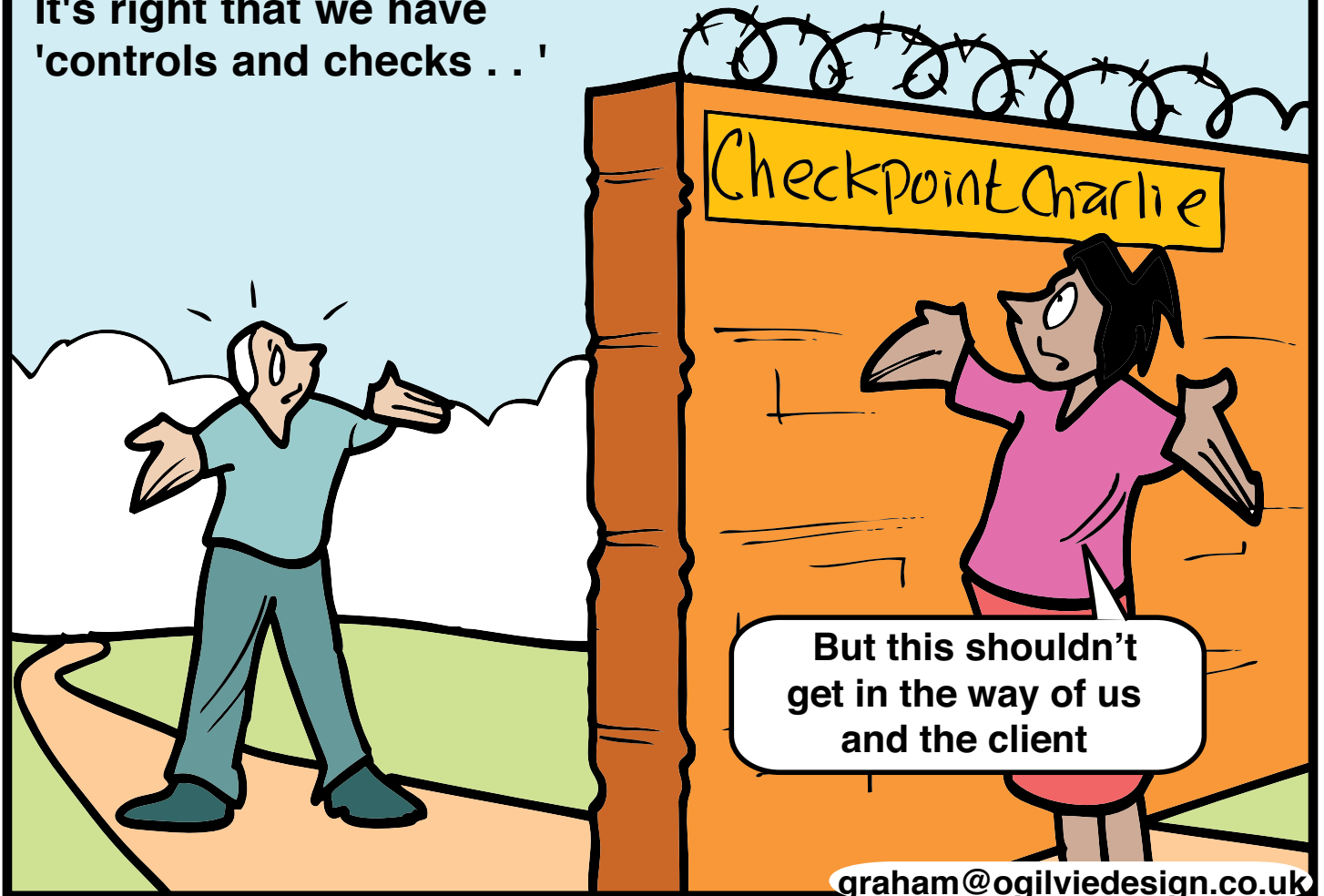


Communication is key

We need to be THERE,
but we spend so much
time firefighting HERE

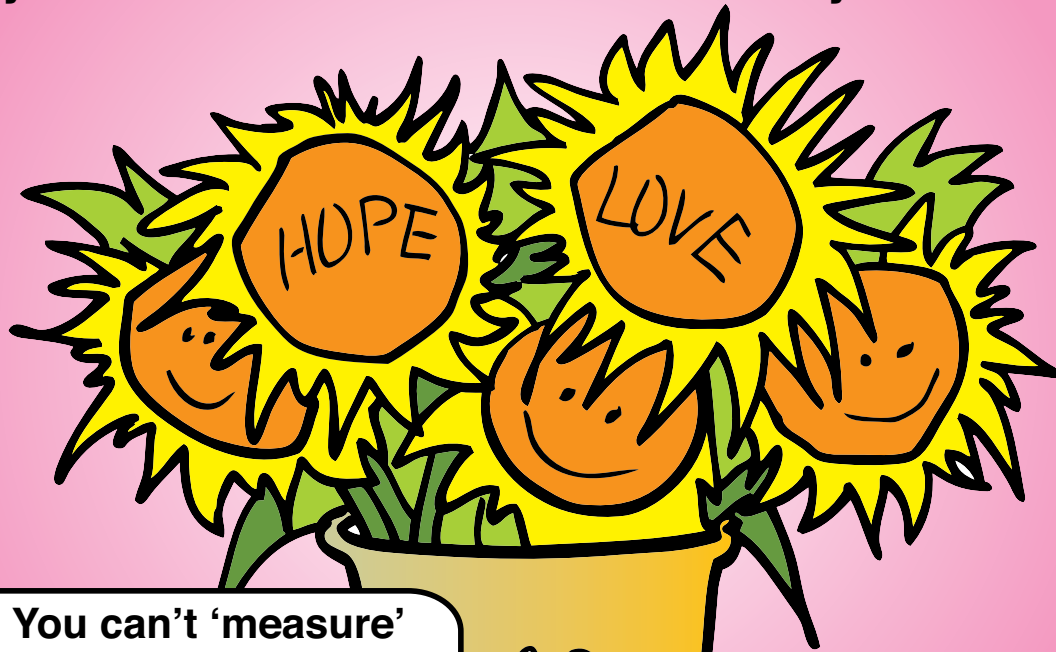


It's right that we have
'controls and checks ...'



But this shouldn't
get in the way of us
and the client

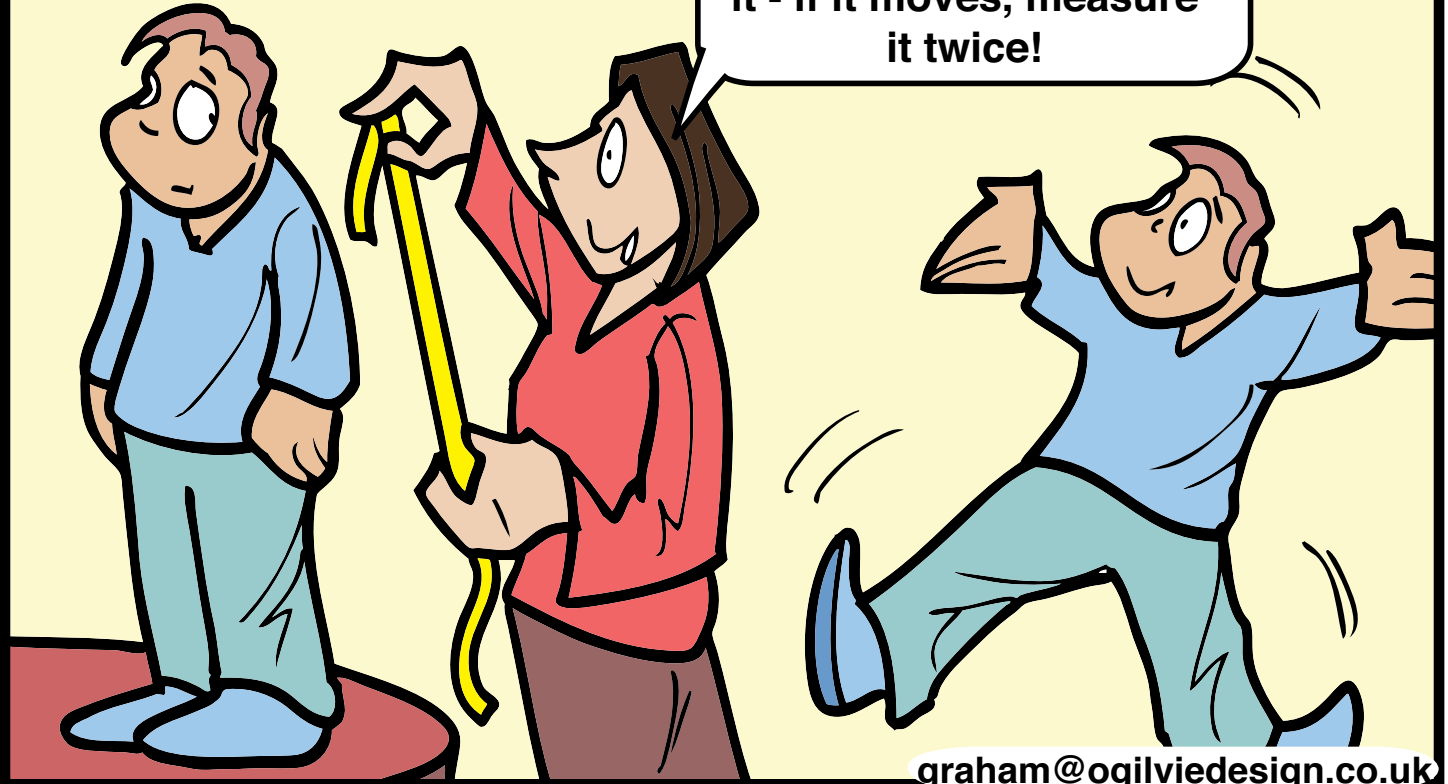
The only REALLY sustainable bits of society . . .



You can't 'measure' me . . I'm all about growth and brightness!

We seem to be obsessed by measuring

**If it stands still, measure
it - if it moves, measure
it twice!**



'Policies' don't help the lives
of anyone

We can produce shelf
loads of this . . .

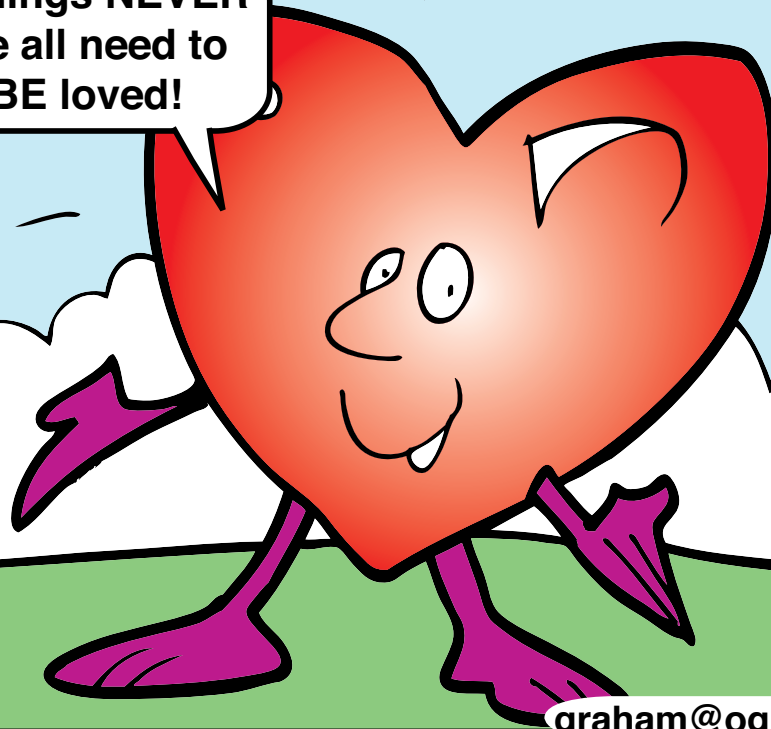


But it's ME who
makes the difference!

Yes, there is lots of change all around . .



But some things **NEVER**
change - We all need to
love and **BE** loved!



Let's work towards **ENABLING** people

I'm not feeling so good
.. DO something about it

• Diet
• Exercise
• Smoking
Cessation

Really? So why don't
YOU take responsibility
for **YOU**?

There are more 'resources' than there are 'finance'

Oh no - We don't
have enough of THIS

No - but we have
LOTS of the ULTIMATE
resource!

People!

Children don't decide where they will be born

Great Western Road...

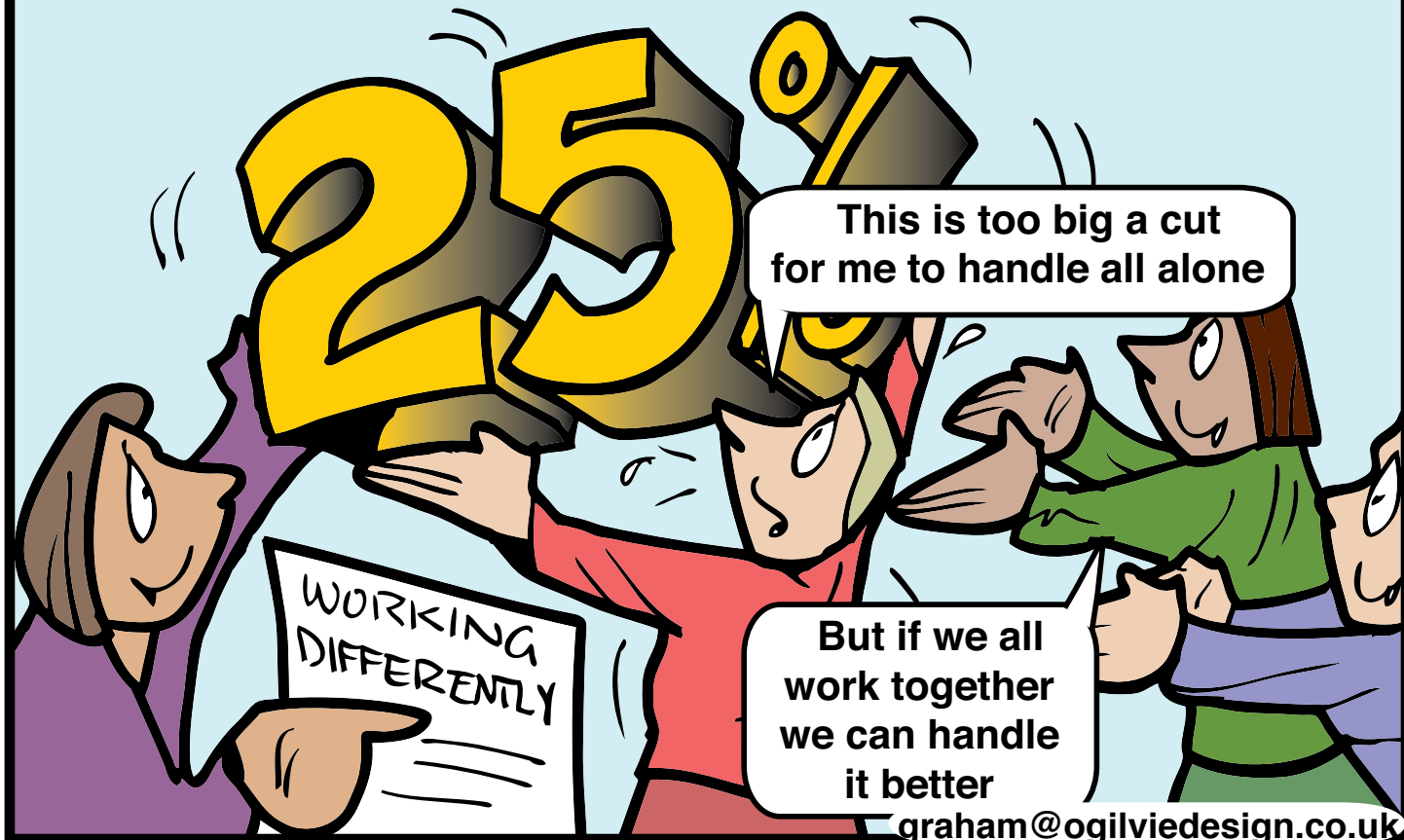
I expect to live into my late 80's

AFFLUENT
SIDE

Really? Every mile along this road reduces MY life expectancy by 6 years!

NOT
AFFLUENT
SIDE

We must think TOGETHER



**This is too big a cut
for me to handle all alone**

**But if we all
work together
we can handle
it better**

graham@ogilviedesign.co.uk

**We are not 'doing a
job for the State'**



**We are doing a job
for HUMANITY! We
are essential!**