

Statistical Bulletin

Crime and Justice Series

A National Statistics Publication for Scotland

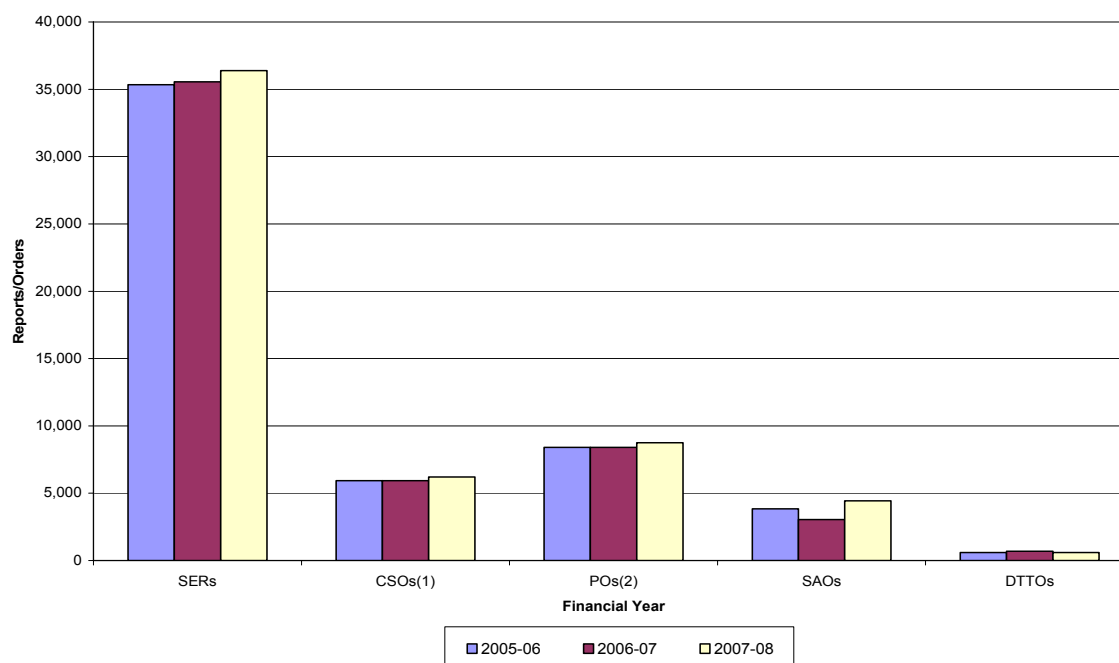


CRIMINAL JUSTICE SOCIAL WORK STATISTICS, 2007-08 9 December 2008

This statistical bulletin presents information on activity relating to community penalties in Scotland, derived from Local Authority Social Work management information systems. Information is presented at a National level; additional information at Local Authority and Community Justice Authority (CJA) level is available on the Scottish Government website.

Total number of reports and orders, 2005-06 to 2007-08

Chart 1



1. Excluding Probation Orders with a requirement of unpaid work.
2. Including Probation Orders with a requirement of unpaid work.

CONTENTS

	Page
1. Key Points	3
2. Social Enquiry Reports	5
3. Community Service Orders	7
4. Probation Orders	8
5. Probation Orders with a Requirement of Unpaid Work	10
6. Supervised Attendance Orders	12
7. Drug Treatment and Testing Orders	13
8. Throughcare, Voluntary Assistance and the Throughcare Addiction Service	15
9. Home Circumstance Reports	17
10. Diversion from Prosecution	17
11. Bail Information and Court Services	18
12. Appendix of Tables	19
13. Annex: Notes and Definitions	38

1. Key Points

In 2007-08:

Social Enquiry Reports

- A total of 42,492 Social Enquiry Reports (including supplementary reports) were submitted by Local Authorities to the Courts in 2007-08, up three per cent from the 2006-07 total of 41,359.
- A total of 36,393 Social Enquiry Reports (excluding supplementary reports) were submitted to the Courts in 2007-08, an increase of two per cent from 35,565 in 2006-07.

Community Service Orders

- A total of 6,202 Community Service Orders (excluding Probation Orders with a Requirement of Unpaid Work) were made in 2007-08, a four and half per cent increase on the 2006-07 figure of 5,937.
- The number of Community Service Orders (excluding Probation Orders with a Requirement of Unpaid Work) which were successfully completed increased by five per cent from 3,569 in 2006-07 to 3,762 in 2007-08. Terminations of Community Service Orders overall (including successful completions) increased by seven per cent from 5,432 in 2006-07 to 5,825 in 2007-08.
- 2,161 breach applications were made to the Courts in respect of Community Service Orders (excluding Probation Orders with a Requirement of Unpaid Work) in 2007-08, an increase of 14 per cent compared with the 1,892 breach applications in 2006-07.

Probation Orders (including those with a requirement of unpaid work)

- A total of 8,751 Probation Orders were made in 2007-08, an increase of four per cent compared to the level of 8,404 in 2006-07.
- The majority (58 per cent) of terminations of Probation Orders were orders which were successfully completed. The number of terminations overall (including successful completions) increased from 6,755 in 2006-07 to 6,849 in 2007-08, an increase of one per cent.
- 3,400 breach applications were made to the Courts in respect of Probation Orders in 2007-08, a 7 per cent decrease compared to the total of 3,650 in 2006-07.

Probation Orders with a Requirement of Unpaid Work

- A total of 3,053 Probation Orders with a Requirement of Unpaid Work were made in 2007-08, representing a 22 per cent increase from the 2006-07 total of 2,499.
- 1,214 breach applications were made to the Courts in respect of POs with a Requirement of Unpaid Work in 2007-08, an increase of five per cent on the 1,157 applications in 2006-07.

Supervised Attendance Orders

- A total of 4,438 Supervised Attendance Orders were made in 2007-08, up 46 per cent from the total of 3,047 in 2006-07.

- Of 2,970 Supervised Attendance Orders which were terminated in 2007-08, 1,685 of these were orders which were successfully completed. The total number of terminations of Supervised Attendance Orders increased by nine per cent on the 2006-07 level of 2,724. 1,311 breach applications were made to the Courts in respect of Supervised Attendance Orders in 2007-08, an increase of 17 per cent from the 2006-07 total of 1,125.

Drug Treatment and Testing Orders

- A total of 601 Drug Treatment and Testing Orders were made in 2007-08, down 14 per cent from 696 in 2006-07.

- Over a third (37 per cent) of DTTO terminations were due to successful completion. The total number of terminations of DTTOs decreased by 11 per cent from 550 in 2006-07 to 491 in 2007-08. In 2007-08 there were 209 breach applications of DTTOs, a decrease of 34 per cent on the 2006-07 figure of 318 breaches.

Statutory Throughcare

- In 2007-08, a total of 1,056 Throughcare (in the community) cases commenced, a decrease of 16 per cent from the 1,256 cases which commenced in 2006-07. A further 1,247 Throughcare (in custody) cases commenced, an increase of two per cent from the 1,228 cases which commenced in 2006-07.

Voluntary Assistance and the Throughcare Addiction Service

- In 2007-08 there were a total of 2,175 individuals receiving voluntary assistance and a total of 2,603 voluntary assistance cases commenced. Of the voluntary assistance cases commenced in 2007-08, 1,424 related to the Throughcare Addiction Service (TAS).

Home Circumstances Reports

- A total of 1,386 HCRs excluding home leave reports were reported in 2007-08, an increase of three per cent on the 2006-07 figure of 1,342. Including home leave reports, 2,701 HCRs were reported in 2007-08.

Diversion from Prosecution

- A total of 956 Diversion from Prosecution cases commenced in 2007-08, a decrease of 16 per cent from the 2006-07 total of 1,133 cases.

Bail Information

- During 2007-08, 7,957 requests were made by Courts to local authorities for bail information, a decrease of 11 per cent since 2006-07. A total of 729 bail supervision cases commenced in the year, relating to 657 individuals.

Court Services

- A total of 2,309 stand down reports were provided to the Courts in 2007-08 and 13,770 post sentence interviews were carried out.

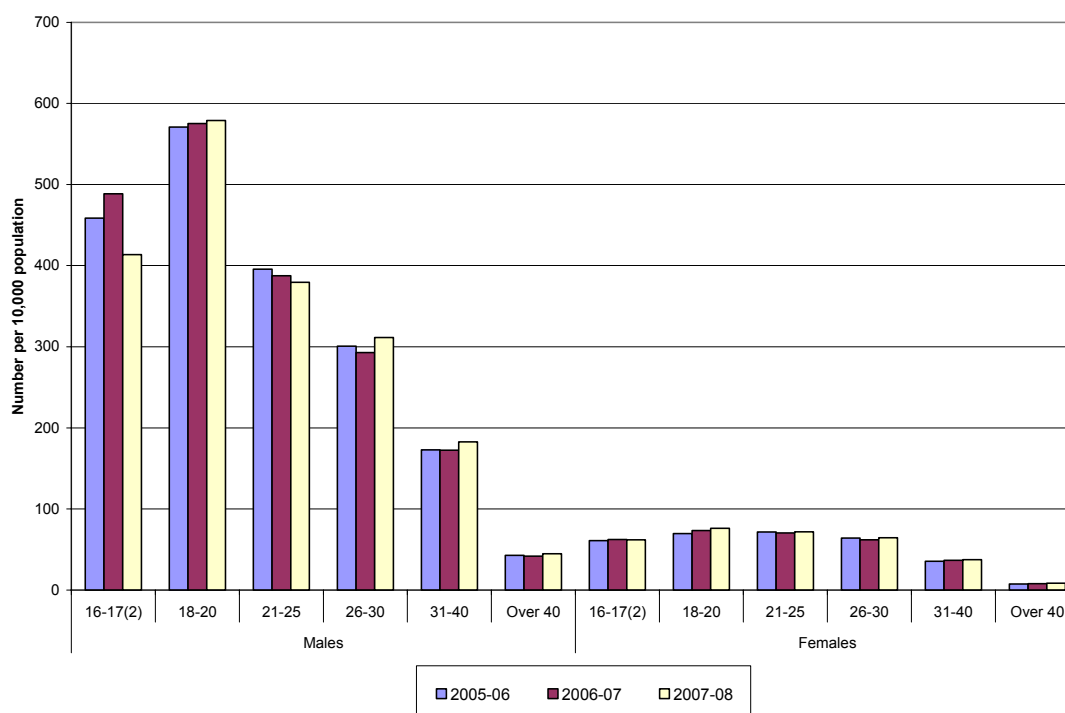
2. Social Enquiry Reports (Chart 2, Tables 1.1 to 1.4 and 2.1 to 2.4)

Social Enquiry Reports, including Supplementary Reports

2.1 A total of 42,492 SERs were submitted in 2007-08 by Local Authorities to the Courts (excluding letters sent in lieu of reports). This is an increase of three per cent from the 41,359 submitted in 2006-07. Also in 2007-08, a total of 50,086 SERs were requested by the Courts, a decrease of one per cent from the 2006-07 total of 50,577.

Number of Social Enquiry Reports⁽¹⁾, 2005-06 to 2007-08

Chart 2



1. Includes Supplementary Reports.
2. Includes a small number of reports relating to clients aged under 16 years.

Social Enquiry Reports, excluding Supplementary Reports

2.2 A total of 36,393 SERs (excluding Supplementary Reports) were submitted to the Courts in 2007-08, a small increase of two per cent compared to the 2006-07 total of 35,565. The majority (85 per cent) of these reports were made in respect of males.

2.3 SERs were most common amongst young adults, accounting for 334 per 10,000 population of 18 to 20 year olds. The incidence of SERs was also relatively common amongst 16 to 17 year olds (243) and 21 to 25 year olds (227 per 10,000 population). It should be noted however, that one person can be the subject of several SERs within a year.

2.4 Males who were the subject of SERs tended to be younger than females, with 29 per cent of reports for males and 21 per cent of those for females relating to under 21 year olds.

2.5 The majority of SERs related to the unemployed (54 per cent) with only 3 per cent of SERs being for people in full time education or on a government sponsored training scheme.

Social Enquiry Reports and Preferred Options

2.6 One of the main purposes of a SER is to offer information and advice which can help the court decide between the available sentencing options. The National Objectives and Standards for Social Work Services in the Criminal Justice System state that: *“Whilst reports must not include a recommendation as such, report writers may indicate, on the basis of their review and assessment, which non-custodial option is in their opinion most likely to prevent or reduce future offending in the event of the court deciding it not necessary to impose a custodial sentence. ... If the offender has been assessed as someone who could pose a risk of serious harm to others, the court will appreciate advice on the desirability of a Supervised Release Order or Extended Sentence in the event of custody.”*

2.7 Seventeen per cent of SERs in 2007-08 gave no preferred sentencing option, a decrease from 20 per cent in 2006-07. Probation was the preferred option in 24 per cent of SERs, just under half being with standard conditions. Probation with additional conditions was a more common preferred option for males (9 per cent) than females (8 per cent) whilst probation with standard conditions was more common for females (12 per cent) than males (10 per cent). A further 15 per cent of reports gave Community Service as the preferred option which tended to be more common for males (15 per cent) than for females (10 per cent). Sixteen per cent gave a deferred sentence of 3 months or more as the preferred option and 9 per cent of SERs suggested a monetary penalty. Custody was rarely suggested, featuring as the preferred option in just over 3 per cent of reports. Around 17 per cent of reports suggested some other form of preferred option (including a RLO or a deferment for a DTTO assessment).

2.8 The main outcome in 19 per cent of SERs was Probation, closely followed by Custody (16 per cent). Other main outcomes were Community Service (14 per cent), Monetary Penalty (10 per cent) and Deferred Sentence (10 per cent).

2.9 Males were more likely to receive Custody (18 per cent) or Community Service (15 per cent) than females (8 per cent and 10 per cent respectively). On the contrary, Probation with Standard Conditions was relatively more common amongst female offenders, accounting for 11 per cent of SERs for females and 7 per cent of those for males.

2.10 The outcomes and preferred options can be grouped into 4 broad categories: Custodial Sentence, Community Sentence (Probation, Community Service, Restriction of Liberty Orders and Deferments for DTTO Assessments), Monetary Penalty and Other/not known (covering all other preferred options and outcomes). Using this grouping (excluding Glasgow City for which this was not available), the main outcome corresponded to the preferred option in 48 per cent of all SERs. For SERs where the preferred option was a Custodial Sentence, the main outcome was a Custodial Sentence in 78 per cent of cases for males and 75 per cent for females. Community Sentences were the main outcome in 43 per cent of SERs for males and

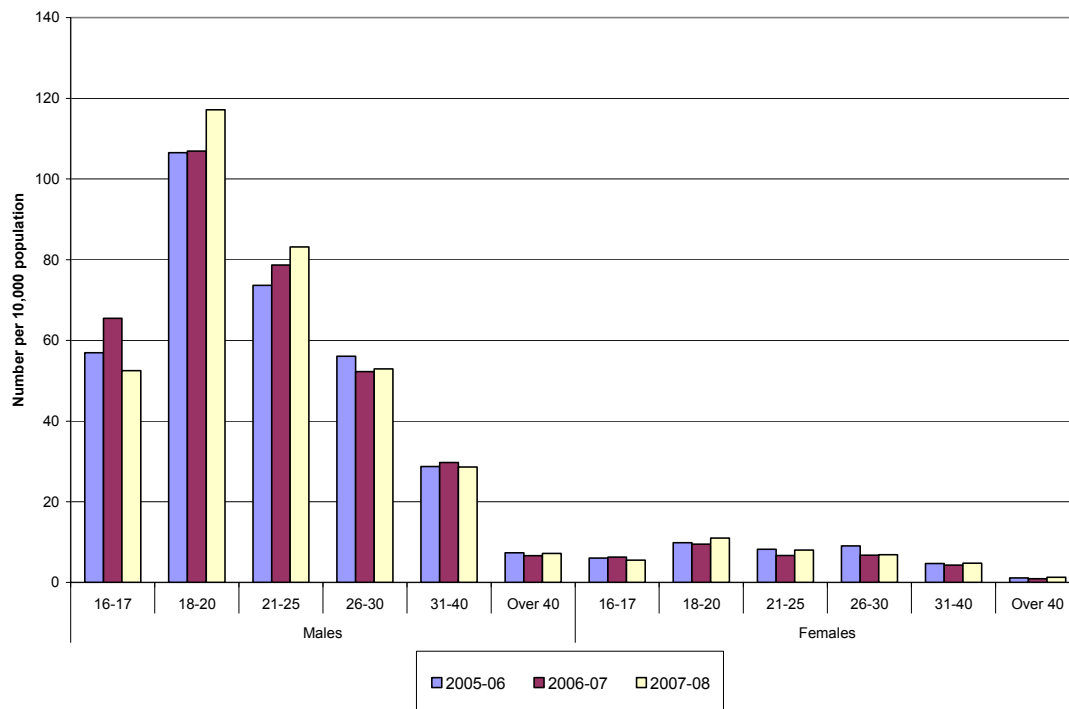
44 per cent of reports for females where a Community Sentence was the preferred option.

3. Community Service Orders, excluding Probation Orders with a Requirement of Unpaid Work (Chart 3, Tables 1.1 to 1.4 and 3.1 and 3.2)

3.1 A total of 6,202 CSOs (excluding Probation Orders with a Requirement of Unpaid Work) were made in 2007-08. This represents an increase of four and a half per cent from the 2006-07 total of 5,937.

Number of Community Service Orders⁽¹⁾ 2005-06 to 2007-08

Chart 3



1. Excludes Probation Orders with a Requirement of Unpaid Work.

3.2 Male offenders accounted for 89 per cent of CSOs (excluding Probation Orders with a Requirement of Unpaid Work).

3.3 CSOs (excluding Probation Orders with a Requirement of Unpaid Work) were relatively more common amongst young offenders, with 65 orders per 10,000 population for 18-20 year olds and 46 orders per 10,000 population for 21-25 year olds. Females receiving CSOs tended to be older, with 59 per cent of such orders relating to over 25 year olds. The corresponding proportion for males was 45 per cent.

3.4 The employment status of offenders provides an indication of whether the offender is likely to be available for work during normal working hours (i.e. weekdays between 9am and 5pm). Fifty-one per cent of CSOs were given to offenders who were either unemployed or not seeking employment. Thirty-eight per cent were employed or self employed, in full time education or on a government sponsored training scheme. A further 10 per cent were recorded under 'other' employment status.

Breach Applications of Community Service Orders

3.5 There were 2,161 breach applications made to the Courts in 2007-08 in respect of CSOs. This represented an increase of 14 per cent compared with the 1,892 breach applications in 2006-07.

3.6 The number of breach applications is not directly comparable with the number of orders provided previously (which covers new orders only) as some of the breach applications may relate to orders started in the previous year. However, as CSOs must be completed within a 12 month period, the number of orders started in 2007-08 (6,202 excluding Probation with Unpaid Work) can be taken as a proxy measure for the number of orders active during the year. This suggests that around 35 per cent of orders resulted in a breach application.

3.7 Seventeen per cent of breach applications resulted in the original order being revoked and a custodial sentence imposed, an increase from 13 per cent in 2006-07. A further 28 per cent of breaches resulted in the original order being revoked and some other action taken (including order revoked and probation imposed and order revoked and monetary penalty imposed). In 11 per cent of applications, the original order was continued and no further action taken by the court and in 3 per cent of applications, a warrant for apprehension/recall was made. The outcome was not yet known for 26 per cent of breach applications made in 2007-08, a decrease from 34 per cent in 2006-07.

3.8 Males accounted for 89 per cent of breach applications. As males also accounted for a similar proportion of all new orders (see paragraph 3.2), this suggests that breach applications are as likely to occur for males as for females.

3.9 An outcome of revoked and custody was more common amongst males (18 per cent) than females (8 per cent). The outcome of order revoked and probation was marginally a more likely outcome for females (5 per cent) than for males (4 per cent).

Terminations of Community Service Orders

3.10 A total of 5,825 CSOs were terminated in 2007-08, an increase of 7 per cent from the 2006-07 total of 5,432. Sixty-five per cent of these orders were successfully completed, five per cent were revoked following a review, 23 per cent of orders were revoked following a breach application to the courts and the remainder were terminated for other reasons (including transfer to another area and death of the offender).

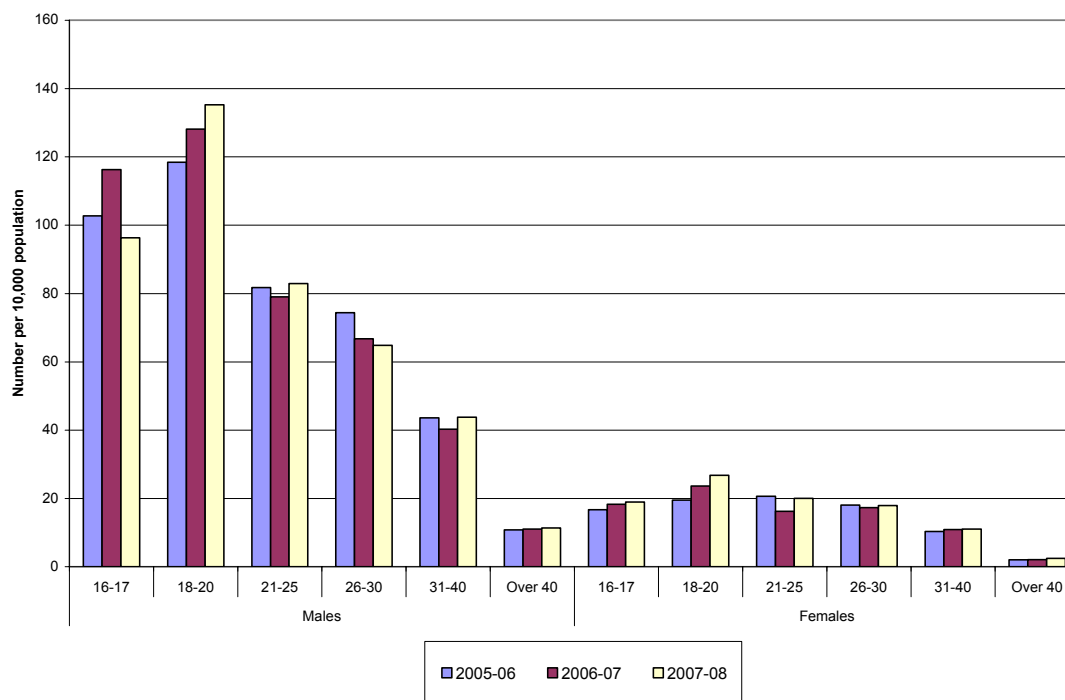
3.11 Females (67 per cent) were slightly more likely to complete their orders successfully than males (64 per cent).

4. Probation Orders (POs) (Chart 4, Tables 1.1 to 1.4 and 4.1 to 4.3)

4.1 A total of 8,751 POs (including POs with a Requirement of Unpaid Work) were made in 2007-08. This is an increase of four per cent compared to the level of orders in 2006-07.

Number of Probation Orders⁽¹⁾, 2005-06 to 2007-08

Chart 4



1. Includes Probation Orders with a Requirement of Unpaid Work.

4.2 Male offenders accounted for 81 per cent of POs. The incidence of POs was highest amongst 18 to 20 year olds (82 per 10,000 population) and was also relatively common amongst 16 to 17 year olds (59) and 21 to 25 year olds (52).

4.3 Males receiving Probation tended to be younger than females, with 29 per cent of POs for males and 23 per cent of those for females being given to offenders aged under 21 years.

4.4 As with Community Service, the employment status of offenders provides an indication of the availability of offenders (see paragraph 3.4). Seventy-one per cent of POs were for offenders who were unemployed or not seeking employment. A further 22 per cent of POs were for offenders in full-time employment, self employed, in full time education or on a government sponsored training scheme.

4.5 Thirty-eight per cent of all POs had standard conditions only. A Requirement of Unpaid Work was made in 31 per cent of Orders, while 11 per cent included conditions of Alcohol and/or Drug Treatment/Education. Information was collected for the first time in 2005-06 on POs with a condition of attendance on a domestic abuse programme or of attendance on a sex offender programme (accredited or non-accredited). POs with a condition of attendance on a domestic abuse programme has decreased since then from two per cent to one per cent and the number of POs with a condition of attendance on a sex offender programme has seen a small decrease (79 cases in 2005-06 and 63 in 2007-08).

4.6 Probation Orders with standard conditions only were more likely to be imposed on females (43 per cent) than males (37 per cent). A Requirement of Unpaid Work was more common amongst males (33 per cent) than females (23 per cent).

Breach Applications of Probation Orders

4.7 There were 3,400 breach applications made to the Courts in 2007-08 in respect of POs, a decrease of 7 per cent compared to the 2006-07 total of 3,650 applications. Males accounted for 83 per cent of breach applications.

4.8 The number of breach applications is not directly comparable with the number of orders provided previously (which covers new orders only) as some of the breach applications may relate to orders started in previous years.

4.9 Seventeen per cent of breach applications resulted in the original order being revoked and a custodial sentence imposed, 12 per cent resulted in the order being revoked and a new probation order imposed, 2 per cent in the order being revoked and a community service order being imposed and 9 per cent in the original order being revoked and some other action taken (including a monetary penalty). In 18 per cent of applications, the original order was continued and no further action taken by the court. The outcome was not yet known in 28 per cent of applications.

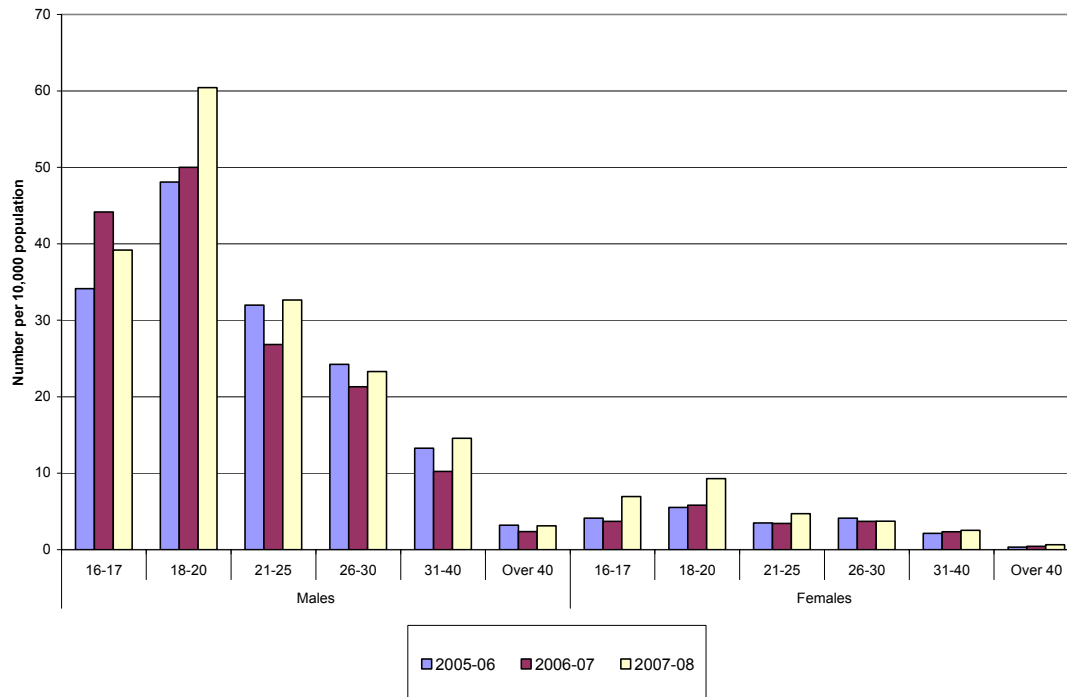
Terminations of Probation Orders

4.10 A total of 6,849 POs were terminated in 2007-08, an increase of one per cent from the 2006-07 total of 6,755. Just under 60 per cent of these orders were successfully completed (including early discharge following a review). Twenty-eight per cent were terminated following a breach application. The remaining 13 per cent of orders were terminated for other reasons (including transfer to another area and death of the offender).

4.11 Females (61 per cent) were slightly more likely to complete orders successfully (including early discharge following a review) than males (58 per cent). A greater proportion of orders were terminated following a breach for males (29 per cent) than females (26 per cent).

5. Probation Orders with a Requirement of Unpaid Work (Chart 5, Tables 5.1 to 5.3)

5.1 These orders represent a subset of the data on all Probation Orders presented previously. A total of 3,053 POs with a Requirement of Unpaid Work were made in 2007-08. This represents an increase of 22 per cent from the 2006-07 total of 2,499 orders.



5.2 Male offenders accounted for 86 per cent of Probation Orders with a Requirement of Unpaid Work. The incidence of POs was highest amongst 18 to 20 year olds (35 per 10,000 population) and was also relatively common amongst 16 to 17 year olds (24) and 21 to 25 year olds (19).

5.3 Female offenders receiving these orders tended to be older than male offenders. Thirty-four per cent of males were aged 20 or under, compared to 31 per cent of females.

5.4 As discussed in paragraphs 3.4 and 4.4, the employment status of offenders provides an indication of their availability to undertake unpaid work. Sixty-one per cent of POs with a Requirement of Unpaid Work were for offenders who were unemployed or not seeking employment. This proportion was higher for females (69 per cent) than males (59 per cent).

Breach Applications of Probation Orders with a Requirement of Unpaid Work

5.5 There were 1,214 breach applications made to the Courts in 2007-08 in respect of POs with a Requirement of Unpaid Work, an increase of five per cent compared to the 2006-07 total of 1,157 applications. In 2007-08, the condition of unpaid work was breached in 575 (47 per cent) of these 1,214 cases.

5.6 Males accounted for 88 per cent of breach applications. Seventeen per cent of breach applications resulted in the original order being revoked and custody being imposed, 12 per cent resulted in the order being revoked and a new probation order imposed, 2 per cent in the order being revoked and a community service order being imposed and 7 per cent in the order being revoked and some other action taken (including a monetary penalty). In 13 per cent of applications, the original order was

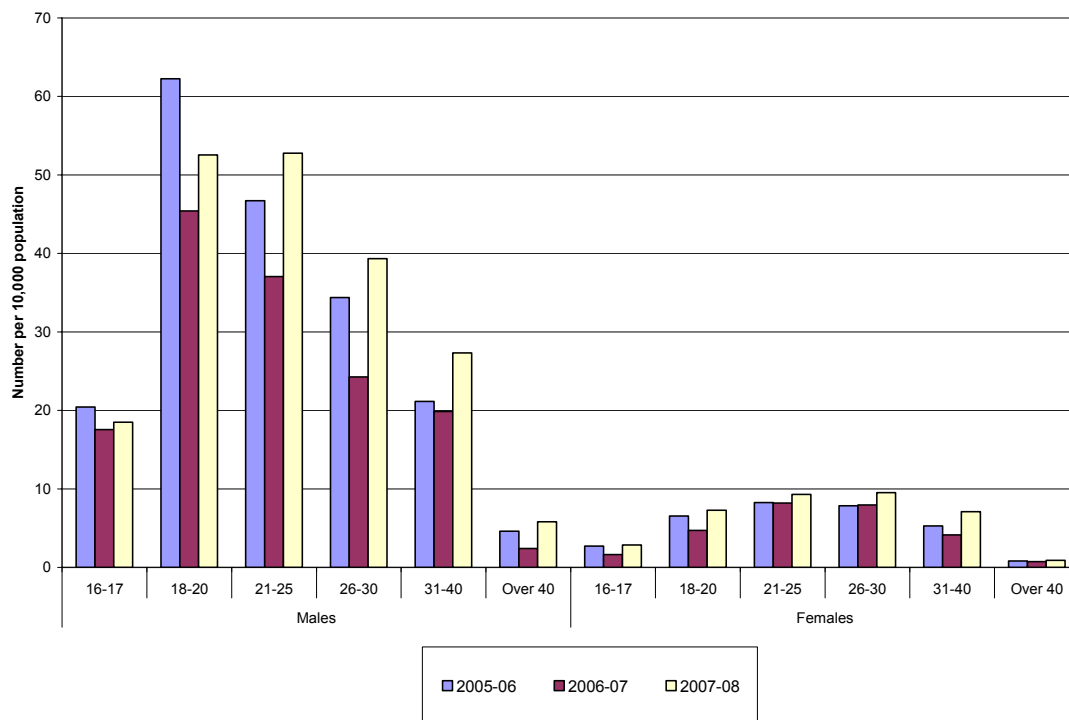
continued and no further action taken by the court. The outcome was not yet known in 29 per cent of applications.

6. Supervised Attendance Orders (Chart 6, Tables 1.1 to 1.4 and 6.1 to 6.4)

6.1 A total of 4,438 SAOs were imposed on 3,768 individual offenders in 2007-08, an increase of 46 per cent in the number of orders compared to 2006-07. Eighty three per cent of SAOs were made in respect of males.

Number of Supervised Attendance Orders, 2005-06 to 2007-08

Chart 6



6.2 The incidence of SAOs was highest amongst 21 to 25 year olds (31 per 10,000 population) followed by 18 to 20 year olds (30) and 26 to 30 year olds (25).

6.3 Females receiving SAOs tended to be older than males, with 67 per cent of orders for females and 57 per cent for males being given to offenders aged over 25 years. In addition, 18 per cent of orders for males and 12 per cent for females were made to offenders aged under 21 years.

6.4 Sheriff Courts imposed the largest number of SAOs (45 per cent of the total), however this proportion has been decreasing in recent year and the number imposed by the Stipendiary Magistrate Court has continued to increase.

6.5 The majority (67 per cent) of SAOs were made to offenders who were unemployed or not seeking employment, down from 81 per cent in 2006-07.

Breach Applications of Supervised Attendance Orders

6.7 There were 1,311 breach applications in respect of SAOs made to the Courts in 2007-08, 17 per cent more than in 2006-07. The number of individuals with breach applications was 1,140, an increase of 14 per cent from the 2006-07 total of 996.

6.8 The number of breach applications is not directly comparable with the number of orders provided previously (which covers new orders only) as some of the breach applications may relate to orders started in the previous year. However, as SAOs are expected to be completed within a 12 month period (and usually within 6 months), the number of orders started in 2007-08 (4,438) can be taken as a proxy measure for the number of orders active during the year. This suggests that just under one in three orders result in a breach application.

6.9 Forty-nine per cent of breach applications were made to Sheriff Courts with a further 17 per cent to Stipendiary Magistrates and 34 per cent to the District Courts. The majority of breach applications (84 per cent) were made in respect of males.

6.10 In 2007-08, 13 per cent of breach applications resulted in the original order being revoked and a custodial sentence being imposed (up 2 per cent in 2006-07). A further 16 per cent were continued without further action (the same level as in 2006-07) and 7 per cent were continued with hours varied (the same level as in 2006-07). The outcome was not yet known for 29 per cent of breach applications, down slightly from 31 per cent in 2006-07.

Terminations of Supervised Attendance Orders

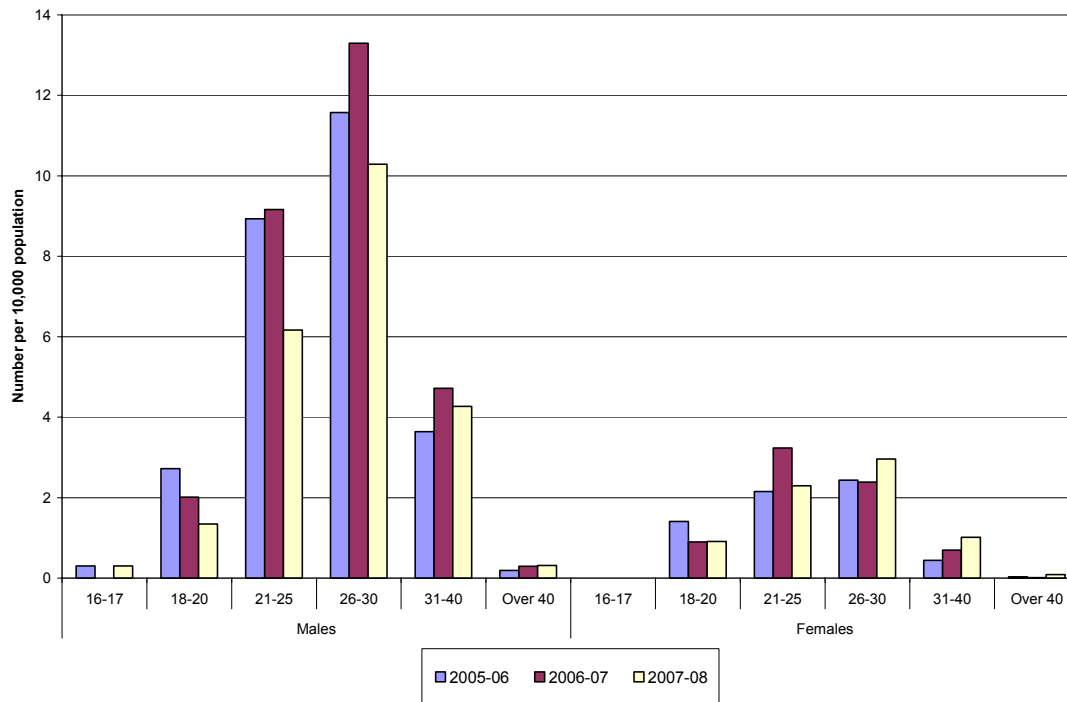
6.11 A total of 2,970 SAOs were terminated in 2007-08, an increase of 9 per cent from the previous year's total of 2,724. The majority (57 per cent) were successfully completed, 10 per cent were revoked following a review, 27 per cent of orders were revoked following a breach application to the court and the remainder were terminated for other reasons (including transfer to another area and death of the offender).

7. Drug Treatment and Testing Orders (Chart 7, Tables 1.1 to 1.4 and 7.1 to 7.2)

7.1 From 2005-06 the Drug Treatment and Testing Order has been available for use in almost every court in Scotland. A total of 601 DTTOs were made in 2007-08, a decrease of 14 per cent since 2006-07. In 2007-08 1,547 DTTO Assessments were made, a slight increase of four per cent on the previous years total.

7.2 Male offenders accounted for 77 per cent of DTTOs and the incidence of DTTOs was highest amongst 26 to 30 year olds (7 per 10,000 population) and 21 to 25 year olds (4 per 10,000 population). Thirty-four per cent of all females and 27 per cent of males receiving DTTOs were aged 25 or under. The proportion of females aged over 40 received DTTOs has increased from one per cent in 2006-07 to six per cent in 2007-08.

Drug Treatment and Testing Orders by Age and Gender of Offender, 2005-06 to 2007-08
Orders per 10,000 population **Chart 7**



7.3 Eighty-nine per cent of DTTOs were imposed on offenders who were unemployed or not seeking employment, a decrease of three percentage points from 92 per cent in 2006-07. One per cent of DTTOs were imposed on offenders who were employed, self employed, in full time education or on a government sponsored training scheme.

Breach Applications of Drug Treatment and Testing Orders

7.4 There were 209 breach applications made to the Courts in 2007-08 in respect of DTTOs, a decrease of 34 per cent from 318 in 2006-07. Males accounted for 73 per cent of these applications. The number of breach applications is not directly comparable with the number of orders previously provided (which covers new orders only) as some breach applications may relate to orders started in the previous year.

7.5 Just over one third of breach applications resulted in the original order being revoked and a custodial sentence imposed, a similar level to the rate of 35 per cent in 2006-07. Two per cent resulted in the order being revoked and a new DTTO imposed whilst a further 14 per cent resulted in the original order being revoked and some other action taken. In one per cent of applications, the DTTO was continued and varied and in a further one per cent it was continued with a monetary penalty. A further 15 per cent resulted in the original order being continued and no further action taken by the court, an increase of one per cent since 2006-07. The outcome was not yet known in 14 per cent of applications.

Terminations of DTTOs

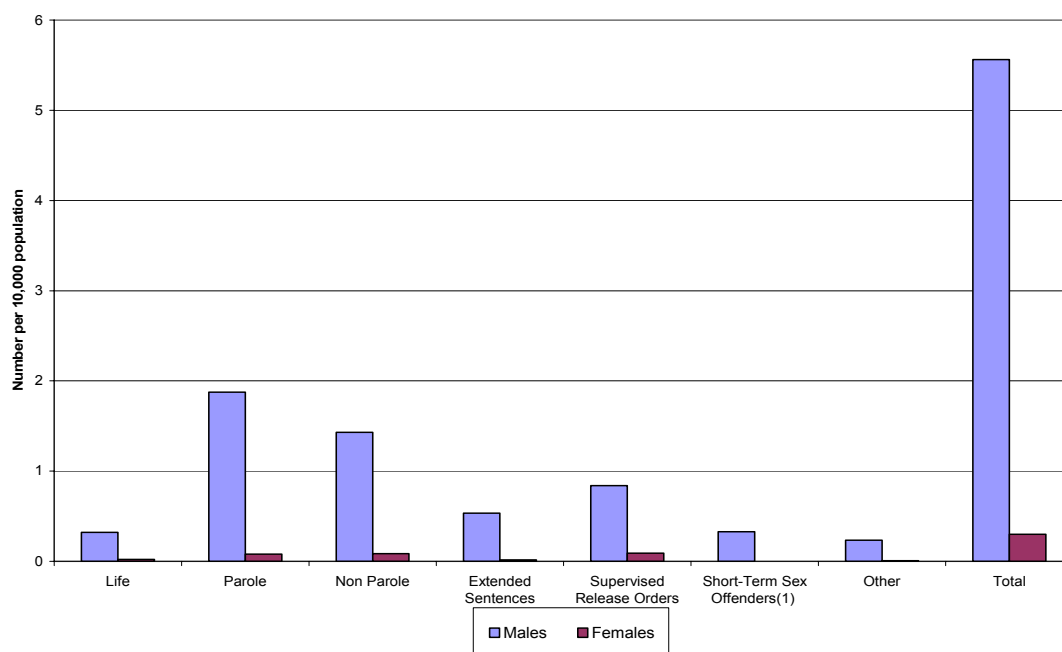
7.6 A total of 491 DTTOs were terminated in 2007-08, a decrease of 11 per cent on the 550 terminations in 2006-07. Thirty-seven per cent were successfully completed, 14 per cent were revoked following a review and thirty-five per cent of orders were terminated following a breach application (down from 38 per cent in 2006-07). The remainder were terminated for other reasons (including transfer out of the area and death).

8. Statutory Throughcare, Voluntary Assistance and the Throughcare Addiction Service (Charts 8 and 9, Tables 8.1 to 8.7)

8.1 A total of 5,292 individuals were subject to statutory Throughcare (in the community and in custody) as at 31st March 2008, an increase of 4 per cent from the 5,081 such individuals the previous year. Of these individuals, forty-four per cent were being supervised in the community. Of the 5,292 individuals, 97 per cent were male.

8.2 1,056 Statutory Throughcare (TC) cases commenced in the community in 2007-08. This represents a decrease of 16 per cent from the 1,256 cases which commenced in 2006-07. Almost all cases commenced were for males (95 per cent). Thirty-three per cent were for Parole licences, 26 per cent for Non Parole licences, 16 per cent for Supervised Release Orders, nine per cent for Extended Sentences, six per cent for Life licences, six per cent for short-term sex offenders and four per cent for other forms of supervision in the community.

Throughcare Cases Commenced in the Community by Type and Gender, 2007-08 Number per 10,000 population Chart 8

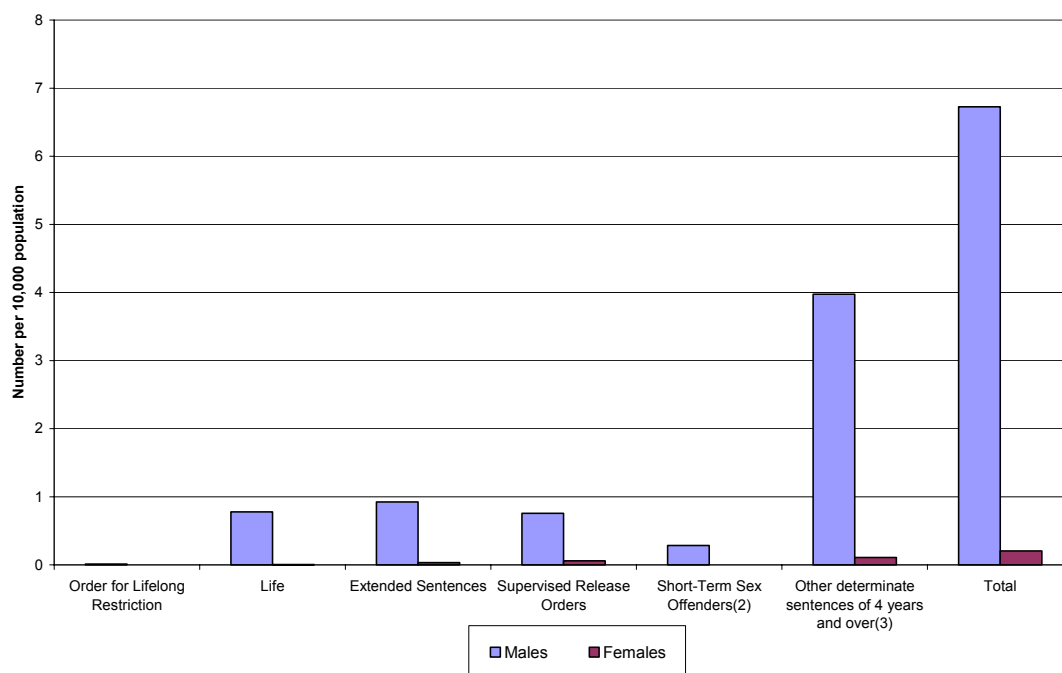


1. Section 15 of the Management of Offenders Etc. (Scot) Act 2005.

8.3 In 2007-08, 879 Throughcare (in the community) cases were completed, a decrease of 8 per cent from 954 in 2006-07. Thirty-two per cent related to Parole licences, 27 per cent to Non-parole licences and 17 per cent to Supervised Release Orders. The remaining 24 per cent related to Extended Sentences, Life licences and other forms of community supervision.

8.4 Criminal Justice Social Work is expected to provide a throughcare service to all prisoners who are subject to statutory supervision post release. This service begins at the start of a prisoner's sentence and is managed via the Scottish Prison Service's Integrated Case Management process. 2005-06 was the first year in which information on Throughcare cases commenced in custody has been collected. Previously the collection focused only on the number of individuals in custody as at 31st March. In 2007-08, 1,247 Throughcare (in custody) cases commenced. Again, the majority were for males (97 per cent). Fourteen per cent were for Extended Sentences, 11 per cent were for Life licences, 12 per cent for Supervised Release Orders, 4 per cent for short term sex offenders and 59 per cent for other determinate sentences of four years and over.

Throughcare Cases Commenced in Custody by Type and Gender, 2006-07
Number per 10,000 population **Chart 9**



1. Section 15 of the Management of Offenders Etc. (Scot) Act 2005.

8.5 Information on Voluntary Assistance (VA) was collected for the first time in 2004-05 and, from 2005-06 onwards includes data on the new Throughcare Addiction Service (see paragraph 9.7 below). There were a total of 2,175 individuals receiving voluntary assistance in 2007-08. This represents a decrease of 3 per cent compared to the 2,234 individuals receiving assistance in 2006-07.

8.6 In 2007-08, a total of 2,603 voluntary assistance cases commenced, a decrease of two per cent on the previous year.

8.7 The new Throughcare Addiction Service (TAS) commenced on 1 August 2005 and forms part of the voluntary aftercare service. Further information is available in the Annex at paragraph 13.19. Of the voluntary assistance cases commenced, 1,424 related to the Throughcare Addiction Service (TAS). These 1,424 cases related to 1,079 individuals who received TAS in 2007-08. This was a decrease of 7 individuals on the 2006-07 figure of 1,086 individuals.

9. Home Circumstance Reports (Table 9.1)

9.1 A total of 1,386 HCRs excluding home leave reports were recorded in 2007-08, an increase of three per cent compared to the 2006-07 figure of 1,342. In addition, 1,315 home leave reports were recorded in 2007-08, an increase of 33 per cent on the 2006-07 figure of 989. The majority (95 per cent) of all HCRs were for males.

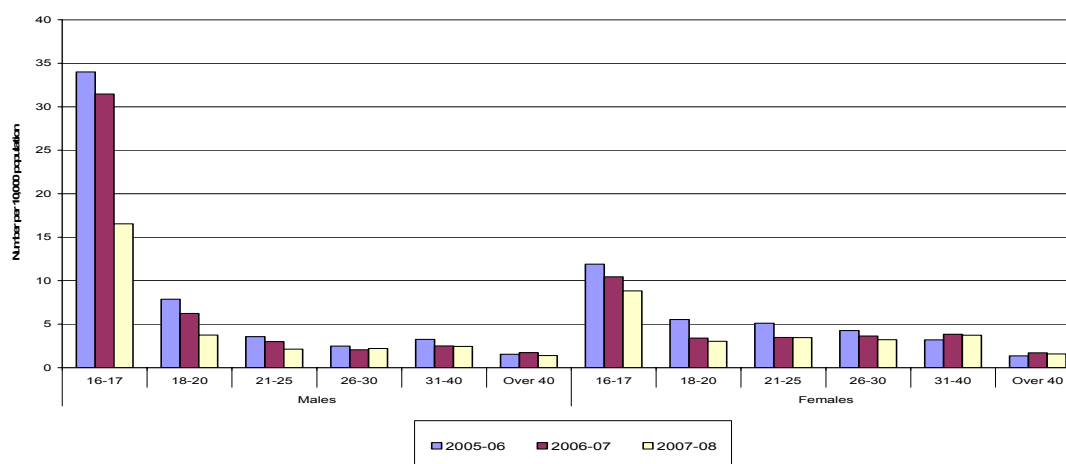
10. Diversion from Prosecution (Chart 10, Table 1.1 to 1.4 and Table 10.1)

10.1 A total of 956 Diversion from Prosecution (DP) cases commenced in 2007-08, a decrease of 16 per cent from the 2006-07 total of 1,133. These 956 cases relate to 939 individuals. Other DP totals for 2007-08 included 1,258 referrals (a 23 per cent decrease on 2006-07), 1,104 assessments (17 per cent decrease), 818 cases successfully completed (one per cent increase) and 51 (19 per cent decrease) cases referred to drug treatment/education.

10.2 Forty-seven per cent of DP cases commenced in 2007-08 involved males. Females receiving Diversion from Prosecution tended to be older than males, with 33 per cent aged over 40 compared with 30 per cent for males. Conversely, 34 per cent of cases for males and 18 per cent for females involved persons aged under 21 years.

10.3 Fifty-three per cent of DP cases commenced in 2007-08 related to offenders who were unemployed or not seeking employment.

Diversion from Prosecution by Age and Gender of Offender, 2005-06 to 2007-08
Cases per 10,000 population Chart 10



1. Includes a small number of Orders relating to offenders aged under 16 years.

11. Bail Information and Court Services (Tables 11.1 and 11.2)

11.1 During 2007-08, the Courts made 7,957 requests for bail information to local authorities, down 11 per cent from 8,905 in 2006-07, to a similar level to 2005-06 (8,052 requests). A total of 729 bail supervision cases commenced in 2007-08, relating to a total of 657 individuals. This reflects decreases of seven per cent and four per cent respectively on the 2006-07 figures of 782 cases and 687 individuals.

11.2 A total of 2,309 stand down reports were provided to the Courts in 2007-08. This represents a decrease of 16 per cent on the 2,741 provided in 2006-07.

11.3 13,770 post sentence interviews were carried out in 2007-08, a decrease of 8 per cent from 14,985 in 2006-07. Seventy-eight per cent of the post sentence interviews carried out were for males.

12. Appendix of Tables

		Page
1.	Summary Tables	
	Table 1.1: Summary of Reports, Orders, Individuals and Cases 2003-04 to 2007-08	21
	Table 1.2: Reports and Orders by Age and Gender, 2005-06 to 2007-08	22
	Table 1.3: Reports and Orders by Employment Status, 2005-06 to 2007-08	23
	Table 1.4: Reports and Orders by Ethnic Group, 2005-06 to 2007-08	23
2.	Social Enquiry Reports	
	Table 2.1: Social Enquiry Reports by Type of Court, 2003-04 to 2007-08	24
	Table 2.2: Social Enquiry Reports by Preferred Option and Gender, 2007-08	24
	Table 2.3: Social Enquiry Reports by Main Outcome and Gender, 2007-08	25
	Table 2.4: Social Enquiry Reports by Preferred Option and Main Outcome, 2007-08	26
3.	Community Service Orders¹	
	Table 3.1: Breach Applications of Community Service Orders by Outcome and Gender, 2007-08	26
	Table 3.2: Terminations of Community Service Orders by Reason and Gender, 2007-08	27
4.	Probation Orders	
	Table 4.1: Probation Orders by Type of Conditions and Gender, 2007-08	27
	Table 4.2: Breach Applications of Probation Orders by Outcome, Cause and Gender, 2007-08	28
	Table 4.3: Terminations of Probation Orders by Outcome and Gender of Offender, 2007-08	28
5.	Probation Orders with a Requirement of Unpaid Work	
	Table 5.1: POs with a Requirement of Unpaid Work by Age and Gender of Offender, 2005-06 to 2007-08	29
	Table 5.2: POs with a Requirement of Unpaid Work by Employment Status of Offender, 2007-08	29
	Table 5.3: Breach Applications of POs with a Requirement of Unpaid Work, 2007-08	30
6.	Supervised Attendance Orders	
	Table 6.1: Supervised Attendance Orders by Type of Court and Gender of Offender, 2003-04 to 2007-08	30
	Table 6.2: Breach Applications of Supervised Attendance Orders by Type of Court and Gender, 2003-04 to 2007-08	31
	Table 6.3: Breach Applications of Supervised Attendance Orders by Outcome and Gender, 2005-06 to 2007-08	31

¹ Excluding Probation Orders with a Requirement of Unpaid Work.

	Table 6.4: Terminations of Supervised Attendance Orders by Reason and Gender, 2005-06 to 2007-08	31
7.	Drug Treatment and Testing Orders	
	Table 7.1: Breach Applications of Drug Treatment and Testing Orders, 2005-06 to 2007-08	32
	Table 7.2: Terminations of Drug Treatment and Testing Orders by Reason, 2005-06 to 2007-08	33
8.	Statutory Throughcare, Voluntary Assistance and Throughcare Addition Service	
	Table 8.1: Individuals Subject to Statutory Throughcare as at 31 st March, 2006 to 2008	33
	Table 8.2: Throughcare Cases Commenced (in the Community), 2006-07 to 2007-08	34
	Table 8.3: Throughcare Cases (in the Community) by Gender as at 31 st March 2008	34
	Table 8.4: Throughcare Cases Completed (in the Community), 2006-07 to 2007-08	35
	Table 8.5: Throughcare Cases Commenced (in Custody), 2007-08	35
	Table 8.6: Throughcare Cases (in Custody) by Gender as at 31 st March 2008	36
	Table 8.7: Voluntary Assistance and Throughcare Addiction Service, Cases and Individuals, 2007-08	36
9.	Home Circumstance Reports	
	Table 9.1: Home Circumstance Reports by Gender, 2006-07 to 2007-08	36
10.	Diversion from Prosecution	
	Table 10.1: Diversion from Prosecution by Gender, 2005-06 to 2007-08	36
11.	Bail and Court Services	
	Table 11.1: Bail Information Requests and Bail Information Cases, 2005-06 to 2007-08	37
	Table 11.2: Court Services by Gender, 2006-07 to 2007-08	37

Summary of Reports, Orders, Individuals and Cases, 2003-04 to 2007-08

Table 1.1

	Year					Per cent change 2006-07 to 2007-08
	2003-04	2004-05	2005-06	2006-07	2007-08	
Total Social Enquiry Reports submitted ⁽¹⁾	39,492	40,265	42,043	41,359	42,492	2.7
Number of individuals with SERs submitted	22,801	26,664	27,466	28,349	28,947	2.1
Total Supplementary SERs submitted	3,868	5,964	6,701	5,794	6,099	5.3
Number of SERs requested	45,274	46,834	50,150	50,577	50,086	-1.0
Total Community Service Orders exc POs with requirement of unpaid work	5,173	5,573	5,927	5,937	6,202	4.5
Breach Applications of CSOs ⁽²⁾	1,329	1,498	1,502	1,892	2,161	14.2
Terminations of CSOs	4,261	4,813	5,093	5,432	5,825	7.2
<i>Successful completions</i>	2,762	3,076	3,267	3,569	3,762	5.4
<i>Other terminations</i>	1,499	1,737	1,826	1,863	2,063	10.7
Total Probation Orders inc POs with requirement of unpaid work	7,742	8,465	8,402	8,404	8,751	4.1
Probation with Unpaid Work	2,255	2,757	2,692	2,499	3,053	22.2
Number of individuals with POs with Unpaid Work	2,124	2,617	2,570	2,393	2,887	20.6
Breach Applications of POs ⁽³⁾	2,665	2,769	3,375	3,650	3,400	-6.8
Breach Applications of POs with Unpaid Work	824	925	1,110	1,157	1,214	4.9
Terminations of POs	4,889	4,973	6,328	6,755	6,849	1.4
<i>Successful completions</i>	2,887	3,055	3,747	4,065	3,998	-1.6
<i>Other terminations</i>	2,002	1,918	2,581	2,690	2,851	6.0
Total Supervised Attendance Orders	3,021	3,360	3,849	3,047	4,438	45.7
Number of individuals with SAOs	2,700	2,965	3,466	2,745	3,768	37.3
Breach Applications of SAOs	1,012	1,203	1,462	1,125	1,311	16.5
Terminations of SAOs ⁽⁴⁾	2,259	2,385	2,912	2,724	2,970	9.0
<i>Successful completions</i>	1,595	1,448	1,710	1,661	1,685	1.4
<i>Other terminations</i>	664	937	1,202	1,063	1,285	20.9
Total Drug Treatment and Testing Orders	412	526	599	696	601	-13.6
Number of individuals with DTTOs	404	470	521	613	543	-11.4
DTTO Assessments	1,013	1,204	1,311	1,485	1,547	4.2
Number of individuals with DTTO Assessments	877	832	1,036	1,153	1,133	-1.7
Breach Applications of DTTOs	134	203	233	318	209	-34.3
Terminations of DTTOs	205	315	465	550	491	-10.7
<i>Successful completions</i>	74	120	186	210	183	-12.9
<i>Other terminations</i>	131	195	279	340	308	-9.4
Statutory Throughcare						
Throughcare Cases (in the community) Commenced ^(5,6)	2,348	1,373	1,105	1,256	1,056	-15.9
Throughcare Cases (in the community) Completed	n/a	539	697	954	879	-7.9
Throughcare Cases (in custody) Commenced ⁽⁶⁾	n/a	n/a	1,082	1,228	1,247	1.5
Number of Individuals subject to Statutory Throughcare as at end of financial year	2,026	3,458	4,901	5,081	5,292	4.2
Voluntary Assistance						
Number of Voluntary Assistance Cases Commenced	n/a	n/a	1,622	2,655	2,603	-2.0
Number of individuals receiving voluntary assistance (community and custody)	n/a	796	1,523	2,234	2,175	-2.6
Number of TAS Cases Commenced	n/a	n/a	427	1,530	1,424	-6.9
Home Circumstance Reports						
Number of HCRs excluding home leave reports ⁽⁷⁾	1,235	1,339	1,361	1,342	1,386	3.3
Number of HCRs including home leave reports	n/a	1,958	2,126	2,331	2,701	15.9
Diversion from Prosecution:						
Cases commenced	1,340	1,064	1,198	1,133	956	-15.6
Number of individuals with cases commenced	1,909	1,047	1,135	1,089	939	-13.8
Cases completed	1,032	760	768	809	818	1.1
Bail Supervision cases commenced	856	798	917	782	729	-6.8
Number of individuals ⁽⁸⁾	770	757	774	687	657	-4.4

1. Reports submitted to the Courts, including supplementary reports (see Annex, paragraph 13.6).

2. Excluding Probation Orders with a requirement of unpaid work.

3. Including Probation Orders with a requirement of unpaid work.

4. Figure for 2006-07 has been corrected since previous publication.

5. Some local authorities are known to have included voluntary assistance cases and serving prisoners in this figure in 2003-04.

Comparisons with other years should therefore be treated with caution.

6. Figure for 2006-07 has been revised since last publication to include revised data from Glasgow City Council.

7. Figure for 2006-07 has been revised since last publication. All HCRs in Highland in 2007-08 were included under reports for parole/non-parole as a breakdown was not available.

8. Figure for 2004-05 has been revised since previous publication.

Reports and Orders by Employment Status, 2005-06 to 2007-08
Number and Per cent of Reports/Orders

Table 1.3

Employment Status	2005-06						2006-07						2007-08						Number
	SERs ⁽¹⁾	CSOs ⁽²⁾	POs ⁽³⁾	SAOs	DTTOs	DPs	SERs ⁽¹⁾	CSOs ⁽²⁾	POs ⁽³⁾	SAOs	DTTOs	DPs	SERs ⁽¹⁾	CSOs ⁽²⁾	POs ⁽³⁾	SAOs ⁽⁴⁾	DTTOs ⁽⁵⁾	DPs ⁽⁵⁾	
Full Time Education Employed/Self Employed	625	108	125	30	1	105	644	136	129	29	2	44	833	133	155	40	1	65	
Unemployed Government Sponsored Training Scheme	7,432	1,842	1,255	475	6	188	8,049	1,888	1,384	369	19	252	8,705	2,167	1,700	529	6	210	
Not Seeking Employment	19,565	2,753	4,650	2,769	331	436	19,935	2,764	4,603	2,224	499	384	19,569	2,735	5,014	2,506	486	401	
Other ⁽⁶⁾	451	55	81	17	-	16	350	88	73	20	1	79	354	65	93	24	-	21	
Total	35,342	5,927	8,402	3,849	599	1,198	35,565	5,937	8,404	3,047	696	1,133	36,393	6,202	8,751	4,438	601	928	
	<i>Per cent</i>																		
Full Time Education Employed/Self Employed	1.8	1.8	1.5	0.8	0.2	8.8	1.8	2.3	1.5	1.0	0.3	3.9	2.3	2.1	1.8	0.9	0.2	7.0	
Unemployed Government Sponsored Training Scheme	21.0	31.1	14.9	12.3	1.0	15.7	22.6	31.8	16.5	12.1	2.7	22.2	23.9	34.9	19.4	12.3	1.0	22.6	
Not Seeking Employment	55.4	46.4	55.3	71.9	55.3	36.4	56.1	46.6	54.8	73.0	71.7	33.9	53.8	44.1	57.3	58.0	80.9	43.2	
Other ⁽⁶⁾	1.3	0.9	1.0	0.4	-	1.3	1.0	1.5	0.9	0.7	*	7.0	1.0	1.0	1.1	0.6	-	2.3	
Total	100.0	100.0	100.0	100.0	100.0	100.0	100.0	100.0	100.0	100.0	100.0	100.0	100.0	100.0	100.0	100.0	100.0	100.0	

1. Reports submitted to Courts, excluding Supplementary Reports.
2. Excludes POs with a Requirement of Unpaid Work.
3. Includes POs with a Requirement of Unpaid Work.
4. Includes 120 orders for Edinburgh city Council where employment breakdown not available (due to transition to new IT system).
5. The majority of cases in Highland counted under 'Other' in 2007-08 due to non-recording.
6. Other includes employment status not known, retired, part time education, custody, supported by parents, caring for relatives, permanently sick, not eligible for benefits.

Reports and Orders by Ethnic Group, 2005-06 to 2007-08
Number and Per cent of Reports/Orders

Table 1.4

Ethnic Group	2005-06 ⁽⁴⁾						2006-07 ⁽⁵⁾						2007-08						Number
	SERs ⁽¹⁾	CSOs ⁽²⁾	POs ⁽³⁾	SAOs	DTTOs	DPs	SERs ⁽¹⁾	CSOs ⁽²⁾	POs ⁽³⁾	SAOs	DTTOs	DPs	SERs ⁽¹⁾	CSOs ⁽²⁾	POs ⁽³⁾	SAOs	DTTOs	DPs	
White	27,610	4,669	6,754	3,423	404	759	28,361	4,652	7,042	2,688	587	947	30,200	5,006	7,313	3,678	449	779	
Asian	242	55	56	13	-	10	286	45	59	17	-	12	349	87	63	15	-	7	
Black	86	16	27	11	-	3	143	28	28	6	2	-	160	24	28	8	1	7	
Mixed	84	15	21	3	4	1	111	12	22	2	6	-	95	15	21	8	-	-	
Other ⁽⁶⁾	566	55	48	8	-	6	259	38	40	9	1	19	883	155	216	55	17	21	
Not Known	2,791	576	821	312	84	168	5,341	571	870	233	88	139	3,394	589	733	453	108	83	
Information not provided ⁽⁷⁾	3,963	541	675	79	107	251	1,064	591	343	92	12	16	1,312	326	377	221	26	31	
Total	35,342	5,927	8,402	3,849	599	1,198	35,565	5,937	8,404	3,047	696	1,133	36,393	6,202	8,751	4,438	601	928	
	<i>Per cent</i>																		
White	78.1	79.8	80.4	88.9	67.4	63.4	79.7	78.4	83.8	88.2	84.3	83.6	83.0	80.7	83.6	82.9	74.7	83.9	
Asian	0.7	0.8	0.7	0.3	-	0.8	0.8	0.8	0.7	0.6	-	1.1	1.0	1.4	0.7	0.3	-	0.8	
Black	0.2	0.3	0.3	0.3	-	0.3	0.4	0.5	0.3	0.2	0.3	-	0.4	0.4	0.3	0.2	0.2	0.8	
Mixed	0.2	0.3	0.2	0.1	0.7	0.1	0.3	0.2	0.3	0.1	0.9	-	0.3	0.2	0.2	0.2	-	-	
Other ⁽⁶⁾	1.6	0.8	0.6	0.2	-	0.5	0.7	0.6	0.5	0.3	0.1	1.7	2.4	2.5	2.5	1.2	2.8	2.3	
Not Known	7.9	8.9	9.8	8.1	14.0	14.0	15.0	9.6	10.4	7.6	12.6	12.3	9.3	9.5	8.4	10.2	18.0	8.9	
Information not provided ⁽⁷⁾	11.2	9.0	8.0	2.1	17.9	21.0	3.0	10.0	4.1	3.0	1.7	1.4	3.6	5.3	4.3	5.0	4.3	3.3	
Total	100.0	100.0	100.0	100.0	100.0	100.0	100.0	100.0	100.0	100.0	100.0	100.0	100.0	100.0	100.0	100.0	100.0	100.0	

1. Reports submitted to Courts, excluding Supplementary Reports.
2. Excludes POs with a Requirement of Unpaid Work.
3. Includes POs with a Requirement of Unpaid Work.
4. In 2005-06, all Dumfries & Galloway ethnicity information is recorded under 'information not provided' as their collection system for ethnicity had not yet been implemented. Similarly information on ethnicity for DTTOs was unavailable in Edinburgh - all cases recorded under 'information not provided'.
5. Figures for 2006-07 include some estimated data for Argyll and Bute, East Dunbartonshire and West Dunbartonshire.
6. 'Other' total will be an overcount in 2007-08 as it includes some clients who have declared nationality but not ethnic background in Fife.
7. 2005-06 SER information includes a small amount of estimated data for Glasgow.

Social Enquiry Reports⁽¹⁾ by Type of Court, 2003-04 to 2007-08
Number, Per cent and Reports per 10,000 population

Table 2.1

Type of Court	Reports Requested					Reports Submitted				
	2003-04	2004-05	2005-06 ⁽²⁾	2006-07 ⁽³⁾	2007-08 ^(4,5)	2003-04	2004-05	2005-06 ⁽²⁾	2006-07 ⁽³⁾	2007-08 ^(5,6)
	Number									
Courts within Scotland										
High/Appeal	1,380	901	814	1,065	759	1,208	808	758	788	697
Sheriff Solemn	2,465	4,194	2,965	3,622	4,041	2,196	3,715	2,644	2,960	3,613
Sheriff Summary	38,729	39,500	44,071	43,891	43,193	33,690	33,951	36,872	36,114	36,569
Stipendiary	1,407	889	636	598	627	1,256	676	458	390	434
District	1,079	1,129	1,415	1,158	871	957	922	1,131	891	675
Total within Scotland	45,060	46,613	49,901	50,334	49,821	39,307	40,072	41,863	41,143	42,268
Outwith Scotland	214	221	249	243	265	185	193	180	216	224
Total SERs	45,274	46,834	50,150	50,577	50,086	39,492	40,265	42,043	41,359	42,492
Total SERs per 10,000 population	126.4	129.9	138.4	138.7	136.4	110.3	111.7	116.0	113.4	115.7
Total Supplementary SERs submitted						3,868	5,964	6,701	5,794	6,099
Number of SERs (excluding Supplementary SERs)						35,624	34,301	35,342	35,565	36,393
	Per cent									
Courts within Scotland										
High/Appeal	3.0	1.9	1.6	2.1	1.5	3.1	2.0	1.8	1.9	1.6
Sheriff Solemn	5.4	9.0	5.9	7.2	8.1	5.6	9.2	6.3	7.2	8.5
Sheriff Summary	85.5	84.3	87.9	86.8	86.2	85.3	84.3	87.7	87.3	86.1
Stipendiary	3.1	1.9	1.3	1.2	1.3	3.2	1.7	1.1	0.9	1.0
District	2.4	2.4	2.8	2.3	1.7	2.4	2.3	2.7	2.2	1.6
Total within Scotland	99.5	99.5	99.5	99.5	99.5	99.5	99.5	99.6	99.5	99.5
Outwith Scotland	0.5	0.5	0.5	0.5	0.5	0.5	0.5	0.4	0.5	0.5
Total SERs⁽⁵⁾	100.0	100.0	100.0	100.0	100.0	100.0	100.0	100.0	100.0	100.0

1. Includes Supplementary Reports (see Annex, paragraph 13.6).
2. 2005-06 figures include estimated data for West Dunbartonshire (who were unable to provide this breakdown) and a small amount of estimated data for missing information in Glasgow City.
3. Figures for 2006-07 include some estimated data for Argyll and Bute, East Dunbartonshire and West Dunbartonshire.
4. Total reports requested within Scotland include an additional 330 reports for the Domestic Abuse Court in Glasgow. Total reports submitted within Scotland include an additional 280 reports for the Domestic Abuse Court in Glasgow.
5. All Sheriff Court SERs in Stirling have been counted under Sheriff Summary.
6. Total will not sum to 100% in 2007-08 as total includes reports for the Domestic Abuse Court in Glasgow.

Social Enquiry Reports⁽¹⁾ by Preferred Option, 2005-06 to 2007-08
Number and Per cent of Reports

Table 2.2

Preferred Option	2005-06 ⁽⁴⁾			2006-07 ⁽⁵⁾			2007-08		
	Male	Female	Total	Male	Female	Total	Male	Female	Total
	Number								
Custody with extended sentence	90	-	90	106	1	107	106	5	111
Custody with SRO	71	5	76	91	1	92	111	4	115
Custody	597	48	645	741	65	806	842	65	907
Community Service	4,563	478	5,041	4,397	463	4,860	4,723	582	5,305
Restriction of liberty order	498	29	527	458	58	516	579	72	651
Deferment for DTTO assessment ⁽²⁾	422	95	517	594	155	749	621	170	791
Probation with a condition of unpaid work	1,046	102	1,148	929	110	1,039	1,308	190	1,498
Probation with additional conditions	2,758	370	3,128	2,476	362	2,838	2,813	446	3,259
Probation with standard conditions	3,109	672	3,781	3,026	592	3,618	3,176	670	3,846
Monetary Penalty	2,955	458	3,413	2,793	486	3,279	2,857	458	3,315
Deferred (3 months or more)	4,715	1,258	5,973	4,515	1,211	5,726	4,478	1,312	5,790
No preferred option	5,395	887	6,282	5,984	988	6,972	5,310	881	6,191
Other ⁽³⁾	3,813	908	4,721	4,083	880	4,963	3,875	739	4,614
Total	30,032	5,310	35,342	30,193	5,372	35,565	30,799	5,594	36,393
	Per cent								
Custody with extended sentence	0.3	-	0.3	0.4	*	0.3	0.3	0.1	0.3
Custody with SRO	0.2	0.1	0.2	0.3	*	0.3	0.4	0.1	0.3
Custody	2.0	0.9	1.8	2.5	1.2	2.3	2.7	1.2	2.5
Community Service	15.2	9.0	14.3	14.6	8.6	13.7	15.3	10.4	14.6
Restriction of liberty order	1.7	0.5	1.5	1.5	1.1	1.5	1.9	1.3	1.8
Deferment for DTTO assessment ⁽²⁾	1.4	1.8	1.5	2.0	2.9	2.1	2.0	3.0	2.2
Probation with a condition of unpaid work	3.5	1.9	3.2	3.1	2.0	2.9	4.2	3.4	4.1
Probation with additional conditions	9.2	7.0	8.9	8.2	6.7	8.0	9.1	8.0	9.0
Probation with standard conditions	10.4	12.7	10.7	10.0	11.0	10.2	10.3	12.0	10.6
Monetary Penalty	9.8	8.6	9.7	9.3	9.0	9.2	9.3	8.2	9.1
Deferred (3 months or more)	15.7	23.7	16.9	15.0	22.5	16.1	14.5	23.5	15.9
No preferred option	18.0	16.7	17.8	19.8	18.4	19.6	17.2	15.7	17.0
Other ⁽³⁾	12.7	17.1	13.4	13.5	16.4	14.0	12.6	13.2	12.7
Total	100.0	100.0	100.0	100.0	100.0	100.0	100.0	100.0	100.0

1. Reports submitted to the Courts, excluding Supplementary Reports.
2. Prior to 2005-06, this category was simply entitled 'Drug Treatment and Testing Order'. Care should be taken when comparing this option over time.
3. 'Other' includes structured deferred sentences; absolute discharge; admonition; referral to children's hearing; remand to secure unit; SAO; driving ban; compensation order; continue current order; psychiatric/psychological assessment; revoke and impose new order; SRO; suspended sentence; no suitable disposal; outcome not yet known and non-specific community disposals.
4. Figures for 2005-06 include a small amount of estimated data for missing information in Glasgow City and West Dunbartonshire.
5. Figures for 2006-07 include some estimated data for Argyll and Bute, East Dunbartonshire and West Dunbartonshire.

Social Enquiry Reports⁽¹⁾ by Main Outcome, 2005-06 to 2007-08
Number and Per cent of Reports

Table 2.3

Main Outcome	2005-06 ⁽⁵⁾			2006-07 ⁽⁶⁾			2007-08		
	Male	Female	Total	Male	Female	Total	Male	Female	Total
									Number
Custody with extended sentence	95	1	96	114	2	116	145	9	154
Custody with SRO	105	13	118	133	14	147	160	13	173
Custody	4,822	400	5,222	5,425	463	5,888	5,115	447	5,562
Community Service	3,966	485	4,451	4,107	449	4,556	4,459	570	5,029
Restriction of liberty order	390	48	438	442	37	479	434	46	480
Deferment for DTTO assessment ^(2,3)	195	59	254	297	77	374	295	84	379
Probation with a condition of unpaid work	1,740	232	1,972	1,696	240	1,936	2,180	312	2,492
Probation with additional conditions	1,672	268	1,940	1,220	314	1,534	1,321	319	1,640
Probation with standard conditions	1,840	601	2,441	1,947	604	2,551	2,125	626	2,751
Monetary Penalty	3,206	441	3,647	3,315	485	3,800	3,329	462	3,791
Deferred (3 months or more)	3,408	876	4,284	3,088	772	3,860	2,808	797	3,605
Warrant for apprehension / recall	1,234	270	1,504	1,194	286	1,480	1,171	271	1,442
Admonition ⁽³⁾	697	249	946	720	310	1,030	735	268	1,003
Absolute Discharge ⁽³⁾	17	7	24	13	10	23	10	6	16
Other ⁽⁴⁾	4,058	947	5,005	3,969	812	4,781	4,175	867	5,042
Outcome not yet known	2,587	413	3,000	2,513	497	3,010	2,337	497	2,834
Total	30,032	5,310	35,342	30,193	5,372	35,565	30,799	5,594	36,393
									Per cent
Custody with extended sentence	0.3	*	0.3	0.4	*	0.3	0.5	0.2	0.4
Custody with SRO	0.3	0.2	0.3	0.4	0.3	0.4	0.5	0.2	0.5
Custody	16.1	7.5	14.8	18.0	8.6	16.6	16.6	8.0	15.3
Community Service	13.2	9.1	12.6	13.6	8.4	12.8	14.5	10.2	13.8
Restriction of liberty order	1.3	0.9	1.2	1.5	0.7	1.3	1.4	0.8	1.3
Deferment for DTTO assessment ^(2,3)	0.6	1.1	0.7	1.0	1.4	1.1	1.0	1.5	1.0
Probation with a condition of unpaid work	5.8	4.4	5.6	5.6	4.5	5.4	7.1	5.6	6.8
Probation with additional conditions	5.6	5.0	5.5	4.0	5.8	4.3	4.3	5.7	4.5
Probation with standard conditions	6.1	11.3	6.9	6.4	11.2	7.2	6.9	11.2	7.6
Monetary Penalty	10.7	8.3	10.3	11.0	9.0	10.7	10.8	8.3	10.4
Deferred (3 months or more)	11.3	16.5	12.1	10.2	14.4	10.9	9.1	14.2	9.9
Warrant for apprehension / recall	4.1	5.1	4.3	4.0	5.3	4.2	3.8	4.8	4.0
Admonition ⁽³⁾	2.3	4.7	2.7	2.4	5.8	2.9	2.4	4.8	2.8
Absolute Discharge ⁽³⁾	0.1	0.1	0.1	*	0.2	0.1	*	0.1	*
Other ⁽⁴⁾	13.5	17.8	14.2	13.1	15.1	13.4	13.6	15.5	13.9
Outcome not yet known	8.6	7.8	8.5	8.3	9.3	8.5	7.6	8.9	7.8
Total	100.0	100.0	100.0	100.0	100.0	100.0	100.0	100.0	100.0

1. Reports submitted to the Courts, excluding Supplementary Reports.
2. Prior to 2005-06, this category was simply entitled 'Drug Treatment and Testing Order'. Care should be taken when comparing this option over time.
3. New categories for 2005-06, these would previously have been grouped under 'other'.
4. 'Other' includes compensation order, deferred sentences, referral to children's hearing, psychiatric assessment, SAO, continue order, driving disqualification, license endorsed and not known.
5. Figures for 2005-06 include a small amount of estimated data for missing information in Glasgow City and West Dunbartonshire.
6. Figures for 2006-07 include some estimated data for Argyll and Bute, East Dunbartonshire and West Dunbartonshire.

Social Enquiry Reports^(1,2) by Preferred Option and Main Outcome, 2007-08

Per cent of Reports

Table 2.4

Preferred Option	Main Outcome							Total	Total preferred options
	Custodial Sentence	Community Service	RLO	Deferment for DTTO assessment	Probation	Monetary Penalty	Other/Not known		
Males									
Custodial Sentence	77.5	2.4	0.2	-	3.9	1.0	15.0	100.0	613
Community Service	12.8	43.0	1.1	0.1	7.3	10.4	25.3	100.0	3,599
RLO	23.7	7.8	28.2	1.2	8.9	7.4	22.7	100.0	485
Deferment for DTTO assessment	21.6	1.6	0.7	35.3	3.9	1.2	35.7	100.0	566
Probation	19.7	7.0	1.5	0.2	44.2	4.4	23.1	100.0	5,773
Monetary Penalty	6.2	18.8	1.1	0.1	5.2	40.4	28.3	100.0	2,582
No preferred option	25.2	10.3	1.0	0.3	12.9	7.5	42.9	100.0	5,308
Other/not known ⁽²⁾	12.4	8.6	0.8	0.9	10.2	11.8	55.4	100.0	6,686
Total	18.1	14.1	1.6	1.2	17.2	11.3	36.5	100.0	25,612
Females									
Custodial Sentence	75.0	-	-	-	6.3	4.2	14.6	100.0	48
Community Service	8.1	43.7	1.3	-	9.9	8.8	28.1	100.0	455
RLO	16.4	10.4	22.4	-	16.4	4.5	29.9	100.0	67
Deferment for DTTO assessment	9.8	-	-	41.7	8.6	0.6	39.3	100.0	163
Probation	11.4	5.0	0.5	0.1	51.4	3.8	27.8	100.0	1,111
Monetary Penalty	3.3	13.1	1.0	0.3	7.9	40.3	34.1	100.0	390
No preferred option	13.3	5.8	0.9	0.6	17.3	6.1	56.1	100.0	881
Other/not known ⁽³⁾	4.9	6.0	0.5	0.5	13.9	6.7	67.4	100.0	1,652
Total	9.2	9.7	1.0	1.8	22.2	8.6	47.6	100.0	4,767

1. Reports submitted to the Courts, excluding Supplementary Reports (see Annex, paragraph 15.6).

2. Table excludes Glasgow City Council which was not able to provide the data. The totals in this table are therefore lower than in the other SER tables.

3. 'Other/not known' includes deferred sentence, warrant for apprehension/recall, absolute discharge, admonition, structured deferred sentences; referral to children's hearing; remand to secure unit; SAO; driving ban; compensation order; continue current order; psychiatric / psychological assessment; revoke and impose new order; SRO; suspended sentence; no suitable disposal and non-specific community disposals.

Breach Applications of Community Service Orders^(1,2) by Outcome and Gender, 2005-06 to 2007-08

Number and Per cent of Breach Applications

Table 3.1

Outcome	2005-06			2006-07			2007-08		
	Male	Female	Total	Male	Female	Total	Male	Female	Total
Revoked and Custody	219	16	235	239	14	253	343	17	360
Revoked and Probation	64	13	77	70	8	78	79	12	91
Revoked and Monetary Penalty	42	8	50	57	4	61	70	7	77
Revoked and Other	237	29	266	334	38	372	367	64	431
Time for completion varied	65	12	77	57	6	63	66	6	72
Continued and hours varied	51	3	54	39	2	41	63	6	69
Continued and monetary penalty	36	5	41	55	3	58	88	4	92
Warrant for Apprehension/Recall	50	3	53	53	11	64	47	7	54
Continued and No further Action	133	18	151	179	20	199	200	28	228
Outcome Not Yet Known	373	51	424	575	59	634	491	63	554
Other ⁽³⁾	67	7	74	63	6	69	119	14	133
Total	1,337	165	1,502	1,721	171	1,892	1,933	228	2,161
	<i>Per cent</i>								
Revoked and Custody	16.4	9.7	15.6	13.9	8.2	13.4	17.7	7.5	16.7
Revoked and Probation	4.8	7.9	5.1	4.1	4.7	4.1	4.1	5.3	4.2
Revoked and Monetary Penalty	3.1	4.8	3.3	3.3	2.3	3.2	3.6	3.1	3.6
Revoked and Other	17.7	17.6	17.7	19.4	22.2	19.7	19.0	28.1	19.9
Time for completion varied	4.9	7.3	5.1	3.3	3.5	3.3	3.4	2.6	3.3
Continued and hours varied	3.8	1.8	3.6	2.3	1.2	2.2	3.3	2.6	3.2
Continued and monetary penalty	2.7	3.0	2.7	3.2	1.8	3.1	4.6	1.8	4.3
Warrant for Apprehension/Recall	3.7	1.8	3.5	3.1	6.4	3.4	2.4	3.1	2.5
Continued and No further Action	9.9	10.9	10.1	10.4	11.7	10.5	10.3	12.3	10.6
Outcome Not Yet Known	27.9	30.9	28.2	33.4	34.5	33.5	25.4	27.6	25.6
Other ⁽³⁾	5.0	4.2	4.9	3.7	3.5	3.6	6.2	6.1	6.2
Total	100.0	100.0	100.0	100.0	100.0	100.0	100.0	100.0	100.0

1. Excluding Probation Orders with a Requirement of Unpaid Work.

2. See Annex, paragraph 13.24

3. Other includes continued and new CSO, CSO revoked and discharged, revoked and DTTO imposed, admonished and action not proved.

Terminations of Community Service Orders⁽¹⁾ by Reason and Gender, 2005-06 to 2007-08
Number and Per cent of Terminations

Table 3.2

Reason for termination	2005-06 ⁽²⁾			2006-07			2007-08		
	Male	Female	Total	Male	Female	Total	Male	Female	Total
Order Successfully Completed	2,879	388	3,267	3,157	412	3,569	3,320	442	3,762
Revoked due to Review	258	37	295	293	60	353	219	52	271
Revoked due to Breach	853	107	960	945	91	1,036	1,228	118	1,346
Transfer out of Area	278	30	308	259	26	285	225	19	244
Death	21	-	21	30	-	30	20	3	23
Other ⁽³⁾	216	26	242	144	15	159	151	28	179
Total	4,505	588	5,093	4,828	604	5,432	5,163	662	5,825
									<i>Number</i>
Order Successfully Completed	63.9	66.0	64.1	65.4	68.2	65.7	64.3	66.8	64.6
Revoked due to Review	5.7	6.3	5.8	6.1	9.9	6.5	4.2	7.9	4.7
Revoked due to Breach	18.9	18.2	18.8	19.6	15.1	19.1	23.8	17.8	23.1
Transfer out of Area	6.2	5.1	6.0	5.4	4.3	5.2	4.4	2.9	4.2
Death	0.5	-	0.4	0.6	-	0.6	0.4	0.5	0.4
Other ⁽³⁾	4.8	4.4	4.8	3.0	2.5	2.9	2.9	4.2	3.1
Total	100.0	100.0	100.0	100.0	100.0	100.0	100.0	100.0	100.0
									<i>Per cent</i>

1. Excluding Probation Orders with a Requirement of Unpaid Work.
2. Information for Angus in 2005-06 is thought too low to be realistic. However changes in recording practice mean that no further information is available.
3. 'Other' includes non-compliance, further offence, early discharge, order revoked following appeal, change of placement, serving custodial sentence, on remand and information unknown/missing.

Probation Orders⁽¹⁾ by Type of Conditions and Gender, 2005-06 to 2007-08
Number and Per cent of Orders

Table 4.1

Conditions	2005-06			2006-07 ^(5,6)			2007-08		
	Male	Female	Total	Male	Female	Total	Male	Female	Total
Orders with Standard Conditions only	2,818	853	3,671	2,867	783	3,650	2,940	819	3,759
Orders with Additional Conditions ⁽²⁾	5,077	799	5,876	4,809	883	5,692	5,125	1,107	6,232
Requirement for Unpaid Work	2,283	323	2,606	2,173	326	2,499	2,641	434	3,075
Condition of Compensation	140	19	159	148	33	181	158	25	183
Condition of Residence	27	5	32	25	14	39	36	13	49
Medical/Psychiatric/Psychological Treatment	160	55	215	129	40	169	128	44	172
Alcohol Treatment/Education	874	123	997	835	154	989	566	147	713
Drug Treatment/Education	431	142	573	355	122	477	232	109	341
Domestic Abuse Programme ⁽³⁾	162	-	162	155	1	156	90	1	91
Venture Trust	3	-	3	34	3	37	22	3	25
Licence of attendance on a sex offender programme (accredited or non-accredited) ⁽³⁾	77	2	79	80	-	80	62	1	63
Other Intensive	268	35	303	234	25	259	247	20	267
Electronic Monitoring	80	1	81	92	5	97	100	13	113
Other ⁽⁴⁾	572	94	666	549	160	709	843	297	1,140
Total Conditions⁽²⁾	7,895	1,652	9,547	7,676	1,666	9,342	8,065	1,926	9,991
									<i>Per cent</i>
Orders with Standard Conditions only	35.7	51.6	38.5	37.4	47.0	39.1	36.5	42.5	37.6
Orders with Additional Conditions ⁽²⁾	64.3	48.4	61.5	62.6	53.0	60.9	63.5	57.5	62.4
Requirement for Unpaid Work	28.9	19.6	27.3	28.3	19.6	26.8	32.7	22.5	30.8
Condition of Compensation	1.8	1.2	1.7	1.9	2.0	1.9	2.0	1.3	1.8
Condition of Residence	0.3	0.3	0.3	0.3	0.8	0.4	0.4	0.7	0.5
Medical/Psychiatric/Psychological Treatment	2.0	3.3	2.3	1.7	2.4	1.8	1.6	2.3	1.7
Alcohol Treatment/Education	11.1	7.4	10.4	10.9	9.2	10.6	7.0	7.6	7.1
Drug Treatment/Education	5.5	8.6	6.0	4.6	7.3	5.1	2.9	5.7	3.4
Domestic Abuse Programme ⁽³⁾	2.1	-	1.7	2.0	0.1	1.7	1.1	0.1	0.9
Venture Trust	*	-	*	0.4	0.2	0.4	0.3	0.2	0.3
Licence of attendance on a sex offender programme (accredited or non-accredited) ⁽³⁾	1.0	0.1	0.8	1.0	-	0.9	0.8	-	0.6
Other Intensive	3.4	2.1	3.2	3.0	1.5	2.8	3.1	1.0	2.7
Electronic Monitoring	1.0	0.1	0.8	1.2	0.3	1.0	1.2	0.7	1.1
Other ⁽⁴⁾	7.2	5.7	7.0	7.2	9.6	7.6	10.5	15.4	11.4
Total Conditions⁽²⁾	100.0	100.0	100.0	100.0	100.0	100.0	100.0	100.0	100.0

1. Including Probation Orders with a Requirement of Unpaid Work.
2. An order may have more than one additional condition; each additional condition is counted separately in this table.
3. Information on conditions of domestic abuse programme and licence of attendance on a sex offender programme was collected for the first time in 2005-06.
4. Includes Airbourne, groupwork, disqualification from driving/resit test, sex offenders register, non-harrasment order, restriction on contact ith children, sex offenders counselling, don't approach individuals under 17, no contact with known sex offenders, not to enter parks and schools, don't reside in a household with anyone under 17, anger management, victim awareness, counselling, venture trust, road traffic programmes, drink related programmes, young offender strategy programme, avoid town centre, avoid specific address, avoid specific person, employment counselling, attend court, attend children & families team, attend substance misuse team, other drugs services, liase with includem, DTTO, RLO, Web project, car offender programme, not to enter licenced premises, attend Craigowl, Strathmartine Hospital, Bridge Project, Alloway Centre, Topaz, Choice Young Offender programme, information missing or not known.
5. Figures for 2006-07 include some estimated data for Argyll and Bute, East Dunbartonshire and West Dunbartonshire.
6. Total Probation Orders in Glasgow also include an additional 121 Probation Orders with a Requirement on Unpaid Work and Additional Conditions.

Breach Applications⁽¹⁾ of Probation Orders⁽²⁾ by Outcome and Gender, 2005-06 to 2007-08
Number and Per cent of Breach Applications

Table 4.2

Outcome	2005-06			2006-07 ⁽³⁾			2007-08		
	Male	Female	Total	Male	Female	Total	Male	Female	Total
									Number
Revoked and Custody	424	61	485	425	66	491	503	61	564
Revoked and Community Service	41	16	57	43	6	49	53	13	66
Revoked and Monetary Penalty	40	13	53	36	4	40	30	9	39
Revoked and New Probation Order	266	68	334	288	67	355	340	80	420
Revoked and Other	224	36	260	172	43	215	194	65	259
Warrant for apprehension/recall	193	36	229	177	28	205	103	18	121
Continued and Monetary Penalty	41	4	45	52	12	64	49	6	55
Continued and varied	89	11	100	58	18	76	111	14	125
Continued and CSO made	23	1	24	16	4	20	13	7	20
No action by court	456	94	550	560	96	656	501	93	594
Outcome not yet known	845	211	1,056	1,071	213	1,284	782	169	951
Other ⁽⁴⁾	158	24	182	161	34	195	144	42	186
Total	2,800	575	3,375	3,059	591	3,650	2,823	577	3,400
									Per cent
Revoked and Custody	15.1	10.6	14.4	13.9	11.2	13.5	17.8	10.6	16.6
Revoked and Community Service	1.5	2.8	1.7	1.4	1.0	1.3	1.9	2.3	1.9
Revoked and Monetary Penalty	1.4	2.3	1.6	1.2	0.7	1.1	1.1	1.6	1.1
Revoked and New Probation Order	9.5	11.8	9.9	9.4	11.3	9.7	12.0	13.9	12.4
Revoked and Other	8.0	6.3	7.7	5.6	7.3	5.9	6.9	11.3	7.6
Warrant for apprehension/recall	6.9	6.3	6.8	5.8	4.7	5.6	3.6	3.1	3.6
Continued and Monetary Penalty	1.5	0.7	1.3	1.7	2.0	1.8	1.7	1.0	1.6
Continued and varied	3.2	1.9	3.0	1.9	3.0	2.1	3.9	2.4	3.7
Continued and CSO made	0.8	0.2	0.7	0.5	0.7	0.5	0.5	1.2	0.6
No action by court	16.3	16.3	16.3	18.3	16.2	18.0	17.7	16.1	17.5
Outcome not yet known	30.2	36.7	31.3	35.0	36.0	35.2	27.7	29.3	28.0
Other ⁽⁴⁾	5.6	4.2	5.4	5.3	5.8	5.3	5.1	7.3	5.5
Total	100.0	100.0	100.0	100.0	100.0	100.0	100.0	100.0	100.0

1. See Annex, paragraph 13.24.
2. Including Probation Orders with a Requirement of Unpaid Work.
3. Figures for 2006-07 exclude Clackmannanshire due to failure of IT systems.
4. 'Other' includes discharged, action not proved and PO continued.

Terminations of Probation Orders⁽¹⁾ by Outcome and Gender, 2005-06 to 2007-08
Number and Per cent of Terminations

Table 4.3

Reason for termination	2005-06			2006-07			2007-08		
	Male	Female	Total	Male	Female	Total	Male	Female	Total
									Number
Order Successfully Completed ⁽²⁾	2,967	780	3,747	3,331	734	4,065	3,253	745	3,998
Order Terminated due to breach									
Non compliance	721	155	876	745	195	940	888	210	1,098
Further offence	640	93	733	640	95	735	612	87	699
Non compliance and Further Offence	99	26	125	108	26	134	135	14	149
Transfer out of area	283	52	335	284	41	325	235	58	293
Death	67	15	82	89	17	106	71	15	86
Other ⁽³⁾	359	71	430	365	85	450	435	91	526
Total	5,136	1,192	6,328	5,562	1,193	6,755	5,629	1,220	6,849
									Per cent
Order Successfully Completed ⁽²⁾	57.8	65.4	59.2	59.9	61.5	60.2	57.8	61.1	58.4
Order Terminated due to breach									
Non compliance	14.0	13.0	13.8	13.4	16.3	13.9	15.8	17.2	16.0
Further offence	12.5	7.8	11.6	11.5	8.0	10.9	10.9	7.1	10.2
Non compliance and Further Offence	1.9	2.2	2.0	1.9	2.2	2.0	2.4	1.1	2.2
Transfer out of area	5.5	4.4	5.3	5.1	3.4	4.8	4.2	4.8	4.3
Death	1.3	1.3	1.3	1.6	1.4	1.6	1.3	1.2	1.3
Other ⁽³⁾	7.0	6.0	6.8	6.6	7.1	6.7	7.7	7.5	7.7
Total	100.0	100.0	100.0	100.0	100.0	100.0	100.0	100.0	100.0

1. Including Probation Orders with a Requirement of Unpaid Work.
2. Includes orders terminated by early discharge following review.
3. 'Other' includes order expired in custody, breach (no reason stated), revoked following review and information missing/not known.
4. 'Other' includes order expired in custody, breach (no reason stated), revoked following review and information missing/not known.

Probation Orders with a Requirement of Unpaid Work by Age and Gender, 2005-06 to 2007-08
Number, Per cent and Orders per 10,000 population

Table 5.1

Gender by Age Group	Number of Orders			Per cent of Orders			Orders per 10,000 population ⁽¹⁾		
	2005-06 ⁽²⁾	2006-07 ⁽³⁾	2007-08	2005-06 ⁽²⁾	2006-07 ⁽³⁾	2007-08	2005-06 ⁽²⁾	2006-07 ⁽³⁾	2007-08
All									
16-17	255	315	307	9.5	12.6	10.1	19.6	24.5	23.5
18-20	550	580	721	20.4	23.2	23.6	27.2	28.4	35.5
21-25	587	514	647	21.8	20.6	21.2	17.9	15.2	18.8
26-30	413	378	427	15.3	15.1	14.0	14.1	12.5	13.6
31-40	556	444	587	20.7	17.8	19.2	7.5	6.1	8.3
Over 40	331	268	364	12.3	10.7	11.9	1.7	1.4	1.8
Total	2,692	2,499	3,053	100.0	100.0	100.0	7.4	6.9	8.3
Males									
16-17	229	292	263	9.6	13.4	10.0	34.2	44.2	39.2
18-20	495	522	629	20.8	24.0	24.0	48.1	50.0	60.4
21-25	530	457	567	22.3	21.0	21.6	32.0	26.8	32.7
26-30	352	322	369	14.8	14.8	14.1	24.2	21.3	23.3
31-40	474	356	495	19.9	16.4	18.9	13.3	10.2	14.6
Over 40	297	224	297	12.5	10.3	11.3	3.2	2.4	3.1
Total	2,377	2,173	2,620	100.0	100.0	100.0	13.4	12.2	14.6
Females									
16-17	26	23	44	8.3	7.1	10.2	4.1	3.7	6.9
18-20	55	58	92	17.5	17.8	21.2	5.5	5.8	9.3
21-25	57	57	80	18.1	17.5	18.5	3.5	3.4	4.7
26-30	61	56	58	19.4	17.2	13.4	4.1	3.7	3.7
31-40	82	88	92	26.0	27.0	21.2	2.1	2.4	2.5
Over 40	34	44	67	10.8	13.5	15.5	0.3	0.4	0.7
Total	315	326	433	100.0	100.0	100.0	1.7	1.7	2.3

1. Reports per 10,000 population are based on GROS mid-year population estimates for 16-70 year olds.

2. Figures for 2005-06 include a small amount of estimated data for missing information in Glasgow City.

3. Figures for 2006-07 include some estimated data for Argyll and Bute, East Dunbartonshire and West Dunbartonshire.

Probation Orders with a Requirement of Unpaid Work by Employment Status, 2007-08

Number and Per cent of Reports

Table 5.2

Employment status	Number			Per cent		
	Males	Females	Total	Males	Females	Total
Full Time Education	56	13	69	2.1	3.0	2.3
Employed/Self Employed	714	60	774	27.3	13.9	25.4
Unemployed	1,367	233	1,600	52.2	53.8	52.4
Government sponsored training scheme	45	3	48	1.7	0.7	1.6
Not seeking employment	183	66	249	7.0	15.2	8.2
Other ⁽¹⁾	255	58	313	9.7	13.4	10.3
Total	2,620	433	3,053	100.0	100.0	100.0

1. 'Other' includes retired; part time employment; employment status unknown or information missing.

Breach Applications⁽¹⁾ of Probation Orders with a Requirement of Unpaid Work, 2007-08
Number and Per cent by Outcome and Gender

Table 5.3

Outcome	Breach Applications				Total
	Condition of Unpaid Work breached		Condition of Unpaid Work not breached		
	Males	Females	Males	Females	
Revoked and Custody	77	6	114	5	Number 202
Revoked and Community Service	10	1	11	1	23
Revoked and Monetary Penalty	6	1	6	-	13
Revoked and New Probation Order	63	13	63	11	150
Revoked and Other	27	3	32	13	75
Warrant for apprehension/recall	27	2	13	1	43
Continued and Monetary Penalty	16	3	6	1	26
Continued and varied	27	7	35	1	70
Continued and CSO made	5	-	4	2	11
No action by court	64	5	75	14	158
Outcome not yet known	171	24	140	20	355
Other ⁽²⁾	15	2	65	6	88
Total	508	67	564	75	1,214
					Per cent
Revoked and Custody	15.2	9.0	20.2	6.7	16.6
Revoked and Community Service	2.0	1.5	2.0	1.3	1.9
Revoked and Monetary Penalty	1.2	1.5	1.1	-	1.1
Revoked and New Probation Order	12.4	19.4	11.2	14.7	12.4
Revoked and Other	5.3	4.5	5.7	17.3	6.2
Warrant for apprehension/recall	5.3	3.0	2.3	1.3	3.5
Continued and Monetary Penalty	3.1	4.5	1.1	1.3	2.1
Continued and varied	5.3	10.4	6.2	1.3	5.8
Continued and CSO made	1.0	-	0.7	2.7	0.9
No action by court	12.6	7.5	13.3	18.7	13.0
Outcome not yet known	33.7	35.8	24.8	26.7	29.2
Other ⁽²⁾	3.0	3.0	11.5	8.0	7.2
Total	100.0	100.0	100.0	100.0	100.0

1. See Annex, paragraph 13.24.

2. Other includes discharged and PO continued.

Supervised Attendance Orders by Type of Court and Gender, 2003-04 to 2007-08
Number and Per cent of Orders

Table 6.1

Type of Court	Number of Orders					Per cent of Orders				
	2003-04	2004-05	2005-06	2006-07 ⁽¹⁾	2007-08 ⁽²⁾	2003-04	2004-05	2005-06	2006-07 ⁽¹⁾	2007-08 ⁽³⁾
Total										
Sheriff	2,237	2,325	1,986	1,397	2,009	74.0	69.2	51.6	45.8	45.3
Stipendiary Magistrate	3	256	410	439	951	0.1	7.6	10.7	14.4	21.4
District	781	779	1,453	1,211	1,469	25.9	23.2	37.8	39.7	33.1
Total	3,021	3,360	3,849	3,047	4,438	100.0	100.0	100.0	100.0	100.0
Males										
Sheriff	1,874	1,957	1,682	1,157	1,667	74.7	70.6	52.0	46.2	45.1
Stipendiary Magistrate	3	206	355	372	805	0.1	7.4	11.0	14.9	21.8
District	633	609	1,196	976	1,214	25.2	22.0	37.0	39.0	32.9
Total	2,510	2,772	3,233	2,505	3,693	100.0	100.0	100.0	100.0	100.0
Females										
Sheriff	363	368	304	240	342	71.0	62.6	49.4	44.3	45.9
Stipendiary Magistrate	-	50	55	67	146	-	8.5	8.9	12.4	19.6
District	148	170	257	235	255	29.0	28.9	41.7	43.4	34.2
Total	511	588	616	542	745	100.0	100.0	100.0	100.0	100.0

1. Figures for 2006-07 include some estimated data for East Dunbartonshire and West Dunbartonshire.

2. Total figures for 2007-08 include 9 cases for Renfrewshire where court type not known.

Male figures for 2007-08 include 7 cases for Renfrewshire where court type not known.

Female figures for 2007-08 include 2 cases for Renfrewshire where court type not known.

3. Totals will not sum to 100% due to incomplete Renfrewshire data.

Breach Applications⁽¹⁾ of Supervised Attendance Orders by by Type of Court and Gender, 2003-04 to 2007-08
Number and Per cent of Breach Applications

Table 6.2

Type of Court and Gender	Breach Applications					Individuals with Breach Applications				
	2003-04	2004-05 ⁽²⁾	2005-06 ⁽²⁾	2006-07	2007-08	2003-04	2004-05 ⁽²⁾	2005-06 ⁽²⁾	2006-07	2007-08
Sheriff Court										Number
Males	653	730	676	512	547	571	667	558	445	493
Females	109	115	122	81	96	105	100	107	74	89
Stipendiary Magistrates Court										
Males	1	118	166	140	183	1	111	151	134	158
Females	-	32	32	35	37	-	29	28	35	33
District Court										
Males	208	163	377	293	371	168	140	358	254	302
Females	41	45	89	64	77	33	37	78	54	65
Total	1,012	1,203	1,462	1,125	1,311	878	1,084	1,280	996	1,140
Sheriff Court										Per cent
Males	64.5	60.7	46.2	45.5	41.7	65.0	61.5	43.6	44.7	43.2
Females	10.8	9.6	8.3	7.2	7.3	12.0	9.2	8.4	7.4	7.8
Stipendiary Magistrates Court										
Males	0.1	9.8	11.4	12.4	14.0	0.1	10.2	11.8	13.5	13.9
Females	-	2.7	2.2	3.1	2.8	-	2.7	2.2	3.5	2.9
District Court										
Males	20.6	13.5	25.8	26.0	28.3	19.1	12.9	28.0	25.5	26.5
Females	4.1	3.7	6.1	5.7	5.9	3.8	3.4	6.1	5.4	5.7
Total	100.0	100.0	100.0	100.0	100.0	100.0	100.0	100.0	100.0	100.0

1. See Annex, paragraph 13.24.

2. Information on breaches of SAOs was not available in Edinburgh in 2004-05 or 2005-06.

Breach Applications⁽¹⁾ of Supervised Attendance Orders by Outcome and Gender, 2005-06 to 2007-08
Number and Per cent of Breach Applications

Table 6.3

Outcome	2005-06 ⁽²⁾			2006-07			2007-08		
	Males	Females	Total	Males	Females	Total	Males	Females	Total
Revoked and Custody	126	30	156	118	8	126	157	9	166
Continued and hours varied	114	30	144	69	10	79	73	16	89
Continued and no further action	173	41	214	154	31	185	165	38	203
Application failed - no further action	14	-	14	11	1	12	21	6	27
Warrant still outstanding	106	16	122	122	21	143	15	3	18
Outcome not yet known	370	62	432	282	63	345	316	66	382
Other ⁽³⁾	316	64	380	189	46	235	354	72	426
Total	1,219	243	1,462	945	180	1,125	1,101	210	1,311
Revoked and Custody	10.3	12.3	10.7	12.5	4.4	11.2	14.3	4.3	12.7
Continued and hours varied	9.4	12.3	9.8	7.3	5.6	7.0	6.6	7.6	6.8
Continued and no further action	14.2	16.9	14.6	16.3	17.2	16.4	15.0	18.1	15.5
Application failed - no further action	1.1	-	1.0	1.2	0.6	1.1	1.9	2.9	2.1
Warrant still outstanding	8.7	6.6	8.3	12.9	11.7	12.7	1.4	1.4	1.4
Outcome not yet known	30.4	25.5	29.5	29.8	35.0	30.7	28.7	31.4	29.1
Other ⁽³⁾	25.9	26.3	26.0	20.0	25.6	20.9	32.2	34.3	32.5
Total	100.0	100.0	100.0	100.0	100.0	100.0	100.0	100.0	100.0

1. See Annex, paragraph 13.24.

2. Information on breaches of SAOs was not available in Edinburgh in 2005-06.

3. Other includes order continued and length varied, continued and fine, revoked and new SAO, revoked and admonished, revoked and CS, revoked and fine, revoked and other, breach application withdrawn and recall.

Terminations of Supervised Attendance Orders by Reason and Gender, 2005-06 to 2007-08
Number and Per cent of Terminations

Table 6.4

Reason for Termination	2005-06 ⁽¹⁾			2006-07			2007-08		
	Males	Females	Total	Males	Females	Total	Males	Females	Total
Order successfully completed	1,411	299	1,710	1,380	281	1,661	1,388	297	1,685
Revoked due to Review	207	45	252	226	56	282	241	61	302
Revoked due to Breach	705	123	828	517	112	629	679	118	797
Transfer out of Area	57	8	65	46	8	54	68	11	79
Death	18	2	20	8	2	10	14	-	14
Other	32	5	37	78	10	88	75	18	93
Total	2,430	482	2,912	2,255	469	2,724	2,465	505	2,970
Order successfully completed	58.1	62.0	58.7	61.2	59.9	61.0	56.3	58.8	56.7
Revoked due to Review	8.5	9.3	8.7	10.0	11.9	10.4	9.8	12.1	10.2
Revoked due to Breach	29.0	25.5	28.4	22.9	23.9	23.1	27.5	23.4	26.8
Transfer out of Area	2.3	1.7	2.2	2.0	1.7	2.0	2.8	2.2	2.7
Death	0.7	0.4	0.7	0.4	0.4	0.4	0.6	-	0.5
Other	1.3	1.0	1.3	3.5	2.1	3.2	3.0	3.6	3.1
Total	100.0	100.0	100.0	100.0	100.0	100.0	100.0	100.0	100.0

1. Information on terminations of SAOs was not available in Edinburgh in 2005-06.

**Breach Applications of Drug Treatment and Testing Orders by Outcome, 2005-06 to 2007-08
Number and Per cent of Breach Applications**

Table 7.1

Outcome	2005-06 ⁽¹⁾			Breach Applications 2006-07			2007-08		
	Males	Females	Total	Males	Females	Total	Males	Females	Total
Revoked and Custody	66	8	74	97	13	110	48	22	70
Revoked and Community Service	-	-	-	3	-	3	-	-	-
Revoked and Probation Order	3	2	5	10	13	23	3	3	6
Revoked and new DTTO	1	-	1	3	3	6	5	-	5
Revoked and other	19	7	26	30	8	38	17	6	23
Warrant for apprehension/recall	13	4	17	19	5	24	15	-	15
DTTO continued and monetary penalty	1	-	1	-	1	1	2	1	3
DTTO continued and varied	2	4	6	2	-	2	2	1	3
No action by court	47	12	59	35	10	45	19	13	32
Outcome not yet known	25	11	36	23	11	34	24	6	30
Other ⁽²⁾	8	-	8	26	6	32	18	4	22
Total	185	48	233	248	70	318	153	56	209
									<i>Per cent</i>
Revoked and Custody	35.7	16.7	31.8	39.1	18.6	34.6	31.4	39.3	33.5
Revoked and Community Service	-	-	-	1.2	-	0.9	-	-	-
Revoked and Probation Order	1.6	4.2	2.1	4.0	18.6	7.2	2.0	5.4	2.9
Revoked and new DTTO	0.5	-	0.4	1.2	4.3	1.9	3.3	-	2.4
Revoked and other	10.3	14.6	11.2	12.1	11.4	11.9	11.1	10.7	11.0
Warrant for apprehension/recall	7.0	8.3	7.3	7.7	7.1	7.5	9.8	-	7.2
DTTO continued and monetary penalty	0.5	-	0.4	-	1.4	0.3	1.3	1.8	1.4
DTTO continued and varied	1.1	8.3	2.6	0.8	-	0.6	1.3	1.8	1.4
No action by court	25.4	25.0	25.3	14.1	14.3	14.2	12.4	23.2	15.3
Outcome not yet known	13.5	22.9	15.5	9.3	15.7	10.7	15.7	10.7	14.4
Other ⁽²⁾	4.3	-	3.4	10.5	8.6	10.1	11.8	7.1	10.5
Total	100.0	100.0	100.0	100.0	100.0	100.0	100.0	100.0	100.0

1. Information on breaches of DTTOs was not available in Edinburgh in 2005-06.

2. Other includes sentences deferred on breach and order continued.

**Terminations of Drug Treatment and Testing Orders by Reason, 2005-06 TO 2007-08
Number and Per cent of Terminations**

Table 7.2

Reason	Number of Orders			Per cent of Orders		
	2005-06	2006-07	2007-08	2005-06	2006-07	2007-08
All						
Order Successfully Completed	186	210	183	40.0	38.2	37.3
Revoked due to Review	81	76	68	17.4	13.8	13.8
Revoked due to Breach	154	208	173	33.1	37.8	35.2
Transfer out of area	4	2	7	0.9	0.4	1.4
Death	4	1	2	0.9	0.2	0.4
Other ⁽¹⁾	36	53	58	7.7	9.6	11.8
Total	465	550	491	100.0	100.0	100.0
Males						
Order Successfully Completed	155	174	160	40.1	38.8	39.4
Revoked due to Review	70	66	58	18.1	14.7	14.3
Revoked due to Breach	125	162	132	32.3	36.2	32.5
Transfer out of area	3	1	5	0.8	0.2	1.2
Death	4	1	2	1.0	0.2	0.5
Other ⁽¹⁾	30	44	49	7.8	9.8	12.1
Total	387	448	406	100.0	100.0	100.0
Females						
Order Successfully Completed	31	36	23	39.7	35.3	27.1
Revoked due to Review	11	10	10	14.1	9.8	11.8
Revoked due to Breach	29	46	41	37.2	45.1	48.2
Transfer out of area	1	1	2	1.3	1.0	2.4
Death	-	-	-	-	-	-
Other ⁽¹⁾	6	9	9	7.7	8.8	10.6
Total	78	102	85	100.0	100.0	100.0

1. Other includes new orders given, change in circumstances, custody for separate offence, early discharge and admonished.

**Number of Individuals Subject to Statutory Throughcare as at 31 March, 2006-2008
Number, Per Cent and Number per 10,000 population**

Table 8.1

Type of Supervision	2006 ⁽¹⁾			2007 ⁽²⁾			2008 ⁽³⁾		
	Males	Females	Total	Males	Females	Total	Males	Females	Total
Number of individuals subject to statutory throughcare as at 31 March:									
in the community	2,165	73	2,238	2,209	105	2,314	2,210	96	2,306
in custody	2,547	94	2,641	2,699	68	2,767	2,907	79	2,986
Total	4,730	171	4,901	4,908	173	5,081	5,117	175	5,292
Number of individuals subject to statutory throughcare as at 31 March:									
in the community	45.8	42.7	45.7	45.0	60.7	45.5	43.2	54.9	43.6
in custody	53.8	55.0	53.9	55.0	39.3	54.5	56.8	45.1	56.4
Total	100.0	100.0	100.0	100.0	100.0	100.0	100.0	100.0	100.0

1. Includes total figures for Moray who were unable to provide a breakdown by community and custody.
 2. Figures for 2007 include some estimated data for Argyll and Bute and East Dunbartonshire.
 3. Figures for 2008 include some provisional data for Highland.

Throughcare Cases Commenced (in the community), 2006-07 to 2007-08
Number, Per Cent and Number per 10,000 population

Table 8.2

Type of Supervision	2006-07 ⁽¹⁾			2007-08		
	Males	Females	Total	Males	Females	Total
	<i>Number</i>					
Life	42	-	63	58	4	62
Parole	332	10	356	337	15	352
Non Parole	288	9	315	257	16	273
Extended Sentences	114	1	157	96	3	99
Supervised Release Orders	144	17	197	151	17	168
Short-Term Sex Offenders ⁽²⁾	51	-	62	59	-	59
Other ⁽³⁾	66	6	106	42	1	43
Total	1,037	43	1,256	1,000	56	1,056
	<i>Percent</i>					
Life	4.1	-	5.0	5.8	7.1	5.9
Parole	32.0	23.3	28.3	33.7	26.8	33.3
Non Parole	27.8	20.9	25.1	25.7	28.6	25.9
Extended Sentences	11.0	2.3	12.5	9.6	5.4	9.4
Supervised Release Orders	13.9	39.5	15.7	15.1	30.4	15.9
Short-Term Sex Offenders ⁽²⁾	4.9	-	4.9	5.9	-	5.6
Other ⁽³⁾	6.4	14.0	8.4	4.2	1.8	4.1
Total	100.0	100.0	100.0	100.0	100.0	100.0
	<i>Number per 10,000 population</i>					
Life	0.2	-	0.2	0.3	*	0.2
Parole	1.9	0.1	1.0	1.9	0.1	1.0
Non Parole	1.6	*	0.9	1.4	0.1	0.7
Extended Sentences	0.6	*	0.4	0.5	*	0.3
Supervised Release Orders	0.8	0.1	0.5	0.8	0.1	0.5
Short-Term Sex Offenders ⁽²⁾	0.3	-	0.2	0.3	-	0.2
Other ⁽³⁾	0.4	*	0.3	0.2	*	0.1
Total	5.8	0.2	3.4	5.6	0.3	2.9

- Figures for 2006-07 include some estimated data for Argyll and Bute and East Dunbartonshire. Total column includes orders from Glasgow where gender breakdown was not available. Figures have been revised since last publication to include revised data from Glasgow
- Section 15 of the Management of Offenders Etc. (Scot) Act 2005. Collected for first time in 2005-06.
- Includes transfers from England, automatic conditional release licences, short sentence licences, determinate parole and not known/recorded.

Number of Statutory Throughcare Cases (in the community), as at 31st March 2008

Number, Per Cent and Number per 10,000 population

Table 8.3

Type of Supervision	Number of cases			Per cent of cases		
	Males	Females	Total	Males	Females	Total
Life	405	12	417	18.3	12.5	18.1
Parole	656	30	686	29.7	31.3	29.7
Non Parole	413	20	433	18.7	20.8	18.8
Extended Sentences	197	5	202	8.9	5.2	8.8
Supervised Release Orders	186	18	204	8.4	18.8	8.8
Short-Term Sex Offenders ⁽¹⁾	41	2	43	1.9	2.1	1.9
Recalled Prisoners	216	3	219	9.8	3.1	9.5
Other ⁽²⁾	96	6	102	4.3	6.3	4.4
Total	2,210	96	2,306	100.0	100.0	100.0

- Section 15 of the Management of Offenders Etc. (Scot) Act 2005. Collected for first time in 2005-06.
- 'Other' includes short sentence licences, determinate parole, transfers in from outwith Scotland, automatic conditional release licences, aftercare, no specific licence type recorded.

**Throughcare Cases Completed (in the community), 2006-07 to 2007-08
Number, Per Cent and Number per 10,000 population**

Table 8.4

Type of Supervision	2006-07 ⁽¹⁾			2007-08 ⁽²⁾		
	Males	Females	Total	Males	Females	Total
	<i>Number</i>					
Life	43	1	44	49	2	51
Parole	385	13	398	274	7	281
Non Parole	289	4	293	226	9	235
Extended Sentences	58	2	60	89	-	89
Supervised Release Orders	80	9	89	146	6	152
Short-Term Sex Offenders ⁽³⁾	29	-	29	34	-	34
Other ⁽⁴⁾	37	4	41	37	-	37
Total	921	33	954	855	24	879
	<i>Percent</i>					
Life	4.7	3.0	4.6	5.7	8.3	5.8
Parole	41.8	39.4	41.7	32.0	29.2	32.0
Non Parole	31.4	12.1	30.7	26.4	37.5	26.7
Extended Sentences	6.3	6.1	6.3	10.4	-	10.1
Supervised Release Orders	8.7	27.3	9.3	17.1	25.0	17.3
Short-Term Sex Offenders ⁽³⁾	3.1	-	3.0	4.0	-	3.9
Other ⁽⁴⁾	4.0	12.1	4.3	4.3	-	4.2
Total	100.0	100.0	100.0	100.0	100.0	100.0
	<i>Number per 10,000 population</i>					
Life	0.2	*	0.1	0.3	*	0.1
Parole	2.2	0.1	1.1	1.5	*	0.8
Non Parole	1.6	*	0.8	1.3	*	0.6
Extended Sentences	0.3	*	0.2	0.5	-	0.2
Supervised Release Orders	0.4	*	0.2	0.8	*	0.4
Short-Term Sex Offenders ⁽³⁾	0.2	-	0.1	0.2	-	0.1
Other ⁽⁴⁾	0.2	*	0.1	0.2	-	0.1
Total	5.2	0.2	2.6	4.8	0.1	2.4

1. Figures for 2006-07 include some estimated data for Argyll and Bute and East Dunbartonshire.
2. Figures for 2007-08 exclude Highland. Figures not available due to migration to new IT system.
3. Section 15 of the Management of Offenders Etc. (Scot) Act 2005. Collected for first time in 2005-06.
4. Includes automatic conditional release licences, short sentence licences, determinate parole and conditional release licences.

**Statutory Throughcare cases commenced (in custody), 2007-08
Number, Per cent and Number per 10,000 Population**

Table 8.5

Type of Supervision	Number of cases			Per cent of cases			Cases per 10,000 population		
	Males	Females	Total	Males	Females	Total	Males	Females	Total
Order for Lifelong Restriction	2	-	2	0.2	-	0.2	*	-	*
Life	140	1	141	11.6	2.6	11.3	0.8	*	0.4
Extended Sentences	166	6	172	13.7	15.8	13.8	0.9	*	0.5
Supervised Release Orders	136	11	147	11.2	28.9	11.8	0.8	0.1	0.4
Short-Term Sex Offenders ⁽¹⁾	51	-	51	4.2	-	4.1	0.3	-	0.1
Other determinate sentences of 4 years and over	714	20	734	59.1	52.6	58.9	4.0	0.1	2.0
Total	1,209	38	1,247	100.0	100.0	100.0	6.7	0.2	3.4

1. Section 15 of the Management of Offenders Etc. (Scot) Act 2005. Collected for first time in 2005-06.

Statutory Throughcare cases (in custody) as at 31st March 2008
Number, Per cent and Cases per 10,000 Population

Table 8.6

Type of Supervision	Number of cases			Per cent of cases			Cases per 10,000 population		
	Males	Females	Total	Males	Females	Total	Males	Females	Total
Order for Lifelong Restriction Life	6	-	6	0.2	-	0.2	*	-	*
Extended Sentences	597	15	612	20.5	19.0	20.5	3.3	0.1	1.7
Supervised Release Orders	451	13	464	15.5	16.5	15.5	2.5	0.1	1.3
Short-Term Sex Offenders ⁽¹⁾	173	9	182	6.0	11.4	6.1	1.0	0.0	0.5
Other determinate sentences of 4 years and over	39	-	39	1.3	-	1.3	0.2	-	0.1
Total	1,641	42	1,683	56.4	53.2	56.4	9.1	0.2	4.6
	2,907	79	2,986	100.0	100.0	100.0	16.2	0.4	8.1

1. Section 15 of the Management of Offenders Etc. (Scot) Act 2005. Collected for first time in 2005-06.

Voluntary Assistance and Throughcare Addiction Service (TAS), 2007-08
Number of cases commenced and number of individuals

Table 8.7

	Number of cases commenced ⁽¹⁾	Number of individuals who received assistance ⁽²⁾
Voluntary Assistance	2,603	2,175
Of which: Throughcare Addiction Service Total⁽¹⁾	1,424	1,079
All Males	1,125	862
Young male prisoners (aged under 21) serving sentences under 31 days	11	7
Adult male prisoners (aged 21 years and over)	996	729
All Females	229	165
Females serving sentences of under 31 days	6	5

1. Total includes 70 cases for Highland for which a breakdown was unavailable.

2. Total includes 52 individuals for Highland for which a breakdown was unavailable.

Home Circumstance Reports by Gender, 2006-07 to 2007-08
Number, Per Cent and Reports per 10,000 population

Table 9.1

Home Circumstance Reports	2006-07 ⁽¹⁾			2007-08		
	Males	Females	Total	Males	Females	Total
<i>Number</i>						
Number of reports for parole / non-parole ⁽²⁾	1,311	31	1,342	1,340	46	1,386
Number of reports for home leave	960	29	989	1,276	39	1,315
Total number of reports	2,271	60	2,331	2,616	85	2,701
<i>Per cent</i>						
Number of reports for parole / post supervision	57.7	51.7	57.6	51.2	54.1	51.3
Number of reports for home leave	42.3	48.3	42.4	48.8	45.9	48.7
Total number of reports	100.0	100.0	100.0	100.0	100.0	100.0
<i>Number per 10,000 population</i>						
Number of reports for parole / post supervision	7.4	0.2	3.7	7.5	0.2	3.8
Number of reports for home leave	5.4	0.2	2.7	7.1	0.2	3.6
Total number of reports	12.7	0.3	6.4	14.6	0.5	7.4

1. Figures for 2006-07 include some estimated data for Argyll and Bute, East Dunbartonshire and Highland.

2. All HCRs in Highland in 2007-08 were included under reports for parole/non-parole as a breakdown was not available.

Diversion from Prosecution by Gender, 2005-06 to 2007-08
Number of Referrals/Assessments/Cases/Individuals

Table 10.1

	2005-06			2006-07 ⁽¹⁾			2007-08		
	Males	Females	Total	Males	Females	Total	Males	Females	Total
Referrals	878	723	1,601	858	768	1,626	616	642	1,258
Assessments Undertaken	815	675	1,490	705	631	1,336	539	565	1,104
Cases Commenced	663	535	1,198	605	528	1,133	451	505	956
Number of individuals	618	517	1,135	570	519	1,089	440	499	939
Cases Successfully Completed	438	330	768	441	368	809	418	400	818
Cases referred to drug treatment/education ⁽²⁾	37	17	54	41	22	63	33	18	51

1. Figures for 2006-07 include some cases commenced which were a result of referrals from the previous year.

2. Figures for 2006-07 exclude figures for Highland as these cases were not recorded.

Bail information requests and bail information cases, 2005-06 to 2007-08

Number of Requests, Cases and Individuals

Table 11.1

	2005-06	2006-07 ⁽¹⁾	2007-08
Requests from court for bail information	8,052	8,905	7,957
Bail supervision cases⁽²⁾			
Number commenced	917	782	729
Number of individuals	774	687	657

1. Figures for 2006-07 includes some estimated data for Argyll and Bute, East Dunbartonshire and West Dunbartonshire.
2. 2007-08 data excludes figures for Renfrewshire who were unable to provide data.

Court Services by Gender, 2006-07 to 2007-08

Total number of service outturns achieved

Table 11.2

Court Services	2006-07 ^(1,2)			2007-08 ⁽³⁾		
	Male	Female	Total	Male	Female	Total
Total number of stand down reports⁽⁴⁾	1,843	533	2,741	1,673	435	2,309
Written	489	168	687	549	148	697
Oral	1,354	365	2,054	1,124	287	1,411
Number of post sentence interviews	11,950	2,291	14,985	10,755	2,204	13,770

1. Total for 2006-07 includes figures for Fife where a gender breakdown was not available.
2. Figures for 2006-07 includes some estimated data for East Dunbartonshire and 2005-06 for City of Edinburgh as latest data not available.
3. Two of the six local authorities within Highland Council were unable to provide this information.
4. Total number of stand down reports for 2007-08 includes 201 reports in Renfrewshire where a breakdown was not available.

ANNEX

13. Notes and Definitions

Background

13.1 Criminal justice social work services in Scotland are provided by local authorities throughout the country.

13.2 In 1991 the Scottish Office's Social Work Services Group published National Objectives and Standards for criminal justice social work services. These National Standards had been agreed in consultation with local authorities and all the key stakeholders of the criminal justice system. The National Standards set out a framework of objectives and standards for the delivery of criminal justice social work services and how non-compliance by offenders with orders of the court should be handled.

Community Justice Authorities

13.3 The Management of Offenders etc. (Scotland) Act 2005 established provisions for eight local Community Justice Authorities (CJAs). These authorities have been established to provide a co-ordinated approach to planning and monitoring the delivery of offender services by planning, managing performance and reporting on performance of local authorities or groups of local authorities and key partner agencies including the SPS. Their aim is to target services to reduce reoffending and to ensure close co-operation between community and prison services to aid the rehabilitation of offenders. Each CJA consists of a Chief Officer, elected members of local authorities and support staff to carry out the functions of the CJA. All eight CJAs will be fully operational from April 2007. Tables at CJA area have been published on the Scottish Government website as part of this publication.

13.4 There are 8 CJAs and they contain the following Local Authority areas:

Community Justice Authority	Local Authorities
Fife and Forth Valley	Fife, Clackmannanshire, Falkirk and Stirling
Glasgow	Glasgow City
Lanarkshire	North Lanarkshire and South Lanarkshire
Lothian and Borders	Edinburgh, East Lothian, Midlothian, West Lothian and Scottish Borders
North Strathclyde	Argyll and Bute, East Dunbartonshire, East Renfrewshire, Inverclyde, Renfrewshire, West Dunbartonshire
Northern	Aberdeen City, Aberdeenshire, Eilean Siar, Highland, Moray, Orkney Islands, Shetland Islands
South West Scotland	East Ayrshire, North Ayrshire, South Ayrshire and Dumfries and Galloway
Tayside	Angus, Dundee City, Perth and Kinross

Social Enquiry Reports

13.5 The main purpose of a Social Enquiry Report (SER) is to provide information about the offender and their background circumstances, prior to sentencing, which helps the court decide how to deal with the case. Reports can be requested by the court for any case but must be requested before imposing a custodial sentence for the first time, or if the offender is under 21 years of age. A court must obtain a SER before making a community service or probation order.

13.6 In some cases, supplementary reports may be submitted to the court. These are shorter reports which provide supplementary information (in addition to that previously provided in a SER).

Community Service

13.7 A person 16 years of age or over and convicted of a crime or an offence can be given a Community Service Order (CSO) to carry out unpaid work in the community. CSOs can only be made by courts as an alternative to a custodial sentence. The court must also be satisfied that four conditions are met:

- the offender must agree to the CSO;
- community service must be available in the area where the offender lives;
- the offender is suitable for community service;
- suitable work is available.

13.8 Community Service Orders are for a minimum of 80 hours up to a maximum of 240 hours under summary procedure and 300 hours under solemn procedure. They must be completed within 12 months.

Probation

13.9 Probation Orders provide one of the opportunities for criminal justice social work services to focus on offending behaviour. Prior consent of the offender is required, and the order should be informed by an Action Plan in which the offender agrees to address their offending behaviour and its underlying causes. Probation Orders can be used very flexibly by the courts and additional conditions can be attached regarding the offender undertaking unpaid work, their place of residence, curfew (including electronic monitoring), financial recompense to the victim or attendance at a specialist programme such as alcohol or drug treatment. The minimum length of a Probation Order is 6 months and the maximum is 3 years.

Supervised Attendance

13.10 Supervised Attendance Orders require an offender who has failed to pay a fine to undertake a programme of designated activities for a specified number of hours. The programme can involve:

- activities of an educational nature;
- activities designed to stimulate interest and encourage the constructive use of time;
- activities involving unpaid work in the community.

13.11 Supervised Attendance Orders run for between 10 and 100 hours (subject to a limit of 50 hours where the outstanding amount is up to £200) as ordered by the court.

Drug Treatment and Testing

13.12 The Drug Treatment and Testing Order (DTTO) is a high tariff disposal for drug mis-using offenders who might otherwise receive a custodial sentence, and is available to the High Court, Sheriff Court and Glasgow Stipendiary Magistrates Court. The Order contains features unique to a community disposal, including a requirement for regular reviews by the court and a requirement that the offender consent to frequent random drug tests throughout the lifetime of the Order.

13.13 DTTOs were rolled out across Scotland in phases. Between 1999 and 2002 the Order was rolled out to Glasgow, Fife and Aberdeen. In 2002-03 the Order became available in Edinburgh, Renfrewshire/Inverclyde and Tayside. From 2005-06 the Order has been available to the High Court and to almost every Sheriff court in Scotland with the final courts coming on stream in September 2006.

Restriction of Liberty

13.14 Restriction of Liberty Orders have been available to High, Sheriff and Stipendiary Courts in Scotland since May 2002. A Restriction of Liberty Order can be imposed for periods of up to one year, and involves restricting an individual to a specified place for up to 12 hours per day and/or from a specified place for up to 24 hours.

13.15 The number of Restriction of Liberty Orders imposed can be sourced from the Criminal Proceedings in Scottish Courts Statistical Bulletin. The contract for monitoring compliance with Restriction of Liberty Orders is currently held by Serco Limited. Breach data can be requested the Scottish Government if required.

Throughcare, Voluntary Assistance, Throughcare Addiction Service and Home Circumstance

13.16 Throughcare is the provision of a range of social work and associated services to prisoners and their families from the point of sentence or remand, during the period of imprisonment and following release into the community. Prisoners serving more than 4 years are released with a statutory obligation that they be supervised. Prisoners serving less than 4 years but who are short-term sex offenders (Section 15 of the Management of Offenders Etc. (Scot) Act 2005) or who are subject to an extended sentence or supervised release order are also supervised on release. Throughcare services have a primary objective of public protection, though they are also concerned with assisting prisoners to prepare for release and helping them to resettle into their community within the law.

13.17 Prior to 2004-05, some Local Authorities are known to have included data for Throughcare for serving prisoners and Voluntary Assistance in their figures for Throughcare in the community. 2004-05 was the first year in which authorities were asked to provide separate figures for Throughcare in Custody, Throughcare in the

Community and Voluntary Assistance. The figures for 2004-05 cannot therefore be directly compared with those for previous years. There were some further changes to the Throughcare data collection in 2005-06 and the tables are footnoted where these affect comparison with existing trends.

13.18 Voluntary assistance is available to prisoners not subject to statutory throughcare supervision on release but who request such a service while in custody or within 12 months of release. From 2005-06, figures on voluntary assistance include the Throughcare Addiction Service (TAS).

13.19 The new Throughcare Addiction Service (TAS) commenced on 1 August 2005 and forms part of the voluntary aftercare service, which is often referred to as “Phase 2” of the Enhanced Throughcare Strategy. TAS is delivered by local authority criminal justice social work – or by one of their contracted service providers – who will work with the offender in the 6 week period prior to release from custody through the 6 week period post-release. The TAS worker will offer a more intensive motivational service and attempt to help the offender address their addiction (and associated) difficulties and link them into appropriate services. TAS is not normally available to those prisoners who are serving sentences of less than 31 days unless they are within the following two priority groups: female offenders and young male offenders (aged under 21 years). Information on TAS was collected for the first time via the 2005-06 aggregate return.

Diversion from Prosecution

13.20 Social Work Diversion schemes aim to provide persons accused of minor offences with support and advice in relation to problems associated with their offending. In such cases, prosecution is deferred, subject to successful completion of the scheme.

Bail Information

13.21 Bail Information was collected from local authorities for the first time in 2003-04. Bail information records assistance to Procurators Fiscal and courts through verification of information in respect of cases where bail might otherwise have been opposed or refused.

Sources of information

13.22 Form CJS, an aggregate return covering data on Social Enquiry Reports, Community Service Orders and Probation Orders, was introduced for the year ending 31 March 2000. The return is submitted annually by each local authority. Additional data items have been added to the return over time, including:

Supervised Attendance Orders - added from 2000-01
Throughcare (Statutory Post Release Supervision) – added from 2001-02
Diversion from Prosecution – added from 2001-02
Drug Treatment and Testing Orders – added from 2002-03
Bail information – added from 2003-04
Voluntary Assistance – added from 2004-05
Court Services – added from 2004-05

Throughcare Addiction Service – added from 2005-06

The content and format of the return continues to evolve, to reflect new demands for information and to clarify points of definition in relation to particular data items. Some caution should therefore be exercised when making comparisons over time.

13.23 The total population figures used as denominators in this bulletin are the relevant mid-year estimates for 16-70 year olds, as prepared by the General Register Office for Scotland (GROS).

13.24 Improvements in data quality are continuing, particularly for figures on breach applications where methodological changes have resulted in better recording of breaches. As a result, breach application figures for 2000-01 onwards are considered to be more accurate than those for previous years and comparisons between years should therefore be treated with caution.

13.25 The statistics presented in this bulletin reflect the information as known to the Scottish Government at December 2008. They may therefore differ slightly from those published previously, and may be subject to revision in future bulletins in this series.

13.26 The following symbols are used throughout the tables in this bulletin:

- Nil

* < 0.1

n/a Not available

SCOTTISH GOVERNMENT STATISTICIAN GROUP

OUR AIM

To provide relevant and reliable information, analysis and advice that meet the needs of government, business and the people of Scotland.

OBJECTIVES

1. To produce statistics and analysis relevant to user needs by
 - Developing our understanding of customer requirements to ensure statistics are kept relevant and analysis is well targeted;
 - Developing the range of statistics and analysis we produce;
 - Where practicable improving timeliness;
 - Providing more statistics disaggregated by age, gender and ethnicity;
 - Developing more data for small areas through the Neighbourhood Statistics project;
 - Contributing to production of comparable statistics across the UK and internationally.
2. To ensure effective use of our statistics by
 - Contributing more directly to policy processes inside and where possible outside government;
 - Improving access to and presentation of data and analysis;
 - Improving the advice provided on statistics.
3. To work effectively with users and providers by
 - Maintaining arrangements to consult and involve users and providers;
 - Involving users and providers in planning developments in outputs and processes;
 - Minimising the burden on data providers through dropping or streamlining collections as appropriate, to ensure the benefits of the information justify the costs of collection.
4. To develop the quality of statistics by
 - Assuring and improving quality as an integral part of data collection and analysis and through regular reviews in line with National Statistics quality strategy;
 - Developing statistical methods, systems and classifications;
 - Working with the rest of the Government Statistical Service to develop joint approaches/solutions where appropriate.
5. To assure the integrity of statistics by
 - Maintaining and promoting integrity through implementation of the National Statistics Code of Practice and related protocols;
 - Safeguarding the confidentiality of data subjects.
6. To ensure the efficient and effective delivery of statistics products and services by
 - Making best use of all sources including administrative sources;
 - Working with other analysts to maximise the contribution of our own and other analysts' work;
 - Ensuring value for money;
 - Making best use of Information and Communications Technology;
 - Ensuring effective communication within the Statistician Group.
7. To develop our workforce and competences
 - Ensuring recruitment of staff with the necessary skills and potential;
 - Ensuring development of expertise amongst existing staff;
 - Promoting and upholding the standards of the statistics profession.

This is a National Statistics publication

"This is a National Statistics publication. It has been produced to high professional standards set out in the National Statistics Code of Practice Protocol - see www.statistics.gov.uk/about_ns/cop/default.asp

These statistics undergo regular quality assurance reviews to ensure that they meet customer needs. They are produced free from any political interference."

Details of pre-release access will be provided in the Scottish Government Statistics Website under 'Forthcoming Releases'

Correspondence and enquiries

<p>Enquiries on reconvictions should be addressed to:</p> <p>Elisabeth Boyling Justice Analytical Services Justice and Communities Directorate GWR, St Andrews House Edinburgh, EH1 3DG Telephone: 0131 244 2752; Fax: 0131 244 2623 e-mail: elisabeth.boyling@scotland.gsi.gov.uk</p>	<p>General enquiries on Scottish Government statistics can be addressed to:</p> <p>Angela McLean Office of the Chief Statistician Scottish Government 3 Floor West Rear, St Andrews House EDINBURGH EH1 3DG Telephone: (0131) 244 0442; Fax: (0131) 244 2223 e-mail: statistics.enquiries@scotland.gsi.gov.uk</p>
---	---

Advice on specific areas of Scottish Government statistical work can be obtained from staff at the telephone numbers given below:

Scottish Government Statistics contacts		Other contacts for Scottish statistics	
Schools – qualifications	(0131) 244 0315	Forestry Commission	(0131) 314 6337
Schools – pupils and teachers	(0131) 244 1689	The Scottish Funding Councils for Higher and Further Education	(0131) 313 6575
Further and Higher Education	(0141) 242 0273	General Register Office for Scotland	(0131) 314 4243
The Economy	(0131) 244 2234	- Vital statistics and publications	
Labour market	(0141) 242 5446	- Population statistics, census statistics or digital boundary products	(0131) 314 4254
Business	(0141) 242 5446		
Income, Tax and Benefits	(0131) 244 2583		
Local government finance	(0131) 244 7033		
Environment	(0131) 244 0445		
Planning	(0131) 244 0439		
Equality	(0131) 244 0324		
Housing	(0131) 244 7236		
Transport	(0131) 244 7255		
Health	(0131) 244 3432		
Community Care	(0131) 244 3777		
Social Justice	(0131) 244 0442		
Scottish Government personnel	(0131) 244 3926		
Agricultural census and labour force	(0131) 244 6150		
Fisheries	(0131) 244 6441		
Courts and law	(0131) 244 2227		
Recorded crime	(0131) 244 2635		
Prisons	(0131) 244 2147		

For **general enquiries about National Statistics** in the United Kingdom Government contact the National Statistics Public Enquiry Service on

020 7533 5888
minicom: 01633 812399
Email: info@statistics.gov.uk
Fax: 01633 652747
Letters: room DG/18, 1 Drummond Gate, LONDON SW1V 2QQ

You can also find National Statistics on the internet - go to www.statistics.gov.uk

If you would like to be consulted about new or existing statistical collections or receive notification of forthcoming statistical publications, please register your interest on the Scottish Government ScotStat website at <http://www.scotland.gov.uk/Topics/Statistics/scotstat>

Current contact points, e-mail addresses and the publications listed below as well as a range of other statistical publications can be found on the Scottish Government Web site at www.scotland.gov.uk/stats

Further information on the General Register Office for Scotland is available on the website www.gro-scotland.gov.uk

Most recent Justice Statistical Publications relating to the Crime and Justice theme

Ref no.	Title	Last published
978 0 7559 7231 9	Recorded Crime in Scotland, 2007/08	September 2008
978 0 7559 7280 7	Criminal Appeals Statistics, Scotland, 2007-08	September 2008
978 0 7559 7281	Recorded Crimes and Offences Involving Firearms, Scotland, 2007-08	October 2008
978 0 7559 7310 1	Domestic Abuse Recorded by the Police in Scotland, 2007-08	November 2008

Additional copies of these publications may be purchased from **Scottish Government Publication Sales, Blackwell's Bookshop, 53 South Bridge, Edinburgh, EH1 1YS**, Telephone: 0131 622 8283 or 0131 622 8258, Fax: 0131 557 8149. Cheques should be made payable to 'Blackwell's Bookshop'.

Complaints and suggestions

If you are not satisfied with our service, please write to the Chief Statistician, Mr Rob Wishart, 3R02, St Andrews House, Edinburgh, EH1 3DG, Telephone: (0131) 244 0302, e-mail rob.wishart@scotland.gsi.gov.uk. We also welcome any comments or suggestions that would help us to improve our standards of service.

ISSN 0264 1178 ISBN 978 0 7559 7341 5 Price £2.00

Crown Copyright
Brief extracts from the Crown Copyright material in this publication may be reproduced provided the source is fully acknowledged.

ISBN 978-0-7559-7341-5



9 780755 973415