



2010/2011 Scottish Crime and Justice Survey: Partner Abuse

2010/2011 Scottish Crime and Justice Survey: Partner Abuse

© Crown copyright 2011

You may re-use this information (excluding logos and images) free of charge in any format or medium, under the terms of the Open Government Licence. To view this licence, visit <http://www.nationalarchives.gov.uk/doc/open-government-licence/> or e-mail: psi@nationalarchives.gsi.gov.uk.

Where we have identified any third party copyright information you will need to obtain permission from the copyright holders concerned.

This document is available from our website at www.scotland.gov.uk.

ISBN: 978-1-78045-558-7 (web only)

The Scottish Government
St Andrew's House
Edinburgh
EH1 3DG

Produced for the Scottish Government by APS Group Scotland
DPPAS12360 (12/11)

Published by the Scottish Government, December 2011

SCJS publications

The 2010/11 Scottish Crime and Justice Survey: Main Findings was published on November 1st 2011. In addition to this report, which focuses on partner abuse, two other supplementary reports on the subjects of sexual victimisation and stalking and illicit drug use will be produced.

The dates of SCJS publications are pre-announced and can be found via the UK National Statistics Publication Hub:

<http://www.statistics.gov.uk/hub/index.html>

Copies of this report and other SCJS related Scottish Government publications are available from the Scottish Government's survey website:

<http://www.scotland.gov.uk/Topics/Statistics/Browse/Crime-Justice/crime-and-justice-survey>

For further information about the Scottish Crime and Justice Survey and Scottish police recorded crime statistics, please email stuart.king2@scotland.gsi.gov.uk or write to: Scottish Crime and Justice Survey, Scottish Government, St Andrew's House – GWR, Regent Road, Edinburgh EH1 3DG.

This report is a National Statistics output produced to the highest professional standards and free from political interference. It has been produced by researchers from the respected independent social research organisation TNS-BMRB working with Scottish Government researchers in the Justice Analytical Services Department.

Conventions used in figures and tables

Figures and tables

Each figure or table has a title (1), the data source (survey year etc.) (2), a base definition and the unweighted base figures (3). The SPSS data file variable name is also included (4). For example:

1. **Figure 0.1: Risk of experiencing partner abuse**
2. SCJS 2010/11.
3. Base: Adults who have had partner since age 16 (10,397); who have had a partner or been in contact with an ex-partner in last 12 months (7,652).
4. Variable name: *DA_1i*; *DA_1iii*.

Unweighted base

All SCJS percentages and rates presented in the figures and tables are based on weighted data (see Annex 2 for further details). However, figures and tables show the unweighted base above the figure / table which represents the number of respondents interviewed in the specified group.

Percentages

Row or column percentages may not add to 100 per cent due to rounding.

Most figures / tables present cell percentages where the figures refer to the percentage of respondents that have the attribute being discussed. The complementary percentage to add to 100 per cent may not be shown. Respondents could refuse to answer any question they did not wish to answer. The majority of questions also had a 'don't know' option. Percentages are generally not shown for these response categories.

A percentage may be quoted in the report text for a single category that is identifiable in the figures / tables only by summing two or more component percentages. To avoid rounding errors, the percentage has been recalculated for the single combined category and therefore may differ by one percentage point from the sum of the percentages derived from the figures / tables.

Table abbreviations

' - ' indicates that no respondents gave an answer in the category.

'0' indicates less than 0.5% (this does not apply when percentages are presented to one decimal point).

' * ' indicates that data are not reported because the unweighted base is less than 50.

CONTENTS

Executive Summary	1
1 Introduction	4
1.1 Partner abuse in the SCJS	4
1.2 The structure of the report	5
2 The Extent of Partner Abuse	7
2.1 Summary	7
2.2 Introduction	8
2.3 Presence of a partner	8
2.4 Risk of partner abuse	8
2.5 Risk of partner abuse – comparison over time	9
2.6 Variation in risk.....	10
2.7 Number of incidents experienced	12
2.8 Stalking and harassment by (ex) partners	13
3 The Nature and Impact of Partner Abuse	15
3.1 Summary	15
3.2 Introduction	16
3.3 Form of abuse experienced – psychological abuse	17
3.4 Form of abuse experienced – physical abuse	19
3.5 Partner details	20
3.6 Presence of children	22
3.7 Impact of incidents	22
3.8 Perceptions of incidents	25
3.9 Domestic abuse – perceptions of being a victim.....	27
4 Reporting Incidents	29
4.1 Summary	29
4.2 Introduction	29
4.3 Who was informed about the most recent / only incident	29
4.4 Reporting to the police	31
4.5 Reasons for not informing the police	32
4.6 Level of satisfaction with the police.....	33
Annex 1 Data Tables – Experience of Partner Abuse.....	33
Annex 2 Self-completion Questionnaire Method.....	53

FIGURES

Chapter 2

Figure 2.1: Risk of experiencing at least one form of partner abuse	9
Figure 2.2: Number of partner abuse incidents experienced in the last 12 months.....	13

Chapter 3

Figure 3.1: Gender of the offender(s) in any incident of partner abuse experienced since the age of 16; in the most recent / only incident experienced in the last 12 months.....	21
Figure 3.2: Most common impacts of most recent / only partner abuse experienced in the last 12 months – psychological	23
Figure 3.3: Most common impacts of most recent / only partner abuse experienced in the last 12 months - physical	25
Figure 3.4: Whether most recent / only experience of partner abuse experienced in the last 12 months was considered a crime	26
Figure 3.5: % in each group considering self to have been victim of domestic abuse (self-defined) / experienced partner abuse (SCJS 2009/10 definition)	28

Chapter 4

Figure 4.1: Most common people or organisations told about the most recent / only incident of partner abuse in the last 12 months	30
Figure 4.2: Whether police came to know about the most recent / only incident of partner abuse in the last 12 months	31
Figure 4.3: Most common reasons most recent / only partner abuse experienced in the last 12 months was not reported	32

TABLES

Chapter 2

Table 2.1: % of adults in each group experiencing any psychological / physical partner abuse in the last 12 months	11
--	----

Chapter 3

Table 3.1: Form of psychological abuse experienced since the age of 16.....	18
Table 3.2: Form of physical abuse experienced since the age of 16	20

Executive Summary

Introduction

The Scottish Crime and Justice Survey (SCJS) is a large-scale continuous survey measuring people's experience and perceptions of crime in Scotland, based on 13,000 in-home face-to-face interviews conducted annually with adults (aged 16 or over) living in private households in Scotland. The results are presented in a series of reports including this one, which provides information on partner abuse. The 2010/11 survey is the third sweep of the SCJS, with the first having been conducted in 2008/09.

Information on experience of partner abuse was collected through the self-completion section of the questionnaire, which was completed by 10,999 of the 13,010 respondents to the main SCJS questionnaire. Partner abuse as defined in this report includes psychological and physical forms of abuse.

This report identifies the extent of partner abuse, both since the age of 16 and in the last 12 months. It examines the nature and impact of partner abuse and explores the extent to which people or organisations were informed about the abuse, including contact with the police about the most recent / only incident experienced.

As the report demonstrates, while the risk of experiencing partner abuse as measured by the SCJS was similar for men and women, the nature and impact of the abuse differed. For example, the risk of experiencing either psychological or physical partner abuse over the course of their adult life was higher for women than for men. Over that time women experienced a greater number of forms of partner abuse on average than men and were more likely have experienced particular forms of physical abuse than men. The most recent / only incident of partner abuse against women was more likely to result in any physical or any psychological impact than the latest / only incident experienced by men.

The extent of partner abuse

Risk of partner abuse

16% of those who had at least one partner since the age of 16 had experienced partner abuse since that age. 3% of those who had a partner or were in contact with an ex-partner in the last 12 months experienced partner abuse in that period. This included 2% who said they had experienced *psychological* partner abuse in the last 12 months and 2% who said they had experienced *physical* partner abuse in the last 12 months. The risk of experiencing partner abuse was very similar to that measured in the SCJS 2009/10.

Variation in risk

The risk of experiencing partner abuse in the last 12 months was the same for women and men (3% each). Although the risk for men and women was the same in the recent past, the extent and nature of partner abuse differed over

the course of women and men's adult lives. For example, over the course of their adult life women experienced a greater number of forms of partner abuse on average than men and were more likely to have experienced particular forms of physical abuse than men (Chapter 3 provides more detail on the differences between men and women's experiences of partner abuse).

The risk of experiencing partner abuse in the last 12 months was 4% for those living in the 15% most deprived areas compared with 3% for those living in the rest of Scotland.

Number of incidents experienced

For 35% of those who had experienced partner abuse in the last 12 months this had happened once and for 11% it had happened twice. 5% who had experienced partner abuse in the last 12 months said there were too many incidents to count in that period and three in ten said they did not want to answer (19%) or they did not know / could not remember how many incidents they had experienced in the last 12 months (16%).

The nature and impact of partner abuse

Form of abuse experienced – psychological abuse

A higher percentage of women who had a partner since the age of 16 had experienced psychological abuse since that age than men (17% and 10% respectively). On average women who had a partner since the age of 16 had experienced between three and four forms of psychological abuse while men had experienced a little over two forms of psychological abuse.

The main forms of psychological abuse experienced included a partner behaving in a jealous or controlling way (9% of adults who had a partner since the age of 16 experienced this); repeatedly putting them down so they felt worthless (7%); threatening to hurt them (5%) or stopping them from seeing friends or relatives (5%).

Form of abuse experienced – physical abuse

14% of women who had a partner since the age of 16 experienced physical abuse since that age compared with 10% of men.

The main forms of physical abuse experienced included a partner throwing something at them (8% of adults who had a partner since that age experienced this); kicking, biting or hitting them (6%) or pushing or holding them down (6%).

Partner details

The majority (69%) of adults who had experienced either psychological or physical partner abuse had just one abusive partner in that time. 24% had more than one abusive partner since that age. The remainder said they did not know / could not remember how many abusive partners they had (2%) or did not wish to answer (5%).

In 61% of cases where partner abuse was experienced since the age of 16, the gender of the abusive partner was male compared with 37% where the gender of the abusive partner was female. Among those who had experienced partner abuse in the last 12 months, in the most recent / only incident, 54% of offenders were male and 39% female.

Perceptions of incidents

29% of those who had experienced physical partner abuse in the last 12 months considered what happened on the most recent / only occasion to be a crime compared with 21% of those who had experienced any psychological partner abuse.

Victims of partner abuse (as defined by the SCJS) did not necessarily consider themselves to be a victim of domestic abuse. 16% of adults who had a partner since the age of 16 said they had experienced psychological or physical partner abuse since that age compared with 8% who considered they had been a victim of domestic abuse (self-defined) since that age. Women (12%) were more likely to consider themselves to have been a victim of domestic abuse than men (3%).

Reporting incidents of partner abuse

Who was informed about the most recent / only incident

61% of those who had experienced partner abuse in the last 12 months had told at least one person or organisation about the most recent incident they experienced. This was most often a friend (37%) or a relative (20%).

29% did not tell anyone about the most recent incident of partner abuse experienced in the last 12 months. 42% of men told no-one about the most recent incident of abuse compared with 19% of women.

Reporting to the police

17% of those who had experienced partner abuse in the last 12 months said the police came to know about the most recent incident they experienced. This was higher for women (24%) than for men (9%).

1 Introduction

The Scottish Crime and Justice Survey (SCJS) is a large-scale continuous survey measuring adults' experience and perceptions of crime in Scotland. The survey is based on, annually, 13,010 in-home face-to-face interviews with adults (aged 16 or over) living in private households in Scotland.

The main aims of the SCJS are to:

- Provide a valid and reliable measure of adults' experience of crime, including services provided to victims of crime;
- Examine trends in the number and nature of crime in Scotland over time;
- Examine the varying risk of crime for different groups of adults in the population;
- Collect information about adults' experiences of, and attitudes to, a range of crime and justice related issues.

The main findings for 2010/11 are presented in a series of four reports. This report presents the key findings about partner abuse collected through the self-completion section of the survey. A Technical Report and User Guide are also available.¹

The 2010/11 survey is the third sweep of the SCJS, with the first having been conducted in 2008/09.

1.1 *Partner abuse in the SCJS*

The definition the police use in statistics of domestic abuse recorded by them is:

'... any form of physical, non-physical, or sexual abuse which takes place within the context of a close relationship, committed either in the home or elsewhere. This relationship will be between partners (married, co-habiting or otherwise) or ex-partners.'

Like the police definition, the SCJS focuses on abuse carried out by a partner.² It specifically includes abuse experienced since the age of 16. This is referred to throughout this report as partner abuse. It includes abuse undertaken by and against both men and women. It is not limited to on-going

¹ The 2009/10 SCJS Main Findings report and related publications are available on the 'publications' section of the Scottish Government website: <http://www.scotland.gov.uk/Topics/Statistics/Browse/Crime-Justice/Publications/publications>. The SCJS also has a dedicated website: <http://www.scotland.gov.uk/scjs>.

² A partner is defined in the questionnaire as any boyfriend, girlfriend, husband, wife or civil partner.

repeated abuse but may include one-off incidents. Partner abuse as defined in this report includes psychological and physical forms of abuse.

Information on experience of partner abuse was collected through the self-completion section of the questionnaire, which was completed by 10,999 of the 13,010 respondents to the main SCJS questionnaire (85%).

As the report demonstrates, while the risk of experiencing partner abuse as measured by the SCJS was similar for men and women, the nature and impact of the abuse differed. For example, over the course of their adult life women experienced a greater number of forms of partner abuse on average than men and were more likely to have experienced particular forms of physical abuse than men. The most recent / only incident of partner abuse against women was more likely to result in any physical or any psychological impact than the latest / only incident experienced by men.

In contrast to partner abuse, violent crime is identified in the SCJS as solely including physical violence. Recognising the difference in these definitions, comparisons are drawn at points in this report between partner abuse, as measured in the self-completion questionnaire, and violent crime, as measured through the victim form section of the main interview, to set partner abuse within the broader context of violent crime in Scotland.³

1.2 The structure of the report

This chapter has provided an overview of the SCJS 2010/11, specifically of the partner abuse section of the questionnaire.

Chapter 2 examines the risk and extent of partner abuse. It starts by establishing the proportion of adults who have had a partner since the age of 16 and in the last 12 months. The risk of partner abuse and the variation in that risk faced by different groups of adults who have had partners is then described and the number of incidents of partner abuse experienced is presented. The chapter ends by briefly examining links between partner abuse and stalking (a separate series of questions within the self-completion questionnaire).

Chapter 3 includes details about the nature and impact of the partner abuse. It starts by examining the forms of psychological and physical abuse experienced. It then examines the characteristics of offending partners and explores the presence of children in the household and the extent to which they became involved in the most recent / only incident in the last 12 months.

³ Comparisons are mainly drawn with physical partner abuse. Where this is not possible comparisons are made with all psychological and physical partner abuse. The text makes clear which type of partner abuse is being used in the comparison on each occasion. Annex 3, section A3.8.1 in the main report of the survey: '2009/10 Scottish Crime and Justice Survey: Main findings' provides a definition of violent crime:

<http://www.scotland.gov.uk/Topics/Statistics/Browse/Crime-Justice/Publications/publications>.

The impacts of this incident on the adult who had experienced it and their opinions of it are then examined. Finally the views of all adults on whether they had been the victim of domestic abuse are presented.

Chapter 4 provides information about reporting / informing others about incidents of abuse. Firstly it describes who the adult experiencing it told about the most recent / only incident of abuse in the last 12 months. It then focuses on reporting to the police, including whether the incident was reported at all; if it was not, why not and if it was, how satisfied the person was with how the police handled the matter.

Annex 1 contains additional data tables showing the percentage of adults who experienced partner abuse overall and in its various forms, since the age of 16 and in the last 12 months, by a range of demographic, experiential and area-related variables.

Annex 2 provides information on the method used in the SCJS 2010/11, specifically the self-completion questionnaire. This includes some information on the partner abuse questions in the questionnaire. It also provides information on the self-completion interview, and the weighting used in the analysis of the results.

2 The Extent of Partner Abuse

2.1 Summary

Risk of partner abuse

16% of those who had at least one partner had experienced partner abuse since age 16. 3% of those who had a partner or were in contact with an ex-partner in the last 12 months experienced partner abuse in the last 12 months. This included:

- 2% who said they had experienced *psychological* partner abuse in the last 12 months;
- 2% who said they had experienced *physical* partner abuse in the last 12 months.

The risk of experiencing partner abuse was the same as that measured in the SCJS 2009/10.

Variation in risk

The risk of experiencing partner abuse in the last 12 months was the same for women and men (3% each). Although the risk for men and women was the same in the recent past, the extent and nature of partner abuse differed over the course of women and men's adult lives. For example, over the course of their adult life women experienced a greater number of forms of partner abuse on average than men and were more likely to have experienced particular forms of physical abuse than men (Chapter 3 provides more detail on the differences between men and women's experiences of partner abuse).

The risk of experiencing partner abuse in the last 12 months was 4% for those living in the 15% most deprived areas compared with 3% for those living in the rest of Scotland.

Number of incidents experienced

For 35% of those who had experienced partner abuse in the last 12 months this had happened once and for 11% it had happened twice. 5% who had experienced partner abuse in the last 12 months said there were too many incidents to count in that period.

2.2 Introduction

This chapter looks at the extent of partner abuse among adults in Scotland. It covers:

- The overall risk of experiencing partner abuse, including the percentage who experienced at least one incident since the age of 16 as well as in the last 12 months;
- The variation in the risk of experiencing partner abuse in the last 12 months by different demographic, experiential and area-related characteristics;
- The frequency of partner abuse, looking at the number of incidents experienced in the last 12 months.

2.3 Presence of a partner

By definition, partner abuse can only occur if someone has a partner. Therefore all respondents to the survey were asked if they had a partner since the age of 16 and whether they had a partner or contact with an ex-partner in the last 12 months.

Almost all adults (94%) reported having had a partner at any time since the age of 16. And 78% of those who had a partner since the age of 16 reported having had a partner or contact with an ex-partner in the last 12 months.

Only those who have had a partner at all since the age of 16 were asked the questions on experience of partner abuse and therefore only this group of adults were included in the analysis for this report. In some instances the report presents data on partner abuse since the age of 16, while in others it focuses on abuse that happened in the last 12 months. Where abuse in the last 12 months is examined in more detail, information was collected about the most recent / only incident experienced in that period.

2.4 Risk of partner abuse

3% of those who had a partner or were in contact with an ex-partner in the last 12 months reported experiencing at least one form of partner abuse in that period.

- 2% of adults who had a partner or were in contact with an ex-partner in the last 12 months said they had experienced psychological abuse, including mental, emotional or financial abuse;
- 2% of adults who had a partner or were in contact with an ex-partner in the last 12 months had experienced physical abuse, including sexual abuse.

In order to provide a more general picture of the risk of partner abuse, adults were also asked whether they had experienced partner abuse since the age of 16 (Figure 2.1). Of those who had a partner since the age of 16:

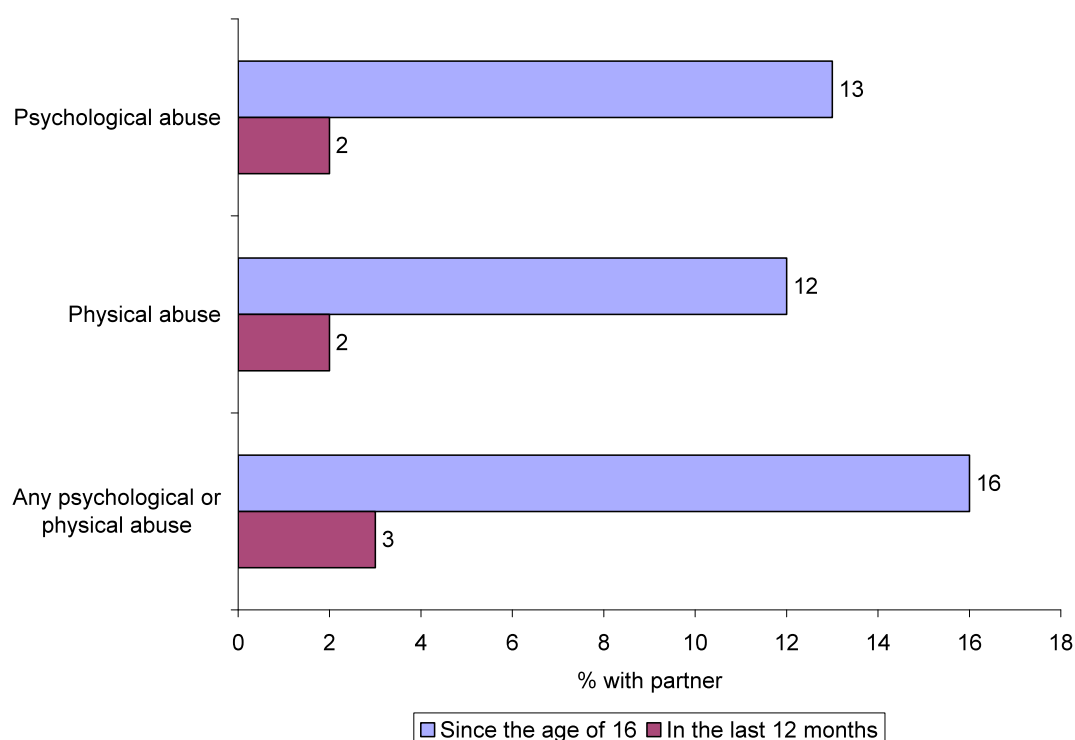
- Overall, 16% had experienced at least one incident of abuse (psychological or physical) from a partner since age 16;
 - 13% had experienced at least one incident of psychological abuse since age 16;
 - 12% had experienced at least one incident of physical abuse since age 16.

Figure 2.1: Risk of experiencing partner abuse

SCJS 2010/11.

Base: Adults who have had partner since the age of 16 (10,397); who have had a partner or been in contact with an ex-partner in last 12 months (7,652).

Variable name: *DA_1i*; *DA_1iii*.



9% of adults who had a partner since the age of 16 had experienced *both* psychological abuse and physical abuse from a partner since that age.

1% of adults who had a partner or contact with an ex-partner in the last 12 months had experienced *both* psychological and physical abuse in that period.

2.5 Risk of partner abuse – comparison over time

Section 2.4 identified that 3% of adults who had a partner or were in contact with an ex-partner in the last 12 months had experienced partner abuse in that time, as measured by the SCJS in 2010/11. This was the same number who said they had experienced partner abuse in the SCJS 2009/10.

Examining psychological and physical abuse separately:

- In 2010/11, 2% said they had experienced psychological abuse in the last 12 months compared with 3% in 2009/10. This apparent change is not statistically significant;
- In 2010/11, 2% said they had experienced physical abuse in the last 12 months compared with 2% in 2009/10.
- As measured in 2010/11, 16% of adults who had a partner since the age of 16 had experienced any psychological or physical abuse since that age which was the same as the percentage measured in 2009/10.
- In 2010/11, 13% said they had experienced psychological abuse since the age of 16 which was the same as the corresponding figure in 2009/10;
- In 2010/11, 12% said they had experienced physical abuse since the age of 16 which was the same as in 2009/10.

There has been no change in the risk of partner abuse between 2010/11 and 2009/10.

2.6 Variation in risk

This section explores how the risk of experiencing partner abuse varies on average among different groups of adults in Scotland. However, the analysis only presents simple one-to-one relationships based on demographic, experiential or area-related characteristics, rather than more complex inter-relationships that might be identified through statistical modelling. Further details of the percentages of different sub-groups who had experienced partner abuse are presented in Annex 1.

Among adults who had a partner or contact with an ex-partner in the last 12 months there was no difference between women and men in the proportion experiencing partner abuse (both 3%).

Although the risk for men and women was the same in the recent past, the extent and nature of partner abuse differed over the course of women and men's adult lives. For example, over the course of their adult life women experienced a greater number of forms of partner abuse on average than men and were more likely to have experienced particular forms of physical abuse than men. The most recent / only incident of partner abuse against women was more likely to result in any physical or any psychological impact than the latest / only incident experienced by men (Chapter 3 provides more detail on the differences between men and women's experiences of partner abuse).

The risk of experiencing partner abuse in the last 12 months was 4% for those living in the 15% most deprived areas compared with 3% for those living in the rest of Scotland.⁴

As Table 2.1 shows, the risk varied by age and victim status:

- Younger adults were more likely to have experienced abuse by a partner in the last 12 months, with rates varying from 8% of 16-24 year olds who had contact with a partner or ex-partner in that time to less than 0.5% of those aged 60 or older;
- Those who were victims of another crime (as measured in the main Scottish Crime and Justice Survey) were more likely to have experienced partner abuse (6%) than were those who had not been the victim of crime (2%).

Table 2.1: % of adults in each group who had experienced any psychological / physical partner abuse in the last 12 months

SCJS 2010/11.

Base: Adults in each group who have had a partner / had contact with an ex-partner in the last 12 months (adults 7,652).⁵

Variable name: *DA_1i*; *DA_1iii*.

Experienced partner abuse in last 12 months %	
GENDER	
Women	3
Men	3
AGE	
16-24	8
25-44	4
45-59	2
60 or over	0
VICTIM STATUS	
Victim	6
Non-victim	2
DEPRIVATION	
15% most deprived	4
Rest of Scotland	3
ALL	3

⁴ As measured by the Scottish Index of multiple deprivation (SIMD): <http://www.scotland.gov.uk/Topics/Statistics/SIMD>.

⁵ See accompanying tables for further details of base sizes for individual groups: <http://www.scotland.gov.uk/Topics/Statistics/Browse/Crime-Justice/Publications/publications>.

Table A1.1 in the Annexes shows the variations in risk were similar for partner abuse in the last 12 months and since the age of 16:

- 19% of women said they had experienced any psychological or physical abuse compared with 13% of men;
- The percentage of 16-24 year olds who had experienced any form of partner abuse since the age of 16 was lower than for those aged 25-44 (19% and 24% respectively). Thereafter the percentage decreased to 18% of 45-59 year olds and 6% of those aged 60 or over;
- 20% of those living in the 15% most deprived areas experienced partner abuse since the age of 16 compared with 16% of those living in the rest of Scotland.

2.7 Number of incidents experienced

Those who had experienced partner abuse in the last 12 months were asked how many incidents they had experienced in that time (Figure 2.2):

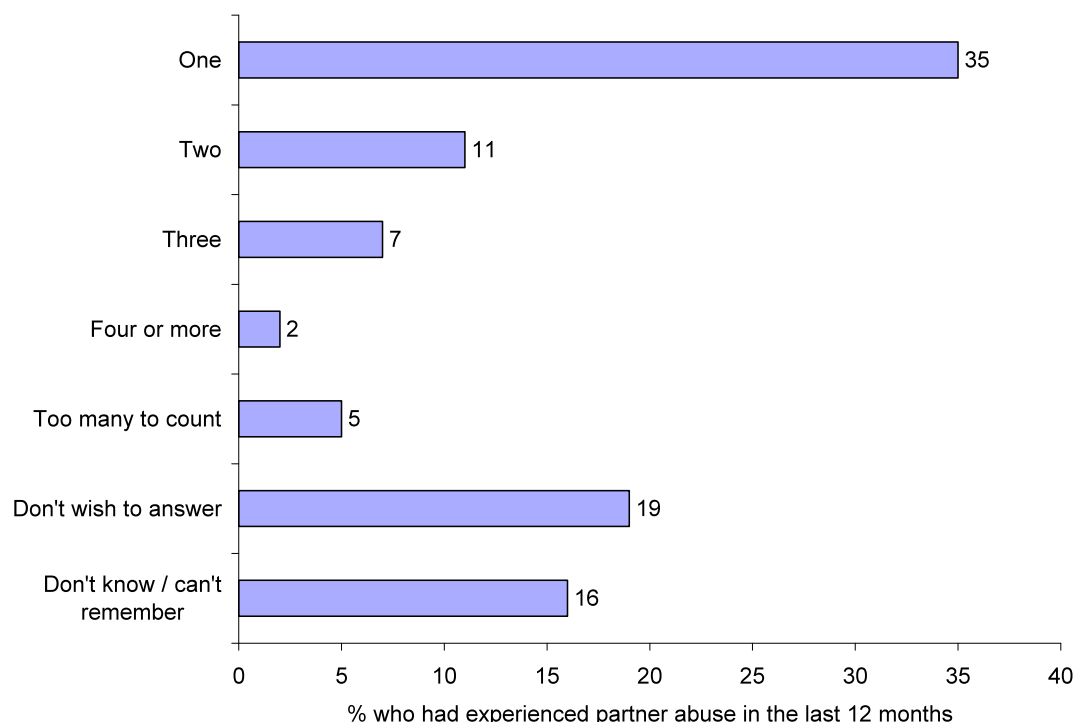
- 35% of adults who had experienced partner abuse in the last 12 months said the abuse occurred only once in that time;
- 11% said the abuse occurred twice in the last 12 months;
- For 7% of adults it had happened three times in that time, while for 2% it had happened four or more times;
- 5% said it had happened too many times to count;
- In addition, 36% did not answer the question saying they did not wish to answer (19%) or did not know / could not remember (16%).

Figure 2.2: Number of partner abuse incidents experienced in the last 12 months

SCJS 2010/11.

Base: Adults who had experienced partner abuse (psychological or physical) in the last 12 months (287).

Variable name: *DA_6*.



2.8 Stalking and harassment by (ex) partners

The self-completion questionnaire also asked about incidents experienced that involved stalking and harassment which, if perpetrated by a partner or ex-partner may be part of a course of conduct alongside other forms of partner abuse. Forms of stalking or harassment measured in the SCJS 2010/11 included: unwanted correspondence; obscene telephone calls; someone waiting outside or being followed.⁶

5% of all adults had experienced some form of stalking and harassment in the last 12 months.

- 32% of adults who had experienced partner abuse in the last 12 months, had also experienced stalking and harassment in the same period;
- 14% of adults who had experienced stalking or harassment in the last 12 months said the offender was their partner;

⁶ Stalking and harassment is reported more fully in a separate volume: 2009/10 Scottish Crime and Justice Survey: Sexual Victimization and Stalking: <http://www.scotland.gov.uk/Topics/Statistics/Browse/Crime-Justice/Publications/publications>.

- 32% of those who had experienced both partner abuse and stalking and harassment in the last 12 months, said the offender in the incident(s) of stalking and harassment was their partner.

3 The Nature and Impact of Partner Abuse

3.1 Summary

Form of abuse experienced – psychological abuse

A higher percentage of women who had a partner since the age of 16 had experienced psychological abuse since that age than men (17% and 10% respectively):

- On average women who had a partner since the age of 16 had experienced between three and four forms of psychological abuse since that age while men had experienced a little over two forms on average.

The main forms of psychological abuse experienced since the age of 16 included a partner behaving in a jealous or controlling way (9% of adults who had a partner since the age of 16 experienced this); repeatedly putting them down so they felt worthless (7%); threatening to hurt them (5%) or stopping them from seeing friends or relatives (5%).

Form of abuse experienced – physical abuse

14% of women who had a partner since the age of 16 experienced physical abuse since that age compared with 10% of men.

The main forms of physical abuse experienced included a partner throwing something at them (8% of adults who had a partner since that age experienced this); kicking, biting or hitting them (6%) or pushing or holding them down (6%).

Partner details

The majority (69%) of adults who had experienced either psychological or physical partner abuse had just one abusive partner in that time. 24% had more than one abusive partner since that age. The remainder said they did not know / could not remember how many abusive partners they had (2%) or did not wish to answer (5%).

Examining the gender of perpetrators:

- In 61% of cases where partner abuse was experienced since the age of 16, the gender of the abusive partner was male compared with 37% where the gender of the abusive partner was female;
- Among those who had experienced partner abuse in the last 12 months, in the most recent / only incident, 54% of offenders were male and 39% female.

Perceptions of incidents

29% of those who had experienced physical partner abuse in the last 12 months considered what happened on the most recent / only occasion to be a crime compared with 21% of those who had experienced any psychological partner abuse.

Victims of partner abuse (as defined by the SCJS) did not necessarily consider themselves to be a victim of domestic abuse. 16% of adults who had a partner since the age of 16 said they had experienced psychological or physical partner abuse since that age compared with 8% who considered they had been a victim of domestic abuse (self-defined) since that age.

- Women (12%) were more likely to consider themselves to have been a victim of domestic abuse than men (3%).

3.2 Introduction

This chapter looks in more detail at the specific nature of abuse experienced by adults and covers:

- The forms of psychological or physical partner abuse experienced since the age of 16;
- The number of abusive partners that adults who had experienced abuse since the age of 16 have had since that age;
- Whether the adult was living with their partner at the time of the most recent / only incident of abuse in the last 12 months and at the time of the interview;
- The gender of the offender in partner abuse experienced since the age of 16 and for the most recent / only incident in the last 12 months;
- The presence and involvement of children for the most recent / only incident experienced in the last 12 months;
- The impact of the most recent / only incident of psychological or physical partner abuse experienced in the last 12 months;
- Perceptions of whether the most recent / only incident of partner abuse experienced in the last 12 months was a crime or not and perceptions of experiences of domestic abuse more generally since the age of 16.

3.3 Form of abuse experienced – psychological abuse

As discussed in section 2.4, 13% of adults who had a partner since the age of 16 said they had experienced psychological abuse (mental, emotional or financial) from a partner since that age. This section investigates the particular forms of psychological partner abuse experienced since the age of 16 in more detail (Table 3.1).

- 9% of those who had a partner since the age of 16 said their partner had behaved in a jealous or controlling way and 7% said their partner repeatedly put them down so they felt worthless;
- 5% of those who had a partner since the age of 16 said their partner threatened to hurt them and 5% said their partner had stopped them from seeing friends or relatives;
- 3% of those who had a partner since the age of 16 said that their partner had stopped them from getting their fair share of household money or had taken money from them;
- Other psychological abuse included threats of force or violence against the adult, their current or a previous partner, other people close to them or pets and, in some cases, self-harm against the perpetrator. These were experienced by 3% or fewer adults who had a partner since the age of 16.

Among adults who had a partner since the age of 16, 17% of women experienced at least one form of psychological abuse listed compared with 10% of men.

Table 3.1 shows how the percentage who had experienced individual forms of psychological abuse varied by gender.

Table 3.1: Form of psychological abuse experienced since the age of 16
SCJS 2010/11.

Base: Adults who have had a partner since the age of 16 (adults 10,397;
women 5,989; men 4,408).

Variable name: *DA_1i*.

Form of psychological abuse:	Experienced since age 16 by:		
	Adults %	Women %	Men %
Behaved in a jealous or controlling way	9	12	6
Repeatedly put you down so that you felt worthless	7	10	3
Threatened to hurt you	5	7	2
Stopped you from seeing friends / relatives	5	6	3
Threatened to / attempted to / actually hurt themselves to make you do something / stop you doing something	3	4	2
Stopped you from having your fair share of household money / taken money from you	3	4	1
Threatened you with a weapon (e.g. ashtray or bottle)	3	3	2
Threatened to hurt your other / previous partner	2	3	1
Threatened to kill / attempt to kill themselves to make you do something / stop you from doing something	2	3	1
Threatened to kill you	2	3	1
Threatened to hurt someone / other living thing close to you (e.g. children, other family, friends or pets)	2	3	0
Forced you to view material which you considered to be pornography	0	0	0
EXPERIENCED AT LEAST ONE FORM OF PSYCHOLOGICAL ABUSE	13	17	10

As well as being more likely to experience psychological abuse than men, women who had a partner since the age of 16 were also more likely to have experienced more of the different forms of psychological abuse. On average women had experienced between three and four forms while men had experienced a little over two of the forms of psychological abuse.

3.4 Form of abuse experienced – physical abuse

As discussed in section 2.4, 12% of adults who had a partner since the age of 16 had experienced physical partner abuse (including sexual and other physical abuse) since that age. This section investigates the particular forms of physical partner abuse experienced since the age of 16 by adults who had a partner since that age in more detail (Table 3.2).

- 8% of those who had a partner since the age of 16 said they had something thrown at them since that age;
- 6% had been kicked, bitten or hit and the same percentage had been pushed or held down;
- 2% said a weapon had been used against them and 2% had been choked or strangled;
- 2% had experienced forced / attempted forced sexual intercourse;
- 1% had experienced forced / attempted forced other sexual activity.

Among those who had a partner since the age of 16, a higher percentage of women had experienced any physical partner abuse since that age (14%) than men (10%).

The actual forms of physical partner abuse experienced were different for men and women. Women were more likely to have experienced:

- Being pushed or held down (9% of women compared with 2% of men);
- Being choked / strangled / smothered (4% of women compared with less than 0.5% of men);
- Forced / attempted forced sexual intercourse (3% of women compared with less than 0.5% of men).

Same or similar percentages of women and men who had a partner since the age of 16 had experienced having something thrown at them (8% of women; and 8% of men) or having a weapon used against them (3% of women; 2% of men) since that age.

Table 3.2: Form of physical abuse experienced since the age of 16
SCJS 2010/11.

Base: Adults who have had a partner since the age of 16 (adults 10,397; women 5,989; 4,408 men).

Variable name: *DA_1iii*.

Form of physical abuse:	Experienced since age 16 by:		
	Adults %	Women %	Men %
Thrown something at you	8	8	8
Kicked, bitten or hit you	6	7	4
Pushed you or held you	6	9	2
Used a weapon against you	2	3	2
Choked or tried to strangle / smother you	2	4	0
Forced / tried to force you to have sexual intercourse when you did not want to	2	3	0
Forced you or tried to force you to take part in another sexual activity when you did not want to	1	1	0
EXPERIENCED AT LEAST ONE FORM OF PHYSICAL ABUSE	12	14	10

Like psychological abuse, women who had a partner since the age of 16 were also more likely to have experienced more of the forms of physical abuse since that age. On average men who had a partner since the age of 16 had experienced almost two forms of physical partner abuse since that age while women had experienced almost three on average.

3.5 Partner details

69% of adults who had experienced psychological or physical partner abuse since the age of 16 had one abusive partner. 24% had more than one abusive partner since that age. The remainder said they did not know / could not remember how many abusive partners they had (2%) or did not wish to answer (5%).

59% of those who had experienced at least one incident of partner abuse in the last 12 months were living with their partner at the time of the most recent incident. 47% of those who were living with their partner at the time of the most recent incident said they were still living with the perpetrator at the time they were interviewed; that is, the abuse was committed by their current partner.

3.5.1 Gender of the offender

The abusive partner was male in 61% of partner abuse experienced *since the age of 16* compared with 37% where the gender of the abusive partner was female (Figure 3.1).

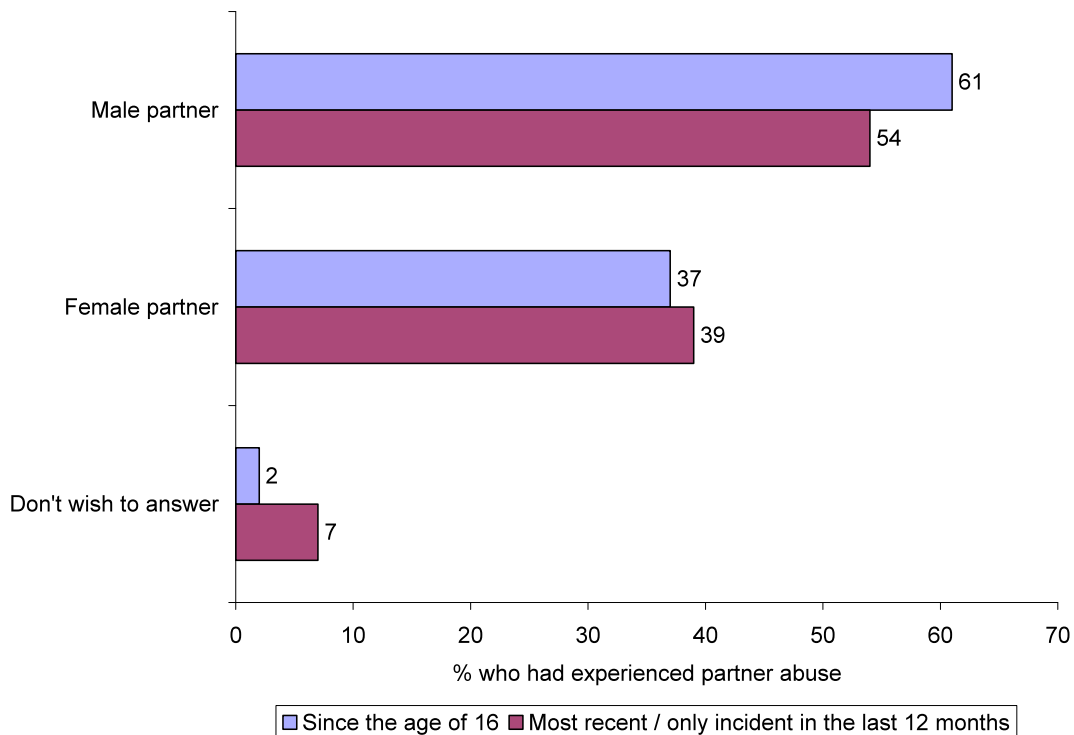
When considering the gender of the most recent / only abusive partner among those who had experienced partner abuse *in the last 12 months*, 54% were male and 39% female.

Figure 3.1: Gender of the offender(s) in any partner abuse experienced since the age of 16; in the most recent / only incident experienced in the last 12 months

SCJS 2010/11.

Base: Adults who had experienced partner abuse since the age of 16 (1,770); in the last 12 months (287).

Variable name: *DA_1vi*; *DA_7*.



In the majority of cases, those who had experienced partner abuse since the age of 16 were of the opposite gender to their abusive partners. Just 5% of men and 2% of women were of the same gender as their abusive partners. 8% of men who had experienced partner abuse in the last 12 months said their most recent / only abusive partner in that time was male and 3% of women said their most recent / only abusive partner in that time was female.

3.6 Presence of children

As pointed out in ‘Safer lives: Changed lives: A Shared Approach to Tackling Violence against Women in Scotland’,⁷ abuse against a partner can and does have a significant impact on children and young people. This includes where children and young people are directly or indirectly harmed through partner abuse experienced by a parent, usually though not exclusively, the mother.

Examining the presence and involvement of children in partner abuse in more detail:

- Over one third (35%) of those who had experienced partner abuse in the last 12 months had dependent children living with them at the time of the most recent / only incident;
 - Children were more likely to be living with women than men who had experienced partner abuse in the last 12 months (43% and 25% respectively);
- Of those who had experienced partner abuse in the last 12 months and who had children living with them, 69% said the children were present when the abuse occurred;
- In 61% of incidents where children were present, they saw or heard what happened. In 28% of incidents where children saw or heard what happened they became involved and in 7% of those incidents the child/children were hurt or injured during the incident.⁸

3.7 Impact of incidents

Respondents who had experienced partner abuse were asked about the effects of the most recent / only incident of abuse they experienced in the last 12 months. Separate questions were asked about psychological and physical impacts.

A higher percentage mentioned experiencing at least one psychological effect (56%) than mentioned experiencing at least one physical effect (48%).

Figure 3.2 examines the psychological effects of partner abuse in more detail:

- Psychological or emotional problems such as difficulty sleeping, nightmares, depression or low self esteem were the most frequently mentioned effects of the most recent / only incident of partner abuse,

⁷ A Scottish Government publication, the purpose of which is ‘to provide a shared understanding and approach which will guide the work of all partners to tackle violence against women in Scotland’:

<http://www.scotland.gov.uk/Publications/2009/06/02153519/0>.

⁸ The base size for the percentages reported where children saw or heard what happened is just 51, which is subject to large confidence intervals and should be used with caution.

mentioned by more than a third (36%) of those who had experienced partner abuse in the last 12 months;

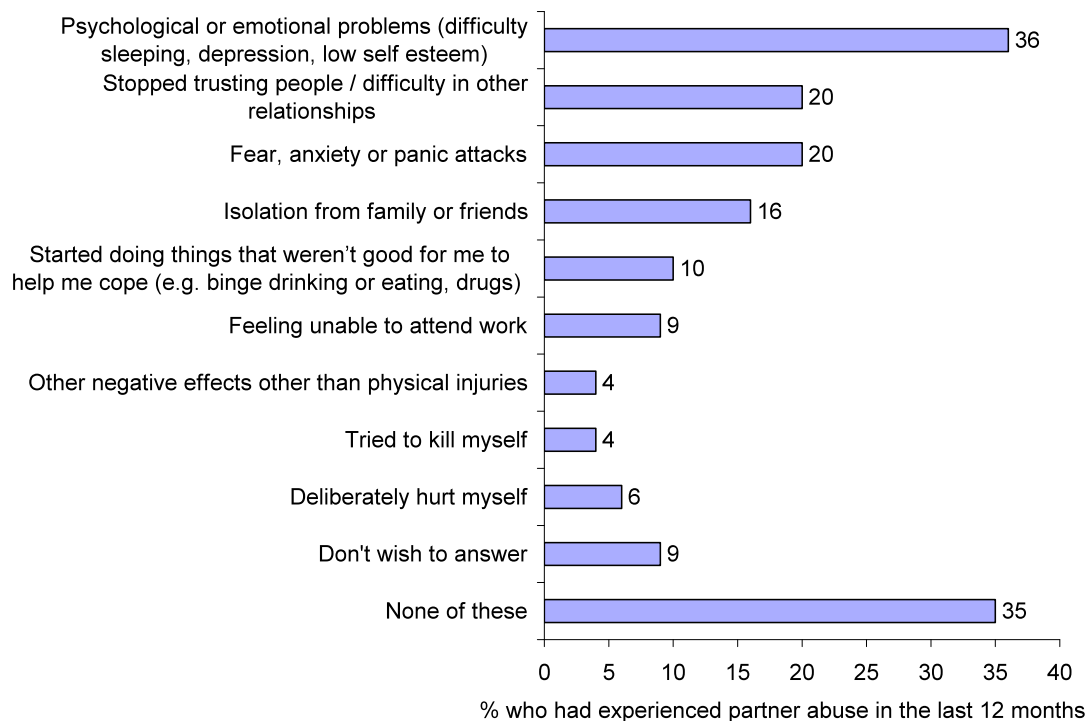
- Other psychological impacts included stopping trusting people / difficulties with other relationships (20%), fear, anxiety and panic attacks (20%) and feelings of isolation from family and friends (16%);
- 35% said they had experienced none of the psychological effects listed and a further 9% said they did not wish to answer this question.

Figure 3.2: Most common psychological impacts of most recent / only incident of partner abuse experienced in the last 12 months⁹

SCJS 2010/11.

Base: Adults who had experienced partner abuse (psychological or physical) in the last 12 months (287).

Variable name: *DA_9*.



⁹ All other psychological impacts were mentioned by 3% or fewer of those who had experienced partner abuse in the last 12 months and are not shown in Figure 3.2.

65% of women who had experienced partner abuse (psychological or physical) in the last 12 months reported at least one psychological impact of the most recent / only incident of abuse compared with 45% of men. Examining psychological impacts individually, women were more likely than men who had experienced partner abuse in the last 12 months to report impacts:

- Psychological or emotional problems such as difficulty sleeping, nightmares, depression or low self esteem (42% women; 28% men);
- Stopping trusting people or having difficulty with other relationships (26% women; 14% men);
- Fear, anxiety and panic attacks (28% women; 10% of men);
- Isolation from family and friends (21% women; 10% men).

Men (45%) were more likely than women (27%) to say they experienced none of the listed psychological effects.

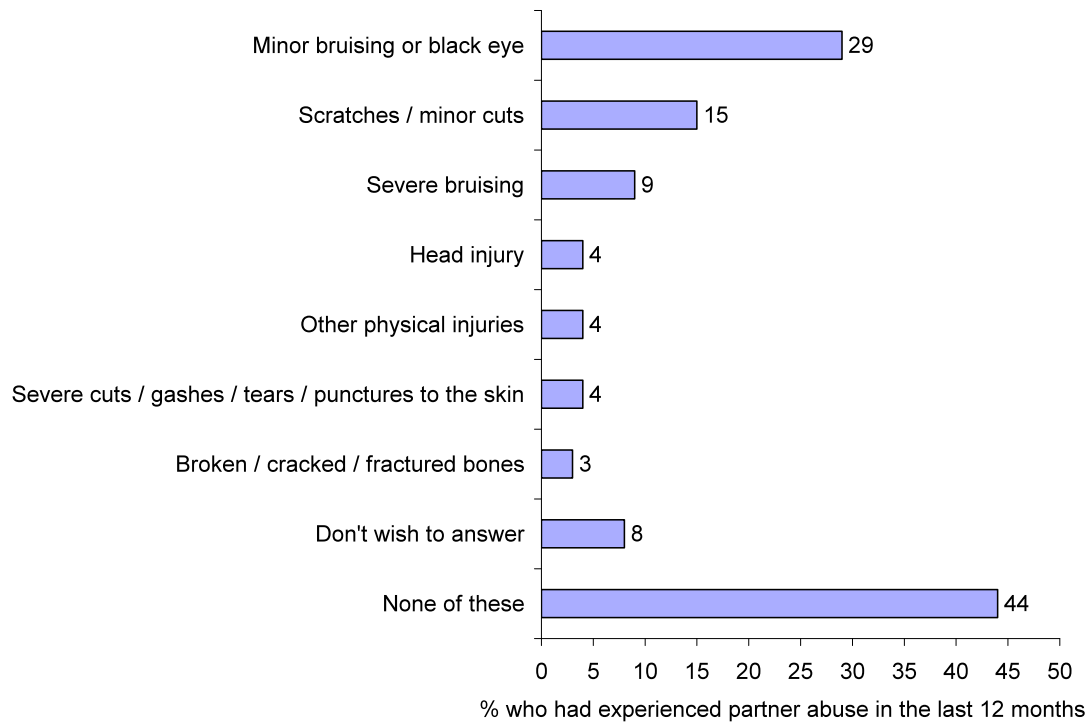
Figure 3.3 shows the physical effects of the most recent / only incident of partner abuse experienced in the last 12 months:

- 29% of those who had experienced partner abuse in the last 12 months suffered minor bruising or a black eye, 15% said they received scratches and 9% reported severe bruising;
- 44% said they suffered none of the physical impacts listed and a further 8% said they did not wish to answer this question.

Figure 3.3: Most common physical impacts of most recent / only incident of partner abuse experienced in the last 12 months¹⁰
SCJS 2010/11.

Base: Adults who had experienced partner abuse (psychological or physical) in the last 12 months (287).

Variable name: *DA_8*.



Partner abuse against women was more likely to result in physical impacts. 55% of women who had experienced partner abuse (psychological or physical) in the last 12 months reported at least one physical impact from the most recent incident compared with 44% of men.

3.8 Perceptions of incidents

Respondents who had experienced partner abuse in the last 12 months were asked whether they considered the abuse they experienced on the most recent occasion to be a crime, wrong but not a crime or just something that happens (Figure 3.4).

- For those who had experienced physical partner abuse in the last 12 months, 29% said that they thought the most recent incident was a crime, 23% said it was wrong but not a crime and 24% said their experience was just something that happens;

¹⁰ All other physical impacts were mentioned by fewer than 3% of those who had experienced partner abuse in the last 12 months and are not shown in Figure 3.3.

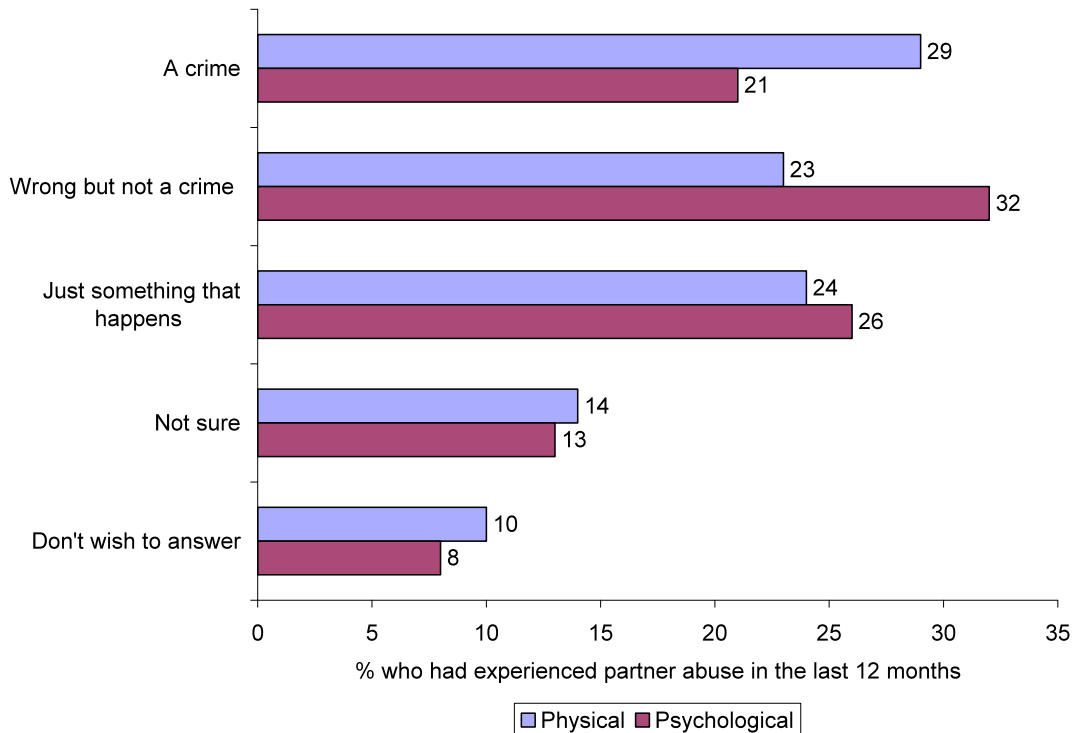
- For psychological partner abuse, 21% thought that the most recent incident was a crime, 32% said it was wrong but not a crime and 26% said it was just something that happens.

Figure 3.4: Whether most recent / only incident of partner abuse experienced in the last 12 months was considered a crime

SCJS 2010/11.

Base: Adults who had experienced physical or psychological partner abuse in the last 12 months (physical 163; psychological 220).

Variable name: *DA_19*; *DA_18*.



Women were more likely than men to view the most recent / only incident of partner abuse as a crime, particularly in relation to physical abuse:

- 44% of women thought the most recent incident of physical abuse they experienced in the last 12 months was a crime compared with 14% of men;
- 30% women said the most recent / only incident of psychological abuse they experienced in the last 12 months was a crime compared with 9% of men.

Men were more likely to say both forms of abuse were just something that happens:

- 37% of men said the most recent incident of physical abuse they experienced in the last 12 months was just something that happens compared with 11% of women;

- 28% of men said the same about the most recent incident of psychological abuse they experienced in the last 12 months compared with 24% of women.

3.9 Domestic abuse – perceptions of being a victim

To add further context to these findings, respondents who had ever had a partner were asked at the end of the partner abuse section whether they felt that they personally had ever been the victim of domestic abuse.¹¹

Fewer people identified themselves as being the victims of domestic abuse since the age of 16 (8%) than were identified in the survey as being victims of partner abuse since that age (16%) (Figure 3.5).

Notably a higher percentage of women than men identified themselves as being victims of domestic abuse (12% of women compared with 3% of men). As a result, the gap between the self-definition of being a victim of domestic abuse and the SCJS 2010/11 definition of partner abuse was narrower for women than for men.

- Women were more likely to have experienced partner abuse as defined by the SCJS 2010/11 since the age of 16 (19%) than they were to define themselves as a victim of domestic abuse since that age (12%);
- Men were over three times as likely to have experienced partner abuse as defined by the SCJS 2010/11 (13%) than to say they had been a victim of domestic abuse (3%).

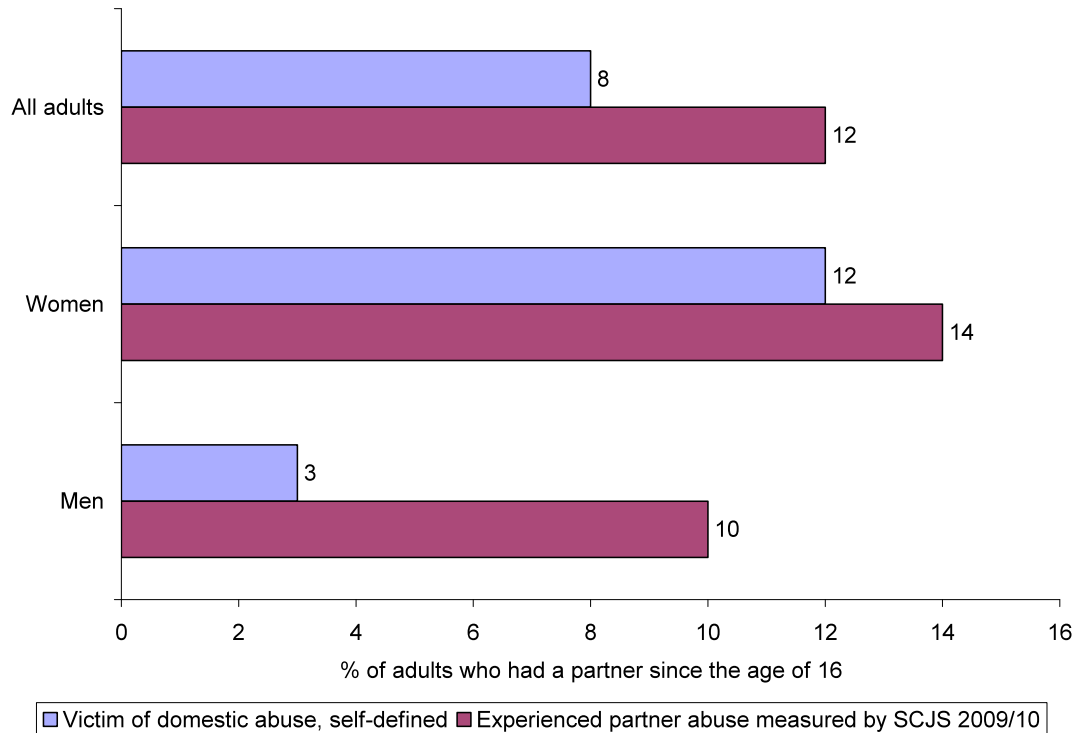
¹¹ The term domestic abuse was not defined in the question so respondents' answers were based on their understanding of this term. It is possible their self-definition of the term could have been influenced by the preceding questions on partner abuse, though it is not possible to determine this through the survey results.

Figure 3.5: % in each group who considered that they had been a victim of domestic abuse (self-defined) / experienced partner abuse since the age of 16 (SCJS 2010/11 definition)

SCJS 2010/11.

Base: Adults in each group who had a partner since the age of 16 (adults 10,397; women 5,989; men 4,408).

Variable names: *DA_21*; *DA_1i*; *DA_1iii*.



4 Reporting Incidents

4.1 Summary

Who was informed about the most recent / only incident

61% of those who had experienced partner abuse in the last 12 months had told at least one person or organisation about the most recent incident they experienced.

- This was most often a friend (37%) or a relative (20%).

29% did not tell anyone about the most recent incident of partner abuse experienced in the last 12 months.

- 42% of men told no-one about the most recent incident of abuse compared with 19% of women.

Reporting to the police

17% of those who had experienced partner abuse in the last 12 months said the police came to know about the most recent incident they experienced.

- This was higher for women (24%) than for men (9%).

4.2 Introduction

This chapter looks at reporting of the most recent / only incident of partner abuse in the last 12 months including:

- Who the adult experiencing the most recent / only incident in the last 12 months told about it;
- Whether the police came to know about the incident, whether it was recorded as a crime or not and reasons why the police did not come to know about it;
- Satisfaction with how the police handled the matter.

4.3 *Who was informed about the most recent / only incident*

Respondents who had experienced partner abuse in the last 12 months were asked who they had told about the most recent / only incident. 61% had told at least one person or organisation about the abuse they experienced in the last 12 months.

- 37% told a friend and 20% told a relative;
- 11% told the police;
- 11% told a doctor;
- 6% said they told someone at work;

- 5% contacted a counsellor / therapist;
- 4% contacted a woman's aid group; and
- 4% contacted a mental health or addiction service.

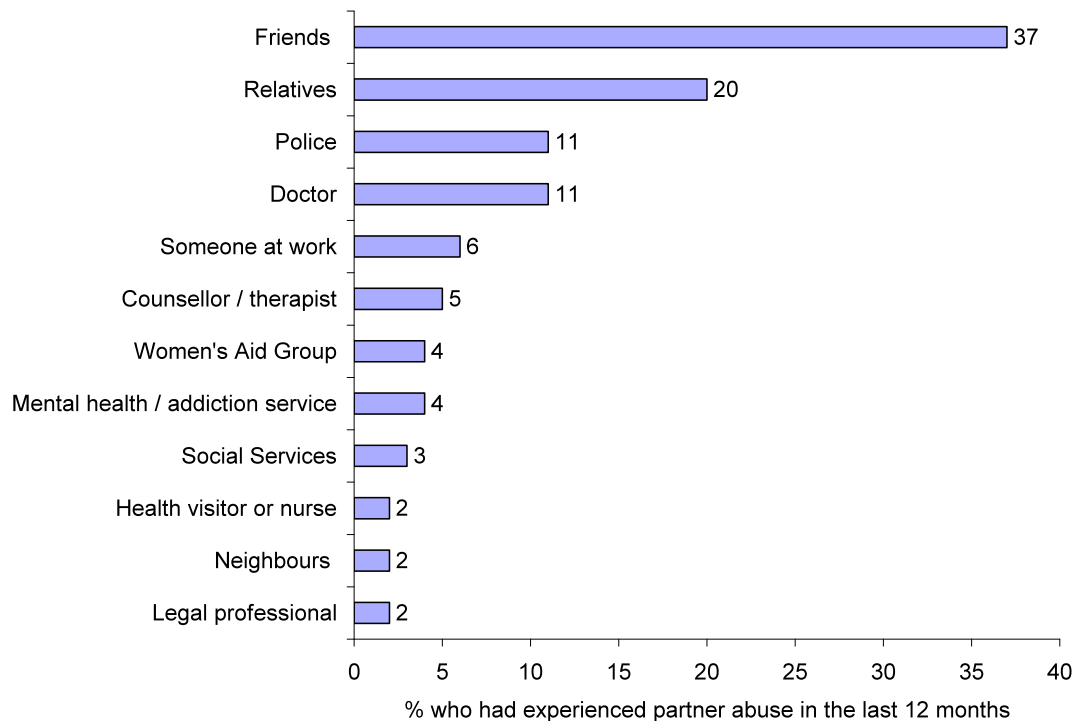
29% of those who had experienced partner abuse in the last 12 months did not tell any person or organisation about the most recent / only incident they experienced.

Figure 4.1: Most common people or organisations told about the most recent / only incident of partner abuse in the last 12 months¹²

SCJS 2010/11.

Base: Adults who had experienced partner abuse (psychological or physical) in the last 12 months (118).

Variable name: *DA_10*.



42% of male victims did not tell anyone about the abuse they experienced compared with 19% of female victims. Men were *less* likely to view what happened to them as a crime or to see themselves as a victim of domestic abuse than women were, which may have influenced this (sections 3.8 and 3.9 of the previous chapter).

¹² All other people or organisations were mentioned by fewer than 2% of those who had experienced partner abuse in the last 12 months and are not shown in Figure 4.1.

4.4 Reporting to the police

As well as asking about who was told about the incident, a separate question was asked specifically about whether the police came to know about the most recent / only incident of partner abuse experienced in the last 12 months.¹³

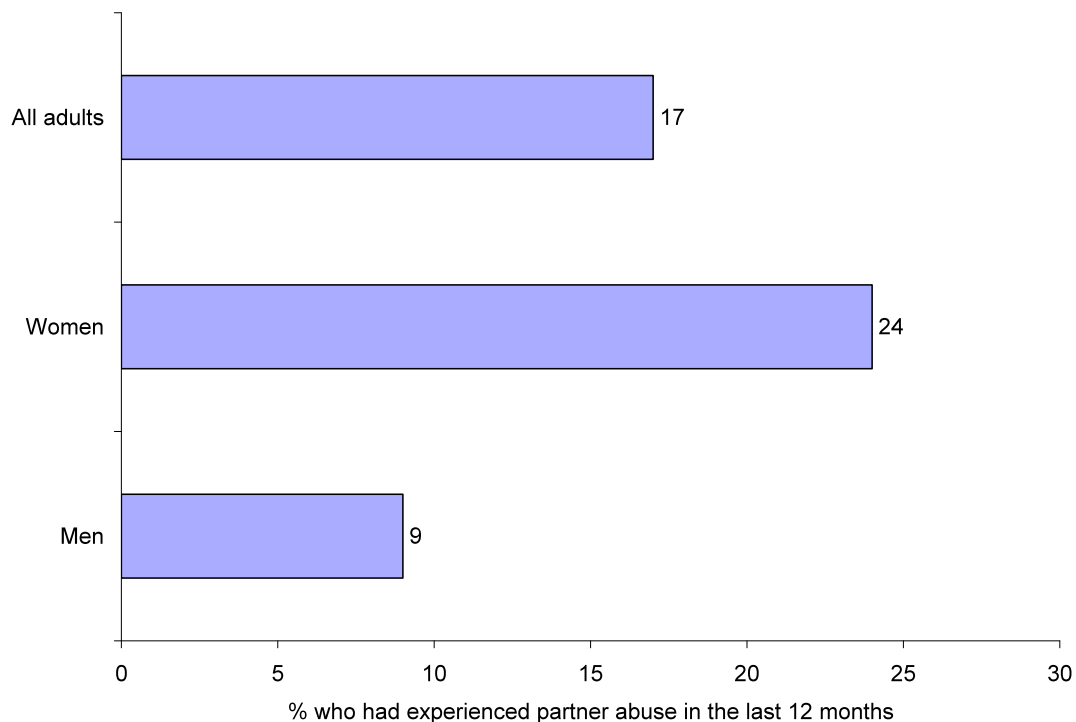
17% who experienced partner abuse in the last 12 months said the police did come to know about the most recent incident. This was higher among women than men (24% for women compared with 9% for men) (Figure 4.2).

Figure 4.2: Whether police came to know about the most recent / only incident of partner abuse experienced in the last 12 months

SCJS 2010/11.

Base: Adults in each group who had experienced partner abuse (psychological or physical) in the last 12 months (adults 287; women 175; men 112).

Variable name: *DA_11*.



¹³ Partner abuse reported to the police covers all incidents the police came to know about, including incidents reported by the respondent or someone else, and those where the police were there at the time of the incident or found out in some other way.

In the most recent / only incident of partner abuse experienced in the last 12 months that the police came to know about, 66% of those who had experienced it said it was recorded as a crime¹⁴.

4.5 Reasons for not informing the police

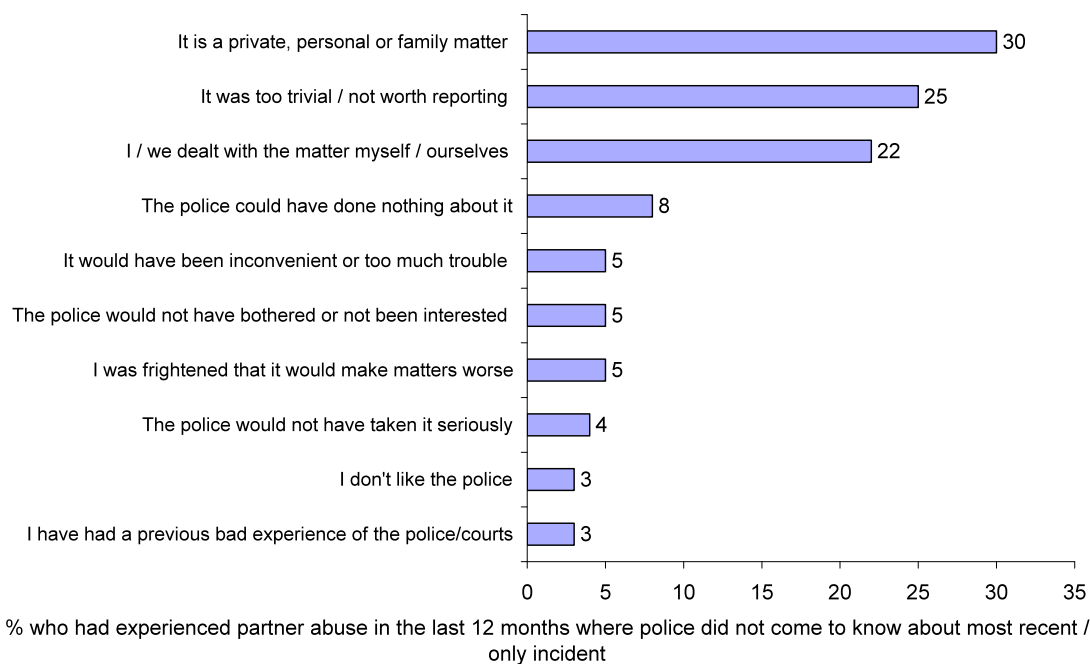
As Figure 4.3 shows, in cases where the police did not come to know about the most recent incident of partner abuse experienced in the last 12 months, reasons given for not reporting to the police included:

- 30% said it was a private, personal or family matter;
- 25% felt it was too trivial / not worth reporting; and
- 22% said they did not report it because they dealt with the matter themselves;

Figure 4.3: Most common reasons why the most recent / only incident of partner abuse experienced in the last 12 months was not reported¹⁵
SCJS 2010/11.

Base: Adults who had experienced partner abuse in the last 12 months where police did not come to know about the most recent / only incident (203).

Variable name: *DA_11i*.



¹⁴ The base size for responses to this question is low (61) and figures should be treated with caution.

¹⁵ All other reasons were mentioned by 2% or fewer of those who had experienced partner abuse in the last 12 months where the police did not come to know about the most recent / only incident. They are not shown in Figure 4.3.

4.6 *Level of satisfaction with the police*

60% of victims of partner abuse (which the police came to know about) were satisfied with the police response, including 36% who were very satisfied and 24% who were quite satisfied. 24% were dissatisfied with the police response, including 12% who were very dissatisfied¹⁶.

¹⁶ The base size for responses to this question is low (61) and figures should be treated with caution.

Annex 1: Data Tables – Experience of Partner Abuse

The following data tables provide data for some of the key measures of partner abuse. Notes on how to read and interpret these tables follow.

Notes:

1. 'Victim status' indicates whether a respondent was the victim of a crime as measured by the SCJS in 2010/11 (for further details of crimes included see Annex 3 of 2010/11 Scottish Crime and Justice Survey: Main Findings:
<http://www.scotland.gov.uk/Topics/Statistics/Browse/Crime-Justice/Publications/publications>).
2. 'Deprivation' is measured by the Scottish Index of Multiple Deprivation (SIMD). Breakdowns are for those living in the 15% most deprived areas and those living in the rest of Scotland. See the Scottish Government website for further information:
<http://www.scotland.gov.uk/Topics/Statistics/SIMD>.
3. Higher and lower estimates shown in Tables A1.3 and A1.4 estimates are derived using the 95% confidence intervals.
4. Definitions for table column headings are provided in the notes following the respective tables.

Table A1.1: % of adults who have had a partner since the age of 16 who had experienced partner abuse since that age by demographic variables SCJS 2010/11.

Base: Adults who have had a partner since the age of 16 (10,397).

Variable names: *DA1i*, *DA1iii*.

<i>Row percentages</i>	Experienced any psychological abuse	Experienced any physical abuse	Experienced any psychological / physical abuse	Experienced both psychological & physical abuse
AGE				
16-24	16	12	19	10
25-44	19	17	24	13
45-59	14	14	18	11
60 or over	5	4	6	3
MALE (TOTAL)	10	10	13	6
16-24	11	9	15	6
25-44	14	14	20	9
45-59	11	11	15	7
60 or over	2	3	4	2
FEMALE (TOTAL)	17	14	19	12
16-24	21	15	22	14
25-44	24	19	27	17
45-59	18	17	21	14
60 or over	7	5	7	4
VICTIM STATUS				
Victim	24	22	28	18
Non-victim	11	10	14	7
DEPRIVATION				
15% most deprived	17	15	20	13
Rest of Scotland	13	11	16	8
ALL	13	12	16	9

1. Partner abuse as measured by the SCJS in 2010/11 is any psychological or physical abuse undertaken against a man or a woman carried out by a male or female partner or ex-partner (including any boyfriend, girlfriend, husband, wife or civil partner).
2. Psychological partner abuse includes emotional, financial and other forms of psychological abuse (Table A1.5 shows the question used to identify psychological abuse and provides more detail of the forms of psychological abuse included).
3. Physical partner abuse includes sexual and other forms of physical force or violence (Table A1.7 shows the question used to identify physical abuse and provides more detail of the forms of physical abuse included).

4. Experienced any psychological / physical abuse means that a respondent had experienced at least one of the forms of psychological *or* at least one of the forms of physical partner abuse presented to respondents.
5. Experienced both psychological and physical abuse means that a respondent has experienced at least one of the forms of psychological *and* at least one of the forms of physical partner abuse presented to respondents.

Table A1.2: % of adults who have had a partner or contact with an ex-partner in the last 12 months who had experienced partner abuse in that time by demographic variables

SCJS 2010/11.

Base: Adults who have had a partner or contact with an ex-partner in the last 12 months (7,652). Variable names: *DA1i*, *DA1iii*.

<i>Row percentages</i>	Experienced any psychological abuse	Experienced any physical abuse	Experienced any psychological / physical abuse	Experienced both psychological and physical abuse
AGE				
16-24	6	5	8	3
25-44	3	2	4	1
45-59	2	1	2	1
60 or over	0	0	0	0
MALE (TOTAL)	2	2	3	1
16-24	5	6	8	3
25-44	3	2	3	1
45-59	2	1	2	0
60 or over	0	0	0	0
FEMALE (TOTAL)	3	2	3	1
16-24	7	3	8	3
25-44	3	3	4	2
45-59	2	1	2	1
60 or over	0	0	1	0
VICTIM STATUS				
Victim	5	4	6	2
Non-victim	2	1	2	1
DEPRIVATION				
15% most deprived	3	2	4	1
Rest of Scotland	2	2	3	1
ALL	2	2	3	1

1. Partner abuse as measured by the SCJS in 2010/11 is any psychological or physical abuse undertaken against a man or a woman carried out by a male or female partner or ex-partner (including any boyfriend, girlfriend, husband, wife or civil partner).
2. Psychological partner abuse includes emotional, financial and other forms of psychological abuse (Table A1.5 shows the question used to identify psychological abuse and provides more detail of the forms of psychological abuse included).
3. Physical partner abuse includes sexual and other forms of physical force or violence (Table A1.7 shows the question used to identify physical abuse and provides more detail of the forms of physical abuse included).

4. Experienced any psychological / physical abuse means that a respondent has experienced at least one of the forms of psychological *or* at least one of the forms of physical partner abuse presented to respondents.
5. Experienced both psychological and physical abuse means that a respondent has experienced at least one of the forms of psychological *and* at least one of the forms of physical partner abuse presented to respondents.

Table A1.3: Estimates of the number of adults in Scotland who had experienced partner abuse since the age of 16 by gender

SCJS 2010/11.

Base: Adults who have had a partner since the age of 16 (12,729).

Variable names: *DA_1i*; *DA_1iii*.

<i>Number of adults</i>	Best estimate (000s)	Higher estimate (000s)	Lower estimate (000s)
EXPERIENCED PSYCHOLOGICAL ABUSE (ALL)	542	578	507
Male	182	204	161
Female	360	387	333
EXPERIENCED PHYSICAL ABUSE (ALL)	485	516	453
Male	185	206	163
Female	300	323	276
EXPERIENCED PSYCHOLOGICAL OR PHYSICAL ABUSE (ALL)	660	700	621
Male	257	282	232
Female	403	432	375
EXPERIENCED BOTH PSYCHOLOGICAL AND PHYSICAL ABUSE (ALL)	367	395	339
Male	110	127	93
Female	257	279	234
EXPERIENCED NEITHER PSYCHOLOGICAL OR PHYSICAL ABUSE (ALL)	3,380	3,470	3,289
Male	1,648	1,710	1,587
Female	1,731	1,792	1,671

1. For definitions of terms used in this table refer to Table A1.1.
2. Numbers are rounded to the nearest thousand. They are derived by multiplying the prevalence rate by the population aged 16+. Population estimates were based on mid-2008 population estimate in Scotland produced by GROS of 4,254,966 adults aged 16+.

Table A1.4: Estimates of the number of adults who had experienced partner abuse in the last 12 months by gender

SCJS 2010/11.

Base: Adults who have had a partner or contact with an ex-partner in the last 12 months (9,471).

Variable name: *DA_1i;DA_1iii.*

<i>Number of adults</i>	Best estimate (000s)	Higher estimate (000s)	Lower estimate (000s)
EXPERIENCED PSYCHOLOGICAL ABUSE (ALL)	78	90	65
Male	33	41	24
Female	45	54	35
EXPERIENCED PHYSICAL ABUSE (ALL)	55	66	44
Male	28	36	19
Female	27	34	21
EXPERIENCED PSYCHOLOGICAL OR PHYSICAL ABUSE (ALL)	99	113	84
Male	46	56	35
Female	53	63	43
EXPERIENCED BOTH PSYCHOLOGICAL AND PHYSICAL ABUSE (ALL)	34	42	26
Male	15	21	9
Female	19	25	14
EXPERIENCED NEITHER PSYCHOLOGICAL OR PHYSICAL ABUSE (ALL)	3,069	3,156	2,982
Male	1,537	1,600	1,475
Female	1,532	1,587	1,476

1. For definitions of terms used in this table refer to Table A1.2.
2. Numbers are rounded to the nearest thousand. They are derived by multiplying the prevalence rate by the population aged 16+. Population estimates were based on mid-2008 population estimate in Scotland produced by GROS of 4,254,966 adults aged 16+.

Table A1.5: % of adults who had experienced each form of psychological abuse since the age of 16 by age and gender
 SCJS 2010/11. Base: Adults who had experienced partner abuse since the age of 16 (1,770). Variable name: *DA1i*.

Percentages	ADULTS					MALE					FEMALE				
	All	16-24	25-44	45-59	60+	All	16-24	25-44	45-59	60+	All	16-24	25-44	45-59	60+
Behaved in a jealous / controlling way e.g. restricting what you can do, who you can see, what you wear	55	70	56	51	41	44	60	46	40	23	62	76	64	58	49
Repeatedly put you down so that you felt worthless	42	37	43	44	38	22	18	23	24	10	55	48	57	57	50
Threatened to hurt you	30	18	30	34	36	16	7	16	18	21	39	25	39	43	42
Stopped you from seeing friends & relatives	31	35	31	31	21	25	37	24	25	10	34	34	36	34	26
Stopped you having your fair share of the household money / taken money from you	18	7	18	21	23	8	4	10	8	5	24	9	24	29	30
Threatened you with a weapon e.g. ashtray / bottle	16	7	18	17	17	13	5	13	14	17	18	9	21	18	16
Threatened to / attempted to / actually hurt themselves as a way of making you do something / stopping you doing something	16	23	14	18	11	12	14	10	13	13	19	28	17	20	11
Threatened to hurt your other / previous partner	14	14	16	14	11	9	8	9	9	5	18	19	20	17	14

TABLE CONTINUED ON NEXT PAGE ...

Table A1.5: (CONTINUED)

<i>Percentages</i>	ADULTS					MALE					FEMALE				
	All	16-24	25-44	45-59	60+	All	16-24	25-44	45-59	60+	All	16-24	25-44	45-59	60+
Threatened to kill / attempt to kill themselves as a way of making you do something / stopping you from doing something	14	16	14	13	11	9	6	10	9	12	16	23	16	15	11
Threatened to kill you	11	6	10	14	14	6	5	5	7	10	14	7	13	18	15
Threatened to hurt someone close to you, e.g. your children, family members, friends or pets	10	5	11	11	10	9	0	9	4	6	15	8	17	16	12
Forced you to view material which you considered to be pornography	1	1	1	2	2	1	1	1	0	0	2	0	2	3	3
EXPERIENCED ANY PSYCHOLOGICAL ABUSE	82	85	82	81	80	71	74	71	72	56	89	92	90	87	90
EXPERIENCED NO PSYCHOLOGICAL ABUSE	17	15	17	17	20	28	26	28	24	44	10	8	10	12	10

1. Psychological partner abuse is psychological abuse undertaken against a man or a woman carried out by a male or female partner or ex-partner (including any boyfriend, girlfriend, husband, wife or civil partner).
2. Any psychological abuse includes any of the emotional, financial and other forms of psychological abuse listed above and on the previous page in Table A1.5.

3. The question used to identify psychological partner abuse was: Since you were 16, has any partner or ex-partner ever done any of the following things to you? By partner, we mean any boyfriend or girlfriend, as well as a husband, wife or civil partner.

Table A1.6: % of adults who had experienced each form of psychological abuse since the age of 16 by victim status / area deprivation
SCJS 2010/11.

Base: Adults who had experienced partner abuse since the age of 16 (2,156).
Variable name: *DA1i*.

<i>Percentages</i>	ALL	VICTIM STATUS		DEPRIVATION	
		Victim	Non-victim	15% most depr.	Rest of Scot.
Behaved in a jealous / controlling way e.g. restricting what you can do, who you can see, what you wear	55	60	53	60	54
Repeatedly put you down so that you felt worthless	42	44	41	46	41
Threatened to hurt you	30	32	29	42	27
Stopped you from seeing friends & relatives	31	35	29	38	29
Stopped you having your fair share of the household money / taken money from you	18	20	17	25	16
Threatened you with a weapon, e.g. ashtray / bottle	16	19	15	25	14
Threatened to / attempted to / actually hurt themselves as a way of making you do something / stopping you from doing something	16	16	16	19	16
Threatened to hurt your other / previous partner	14	14	16	20	13
Threatened to kill / attempt to kill themselves as a way of making you do something / stopping you from doing something	14	16	13	17	13
Threatened to kill you	11	13	10	22	8
Threatened to hurt someone close to you, e.g. your children / family members, friends / pets	10	12	9	18	8
Forced you to view material which you considered to be pornography	1	1	2	2	1
EXPERIENCED ANY PSYCHOLOGICAL ABUSE	82	86	80	87	81
EXPERIENCED NO PSYCHOLOGICAL ABUSE	17	14	18	12	18

1. Psychological partner abuse is psychological abuse undertaken against a man or a woman carried out by a male or female partner or ex-partner (including any boyfriend, girlfriend, husband, wife or civil partner).
2. Psychological partner abuse includes any of the emotional, financial or other forms of psychological abuse listed above.
3. The question used to identify psychological partner abuse was: Since you were 16, has any partner or ex-partner ever done any of the following

things to you? By partner, we mean any boyfriend or girlfriend, as well as a husband, wife or civil partner.

Table A1.7: % of adults who had experienced each form of physical abuse since the age of 16 by age and gender
 SCJS 2010/11. Base: Adults who had experienced partner abuse since the age of 16 (1,770). Variable name: *DA1iii*.

Percentages	ADULTS					MALE					FEMALE				
	All	16-24	25-44	45-59	60+	All	16-24	25-44	45-59	60+	All	16-24	25-44	45-59	60+
Thrown something at you	48	46	48	49	44	57	56	54	60	68	42	39	45	43	34
Kicked, bitten, or hit you	36	30	36	39	38	33	30	34	33	35	38	29	38	42	39
Pushed you / held you down	35	27	35	39	34	13	7	13	14	15	50	40	51	55	43
Used a weapon against you, e.g. ashtray / bottle	13	6	14	15	14	12	6	12	15	18	14	6	16	15	13
Choked / tried to strangle / smother you	14	8	13	18	19	2	0	3	2	5	22	12	19	29	25
Forced you / tried to force you to have sexual intercourse when you did not want to	11	4	10	15	11	1	2	1	0	0	17	6	17	25	16
Forced you / tried to force you to take part in another sexual activity when you did not want to	4	7	4	4	3	1	3	0	0	2	7	9	7	7	3
EXPERIENCED ANY PHYSICAL ABUSE	73	67	72	78	75	72	64	72	73	85	74	69	72	82	71
EXPERIENCED NO PHYSICAL ABUSE	25	30	27	20	22	26	32	27	26	14	24	29	27	17	26

1. For notes relating to this table refer to Table A1.8.

Table A1.8: % of adults who had experienced each form of physical abuse since the age of 16 by victim status / area deprivation

SCJS 2010/11.

Base: Adults who had experienced partner abuse since the age of 16 (1,770).

Variable name: *DA1iii*.

<i>Percentages</i>	ALL	VICTIM STATUS		DEPRIVATION	
		Victim	Non-victim	15% most deprived	Rest of Scotland
Thrown something at you	48	52	46	52	47
Kicked, bitten, or hit you	36	40	35	44	34
Pushed you / held you down	35	38	34	43	34
Used a weapon against you, e.g. ashtray / bottle	13	16	12	22	11
Choked / tried to strangle / smother you	14	17	13	20	13
Forced you / tried to force you to have sexual intercourse when you did not want to	11	11	11	13	11
Forced you / tried to force you to take part in another sexual activity when you did not want to	4	6	4	7	4
EXPERIENCED ANY PHYSICAL ABUSE	73	76	72	76	73
EXPERIENCED NO PHYSICAL ABUSE	25	23	26	21	26

1. Physical partner abuse is physical abuse undertaken against a man or a woman carried out by a male or female partner or ex-partner (including any boyfriend, girlfriend, husband, wife or civil partner).
2. Physical partner abuse includes any of the sexual or other forms of physical force or violence listed above.
3. The question used to identify physical partner abuse was: Since you were 16, has any partner or ex-partner ever done any of the following things to you? By partner, we mean any boyfriend or girlfriend, as well as a husband, wife or civil partner

Table A1.9: % of adults who had experienced each form of psychological abuse since the age of 16 by age and gender
 SCJS 2010/11. Base: Adults who have had a partner since the age of 16 (10,397). Variable name: *DA_1i*.

<i>Percentages</i>	ADULTS					MALE					FEMALE				
	ALL	16-24	25-44	45-59	60+	All	16-24	25-44	45-59	60+	All	16-24	25-44	45-59	60+
Behaved in a jealous / controlling way e.g. restricting what you can do, who you can see, what you wear	9	13	13	9	2	6	9	9	6	1	12	17	17	12	4
Repeatedly put you down so that you felt worthless	7	7	10	8	2	3	3	5	3	0	10	11	15	12	4
Threatened to hurt you	5	3	7	6	2	2	1	3	3	1	7	5	11	9	3
Stopped you from seeing friends & relatives	5	7	7	5	1	3	5	5	4	0	6	8	10	7	2
Stopped you having your fair share of the household money / taken money from you	3	1	4	4	1	1	1	2	1	0	4	2	6	6	2
Threatened you with a weapon, e.g. ashtray / bottle	3	1	4	3	1	2	1	3	2	1	3	2	6	4	1
Threatened to / attempted to / actually hurt themselves as a way of making you do something / stopping you doing something	3	4	3	3	1	2	2	2	2	0	4	6	5	4	1
Threatened to hurt your other / previous partner	2	3	4	2	1	1	1	2	1	0	3	4	5	4	1

TABLE CONTINUED ON NEXT PAGE ...

Table A1.9: (CONTINUED)

<i>Percentages</i>	ADULTS					MALE					FEMALE				
	ALL	16-24	25-44	45-59	60+	All	16-24	25-44	45-59	60+	All	16-24	25-44	45-59	60+
Threatened to kill / attempt to kill themselves as a way of making you do something / stopping you from doing something	2	4	4	3	1	1	1	2	1	1	3	6	5	4	
Threatened to kill you	2	2	3	3	1	1	1	1	1	0	3	3	4	4	2
Threatened to hurt someone close to you, e.g. children / family members / friends / pets	2	2	3	3	1	0	0	1	1	0	3	3	5	4	1
Forced you to view material which you considered to be pornography	0	0	0	1	0	0	0	0	0	0	1	0	0	1	0
EXPERIENCED ANY PSYCHOLOGICAL ABUSE	13	16	19	14	5	10	11	14	11	2	17	21	24	18	7
EXPERIENCED NO PSYCHOLOGICAL ABUSE	85	82	79	83	93	89	87	84	88	96	81	77	74	79	91

1. Psychological partner abuse is psychological abuse undertaken against a man or a woman carried out by a male or female partner or ex-partner (including any boyfriend, girlfriend, husband, wife or civil partner).
2. Psychological partner abuse includes any of the emotional, financial and other forms of psychological abuse listed above and on the previous page in Table A1.9.
3. The question used to identify psychological partner abuse was: Since you were 16, has any partner or ex-partner ever done any of the following things to you? By partner, we mean any boyfriend or girlfriend, as well as a husband, wife or civil partner.

Table A1.10: % of adults who had experienced each form of psychological abuse since the age of 16 by victim status / area deprivation

SCJS 2010/11.

Base: Adults who have had a partner since the age of 16 (10,397).

Variable name: *DA1i*.

<i>Percentages</i>	ALL	VICTIM STATUS		DEPRIVATION	
		Victim	Non-victim	15% most depr.	Rest of Scot.
Behaved in a jealous or controlling way e.g. restricting what you can do, who you can see, what you wear	9	17	7	12	8
Repeatedly put you down so that you felt worthless	7	13	6	9	6
Threatened to hurt you	5	9	4	8	4
Stopped you from seeing friends & relatives	5	10	4	8	5
Stopped you having your fair share of the household money / taken money from you	3	6	2	5	3
Threatened you with a weapon, e.g. ashtray / bottle	3	5	2	5	2
Threatened to / attempted to / actually hurt themselves as a way of making you do something / stopping you from doing something	3	5	2	4	2
Threatened to hurt your other / previous partner	2	4	2	4	2
Threatened to kill / attempt to kill themselves as a way of making you do something / stopping you from doing something	2	4	2	3	2
Threatened to kill you	2	4	1	4	1
Threatened to hurt someone close to you, e.g. children / family members / friends / pets	2	3	1	4	1
Forced you to view material which you considered to be pornography	0	0	0	0	0
EXPERIENCED ANY PSYCHOLOGICAL ABUSE	13	24	11	17	13
EXPERIENCED NO PSYCHOLOGICAL ABUSE	85	74	87	80	85

1. Psychological partner abuse is psychological abuse undertaken against a man or a woman carried out by a male or female partner or ex-partner (including any boyfriend, girlfriend, husband, wife or civil partner).
2. Psychological partner abuse includes any of the emotional, financial and other forms of psychological abuse listed above.
3. The question used to identify psychological partner abuse was: Since you were 16, has any partner or ex-partner ever done any of the following

things to you? By partner, we mean any boyfriend or girlfriend, as well as a husband, wife or civil partner.

Table A1.12: % of adults who had experienced each form of physical abuse since the age of 16 by victim status / area deprivation
SCJS 2010/11.

Base: Adults who have had a partner since the age of 16 (10,397).

Variable name: *DA1i*.

<i>Percentages</i>	ALL	VICTIM STATUS		DEPRIVATION	
		Victim	Non-victim	15% most deprived	Rest of Scotland
Thrown something at you	8	15	6	10	7
Kicked, bitten, or hit you	6	11	5	9	5
Pushed you / held you down	6	11	5	9	5
Used a weapon against you, e.g. ashtray / bottle	2	5	2	4	2
Choked or tried to strangle / smother you	2	5	2	4	2
Forced you or tried to force you to have sexual intercourse when you did not want to	2	3	2	3	2
Forced you / tried to force you to take part in another sexual activity when you did not want to	1	2	0	1	1
EXPERIENCED ANY PHYSICAL ABUSE	12	22	10	15	11
EXPERIENCED NO PHYSICAL ABUSE	86	76	88	83	87

1. Physical partner abuse is physical abuse undertaken against a man or a woman carried out by a male or female partner or ex-partner (including any boyfriend, girlfriend, husband, wife or civil partner).
2. Physical partner abuse includes any of the sexual or other forms of physical force or violence listed above.
3. The question used to identify physical partner abuse was: Since you were 16, has any partner or ex-partner ever done any of the following things to you? By partner, we mean any boyfriend or girlfriend, as well as a husband, wife or civil partner.

Annex 2: Self-completion Questionnaire Method

Crime and victimisation surveys have been carried out in Scotland since the early 1980s. The geographical coverage, sample size, method and reference period have varied across these surveys. The current survey was launched in April 2008 as the Scottish Crime and Justice Survey (SCJS) and it represented a major shift in design, methodology and sample size from previous surveys.

The design of the 2010/11 SCJS was the same as the 2009/10 survey. The self-completion section of the questionnaire for partner abuse remains the same as the 2009/10 questionnaire (section A2.4). All respondents were asked to answer the self-completion section of the questionnaire – there were no limits on age.¹⁷

This annex provides more detail about aspects of the self-completion section questionnaire and specifically about the questions covering partner abuse. Details are also included about the self-completion interview and the weighting used on the data. Some features of the data in this section of the self-completion questionnaire are also highlighted.

Further information about the design of the SCJS is contained in Annex 2 of 2010/11 Scottish Crime and Justice Survey: Main Findings and in the accompanying Technical Report to the survey.¹⁸

A2.1 The self-completion interview

Interviews for the SCJS 2010/11 were conducted in the respondent's home using Computer Assisted Personal Interviewing (CAPI) and, for more sensitive questions in the self-completion section of the questionnaire such as those reported here, Computer Assisted Self-completion Interviewing (CASI). Interviews lasted 36 minutes on average in total, with the self-completion section taking just over 10 minutes on average to complete.

The results included in this report are based on interviews conducted by TNS-BMRB between 01 April 2010 and 31 March 2011. Respondents to the SCJS had the option of refusing to participate in the self-completion section which means this part of the questionnaire was not completed by all 13,010 respondents to the main survey. 10,999 respondents agreed to participate in the self-completion questionnaire, a response rate of 85%.

¹⁷ The 2006 Scottish Crime and Victimization Survey (SCVS) only asked respondents aged 16 – 59 to answer the self-completion section of the questionnaire and the British Crime Survey (BCS) retains this design.

¹⁸ Scottish Government website:

<http://www.scotland.gov.uk/Topics/Statistics/Browse/Crime-Justice/Publications/publications>.

The majority of respondents who answered the self-completion questions used the touch sensitive tablet PC on their own without any help from the interviewer (67%). Just over a third of respondents (33%) asked the interviewer to enter their answers for them. A dislike of computers was the most common reason why respondents asked the interviewer to enter their answers for them (mentioned by 66%), while running out of time was the most common reason given for respondents refusing to complete it (mentioned by 52%). Only 6% of respondents refused to complete the self-completion questionnaire because of worries about confidentiality.¹⁹

As interviewing for the SCJS was continuous over the course of 12 months from April 2010 to the end of March 2011, the reported measure of ‘in the last 12 months’ covers a 12 month period which varies according to the date of the interview. More information on the survey ‘reference period’ is available in the Technical Report.

A2.2 Non-response to the self-completion section

Table A2.1 compares the profile of respondents who answered the self-completion section of the questionnaire (including those where the interviewer completed the questionnaire) and those who did not answer it:

- Equal proportions of males and females answered the self-completion section (85%);
- The proportions of respondents who answered the self-completion section decreased as age increased (for example, 90% of 16-24 year olds answered the self-completion section compared with 80% of those aged 60 or over);
 - Similar proportions of males and females within age groups answered the self-completion section;
- There were only minor differences in response rates between those who had been a victim of crime, as identified by the SCJS 2010/11 and those who had not (84% and 86% respectively).

¹⁹ Data shown in this paragraph are unweighted.

Table A2.1: % of respondents overall and in selected sub-groups who did and who did not answer the self-completion section ²⁰
SCJS 2010/11

Base: All respondents (13,010)

<i>Row percentages</i>	Self-completion %	No self-completion %
AGE		
16-24	89.7	10.3
25-44	86.9	13.1
45-59	87.2	12.8
60+	79.7	20.3
MALE (TOTAL)	84.7	15.3
16-24	88.5	11.5
25-44	84.8	15.2
45-59	86.6	13.4
60+	82.2	17.8
FEMALE (TOTAL)	84.5	15.5
16-24	90.6	9.4
25-44	88.4	11.6
45-59	87.6	12.4
60+	77.8	22.2
VICTIM STATUS		
Victim	84.2	15.8
Non-Victim	86.2	13.8
ALL	84.5	15.5

A2.3 Questionnaire content

The SCJS questionnaire has a complex structure, but basically consists of three elements:

- The **main questionnaire** consists of a set of core modules asked of the whole sample, including demographics; and a set of **quarter-sample modules**, containing questions on a variety of topics;
- A **victim form questionnaire** which collects details about the incidents a respondent may have experienced during the reference period. This victim form can be repeated up to five times. The number

²⁰ Data displayed in the table are unweighted.

of victim forms completed depends on the number and nature of incidents respondents had experienced;

- A **self-completion questionnaire** covering sensitive issues. All respondents were asked to complete a self-completion questionnaire, but had the option to refuse this due to the sensitive nature of the questions.

The questions on partner abuse were included in the self-completion section. Respondents were first asked whether they had a partner (defined as a husband, wife, boyfriend, girlfriend or civil partner) since the age of 16 and in the last 12 months, or had contact with an ex-partner in the last 12 months. Those who had a partner were also asked if had lived with a partner since the age of 16 and in the last 12 months. Those who had at least one partner since the age of 16 were shown lists of a range of psychological and physical forms of abuse and asked if a partner or ex-partner had done any of those things to them. If so they were asked when these things had happened and the gender of the perpetrator(s). Where they had experienced more than one form of abuse since the age of 16 they were asked how many different partners had done this.

Where abuse had happened in the last 12 months, more questions were asked about the most recent / only incident. These included a series of questions about whether children were affected by the abuse. Other questions included the gender of the perpetrator; the physical and psychological consequences of the abuse; whether the respondent informed other people or organisations about the incident and specifically whether the police came to know about the incident. Information was gathered on whether the respondent was living with the perpetrator at the time of the incident and whether they were living with them at the time of the interview.

Respondents' opinions of the abuse were then collected. First, those who said they had experienced at least one of the forms of psychological or physical abuse listed in the questionnaire were asked whether they thought the most recent / only incident was a crime, wrong but not a crime or just something that happens. Subsequently all respondents, regardless of whether they had experienced any of the listed forms of abuse, were asked whether they thought they had ever been the victim of domestic abuse (a definition for domestic abuse was not provided).

A2.4 Measuring partner abuse

The SCJS measures both the number of crimes and the proportion of the population who are victims of crime.

Partner abuse was included in the overall SCJS crime statistics (reported in the Main Findings report) only if a respondent reported an incident in the victim form screener section which was then followed up in the victim form and subsequently assigned an in-scope offence code.²¹ There was no victim form screener question that asked specifically about incidents of ‘partner abuse’, though a question asking respondents whether they had experienced any form of violence from another household member was included.

When completing the self-completion questionnaire, respondents were asked if they had already mentioned the incident being recorded in the victim form. If an incident of partner abuse had been mentioned in the victim form then details from this were incorporated into the self-completion data and are included in this report.²²

A2.5 Disclosure of sensitive information

Given the sensitive nature of the questions, a separate ‘don’t wish to answer’ button was provided at the top of the screen at every question in the self-completion section of the questionnaire. At the start of the questions on partner abuse, respondents were reminded that they could skip such sensitive questions that they did not want to answer:

The questions may seem personal but it is very important in helping us understand more about these types of crime, which can affect both men and women. If the questions upset you in any way you can just pass over them by pressing ‘Don’t wish to answer’. However, we hope you will continue to the end.

For the two initial screening questions which established whether a respondent had experienced abuse, 2% of respondents did not wish to answer the question about psychological abuse and 1% did not wish to answer the question about physical abuse (Table A2.2). Of those who said they had experienced either form of abuse, most respondents went on to answer the follow-up questions although for most of the questions a small number of respondents did refuse to provide information.

²¹ The 2009/10 Scottish Crime and Justice Survey: Main Findings provides details of the all SCJS crime measure.

²² See section 5.4 of the Technical Report for more details of how this was done.

Table A2.2 provides more details of questions where higher numbers of respondents used the ‘don’t wish to answer’ button.

Table A2.2: Number and % of respondents who used the ‘don’t wish to answer’ button at selected questions in the partner abuse section of the SCJS 2010/11 ²³

SCJS 2010/11.

Base: Various (see table).

Question	Base	Used ‘don’t wish to answer’ button	
		Number	%
Experienced psychological abuse	Had partner since aged 16	150	1
Experienced physical abuse	Had partner since aged 16	144	1
Consider self victim of domestic abuse (ever)	Had partner since aged 16	9	1
No. of abusive partners since age 16	Experienced abuse since aged 16	86	5
No. of abuse incidents in last 12 months	Experienced abuse in last 12 months	69	19
Physical effects of abuse	Experienced abuse in last 12 months	21	8
Gender of offender	Experienced abuse since aged 16	37	2

A2.6 A note on the data

There are two features of the data for partner abuse which users should be aware of (in addition to the numbers of respondents refusing to answer certain questions (section A2.5)). These two features are discussed in turn below.

A2.6.1 Partner abuse in the last 12 months

As highlighted in section 2.3, partner abuse as defined by the SCJS could only occur where the respondent had ever had a partner since they were aged 16. A set of questions *prior* to the section on partner abuse included a questions about whether the respondent had a partner since the age of 16 (REL0) or contact with a partner or ex-partner in the last 12 months (REL0i). If respondents had not had a partner since the age of 16, then the questions on partner abuse were not asked, as by definition, they could not have experienced partner abuse since that age.

²³ For all other questions where the option was used at all, fewer than 50 respondents (unweighted) used the ‘don’t wish to answer’ button.

Questions on experience of partner abuse in the last 12 months were asked if the respondent had experienced partner abuse since the age of 16 and were not based on the question which asked if they had had contact with a partner or ex-partner in the last 12 months. Therefore, it was possible for respondents to say they had experienced either psychological or physical abuse by a partner *in the last 12 months*, while answering that they had not had a partner or contact with an ex-partner *in the last 12 months* at question REL0i.²⁴ 56 respondents had done this and they are retained in the partner abuse analysis.

For simplicity, the base text for figures and tables including those 56 respondents showing the percentage who had experienced partner abuse in the last 12 months is referred to as ‘all who have had partner or been in contact with an ex-partner in the last 12 months’. Accompanying text is treated in the same way.

A2.6.2 Psychological effects of partner abuse

Question DA_9 asks respondents who experienced partner abuse about the psychological impacts of the most / recent only incident of partner abuse they had experienced. Those saying they had previously provided details of the partner abuse in the victim form were not asked all of the questions in the partner abuse section, including question DA_9.²⁵ Instead the data they had previously provided in the victim form was edited into partner abuse data to avoid question repetition and reduce the burden on respondents.

However, compared to the question in the victim form, question DA_9 included options more tailored to partner abuse (in contrast to the more general options on emotions experienced after an incident of crime that was asked in the victim form). This meant that answers could not be edited from the victim form question into question DA_9. As a result the number of respondents who answered this question was reduced by 13 (Figures 3.2 and 3.3).

A copy of the questionnaire providing details of the questions highlighted above is available on the Scottish Government survey website.²⁶

A2.7 Weighting

The results obtained in the SCJS 2009/10 were weighted to correct for the unequal probability of selection for interview caused by the sample design and for differences in the level of response among groups of individuals.

²⁴ A CAPI logic check was not included in the script to avoid confusing respondents self-completing the questionnaire.

²⁵ In the SCJS 2009/10, 87 respondents provided details of the latest / most recent incident of partner abuse they had experienced in the victim form.

²⁶ <http://www.scotland.gov.uk/Topics/Statistics/Browse/Crime-Justice/Publications/publications>.

In view of the reduced response to the self-completion section (84% of respondents to the main survey answered the self-completion section) additional weighting was necessary for use when analysing this sub-sample. The self-completion weights were calculated in a similar way to the main individual and household weights but based only on respondents who had answered the self-completion section of the questionnaire.²⁷ The individual weight was applied to all of the questions included in this report as they all related to the experiences and opinions of individuals.²⁸

²⁷ Further detail of the weighting used in the survey and an explanation of when to use the different weights is provided in the accompanying Technical Report.

²⁸ Data is available on the UK Data Archive's website at: <http://www.data-archive.ac.uk/>.

A NATIONAL STATISTICS PUBLICATION FOR SCOTLAND

Official and National Statistics are produced to high professional standards set out in the Code of Practice for Official Statistics at <http://www.statisticsauthority.gov.uk/assessment/code-of-practice/code-of-practice-for-official-statistics.pdf>. Both undergo regular quality assurance reviews to ensure that they meet customer needs and are produced free from any political interference.

Statistics assessed, or subject to assessment, by the UK Statistics Authority carry the National Statistics label, a stamp of assurance that the statistics have been produced and explained to high standards and that they serve the public good.

Further information about Official and National Statistics can be found on the UK Statistics Authority website at www.statisticsauthority.gov.uk.

This report has been produced by researchers from the respected independent social research organisation TNS-BMRB working with Scottish Government Researchers in the Justice Analytical Services Department.

UK Statistics Authority - Assessment Report

Under the provisions of the Statistics and Registration Service Act 2007, the UK Statistics Authority has a statutory function to assess sets of statistics against the Code of Practice for Official Statistics, with a view to determining whether it is appropriate for the statistics to be designated, or retain their designation, as National Statistics. Designation as National Statistics means that statistics are deemed to be compliant with the Code of Practice.

The statistics published from the *Scottish Crime and Justice Survey* have been assessed by the UK Statistics Authority and have been confirmed as National Statistics. The Scottish Government reported back to the Authority in January 2010 on some specific enhancements it was to make, as identified by the Authority. The Assessment Report, which was published in September 2009, can be accessed via the following link:

<http://www.statisticsauthority.gov.uk/assessment/assessment-reports/assessment-report-12---scottish-crime-and-justice-survey--15-september-2009.pdf>

Table A1.11: % of adults who had experienced each form of physical abuse since the age of 16 by age and gender
 SCJS 2010/11. Base: Adults who have had a partner since the age of 16 (10,397). Variable Name: *DA1iii*.

<i>Percentages</i>	ADULTS					MALE					FEMALE				
	All	16-24	25-44	45-59	60+	All	16-24	25-44	45-59	60+	All	16-24	25-44	45-59	60+
Thrown something at you	8	8	11	9	3	8	8	11	9	3	8	9	12	9	2
Kicked, bitten, or hit you	6	5	9	7	2	4	4	7	5	1	7	6	10	9	3
Pushed you / held you down	6	5	8	7	2	2	1	3	2	1	9	9	14	11	3
Used a weapon against you, e.g. ashtray / bottle	2	1	3	3	1	2	1	2	2	1	3	1	4	3	1
Choked / tried to strangle / smother you	2	1	3	3	1	0	0	1	0	0	4	3	5	6	2
Forced you / tried to force you to have sexual intercourse when you did not want to	2	1	2	3	1	0	0	0	0	0	3	1	5	5	1
Forced you / tried to force you to take part in another sexual activity when you did not want to	1	1	1	1	0	0	1	0	0	0	1	2	2	2	0
EXPERIENCED ANY PHYSICAL ABUSE	12	12	17	14	4	10	9	14	11	3	14	15	19	17	5
EXPERIENCED NO PHYSICAL ABUSE	86	86	81	84	94	89	89	84	88	96	84	83	79	80	92

1. For notes relating to this table refer to Table A1.12.



© Crown copyright 2011

ISBN: 978-1-78045-558-7 (web only)

APS Group Scotland
DPPAS12360 (12/11)

w w w . s c o t l a n d . g o v . u k