



Ministry of
JUSTICE



Reoffending of juveniles: results from the 2006 cohort

England and Wales

Ministry of Justice
Statistics bulletin

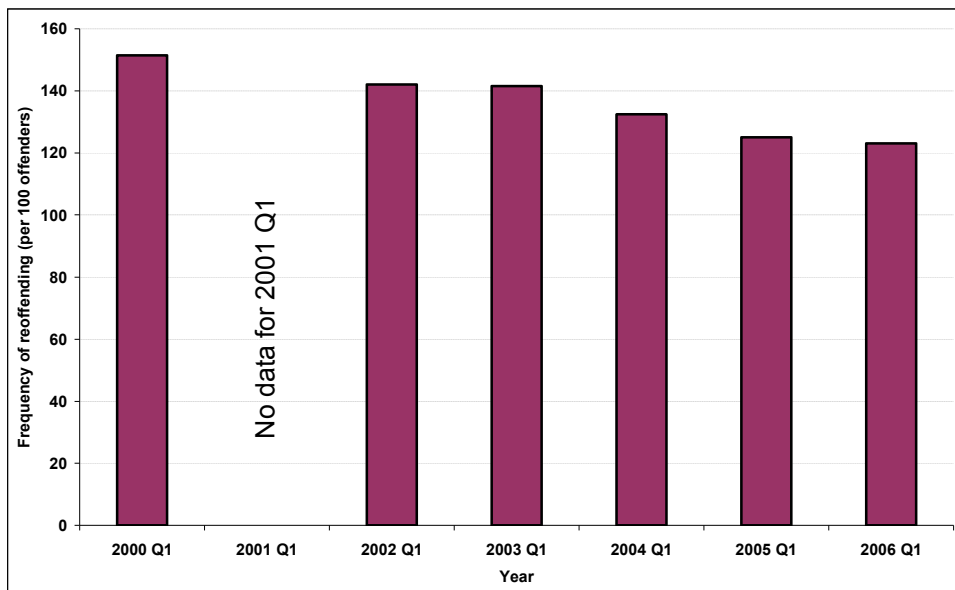
Published 4 September 2008

Executive summary

Comparing the reoffending results for the 2000 and 2006 juvenile cohorts shows:

- The frequency rate fell 18.7% from 151.4 to 123.1 offences per 100 offenders (Figure A and Table 1);
- The number of offences classified as most serious (severe) per 100 offenders fell 8.7% from 0.91 to 0.83 offences (Table 1);
- The proportion of offenders reoffending (actual yes/no rate) decreased by 3.7% (1.5 percentage points) from 40.2% to 38.7% (Table 1).
- The proportion of offenders who reoffended fell by 0.3% when controlling for changes in offender characteristics.

Figure A: Frequency of reoffending per 100 offenders, 2000, 2002, 2003, 2004, 2005 and 2006 cohorts



N.B. Data has not been produced for the 2001 because this is consistent with adult reoffending data. It is not readily available for this year and will not substantially increase knowledge on the current progress on reoffending.

Table 1: Frequency, severity and actual and predicted (yes/no) reoffending rates, 2000, 2002, 2003, 2004, 2005 and 2006 cohorts

Year	Number of offenders in cohort	Frequency		Severity		Binary (yes/no)		
		Rate (per 100 offenders)	% change from 2000	Rate (per 100 offenders)	% change from 2000	Actual		Predicted
						% reoffending	% change from 2000	% reoffending
2000 Q1	41,176	151.4	0.0%	0.91	0.0%	40.2%	0.0%	39.8%
2002 Q1	40,753	142.1	-6.2%	0.94	3.7%	38.5%	-4.3%	39.9%
2003 Q1	40,297	141.5	-6.5%	1.01	10.6%	39.0%	-2.9%	39.6%
2004 Q1	44,153	132.4	-12.5%	0.96	4.9%	38.6%	-4.0%	39.0%
2005 Q1	45,337	125.0	-17.4%	0.90	-0.7%	38.4%	-4.4%	38.4%
2006 Q1	48,938	123.1	-18.7%	0.83	-8.7%	38.7%	-3.7%	38.4%

Contents

	Page
Introduction	3
Results	6
Appendix A: Statistical tables	17
Appendix B: Glossary of terms	27
Appendix C: Measuring reoffending	31
Appendix D: Data quality statement	35
Appendix E: Statistical modelling	38
Appendix F: Coefficients of the 2005 statistical model	42
Appendix G: List of most serious (severe) offences	44
Appendix H: References	49
Appendix I: SR02 for 2000-2006 PSA Period – 2006 cohort results	50
Explanatory notes	51

Introduction

This report contains results on reoffending – frequency, severity, actual (yes/no) and predicted (yes/no) – for juveniles (those aged 10 to 17). The results cover juveniles released from custody (either from prison, Secure Training Centres or Secure Children’s Homes) or commencing a non-custodial court disposal or those given an out-of-court disposal (either a reprimand or final warning) in the first quarters of 2000, 2002, 2003, 2004, 2005 and 2006. The use of the first quarter data (1st January to 31st March) arises from the administrative effort required to match criminal records and enables results to be more timely without compromising reliability and comparability.

All measures in this report summarise data obtained from the Police National Computer (PNC) on whether or not an offender is proven to have reoffended during a one-year follow up period, as well as how many times and the seriousness of reoffences committed.

The Home Office PSA 23 (Making Communities Safer) specifies its reoffending target in terms of a percentage reduction in the frequency of reoffences committed per hundred offenders. This measure of frequency of reoffending shows the number of offences being committed within the one-year follow up period, enabling a better understanding of the impacts of programmes and interventions which do not always lead to complete desistance by offenders, but may reduce the volume of offences offenders commit. The frequency of reoffending measure takes into account how many offences an offender may have committed (in terms of number of offences and community safety, an offender who commits one reoffence of burglary is different to an offender who commits five reoffences of burglary).

As well as using the frequency of reoffending to measure progress against the PSA 23 target, we also monitor the level of serious reoffending and the proportion of offenders who reoffend as supporting indicators of reoffending behaviour. The rate of the most serious reoffences committed (severity rate) will enable the monitoring of offences classified as most serious. These are the offences that cause the most harm to society, despite being a small subset of the overall volume of offences committed. The severity rate enables us to differentiate between the type of offences being committed (for example, whilst the yes/no measure would show both a theft and a murder as being the same, it is clearly of a very different impact to society).

The actual (yes/no) reoffending rate measures the proportion of the cohort that reoffends. This measure allows the assessment of whether or not an offender was proven to have reoffended. When compared to the predicted (yes/no) rate it enables a better understanding of what works in reducing reoffending since it controls for changes in offender characteristics between the different cohorts of offenders.

For more details on how reoffending is calculated, please see appendix C or consult the PSA Delivery Agreement 23 entitled [‘Making Communities Safer’](#).

This report also contains the final year of the Government Spending Review 2002 (SR2002) target for the 2000-2006 period. For the full results on the SR2002 please go to Appendix I.

Explanation of reoffending measures

Each measure answers one of the following questions:

Q: How much proven reoffending actually occurs?

Frequency rate

The actual number of offences the cohort committed during the one-year follow up period which resulted in a conviction at court or an out-of-court disposal. The actual proven one-year frequency rate is produced by calculating the number of proven offences per 100 offenders. For added information, the number of proven offences per 100 reoffenders is also available in the statistical tables in Appendix A.

Q: How many of the offences committed are considered to be the most serious offences?

Severity rate

The actual number of the most serious¹ offences the cohort committed during the one-year follow up period which resulted in a conviction at court or an out-of-court disposal. As with the frequency rate, the severity rate is produced by calculating the number of proven serious offences per 100 offenders, and is therefore a subset of the frequency rate.

Q: What proportion of offenders actually reoffend?

Actual (yes/no) rate

The actual number of offenders in the cohort offending at least once during the one-year follow up period, where the offence resulted in a conviction at court or an out-of-court disposal. The actual (yes/no) reoffending rate is presented in this report as a percentage of the total number of offenders in the cohort.

Q: What proportion of offenders are predicted to reoffend?

Predicted (yes/no) rate

The predicted (yes/no) reoffending rate is different from the other three measures in the sense that it does not come from actual proven offences, but from a statistical model created for the new baseline year of 2005. The basic principle behind the predicted rate is that it calculates the percentage of offenders who are estimated to reoffend during the one-year follow up period after changes in offender characteristics have been controlled for.

Further details on these rates can be found in the Glossary of Terms (Appendix B) along with other useful definitions of technical terms.

¹ Most serious offences are offences involving death (e.g. murder), serious violence against the person (e.g. grievous bodily harm) and some sexual offences. For the full list of most serious offences please consult Appendix G at the end of this report.

Results

This section presents more detailed results of the overall figures for the reoffending rates by different breakdowns of offenders in the cohort. Information is presented on:

- The overall reoffending rate (page 7);
 - Frequency;
 - Severity;
 - Actual and predicted (yes/no) rates;
 - Time to first reoffence;
 - Total number of offenders in the cohort;
- Gender (page 11);
- Age (page 12);
- Index offence group (page 12);
- Previous offending history (page 13);
- Index disposal (page 14); and,
- Ethnicity (page 15).
- PSA 23 progress for frequency of reoffending for the 2005-2011 period (Comprehensive Spending Review 2007) (page 16).
- PSA progress for actual and predicted (yes/no) reoffending for the 2000-2006 period (Spending Review 2002) (page 16)

The main data tables can be in found in Appendix A from page 16.

Overall reoffending rates

All three measures of juvenile reoffending showed falls between the 2000 and 2006 cohorts:

- The frequency rate fell 18.7% from 151.4 to 123.1 offences per 100 offenders (Table 2);
- The number of offences classified as the most serious (severe) per 100 offenders fell 8.7% from 0.91 to 0.83 serious offences (Table 2);
- The proportion of offenders reoffending (actual yes/no rate) decreased by 3.7% (1.5 percentage points) from 40.2% to 38.7% (Table 2);
- The proportion of offenders who reoffended fell by 0.3% when controlling for changes in offender characteristics.

Table 2: Frequency, severity and actual and predicted (yes/no) reoffending rates, 2000, 2002, 2003, 2004, 2005 and 2006 cohorts

Year	Number of offenders in cohort	Frequency		Severity		Binary (yes/no)				
		Rate (per 100 offenders)	% change from 2000	Rate (per 100 offenders)	% change from 2000	Actual		Predicted	%	%
						% reoffending	% change from 2000	% reoffending	progress (from 2005)	progress (from 2000) ¹
2000 Q1	41,176	151.4	0.0%	0.91	0.0%	40.2%	0.0%	39.8%		0.0%
2002 Q1	40,753	142.1	-6.2%	0.94	3.7%	38.5%	-4.3%	39.9%		-4.5%
2003 Q1	40,297	141.5	-6.5%	1.01	10.6%	39.0%	-2.9%	39.6%		-2.5%
2004 Q1	44,153	132.4	-12.5%	0.96	4.9%	38.6%	-4.0%	39.0%		-2.1%
2005 Q1	45,337	125.0	-17.4%	0.90	-0.7%	38.4%	-4.4%	38.4%	0.0%	-1.1%
2006 Q1	48,938	123.1	-18.7%	0.83	-8.7%	38.7%	-3.7%	38.4%	0.7%	-0.3%

¹Progress from 2000 takes account of the difference between the 2000 actual and predicted rates and applies it to all years. This ensures that the percentage difference is using the correct denominator. See Appendix B for more information.

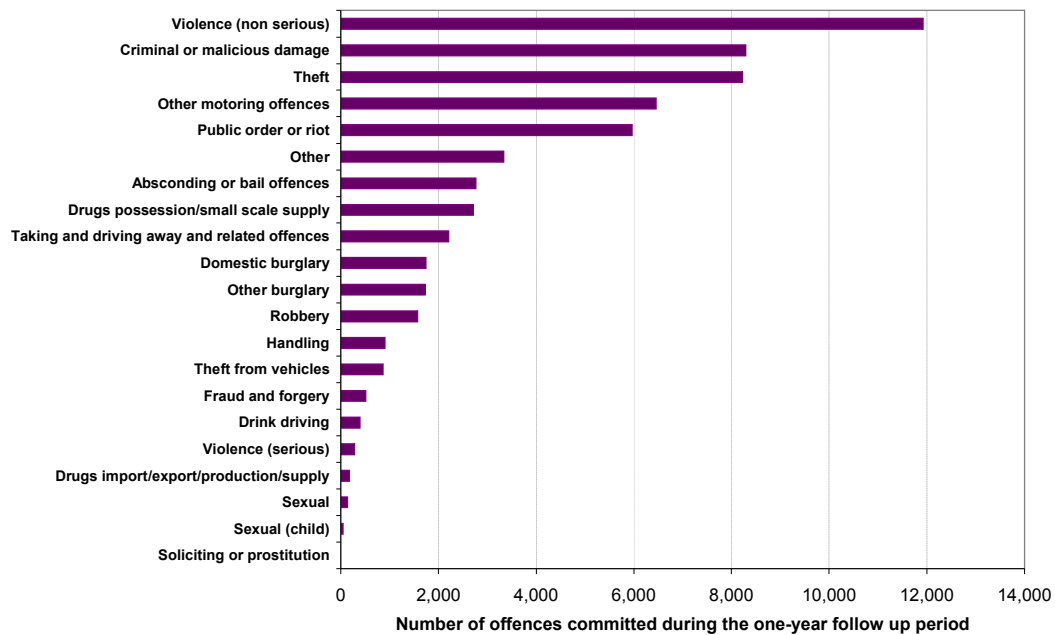
Frequency rate

The reduction in frequency rate of 18.7% between the 2000 and 2006 cohorts compared to the reduction of 3.7% in actual (yes/no) reoffending shows how some offenders do not desist entirely, but commit fewer offences.

The actual number of proven offences committed by the 2006 cohort was 60,245, down from the 62,344 offences committed by the 2000 cohort. This occurred despite a substantial increase in the size of the cohort from 41,176 in 2000 to 48,938 in 2006.

In the 2006 cohort, the three most frequent types of offences committed were violence (non serious), criminal or malicious damage and theft, making up 19.8%, 13.8% and 13.6% of all offences committed respectively (Table A7, Figure B). This compares to the three most frequent types of offences committed by the 2000 cohort which were other motoring, theft and violence (non serious), making up 19.0%, 18.3% and 11.5% of all offences committed respectively.

Figure B: Number of offences committed during the one-year follow up period by the 2006 cohort, by offence group



Severity rate

The number of the most serious offences committed in the one-year follow up period increased slightly from 375² for the 2000 cohort to 407 for the 2006 cohort, but combined with the increase in the number of offenders in the cohort, resulted in a fall of 8.7% in the number of serious offences committed per 100 offenders³. The majority of the most serious offences committed by the 2006 cohort were in the violence offence group, with 28.5% in the sexual offence group, similar to the 28.0% for the 2000 cohort. Additionally, the majority of the most serious offences were committed by offenders who had never before committed an offence classified as serious (94.0% in the 2006 cohort).

The small number of most serious offences committed (407 out of 60,245 for the 2006 cohort) places a limitation on any robust breakdown analysis of the severity rate. Therefore, no interpretations will be drawn out about the impact of offender characteristics on the severity rate. An additional problem posed by the small number of most serious offences is that the overall severity rate is likely to fluctuate year on year (see Table 2) given that a small change in the overall numbers will translate into a large rate change.

² This number can be derived from the statistical tables in Appendix A as follows: (severity rate) x (total number of offenders in cohort) / 100

³ The Sexual Offences Act 2003 introduced a large number of new offences which resulted in changes in the coverage of many of the serious sexual offences we are monitoring; as a result the figures for severity for 2004 onwards may not be comparable with those before 2004.

Actual and predicted (yes/no) rates

For the 2006 cohort the actual (yes/no) rate was 38.7%. This number was 1.5 percentage points lower than the 2000 cohort (40.2%).

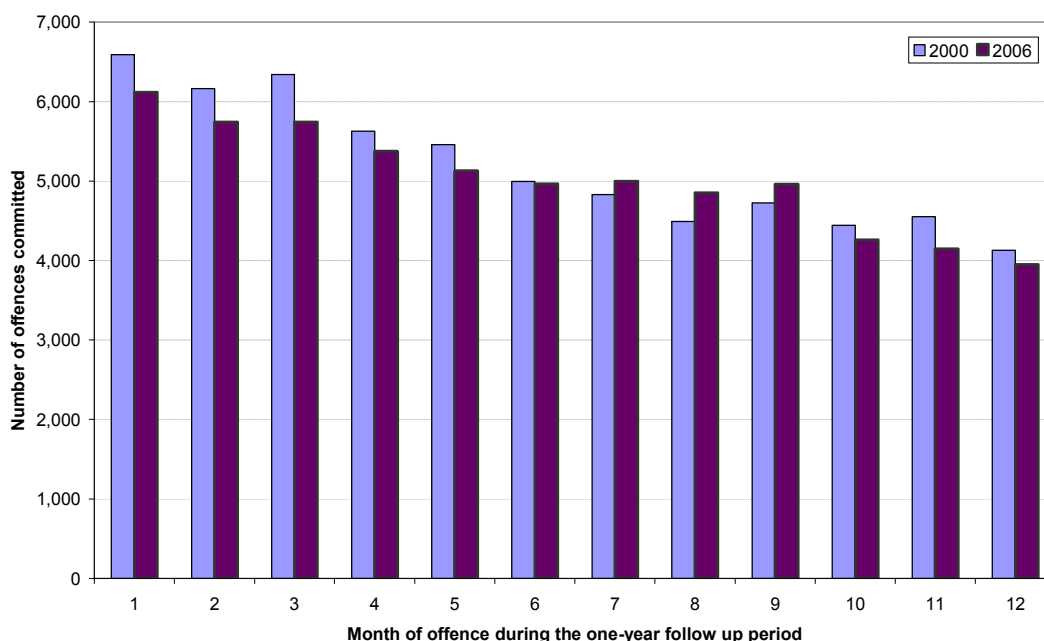
Whilst the predicted rate based on the 2005 cohort has been developed to control for changes in offender characteristics and therefore the likelihood of reoffending (in the yes/no measure) from 2005, it can be applied back to the 2000 cohort to show the change between 2000 and 2006 in the actual (yes/no) rate after controlling for changes in offender characteristics. This gives a reduction in actual (yes/no) reoffending after controlling for changes in offender characteristics of 0.3%. This compares to a reduction in reoffending of 0.2% over the same period when measuring using the old methodology (see Appendix I for more detail).

There are no predicted rates for the frequency or severity of reoffending, as yet, due to the complex nature of the variables being considered, but work continues in this area.

Reoffending across the one-year follow up period

Figure C shows how many offences were committed by the number of months into the one-year follow up period. The highest numbers of offences are committed in the first three months of the follow up (29.2% of all reoffences in the 2006 cohort). The number of offences then reduces gradually almost month by month. This may be because there is less time for convictions to be processed by the criminal justice system for offences committed towards the end of the 12 month period, or because after committing an offence some offenders may be sent to custody and can no longer commit further offences. However, in the 2006 cohort around 7% of all offences were still committed in the last month.

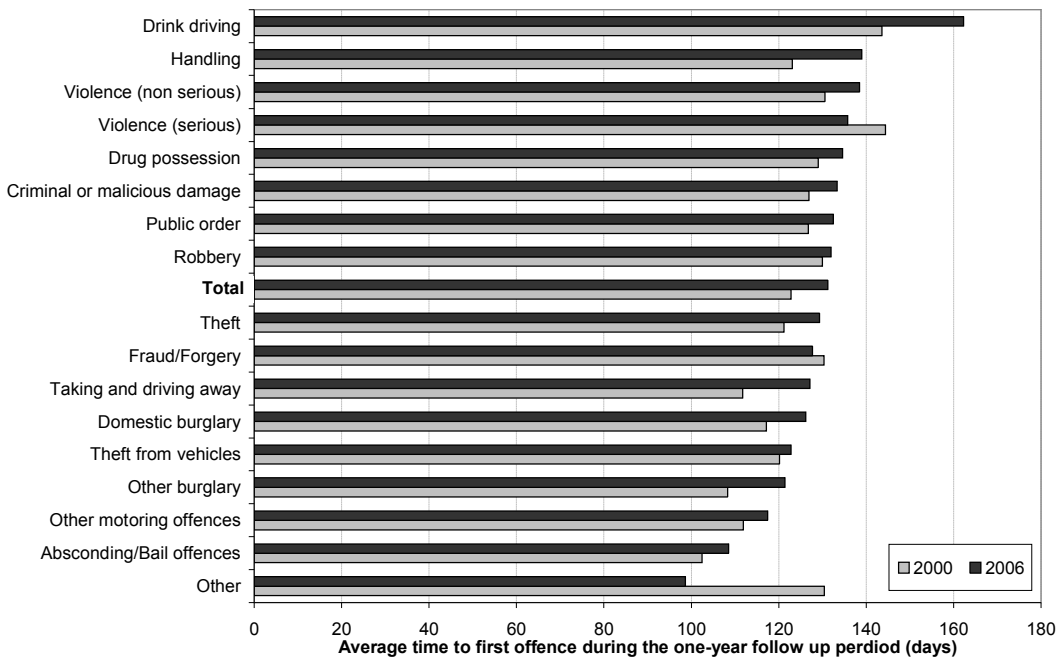
Figure C: Number of offences committed by month of offence into the one-year follow up period, 2000 and 2006 cohorts



Whilst Figure C shows the number of offences committed, when considering the proportion of offences from the entire cohort, until month 9 the rate of reoffending was lower for the 2006 cohort compared to the 2000, 2002, 2003, 2004 and 2005 cohorts. Then from month 10 onwards, the rate of reoffending was slightly higher for the 2006 cohort than it had been for the 2000 cohort.

Figure D shows (for those offenders who do reoffend) the average number of days it takes for an offender to commit their first offence by their index offence for the 2000 and 2006 cohorts. It should not be assumed that offenders reoffend in the same category as their index offence (see section on 'Reoffending by index offence group' for more detail on this). On average, offenders in the 2006 cohort took 131.2 days to reoffend (in 2000 the same value was 122.8 days). Offenders convicted of 'other' offences in the 2006 cohort took the shortest number of days to reoffend whilst offenders convicted of drink driving had the longest period before reoffending. However, due to the small number of offenders with an index offence of drink driving, this fluctuates year to year.

Figure D: Average number of days before reoffending took place by index offence group, 2000 and 2006 cohorts



Total number of offenders in the cohort

The total number of offenders increased from 41,176 in the 2000 cohort to 48,938 in the 2006 cohort. This represents an increase of around 7,800 extra offenders – an 18.9% increase. Whilst the number of females has increased at a faster rate than the number of males (42.2% compared to 12.7% between 2000 and 2006), of the 7,762 additional offenders in the 2006 cohort, 53.2% were males. For both males and females, just under two-thirds of the increase consists of offenders receiving an out-of-court disposal for a first offence.

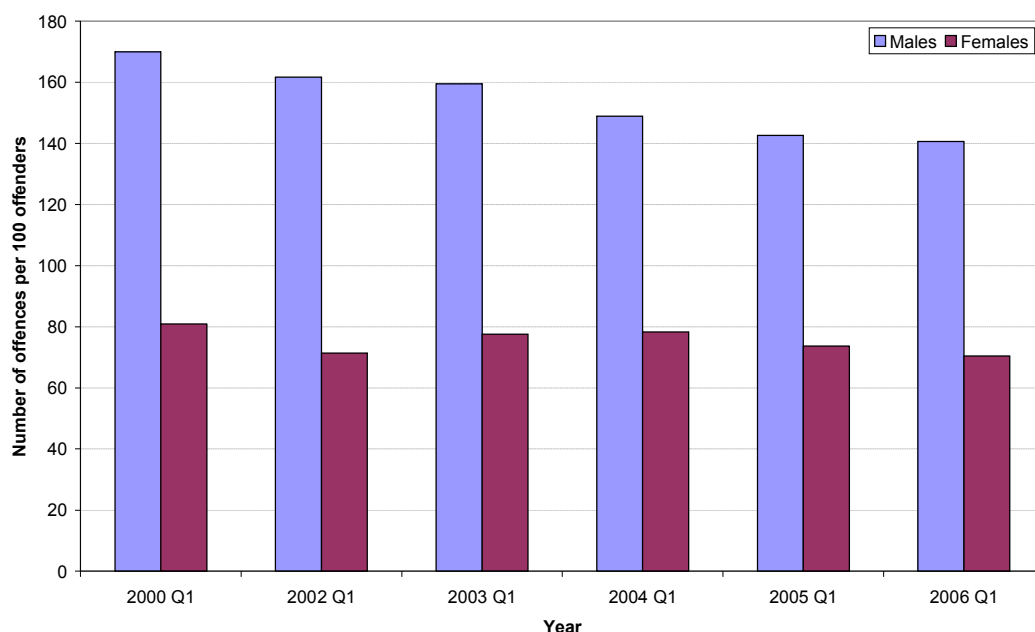
Figures on the total number of offences and number of serious offences committed by the cohorts cannot be aggregated up to full year figures because there is no evidence that the first quarter is representative of the full year. However, if simply multiplied by a factor of 4, it is likely that in 2006 the total number of offenders is around 196,000, the total number of offences is around 240,000 and the total number of serious offences is around 1,600. However, the numbers are unlikely to be this large because of the effect of Multiple Offender Entries (MOEs) (see Appendix C for more details).

Reoffending by gender (Table A1)

Between the 2000 and 2006 cohorts, the proportion of female offenders in the cohort increased from 20.9% to 25.0% (although this is down slightly from 25.5% in the 2005 cohort). Since females have a much lower frequency rate than males, the increase in the proportion of female offenders in the cohort would lead to a reduction in the frequency rate for the cohort as a whole, in this case around 2.4%, even if males and females in the 2006 cohort on average committed the same number of offences as they did in the 2000 cohort. The same would apply to the number of the most serious offences committed per 100 offenders. Equally, changes in the characteristics of offenders in the cohort, for example a rise in the proportion of offenders with no previous convictions, would cause a change in the frequency rate.

In the 2006 cohort, the frequency rate for males was 140.7 offences per 100 offenders, around double that of females, for whom the rate was 70.4 offences per 100 offenders. However, males have seen the largest reduction in frequency rate of 17.3% from 170.0 in the 2000 cohort, compared to a reduction for females of 12.9% from 80.9 in the 2000 cohort (Figure E).

Figure E: Number of offences per 100 offenders by gender, 2000, 2002, 2003, 2004, 2005 and 2006 cohorts



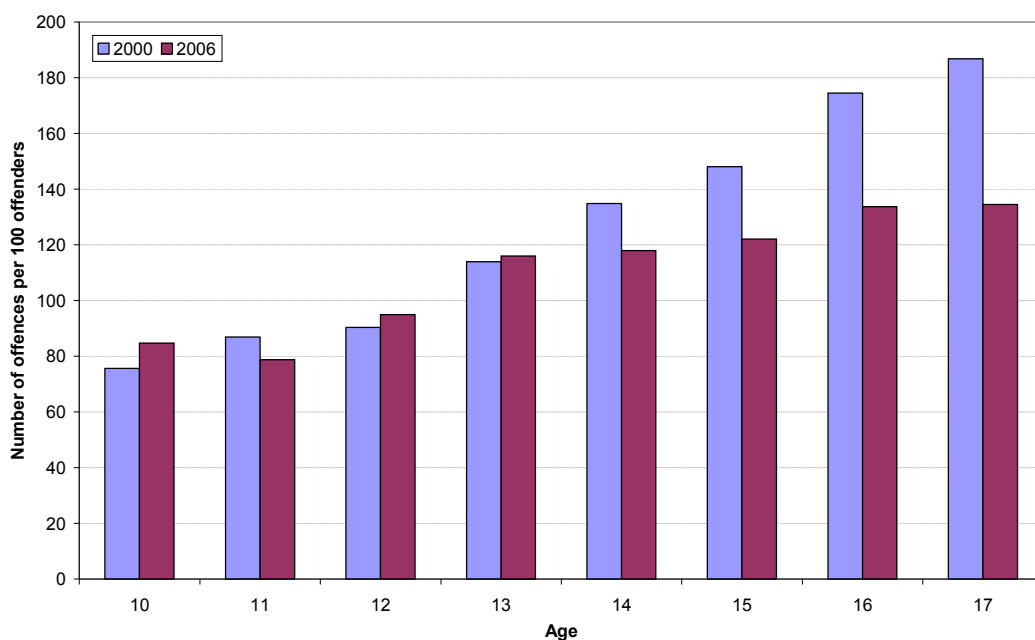
Separate data tables for males and females are available in a downloadable Microsoft Excel format at the Ministry of Justice [website](#).

Reoffending by age (Table A2)

Age is taken to be the age of the offender at the index date, i.e. the date on which the offender entered the cohort (sanctioned or released from custody).

Almost all ages saw a reduction in the frequency rate between the 2000 and 2006 cohorts, with the exception of 10 year olds, who saw an increase of 12.0%, and 12 and 13 year olds, who had smaller increases. The largest reductions have been made with 16 and 17 year olds, whose frequency rates fell by 23.4% and 28.0% respectively (Figure F). However, these two ages still both had the highest frequency rates in 2006 of all ages, at 133.7 for 16 year olds and 134.5 for 17 year olds.

Figure F: Number of offences per 100 offenders by age, 2000 and 2006 cohorts



Reoffending by index offence group (Tables A3, A7 and A8)

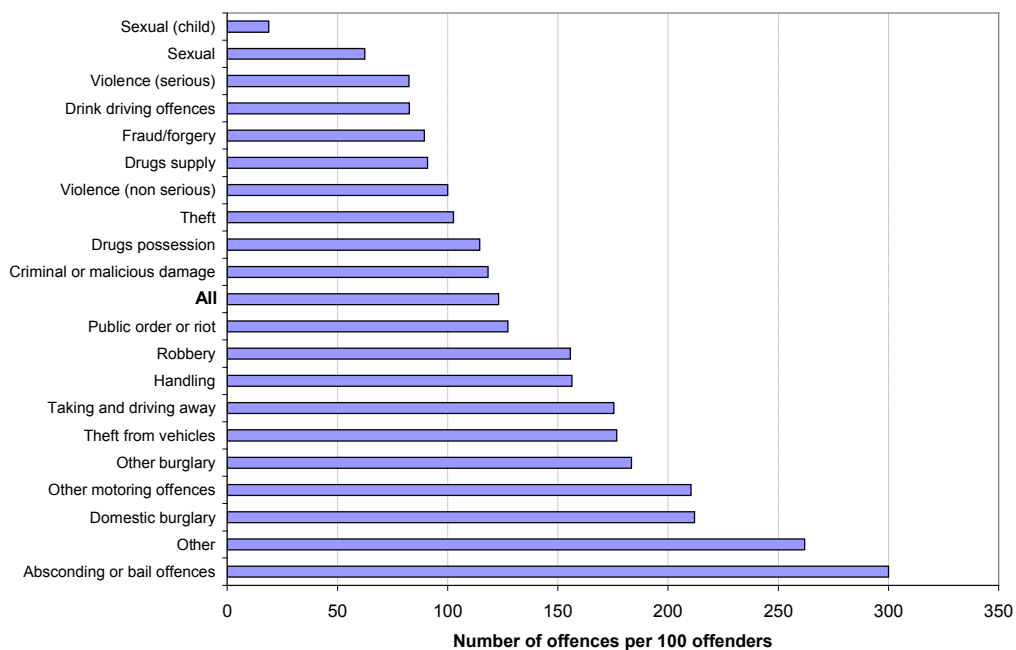
Offenders with index offences of absconding or bail offences, other offences and domestic burglary had the highest frequency rates in the 2006 cohort, at 300.0, 261.9 and 212.0 respectively (Figure G).

The only offence group to increase in frequency rate between the 2000 and 2006 cohorts was 'other' offences, with an increase of 149.5% from 105.0 in 2000 to 261.9 in 2006, although this value is still lower than the 2004 cohort. At the same time, the number of offenders in the cohorts with an index offence of other increased from 260 to 846. This was driven by large increases in the number of offenders with offences of either 'Breach of an Anti-Social Behaviour Order (ASBO)' (although the increase between 2005 and 2006 was much smaller) or 'Contravention of a direction given by a

constable (Anti-Social Behaviour Act 2003)' (although this has fallen between 2005 and 2006). Offenders who receive an ASBO have characteristics which make them likely to reoffend such as a long criminal history. Offenders in the 2006 cohort with an index offence of 'Breach of an ASBO' had a frequency rate of 430.4, whilst the actual reoffending rate was 80.0%.

The number of offenders with an index offence of violence (non serious) has also seen a large increase from 6,055 in the 2000 cohort to 12,213 in the 2006 cohort. This was driven by offenders committing index offences of 'Common assault and battery' which increased by 3,779.

Figure G: Number of offences committed per 100 offenders by index offence group, 2006 cohort



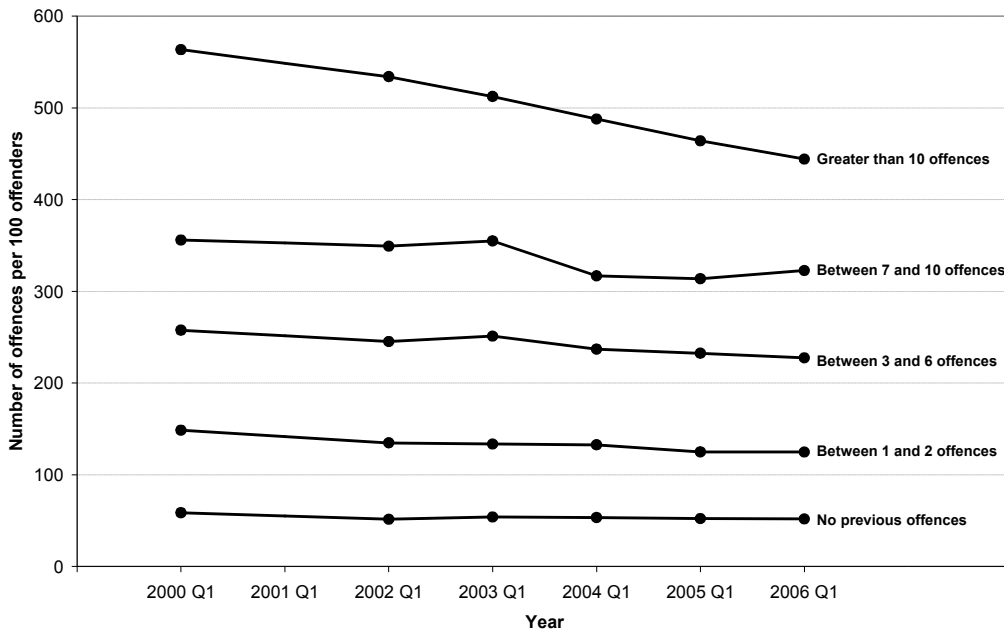
In the 2006 cohort, 19.9% of offences committed were in the same offence group as the index offence of the offender. In particular, offenders with index offences of other offences, other motoring offences and violence (non serious) committed the most similar reoffence types, with 33.0%, 29.6% and 27.9% of reoffences being in the same category as the index offence. Conversely, of the reoffences of offenders with an index offence of violence (serious), only 2.7% of the reoffences were also violence (serious).

Reoffending by offending history (Table A4)

Frequency of reoffending increases with the number of previous offences an offender has committed, but all groups have seen a reduction between the 2000 and 2006 cohorts. Offenders with 11+ previous offences saw the greatest reductions in frequency rate of 21.2% (Figure H).

Just over half of the juvenile offenders had no proven previous offences, increasing slightly from 52.0% in the 2000 cohort to 53.1% in the 2006 cohort.

Figure H: Number of offences per 100 offenders by number of previous offences, 2000, 2002, 2003, 2004, 2005 and 2006 cohorts

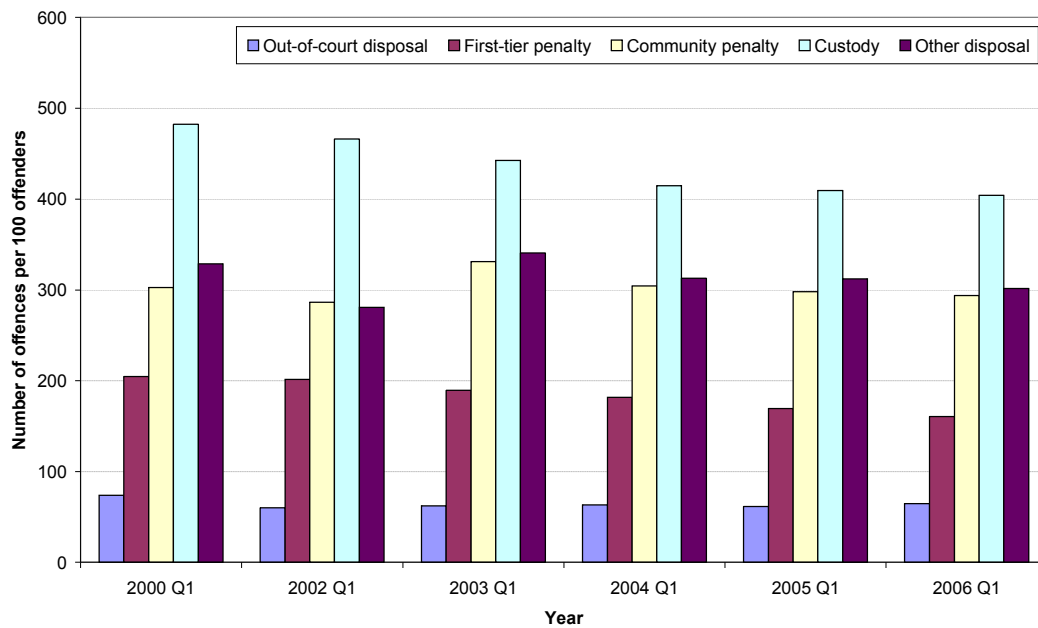


Reoffending by index disposal (Table A5)

Frequency rates by disposal should not be compared to assess the effectiveness of sentences, as there is no controlling for known differences in offender characteristics or other factors that may affect reoffending. Analysis of the effect of a particular disposal over time is made difficult due to the changing use of disposals.

Juvenile offenders have seen reductions in the frequency rate for all different types of disposals (out-of-court, first-tier penalties, community penalties, custody and other) between the 2000 and 2006 cohorts. Offenders commencing first-tier penalties, released from custody or given out-of-court disposals have seen the largest reductions (reductions of 21.6%, 16.2% and 12.4% respectively), whilst offenders starting community penalties and other disposals have seen smaller reductions. Offenders released from custody have the highest frequency rates (Figure I). For community penalties, custody and other disposals, whilst the frequency rate has decreased, there has been an increase in the actual (yes/no) reoffending rate, suggesting that whilst a higher proportion of offenders are committing at least one offence, overall, fewer offences are being committed.

Figure I: Number of offences per 100 offenders by index disposal, 2000, 2002, 2003, 2004, 2005 and 2006 cohorts

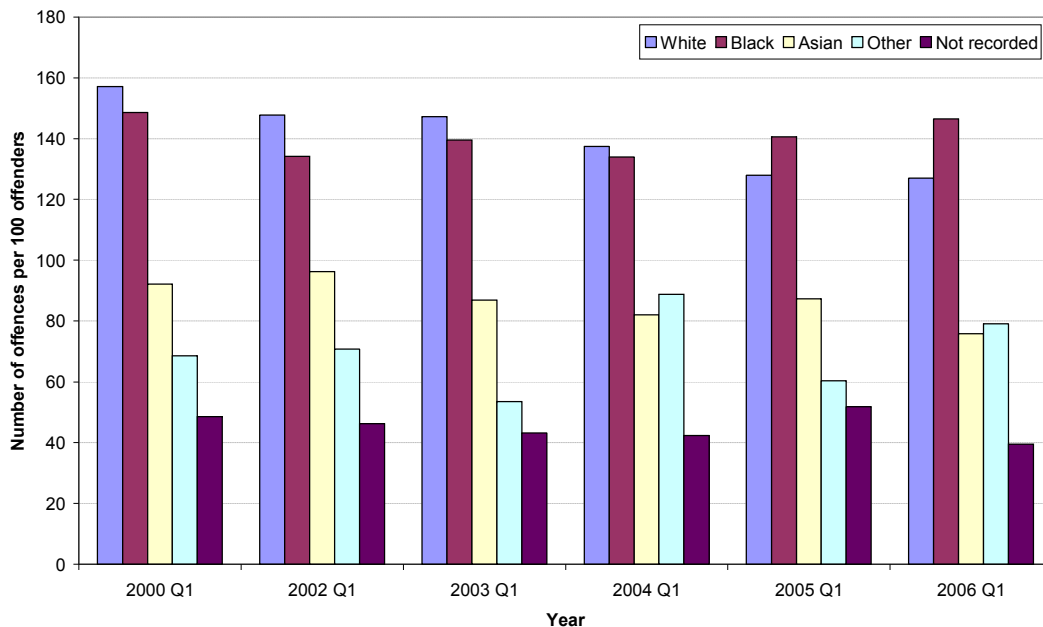


Reoffending by ethnicity (Table A6)

Information on reoffending by ethnicity is shown in Figure J. It should be treated with caution as the ethnicity data are derived from an operational policing system and reflect the officer's view of the offender's ethnicity. From a statistical point of view, it should be noted that the classification offers neither the level of detail of other ethnic classifications (e.g. the census) nor the opportunity for the offender to classify their own ethnic group.

White offenders had the largest reduction in frequency rate between the 2000 and 2006 cohorts with 19.2%. Offenders with an ethnicity of 'other' saw an increase in frequency of 15.2%, although they still had the second lowest frequency rates overall. Black offenders had the highest frequency rates for the 2005 and 2006 cohorts with white offenders having the highest rates for all previous years. Asian offenders have consistently had lower frequency rates than white and black offenders between the 2000 and 2006 cohorts (Figure J).

Figure J: Number of offences per 100 offenders by ethnicity, 2000, 2002, 2003, 2004, 2005 and 2006 cohorts



PSA 23 progress for frequency of reoffending for the 2005-2011 period (Comprehensive Spending Review 2007)

The PSA 23 (Making Communities Safer) target for juvenile reoffending was announced in July 2008 and set out that juvenile reoffending should be 10% lower in the 2011 cohort than it was in the 2005 cohort. The data in this report shows a reduction of 1.5% from the 2005 cohort against the target.

PSA progress for actual and predicted (yes/no) reoffending for the 2000-2006 period (Spending Review 2002)

For the PSA target (covering 2000-2006 period) there has been a reduction in reoffending of 0.2% against the 2000 baseline when changes in offender characteristics are taken into account. Thus, target to reduce reoffending by 5 per cent was not met.

For more information on the 2000-2006 PSA results please go to Appendix I.

Appendix A: Statistical tables

Table A1: Actual and predicted reoffending rates, and frequency and severity rates per 100 offenders, by gender

		Number of offenders	Actual reoffending rate	Predicted reoffending rate ¹	Number of offences per 100 offenders	Number of offences per 100 reoffenders	Number of severe offences per 100 offenders
Males	2000 Q1	32,573	43.8	43.4	170.0	388.4	1.1
	2002 Q1	31,892	42.5	43.7	161.7	380.5	1.1
	2003 Q1	31,460	42.7	43.4	159.5	373.1	1.2
	2004 Q1	33,819	42.3	42.9	148.9	352.3	1.2
	2005 Q1	33,770	42.5	42.5	142.6	335.3	1.1
	2006 Q1	36,702	42.8	42.4	140.7	328.3	1.0
Females	2000 Q1	8,603	26.6	25.9	80.9	304.2	0.3
	2002 Q1	8,861	24.0	26.2	71.4	297.9	0.2
	2003 Q1	8,837	25.7	26.2	77.6	301.8	0.2
	2004 Q1	10,334	26.5	26.3	78.3	296.0	0.3
	2005 Q1	11,567	26.3	26.3	73.7	279.7	0.3
	2006 Q1	12,236	26.3	26.5	70.4	268.1	0.2
Total	2000 Q1	41,176	40.2	39.8	151.4	376.7	0.9
	2002 Q1	40,753	38.5	39.9	142.1	369.3	0.9
	2003 Q1	40,297	39.0	39.6	141.5	362.8	1.0
	2004 Q1	44,153	38.6	39.0	132.4	343.2	1.0
	2005 Q1	45,337	38.4	38.4	125.0	325.5	0.9
	2006 Q1	48,938	38.7	38.4	123.1	318.1	0.8

¹See Appendix B - Glossary of terms - for an explanation on how to use and interpret the predicted (yes/no) rate.

²Data removed as extremely low numbers (less than or equal to 10 offenders or 10 offences) make the data unreliable for interpretation. *Italics mean greater than 10 and less than 50 offenders or offences - treat the data with caution.*

Separate tables for males and females are also available in a downloadable Microsoft Excel format at the Ministry of Justice website.

Table A2: Actual and predicted reoffending rates, and frequency and severity rates per 100 offenders, by age

		Number of offenders	Actual reoffending rate	Predicted reoffending rate ¹	Number of offences per 100 offenders	Number of offences per 100 reoffenders	Number of severe offences per 100 offenders
10	2000 Q1	455	29.2	28.0	75.6	258.6	*
	2002 Q1	399	29.1	28.4	84.0	288.8	*
	2003 Q1	404	29.2	27.1	85.4	292.4	*
	2004 Q1	398	32.7	27.9	102.3	313.1	*
	2005 Q1	460	27.8	27.3	65.0	233.6	*
	2006 Q1	405	29.1	27.1	84.7	290.7	*
11	2000 Q1	1,218	30.1	29.8	86.9	288.3	*
	2002 Q1	1,029	27.8	30.1	84.4	303.5	*
	2003 Q1	1,025	27.2	29.4	75.3	276.7	*
	2004 Q1	1,053	27.6	29.2	74.6	270.1	*
	2005 Q1	1,221	28.8	29.0	89.5	310.5	0.9
	2006 Q1	1,188	31.1	28.5	78.7	252.7	*
12	2000 Q1	2,310	30.3	32.6	90.3	298.4	0.6
	2002 Q1	2,272	29.6	33.0	90.4	305.2	0.6
	2003 Q1	2,084	32.4	33.3	97.0	299.1	*
	2004 Q1	2,423	32.2	33.0	98.1	304.5	0.7
	2005 Q1	2,562	31.3	31.3	91.5	292.0	0.5
	2006 Q1	2,744	33.6	32.2	94.9	282.0	0.6
13	2000 Q1	4,140	34.2	36.8	113.9	332.8	0.7
	2002 Q1	4,026	32.0	37.1	99.0	309.6	0.5
	2003 Q1	3,830	33.4	36.8	111.2	333.2	0.5
	2004 Q1	4,349	35.5	35.9	114.3	321.7	0.7
	2005 Q1	4,708	36.0	36.0	112.2	311.3	0.7
	2006 Q1	4,787	35.8	36.2	116.0	324.4	0.5
14	2000 Q1	6,402	39.1	39.7	134.8	344.9	0.7
	2002 Q1	6,247	36.3	40.0	123.9	341.7	0.8
	2003 Q1	5,907	37.7	39.4	128.8	342.1	0.9
	2004 Q1	6,863	38.6	38.9	126.8	328.3	0.8
	2005 Q1	7,382	38.4	38.4	113.5	295.3	0.7
	2006 Q1	8,067	38.4	38.4	117.9	307.4	0.6
15	2000 Q1	8,186	40.3	41.3	148.0	367.3	1.2
	2002 Q1	8,154	39.2	41.5	141.1	359.6	1.1
	2003 Q1	8,095	38.8	40.9	140.6	362.7	0.9
	2004 Q1	9,065	39.6	40.3	134.6	339.6	0.9
	2005 Q1	9,354	39.8	39.8	130.0	326.5	0.9
	2006 Q1	10,639	39.4	39.5	122.1	309.6	1.0
16	2000 Q1	8,865	43.1	41.4	174.5	405.2	1.0
	2002 Q1	8,795	41.6	41.5	162.6	390.8	1.0
	2003 Q1	9,050	41.4	41.0	156.7	378.6	1.2
	2004 Q1	9,664	39.5	40.2	138.8	351.6	1.0
	2005 Q1	9,871	39.8	39.8	137.8	346.2	1.0
	2006 Q1	10,535	39.6	40.2	133.7	337.4	1.0
17	2000 Q1	9,600	44.9	41.9	186.7	415.5	1.0
	2002 Q1	9,831	42.7	41.2	174.1	408.3	1.3
	2003 Q1	9,902	43.0	41.4	166.2	386.3	1.3
	2004 Q1	10,338	40.9	40.8	150.9	369.2	1.4
	2005 Q1	9,779	40.3	40.3	138.3	343.1	1.2
	2006 Q1	10,573	41.1	39.8	134.5	327.0	1.0
Total	2000 Q1	41,176	40.2	39.8	151.4	376.7	0.9
	2002 Q1	40,753	38.5	39.9	142.1	369.3	0.9
	2003 Q1	40,297	39.0	39.6	141.5	362.8	1.0
	2004 Q1	44,153	38.6	39.0	132.4	343.2	1.0
	2005 Q1	45,337	38.4	38.4	125.0	325.5	0.9
	2006 Q1	48,938	38.7	38.4	123.1	318.1	0.8

¹See Appendix B - Glossary of terms - for an explanation on how to use and interpret the predicted (yes/no) rate.

²Data removed as extremely low numbers (less than or equal to 10 offenders or 10 offences) make the data unreliable for interpretation. *Italics mean greater than 10 and less than 50 offenders or offences - treat the data with caution.*

Table A3 (Part 1): Actual and predicted reoffending rates, and frequency and severity rates per 100 offenders, by index offence group

		Number of offenders	Actual reoffending rate	Predicted reoffending rate ¹	Number of offences per 100 offenders	Number of offences per 100 reoffenders	Number of severe offences per 100 offenders
Violence (serious)	2000 Q1	287	34.8	30.1	115.3	331.0	*
	2002 Q1	269	34.6	31.0	120.1	347.3	*
	2003 Q1	249	33.7	30.0	110.8	328.6	*
	2004 Q1	273	24.5	30.3	82.1	334.3	*
	2005 Q1	230	28.7	28.7	65.7	228.8	*
	2006 Q1	273	32.6	29.5	82.4	252.8	*
Violence (non serious)	2000 Q1	6,055	34.8	36.4	107.9	309.8	1.1
	2002 Q1	6,737	33.6	36.8	102.4	304.9	1.0
	2003 Q1	7,165	34.9	36.5	110.0	314.9	1.2
	2004 Q1	8,691	35.0	35.8	103.5	295.4	1.0
	2005 Q1	10,157	35.3	35.3	101.3	286.8	0.8
	2006 Q1	12,213	35.3	35.2	100.0	282.9	0.8
Robbery	2000 Q1	497	49.7	46.9	201.0	404.5	*
	2002 Q1	556	49.3	50.6	198.9	403.6	*
	2003 Q1	585	46.0	48.8	158.3	344.2	1.9
	2004 Q1	592	46.6	47.6	178.2	382.2	*
	2005 Q1	635	48.5	48.5	166.9	344.2	2.2
	2006 Q1	747	47.9	46.4	155.7	324.9	*
Public order or riot	2000 Q1	3,510	43.2	42.6	152.5	353.0	1.3
	2002 Q1	3,574	41.7	42.7	141.7	340.2	1.3
	2003 Q1	3,849	41.1	42.1	135.0	328.8	1.6
	2004 Q1	4,602	41.0	41.5	134.7	328.5	1.2
	2005 Q1	4,139	41.6	41.6	126.2	303.7	0.9
	2006 Q1	4,394	43.0	41.9	127.4	296.4	0.9
Sexual	2000 Q1	65	35.4	29.8	98.5	278.3	*
	2002 Q1	55	36.4	32.6	147.3	405.0	*
	2003 Q1	67	28.4	31.0	83.6	294.7	*
	2004 Q1	69	29.0	32.5	73.9	255.0	*
	2005 Q1	114	29.8	29.8	92.1	308.8	*
	2006 Q1	133	25.6	28.3	62.4	244.1	*
Sexual (child)	2000 Q1	175	20.6	20.1	59.4	288.9	*
	2002 Q1	199	22.6	20.5	76.4	337.8	*
	2003 Q1	168	22.6	20.1	63.7	281.6	*
	2004 Q1	224	14.7	17.8	40.6	275.8	*
	2005 Q1	158	17.7	17.7	48.1	271.4	*
	2006 Q1	170	10.6	18.1	18.8	177.8	*
Soliciting or prostitution	2000 Q1	*	*	*	*	*	*
	2002 Q1	*	*	*	*	*	*
	2003 Q1	*	*	*	*	*	*
	2004 Q1	*	*	*	*	*	*
	2005 Q1	*	*	*	*	*	*
	2006 Q1	*	*	*	*	*	*
Domestic burglary	2000 Q1	1,154	55.6	54.3	232.3	417.6	*
	2002 Q1	994	55.7	55.3	244.1	437.9	2.4
	2003 Q1	999	53.0	53.0	215.6	407.2	1.1
	2004 Q1	965	53.7	54.0	205.5	382.8	1.1
	2005 Q1	1,009	52.4	52.4	190.3	362.9	1.9
	2006 Q1	1,024	54.7	52.4	212.0	387.7	*
Other burglary	2000 Q1	1,765	44.6	46.6	186.5	417.6	0.9
	2002 Q1	1,527	46.0	47.6	200.4	435.9	0.9
	2003 Q1	1,362	48.0	47.0	187.7	390.8	*
	2004 Q1	1,302	45.2	47.5	185.5	410.7	0.8
	2005 Q1	1,221	45.5	45.5	167.6	368.2	1.2
	2006 Q1	1,464	47.8	46.3	183.4	383.6	1.8
Theft	2000 Q1	11,472	36.8	34.9	137.8	375.1	0.6
	2002 Q1	9,909	33.5	34.2	124.6	372.2	0.5
	2003 Q1	8,950	33.9	33.4	122.7	361.9	0.6
	2004 Q1	10,035	32.2	32.7	105.4	326.8	0.6
	2005 Q1	10,697	32.4	32.4	99.6	307.7	0.6
	2006 Q1	10,939	32.7	32.5	102.6	313.9	0.6
Handling	2000 Q1	1,267	46.3	43.0	186.4	402.4	1.0
	2002 Q1	1,186	44.8	43.2	187.1	417.9	*
	2003 Q1	1,018	44.6	43.2	188.8	423.3	*
	2004 Q1	971	44.9	42.7	175.3	390.4	*
	2005 Q1	925	41.4	41.4	147.1	355.4	*
	2006 Q1	796	46.4	42.6	156.4	337.4	*

¹See Appendix B - Glossary of terms - for an explanation on how to use and interpret the predicted (yes/no) rate.

Data removed as extremely low numbers (less than or equal to 10 offenders or 10 offences) make the data unreliable for interpretation.

Italics mean greater than 10 and less than 50 offenders or offences - treat the data with caution.

It should be noted that any offences committed by offenders within the one-year follow up period are not necessarily of the same offence type as the index offence group.

Table A3 (Part 2): Actual and predicted reoffending rates, and frequency and severity rates per 100 offenders, by index offence group

		Number of offenders	Actual reoffending rate	Predicted reoffending rate ¹	Number of offences per 100 offenders	Number of offences per 100 reoffenders	Number of severe offences per 100 offenders
Fraud and forgery	2000 Q1	715	39.7	32.5	152.6	384.2	*
	2002 Q1	661	36.6	33.4	131.6	359.5	*
	2003 Q1	572	32.7	32.3	137.8	421.4	*
	2004 Q1	521	35.1	32.0	120.5	343.2	*
	2005 Q1	529	30.2	30.2	121.7	402.5	*
	2006 Q1	532	27.4	30.2	89.5	326.0	*
Absconding or bail offences	2000 Q1	366	64.2	67.5	323.2	503.4	*
	2002 Q1	389	69.9	68.8	341.4	488.2	3.1
	2003 Q1	429	69.9	67.7	314.7	450.0	*
	2004 Q1	532	69.0	67.8	307.3	445.5	2.8
	2005 Q1	471	67.3	67.3	314.6	467.5	2.8
	2006 Q1	461	69.2	71.2	300.0	433.5	2.4
Taking and driving away and related offences	2000 Q1	2,151	51.8	51.0	248.0	478.4	1.3
	2002 Q1	2,217	50.1	50.5	228.4	456.2	1.2
	2003 Q1	2,055	50.2	50.5	231.5	461.4	0.8
	2004 Q1	1,831	50.2	49.6	201.7	401.5	1.3
	2005 Q1	1,596	49.8	49.8	200.9	403.4	1.4
	2006 Q1	1,487	46.8	49.5	175.4	374.7	1.2
Theft from vehicles	2000 Q1	711	50.8	46.7	202.1	398.1	1.7
	2002 Q1	602	47.3	45.1	206.0	435.1	*
	2003 Q1	513	49.3	47.8	243.9	494.5	*
	2004 Q1	455	54.7	45.8	210.1	383.9	*
	2005 Q1	412	45.1	45.1	191.7	424.7	*
	2006 Q1	503	46.3	44.0	176.7	381.5	*
Other motoring offences	2000 Q1	1,392	52.4	50.6	239.4	457.2	1.0
	2002 Q1	1,588	49.7	50.5	222.6	447.5	0.8
	2003 Q1	1,571	52.3	51.5	233.6	446.5	1.5
	2004 Q1	1,387	52.2	52.5	222.7	426.7	1.4
	2005 Q1	1,172	51.5	51.5	219.6	426.2	1.5
	2006 Q1	1,012	51.7	51.7	210.5	407.3	1.7
Drink driving offences	2000 Q1	249	32.1	27.1	114.5	356.3	*
	2002 Q1	296	39.9	30.4	141.6	355.1	*
	2003 Q1	277	40.8	29.9	128.2	314.2	*
	2004 Q1	277	39.4	30.4	118.1	300.0	*
	2005 Q1	280	28.2	28.2	101.1	358.2	*
	2006 Q1	269	29.0	27.7	82.5	284.6	*
Criminal or malicious damage	2000 Q1	6,328	37.9	39.7	135.5	357.8	0.8
	2002 Q1	6,300	36.9	40.3	122.2	331.2	1.0
	2003 Q1	6,579	37.6	39.8	127.7	339.7	0.8
	2004 Q1	7,643	39.2	39.5	131.8	336.5	1.0
	2005 Q1	7,874	39.2	39.2	121.7	310.4	0.9
	2006 Q1	8,642	38.8	38.8	118.4	304.9	0.8
Drugs import/export/production/supply	2000 Q1	95	31.6	26.4	117.9	373.3	*
	2002 Q1	81	25.9	22.7	112.3	433.3	*
	2003 Q1	98	28.6	24.6	95.9	335.7	*
	2004 Q1	97	27.8	23.3	74.2	266.7	*
	2005 Q1	88	26.1	26.1	60.2	230.4	*
	2006 Q1	55	23.6	27.9	90.9	384.6	*
Drugs possession/small scale supply	2000 Q1	2,652	36.3	36.6	118.6	326.3	0.5
	2002 Q1	3,362	33.0	35.6	103.4	312.8	0.7
	2003 Q1	3,523	35.1	36.8	108.1	307.8	0.8
	2004 Q1	3,292	34.3	36.7	105.4	307.4	0.6
	2005 Q1	2,859	36.9	36.9	111.5	301.9	0.7
	2006 Q1	2,976	39.7	38.9	114.6	288.7	0.5
Other	2000 Q1	260	32.3	40.2	105.0	325.0	*
	2002 Q1	244	45.9	48.7	195.9	426.8	*
	2003 Q1	261	40.2	47.2	186.2	462.9	*
	2004 Q1	388	57.2	55.7	312.4	545.9	*
	2005 Q1	766	56.0	56.0	259.9	464.1	*
	2006 Q1	846	57.6	57.9	261.9	455.0	*
Total	2000 Q1	41,176	40.2	39.8	151.4	376.7	0.9
	2002 Q1	40,753	38.5	39.9	142.1	369.3	0.9
	2003 Q1	40,297	39.0	39.6	141.5	362.8	1.0
	2004 Q1	44,153	38.6	39.0	132.4	343.2	1.0
	2005 Q1	45,337	38.4	38.4	125.0	325.5	0.9
	2006 Q1	48,938	38.7	38.4	123.1	318.1	0.8

¹See Appendix B - Glossary of terms - for an explanation on how to use and interpret the predicted (yes/no) rate.

Data removed as extremely low numbers (less than or equal to 10 offenders or 10 offences) make the data unreliable for interpretation.

Italics mean greater than 10 and less than 50 offenders or offences - treat the data with caution.

It should be noted that any offences committed by offenders within the one-year follow up period are not necessarily of the same offence type as the index offence group.

Table A4: Actual and predicted reoffending rates, and frequency and severity rates per 100 offenders, by number of previous offences

		Number of offenders	Actual reoffending rate	Predicted reoffending rate ¹	Number of offences per 100 offenders	Number of offences per 100 reoffenders	Number of severe offences per 100 offenders
No previous offences	2000 Q1	21,416	24.3	24.6	58.7	241.6	0.5
	2002 Q1	20,927	22.2	24.4	51.4	231.3	0.3
	2003 Q1	20,806	22.9	24.4	53.9	235.3	0.5
	2004 Q1	23,295	23.4	24.3	53.3	227.3	0.4
	2005 Q1	24,415	24.2	24.2	52.2	215.9	0.4
	2006 Q1	26,009	24.4	24.1	51.8	211.9	0.4
Between 1 and 2 offences	2000 Q1	10,050	45.2	44.8	148.5	328.6	0.8
	2002 Q1	10,109	42.3	44.4	134.9	318.6	1.1
	2003 Q1	9,986	43.4	44.0	133.4	307.5	0.9
	2004 Q1	10,994	43.6	43.9	132.7	304.3	1.0
	2005 Q1	11,225	42.7	43.5	124.9	292.3	0.9
	2006 Q1	12,575	42.6	43.6	124.7	292.5	0.8
Between 3 and 6 offences	2000 Q1	5,193	62.0	60.0	257.6	415.6	1.6
	2002 Q1	5,195	61.3	60.3	245.3	400.5	1.6
	2003 Q1	5,126	60.6	60.1	251.1	414.6	1.7
	2004 Q1	5,351	61.0	60.1	237.0	388.7	1.9
	2005 Q1	5,301	62.2	60.3	232.6	374.1	1.6
	2006 Q1	5,769	62.0	59.9	227.5	367.2	1.6
Between 7 and 10 offences	2000 Q1	1,912	72.0	70.2	355.9	494.2	2.4
	2002 Q1	1,833	72.9	70.9	349.2	478.8	2.1
	2003 Q1	1,795	74.2	71.1	354.9	478.3	2.3
	2004 Q1	1,897	70.6	70.9	316.9	448.6	2.5
	2005 Q1	1,875	71.1	70.9	313.8	441.4	2.2
	2006 Q1	1,966	74.2	71.9	322.6	435.0	2.2
Greater than 10 offences	2000 Q1	2,605	85.0	82.0	563.4	663.2	2.1
	2002 Q1	2,689	82.9	82.7	534.1	644.0	3.1
	2003 Q1	2,584	84.4	82.8	512.4	606.8	3.6
	2004 Q1	2,616	83.0	82.8	487.8	587.6	2.6
	2005 Q1	2,521	82.5	82.9	464.1	562.2	3.2
	2006 Q1	2,619	83.6	82.9	444.0	531.2	2.6
Total	2000 Q1	41,176	40.2	39.8	151.4	376.7	0.9
	2002 Q1	40,753	38.5	39.9	142.1	369.3	0.9
	2003 Q1	40,297	39.0	39.6	141.5	362.8	1.0
	2004 Q1	44,153	38.6	39.0	132.4	343.2	1.0
	2005 Q1	45,337	38.4	38.4	125.0	325.5	0.9
	2006 Q1	48,938	38.7	38.4	123.1	318.1	0.8

¹See Appendix B - Glossary of terms - for an explanation on how to use and interpret the predicted (yes/no) rate.

Data removed as extremely low numbers (less than or equal to 10 offenders or 10 offences) make the data unreliable for interpretation. *Italics mean greater than 10 and less than 50 offenders or offences - treat the data with caution.*

Table A5 (Part 1): Actual and predicted reoffending rates, and frequency and severity rates per 100 offenders, by index disposal

		Number of offenders	Actual reoffending rate	Predicted reoffending rate ¹	Corrected predicted one-year reoffending rate ²	Number of offences per 100 offenders	Number of offences per 100 reoffenders	Number of severe offences per 100 offenders
Out-of-court disposal	2000 Q1	24,352	28.0	29.5	28.5	73.9	263.5	0.5
	2002 Q1	23,710	24.7	28.4	27.3	60.1	242.7	0.4
	2003 Q1	23,570	25.5	28.3	27.2	62.3	243.9	0.5
	2004 Q1	26,614	26.5	28.2	27.1	63.3	238.3	0.5
	2005 Q1	28,225	27.1	28.2	27.1	61.4	226.5	0.4
	2006 Q1	30,784	27.8	28.5	27.4	64.7	232.9	0.4
First-tier penalty	2000 Q1	8,524	51.0	50.5	50.5	204.6	401.2	1.2
	2002 Q1	8,041	51.7	52.0	52.0	201.5	389.5	1.7
	2003 Q1	9,847	50.0	49.5	49.5	189.3	378.4	1.4
	2004 Q1	10,355	49.0	49.5	49.5	181.6	370.5	1.5
	2005 Q1	9,860	48.9	48.9	48.9	169.2	346.0	1.3
	2006 Q1	10,456	48.0	49.2	49.2	160.4	334.3	1.2
Discharge	2000 Q1	5,661	49.1			195.2	397.4	1.2
	2002 Q1	2,938	48.5			202.6	417.6	2.2
	2003 Q1	2,056	55.6			231.9	417.1	1.3
	2004 Q1	2,224	54.0			219.7	407.2	1.7
	2005 Q1	1,962	57.1			229.4	401.8	1.8
	2006 Q1	2,125	55.4			198.4	357.9	1.8
Fine	2000 Q1	2,647	54.8			225.2	410.8	1.3
	2002 Q1	2,470	54.8			203.2	370.9	1.2
	2003 Q1	1,493	60.4			254.7	421.6	2.4
	2004 Q1	1,582	59.6			234.6	393.6	2.4
	2005 Q1	1,342	58.5			216.7	370.4	1.3
	2006 Q1	1,238	54.5			203.2	372.6	1.5
Referral Order	2000 Q1	*	*			*	*	*
	2002 Q1	495	45.1			170.9	379.4	*
	2003 Q1	5,510	43.2			142.6	329.8	1.1
	2004 Q1	5,840	42.2			136.8	324.4	1.1
	2005 Q1	5,844	41.7			124.6	298.9	1.1
	2006 Q1	6,218	41.6			122.7	295.1	1.0
Reparation Order	2000 Q1	216	53.2			196.8	369.6	*
	2002 Q1	2,138	54.2			205.1	378.7	1.4
	2003 Q1	788	63.2			280.3	443.6	1.5
	2004 Q1	709	66.3			313.1	472.3	2.7
	2005 Q1	712	67.4			280.2	415.6	*
	2006 Q1	875	66.1			275.4	417.0	*
Other disposal	2000 Q1	642	60.1	58.0	62.7	328.7	546.6	1.7
	2002 Q1	829	54.4	58.2	62.9	280.8	516.2	1.7
	2003 Q1	672	66.8	63.1	67.8	340.6	509.8	2.1
	2004 Q1	713	65.6	63.4	68.1	312.8	476.5	2.5
	2005 Q1	650	68.8	64.1	68.8	312.2	453.9	1.8
	2006 Q1	750	66.5	64.0	68.7	301.6	453.3	2.1

¹See Appendix B - Glossary of terms - for an explanation on how to use and interpret the predicted (yes/no) rate.

²Corrected predicted rate forces the predicted and actual rates to be equal for the baseline year (2005) by adding or subtracting the difference to the predicted rate. This difference is then applied for all other years.

³Community Rehabilitation Order also includes Community Punishment and Rehabilitation Orders

*Data removed as extremely low numbers (less than or equal to 10 offenders or 10 offences) make the data unreliable for interpretation. *Italics mean greater than 10 and less than 50 offenders or offences - treat the data with caution.*

Table A5 (Part 2): Actual and predicted reoffending rates, and frequency and severity rates per 100 offenders, by index disposal

		Number of offenders	Actual reoffending rate	Predicted reoffending rate ¹	Corrected predicted one-year reoffending rate ²	Number of offences per 100 offenders	Number of offences per 100 reoffenders	Number of severe offences per 100 offenders
Community penalty	2000 Q1	6,746	63.7	57.5	61.9	302.6	474.7	1.7
	2002 Q1	7,214	62.4	58.1	62.6	286.4	459.0	1.6
	2003 Q1	5,422	69.1	63.5	67.9	331.0	478.8	2.1
	2004 Q1	5,656	67.2	62.4	66.9	304.2	452.8	1.8
	2005 Q1	5,758	67.2	62.8	67.2	298.2	443.8	2.1
	2006 Q1	6,131	69.3	62.4	66.8	293.6	423.9	2.0
Attendance Centre Order	2000 Q1	1,777	60.4			264.3	437.7	1.9
	2002 Q1	857	59.5			277.2	465.9	2.2
	2003 Q1	602	67.8			303.2	447.3	2.8
	2004 Q1	579	63.0			293.6	465.8	2.2
	2005 Q1	594	63.1			258.1	408.8	2.4
	2006 Q1	582	64.9			239.9	369.3	*
Supervision Order	2000 Q1	2,722	68.8			346.7	504.1	2.1
	2002 Q1	2,335	68.6			345.7	503.9	1.7
	2003 Q1	2,166	72.9			372.3	511.0	2.2
	2004 Q1	2,334	71.3			338.6	475.3	1.8
	2005 Q1	2,409	72.9			341.7	468.8	2.2
	2006 Q1	2,602	74.0			335.9	453.8	2.7
Action Plan Order	2000 Q1	168	66.1			272.6	412.6	*
	2002 Q1	2,218	57.8			234.0	405.2	1.3
	2003 Q1	1,121	65.1			288.7	443.3	1.4
	2004 Q1	1,102	63.5			262.2	412.7	1.7
	2005 Q1	1,132	60.9			230.5	378.7	1.7
	2006 Q1	1,196	62.3			245.1	393.4	0.9
Community Rehabilitation Order ³	2000 Q1	983	66.5			339.5	510.2	1.3
	2002 Q1	839	67.6			315.5	466.8	1.5
	2003 Q1	787	69.5			341.7	491.6	1.8
	2004 Q1	793	65.8			318.3	483.5	1.5
	2005 Q1	735	67.6			317.4	469.4	*
	2006 Q1	675	68.4			300.7	439.4	*
Community Punishment Order	2000 Q1	983	52.4			219.6	419.2	*
	2002 Q1	761	53.1			232.1	437.1	1.6
	2003 Q1	534	62.0			259.9	419.3	2.2
	2004 Q1	515	57.5			218.1	379.4	*
	2005 Q1	500	55.2			231.2	418.8	2.2
	2006 Q1	352	67.9			246.3	362.8	*
Curfew Order	2000 Q1	113	66.4			289.4	436.0	*
	2002 Q1	204	67.6			299.0	442.0	*
	2003 Q1	212	72.6			350.9	483.1	*
	2004 Q1	333	76.3			320.4	420.1	*
	2005 Q1	388	71.1			337.4	474.3	3.4
	2006 Q1	402	72.1			300.0	415.9	4.7
Unknown	2000 Q1	*	*			*	*	*
	2002 Q1	*	*			*	*	*
	2003 Q1	*	*			*	*	*
	2004 Q1	*	*			*	*	*
	2005 Q1	*	*			*	*	*
	2006 Q1	322	64.3			258.4	401.9	*
Custody	2000 Q1	912	75.7	69.5	70.6	482.1	637.2	1.6
	2002 Q1	959	72.9	70.2	71.3	465.9	639.2	3.8
	2003 Q1	786	73.8	70.6	71.7	442.5	599.7	3.6
	2004 Q1	815	76.4	72.0	73.1	414.8	542.7	2.8
	2005 Q1	844	73.1	72.0	73.1	409.5	560.1	3.9
	2006 Q1	817	77.0	71.1	72.2	404.0	524.8	1.7
Total	2000 Q1	41,176	40.2	39.8	39.8	151.4	376.7	0.9
	2002 Q1	40,753	38.5	39.9	39.9	142.1	369.3	0.9
	2003 Q1	40,297	39.0	39.6	39.6	141.5	362.8	1.0
	2004 Q1	44,153	38.6	39.0	39.0	132.4	343.2	1.0
	2005 Q1	45,337	38.4	38.4	38.4	125.0	325.5	0.9
	2006 Q1	48,938	38.7	38.4	38.4	123.1	318.1	0.8

¹See Appendix B - Glossary of terms - for an explanation on how to use and interpret the predicted (yes/no) rate.

²Corrected predicted rate forces the predicted and actual rates to be equal for the baseline year (2005) by adding or subtracting the difference to the predicted rate. This difference is then applied for all other years.

³ Community Rehabilitation Order also includes Community Punishment and Rehabilitation Orders

Data removed as extremely low numbers (less than or equal to 10 offenders or 10 offences) make the data unreliable for interpretation.

Italics mean greater than 10 and less than 50 offenders or offences - treat the data with caution.

Table A6: Actual and predicted reoffending rates, and frequency and severity rates per 100 offenders, by ethnicity

		Number of offenders	Actual reoffending rate	Predicted reoffending rate ¹	Number of offences per 100 offenders	Number of offences per 100 reoffenders	Number of severe offences per 100 offenders
White	2000 Q1	35,815	41.1	40.4	157.1	381.9	0.9
	2002 Q1	35,305	39.4	40.6	147.7	375.1	0.9
	2003 Q1	34,952	40.0	40.2	147.2	368.5	1.0
	2004 Q1	38,211	39.5	39.6	137.4	347.5	1.0
	2005 Q1	39,511	38.9	38.9	127.9	328.3	0.9
	2006 Q1	41,850	39.6	39.2	127.0	320.7	0.8
Black	2000 Q1	2,810	43.6	45.6	148.6	341.2	1.4
	2002 Q1	2,802	41.3	46.0	134.2	324.8	1.6
	2003 Q1	2,725	43.4	46.7	139.5	321.3	1.8
	2004 Q1	3,025	41.3	45.5	133.9	324.3	1.3
	2005 Q1	2,943	45.4	45.4	140.6	309.5	1.7
	2006 Q1	3,391	46.2	45.7	146.5	317.2	1.4
Asian	2000 Q1	1,431	28.9	29.2	92.2	319.4	*
	2002 Q1	1,425	30.4	29.5	96.3	316.9	0.8
	2003 Q1	1,399	28.2	29.5	86.9	307.8	*
	2004 Q1	1,470	28.8	29.2	82.1	285.3	*
	2005 Q1	1,435	29.3	29.3	87.3	298.3	*
	2006 Q1	1,675	27.9	28.9	75.8	271.4	*
Other	2000 Q1	153	26.8	24.6	68.6	256.1	*
	2002 Q1	171	26.9	23.7	70.8	263.0	*
	2003 Q1	209	20.6	22.9	53.6	260.5	*
	2004 Q1	196	30.1	24.2	88.8	294.9	*
	2005 Q1	184	23.9	23.9	60.3	252.3	*
	2006 Q1	186	30.6	23.5	79.0	257.9	*
Not recorded	2000 Q1	967	13.9	16.2	48.6	350.7	*
	2002 Q1	1,050	13.0	17.0	46.2	356.6	*
	2003 Q1	1,012	13.1	17.3	43.2	328.6	*
	2004 Q1	1,251	15.5	16.7	42.4	273.2	*
	2005 Q1	1,264	17.6	17.6	51.8	295.0	*
	2006 Q1	1,836	15.2	17.0	39.5	260.2	*
Total	2000 Q1	41,176	40.2	39.8	151.4	376.7	0.9
	2002 Q1	40,753	38.5	39.9	142.1	369.3	0.9
	2003 Q1	40,297	39.0	39.6	141.5	362.8	1.0
	2004 Q1	44,153	38.6	39.0	132.4	343.2	1.0
	2005 Q1	45,337	38.4	38.4	125.0	325.5	0.9
	2006 Q1	48,938	38.7	38.4	123.1	318.1	0.8

¹See Appendix B - Glossary of terms - for an explanation on how to use and interpret the predicted (yes/no) rate.

²Data removed as extremely low numbers (less than or equal to 10 offenders or 10 offences) make the data unreliable for interpretation. *Italics mean greater than 10 and less than 50 offenders or offences - treat the data with caution.*

Table A7: Number and proportion of offences committed during the one-year follow up period, by offence group

	2000 Q1	2002 Q1	2003 Q1	2004 Q1	2005 Q1	2006 Q1
Number of offences	62,344	57,899	57,028	58,462	56,684	60,245
Violence (serious)	262	275	312	307	296	282
Violence (non serious)	7,143	7,599	8,085	9,797	10,366	11,928
Robbery	981	1,120	1,003	1,241	1,090	1,572
Public order or riot	4,781	4,638	4,946	5,239	4,997	5,966
Sexual	55	90	79	109	122	133
Sexual (child)	81	66	63	70	72	49
Soliciting or prostitution	41	17	22	21	*	*
Domestic burglary	1,822	1,683	1,477	1,502	1,509	1,743
Other burglary	2,345	1,988	1,626	1,705	1,678	1,727
Theft	11,434	7,905	7,525	7,798	8,072	8,223
Handling	1,582	1,330	1,134	1,046	894	902
Fraud and forgery	1,296	830	793	836	573	508
Absconding or bail offences	3,828	3,625	3,606	3,521	2,940	2,765
Taking and driving away and related offences	3,863	3,546	3,006	2,731	2,325	2,207
Theft from vehicles	1,114	897	820	710	704	864
Other motoring offences	11,820	11,901	11,410	9,013	7,246	6,460
Drink driving	544	599	579	455	379	392
Criminal or malicious damage	6,046	5,876	6,261	7,202	7,323	8,292
Drugs import/export/production/supply	105	126	121	191	158	177
Drugs possession/small scale supply	2,736	3,080	3,012	2,552	2,698	2,715
Other	465	708	1,148	2,416	3,240	3,336
Proportion of all offences						
Violence (serious)	0.4	0.5	0.5	0.5	0.5	0.5
Violence (non serious)	11.5	13.1	14.2	16.8	18.3	19.8
Robbery	1.6	1.9	1.8	2.1	1.9	2.6
Public order or riot	7.7	8.0	8.7	9.0	8.8	9.9
Sexual	0.1	0.2	0.1	0.2	0.2	0.2
Sexual (child)	0.1	0.1	0.1	0.1	0.1	0.1
Soliciting or prostitution	0.1	0.0	0.0	0.0	*	*
Domestic burglary	2.9	2.9	2.6	2.6	2.7	2.9
Other burglary	3.8	3.4	2.9	2.9	3.0	2.9
Theft	18.3	13.7	13.2	13.3	14.2	13.6
Handling	2.5	2.3	2.0	1.8	1.6	1.5
Fraud and forgery	2.1	1.4	1.4	1.4	1.0	0.8
Absconding or bail offences	6.1	6.3	6.3	6.0	5.2	4.6
Taking and driving away and related offences	6.2	6.1	5.3	4.7	4.1	3.7
Theft from vehicles	1.8	1.5	1.4	1.2	1.2	1.4
Other motoring offences	19.0	20.6	20.0	15.4	12.8	10.7
Drink driving	0.9	1.0	1.0	0.8	0.7	0.7
Criminal or malicious damage	9.7	10.1	11.0	12.3	12.9	13.8
Drugs import/export/production/supply	0.2	0.2	0.2	0.3	0.3	0.3
Drugs possession/small scale supply	4.4	5.3	5.3	4.4	4.8	4.5
Other	0.7	1.2	2.0	4.1	5.7	5.5

* Data removed as extremely low numbers (less than or equal to 10 offenders or 10 offences) make the data unreliable for interpretation. *Italics mean greater than 10 and less than 50 offenders or offences - treat the data with caution.*

Table A8: Number of offences committed during the one-year follow up period, by index offence group and reoffence group, 2006 cohort

Index offence group	Reoffence group	Number of offenders	Reoffence group																	Total number of offences				
			Violence (serious)	Violence (non serious)	Robbery	Public order or riot	Sexual	Sexual (child)	Soliciting or prostitution	Domestic burglary	Other burglary	Theft	Handling	Fraud and forgery	Absconding or bail offences	Taking and driving away and related offences	Theft from vehicles	Other motoring offences	Drink driving		Criminal or malicious damage	Drugs import/export/production/supply	Drugs possession/small scale supply	Other
Violence (serious)	273	*	43	*	36	*	*	*	*	*	19	*	*	*	*	28	37	*	13	*	225			
Violence (non serious)	12,213	65	3,402	282	1,356	24	18	*	254	277	1,407	136	77	475	349	145	885	78	2,002	15	420	539	12,209	
Robbery	747	*	201	135	87	*	*	*	29	22	133	19	*	45	42	26	144	*	116	13	78	60	1,163	
Public order or riot	4,394	32	1,317	113	1,032	*	*	*	96	115	601	67	33	231	135	37	473	50	776	14	203	259	5,596	
Sexual	133	*	19	*	*	*	*	*	*	*	*	*	*	*	*	*	*	*	16	*	*	*	83	
Sexual (child)	170	*	*	*	*	*	*	*	*	*	*	*	*	*	*	*	*	*	*	*	*	*	32	
Soliciting or prostitution	*	*	*	*	*	*	*	*	*	*	*	*	*	*	*	*	*	*	*	*	*	*	*	
Domestic burglary	1,024	*	297	66	147	*	*	*	184	86	331	33	16	113	114	40	283	12	228	*	72	135	2,171	
Other burglary	1,464	14	343	67	181	22	*	*	118	208	322	63	28	146	134	64	394	16	305	*	122	134	2,685	
Theft	10,939	40	1,889	285	956	22	*	*	326	345	2,642	194	147	575	338	145	973	51	1,412	24	411	440	11,223	
Handling	796	*	180	42	92	*	*	*	59	47	140	45	20	83	64	29	197	*	119	*	60	48	1,245	
Fraud and forgery	532	*	98	11	45	*	*	*	13	19	73	14	20	30	11	*	49	*	47	*	16	16	476	
Absconding or bail offences	461	*	234	53	101	*	*	*	51	40	180	18	12	130	53	20	164	*	141	*	62	103	1,383	
Taking and driving away and related offences	1,487	13	336	60	167	*	*	*	87	80	274	48	13	141	223	60	603	26	258	*	88	123	2,608	
Theft from vehicles	503	*	115	17	55	*	*	*	36	40	107	12	*	43	60	41	148	*	97	*	46	57	889	
Other motoring offences	1,012	13	278	47	145	*	*	*	57	46	157	36	13	97	154	46	631	19	151	15	114	106	2,130	
Drink driving	269	*	28	*	28	*	*	*	*	*	26	*	*	*	*	*	54	*	29	*	*	*	222	
Criminal or malicious damage	8,642	42	2,314	225	1,087	21	*	*	267	270	1,273	134	90	375	329	128	830	67	1,998	20	327	422	10,228	
Drugs import/export/production/supply	55	*	*	*	*	*	*	*	*	*	*	*	*	*	*	*	*	*	*	*	*	11	*	50
Drugs possession/small scale supply	2,976	14	555	114	288	*	*	*	93	76	344	53	13	176	101	41	392	27	375	45	563	136	3,410	
Other	846	*	273	46	147	*	*	*	66	49	177	26	14	80	81	24	202	12	176	*	94	732	2,216	
Total	48,938	282	11,928	1,572	5,966	133	49	*	1,743	1,727	8,223	902	508	2,765	2,207	864	6,460	392	8,292	177	2,715	3,336	60,245	

*Data removed as extremely low numbers (less than or equal to 10 offenders or offences) make the data unreliable for interpretation.
Italics mean greater than 10 and less than 50 offenders or offences - treat the data with caution.

Appendix B: Glossary of terms

Disposal types

Index disposal

The index disposal of the offender is either the type of non-custodial court disposal the offender started, the out-of-court disposal given, or custody, for an offender released from prison, a Secure Training Centre (STC) or Secure Children's Home (SCH), in the 1st quarter of the relevant year. This is the disposal the offender receives for their index offence.

Out-of-court disposal

For the purposes of this report, this can be either a reprimand or a final warning. A reprimand is a formal verbal warning given by a police officer to a juvenile offender who admits they are guilty for a minor first offence. A final warning is similar to a reprimand, but can be used for either the first or second offence, and includes an assessment of the juvenile to determine the causes of their offending behaviour and a programme of activities is designed to address them.

First-tier penalties

- **Discharge** – a juvenile offender is given an absolute discharge when they admit guilt, or are found guilty, with no further action taken. An offender given a conditional discharge also receives no immediate punishment, but is given a set period, during which if they commit a further offence, they can be brought back to court and re-sentenced.
- **Fine** – the size of the fine depends on the offence committed and the offender's financial circumstances. In the case of juveniles under 16, the fine is the responsibility of the offender's parent or carer.
- **Referral order** – for juveniles pleading guilty and for whom it is their first time at court (unless the offence is so serious it merits a custodial sentence or it is of a relatively minor nature). The offender is required to attend a Youth Offender Panel to agree a contract, aimed to repair the harm caused by the offence and address the causes of the offending behaviour.
- **Reparation order** – the offender is required to repair the harm caused by their offence either directly to the victim or indirectly to the community.

Community penalties

- **Attendance centre order** – the offender is required to attend an attendance centre, designed to put a limit on young offenders' leisure time. The attendance centre gives offenders basic skills, and runs victim awareness sessions.

- **Supervision order** – this can last up to 3 years and can have conditions attached when the offence is more serious, for example drug treatment, curfews, or residential requirements. Offenders are also required to take part in activities such as repairing the harm done by their offence, and participate in programmes to address their offending behaviour.
- **Action plan order** – an intensive, community-based programme, specifically tailored to the risks and needs of the offender.
- **Community rehabilitation order** – for juveniles aged 16-17. It is a community sentence which may have additional requirements such as residence, probation centre attendance or treatment for drug, alcohol or mental health problems.
- **Community punishment order** – for juveniles aged 16-17. The offender is required to undertake unpaid community work.
- **Curfew order** – the offender is required to remain for set periods of time at a specified place.

Other disposals

A range of other disposals, for example otherwise dealt with on conviction, compensation orders, fines, compensation or costs.

Custody

The offender is required to serve a sentence in a Secure Training Centre, a Secure Children's Home or a Youth Offender Institution. On release, the offender will continue to be supervised in the community.

Index offence

The index offence is the offence the offender committed in order to be serving either the custodial sentence, non-custodial court disposal or out-of-court disposal, for which they entered the relevant cohort.

Offence group

There are around 3,000 offence codes on the Police National Computer. These have been classified into 21 groups: violence (non serious), violence (serious), robbery, public order or riot, sexual, sexual (child), soliciting or prostitution, domestic burglary, other burglary, theft, handling, fraud and forgery, absconding or bail offences, taking and driving away and related offences, theft from vehicles, other motoring offences, drink driving offences, criminal or malicious damage, drugs import/export/production/supply and drugs possession/small scale supply and other. The classification adopted owes much to original work done by Taylor (1999) and enhancements developed by Lancaster University. Additionally, violence has been split into two separate groups of violence (serious) and violence (non serious).

Proven reoffending

An offender is said to have committed a proven reoffence if the offender receives a conviction at court for the reoffence, or is given an out-of-court disposal. For the purposes of the statistics in this report, the reoffence must have been committed within the one-year follow up period, and the conviction or out-of-court disposal must follow either within that one-year follow up, or in a further 6 months, which is to allow time for the offence to be proven at court.

Public Service Agreement 23 (Comprehensive Spending Review 2007)

Public Service Agreements (PSA) set out government commitments and the outcomes the Government wants to achieve in a spending period (2008-2011). PSA 23 is entitled Make Communities Safer. Priority Action 4 of the PSA 23 is to reduce reoffending through the improved management of offenders and contains indicators on reducing reoffending. For more information on PSA 23 please visit the [HM Treasury website](#).

Reoffending measures

- **Actual (yes/no) rate** – The actual number of offenders in the cohort reoffending at least once during the one-year follow up period, where the reoffence resulted in a conviction at court or an out-of-court disposal. The actual (yes/no) reoffending rate is presented in this report as a percentage of the total number of offenders in the cohort.
- **Frequency rate** – The actual number of offences the cohort committed during the one-year follow up period which resulted in a conviction at court or an out-of-court disposal. The actual proven one-year frequency reoffending rate is produced by calculating the number of proven offences per 100 offenders. For added information, the number of proven reoffences per 100 reoffenders is also available in the statistical tables in Appendix A.
- **Predicted (yes/no) rate** – The predicted (yes/no) reoffending rate is different from the other three measures in the sense that it does not come from actual proven reoffences, but from a statistical model created for the new baseline year of 2005.

This rate is presented as the percentage of the offenders who are estimated to reoffend in a given year after changes in offender characteristics have been controlled for. There is no predicted rate for the frequency or severity of reoffending, as yet, due to the complex nature of the variables being considered, but work continues in this area.

The predicted (yes/no) reoffending rate helps to put the actual proven (yes/no) reoffending rate into context and establish, in our case, whether there is a real change from 2005, just as the examination pass rate in a school will be related to its intake. For example, given the characteristics of offenders in any particular year, the predicted rate would give us an expected reoffending rate that can be compared with the actual proven (yes/no) rate. If the predicted (or expected) reoffending rate is higher

than the actual proven rate, then we judge that there has been a reduction in reoffending when the offender characteristics have been taken into account. The usual way of reporting this is as a percentage change of the predicted rate: $(\text{actual} - \text{predicted}) / (\text{predicted})$.

- **Severity rate** – The actual number of the most serious⁴ offences the cohort committed during the one-year follow up period which resulted in a conviction at court or an out-of-court disposal. As with the frequency rate, the severity rate is produced by calculating the number of proven severe reoffences per 100 offenders, and is therefore a subset of the frequency rate. For the full list of most serious offences please consult Appendix G.

⁴ Most serious offences are offences involving death (e.g. murder), serious violence against the person (e.g. grievous bodily harm) and some sexual offences. For the full list of most serious offences please consult appendix G at the end of this document.

Appendix C: Measuring reoffending

Introduction

Every known measure of reoffending has its drawbacks. Measures associated with using official records of reoffending or reconviction have been particularly well documented (see Lloyd et al., 1994, for example) and include the fact that they under-record actual offending behaviour and that they are partly determined by decisions on the part of criminal justice practitioners. However, other measures (e.g. self-report, re-arrest rates) also have disadvantages. For example, self-report studies rely upon respondents being honest about their offending behaviour and re-arrests may not be subsequently convicted.

Measuring reoffending

Frequency of reoffending per 100 offenders is the main measure of reoffending and it used as the headline rate for PSA 23. PSA 23 also includes a measure of the number of most serious offences per 100 offenders.

The inclusion of the frequency rate enables us to measure progress on the number of offences committed by the cohort and not only whether they reoffended or not, as in the current actual (yes/no) measure. The rate of most serious reoffending allows a wider understanding of the type of reoffending occurring. These measures are likely to provide a better and more reliable picture of reoffending, and may allow a better understanding of the impact of offender management.

Actual and predicted (yes/no) reoffending rates from the previous spending review of 2002 continue to be measured, but are based on the new 2005 predictive model

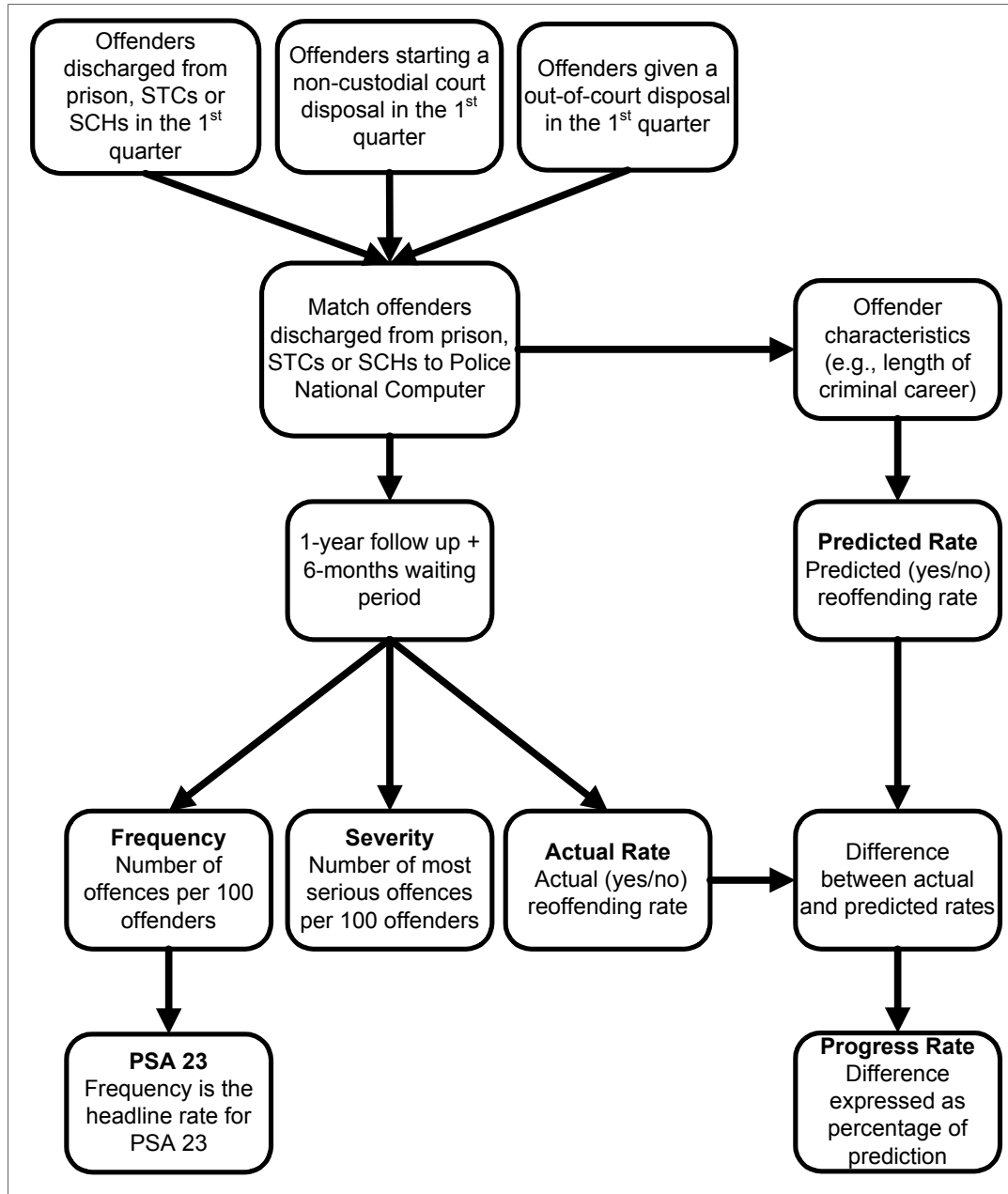
Process

Under PSA 23 (see Appendix B for more information) the starting point for the reoffending indicators is to take all offenders discharged custody (either from prison, STCs or SCHs) or those given an out-of-court disposal or commencing a non-custodial court disposal (aged 10-17 at discharge or commencement) in the 1st quarter of a year (between 1st January and 31st March). Offenders' criminal behaviour is then tracked over the following one year. Any offence committed in this one-year period which is proven by a court conviction or an out-of-court disposal (either in the one-year period, or in a further six months) counts as proven reoffending. This enables us to calculate the frequency of reoffending, the number of most serious offences and the actual (yes/no) reoffending rate. The frequency rate is our headline measure used to measure progress for PSA 23.

Separately, the predicted (yes/no) reoffending rate is calculated through a statistical model of the 2005 cohort using the actual (yes/no) reoffending rate and offender characteristics like gender, age and criminal history (see

Appendix E for more information). The predicted rate is then compared to the actual (yes/no) rate. This difference is expressed as a percentage of the predicted rate – the progress rate. Figure C1 describes the entire PSA 23 process.

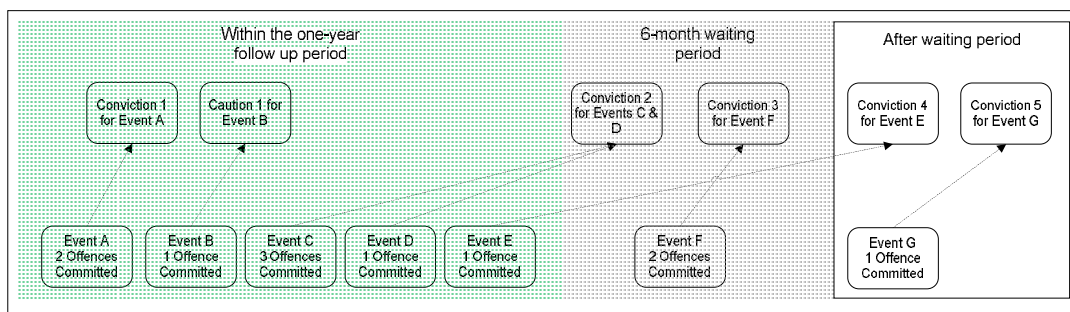
Figure C1: PSA reoffending statistics: schematic summary of the overall PSA 23 process



What counts as a reoffence?

Figure C2 below aims to graphically illustrate why different offences are included or not in the reoffending measures for an example offender.

Figure C2: Diagram summarising which reoffences are included in the new measures



Events A-E all occur in the one year follow up period, but Events F and G are outside this period, so would not be counted. Event E, even though the offence took place in the one-year follow up period, would not be counted, as the conviction did not occur within either the one-year follow up period, or the further six month waiting period. The offender has therefore committed 7 proven offences during the one-year follow up period (2 for event A, 1 for event B, 3 for event C and 1 for event D).

Multiple Offender Entries (MOEs)

An MOE is an individual offender who, after entering the cohort, commits a reoffence and is discharged from custody or commences a community sentence or out-of-court disposal within the same 1st quarter period in a given year. MOEs are excluded from our analysis.

Figure C3: Example of an offender with Multiple Offender Entries

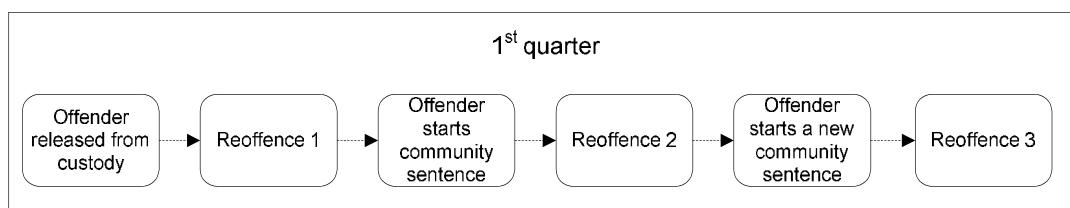


Figure C3 illustrates an example of an MOE. If MOEs were not excluded this offender would appear three times in our cohort – released once from custody and starting two community sentences within the same 1st quarter. Additionally, for the frequency measure, this offender would have committed at least 3 reoffences after the first time it entered the cohort, at least 2 offences after the second time and at least 1 offence after the last community sentence at the end of the quarter. By excluding MOEs the offender would be included in the cohort only from his release from custody and with at least 3 reoffences – this avoids double counting of reoffences. For the sake of consistency this has been applied to all measures in this report.

Therefore, any offender discharged from custody or commencing a non-custodial court or out-of-court disposal more than once within the first quarter of the same year is considered to be an MOE and only his **first** discharge from custody or commencement of a non-custodial court or out-of-court disposal is considered to be the index offence with all other offences counted as reoffences.

Table C4 shows the number of offenders who are MOEs and their respective number of entries. Most MOE offenders appear twice in the cohort and the number of MOEs has been constant, at around 7% of the entire cohort of offenders, since 2000.

Table C4: Number of offenders with MOEs and their respective number of entries for 2000, 2002, 2003, 2004, 2005 and 2006 cohorts

Multiple Offender						
Entries (MOEs)	2000 Q1	2002 Q1	2003 Q1	2004 Q1	2005 Q1	2006 Q1
2x	2,785	2,498	2,511	2,853	2,681	3,066
3x	306	268	245	304	255	321
4x	39	35	37	48	38	49
5x	4	8	5	4	12	9
6x	2	1		4		1
7x						
8x			1			
Total MOEs	3,136	2,810	2,798	3,213	2,986	3,446
% of total cohort	7.6%	6.9%	6.9%	7.3%	6.6%	7.0%

Appendix D: Data quality statement

Summary

The data underpinning the results are felt to be broadly robust. Considerable work has been carried out ensuring data quality, and the data have been used for research publications. Scrutiny of the data source continues in order to ensure the data remains reliable.

Risks to data quality

The National Audit Office (NAO) has identified six risk factors in its review of the reporting of PSA targets (NAO, 2005). The following commentary addresses these.

1. Complexity of data collection

The data required for the PSA 23 target involve a range of data sources (prison data, probation data, and the criminal records) from a range of agencies (individual prisons, Youth Justice Board and different police forces). These figures have been derived from the police's administrative I.T. system, which, as with any large scale recording system, is subject to possible errors with data entry and processing. Additionally, the Ministry of Justice copy of the Police National Computer (PNC) is continually being revised as police add and amend information, so figures published in this report are likely to change slightly with time.

2. Complexity of data processing and analysis

The data processing involved for the PSA 23 target is complex, and requires the extraction of criminal histories that can span a number of decades, and the subsequent matching of these histories against the Secure Training Centres and Secure Children's Homes, and prison discharges in order to generate a statistical model. The components are:

Matching offender records

2A. Matching offender records

This process involves matching prison and STCs and SCHs discharges with the Police National Computer database. The process uses automated matching routines that look at offenders' surnames, initials, and dates of birth, using direct name matching along with a variety of 'sounds like' algorithms. The matching algorithm also searches through PNC held information on alias names and dates of birth for offenders. However, not all offenders are matched and a thorough analysis of bias in the matching system has yet to be undertaken. Table D1 below shows that the overall matching rates between 2000 and 2006 have remained high and have been improving slightly. Additionally, matching rates are similar for both prison discharges data and YJB data on Secure Training Centres and Secure Children's Homes.

Table D1: Matching rates for the different data sources for 2000, 2002, 2003, 2004, 2005 and 2006 cohorts

	2000 Q1	2002 Q1	2003 Q1	2004 Q1	2005 Q1	2006 Q1
Prison						
Prison discharges	1,119	987	949	857	889	848
Automatically matched to the PNC	1,057	929	898	808	836	803
Manually matched to the PNC	35	22	25	33	28	31
Not matched	4	9	6	2	5	4
Total matches	1,092	951	923	841	864	834
Percentage matched	97.6%	96.4%	97.3%	98.1%	97.2%	98.3%
Youth Justice Board (YJB) secure accommodation						
YJB secure accommodation discharges	66	344	406	455	425	425
Automatically matched to the PNC	55	310	382	424	400	401
Manually matched to the PNC	6	23	18	25	17	16
Not matched	1	1	0	1	1	1
Total matches	61	333	400	449	417	417
Percentage matched	92.4%	96.8%	98.5%	98.7%	98.1%	98.1%
Total percentage matched	97.3%	96.5%	97.6%	98.3%	97.5%	98.3%

The total number of matched offenders for prison and Secure Training Centres and Secure Children's Homes discharges is substantially higher than the final figure for the cohorts. The main reasons for these discrepancies are:

- Conviction dates for the beginning of the non-custodial court disposal or custodial sentence do not match the conviction date within seven days of the criminal records database (PNC);
- The offence was not dealt with by a Home Office police force – this ensures that only offences in England and Wales are counted;
- Exclusion of all offenders where the index offence is a breach, since we are only interested in new offences; and,
- Exclusion of Multiple Offender Entries (as outlined in Appendix C).

2B. Counting rules

The counting rules for choosing which prison discharges to include offer a variety of choices. For instance, it makes little sense to include offenders deported on release or because they have died. These counting rules were enumerated and discussed to ensure a more accurate and consistent count.

2C. The extraction of the criminal histories

To quality assure the extraction of criminal histories, a small set of random samples of offenders was taken after the analysis to check, via a basic validation, that outputs of the SQL (Structured Query Language) program are accurate outcomes and the Ministry of Justice is confident that this process has been successful.

3. Level of subjectivity

There is relatively little subjectivity in the system. Occasional judgements are required (e.g. where to classify an offence) but these will not significantly influence the results.

4. Maturity and stability of the data system

The system is well established having been used several times to produce statistics for publication for the existing one-year actual and predicted (yes/no) rates. Nonetheless, vigilance continues to be exercised to ensure the validity of the results.

5. Expertise of those who operate the system

The PNC, prison and YJB datafeeds are continually monitored and improvement work is regularly undertaken to improve the reliability and the accuracy of datasets. The internal processing of the results within the Ministry of Justice has been subject to dip sampling of criminal histories and the statistical model has been extensively tested.

6. Use of data to manage and reward performance

The data are not currently used to manage the performance of individuals or teams.

Improvements to the quality of the PNC data held by the Ministry of Justice

The quality of the information recorded on the PNC is generally assumed to be relatively high as it is an operational system on which the police depend, but analysis can reveal errors that are typical when handling administrative datasets of this scale. A number of improvements are routinely carried out:

- Improvements to the coding and classification of offences and court disposals, including the reduction of uncoded offences, the reduction in the use of miscellaneous offence codes and the clarification of the coding of breach offences;
- Improvements to the methods used to identify the primary offence, where several offences are dealt with on the same occasion, and the methods used to identify the primary disposal, where an offence attracts more than one court disposal; and,
- Removal of some duplication of records within the database resulting in improvements to the efficiency and reliability of the matching process.

Appendix E: Statistical modelling

Introduction

The characteristics of offenders are likely to be systematically different over time, and the Criminal Justice System aims to target particular sentences to offenders most likely to benefit most from that type. It is therefore, important to note that one can neither reach firm conclusions about changes in rates over time, nor about the relative effectiveness of different sentence types from actual reoffending rates.

The Ministry of Justice has developed a new predicted (yes/no) rate for the year 2005 in a similar way to the PSA 2000-2006 predicted (yes/no) rate for the year 2000 (Medhurst, C. and Cunliffe, J., 2007). This new 2005 predicted (yes/no) rate can only predict the actual (yes/no) rate and there are currently no predictions of the frequency and severity rates.

Predicted or expected (yes/no) rates (see Lloyd et al., 1994, for a discussion) are used to take account of some of the differences in characteristics of offenders. Accordingly they can give a more meaningful measure of the change that has occurred in the rate of reoffending than can be obtained using the actual (yes/no) rates. If the composition of the groups of offenders being compared differs significantly over a time period, so that the type of offenders in one year is inherently more (or less) likely to reoffend, this may result in a spurious rise or fall in the actual (yes/no) rates even when there may be no 'real' difference for similar offenders over that time. Hence the actual (yes/no) rates should be compared with the expected rates using a model based on data from an earlier year, and changes in reoffending rates measured by comparing the actual rate with the rate that would be expected given this group of offenders.

Statistical model

The 2005 statistical model is an update and improvement on the 2000 logistic regression model and includes a range of offender characteristics available in the Police National Computer (PNC), such as age, gender, offence group and criminal history. However, research has shown that other factors, for which data on these samples are not available, such as drug and alcohol use, employment, accommodation and marital background are likely to be significantly related to reoffending (see, for example, May, 1999).

The logistic regression model behind the 2005 predicted rate provides a probability of reoffending for each offender and identifies the statistically significant set of variables that are related to reoffending. Aggregated predicted (yes/no) rates are also only valid for terms included in the final model. Any predicted rates for groups of offenders that have a common characteristic that is not in the final model (e.g., employment status or disposal type) can suffer from statistical biases and are, therefore, unreliable.

For the 2005 model additional developments were included to ensure that the predicted rate model was a more parsimonious model, more robust against changes in the number of offenders, and that interaction terms and non-linear terms were included where appropriate. The final decision for inclusion or exclusion of particular variables was heavily influenced by their statistical significance (typically $p < 0.10$).

The Ministry of Justice believes that the method used for the construction of the statistical model for producing predicted rates is robust, fit for purpose and it has been peer reviewed by an academic statistician.

Variables included

The following notes provide some further detail on the 2005 model and show the relative impacts of different variables when holding all other variables constant. The coefficients are shown in Appendix F.

Gender

Gender is included in the model as a categorical variable separating out males and females. Generally, males are more likely to reoffend than females.

Age

Age is included in the model as a categorical variable separating offenders into seven age bands. Generally, older offenders are more likely to reoffend than younger offenders.

Index offence

The index offence represents the offence that enabled the offender to become part of the cohort. Index offences were classified into 21 broad categories and their relative coefficients are shown in relation to the reference category violence (non serious). To ensure the reliability and replicability of the model coefficients, any index offences with low numbers were grouped with 'other' index offence group.

Ethnicity

Ethnicity is derived from the PNC and reflects the officer's view of the offender's ethnicity. Thus, ethnicity in this model should be taken as a proxy for the actual ethnicity and the results should not be over-interpreted because any biases in the assessment are unknown. Ethnicity was a statistically significant factor, making it an important factor to control for and therefore it was included in the model.

Copas rate

The Copas rate (Copas and Marshall, 1998) controls for the rate at which an offender has built up convictions throughout their criminal career. The higher the rate, the more convictions an offender has in a given amount of time, and the more likely it is that an offender will reoffend within one year.

The Copas rate formula is:

$$\text{copas rate} = \log_e \left(\frac{\text{Number of court appearances or cautions} + 1}{\text{Length of criminal career in years} + 10} \right)$$

Total number of previous offences resulting in a conviction at court

The total number of previous offences is a significant factor in predicting the likelihood of a reoffence. The previous offending categories counted convictions only, and not out-of-court disposals which were found to be insignificant.

Indicator of previous offending types

This takes into account the presence of prior offences in the relevant categories.

Interaction terms

Interaction terms are calculated by multiplying two factors together. The inclusion of these terms 'tunes' the effects of the individual factors, improving the quality of predictions. This is important because two factors (gender and age) are not completely independent of each other.

Does the statistical model work?

The appropriateness of a logistic model needs to be reviewed both by checking that a statistical model offers sufficient discrimination.

Model assessment

The model is assessed by calculating the level of discrimination between the offenders that reoffended and offenders that did not. The juvenile logistic regression model achieved a 68.7% overall discrimination level on the 2006 cohort (Table E1). A level of discrimination of about 70% was deemed to be acceptable and the model should predict results accurately enough for the predicted rate to be used. The discrimination can also be evaluated by calculating the Area Under Curve (AUC) for the Receiver Operator Characteristic curve. Again, the value for the model was 0.73, which means an acceptable level of discrimination (Hosmer and Lemeshow, 2000, p.162).

It is harder to predict juvenile reoffending because the number of offenders without a criminal history is over 50% making any prediction harder. This is not the same for adults, where the prediction is better, but also the number of offenders without a criminal history is only 11.8%.

Table E1: Classification table for the logistic regression model comparing 2006 prediction with observed values

		Predicted to reoffended within one year?		%
		No	Yes	
Reoffended within one year?	No	22,301	7,699	74.3%
	Yes	7,618	11,320	59.8%

Table E2 shows the assessment for the logistic regression model for the 2000 to 2006 cohorts. All cohorts show a high discriminative power (around 70%) and AUC for the Receiver Operator Characteristic curve of around 0.73. This means that we can be confident of the predictive power of the logistic regression model over the 2000 to 2006 period.

Table E2: Classification table for the logistic regression model comparing prediction with observed values, 2000, 2002, 2003, 2004, 2005 and 2006

	Number of Offenders	Area Under the Curve for the ROC	Classification Table
2000 Q1	41,176	0.73	69.3%
2002 Q1	40,753	0.74	69.5%
2003 Q1	40,297	0.74	69.5%
2004 Q1	44,153	0.73	69.3%
2005 Q1	45,337	0.73	68.9%
2006 Q1	48,938	0.73	68.7%

Appendix F: Coefficients of the statistical model for the 2005 1st quarter baseline cohort

The following table (Table F1) shows the parameter estimates for the various components of the logistic regression model for the predicted one-year reoffending rates.

Each logistic coefficient is multiplied by the variable value for each offender to calculate a linear prediction. To calculate each offenders predicted probability of reoffending after one year we transform the linear prediction Z using the following formula:

$$\text{Predicted Probability of Re-offending} = \frac{\exp(Z)}{1 + \exp(Z)}$$

The exponent of the coefficient is the odds ratio of reoffending corresponding to the particular coefficient and enables us to make comparisons between different categories. For example, an offender with an absconding or bail index offence is 1.64 times more likely to reoffend within one year than an offender with a violence non-serious index offence. For factors with interactions (e.g. age and gender) the interpretation is more complex.

The significance (p-value) gives us an assessment of how significant each variable is in predicting the likelihood of an offender to reoffend within one year. For modelling purposes, a probability value (p-value) of less than 0.05 is considered to be significant.

Table F1: List of variables in the logistic regression model applied to the 1st quarter 2005 data and their respective coefficients

Variables	Logistic Coefficient	Exponent of Coefficient	Significance	Variables	Logistic Coefficient	Exponent of Coefficient	Significance
Constant	0.574	1.776	0.001	Ethnicity			
Gender				White	<i>Reference Category</i>		
Female	<i>Reference Category</i>			Black	0.281	1.325	< 0.001
Male	0.814	2.256	< 0.001	Asian	-0.256	0.774	< 0.001
Age				Other	-0.449	0.607	0.007
10 - 11	<i>Reference Category</i>			Not Recorded	-0.771	0.462	< 0.001
12	0.529	1.697	0.004	General Criminal Career Variables			
13	0.576	1.779	0.001	Copas Rate	1.049	2.854	< 0.001
14	0.548	1.730	0.001	Number of previous offences resulting in a court conviction	0.019	1.019	< 0.001
15	0.357	1.429	0.030	Has committed a previous robbery offence	0.154	1.166	0.056
16	0.143	1.154	0.391	Has committed a previous public order offence	0.169	1.184	< 0.001
17	-0.083	0.921	0.627	Has committed a previous theft offence	0.166	1.181	< 0.001
Index Offence Type				Has committed a previous handling offence	0.121	0.128	0.061
Violence (non-serious)	<i>Reference Category</i>			Has committed a previous taking and driving away offence	0.177	1.194	< 0.001
Violence (serious)	-0.484	0.617	0.002	Has committed a previous theft from vehicles offence	0.159	1.173	0.046
Robbery	0.037	1.038	0.683	Has committed a previous criminal and malicious damage offence	0.155	1.168	< 0.001
Public order	0.159	1.173	< 0.001	Has committed a previous other offence ¹	-0.205	0.815	0.001
Sexual	-0.479	0.619	0.031	Interaction between Age and Gender			
Sexual (child)	-0.917	0.400	< 0.001	Female at any age	<i>Reference Category</i>		
Domestic burglary	0.223	1.250	0.002	Male and aged 10 - 11	<i>Reference Category</i>		
Other burglary	0.141	1.151	0.035	Male and aged 12	-0.499	0.607	0.012
Theft	-0.041	0.959	0.195	Male and aged 13	-0.427	0.652	0.020
Handling	-0.033	0.968	0.672	Male and aged 14	-0.376	0.686	0.035
Fraud and forgery	-0.144	0.866	0.171	Male and aged 15	-0.275	0.760	0.122
Absconding and bail	0.492	1.636	< 0.001	Male and aged 16	-0.223	0.800	0.213
Taking and driving away	0.281	1.325	< 0.001	Male and aged 17	-0.157	0.855	0.388
Theft from vehicles	0.064	1.066	0.564				
Motoring offences (not including drink driving)	0.181	1.198	0.010				
Drink driving	-0.446	0.640	0.002				
Criminal and malicious damage	0.089	1.094	0.008				
Drugs (import/export/production/supply)	-0.613	0.542	0.023				
Drugs (possession/small-scale supply)	-0.078	0.925	0.106				
Other ¹	0.144	1.155	0.103				

¹ Includes other, soliciting and prostitution and offence not recorded

Appendix G: List of most serious (severe) offences

Violence against the person

1. Murder:
 1. Of persons aged 1 year or over.
 2. Of infants under 1 year of age.
2. Attempted murder.
4. Manslaughter, etc:
 1. Manslaughter.
 2. Infanticide.
 3. Child destruction.
5. Wounding or other act endangering life:
 1. Wounding, etc. with intent to do grievous bodily harm, etc. or to resist apprehension.
 2. Shooting at naval or revenue vessels.
 4. Attempting to choke, suffocate, etc. with intent to commit an indictable offence (garrotting).
 5. Using chloroform, etc. to commit or assist in committing an indictable offence.
 6. Burning, maiming, etc. by explosion.
 7. Causing explosions or casting corrosive fluids with intent to do grievous bodily harm.
 8. Impeding the saving of life from shipwreck.
 9. Placing, etc. explosives in or near ships or buildings with intent to do bodily harm, etc.
 10. Endangering life or causing harm by administering poison.
 11. Causing danger by causing anything to be on road, interfering with a vehicle or traffic equipment.
 13. Possession, etc. of explosives with intent to endanger life.
 14. Possession of firearms, etc. with intent to endanger life or injure property, etc. (Group I).
 15. Possession of firearms, etc. with intent to endanger life or injure property, etc. (Group II).
 16. Possession of firearms, etc. with intent to endanger life or injure property, etc. (Group III).
 17. Using, etc. firearms or imitation firearms with intent to resist arrest, etc. (Group I).
 18. Using, etc. firearms or imitation firearms with intent to resist arrest, etc. (Group II).
 19. Using, etc. firearms or imitation firearms with intent to resist arrest, etc. (Group III).
[Group I - Firearms, etc. other than as described in Group II or III.
Group II - Shotguns as defined in s.1 (3)(a) of the Firearms Act 1968.
Group III - Air weapons as defined in s.1 (3)(b) of the Firearms Act 1968]
 20. Use etc. of chemical weapons.
 21. Use of premises or equipment for producing chemical weapons.
 22. Use, threat to use, production or possession of a nuclear weapon.
 23. Weapons related acts overseas.
 24. Use of noxious substances or things to cause harm or intimidate.
 25. Performing an aviation function or ancillary function when ability to carry out function is impaired because of drink or drugs.
 26. Endangering safety at sea/aerodromes.
 27. Torture.
8. Other wounding, etc:
 1. Wounding or inflicting grievous bodily harm (inflicting bodily injury with or without weapon).

33. Racially aggravated wounding or inflicting grievous bodily harm (inflicting bodily injury with or without weapon).
40. Religiously aggravated malicious wounding or GBH.
46. Racially or religiously aggravated malicious wounding or grievous bodily harm.

Sexual offences

17. Sexual assault on a male (previously indecent assault on a male):
 11. Indecent assault on male person under 16 years.
 12. Indecent assault on male person 16 years or over.
 13. Assault on a male by penetration.
 14. Assault of a male child under 13 by penetration.
 15. Sexual assault on a male.
 16. Sexual assault of a male child under 13.
19. Rape:
 2. Man having unlawful sexual intercourse with a woman who is a defective.
 3. Male member of staff of hospital or mental nursing home having unlawful sexual intercourse with female patient.
 4. Man having unlawful sexual intercourse with mentally disordered female patient who is subject to his care.
 7. Rape of a female aged under 16.
 8. Rape of a female aged 16 or over.
 9. Rape of a male aged under 16.
 10. Rape of a male aged 16 or over.
 11. Attempted rape of a female aged under 16.
 12. Attempted rape of a female aged 16 or over.
 13. Attempted rape of a male aged under 16.
 14. Attempted rape of a male aged 16 or over.
 16. Rape of female child under 13 by a male.
 17. Rape of a male child under 13 by a male.
 18. Attempted rape of a female child under 13 by a male
 19. Attempted rape of a male child under 13 by a male
20. Sexual assault on female (previously indecent assault on a female):
 1. On females under 16 years of age.
 2. On females aged 16 years and over.
 3. Assault on a female by penetration.
 4. Assault on a female child under 13 by penetration.
 5. Sexual assault on a female.
 6. Sexual assault on a female child under 13.
21. Sexual activity (male and female) (including with a child under 13) (previously unlawful intercourse with a girl under 13):
 2. Causing or inciting a female child under 13 to engage in sexual activity - penetration.
 3. Causing or inciting a female child under 13 to engage in sexual activity - no penetration.
 4. Causing or inciting a male child under 13 to engage in sexual activity - penetration
 5. Causing or inciting a male child under 13 to engage in sexual activity - no penetration.
 6. Sexual activity with a female child under 13 - offender aged 18 or over - penetration.
 7. Sexual activity with a male child under 13 - offender aged 18 or over - penetration.
 8. Causing or inciting a female child under 13 to engage in sexual activity - offender aged 18 or over - penetration
 9. Causing or inciting a male child under 13 to engage in sexual activity - offender aged 18 or over - penetration.
 10. Engaging in sexual activity in the presence of a child under 13 (offender aged 18 or over).

11. Causing a child under 13 to watch a sexual act (offender aged 18 or over).
 12. Sexual activity with a female child under 13 - offender aged under 18.
 13. Sexual activity with a male child under 13 - offender aged under 18.
 14. Causing or inciting a female child under 13 to engage in sexual activity - offender under 18.
 15. Causing or inciting a male child under 13 to engage in sexual activity - offender under 18.
 16. Engaging in sexual activity in the presence of a child under 13 - offender under 18.
 17. Causing a child under 13 to watch a sexual act - offender under 18.
 18. Sexual activity with a female under 13 - offender aged 18 or over - no penetration.
 19. Sexual activity with a male child under 13 - offender aged 18 or over - no penetration.
 20. Causing or inciting a female child under 13 to engage in sexual activity - offender aged 18 or over - no penetration.
 21. Causing or inciting a male child under 13 to engage in sexual activity - offender aged 18 or over - no penetration.
 22. Sexual activity with a female child under 13 - offender aged under 18 - no penetration.
 23. Sexual activity with a male child under 13 - offender aged under 18 - no penetration.
 24. Causing or inciting a female child under 13 to engage in sexual activity - offender aged under 18 - no penetration.
 25. Causing or inciting a male child under 13 to engage in sexual activity - offender aged under 18 - no penetration.
22. Sexual activity (male and female) (including with a child under 16) (previously unlawful sexual intercourse with a girl under 16):
0. Unlawful sexual intercourse with girl under 16 (offences committed prior to 1 May 2004).
 2. Causing a female person to engage in sexual activity without consent - penetration
 3. Causing a male person to engage in sexual activity without consent - penetration
 4. Causing a female person to engage in sexual activity without consent - no penetration.
 5. Causing a male person to engage in sexual activity without consent - no penetration.
 6. Sexual activity with a female child under 16 (offender aged 18 or over) - penetration
 7. Sexual activity with a male child under 16 (offender aged 18 or over) - penetration
 8. Causing or inciting a female child under 16 to engage in sexual activity (offender aged 18 or over) - penetration
 9. Causing or inciting a male child under 16 to engage in sexual activity (offender aged 18 or over) - penetration
 10. Engaging in sexual activity in the presence of a child under 16 (offender aged 18 or over).
 11. Causing a child under 16 to watch a sexual act (offender aged 18 or over).
 18. Sexual activity with a female child under 16 - offender aged 18 or over - no penetration.
 19. Sexual activity with a male child under 16 - offender aged 18 or over - no penetration.
 20. Causing or inciting a female child under 16 to engage in sexual activity (offender aged 18 or over) - no penetration.
 21. Causing or inciting a male child under 16 to engage in sexual activity (offender aged 18 or over) - no penetration.
70. Sexual activity etc. with a person with a mental disorder:
1. Sexual activity with a male person with a mental disorder impeding choice – penetration.

2. Sexual activity with a female person with a mental disorder impeding choice – penetration.
 3. Sexual activity with a male person with a mental disorder impeding choice - no penetration.
 4. Sexual activity with a female person with a mental disorder impeding choice - no penetration.
 5. Causing or inciting a male person with a mental disorder impeding choice to engage in sexual activity – penetration.
 6. Causing or inciting a female person with a mental disorder impeding choice to engage in sexual activity – penetration.
 7. Causing or inciting a male person with a mental disorder impeding choice to engage in sexual activity – penetration.
 8. Causing or inciting a female person with a mental disorder impeding choice to engage in sexual activity - no penetration.
 9. Engaging in sexual activity in the presence of a person with a mental disorder impeding choice.
 10. Causing a person with a mental disorder impeding choice to watch a sexual act.
 11. Inducement, threat or deception to procure sexual activity with a person with a mental disorder – penetration.
 12. Inducement, threat or deception to procure sexual activity with a person with a mental disorder - no penetration.
 13. Causing a person with a mental disorder to engage in sexual activity by inducement, threat or deception - penetration.
 14. Causing a person with a mental disorder to engage in sexual activity by inducement, threat or deception - no penetration.
 15. Engaging in sexual activity in the presence, procured by inducement, threat or deception, of a person with a mental disorder.
 16. Causing a person with a mental disorder to watch a sexual act by inducement, threat or deception.
 17. Care workers: Sexual activity with a male person with a mental disorder - penetration.
 18. Care workers: Sexual activity with a female person with a mental disorder - penetration.
 19. Care workers: Sexual activity with a male person with a mental disorder - no penetration.
 20. Care workers: Sexual activity with a female person with a mental disorder - no penetration.
 21. Care workers: Causing or inciting sexual activity (person with a mental disorder) - penetration.
 22. Care workers: Causing or inciting sexual activity (person with a mental disorder) - no penetration.
 23. Care workers: Sexual activity in the presence of a person with a mental disorder.
 24. Care workers: Causing a person with a mental disorder impeding choice to watch a sexual act.
71. Abuse of children through prostitution and pornography (previously child prostitution and pornography):
1. Arranging or facilitating the commission of a child sex offence.
 2. Paying for sex with a female child under 13 - penetration
 3. Paying for sex with a male child under 13 - penetration
 4. Paying for sex with a female child under 16 - no penetration
 5. Paying for sex with a male child under 16 - no penetration
 6. Paying for sex with a female child aged 16 or 17.
 7. Paying for sex with a male child aged 16 or 17.
 8. Causing or inciting child prostitution or pornography - child aged 13-17.
 9. Controlling a child prostitute or a child involved in pornography - child aged 13-17.
 10. Arranging or facilitating child prostitution or pornography - child aged 13-17.
 11. Causing or inciting child prostitution or pornography - child under 13.
 12. Controlling a child prostitute or child involved in pornography - child under 13.
 13. Arranging or facilitating child prostitution or pornography - child under 13.

14. Paying for sex with a female child aged under 16 - penetration
 15. Paying for sex with a male child aged under 16 - penetration
72. Trafficking for sexual exploitation:
1. Arranging or facilitating arrival of a person into the UK for sexual exploitation (trafficking).
 2. Arranging or facilitating travel of a person within the UK for sexual exploitation (trafficking).
 3. Arranging or facilitating departure of a person from the UK for sexual exploitation (trafficking).

Taking and driving away and related offences

37. Aggravated vehicle taking:
1. Where, owing to the driving of the vehicle, an accident occurs causing the death of any person.

Other motoring offences

4. Manslaughter, etc:
4. Causing death by dangerous driving.
 8. (Offences) Causing death by careless or inconsiderate driving (Offences due to commence in Autumn 2007).

Drink driving offences

4. Manslaughter, etc:
6. Causing death by careless driving when under the influence of drink or drugs.

Appendix H: References

Copas, J. and Marshall, P. (1998) The offender group reoffending scale: A statistical reoffending score for use by probation officers. *Applied Statistics* 47(1); 159-171

Hosmer, D. and Lemeshow S. (2000) *Applied Logistic Regression* (2nd Ed). John Wiley & Sons: New York

Lloyd, C., Mair, G. and Hough, M. (1994) Explaining reoffending rates: a critical analysis. Home Office Research Study 136. London: Home Office

May, C. (1999) Explaining reconviction following a community sentence: the role of social factors. Home Office Research Study 192. London: Home Office.

National Audit Office (2005) *Public Service Agreements: Managing Data Quality – Compendium Report*. Available online at: <http://www.nao.org.uk/pn/04-05/0405476.htm>

Taylor, R. (1999) Predicting reconvictions for sexual and violent offences using the revised offender group reconviction scale. Home Office Research Findings 104. London: Home Office

Links to previous juvenile reoffending publications

Heath, K. (2008) [Re-offending of juveniles: new measures of reoffending 2000-2005](#)

Medhurst, C. and Cunliffe, J. (2007) [Re-offending of juveniles: results from the 2005 cohort](#)

Whiting, E. and Cuppleditch, L. (2006) [Re-offending of juveniles: results from the 2004 cohort](#)

Appendix I: Spending Review 2002 for 2000-2006 PSA Period – 2006 cohort results

Introduction

The Public Service Agreement (PSA) agreed as part of the Government Spending Review 2002 set a target to reduce reoffending by five per cent by 2006, from the 2000 baseline. This target was based on the proportion of offenders reoffending, after controlling for changes in offenders characteristics.

Results

For the baseline cohort (2000), the actual proven reoffending rate was 43.3%. Reoffending means that the offender committed an offence within the one-year follow up period and subsequently received a conviction in court. In 2006, the actual proven reoffending rate was 40.97%, a decrease of 2.3 percentage points since 2000.

Actual proven rates are not used in isolation for the PSA 2000-2006 target. Instead predicted rates are used to take into account the differences between cohorts of offenders. In 2006 the cohort of offenders was less likely to reoffend than those in the baseline year. This resulted in a predicted rate of 41.05%. The predicted reoffending rate is slightly higher than the actual rate and indicates a decrease in proven reoffending of 0.2% against the 2000 baseline. The Ministry of Justice has therefore failed to achieve a reduction of at least 5% between the 2000 and 2006 cohorts. The full results for SR2002 PSA period of 2000 to 2006 are summarised in the table below.

Table I1: Overall reoffending rates against the PSA target to reduce reoffending by 5% by the 2006 cohort, 2000, 2004, 2005 and 2006 cohorts²

Year	Actual binary (yes/no) (%)	Predicted binary (yes/no) (%)	Progress against the target (%)
2000 Q1	43.3	43.3	-
2001 Q1			
2002 Q1			
2003 Q1			
2004 Q1	41.3	41.9	-1.4
2005 Q1 ¹	40.81	40.84	-0.1
2006 Q1 ¹	40.97	41.05	-0.2

¹Actual and predicted rates for the 2005 and 2006 cohorts have been given to two decimal places to highlight the difference between the actual and predicted rates.

²There is no data available for the 2001, 2002 and 2003 cohorts.

Statistical tables

All statistical tables for the 2006 results of PSA 2000-2006 are available at the Ministry of Justice [website](#).

Explanatory notes

This is a National Statistics publication produced by the Ministry of Justice. National Statistics are produced to high professional standards set out in the National Statistics Code of Practice. They undergo regular quality assurance reviews to ensure that they meet customer needs. They are produced free from any political interference.

Symbols and conventions

Figures in the text have not been rounded, whilst percentages have been rounded to one decimal place.

The following symbols have been used throughout the tables in this bulletin:

Italics = Treat data with caution

* = Data is removed as data is unreliable for interpretation

Contact points for further information

Current and previous editions of this publication are available for download at <http://www.justice.gov.uk/publications/reoffendingjuveniles.htm>

Spreadsheet files of the tables and graphs contained in this document are also available for download from this [address](#).

Press enquiries should be directed to the Ministry of Justice press office:

Paul Shaw

Tel: 020 3334 3519

Email: press.office@justice.gsi.gov.uk

Other enquiries about these statistics should be directed to:

Miguel Gonçalves

SE Quarter, 2nd Floor

Fry Building

2 Marsham Street

London SW1P 4DF

Tel: 020 7035 3466

Email: miguel.goncalves@homeoffice.gsi.gov.uk

General enquiries about the statistical work of the Ministry of Justice can be e-mailed to: statistics.enquiries@justice.gsi.gov.uk

Other National Statistics publications, and general information about the official statistics system of the UK, are available from www.statistics.gov.uk

© Crown copyright
Produced by the Ministry of Justice

Alternative formats are available on request from esd@justice.gsi.gov.uk