

## Children Order Child Protection and Referral Statistics for Northern Ireland (quarter ending 31 December 2011)

This bulletin is the eighth reporting of Child Protection and Referral Statistics, for the quarter ending 31 December 2011. Figures are presented by source of referral, and by legal status and age. Analyses are presented regionally and by Health and Social Care Trusts in Northern Ireland.

### Summary Key Findings

#### Child Protection Register

1. At 31 December 2011, 2,137 children were listed on the Child Protection Register in Northern Ireland; a decrease of 2% on the previous quarter (2,220); annually, the register count has decreased by 9% (205), from 2,378 to 2,137, with changes by Trust ranging from an increase of 35% (75) in the Western Trust to a decrease of 26% (134) in the South Eastern Trust;
2. Since 30 September 2011, Register counts fell 7% (38) in the Belfast Trust, 4% (23) in the South Eastern Trust, 3% (10) in the Western Trust and 2% (7) in the Southern Trust. There was an increase of 8% (31) in the Northern Trust;
3. Taking account of population demographics, Register counts per 10,000 children's population (under 18), ranged from 37.7 to 70.3, in the Western and South Eastern Trusts respectively; overall there were 50.3 children per 10,000 on the Register at 31 December 2011;

#### Child Protection Referrals

4. Child Protection Referrals for the quarter ending 31 December 2011 (1,030), were 5% (49) lower than the previous quarter (1,079), and 4% (40) below the count for the same quarter in 2010 (1,070);
5. Quarterly changes across Trusts indicate that Referrals fell by 31% (43) in the Western Trust, by 15% (43) in the Southern Trust and by 4% (16) in the South Eastern Trust. Referrals rose in the Belfast and Northern Trusts by 3% and 37% (49) respectively;

#### Theme

Children Order Child Protection and Referral Statistics for Northern Ireland (quarter ending 31 December 2011)

#### Issued by

Community Information Branch,  
 Information & Analysis Directorate,  
 Department of Health,  
 Social Services & Public Safety,  
 Stormont Estate,  
 Belfast, BT4 3SQ

#### Statistician

Iain Waugh  
 (028) 90520599

#### E-mail

[cib@dhsspsni.gov.uk](mailto:cib@dhsspsni.gov.uk)

#### Internet

[http://www.dhsspsni.gov.uk/index/stats\\_research/stats\\_cib-3/statistics\\_and\\_research-cib-pub/children\\_statistics.htm](http://www.dhsspsni.gov.uk/index/stats_research/stats_cib-3/statistics_and_research-cib-pub/children_statistics.htm)

#### Contents

Contents	Page
Reader Information	2
About CIB	3
List of Tables & Figures	4
Technical Notes	5
Key Findings	9
Child Protection Register	10
Child Protection Referrals	12
Definitions	13
Appendix	15
Additional Information	19

## Reader Information

Document Purpose	For information
Authors	Manny Fitzpatrick, Iain Waugh
Publication Date	17 February 2012
Target Audience	Social Services Directors, Directors of Children's Services, Chief Executives of HSC Board and Trusts in Northern Ireland, health care professionals, academics and social care stakeholders.
Further copies from	CIB@dhsspsni.gov.uk
Copyright	This publication is Crown copyright and may be reproduced free of charge in any format or medium. Any material used must be acknowledged, and the title of the publication specified.
Internet address	<a href="http://www.dhsspsni.gov.uk/index/stats_research/stats-cib-3/statistics_and_research-cib-ub/children_statistics.htm">http://www.dhsspsni.gov.uk/index/stats_research/stats-cib-3/statistics_and_research-cib-ub/children_statistics.htm</a>
Price	FREE

## About CIB

The purpose of Community Information Branch is to promote effective decision making in children and adult social services by providing quality information and analysis. We collect, analyse and disseminate a wide range of community information that is used to help monitor the delivery of personal social services policy. Information collected by CIB is used to assess Trust performance, for corporate monitoring, policy evaluation, and to respond to parliamentary / assembly questions. Information is widely disseminated through a number of regular key statistical publications and ad hoc reports, details of which are available by clicking on the link below.

[http://www.dhsspsni.gov.uk/index/stats\\_research/stats-cib-3/statistics\\_and\\_research-cib-pub/children\\_statistics.htm](http://www.dhsspsni.gov.uk/index/stats_research/stats-cib-3/statistics_and_research-cib-pub/children_statistics.htm)

## Our Vision and Values

Community Information Branch aims to:

- provide up-to-date, quality information on children and adult social services and community health;
- disseminate findings widely with a view to stimulating debate, promoting effective decision-making and improvement in service provision; and
- be an expert voice on social care information.

## List of Tables

Table 1.1	Legal Status of Children on the Child Protection Register at 31 December 2011	10
Table 1.2	Child Protection Register by Age at 31 December 2011	11
Table 1.3	Child Protection Register per 10,000 Population Under 18	11
Table 1.4	Child Protection Referrals by Source of Referral for Quarter ending 31 December 2011	12

## List of Figures

Figure 1	Child Protection Register and Referral Counts for Belfast HSC Trust 31 December 2010 – 31 December 2011	15
Figure 2	Child Protection Register and Referral Counts for Northern HSC Trust 31 December 2010 – 31 December 2011	15
Figure 3	Child Protection Register and Referral Counts for South Eastern HSC Trust 31 December 2010 – 31 December 2011	16
Figure 4	Child Protection Register and Referral Counts for Southern HSC Trust 31 December 2010 – 31 December 2011	16
Figure 5	Child Protection Register and Referral Counts for Western HSC Trust 31 December 2010 – 31 December 2011	17
Figure 6	Child Protection Register and Referral Counts for Northern Ireland 31 December 2010 – 31 December 2011	17
Figure 7	Legal Status of Children on the Child Protection Register in Northern Ireland by quarter 31 March 2010 – 31 December 2011	18

## Technical Notes

### Data Collection

The statistics presented in this bulletin derive from Children Order returns CPR3 and CPR4, provided by each of the five Health and Social Care Trusts in Northern Ireland to Community Information Branch within the Department of Health, Social Services & Public Safety. Templates for CPR3 and CPR4 are detailed on page 14 for information.

These returns are part of a wider set of annual Children Order returns which together provide statistical activity counts relating to Child Protection, Children in Need, Looked After Children, and Children's Day Care.

The figures in this bulletin detail numbers of children on the Child Protection Register at 31 December 2011 by legal status and age, and the numbers of Child Protection Referrals by source of referral for the quarter ending 31 December 2011. Figures are presented regionally and by Health and Social Care Trusts.

### Data Quality

To facilitate the return of accurate counts HSC Trusts have agreed that ten working days from the end of the quarter is sufficient time to update the main administrative system with relevant information. Statistics published do not reflect system updates after the ten day window has passed. Following submission to CIB, further checks are carried out to verify that information is internally consistent. Trend analyses are used to monitor variations and emerging trends.

Queries arising from validation are presented to HSC Trusts for clarification, and if required returns may be amended and/or re-submitted. A detailed quality report for children's community statistics is available on our website at: [http://www.dhsspsni.gov.uk/quality\\_report\\_for\\_childrens\\_statistics-3.pdf](http://www.dhsspsni.gov.uk/quality_report_for_childrens_statistics-3.pdf)

### Statement of Administrative Sources

CPR3 and CPR4 returns are derived from SOS CARE, which is the main administrative system used to support HSC Trusts in delivering social care services to children. A detailed 'Statement of Administrative Sources' is available on our website at: [http://www.dhsspsni.gov.uk/cib\\_statement\\_of\\_administrative\\_sources.pdf](http://www.dhsspsni.gov.uk/cib_statement_of_administrative_sources.pdf)

### Rounding Conventions

Percentages have been rounded to whole numbers and as a consequence some percentages may not sum to 100. 0% may reflect rounding down of values under 0.5%

## **Disclosure Conventions**

To prevent disclosure of the identity of individual children, it has been necessary to suppress the values of cells with low counts which may otherwise be derived by means of simple arithmetic. Our policy statement on disclosure and confidentiality is available on our website at:

[http://www.dhsspsni.gov.uk/cib\\_confidentiality\\_statement.pdf](http://www.dhsspsni.gov.uk/cib_confidentiality_statement.pdf)

## **Revisions Policy**

These data are revised by exception. If revisions are required, background circumstances are reported and revision dates are noted in subsequent publications of these series of statistics.

The general revisions policy for community statistics is published on our website at:

[http://www.dhsspsni.gov.uk/cib\\_revisions\\_policy.pdf](http://www.dhsspsni.gov.uk/cib_revisions_policy.pdf)

## **Main Uses of Data**

Data from this publication helps to meet the needs of a range of internal and external users. Within DHSSPS these figures are used by policy officials and the Northern Ireland Assembly to monitor activity, Inter Agency working and reasons for referrals, and to compare the changing characteristics of children on the Child Protection Register.

## **Related Publications**

This quarterly publication is produced as a companion piece to annual figures, including counts relating to Child Protection, Children in Need, Looked After Children and Day Care, published in 'Children Order Statistical Tables' and 'Children Order Statistical Trends.' These publications are available via the following link:

[http://www.dhsspsni.gov.uk/index/stats\\_research/stats-cib/statistics\\_and\\_research-cib-pub/children\\_statistics/stats-cib-children\\_order.htm](http://www.dhsspsni.gov.uk/index/stats_research/stats-cib/statistics_and_research-cib-pub/children_statistics/stats-cib-children_order.htm)

Details of statistics on similar themes to those detailed within this bulletin and published by other countries in the United Kingdom are outlined below.

## **England**

Referrals, assessments and children who were the subject of a child protection plan, Year ending 31 March 2011

<http://www.education.gov.uk/rsgateway/DB/STR/d001025/index.shtml>

## **Wales**

Referrals, Assessments and Social Services for Children, 2010-11

<http://wales.gov.uk/topics/statistics/headlines/health2011/1109073/?lang=en>

## **Scotland**

Child Safety and Wellbeing - Child Protection – Scotland

<http://www.scotland.gov.uk/Topics/Statistics/Browse/Children/TrendChildProtection>

Other statistics produced by the DHSSPS relating to looked after children and other areas of children's social care with relevant web links are detailed below.

### **Children Order Statistical Tables for Northern Ireland 2010/11**

### **Children Order Statistical Trends for Northern Ireland 2004/05 to 2010/11**

[http://www.dhsspsni.gov.uk/index/stats\\_research/stats-cib/statistics\\_and\\_research-cib-pub/children\\_statistics/stats-cib-children\\_order.htm](http://www.dhsspsni.gov.uk/index/stats_research/stats-cib/statistics_and_research-cib-pub/children_statistics/stats-cib-children_order.htm)

### **Northern Ireland Care Leavers aged 16-18 2009/10**

[http://www.dhsspsni.gov.uk/index/stats\\_research/stats-cib/statistics\\_and\\_research-cib-pub/children\\_statistics/stats\\_research\\_cib\\_care\\_leavers\\_aged18.htm](http://www.dhsspsni.gov.uk/index/stats_research/stats-cib/statistics_and_research-cib-pub/children_statistics/stats_research_cib_care_leavers_aged18.htm)

### **Northern Ireland Care Leavers aged 19 2009/10**

[http://www.dhsspsni.gov.uk/index/stats\\_research/stats-cib/statistics\\_and\\_research-cib-pub/children\\_statistics/stats\\_and\\_research\\_cib\\_care\\_leavers\\_aged19.htm](http://www.dhsspsni.gov.uk/index/stats_research/stats-cib/statistics_and_research-cib-pub/children_statistics/stats_and_research_cib_care_leavers_aged19.htm)

### **Children in Care in Northern Ireland 2009/10 Statistical Bulletin**

[http://www.dhsspsni.gov.uk/index/stats\\_research/stats-cib/statistics\\_and\\_research-cib-pub/children\\_statistics/stats\\_and\\_research\\_cib\\_children\\_in\\_care.htm](http://www.dhsspsni.gov.uk/index/stats_research/stats-cib/statistics_and_research-cib-pub/children_statistics/stats_and_research_cib_children_in_care.htm)

### **Children Adopted from Care in Northern Ireland**

[http://www.dhsspsni.gov.uk/index/stats\\_research/stats-cib/statistics\\_and\\_research-cib-pub/children\\_statistics/statistics\\_and\\_research-cib\\_adoption.htm](http://www.dhsspsni.gov.uk/index/stats_research/stats-cib/statistics_and_research-cib-pub/children_statistics/statistics_and_research-cib_adoption.htm)

### **A National Statistics Publication**

The United Kingdom Statistics Authority has designated these statistics as National Statistics, in accordance with the Statistics and Registration Service Act 2007 and signifying compliance with the Code of Practice for Official Statistics.

Designation can be broadly interpreted to mean that the statistics:

- meet identified user needs;
- are well explained and readily accessible;

- are produced according to sound methods; and
- are managed impartially and objectively in the public interest.

Once statistics have been designated as National Statistics it is a statutory requirement that the Code of Practice shall continue to be observed.

### **User Engagement**

If you have any comments on this publication, please complete our questionnaire at the following link:

[http://www.dhsspsni.gov.uk/index/stats\\_research/stats-cib-3/statistics\\_and\\_research-user\\_engagement.htm](http://www.dhsspsni.gov.uk/index/stats_research/stats-cib-3/statistics_and_research-user_engagement.htm)

or contact:

Iain Waugh

[iain.waugh@dhsspsni.gov.uk](mailto:iain.waugh@dhsspsni.gov.uk)

Tel: 028 905 20599

### **Next Release**

The next release of these statistics, for the quarter ending 31 March 2012, is scheduled for 25 May 2012. The publication release dates for Health and Social Care statistics in Northern Ireland are available from the DHSSPS website at:

[http://www.dhsspsni.gov.uk/index/stats\\_research/stats-pubs.htm](http://www.dhsspsni.gov.uk/index/stats_research/stats-pubs.htm)



## Key Findings

### Child Protection Register (Tables 1.1, 1.2 & 1.3)

1. At 31 December 2011, 2,137 children were listed on the Child Protection Register in Northern Ireland, a decrease of 2% on the previous quarter (2,220); annually the register count has decreased by 9% (205), from 2,378 to 2,137, with changes by Trust ranging from an increase of 35% (75) in the Western Trust to a decrease of 26% (134) in the South Eastern Trust;
2. Since 30 September 2011, Register counts fell by 7% (38) in the Belfast Trust, 4% (23) in the South Eastern Trust, 3% (10) in the Western Trust and 2% (7) in the Southern Trust. There was an increase of 8% (31) in the Northern Trust;
3. Counts of the 2,137 children on the Register at 31 December 2011 by Trusts, indicates over one quarter (26% - 567) were in the South Eastern Trust, with 24% (511) in the Belfast Trust, 20% (424) in the Northern Trust, 18% (384) in the Southern Trust, and 13% (287) in the Western Trust;
4. The age profile of children on the Register has remained relatively stable from quarter to quarter, with 35% (768) aged 5 – 11 years, 29% (633) aged 1 – 4 years, 21% (456) aged 12 – 15 years, 9% (194) under 1, and 6% (122) aged 16 or over, for the quarter ending 31 December 2011;
5. At 31 December 2011, almost 9 in 10 children (89%) on the Register had no recorded legal status, 5% (99) were Accommodated (Article 21) and 4% (91) were subject to an Interim Care Order (Article 57);
6. Taking account of local population demographics, Register counts per 10,000 children's population (under 18), ranged from 37.7 to 70.3, in the Western and South Eastern Trusts respectively; overall there were 50.3 children per 10,000 on the Register at 31 December 2011;

### Child Protection Referrals (Table 1.4)

7. Child Protection Referrals for the quarter ending 31 December 2011 (1,030), were 5% (49) lower than the previous quarter (1,079), and 4% (40) below the referrals count for the same quarter in 2010 (1,070);
8. Almost half of Referrals (47%- 481) originated from within Social Services, 16% (167) from the PSNI, 10% (102) from 'School' or an 'Educational Welfare Officer', 5% (55) from Relatives and 8% (81) from 'Other' sources;
9. Quarterly changes across Trusts indicate that Referrals fell by 31% (43) in the Western Trust, by 15% (43) in the Southern Trust and by 4% (16) in the South Eastern Trust. Referrals rose in the Belfast and Northern Trusts by 3% and 37% (49) respectively.

## Child Protection Register

**Table 1.1: Legal Status of Children on the Child Protection Register at 31 December 2011**

HSC Trust	Legal Status								Total
	Emergency Protection Order (Article 63 & 64)	Accommodated (Article 21)	Interim Care Order (Article 57)	Care Order (Article 50 or 59)	Deemed Care Order (Paras 11 & 30 of Sch 8)	Interim Supervision Order (Article 57)	Other	None	
Belfast	-	21	44	7	0	-	0	437	511
Northern	-	27	-	-	0	-	0	381	424
South Eastern	-	19	-	-	0	-	8	532	567
Southern	-	21	16	0	0	-	5	338	384
Western	-	11	16	-	0	-	0	255	287
<b>Northern Ireland</b>	<b>-</b>	<b>99</b>	<b>91</b>	<b>15</b>	<b>0</b>	<b>-</b>	<b>13</b>	<b>1,943</b>	<b>2,173</b>

"-" cell counts have been suppressed to avoid personal disclosure  
 Source: Children Order Return CPR4

**Table 1.2: Child Protection Register by Age at 31 December 2011**

HSC Trust	Age (years)					Total
	Under 1	1 - 4	5 - 11	12 - 15	16 +	
Belfast	46	178	170	93	24	511
Northern	38	133	147	84	22	424
South Eastern	42	170	188	134	33	567
Southern	35	87	151	83	28	384
Western	33	65	112	62	15	287
<b>Northern Ireland</b>	<b>194</b>	<b>633</b>	<b>768</b>	<b>456</b>	<b>122</b>	<b>2,173</b>

Source: Children Order Return CPR4

**Table 1.3: Child Protection Register per 10,000 Population Under 18**

HSC Trust	Quarter Ending							
	31st March 2010	30th June 2010	30th September 2010	31st December 2010	31st March 2011	30th June 2011	30th September 2011	31st December 2011
Belfast	78.7	80.1	85.1	74.8	75.1	73.8	74.3	69.1
Northern	34.0	37.6	39.5	38.4	41.5	37.4	36.1	38.9
South Eastern	87.5	93.8	94.0	83.9	85.0	76.9	73.1	70.3
Southern	50.9	49.9	54.0	56.2	51.3	44.8	42.4	41.7
Western	29.9	27.4	28.6	27.8	30.9	30.2	39.0	37.7
<b>Northern Ireland</b>	<b>54.6</b>	<b>56.2</b>	<b>58.7</b>	<b>55.1</b>	<b>55.6</b>	<b>51.3</b>	<b>51.4</b>	<b>50.3</b>

Source: Children Order Return CPR4

Population Figures Based on latest available NISRA Mid-Year Estimates

## Child Protection Referrals

**Table 1.4: Child Protection Referrals by Source of Referral for Quarter ending 31 December 2011**

HSC Trust	Source of Referral											Total	
	Police	School / EWO <sup>1</sup>	Voluntary Org.	GP	Social Services	Comm. Nursing	Relative	Neighbour / Friend	Hospital	Self	Anon		Other
Belfast	21	15	6	-	89	-	-	-	-	0	-	10	150
Northern	11	10	-	-	134	-	-	-	0	0	-	9	181
South Eastern	79	50	11	6	116	-	30	-	8	16	7	22	354
Southern	41	19	-	11	90	-	16	-	10	-	14	30	250
Western	15	8	0	-	52	-	5	-	-	-	0	10	95
<b>Northern Ireland</b>	<b>167</b>	<b>102</b>	<b>26</b>	<b>22</b>	<b>481</b>	<b>-</b>	<b>55</b>	<b>-</b>	<b>24</b>	<b>21</b>	<b>26</b>	<b>81</b>	<b>1,030</b>

"-" cell counts have been suppressed to avoid personal disclosure

<sup>1</sup> EWO – Educational Welfare Officer

Source: Children Order Return CPR3

# Definitions

## Children (Northern Ireland) Order 1995

The Children (Northern Ireland) Order was made on 15 March 1995. The Order deals with the care, upbringing and protection of children, including disabled children. It reforms, consolidates and harmonises most of the public and private law relating to children in a single coherent statutory framework along the lines of the Children Act 1989 in England and Wales.

### Children

Under the Children (Northern Ireland) Order 1995, a child is defined as a person under the age of 18.

### Children on the Child Protection Register

#### Child Protection Register

A register must be maintained by each Trust listing every child in the Trust area who has been abused or who is considered to be at risk of abuse, and who is currently the subject of a child protection plan.

#### Registration

Placement of a child on to the Child Protection Register. Where a child has moved on or off the Register several times during the year each registration is recorded.

#### Deregistration

Removal of a child from the Child Protection Register. Where a child has moved on or off the Register several times during the year each deregistration is recorded.

#### Re-registration

Placement on to the Child Protection Register of a child who has already been on the register, irrespective of the date of their first registration on the Register.

### Child Protection Referrals

Child protection referrals are those referrals for which the initial assessment indicates that there may be child protection issues.

The threshold for action should be the allegation or suspicion of child abuse. However the balance needs to be struck between taking action designed to protect the child from abuse while at the same time avoiding unnecessary intervention. Except in emergency situations or urgent cases when immediate protective action is required, referrals will require preliminary discussion with other professionals from the child protection agencies and with the referrer. In some cases it will be necessary to seek specialist opinion.

In some cases action other than a formal investigation will be decided upon following the consultation process. This might include the provision of support for

the family. Such a decision should be discussed and agreed with a social worker in consultation with the team leader or supervisor; and recorded and communicated to senior management.

The definition is not taken to mean all referrals, as some may require action such as advice or family support rather than child protection procedures.

### CPR3

**Child Protection Referrals: total number of referrals during the quarter by source of referral** – refers to the number of referrals during the relevant quarter by source of original referral which identified the child as ‘potential at risk’.

	Source of referral	Number
1	Police	
2	School/EWO	
3	Voluntary Organisation	
4	GP	
5	Social Services	
6	Community Nursing	
7	Relative	
8	Neighbour/Friend	
9	Hospital	
11	Self	
12	Anonymous	
13	Other	
	<b>TOTAL</b>	

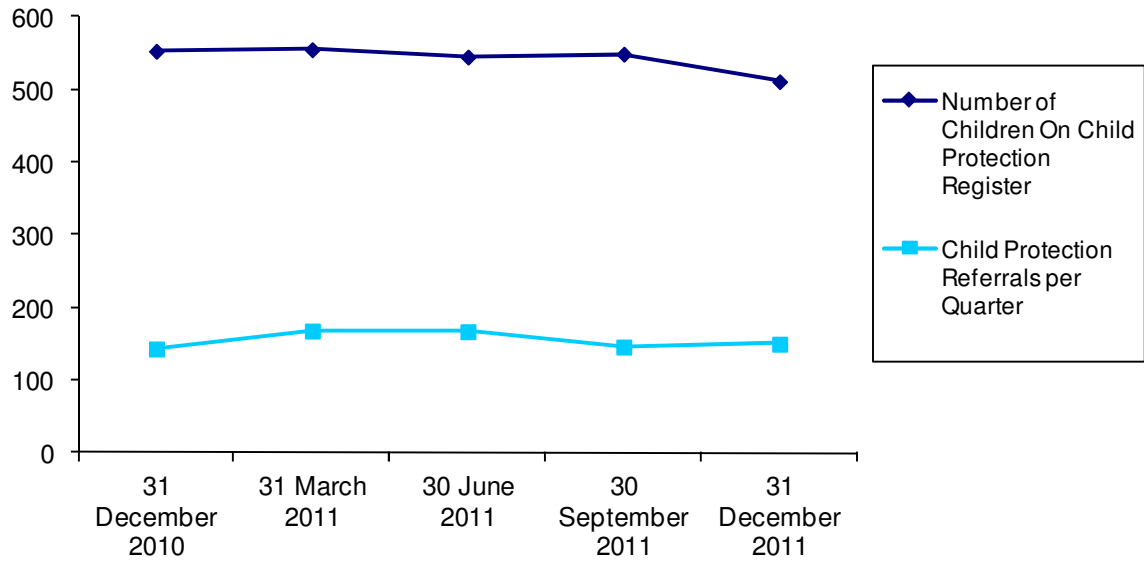
### CPR4

**Legal status of children on the Child Protection Register by age** - the most recent legal status in place during the relevant quarter is recorded for this return. Legal status recorded as ‘None’ means there was no Court Order in effect at the time the child’s name was added to the register.

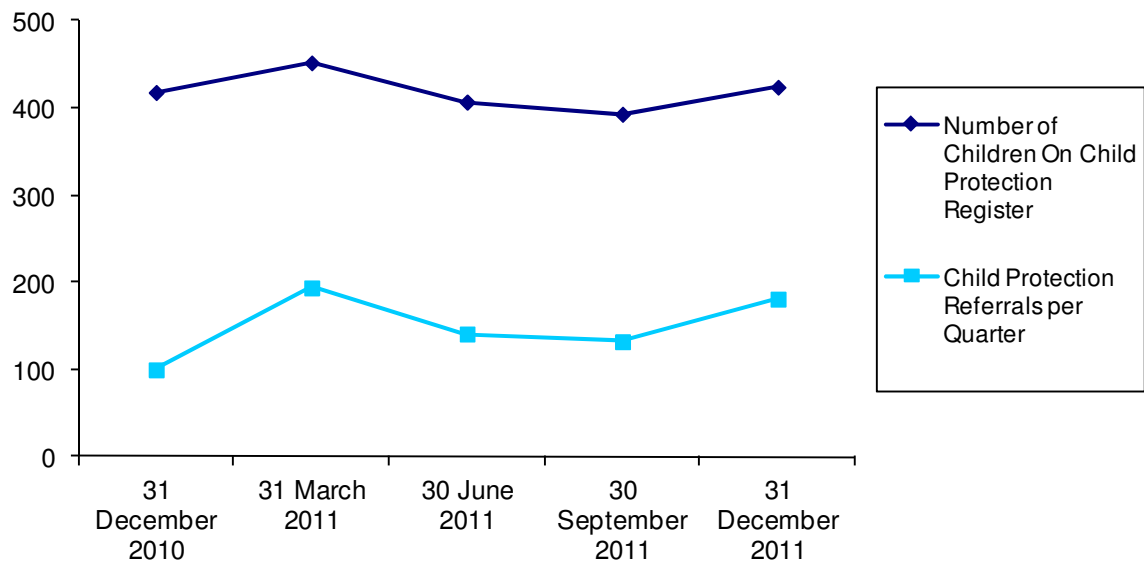
	Legal Status	Age Groups					TOTAL
		Under one Year	1-4	5-11	12-15	16+	
1	Police Protection in Board/Trust Accommodation (Article						
2	Child Assessment Order (Article 62)						
3	Emergency Protection Order (Article 63 & 64)						
4	Accommodated under Article 21						
5	Interim Care Order (Article 57)						
6	Care Order (Article 50 or Article 59)						
7	Deemed Care Order (Paras 11 & 30 of Sch 8)						
8	Interim Supervision Order (Article 57)						
9	Supervision Order (Article 50)						
10	Deemed Supervision Order (Para 20 of Sch 8)						
11	Education Supervision Order (Article 55)						
12	Deemed Education Supervision Order (para 21 of Sch 8)						
13	Children Freed for Adoption and looked after by Board/Trust						
14	Other						
15	None						
	<b>TOTAL</b>						

# Appendix

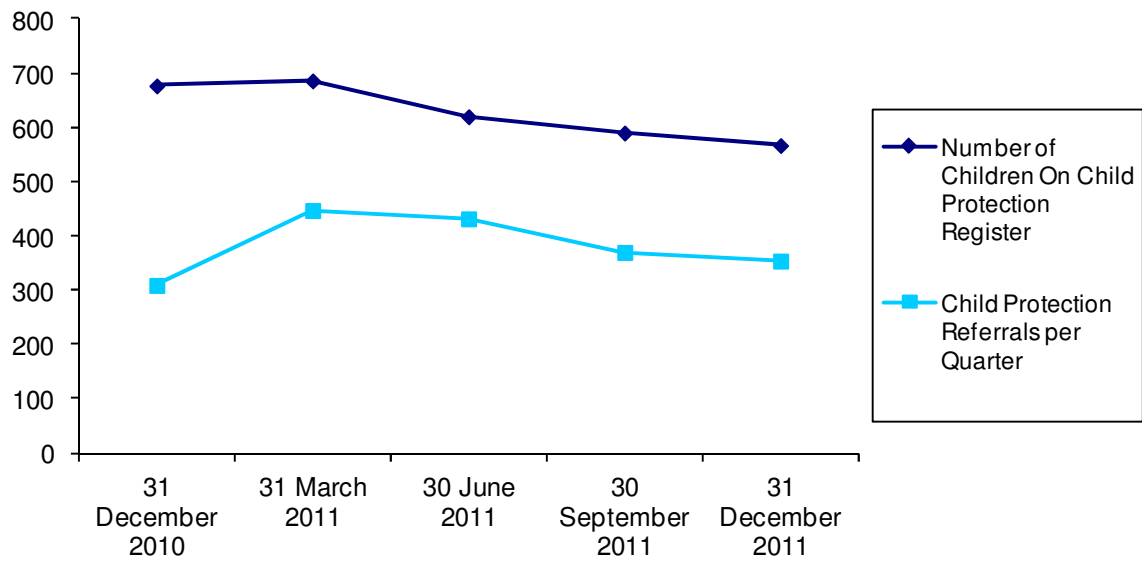
**Figure 1: Child Protection Register and Referral Counts for Belfast HSC Trust  
31 December 2010 – 31 December 2011**



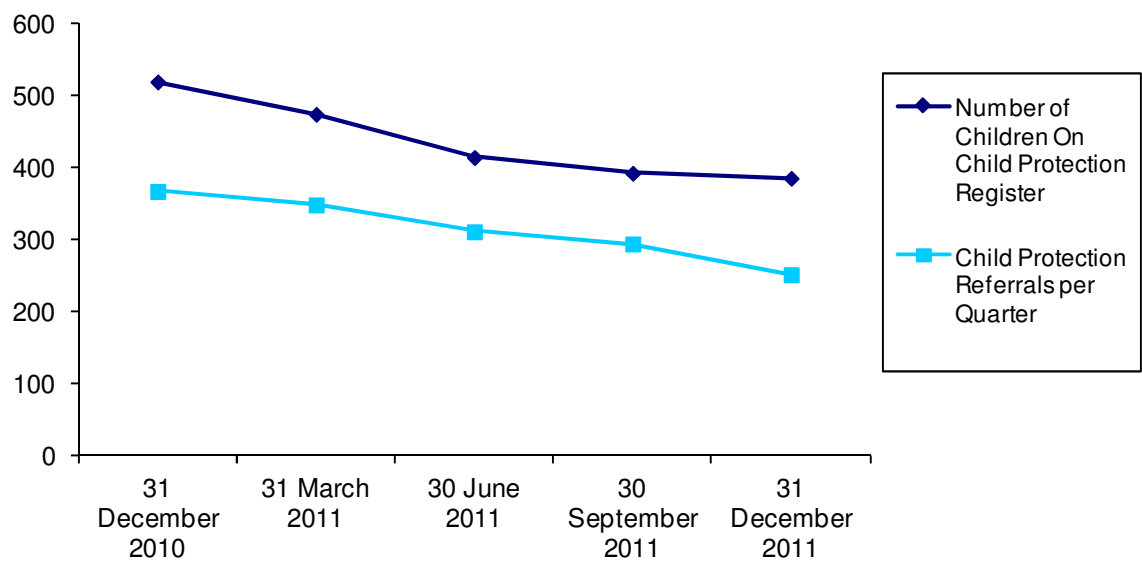
**Figure 2: Child Protection Register and Referral Counts for Northern HSC Trust  
31 December 2010 – 31 December 2011**



**Figure 3: Child Protection Register and Referral Counts for South Eastern HSC Trust  
31 December 2010 – 31 December 2011**

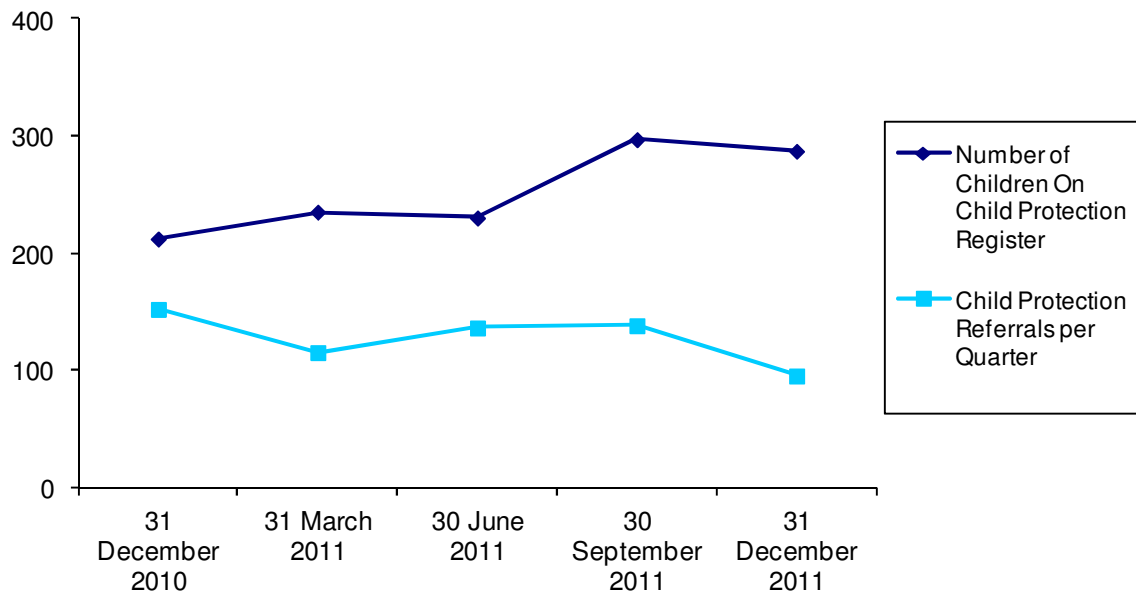


**Figure 4: Child Protection Register and Referral Counts for Southern HSC Trust  
31 December 2010 – 31 December 2011**

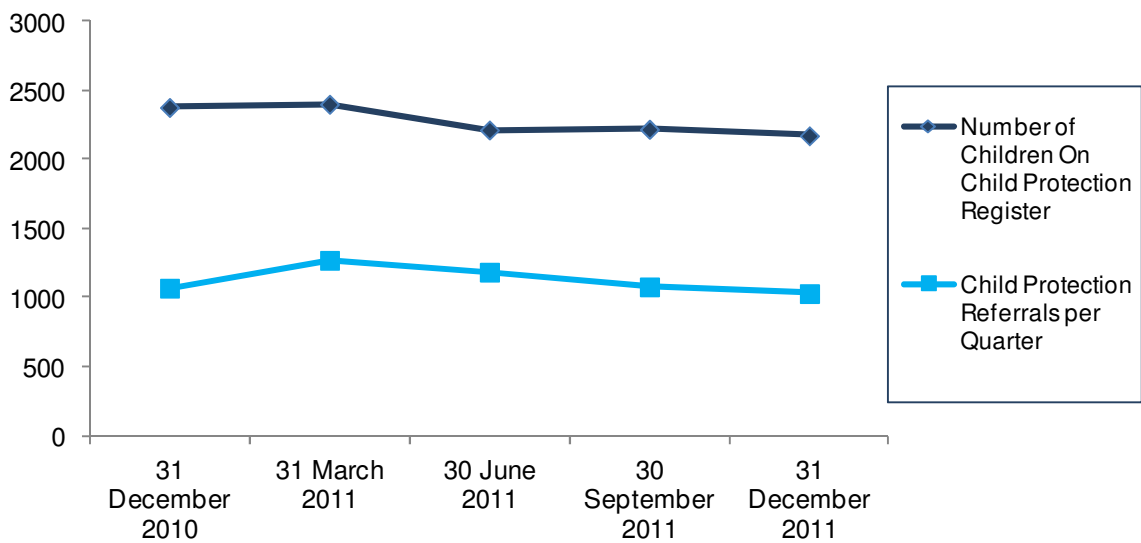




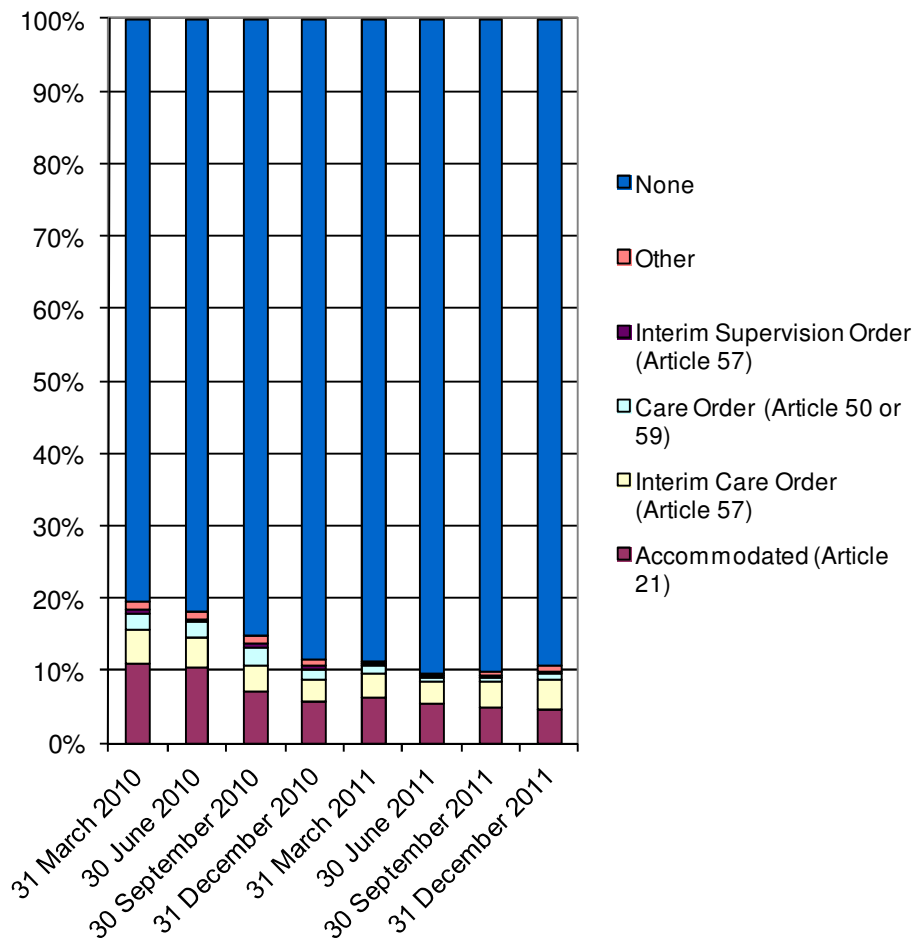
**Figure 5: Child Protection Register and Referral Counts for Western HSC Trust  
31 December 2010 – 31 December 2011**



**Figure 6: Child Protection Register and Referral Counts for Northern Ireland  
31 December 2010 – 31 December 2011**



**Figure 7: Legal Status of Children on the Child Protection Register in Northern Ireland by quarter 31 March 2010 – 31 December 2011<sup>1</sup>**



1. 'Other' category includes children in care under 'Emergency Protection Order (Article 63 & 64)' and 'Deemed Care Order (Paras. 11 & 30 of Sch. 8)

## Additional Information

**Further information** on Children Order Child Protection and Referral Statistics for Northern Ireland (quarter ending 31 December 2011) is available from:

**Iain Waugh**

Community Information Branch

Department of Health, Social Services and Public Safety

Annexe 2

Castle Buildings

Stormont

BT4 3SQ



(028) 9052 0599

Fax: (028) 9052 3288

Email: [cib@dhsspsni.gov.uk](mailto:cib@dhsspsni.gov.uk)

This and other statistical bulletins published by Community Information Branch are available to download from the DHSSPS internet at:

[http://www.dhsspsni.gov.uk/index/stats\\_research/stats-cib-3/statistics\\_and\\_research-cib-pub/children\\_statistics.htm](http://www.dhsspsni.gov.uk/index/stats_research/stats-cib-3/statistics_and_research-cib-pub/children_statistics.htm)