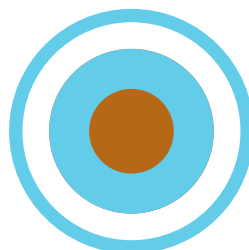
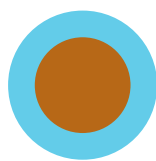




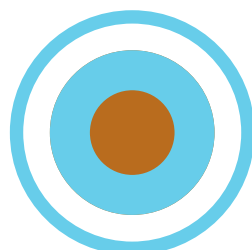
Mapping the social services workforce organisational landscape

A guide to the key
organisations

July 2009



© Voluntary Sector Social Services
Workforce Unit 2009



Mapping the Social Services Workforce Organisational Landscape



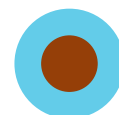
Background

This guide is intended to map out the key organisations operating in the social services field in Scotland. It provides an indication of the range of intermediary and umbrella organisations with which voluntary sector providers of social care may need to link and engage. We have provided a brief description of each organisation and supplied links to the relevant web pages.

Content Structure

Organisations have been allocated to one of five categories on the home page diagram:

- Learning and development
- Government
- Regulatory
- Intermediary
- Employers



Each category has been further divided into national and local, to reflect the primary sphere of influence of organisations.



How to use the document

For ease of use, the document is arranged so that the home page hosts a user diagram illustrating the categories and each organisation within these. The categories, area of coverage and each individual organisation are then hyper-linked to more information later in the document. Each section has a link taking you back to the home page.

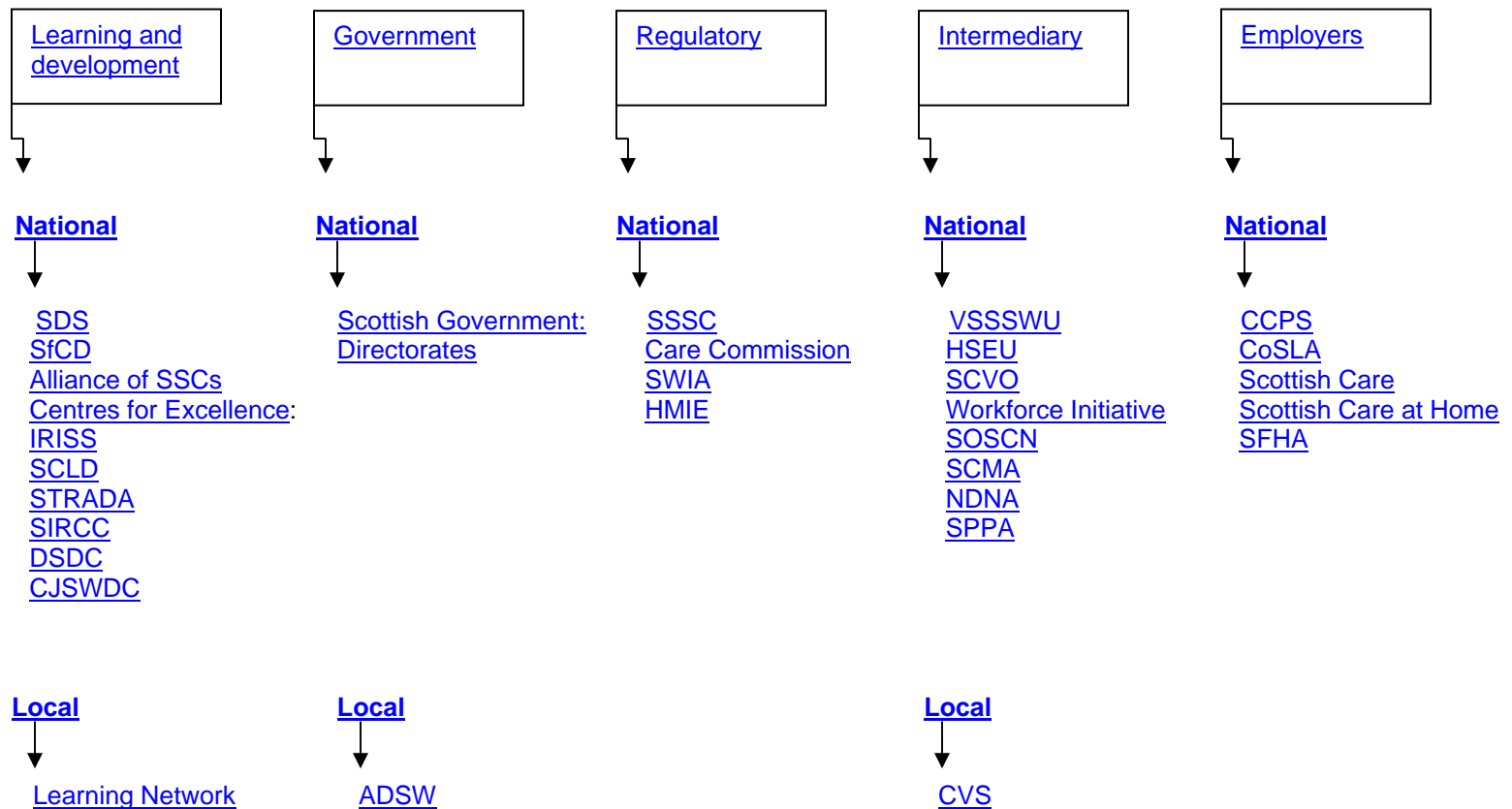
For example, if you are looking for details on the organisations that have a regulatory function, you can:

- click on Regulatory to take you to the full list, or
- click on Regulatory, National organisations to take you to regulatory organisations operating at the national level, or
- click directly on an organisation, for example the SSSC

Selecting the SSSC would provide details on the role of the SSSC, its website and contact details.

This document is intended as a starting point. If you have any queries regarding the information presented or would like more information, please contact the Workforce Unit at vswu.admin@ccpscotland.org where staff would be pleased to assist.

Click on the links to get details of each organisation



Learning and Development

National organisations

SDS (Skills Development Scotland)

SDS is the skills body for Scotland that is charged with taking forward the Skills for Scotland skills strategy. It was formed after the bringing together of Careers Scotland, the Scottish University for Industry and key skills elements in Scottish Enterprise/Highlands and Islands Enterprise

Website: www.skillsdevelopmentscotland.co.uk/index.aspx

Contact: info@skillsdevelopmentscotland.co.uk

[Back to top](#)

SfCD (Skills for Care and Development)

SfCD is the Sector Skills Council for social care. It is made up of six bodies and in Scotland the responsible body is the Scottish Social Services Council.

Sector Skills Councils are employer-led bodies with responsibility for identifying and tackling issues of skills, productivity and employability for the private, public and voluntary sectors they represent.

Website: www.sssc.uk.com

Contact: enquiries@sssc.uk.com

[Back to top](#)

Alliance (Alliance of Sector Skills Councils)

The Alliance is an organisation that comprises all of the 25 licensed UK Sector Skills Councils (SSCs). Its core purpose is to:

- Act as the collective voice of the Sector Skills Councils
- Promote understanding of the role of SSCs within the skills system across England, Scotland, Wales and Northern Ireland
- Co-ordinate policy positions and strategic work on skills with stakeholders across the four home nations
- Help build the performance capability of the Sector Skills Councils, to ensure they continue to work effectively on the employer-driven skills agenda

Website: www.sscalliance.org

Contact: sscinfo@sscalliance.org

[Back to top](#)

Centres for Excellence

The Centres for Excellence provide an important learning and development resource in their specialised fields. They enable the development of evidence-based practice, the application of critical methods of learning, enquiry and practice development in order to enhance the capacity, knowledge and skills in each specialised field. The Centres for Excellence are:

1 IRISS (Institute for Research and Innovation in Social Services)

IRISS aims to develop a world-class, knowledge-based social services sector in Scotland. It aims to develop educational qualifications, professional development pathways and organisational learning cultures to promote positive change in Scotland's social services sector.

It is involved in the development of the Social Services Knowledge Scotland information portal and is one of the six Centres for Excellence that aim to promote evidence-based practice, the application of critical methods of learning, enquiry and practice development in order to enhance the capacity, knowledge and skills in each of their specialised fields.

Website: www.iriss.ac.uk

Contact: enquiries@iriss.ac.uk

[Back to top](#)

2 SCLD (Scottish Consortium for Learning Disability)

SCLD is a consortium made up of 12 partner organisations formed to take forward the recommendations in the report 'Same as you?', which was published as a result of a review of services for people with learning disabilities. It is one of the six Centres for Excellence that aim to promote evidence-based practice, the application of critical methods of learning, enquiry and practice development in order to enhance the capacity, knowledge and skills in each of their specialised fields.

Website: www.sclد.org.uk

Contact: administrator@sclد.co.uk

[Back to top](#)

3 STRADA (Scottish Training on Drugs and Alcohol)

STRADA is a national workforce development organisation supporting those working with and affected by drug and alcohol misuse.

It is one of the six Centres for Excellence that aim to promote evidence-based practice, the application of critical methods of learning, enquiry and practice

development in order to enhance the capacity, knowledge and skills in each of their specialised fields.

Website: www.projectstrada.org

Contact: strada@gla.ac.uk

[Back to top](#)

4 SIRCC (Scottish Institute for Residential Childcare)

SIRCC provides learning and development opportunities and supports organisational development and workforce planning for organisations working in the field of residential childcare. It aims to ensure that workers have access to the skills and knowledge they require to meet the needs of the children and young people in their care.

It is one of the six Centres for Excellence that aim to promote evidence-based practice, the application of critical methods of learning, enquiry and practice development in order to enhance the capacity, knowledge and skills in each of their specialised fields.

Website: www.sircc.org.uk

Contact: sircc@strath.ac.uk

[Back to top](#)

5 (DSDC) Dementia Services Development Centre

The DSDC aims to disseminate research and good practice about home and hospital care for people with any type of dementia. It provides training and information for nurses, people working in nursing homes, home care workers, psychiatrists, social workers, police officers and those working in the voluntary sector.

It is one of the six Centres for Excellence that aim to promote evidence-based practice, the application of critical methods of learning, enquiry and practice development in order to enhance the capacity, knowledge and skills in each of their specialised fields.

Website: www.dementia.stir.ac.uk

Contact: dementia@stir.ac.uk

[Back to top](#)

6 CJSWDC (Criminal Justice Social Work Development Centre)

The Centre is an independent national resource providing a range of services to those working in, or concerned about, criminal and youth justice social work services. It works in partnership with statutory and voluntary sector service

providers and with central government to identify, promote, develop and disseminate good practice and management, based on the best available evidence.

[Back to top](#)

Local organisations

Learning Network

The Scottish Social Services Learning Network is designed to support the learning and development of Scotland's social services workforce, whether in the public, private or voluntary sector. It also provides support in relation to practice learning, registration and post-registration requirements and workforce planning. It operates on a geographic basis with four regional Learning Networks:

Learning Network North

Website: www.learningnetworks.org.uk/north.php

Contact: Jan.Foster@aberdeenshire.gov.uk

Learning Network South East

Website: www.learningnetworks.org.uk/southeast.php

Contact: learning.network@ed.ac.uk

Learning Network Tayforth

Website: www.learningnetworks.org.uk/tayforth.php

Contact: info@tayforthsssl.n.co.uk

Learning Network West

Website: www.learningnetworks.org.uk/west.php

Contact: enquiries@westlearn.org.uk

[Back to top](#)

Government

National government

Scottish Government Directorates

1 Children, Young People and Social Care

Amongst other activities, the Children, Young People and Social Care Directorate works to develop the capacity and leadership needed to improve outcomes for the users of social care.

The key Division in relation to the social services workforce is the Workforce and Capacity Issues Division.

- This division is currently being restructured and more information will be added when this is complete.

Website: www.scotland.gov.uk

Contact:

[Back to top](#)

2 Public Service Reform and Efficiency Directorate

Part of this Directorate's role is to engage with the Third Sector, primarily in relation to social economy issues and social enterprise.

Website: www.scotland.gov.uk

Contact: Tracey Slavin (tracey.slavin@scotland.gsi.gov.uk)

[Back to top](#)

3 Primary and Community Care Directorate

The key Division in relation to adult social care within this Directorate is the Adult Care and Support Change Team.

Website: www.scotland.gov.uk

Contact: Jean Maclellan (jean.maclellan@scotland.gsi.gov.uk)

4 The Partnership Improvement and Outcomes Division houses the Joint Improvement Team that works with local health and social care partnerships across Scotland.

Website: www.jitscotland.org.uk

Contact: jit@scotland.gsi.gov.uk

[Back to top](#)

Local government

ADSW (Association of Director's of Social Work)

ADSW is the body that represents senior social workers in local government. It promotes social welfare, social inclusion and the interests of the people who use social work services.

Website: www.adsw.org.uk
Contact: sophie.mills@adsw.org.uk

[Back to top](#)

Regulatory

National organisations

SSSC (Scottish Social Services Council)

The SSSC is responsible for raising standards in the Scottish social service workforce. This includes determining the qualifications required for posts within social services, regulating education and training and registering individuals employed in social services. It is the main regulatory body for individuals.

Website: www.sssc.uk.com
Contact: enquiries@sssc.uk.com (general)
registration@sssc.uk.com (registration)

[Back to top](#)

Care Commission (Scottish Commission for the Regulation of Care)

The Care Commission regulates all adult, child and independent healthcare services in Scotland, including those involved in social care provision. As part of this process, it requires providers to submit annual returns on their services. It has recently begun the process of grading each service.

Website: www.carecommission.com
Contact: <mailto:enquiries@carecommission.com> (general)
grading.feedback@carecommission.com (grading)

[Back to top](#)

SWIA (Social Work Inspection Agency)

SWIA inspects all local authority social work departments in Scotland, including organisations providing social work services on behalf of a local authority.

Website: www.swia.gov.uk
Contact: info@swia.gsi.gov.uk

[Back to top](#)

HMIE (Her Majesty's Inspector of Education)

Although the majority of the work of HMIE relates to schools and colleges, it also has a role in the evaluation of child protection services. The evidence that HMIE gathers from the inspection process is used to support the development of policy.

Website: www.hmie.gov.uk
Contact: www.hmie.gov.uk/generic/contactus/

[Back to top](#)

Intermediary

National organisations

VSSSWU (Voluntary Sector Social Services Workforce Unit)

The VSSSWU supports and promotes the development of the voluntary sector social services workforce in Scotland. It does this through regular briefings, events and seminars. It also hosts a workforce issues enquiry service and a workforce development network.

Website: www.ccpscotland.org/workforceunit
Contact: vswu.admin@ccpscotland.org

[Back to top](#)

HSEU (Housing Support Enabling Unit)

The HSEU works with independent organisations that provide a housing support service. The Unit provides regular news, updates, briefings and practice sharing information.

Website: www.ccpscotland.org/spunit
Contact: sp.unit@ccpscotland.org

[Back to top](#)

SCVO (Scottish Council for Voluntary Organisations)

SCVO is a national body representing the voluntary sector. Part of its work focuses on employment, skills and workforce development in the sector. It is involved in the development of a sector skills body for the sector.

Website: www.scvo.org.uk
Contact: enquiries@scvo.org.uk

[Back to top](#)

Workforce Initiative (Private Care Sector Workforce Initiative)

The Workforce Initiative aims to develop the capacity of the private care sector in Scotland to deliver the national workforce agenda. It is managed by Scottish Care in partnership with Scottish Care at Home.

Website: www.workforceinitiative.co.uk
Contact: admin@workforceinitiative.co.uk

[Back to top](#)

SOSCN (Scottish Out of School Care Network)

The Scottish Out of School Care Network is a Scottish charity supporting school-aged play, care and learning. It promotes, supports and develops good quality, sustainable out of school care.

Website: www.soscn.org
Contact: info@soscn.org

[Back to top](#)

SCMA (Scottish Childminding Association)

The Scottish Childminding Association provides support, training and information to childminders.

Website: www.childminding.org
Contact: information@childminding.org

[Back to top](#)

NDNA (National Day Nurseries Association)

The National Day Nurseries Association is a national charity that aims to enhance the development and education of children in their early years, through the provision of support services to members. It seeks to develop, encourage and

maintain high standards in education and care for the benefit of children, their families and their local communities.

Website: www.ndna.org.uk
Contact: Scotland@ndna.org.uk

[Back to top](#)

SPPA (Scottish Pre-school Play Association)

The Scottish Pre-School Play Association is Scotland's largest voluntary sector provider of direct support services to community led childcare organisations. It delivers essential support and guidance services to providers of pre-school education and childcare services, including all-day care groups, playgroups, parent and toddler groups and under-fives groups.

Website: www.sppa.org.uk
Contact: info@sppa.org.uk

[Back to top](#)

Local organisations

CVS (Councils for Voluntary Service)

The CVS network is made up of individual organisations each of which provide a range of development and support services to voluntary organisations in their local area. This includes developing skills and knowledge and improving standards.

Website: www.scvo.org.uk/cvsnetwork
Contact: see individual CVS contact details on the SCVO website

[Back to top](#)

Employers

National organisations

CCPS (Community Care Providers Scotland)

CCPS is the association of voluntary sector organisations providing care and support services in Scotland. It aims to identify, represent, promote and protect the interests of its members so that they can maximise the support they provide to service users.

Website: www.ccpscotland.org

Contact: dorothy.robertson@ccpscotland.org

[Back to top](#)

CoSLA (Convention of Scottish Local Authorities)

CoSLA is the representative organisation for member Scottish local authorities and is also the employers' association for all Scottish councils. It has a key role in relation to the development of social services, particularly in relation to the development of the Single Outcome Agreement framework.

Website: www.cosla.gov.uk

Contact: carol@cosla.gov.uk

[Back to top](#)

Scottish Care

Scottish Care represents independent care homes in Scotland.

Website: www.scottishcare.org

Contact: www.scottishcare.org/contact.php

[Back to top](#)

Scottish Care at Home

Scottish Care at Home is the national representative organisation for the independent care at home and housing support sector.

Website: www.scahonline.org

Contact: admin@scahonline.org

[Back to top](#)

SFHA (Scottish Federation of Housing Associations)

The SFHA is a membership organisation representing and supporting housing associations and local housing organisations in Scotland, many of which have, or commission, housing support services.

Website: www.sfha.co.uk
Contact: sfha@sfha.co.uk

[Back to top](#)