

# Statistics Publication Notice

Health and Care Series

ISSN 1479-7569 (*online*)

A National Statistics Publication for Scotland

## CHILD PROTECTION STATISTICS 2008/09

30 September 2009



Scotland's Chief Statistician today published the [Child Protection Statistics 2008/09](#). This publication contains the latest figures on the number of child protection referrals, number of child protection referrals that resulted in a case conference, number of registrations, number of de-registrations and number of children on child protection registers

The main findings are:

- In 2008/09, there were 12,713 child protection referrals, an increase of 3% compared with the previous year. Forty-seven per cent of these referrals were for boys, 49% were for girls, and 4% were for children whose gender was not known (largely due to being unborn). (Table 1, Chart 1)
- Thirty-seven per cent of child protection referrals resulted in an inter-agency case conference in 2008/09. This compares to 35% in 2007/08 and 39% in 2006/07. (Table 1, Table 2, Chart 4)
- Seventy-nine per cent of children who were subject to a case conference were living at home prior to being referred, the same as in the previous year. (Table 2)
- For 85% of children who were subject to a case conference, the primary known/suspected abuser was the child's natural parents (where this was known), one percentage point lower than in the previous year. (Table 3)
- Of the 4,720 case conferences, 77% resulted in the child being placed on the local child protection register. This compares to 65% in 2007/08 and 68% in 2006/07. (Table 3, Table 4, Chart 4)

- The total number of registrations on to child protection registers between 1<sup>st</sup> April 2008 and 31<sup>st</sup> March 2009 was 3,628, a rise of 29% compared with the previous year. The number of registrations on to child protection registers as a result of emotional abuse were up by 43%, for physical neglect were up by 29%, for physical injury were up by 23%, and for sexual abuse were up by 21%. (Table 4, Chart 2)
- Fourteen per cent of registrations on to child protection registers in 2008/09 were of children who were known to have been previously on a child protection register. This compares with 16% in 2007/08 and 12% in 2006/07. (Table 5)
- The total number of de-registrations from child protection registers between 1<sup>st</sup> April 2008 and 31<sup>st</sup> March 2009 was 3,499, an increase of 9% compared with the previous year. Seventy six per cent of these de-registrations were for children who had been on the register for less than one year compared with 75% in the previous year. (Table 6)
- Thirty four per cent of all de-registrations from child protection registers were because of an improved home situation. A further 15% were because the child was taken into care and risk reduced, 8% were because the child was with other carers, 2% were because the perpetrator was removed, and 5% were because the child moved away and there was no continued risk or the child was transferred to another local authority. The remaining 35% were because of some other form of reduced risk. (Table 6)
- As at 31 March 2009, there were 2,682 children on Child Protection Registers, an increase of 10% compared with the previous year. There were slightly more boys than girls on child protection registers, and 83% of children were under the age of 11 years old (including unborns). (Table 7)
- At 31<sup>st</sup> March 2009, 47% of all children on local child protection registers were registered because of physical neglect (down 1 percentage point compared with the previous year), 25% because of emotional abuse (up 2 percentage points compared with the previous year), 21% because of physical injury (the same as in the previous year) and 7% because of sexual abuse (up 1 percentage point compared with the previous year). (Table 8)
- The ethnic group for children on child protection registers was collected for the first time in 2008/09. At 31<sup>st</sup> March 2009, 82% of all children on local child protection registers were reported as being from a 'White' ethnic group, with a further 2% being from a 'Mixed' ethnic group, 1% from a 'Black, Black Scottish or Black British' ethnic group, and 1% from an 'Other' ethnic group. Please note that 1% of all children on child protection registers were reported as having a 'Not disclosed' ethnic group whilst the remaining 13% were reported with an 'Unknown' ethnic group. (Table 8)

- The disability status for children on child protection registers was also collected for the first time in 2008/09. At 31<sup>st</sup> March 2009, 70% of all children on local child protection registers were reported as not having a disability, whilst 7% were reported as having some form of disability. Please note, however, that 23% of all children on child protection registers were reported with an 'Unknown' disability status. (Table 8)

**The following charts are available:**

- Chart 1 - Number of child protection referrals by gender, 1999/00-2008/09  
 Chart 2 - Number of registrations to child protection registers following a case conference by category of abuse/risk, 1999/00-2008/09  
 Chart 3 - Number of children on child protection registers by gender, at 31 March 2000-2009  
 Chart 4 - Child Protection Statistics 2008/09 – Flow Chart

**The following tables are available:**

- Table 1 - Number of child protection referrals: 1999/00-2008/09 by gender and age group  
 Table 2 - Number of child protection referrals that resulted in a case conference: 1999/00-2008/09 by placement of children prior to referral  
 Table 3 - Number of child protection referrals that resulted in a case conference: 1999/00-2008/09 by child's primary known/suspected abuser  
 Table 4 - Number of registrations following a case conference: 1999/00-2008/09 by category of abuse/risk identified by conference  
 Table 5 - Number of registrations following a case conference: 2005/06-2008/09 by length of time since de-registration before this registration  
 Table 6 - Number of de-registrations: 1999/00-2008/09 by category of abuse/risk identified, length of time on register and reason for de-registration  
 Table 7 - Number of children on child protection registers: 31 March 2000-2009 by gender and age group  
 Table 8 - Number of children on child protection registers: 31 March 2006-2009 by category of abuse/risk identified, ethnic group and disability status  
 Table 9 - Numbers of child protection referrals, subject to a case conference, registrations, de-registrations and on child protection registers: 2000-2009  
 Table 10 - Number of children on child protection registers and population rates: 31 March 2000-2009 by local authority  
 Table 11 - Numbers of child protection referrals, subject to a case conference, registrations, de-registrations and on child protection registers by local authority: 2008/09

**BACKGROUND NOTES**

**Method of Collection**

Each local authority is asked to submit an annual survey form providing aggregate data for children going through the process of child protection. Figures were collected for the number of child protection referrals, number of child protection referrals that resulted in a case conference, number of registrations, number of de-registrations and number of children on child protection registers. The dates for the collection is throughout the financial year, 1<sup>st</sup> April 2008 to 31<sup>st</sup> March 2009.

## **Change in Methodology**

From 2005/06, to improve consistency in reporting across local authorities, the question in relation to the number of child protection referrals was revised from asking for the number of children who had a child protection referral to asking for the total number of child protection referrals and the total number of children these involved. The reason for this change was to take into account that a child may be subject to more than one child protection referral in the same year, and that more than one child could be involved in a single child protection referral. In previous years, the child was only being counted once by some local authorities, whereas from 2005/06 this was now a count of referrals and a child could be counted more than once. Also, if a number of children were included in a single child protection referral, then all children were to be counted (as if they had each had their own child protection referral).

This change in the way Child Protection Referrals were to be counted may also have affected the number of Case Conferences and any subsequent Child Protection Registrations (see Tables 2 – 5) as a child who was subject to more than one Case Conference and Child Protection registration during the year will now be counted more than once by some local authorities.

As a result of this change any comparisons pre- and post- 2005/06 should be made with caution.

## **Changes over Time**

In 2008/09, some local authorities reported a change in recording methods and practices. In addition, local authorities also report child protection awareness campaigns for staff or members of the public which can affect comparisons over time.

It should be noted that different local authorities may classify child protection referrals differently. For example, some local authorities start the referral process at a different point and some local authorities do not include unborn children. As a result of these differences, comparisons across years and across local authorities should be made with caution.

## **Revisions to 2007/08 figures**

One local authority revised some of their previously published 2007/08 figures. These revisions have resulted in the number of child protection referrals and the number of child protection referrals that resulted in a case conference for 2007/08 being revised. The same local authority also revised the number of children on child protection registers at 31<sup>st</sup> March 2008.

## **Resources**

The information in this News Release was obtained from the statistical return. The attached link gives details of the statistics collected from each local authority.

<http://www.scotland.gov.uk/Topics/Statistics/Browse/Children/SurveyChildProtection>

This Statistics Publication Notice is available on the Scottish Government website at:-  
[www.scotland.gov.uk/stats/bulletins/00763](http://www.scotland.gov.uk/stats/bulletins/00763)

Related publications on referrals, assessments and children who are the subject of a child protection plan can be found at:-

England: 2008/09 Child Protection Statistics for England were released on Thursday 17 September

2009. The following link shows the latest statistical publications for child protection:

<http://www.dcsf.gov.uk/rsgateway/DB/SFR/s000873/index.shtml>

Wales: Child protection data at 31 March 2009 will be published as part of the Children Services data was published

on 23 September 2009 and the Child Protection bulletin 2009 will be published on 26 November

2009. Figures for 2008 are available at:

Children's services: <http://www.dataunitwales.gov.uk/News.asp?id=SXE605-A77FC222>

Child protection bulletin:

<http://www.dataunitwales.gov.uk/Publication.asp?id=SXE22E-A77FC7B3>

Northern Ireland: Children Order statistical tables and a Children Order statistical bulletin are published

annually. The latest and historical figures for both are available at:

[http://www.dhsspsni.gov.uk/index/stats\\_research/stats-cib/stats-cib\\_pubs/stats-cib-children\\_order\\_bulletin.htm](http://www.dhsspsni.gov.uk/index/stats_research/stats-cib/stats-cib_pubs/stats-cib-children_order_bulletin.htm)

More information on other children's areas and social work staffing, can be seen at <http://www.scotland.gov.uk/childrenstats>

## **General**

This is a National Statistics publication for Scotland. National Statistics are produced to high professional standards set out in the Code of Practice for Official Statistics at <http://www.statisticsauthority.gov.uk/assessment/code-of-practice/code-of-practice-for-official-statistics.pdf> . They undergo regular quality assurance reviews to ensure that they meet customer needs and are produced free from any political interference.

Statistics assessed, or subject to assessment, by the UK Statistics Authority carry the National Statistics label, a stamp of assurance that the statistics have been produced and explained to high standards and that they serve the public good.

Further information about Official and National Statistics can be found on the UK Statistics Authority website at [www.statisticsauthority.gov.uk](http://www.statisticsauthority.gov.uk)

## **SCOTTISH GOVERNMENT STATISTICS GROUP**

### **Our Aim**

To provide relevant and reliable information, analysis and advice that meet the needs of government, business and the people of Scotland.

For more information on the Statistician Group, please see the Scottish Government website at [www.scotland.gov.uk/statistics](http://www.scotland.gov.uk/statistics)

For public enquiries (**non-media**) about the information contained in this Statistics Publication Notice, or for more detailed information, please contact:-

Denise Macleod  
Children, Young People and Social Care Statistics  
The Scottish Government  
Mail Point 1, Area 1-B South  
Victoria Quay  
EDINBURGH EH6 6QQ.  
Telephone: 0131 244 0313  
e-mail: [children.statistics@scotland.gsi.gov.uk](mailto:children.statistics@scotland.gsi.gov.uk)

For **media enquiries**, please contact Brendan Rooney on 0131 244 2960.  
The Scottish Government website is [www.scotland.gov.uk](http://www.scotland.gov.uk) .

**General enquiries** on Scottish Government statistics can be addressed to:

Office of the Chief Statistician  
Scottish Government  
1N.04, St Andrews House  
EDINBURGH EH1 3DG  
Telephone: 0131 244 0442  
e-mail: [statistics.enquiries@scotland.gsi.gov.uk](mailto:statistics.enquiries@scotland.gsi.gov.uk)

Further contact details, e-mail addresses and details of previous and forthcoming publications can be found on the Scottish Government website at [www.scotland.gov.uk/statistics](http://www.scotland.gov.uk/statistics)

### **Complaints and suggestions**

If you are not satisfied with our service, please write to the Chief Statistician, Mr Rob Wishart, 1N.04, St Andrews House, Edinburgh, EH1 3DG, Telephone: 0131 244 0302, e-mail [rob.wishart@scotland.gsi.gov.uk](mailto:rob.wishart@scotland.gsi.gov.uk) . We also welcome any comments or suggestions that would help us to improve our standards of service.

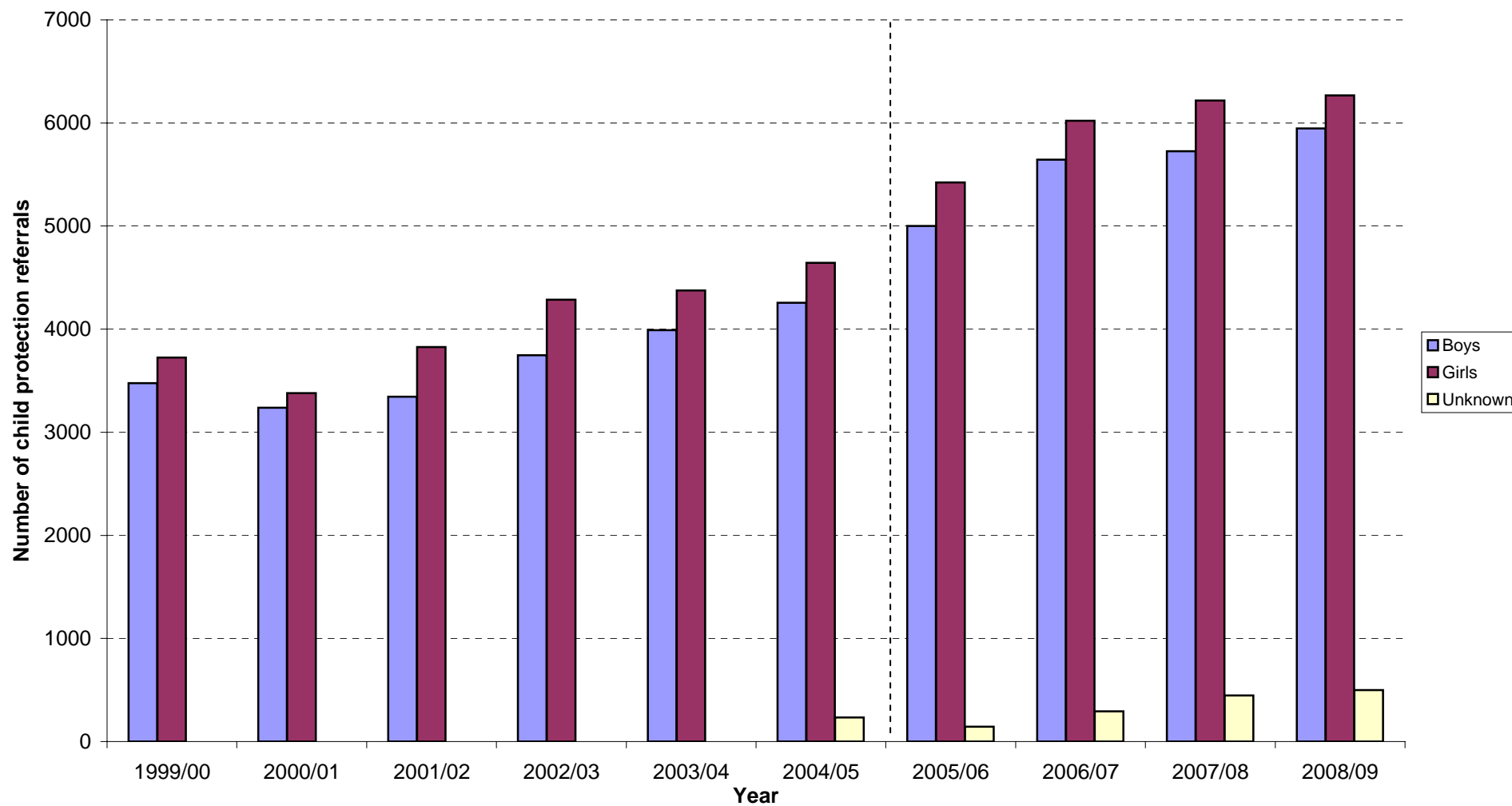
### **ScotStat**

If you would like to be consulted about new or existing statistical collections or receive notification of forthcoming statistical publications, please register your interest on the Scottish Government ScotStat website at [www.scotland.gov.uk/scotstat](http://www.scotland.gov.uk/scotstat)

### **Crown Copyright**

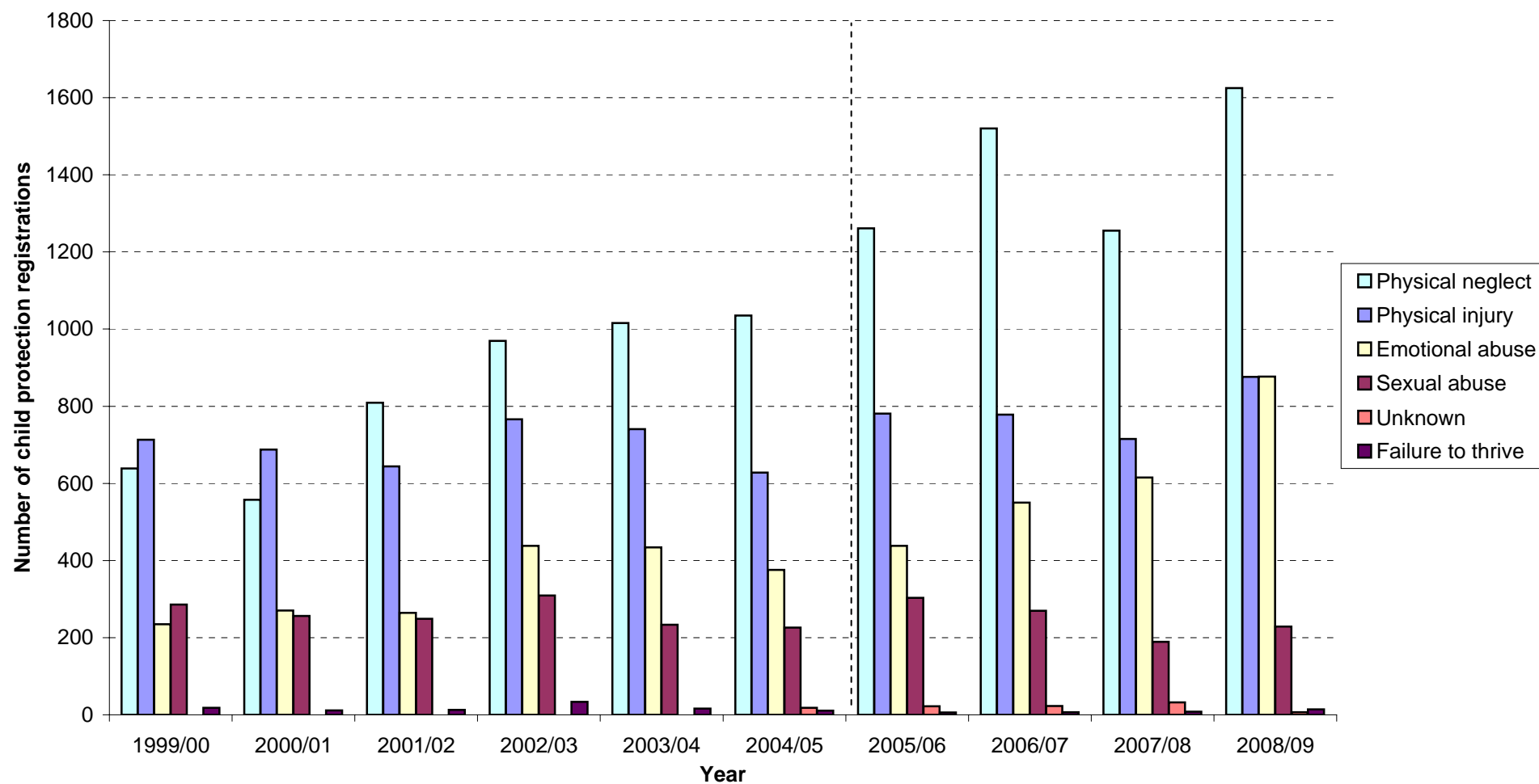
Brief extracts from the Crown Copyright material in this publication may be reproduced provided the source is fully acknowledged.

**Chart 1: Number of child protection referrals by gender, 1999/00 - 2008/09**



Notes: Figures prior to 2005/06 may not be directly comparable due to a definitional change in the way child protection referrals were counted. Some revisions to 2007/08 data.

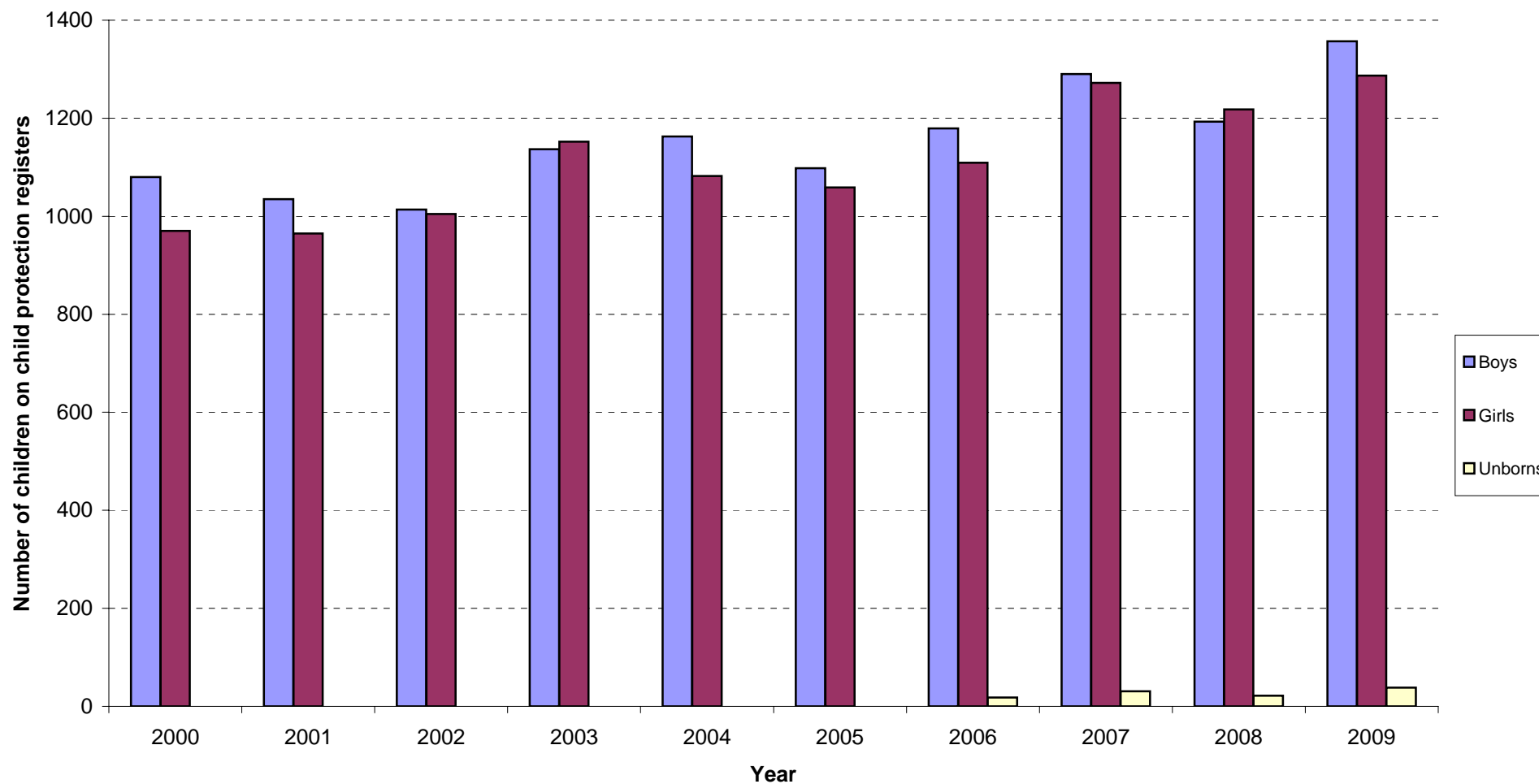
**Chart 2: Number of registrations to child protection registers following a case conference by category of abuse/risk, 1999/00 - 2008/09**



Note: Figures prior to 2005/06 may not be directly comparable due to a definitional change in the way child protection referrals were counted

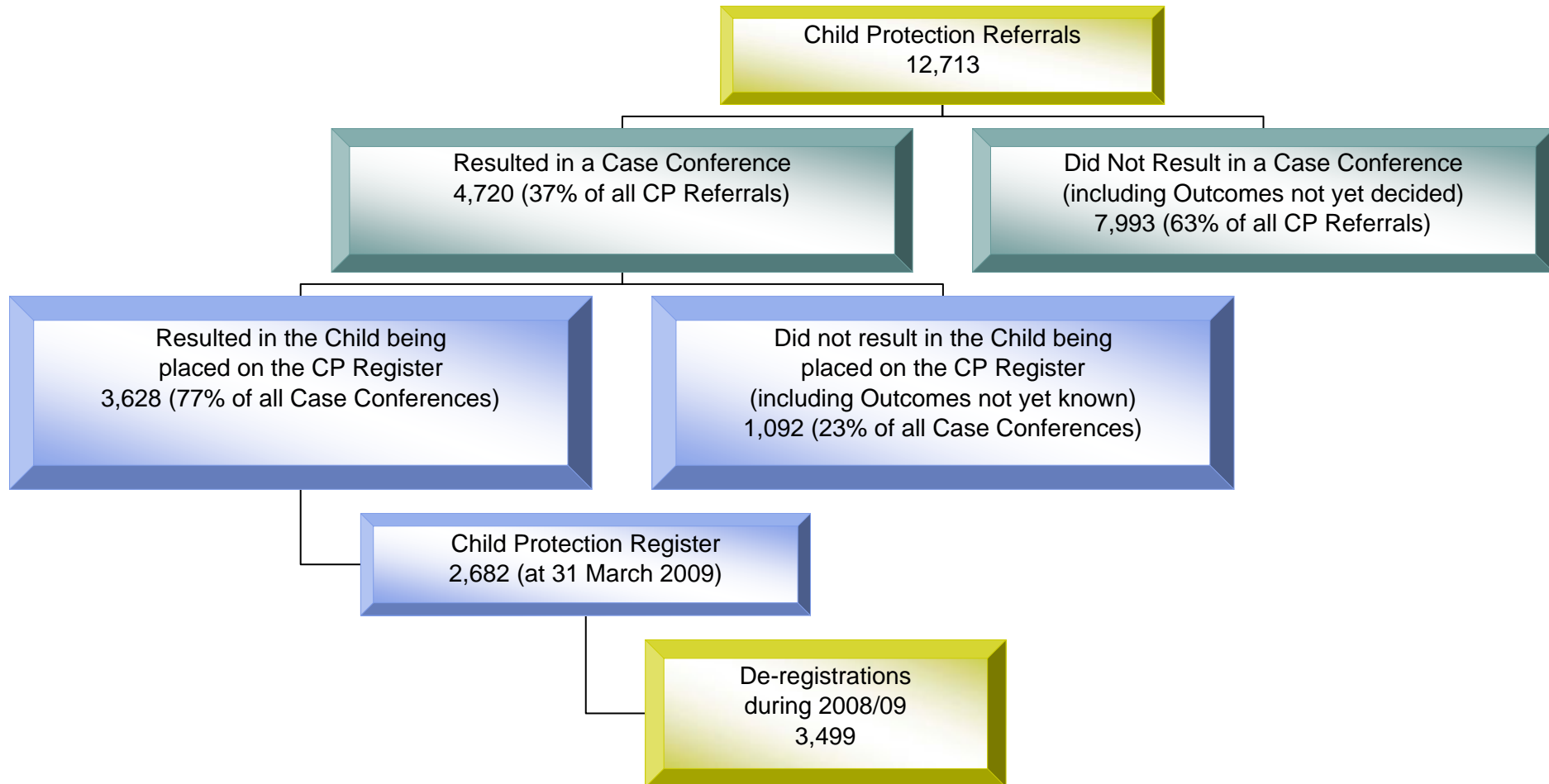


**Chart 3: Number of children on child protection registers by gender, at 31 March 2000-2009**



Note: Some revisions to 2007/08 data

**Chart 4: Child Protection Statistics 2008/09 - Flow Chart**



**TABLE 1**  
**NUMBER OF CHILD PROTECTION REFERRALS: 1999/00-2008/09**  
**BY GENDER AND AGE GROUP**

Age/gender	Year Ended 31 March.....										% of total 2009	% change 2008-2009
	2000	2001	2002	2003	2004	2005	2006	2007	2008	2009		
<b>Boys</b>												
Unborns	-	-	-	-	-	-	49	-	-	-		
0-4	1,286	1,053	1,023	1,252	1,260	1,444	1,554	1,816	1,872	2,045	16%	9%
5-10	1,250	1,142	1,267	1,400	1,555	1,515	1,862	2,108	2,092	2,159	17%	3%
11-15	907	1,002	1,003	1,044	1,114	1,169	1,407	1,621	1,683	1,683	13%	0%
16+	34	41	53	50	61	83	95	81	65	52	0%	-20%
Unknown	-	-	-	-	-	46	33	18	13	8	0%	-38%
<b>Total</b>	<b>3,477</b>	<b>3,239</b>	<b>3,345</b>	<b>3,746</b>	<b>3,990</b>	<b>4,257</b>	<b>5,000</b>	<b>5,644</b>	<b>5,725</b>	<b>5,947</b>	<b>47%</b>	<b>4%</b>
<b>Girls</b>												
Unborns	-	-	-	-	-	-	56	-	-	-	-	-
0-4	1,152	915	1,035	1,232	1,240	1,331	1,488	1,805	1,793	1,888	15%	5%
5-10	1,216	1,121	1,215	1,436	1,396	1,462	1,677	1,837	2,001	1,948	15%	-3%
11-15	1,313	1,282	1,496	1,536	1,589	1,675	1,995	2,192	2,235	2,278	18%	2%
16+	43	62	81	83	150	117	156	159	175	142	1%	-19%
Unknown	-	-	-	-	-	58	52	29	13	12	0%	-8%
<b>Total</b>	<b>3,724</b>	<b>3,380</b>	<b>3,827</b>	<b>4,287</b>	<b>4,376</b>	<b>4,643</b>	<b>5,424</b>	<b>6,022</b>	<b>6,217</b>	<b>6,268</b>	<b>49%</b>	<b>1%</b>
<b>Gender Unknown</b>												
<b>Total</b>	-	-	-	-	-	233	143	294	448	498	4%	11%
<b>All people</b>												
Unborns	-	-	-	-	-	-	200	270	331	435	3%	31%
0-4	2,438	1,968	2,058	2,485	2,500	2,837	3,053	3,634	3,698	3,951	31%	7%
5-10	2,466	2,263	2,482	2,835	2,951	3,021	3,541	3,952	4,133	4,120	32%	0%
11-15	2,220	2,284	2,498	2,580	2,704	2,885	3,404	3,817	3,954	3,986	31%	1%
16+	77	103	134	134	211	205	251	240	244	195	2%	-20%
Unknown	-	-	-	-	-	185	118	47	30	26	0%	-13%
<b>Total</b>	<b>7,201</b>	<b>6,619</b>	<b>7,172</b>	<b>8,033</b>	<b>8,366</b>	<b>9,133</b>	<b>10,567</b>	<b>11,960</b>	<b>12,390</b>	<b>12,713</b>	<b>100%</b>	<b>3%</b>

**Note** : From 1999/00 to 2003/04, 'unknowns' were allocated to a category rather than being reported as unknown.

**Note** : Since 2006/07, the gender-split for unborns was not requested so these are all allocated as 'unknown gender'.

**Note** : Data prior to 2005/06 are not comparable to previous years due to definitional change for referrals (see background notes).

**Note** : For cells shown as "-", figures are not available.

**Note**: Some revisions to 2007/08 data (see background notes).

**TABLE 2**

**NUMBER OF CHILD PROTECTION REFERRALS THAT RESULTED IN A CASE CONFERENCE: 1999/00-2008/09**  
**BY PLACEMENT OF CHILDREN PRIOR TO REFERRAL**

Placement of children prior to referral	Year Ended 31 March.....										% of total	% change
	2000	2001	2002	2003	2004	2005	2006	2007	2008	2009	2009	2008-2009
At home	2,281	2,006	2,382	2,878	2,915	2,661	3,321	3,818	3,392	3,737	79%	10%
With relatives	113	150	170	97	163	121	133	141	180	164	3%	-9%
With foster carers	75	73	210	135	166	91	88	56	76	71	2%	-7%
In a residential establishment	23	25	27	29	30	18	30	19	18	13	0%	-28%
Other placement	100	98	62	105	77	122	138	128	161	201	4%	25%
Unknown	-	-	-	-	-	290	322	446	479	534	11%	11%
<b>Total</b>	<b>2,593</b>	<b>2,352</b>	<b>2,851</b>	<b>3,244</b>	<b>3,351</b>	<b>3,303</b>	<b>4,032</b>	<b>4,608</b>	<b>4,306</b>	<b>4,720</b>	<b>100%</b>	<b>10%</b>

**Note** : For cells shown as "-", figures are not available.

**Note** : From 1999/00 to 2003/04, 'unknowns' were allocated to a category rather than being reported as unknown.

**Note** : Figures prior to 2005/06 figures may not be directly comparable due to a definitional change in counting child protection referrals made in 2005/06 (see background notes).

**Note**: Some revisions to 2007/08 data (see background notes).

**TABLE 3**  
**NUMBER OF CHILD PROTECTION REFERRALS THAT RESULTED IN A CASE CONFERENCE: 1999/00-2008/09**  
**BY CHILD'S PRIMARY KNOWN/SUSPECTED ABUSER**

Primary known/suspected abuser	Year Ended 31 March.....										% of known	% change
	2000	2001	2002	2003	2004	2005	2006	2007	2008	2009	total 2009	2008-2009
Natural parent	2,034	1,808	2,154	2,493	2,640	1,709	1,972	2,351	2,674	3,465	85%	30%
Step parent	122	85	100	128	133	67	109	55	74	122	3%	65%
Parent's co-habitee	191	152	255	263	175	119	174	139	154	194	5%	26%
Other relative (including sibling)	142	167	172	165	203	124	116	98	115	170	4%	48%
Other person known to child / family	86	83	105	137	149	96	117	72	76	108	3%	42%
Person unknown to child / family	18	56	64	58	51	29	9	6	16	20	0%	25%
Child him/herself was known/suspected perpetrator	-	-	-	-	-	-	6	12	3	16	0%	433%
Unknown	-	-	-	-	-	1,159	1,529	1,875	1,194	625	-	-48%
<b>Total</b>	<b>2,593</b>	<b>2,352</b>	<b>2,851</b>	<b>3,244</b>	<b>3,351</b>	<b>3,303</b>	<b>4,032</b>	<b>4,608</b>	<b>4,306</b>	<b>4,720</b>	<b>100%</b>	<b>10%</b>

**Note** : For cells shown as "-", figures are not available.

**Note** : From 1999/00 to 2003/04, 'unknowns' were allocated to a category rather than being reported as unknown.

**Note** : Figures prior to 2005/06 may not be directly comparable due to a definitional change in counting child protection referrals made in 2005/06 (see background notes).

**Note**: Some revisions to 2007/08 data (see background notes).

**TABLE 4**  
**NUMBER OF REGISTRATIONS FOLLOWING A CASE CONFERENCE: 1999/00-2008/09**  
**BY CATEGORY OF ABUSE/RISK IDENTIFIED BY CONFERENCE**

Category of abuse/risk	Year Ended 31 March.....										% of total 2009	% change 2008-2009
	2000	2001	2002	2003	2004	2005	2006	2007	2008	2009		
Physical injury	713	688	644	766	741	628	781	778	715	876	24%	23%
Sexual abuse	286	256	249	310	234	226	303	270	189	229	6%	21%
Emotional abuse	235	270	264	438	434	376	438	550	615	877	24%	43%
Physical neglect	639	558	809	969	1,015	1,035	1,261	1,520	1,255	1,625	45%	29%
Failure to thrive	18	11	13	33	16	11	6	7	8	14	0%	75%
Unknown	-	-	-	-	-	18	22	23	32	7	0%	-78%
<b>Total</b>	<b>1,890</b>	<b>1,783</b>	<b>1,979</b>	<b>2,517</b>	<b>2,440</b>	<b>2,294</b>	<b>2,811</b>	<b>3,148</b>	<b>2,814</b>	<b>3,628</b>	<b>100%</b>	<b>29%</b>

**Note** : From 1999/00 to 2003/04, 'unknowns' were allocated to a category rather than being reported as unknown.

**Note** : Figures prior to 2005/06 may not be comparable due to a definitional change made in counting child protection referrals in 2005/06 (see background notes).

**Note** : Prior to 2005/06, 'Failure to thrive' included child known/suspected perpetrator.

**TABLE 5**  
**NUMBER OF REGISTRATIONS FOLLOWING A CASE CONFERENCE: 2005/06 - 2008/09**  
**BY LENGTH OF TIME SINCE DE-REGISTRATION BEFORE THIS REGISTRATION**

Category of abuse/risk	Year Ended 31 March.....				% of total 2009
	2006	2007	2008	2009	
Never been registered before	2,150	2,565	2,355	3,103	86%
Registered before but time unknown	-	8	5	0	0%
Less than 6 months	64	92	95	68	2%
6 months - < 1 year	58	68	68	78	2%
1 year - < 18 months	27	46	48	94	3%
18 months - < 2 years	35	43	53	54	1%
2 years or more	204	120	181	231	6%
Not known if been registered before	273	206	9	0	0%
<b>Total</b>	<b>2,811</b>	<b>3,148</b>	<b>2,814</b>	<b>3,628</b>	<b>100%</b>

Note : 'Registered before but time unknown' was not collected prior to 2006/07

**TABLE 6**  
**NUMBER OF DE-REGISTRATIONS : 1999/00-2008/09**  
**BY CATEGORY OF ABUSE/RISK IDENTIFIED, LENGTH OF TIME ON REGISTER AND REASON FOR DE-REGISTRATION**

	Year Ended 31 March.....										% of total	% change
	2000	2001	2002	2003	2004	2005	2006	2007	2008	2009	2009	2008-2009
<b>Category of abuse/risk</b>												
Physical injury	839	627	758	770	792	714	808	784	789	841	24%	7%
Sexual abuse	358	300	296	318	313	277	293	322	264	179	5%	-32%
Emotional abuse	222	202	319	397	454	427	478	599	615	830	24%	35%
Physical neglect	673	513	825	907	1,041	1,115	1,284	1,367	1,491	1,633	47%	10%
Failure to thrive	19	44	18	17	32	18	9	3	7	14	0%	100%
Unknown	-	-	-	-	-	23	15	9	31	2	0%	-94%
<b>Length of time registered</b>												
Less than 6 months	716	570	815	942	1,085	901	1,097	1,329	1,245	1,498	43%	20%
6 months to under 1 year	702	543	729	835	843	971	1,052	1,092	1,148	1,178	34%	3%
1 year to under 18 months	305	303	328	316	407	357	404	362	470	447	13%	-5%
18 months to under 2 years	163	127	185	151	131	161	166	158	202	197	6%	-2%
2 years or more	226	144	159	164	168	184	168	143	132	179	5%	36%
<b>Reason for De-registration</b>												
Child taken into care & risk reduced	-	-	-	-	-	-	-	-	411	536	15%	30%
Child with other carers	-	-	-	-	-	-	-	-	218	295	8%	35%
Child died	-	-	-	-	-	-	-	-	4	6	0%	50%
Removal of perpetrator	-	-	-	-	-	-	-	-	112	82	2%	-27%
Improved home situation	-	-	-	-	-	-	-	-	830	1,195	34%	44%
Reduced risk (other)	-	-	-	-	-	-	-	-	1,449	1,201	34%	-17%
Child automatically de-registered because of age	-	-	-	-	-	-	-	-	12	16	0%	33%
Child moved away - no continued risk	-	-	-	-	-	-	-	-	24	33	1%	38%
Child transferred to another local authority	-	-	-	-	-	-	-	-	137	135	4%	-1%
<b>Total</b>	<b>2,112</b>	<b>1,687</b>	<b>2,216</b>	<b>2,408</b>	<b>2,633</b>	<b>2,574</b>	<b>2,887</b>	<b>3,084</b>	<b>3,197</b>	<b>3,499</b>	<b>100%</b>	<b>9%</b>

**Note** : From 1999/00 to 2003/04, 'unknowns' were allocated to a category rather than being reported as unknown.

**Note** : Prior to 2005/06, 'Failure to thrive' included child known/suspected perpetrator.

**Note** : Information on the reason for de-registration is not available prior to 2007/08.



**TABLE 7**  
**NUMBER OF CHILDREN ON CHILD PROTECTION REGISTERS: 31 MARCH 2000-2009**  
**BY GENDER AND AGE GROUP**

Age group/ gender	As at 31 March.....										% of total 2009	% of Scottish population	% change 2008-2009
	2000	2001	2002	2003	2004	2005	2006	2007	2008	2009			
<b>Boys</b>													
Unborns	-	-	-	-	-	-	6	-	-	-	-	-	-
0-4	483	454	476	490	523	533	554	625	598	692	26%	0.5%	16%
5-10	368	348	354	408	417	355	407	434	378	446	17%	0.3%	18%
11-15	217	224	179	235	215	206	207	226	211	215	8%	0.1%	2%
16+	11	8	4	4	8	4	5	5	6	4	0%	0.0%	-33%
Unknown	0	0	0	0	0	0	0	0	0	0	0%	-	-
<b>Total</b>	<b>1,080</b>	<b>1,035</b>	<b>1,013</b>	<b>1,137</b>	<b>1,163</b>	<b>1,098</b>	<b>1,179</b>	<b>1,290</b>	<b>1,193</b>	<b>1,357</b>	<b>51%</b>	<b>0.3%</b>	<b>14%</b>
<b>Girls</b>													
Unborns	-	-	-	-	-	-	12	-	-	-	-	-	-
0-4	354	371	458	481	497	493	490	607	602	649	24%	0.5%	8%
5-10	351	344	327	405	377	354	370	421	409	399	15%	0.2%	-2%
11-15	249	236	208	258	199	208	228	234	201	231	9%	0.2%	15%
16+	17	15	12	8	9	4	9	10	5	8	0%	0.0%	60%
Unknown	0	0	0	0	0	0	0	0	1	0	0%	-	-
<b>Total</b>	<b>970</b>	<b>965</b>	<b>1,005</b>	<b>1,152</b>	<b>1,082</b>	<b>1,059</b>	<b>1,109</b>	<b>1,272</b>	<b>1,218</b>	<b>1,287</b>	<b>48%</b>	<b>0.3%</b>	<b>6%</b>
<b>All people</b>													
Unborns	-	-	-	-	-	-	18	31	22	38	1%	-	-
0-4	837	825	933	971	1,020	1,026	1,044	1,232	1,200	1,341	50%	0.5%	12%
5-10	718	693	681	813	794	710	777	855	787	845	32%	0.3%	7%
11-15	466	460	387	493	414	413	435	460	412	446	17%	0.1%	8%
16+	28	23	16	12	17	8	14	15	11	12	0%	0.0%	9%
Unknown	0	0	0	0	0	0	0	0	1	0	0%	-	-
<b>Total</b>	<b>2,050</b>	<b>2,000</b>	<b>2,018</b>	<b>2,289</b>	<b>2,245</b>	<b>2,157</b>	<b>2,288</b>	<b>2,593</b>	<b>2,433</b>	<b>2,682</b>	<b>100%</b>	<b>0.3%</b>	<b>10%</b>

**Source** : General Register Office (Scotland) - 2008 mid-year population estimates

**Note** : For Age 16+, relevant population used was 16-17 years old

**Note** : Information on unborns is not available prior to 2005/06, or available split by gender since 2006/07

**Note**: Some revisions to 2007/08 data (see background notes).

**TABLE 8**  
**NUMBER OF CHILDREN ON CHILD PROTECTION REGISTERS: 31 MARCH 2006-2009**  
**BY CATEGORY OF ABUSE/RISK IDENTIFIED, ETHNIC GROUP AND DISABILITY STATUS**

	As at 31 March.....				% of total 2009	% change 2008-2009
	2006	2007	2008	2009		
Category of abuse/risk						
Physical injury	626	585	509	554	21%	9%
Sexual abuse	266	240	160	190	7%	19%
Emotional abuse	371	472	572	678	25%	19%
Physical neglect	1,020	1,275	1,166	1,249	47%	7%
Failure to thrive	*	7	10	*	*	*
Unknown	*	14	16	*	*	*
Ethnic Group						
White	-	-	-	2194	82%	-
Mixed Ethnicity	-	-	-	45	2%	-
Asian, Asian Scottish or Asian British	-	-	-	12	0%	-
Black, Black Scottish or Black British	-	-	-	15	1%	-
Other Ethnic Background	-	-	-	27	1%	-
Not disclosed	-	-	-	40	1%	-
Not known	-	-	-	349	13%	-
Disability Status						
Specific learning difficulties	-	-	-	12	0%	-
Mental Health problem	-	-	-	*	*	-
Autistic spectrum disorder	-	-	-	7	0%	-
Hearing impairment	-	-	-	*	*	-
Language and communication disorder	-	-	-	7	0%	-
Physical or motor impairment	-	-	-	16	1%	-
Visual impairment	-	-	-	5	0%	-
Social, emotional and behavioural difficulties	-	-	-	63	2%	-
Learning disability	-	-	-	44	2%	-
Combined Sight and Hearing Loss (deafblind)	-	-	-	0	0%	-
Other chronic illness/disability	-	-	-	29	1%	-
Multiple disabilities	-	-	-	8	0%	-
No disabilities	-	-	-	1867	70%	-
Unknown	-	-	-	618	23%	-
<b>Total</b>	<b>2,288</b>	<b>2,593</b>	<b>2,433</b>	<b>2,682</b>	<b>100%</b>	<b>10%</b>

**Note** : Cells containing \* represent small numbers that are suppressed to maintain confidentiality.

**Note**: Ethnic Group and Disability Status not collected prior to 2008/09.

**Note**: Some revisions to 2007/08 data (see background notes).

**TABLE 9**  
**NUMBERS OF CHILD PROTECTION REFERRALS, SUBJECT TO A CASE CONFERENCE, REGISTRATIONS, DE-REGISTRATIONS**  
**AND ON CHILD PROTECTION REGISTERS: 2000-2009**

Summary	Year Ended 31 March.....										% change	% change
	2000	2001	2002	2003	2004	2005	2006	2007	2008	2009	2008-2009	2000-2009
Referrals	7,201	6,619	7,172	8,033	8,366	9,133	10,567	11,960	12,390	12,713	3%	77%
Case Conferences	2,593	2,352	2,851	3,244	3,351	3,303	4,032	4,608	4,306	4,720	10%	82%
Registrations	1,890	1,783	1,979	2,517	2,440	2,294	2,811	3,148	2,814	3,628	29%	92%
De-registrations	2,112	1,687	2,216	2,408	2,633	2,574	2,887	3,084	3,197	3,499	9%	66%
Children on CP registers (at 31 March....)	2,050	2,000	2,018	2,289	2,245	2,157	2,288	2,593	2,433	2,682	10%	31%

**Note** : Please refer to footnotes in Tables 1-8.

**Note** : Figures for referrals, case conferences and registrations prior to 2005/06 may not be comparable due to a definitional change made in counting child protection referrals in 2005/06 (see background notes).

**Note**: Some revisions to 2007/08 data (see background notes).

**TABLE 10**  
**NUMBER OF CHILDREN ON CHILD PROTECTION REGISTERS AND POPULATION RATES: 31 MARCH 2000-2009**  
**BY LOCAL AUTHORITY AREA**

Local authority area	As at 31 March...											
	2000	2001	2002	2003	2004	2005	2006	2007	2008	2009		
	Number on Register Rate per 1,000 population aged 0-15	Number on Register Rate per 1,000 population aged 0-15	Number on Register Rate per 1,000 population aged 0-15	Number on Register Rate per 1,000 population aged 0-15	Number on Register Rate per 1,000 population aged 0-15	Number on Register Rate per 1,000 population aged 0-15	Number on Register Rate per 1,000 population aged 0-15	Number on Register Rate per 1,000 population aged 0-15	Number on Register Rate per 1,000 population aged 0-15	Number on Register Rate per 1,000 population aged 0-15	Number on Register Rate per 1,000 population aged 0-15	Number on Register Rate per 1,000 population aged 0-15
Aberdeen City	144 3.7	148 4.3	176 4.9	163 4.8	150 4.5	147 4.5	159 4.8	142 4.3	122 3.7	182 5.5		
Aberdeenshire	89 1.9	82 1.7	113 2.4	112 2.4	104 2.2	108 2.3	105 2.3	68 1.5	78 1.7	81 1.7		
Angus	50 2.3	45 2.2	45 2.2	86 4.3	61 3.0	53 2.6	62 3.1	88 4.4	113 5.7	82 4.1		
Argyll & Bute	42 2.7	18 1.1	25 1.5	48 2.9	44 2.7	39 2.4	56 3.5	34 2.2	43 2.8	32 2.1		
Clackmannanshire	20 2.0	11 1.1	17 1.7	29 3.0	28 2.9	12 1.3	24 2.5	23 2.4	29 3.0	58 6.0		
Dumfries & Galloway	55 2.0	111 4.0	59 2.1	101 3.7	62 2.3	62 2.4	48 1.8	57 2.2	71 2.8	79 3.1		
Dundee City	42 1.5	45 1.8	50 1.9	79 3.1	67 2.7	83 3.4	93 3.9	89 3.7	80 3.4	95 4.0		
East Ayrshire	14 0.6	10 0.4	27 1.1	31 1.3	35 1.5	41 1.8	44 2.0	45 2.0	83 3.8	75 3.5		
East Dunbartonshire	14 0.7	4 0.2	10 0.5	14 0.7	19 0.9	8 0.4	9 0.4	25 1.3	18 0.9	27 1.4		
East Lothian	70 3.9	60 3.2	49 2.6	77 4.1	57 3.1	27 1.5	44 2.4	46 2.5	57 3.0	84 4.5		
East Renfrewshire	19 1.1	21 1.1	18 0.9	7 0.4	9 0.5	15 0.8	20 1.1	18 1.0	31 1.7	29 1.6		
Edinburgh, City of	317 4.1	309 4.2	315 4.2	332 4.6	326 4.6	234 3.3	290 4.1	311 4.4	276 3.9	287 4.1		
Eilean Siar	12 2.2	19 3.8	11 2.1	18 3.7	23 4.8	13 2.7	12 2.5	15 3.2	2 0.4	23 5.1		
Falkirk	73 2.6	86 3.0	63 2.2	64 2.3	67 2.4	68 2.4	55 1.9	81 2.9	86 3.1	93 3.3		
Fife	76 1.1	65 0.9	83 1.2	96 1.4	122 1.8	118 1.8	168 2.5	202 3.1	150 2.3	191 2.9		
Glasgow City	325 2.8	305 2.9	242 2.2	207 2.0	275 2.7	264 2.7	308 3.1	353 3.6	304 3.1	299 3.1		
Highland	166 3.9	96 2.3	112 2.7	124 3.1	102 2.6	118 3.0	111 2.8	125 3.2	60 1.5	69 1.8		
Inverclyde	8 0.5	9 0.6	20 1.2	34 2.1	7 0.4	34 2.2	33 2.2	30 2.0	32 2.2	42 3.0		
Midlothian	57 3.5	56 3.3	62 3.6	67 4.0	68 4.2	71 4.5	50 3.2	80 5.1	74 4.8	90 5.9		
Moray	22 1.2	30 1.7	28 1.6	33 1.9	45 2.6	70 4.1	56 3.5	72 4.5	89 5.6	66 4.2		
North Ayrshire	41 1.5	22 0.8	10 0.4	22 0.8	26 1.0	27 1.0	34 1.3	56 2.2	44 1.8	56 2.3		
North Lanarkshire	52 0.8	48 0.7	68 1.0	84 1.3	78 1.2	92 1.4	61 1.0	100 1.6	57 0.9	74 1.2		
Orkney Isles	2 0.5	7 1.8	2 0.5	1 0.3	8 2.2	4 1.1	7 1.9	20 5.6	7 2.0	4 1.1		
Perth & Kinross	36 1.4	60 2.3	52 2.0	51 2.0	41 1.6	37 1.5	31 1.2	47 1.9	43 1.7	43 1.7		
Renfrewshire	51 1.4	78 2.3	71 2.1	86 2.6	65 2.0	69 2.2	79 2.5	87 2.8	106 3.4	126 4.1		
Scottish Borders	37 1.8	31 1.5	37 1.8	48 2.4	44 2.2	37 1.8	46 2.3	63 3.1	30 1.5	47 2.3		
Shetland	10 2.0	11 2.3	12 2.4	8 1.7	17 3.7	8 1.7	13 2.8	10 2.3	14 3.2	11 2.6		
South Ayrshire	7 0.3	13 0.6	5 0.2	27 1.4	19 1.0	28 1.4	17 0.9	29 1.5	29 1.6	31 1.7		
South Lanarkshire	67 1.1	71 1.2	86 1.4	94 1.6	137 2.4	115 2.0	99 1.7	127 2.2	140 2.4	117 2.1		
Stirling	21 1.3	31 1.9	35 2.1	50 3.0	25 1.5	29 1.7	21 1.3	28 1.7	48 2.9	50 3.1		
West Dunbartonshire	21 1.0	14 0.8	25 1.3	13 0.7	32 1.8	23 1.3	28 1.7	22 1.3	27 1.6	31 1.9		
West Lothian	90 2.7	84 2.4	90 2.6	83 2.4	82 2.4	103 3.0	105 3.1	100 2.9	90 2.6	108 3.1		
<b>Scotland</b>	<b>2,050 2.0</b>	<b>2,000 2.1</b>	<b>2,018 2.0</b>	<b>2,289 2.4</b>	<b>2,245 2.4</b>	<b>2,157 2.3</b>	<b>2,288 2.5</b>	<b>2,593 2.8</b>	<b>2,433 2.7</b>	<b>2,682 2.9</b>		

**Source** : General Register Office (Scotland) - 2000-2008 mid-year population estimates

**Note**: Some revisions to 2007/08 data (see background notes).

**TABLE 11**  
**NUMBERS OF CHILD PROTECTION REFERRALS, SUBJECT TO A CASE CONFERENCE, REGISTRATIONS,**  
**DE-REGISTRATIONS AND ON CHILD PROTECTION REGISTERS BY LOCAL AUTHORITY AREA: 2008/09**

Local authority area	Year Ended 31 March 2009				As at 31 March 2009
	Number of Referrals	Number Subject to a Case Conference	Number of Registrations	Number of De-registrations	Number on Register
Aberdeen City	435	268	229	169	182
Aberdeenshire	337	103	94	91	81
Angus	264	136	98	139	82
Argyll & Bute	167	84	58	64	32
Clackmannanshire	200	92	60	33	58
Dumfries & Galloway	446	153	122	114	79
Dundee City	213	124	114	105	95
East Ayrshire	189	100	79	150	75
East Dunbartonshire	192	116	51	33	27
East Lothian	369	100	84	53	84
East Renfrewshire	95	42	33	33	29
Edinburgh, City of	1,439	407	349	354	287
Eilean Siar	57	25	25	4	23
Falkirk	434	148	109	92	93
Fife	1,467	291	256	215	191
Glasgow City	935	570	497	500	299
Highland	618	141	120	101	69
Inverclyde	325	146	96	86	42
Midlothian	685	129	129	113	90
Moray	256	86	72	96	66
North Ayrshire	423	141	91	79	56
North Lanarkshire	507	239	130	117	74
Orkney Isles	77	13	6	11	4
Perth & Kinross	159	88	67	71	43
Renfrewshire	413	277	176	167	126
Scottish Borders	266	76	63	48	47
Shetland	111	23	15	18	11
South Ayrshire	155	84	59	57	31
South Lanarkshire	420	205	122	189	117
Stirling	304	71	63	58	50
West Dunbartonshire	158	113	45	41	31
West Lothian	597	129	116	98	108
<b>Scotland</b>	<b>12,713</b>	<b>4,720</b>	<b>3,628</b>	<b>3,499</b>	<b>2,682</b>

**Note** : Please refer to footnotes in Tables 1-10.