

Statistics Publication Notice

Health and Care Series

ISBN 978 9 7559 6864 0

ISSN 1479-7569 (*online*)

A National Statistics Publication for Scotland

CHILDREN LOOKED AFTER STATISTICS 2006-07

28 November 2007

Scotland's Chief Statistician today published [Children Looked After Statistics 2006-07](#). This publication contains statistics on children who were looked after by or eligible for aftercare support from local authorities between 1st April 2006 and 31st March 2007.

The main findings are:

- At 31st March 2007 there were 14,060 children looked after by local authorities, an increase of eight per cent since 2006. The number of children looked after has increased by 26 per cent since 1999.
- Forty three per cent of children looked after were placed at home with parents, and 15 per cent were looked after by friends or relatives. Twenty nine per cent were looked after by foster carers. Twelve per cent were in residential accommodation.
- At 31st March 2007 there were 2,159 children being looked after on a series of short term placements. Almost half of all these were looked after in residential establishments.
- Of the young people who left care during 2006-07 beyond minimum school leaving age, 52 per cent had at least one qualification at SCQF level 3 or above, an increase of one percentage point since 2005-06, and 34 per cent had both English and Maths at this level, no increase since 2005-06. The increase was seen only among children looked after away from home, with a decrease in those with both English and Maths among those looked after at home.
- There were around 3,400 young people reported to be eligible for aftercare services at 31st March 2007. Thirty eight per cent of those with known economic activity were in education, training or employment.

LOOKED AFTER CHILDREN

1. At 31st March 2007 there were 14,060 children looked after by local authorities, an increase of eight per cent since 2006. The number of children looked after has increased each year since 2001, by a total of 29 per cent. (Tables 1.1 and 2.1, Chart 1)
2. Fifty five per cent of children looked after on 31st March 2007 were male (Table 1.1). Sixty eight per cent were between five and 15, with half of these in the 12-15 age group.
3. Most children looked after on 31st March 2007 were under supervision requirement, either at home (40 per cent of all children looked after) or away from home (39 per cent). A further nine per cent were accommodated under Section 25 of the Children (Scotland) Act 1995. (Table 1.4 and 2.2)
4. Forty five per cent of children starting to be looked after were under a supervision requirement at home, 17 per cent were under a supervision requirement away from home, and 17 per cent were accommodated under Section 25. (Table 1.15)
5. Forty three per cent of children looked after were looked after at home with parents, and 15 per cent were looked after by friends or relatives. Twenty nine per cent were looked after by foster carers. (Tables 1.9 and 2.3)
6. The proportion of children looked after in residential care was 12 per cent nationally, ranging from three per cent in Perth & Kinross to 25 per cent in Argyll & Bute. (Table 3.3)
7. Thirty per cent of children looked after away from home had been looked after for between two and five years. Thirty eight per cent of these children were still in their first placement. Overall, 45 per cent of children looked after away from home were still on their first placement, and seven per cent had had six or more placements during their current episode of being looked after. (Table 1.10)
8. At 31st March 2007 there were 2,159 children being looked after on a series of short term placements, a decrease of three per cent on 2006. Sixty one per cent of these children were male. Almost half of all children looked after on a series of short term placements were looked after in residential establishments and 29 per cent were looked after by foster carers. (Tables 1.30, 1.31 and 2.8)

CARE LEAVERS

9. Between 1st April 2006 and 31st March 2007, 4,144 children left care, an increase of seven per cent on 2005-06. (Table 1.16 and 2.6)
10. In the majority of episodes of care that ended during 2006-07, the child's destination was home with parents (52 per cent). The remaining children had a range of destinations, with no more than nine per cent in any one. (Table 1.17)

11. Ten per cent of children ceasing to be looked after had been looked after for under six weeks. A further nine per cent had been looked after for five years or more, of which one per cent had been looked after for ten years or more. Around 40 per cent had been looked after for less than a year. (Table 1.20)
12. Forty five per cent of care leavers beyond minimum school leaving age who had been looked after at home achieved at least one qualification at SCQF level 3 or above, compared to 60 per cent of care leavers who had been looked after away from home. (Table 1.21)
13. Twenty six per cent of care leavers beyond minimum school leaving age who had been looked after at home achieved both English and Maths at SCQF level 3 or above, compared to 45 per cent of care leavers who had been looked after away from home. (Table 1.21)
14. Half of all care leavers beyond minimum school leaving age had a pathway plan and 55 per cent had a nominated pathway coordinator on 31st March 2007. (Table 1.23)

YOUNG PEOPLE ELIGIBLE FOR AFTERCARE SERVICES

15. Around 3,400 young people were reported to be eligible for aftercare services on 31st March 2007. However, as two local authorities did not provide any data and a further two provided incomplete data, all figures regarding aftercare should be used with caution. (Tables 1.24-1.29).
16. Eleven per cent of young people reported to be eligible for aftercare services were no longer in touch with the local authority on 31st March 2007, and the accommodation of a further 14 per cent was not known. Of those whose accommodation was known, most were either living independently/in their own tenancy (27 per cent) or living at home with parents (26 per cent). Five per cent were known to be homeless. (Table 1.24)
17. Of the young people eligible for aftercare services on 31st March 2007 who were in touch with the local authority and whose economic activity was known, 16 per cent were in education and 22 per cent were in training or employment. Five per cent were not in education, training or employment due to illness or disability, six per cent were looking after family and 50 per cent were unemployed for other reasons. (Table 1.25)
18. Twenty eight per cent of young people eligible for aftercare who had a known disability and known economic activity were in employment, education or training. This compares to 42 per cent of young people who were known to have no disability and whose economic activity was known. (Table 1.28)

The following charts are available:

- Chart 1: Children looked after per 1,000 of 0-18 population by type of placement, March 1987-2007
- Chart 2: Children looked after on 31st March 2007 by age and gender
- Chart 3: Percentage of care leavers beyond minimum school leaving age with at least one qualification at SCQF level 3 or above, 2002-03 to 2006-07
- Chart 4: Children looked after on a series of short term placements on 31st March, 2000-2007
- Chart 5: Percentage of looked after children in residential and community placements on 31st March 2007 by local authority

The following tables are available:

- Table 1.1: Children looked after at 31st March 2007 by age group and gender
- Table 1.2: Children looked after at 31st March 2007 by ethnic group
- Table 1.3: Children looked after at 31st March 2007 by disability status
- Table 1.4: Children looked after at 31st March 2007 by current statute and length of time under current statute
- Table 1.5: Children looked after as at 31st March 2007 under a Parental Responsibility Order, Freed for Adoption or under a Permanency order, by age group
- Table 1.6: Children looked after as at 31st March 2007 under a Parental Responsibility Order, Freed for Adoption or under a Permanency order, by ethnic group
- Table 1.7: Children looked after as at 31st March 2007 under a Parental Responsibility Order, Freed for Adoption or under a Permanency order, by disability status
- Table 1.8: Children looked after on a Parental Responsibility Order, Freed for Adoption or under a Permanency Order at 31st March 2007 - Stability of placements since put on statute
- Table 1.9: Children looked after at 31st March 2007 by type of accommodation
- Table 1.10: Children looked after away from home at 31st March 2007 - Stability of placements of all looked after children
- Table 1.11: Children looked after at 31st March 2007 with and without a current care plan
- Table 1.12: Children starting to be looked after during 2006-07 by age group and gender
- Table 1.13: Children starting to be looked after during 2006-07 by ethnic origin
- Table 1.14: Children starting to be looked after during 2006-07 by disability status
- Table 1.15: Children starting to be looked after during 2006-07 by statutory reason for being looked after
- Table 1.16: Children ceasing to be looked after during 2006-07 by age group and gender
- Table 1.17: Children ceasing to be looked after during 2006-07 by destination on discharge and age
- Table 1.18: Children ceasing to be looked after during 2006-07 by last statutory reason for being looked after
- Table 1.19: Children ceasing to be looked after during 2006-07 by disability status
- Table 1.20: Children ceasing to be looked after during 2006-07 by age group and length of time looked after

- Table 1.21: Academic attainment of young people aged 16 or over who ceased to be looked after during 2006-07
- Table 1.22: Young people ceasing to be looked after during 2006-07 who were beyond minimum school-leaving age on date they ceased to be looked after - by age group and type of accommodation for last care placement
- Table 1.23: Young people ceasing to be looked after during 2006-07 who were beyond minimum school-leaving age on date they ceased to be looked after - with a pathway plan, and with a nominated pathway co-ordinator
- Table 1.24: Young people eligible for aftercare services on 31st March 2007, by age and type of accommodation
- Table 1.25: Young people eligible for aftercare services on 31st March 2007, by age and economic activity
- Table 1.26: Young people eligible for aftercare services on 31st March 2007, by gender and economic activity
- Table 1.27: Young people eligible for aftercare services on 31st March 2007, by ethnic group and economic activity
- Table 1.28: Young people eligible for aftercare services on 31st March 2007, by disability status and economic activity
- Table 1.29: Young people eligible for aftercare services - episodes of homelessness
- Table 1.30: All children with a current series of short term placements at 31st March 2007 by age group and gender
- Table 1.31: All children with a current series of short term placements at 31st March 2007 by type of placement
- Table 2.1: Number of children looked after and number of children starting to be looked after 2000-2007 by age and gender
- Table 2.2: Number of children looked after and number of children starting to be looked after 2000-2007 by statutory reason for being looked after
- Table 2.3: Number of children looked after 2000-2007 by type of accommodation
- Table 2.4: Number of children looked after 2000-2007 by ethnic origin
- Table 2.5: Number of children looked after 2000-2007 by disability status
- Table 2.6: Number of children ceasing to be looked after, by destination and age, 2000-2007
- Table 2.7: Number of children ceasing to be looked after, by length of time looked after and age, 2000-2007
- Table 2.8: Number of children looked after in a planned series of short-term placements, by gender and age 2000-2007
- Table 2.9: Number of children looked after by accommodation, 1971-2007
- Table 3.1: Children starting and ceasing to be looked after, by local authority, 2006-07
- Table 3.2: Characteristics of children looked after by local authority, 31st March 2007
- Table 3.3: Number of children looked after, by local authority, accommodation type and characteristics of care away from home, 31st March 2007
- Table 3.4: Number of care leavers beyond minimum school leaving age with at least one qualification at SCQF level 3 or above, 2006-07
- Table 3.5: Number of care leavers beyond minimum school leaving age with qualifications in maths and English, 2006-07

Table 3.6: Percentage of care leavers beyond minimum school leaving age with a pathway plan and a pathway co-ordinator, 2006-07

Table 3.7: Young people entitled to aftercare, percentage in touch with social services and percentage in employment, education or training, 2006-07

BACKGROUND NOTES

- 1 The survey forms and guidance notes for data presented in this publication, and previous years' publications, can be seen at www.scotland.gov.uk/childrenstats.
- 2 Although all local authorities supplied data, some were unable to provide information for every table. The larger omissions are listed below:
 - Eilean Siar did not provide data for Tables 1.21 to 1.31 and North Lanarkshire did not provide data for Tables 1.24 to 1.29. Data from 2005-06 have been used as a substitute, and figures in these tables should therefore be regarded as estimates.
 - South Lanarkshire did not provide data for tables 1.4, 1.15, 1.17 and 1.18. Figures for these tables have been recorded as "unknown" based on the totals in other tables.
 - In Tables 1.24 to 1.29 Scottish Borders included only those children receiving (rather than all those eligible for) aftercare, and in Tables 1.26 to 1.29 West Lothian did not include 19-21 year olds. No corrections have been made for these local authorities, and figures in these tables should therefore be regarded as estimates.

In addition, there were a few minor omissions by other local authorities, which are footnoted in the relevant tables. In most cases, figures have been recorded as "unknown" based on totals in other tables.

- 3 Figures for 2005-06 have been revised to include data that a few local authorities did not provide in time for the 2005-06 publication. However, the resulting changes are small.
- 4 Tables 1.4, 1.15, 1.18 and 2.2 show numbers of children looked after under 'other' statute. Examples of 'other' include external housing support, English statutes, and the following sections from the Children's (Scotland) Act: 38(a)(1); 29; 33; 56(4)(b); 70 (3)(b); 66(1); 22.
- 5 Tables 1.9, 1.22 and 2.3 show number of children looked after by accommodation. 'Other community' includes supported accommodation/semi-independent living, emergency accommodation, link carers, respite at friends/relations, own tenancy/independent living, childminder, ex-foster carers, unknown, with in-laws, with partner, supported lodgings, hostel, supported carer placements and 'share the care' placements.
- 6 Tables 1.17 and 2.6 show number of children by destination on discharge. Examples of 'other' include unknown, prison, foster carers, secure accommodation, bed and breakfast, residential care home.

- 7 Tables 1.24-1.29 and 3.7 show children eligible for aftercare services. For details of young people's eligibility for aftercare, see regulations and guidance at <http://www.scotland.gov.uk/Publications/2004/03/19113/34719> .
- 8 This is a National Statistics publication. National Statistics are produced to high professional standards set out in the National Statistics Code of Practice. They undergo regular quality assurance reviews to ensure that they meet customer needs. They are produced free from any political interference.
- 9 Public enquiries (**non-media**) about the information contained in this Publication Notice should be addressed to Rosie Telford at:

The Scottish Government,
Analytical Services Unit (Children, Young People and Social Care)
Mail Point 26, 1B South,
Victoria Quay,
Edinburgh EH6 6QQ

Telephone: 0131 244 0314

e-mail: children.statistics@scotland.gsi.gov.uk

- 10 **Media** enquiries about the information in this Statistics Publication Notice should be addressed to Brendan Rooney on 0131 244 2960.

Chart 1: Children looked after per 1,000 of 0-18 population by type of placement, March 1987-2007

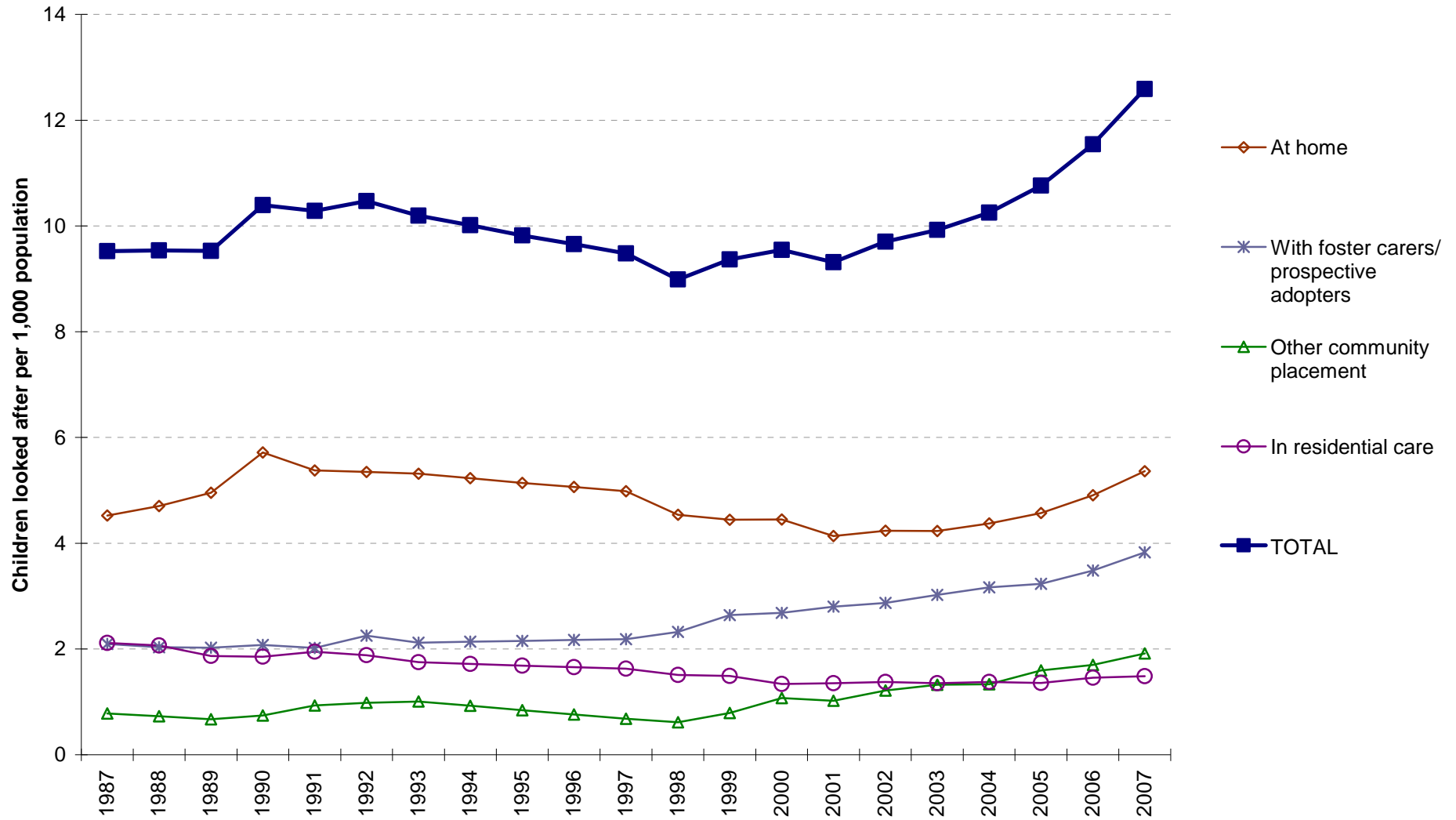


Chart 2: Children looked after on 31st March 2007 by age and gender

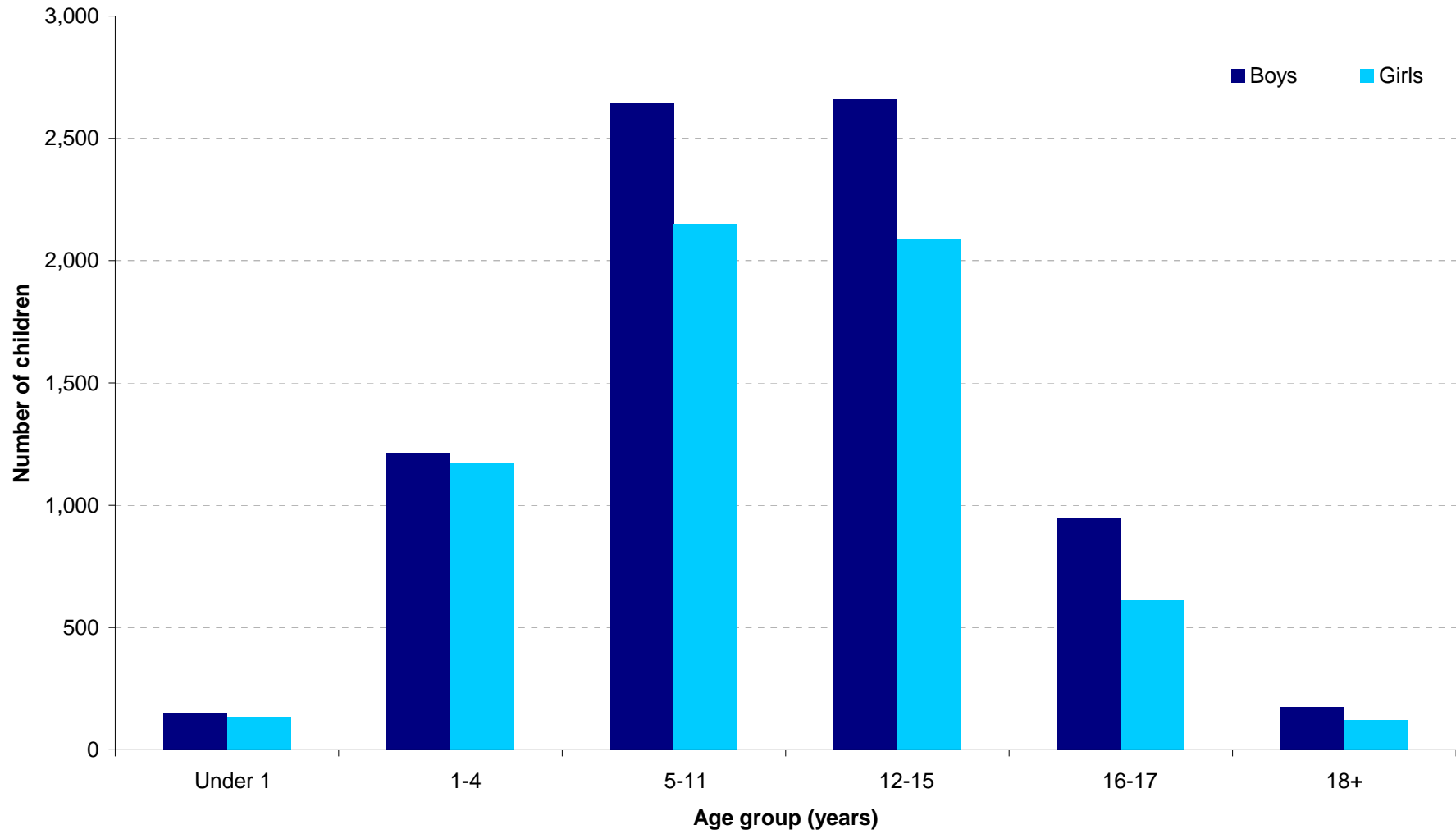


Chart 3: Percentage of care leavers beyond minimum school leaving age with at least one qualification at SCQF level 3 or above, 2002-03 to 2006-07

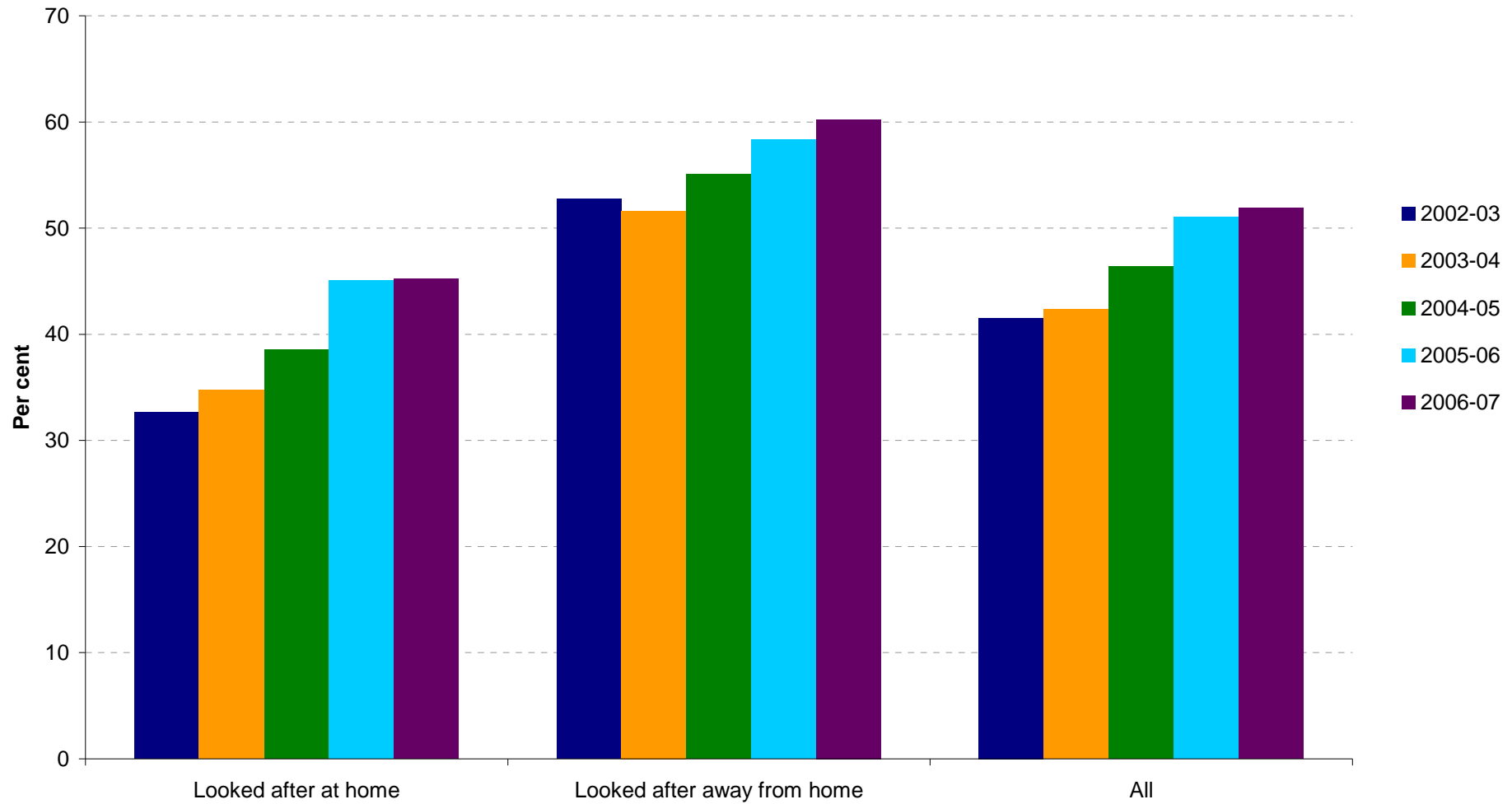


Chart 4: Children looked after on a series of short term placements on 31st March, 2000-2007

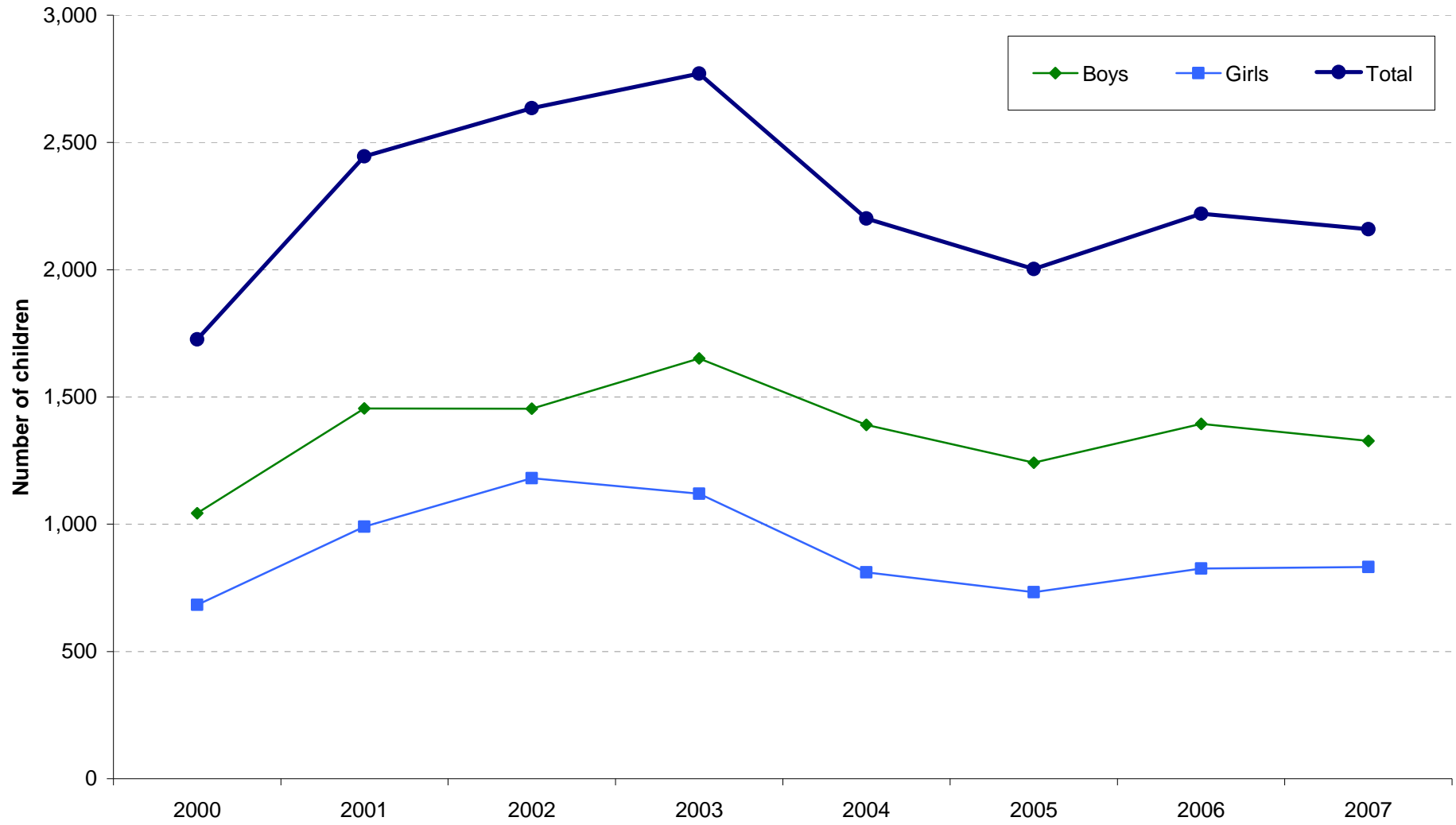


Chart 5: Percentage of looked after children in residential and community placements on 31st March 2007 by local authority

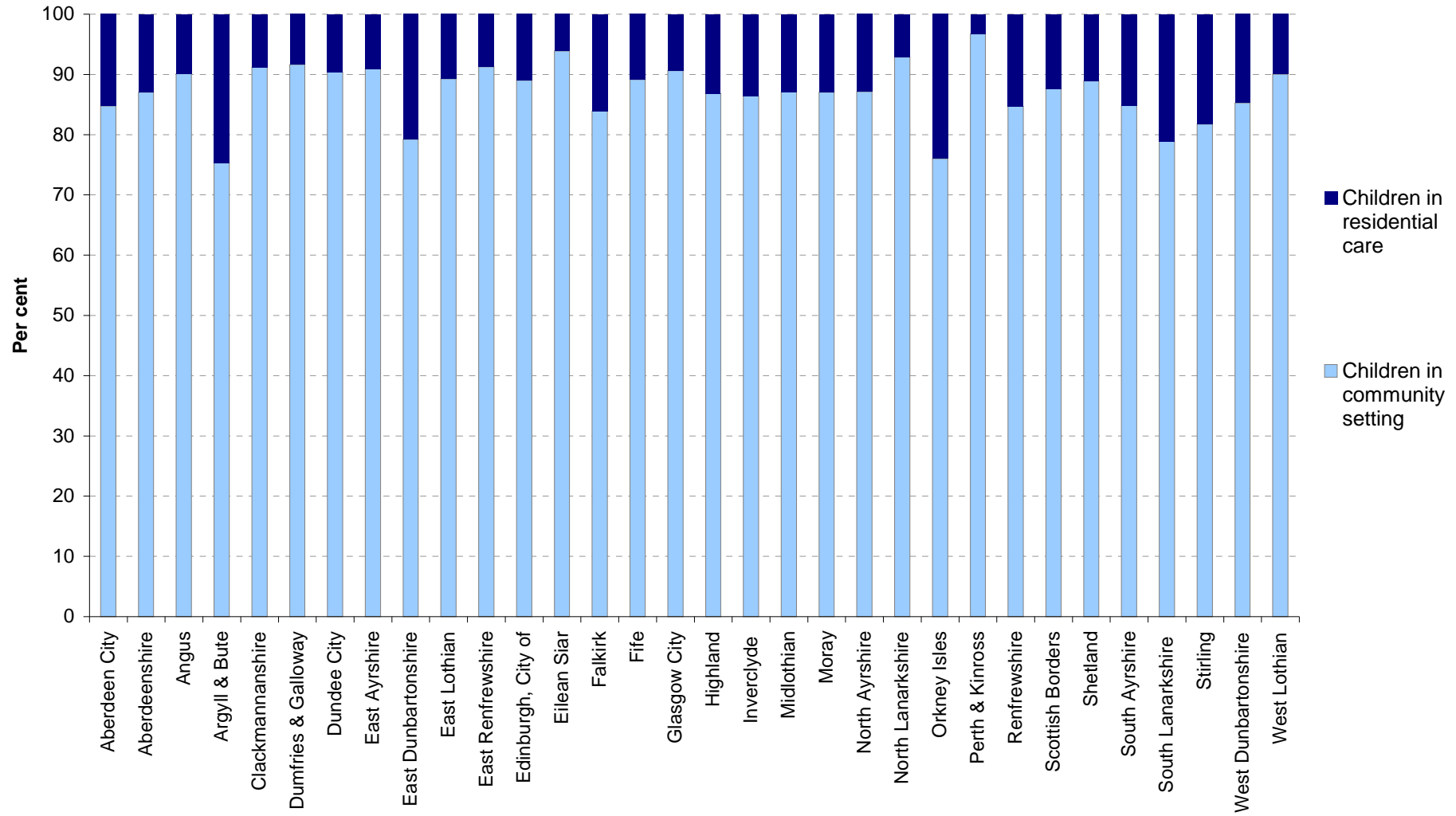


Table 1.1: Children looked after at 31st March 2007 by age group and gender

	Age at 31st March 2007							Total
	Under 1	1-4	5-11	12-15	16-17	18	19-21	
Boys	150	1,211	2,645	2,659	948	102	72	7,787
Girls	134	1,171	2,149	2,087	610	63	59	6,273
Total	284	2,382	4,794	4,746	1,558	165	131	14,060

Table 1.2: Children looked after at 31st March 2007 by ethnic group

Ethnic Group	
White	11,795
Mixed Ethnicity	137
Asian, Asian Scottish or Asian British	74
Black, Black Scottish or Black British	48
Other Ethnic Background	44
Not disclosed	266
Not known	1,696
Total looked after children	14,060

Table 1.3: Children looked after at 31st March 2007 by disability status

Main Disability	
Specific learning difficulties	53
Mental Health problem	26
Autistic spectrum disorder	86
Hearing impairment	28
Language and communication disorder	39
Physical or motor impairment	112
Visual impairment	26
Social, emotional and behavioural difficulties	749
Learning disability	232
Combined Sight and Hearing Loss (deafblind)	6
Other chronic illness/disability	147
Multiple disabilities	104
No disabilities	9,189
Unknown	3,263
Total looked after children	14,060

Note: Moray was not able to provide consistent figures for this table and Table 1.7 on the number of children whose disability status was unknown.

Table 1.4: Children looked after at 31st March 2007 by current statute and length of time under current statute

Statute Group	Time in statute group at 31st March 2007					Not known	Total children
	< 6 months	6 months- 1 year	< 1 year - 2 years	< 2 years - 5 years	At least 5 years		
Accommodated under Section 25	379	214	222	277	158		1,250
Parental Responsibilities Order	43	26	58	94	185	5	411
Supervision Requirement at Home	1,302	1,201	1,459	1,283	373		5,618
Supervision Requirement away from Home (excluding Residential Establishment)	785	784	908	1,356	731		4,564
Supervision Requirement away from Home (in a Residential Establishment but excluding Secure)	186	142	200	255	83		866
Supervision Requirement away from Home with a Secure Condition	29	14	12	6	8		69
Warrant	246	59	40	33	1		379
Child Protection Measure	37	28	21	15	3		104
Criminal Court Provision	12	6	5	3	2		28
Freed for Adoption	34	25	33	19	22		133
Permanence order	0	2	0	0	0		2
Permanence order with authority to place for adoption	0	1	0	0	0		1
Other	10	22	16	64	11		123
Not known						512	512
Total looked after children	3,063	2,524	2,974	3,405	1,577	517	14,060

Notes: South Lanarkshire did not provide information. The total numbers of looked after children in this local authority in 2006-07 have been included in the "not known" column, with the number under a Parental Responsibilities Order identified from Table 1.5.

Table 1.5: Children looked after as at 31st March 2007 under a Parental Responsibility Order, Freed for Adoption or under a Permanency order, by age group

Statute Group	Age group					Not known	Total
	Under 5	5-11	12-15	16-17	18-21		
Parental Responsibilities Order	4	133	156	77	41	0	411
Freed for Adoption	52	51	14	5	0	11	133
Permanence order	1	1	0	0	0	0	2
Permanence order with authority to place for adoption	0	1	0	0	0	0	1
Total	57	186	170	82	41	11	547

Note: Aberdeen City was not able to provide information for all children in Table 1.4. The number of children missing has been included as "Not known".

Table 1.6: Children looked after as at 31st March 2007 under a Parental Responsibility Order, Freed for Adoption or under a Permanency order, by ethnic group

Statute Group	Ethnicity						Not known	Total
	White	Mixed Ethnicity	Asian, Asian Scottish or Asian British	Black, Black Scottish or Black British	Other Ethnic Background	Not disclosed		
Parental Responsibilities Order	390	8	0	0	*	*	9	411
Freed for Adoption	*	0	0	0	0	*	33	133
Permanence order	*	0	0	0	0	*	0	2
Permanence order with authority to place for adoption	0	0	0	0	0	0	0	1
Total	491	8	0	0	*	*	43	547

Notes: Aberdeen City was not able to provide information for all children in Table 1.4. The number of children missing has been included in "Not known".

Cells containing * represent numbers that are suppressed to maintain confidentiality.

Table 1.7: Children looked after as at 31st March 2007 under a Parental Responsibility Order, Freed for Adoption or under a Permanency order, by disability status

Statute Group	Disability			Total
	Disability	No disability	Not known	
Parental Responsibilities Order	98	260	53	411
Freed for Adoption	*	*	39	133
Permanence order	*	*	0	2
Permanence order with authority to place for adoption	*	*	0	1
Total	103	352	92	547

Notes: Aberdeen City was not able to provide information for all children in Table 1.4. The number of children missing has been included in "Not known".

Moray was not able to provide consistent figures for this table and Table 1.3 on the number of children whose disability status was unknown.

Cells containing * represent numbers that are suppressed to maintain confidentiality.

Table 1.8: Children looked after on a Parental Responsibility Order, Freed for Adoption or under a Permanency Order at 31st March 2007 - Stability of placements since put on statute

Statute Group	Number of placements away from home during current episode of being looked after					Total
	1 Placement	2 Placements	3-5 Placements	6 or more Placements	Not known	
Parental Responsibilities Order	168	75	121	47		411
Freed for Adoption	41	42	31	8	11	133
Permanence order	0	2	0	0		2
Permanence order with authority to place for adoption	0	1	0	0		1
Total	209	120	152	55	11	547

Notes: Aberdeen City was not able to provide information for all children in Table 1.4. The number of children missing has been included as "Not known".

If a child is still in his/her first placement since moving from home, this counts as 1 placement.

Placements that are part of a series of planned short term/respite placements have not been counted.

Table 1.9: Children looked after at 31st March 2007 by type of accommodation

Type of accommodation	Age Group					Total
	Under 5	5-11	12-15	16-17	18-21	
In the community:-						
At home with parents	944	1,986	2,256	692	108	5,986
With friends/relatives	567	935	468	103	21	2,094
With foster carers provided by LA	959	1,424	904	267	75	3,629
With foster carers purchased by LA	72	190	123	33	8	426
With prospective adopters	117	93	7	2	1	220
In other community	0	0	0	34	10	44
Residential Accommodation:-						
In local authority home	3	66	433	222	32	756
In voluntary home	2	17	56	29	8	112
In residential school	0	75	406	118	29	628
In secure accommodation	0	0	68	44	1	113
Crisis care	2	8	25	14	3	52
Total looked after children	2,666	4,794	4,746	1,558	296	14,060

Notes: For those children on mixed placements (for example, a child attending a residential school and living with foster carers during the weekend) the child has been entered under the dominant placement, i.e. the place where the child spends the most time.

West Lothian did not provide a breakdown for foster carers provided/purchased by the local authority. All children looked after by foster carers have been entered in the former of these categories.

Table 1.10: Children looked after away from home at 31st March 2007 - Stability of placements of all looked after children

Length of time child looked after at 31st March 2007	Number of placements away from home during current episode of being looked after					Total
	1 Placement	2 Placements	3-5 Placements	6 or more Placements	Not known	
Under 6 weeks	228	35	8	2		273
6 weeks to under 6 months	605	158	67	6		836
6 months to under 1 year	616	216	138	17		987
1 year to under 2 years	755	387	286	51		1,479
2 years to under 5 years	924	683	633	219		2,459
5 or more years	543	395	614	302		1,854
Not known					186	186
Total	3,671	1,874	1,746	597	186	8,074

Notes: If a child is still in his/her first placement since moving from home, this counts as 1 placement.

Aberdeen City did not provide complete information for this table. The looked after children in this local authority for whom information was not provided are included as "not known".

Table 1.11: Children looked after at 31st March 2007 with and without a current care plan

	Looked after at home	Looked after away from home	Total
With a current care plan	4,228	6,421	10,649
Without a current care plan	1,121	649	1,770
Not known	637	1,004	1,641
Total	5,986	8,074	14,060

Note: Argyll & Bute, City of Edinburgh and Scottish Borders did not provide information. The total numbers of looked after children in these authorities have been included as "not known".

Table 1.12: Children starting to be looked after during 2006-07 by age group and gender

	Age on starting to be looked after						Total
	Under 1	1-4	5-11	12-15	16-17	18-21	
Boys	206	611	894	1,088	202	11	3,012
Girls	207	571	690	849	127	13	2,457
Total	413	1,182	1,584	1,937	329	24	5,469

Note: Figures include all episodes of starting to be looked after (i.e. a child may be counted more than once).

Table 1.13: Children starting to be looked after during 2006-07 by ethnic origin

Ethnic Group	
White	4,226
Mixed Ethnicity	71
Asian, Asian Scottish or Asian British	23
Black, Black Scottish or Black British	32
Other Ethnic Background	24
Not disclosed	165
Not known	928
Total	5,469

Note: Figures include all episodes of starting to be looked after (i.e. a child may be counted more than once).

Table 1.14: Children starting to be looked after during 2006-07 by disability status

Main Disability	
Specific learning difficulties	25
Mental Health problem	14
Autistic spectrum disorder	27
Hearing impairment	8
Language and communication disorder	*
Physical or motor impairment	64
Visual impairment	*
Social, emotional and behavioural difficulties	214
Learning disability	54
Combined Sight and Hearing Loss (deafblind)	0
Other chronic illness/disability	13
Multiple disabilities	48
No disabilities	3,129
Not known	1,866
Total	5,469

Notes: Figures include all episodes of starting to be looked after (i.e. a child may be counted more than once).

Cells containing * represent numbers that are suppressed to maintain confidentiality.

Table 1.15: Children starting to be looked after during 2006-07 by statutory reason for being looked after

Statute group	
Accommodated under section 25	950
Parental Responsibilities Order	4
Supervision Requirement at Home	2,452
Supervision Requirement away from Home (excluding Residential Establishment)	735
Supervision Requirement away from Home (in a Residential Establishment but excluding Secure)	177
Supervision Requirement away from Home with a Secure Condition	23
Warrant	450
Child Protection Measure	203
Criminal Court Provision	11
Freed for Adoption	19
Permanence order	0
Permanence order with authority to place for adoption	0
Other	254
Not known	191
Total	5,469

Notes: Figures include all episodes of starting to be looked after (i.e. a child may be counted more than once).

South Lanarkshire did not provide information. The total number of children starting to be looked after in 2006-07 in this local authority has been included as "not known".

Table 1.16: Children ceasing to be looked after during 2006-07 by age group and gender

Gender	Ages of children at time of ceasing to be looked after							Total
	Under 1	1-4	5-11	12-15	16-17	18	19-21	
Boys	48	319	537	499	752	92	23	2,270
Girls	49	292	492	425	538	56	22	1,874
Total	97	611	1,029	924	1,290	148	45	4,144

Note: Figures include all episodes of ceasing to be looked after (i.e. a child may be counted more than once).

Table 1.17: Children ceasing to be looked after during 2006-07 by destination on discharge and age

Destination	Ages of children at time of ceasing to be looked after					Total
	Under 5	5-11	12-15	16-17	18-21	
Home with parents	339	578	572	627	39	2,155
Friends / relatives	59	98	90	108	7	362
Former foster carers	1	2	1	9	4	17
Adopted	73	53	4	3	0	133
Transferred to another LA	7	10	4	3	0	24
Supported accommodation / semi-independent living	0	0	0	115	36	151
Own tenancy / independent living	0	0	0	41	14	55
Homeless	0	0	0	7	3	10
Other	86	95	119	157	41	498
Not known	143	193	134	220	49	739
Total	708	1,029	924	1,290	193	4,144

Notes: Figures include all episodes of ceasing to be looked after (i.e. a child may be counted more than once).

City of Edinburgh, Midlothian and South Lanarkshire did not provide this information. The total numbers of children ceasing to be looked after in 2006-07 in these authorities have been included as "not known".

Table 1.18: Children ceasing to be looked after during 2006-07 by last statutory reason for being looked after

Statute group	
Accommodated under section 25	674
Parental Responsibilities Order	37
Supervision Requirement at Home	2,033
Supervision Requirement away from Home (excluding Residential Establishment)	736
Supervision Requirement away from Home (in a Residential Establishment but excluding Secure)	225
Supervision Requirement away from Home with a Secure Condition	28
Warrant	88
Child Protection Measure	38
Criminal Court Provision	13
Freed for Adoption	44
Permanence order	2
Permanence order with authority to place for adoption	2
Other	64
Unknown	160
Total	4,144

Notes: Figures include all episodes of ceasing to be looked after (i.e. a child may be counted more than once).

South Lanarkshire did not provide this information. The total number of children ceasing to be looked after in 2006-07 in this authority has been included as "not known".

Table 1.19: Children ceasing to be looked after during 2006-07 by disability status

Main Disability	
Specific learning difficulties	23
Mental Health problem	19
Autistic spectrum disorder	19
Hearing impairment	6
Language and communication disorder	*
Physical or motor impairment	27
Visual impairment	*
Social, emotional and behavioural difficulties	172
Learning disability	52
Combined Sight and Hearing Loss (deafblind)	*
Other chronic illness/disability	33
Multiple disabilities	11
No disabilities	2,788
Unknown	986
Total looked after children	4,144

Notes: Figures include all episodes of ceasing to be looked after (i.e. a child may be counted more than once).

East Renfrewshire did not provide this information. The total number of children ceasing to be looked after in 2006-07 in this authority has been included as "not known".

Cells containing * represent numbers that are suppressed to maintain confidentiality.

Table 1.20: Children ceasing to be looked after during 2006-07 by age group and length of time looked after

Length of time looked after	Ages of children at time of ceasing to be looked after						Total
	Under 1	1-4	5-11	12-15	16-17	18-21	
Under 6 weeks	55	87	105	130	20	1	398
6 weeks to under 6 months	29	80	112	146	97	7	471
6 months to under 1 year	13	136	185	204	253	14	805
1 year to under 3 years	0	254	351	304	564	42	1,515
3 years to under 5 years	0	54	190	82	187	56	569
5 years to under 10 years	0	0	85	54	148	49	336
10 years and over	0	0	1	4	21	24	50
Total	97	611	1,029	924	1,290	193	4,144

Note: Figures include all episodes of ceasing to be looked after (i.e. a child may be counted more than once).

Table 1.21: Academic attainment of young people aged 16 or over who ceased to be looked after during 2006-07

Qualifications gained	Number of young people aged 16 or over ceasing to be looked after...			Percentage of young people aged 16 or over ceasing to be looked after...		
	At home	Away from home	Total	At home	Away from home	Total
No qualifications at SCQF Level 3 or higher	390	227	617	55	40	48
At least one subject at SCQF Level 3 or higher	322	344	666	45	60	52
Both English and Maths at SCQF Level 3 or higher	182	255	437	26	45	34
At least one subject at SCQF Level 6 or higher	14	23	37	2	4	3
Total care leavers beyond minimum school leaving age	712	571	1283	100	100	100

Note: Eilean Siar did not provide information. 2005-06 figures for this authority have been incorporated into this table. The numbers of young people are therefore best understood as estimates.

Table 1.22: Young people ceasing to be looked after during 2006-07 who were beyond minimum school-leaving age on date they ceased to be looked after - by age group and type of accommodation for last care placement

Final accommodation type	Age at time of ceasing to be looked after					Total
	15	16	17	18	19-21	
In the community:-						
At home with parents	70	440	157	30	6	703
With friends/relatives	5	70	23	*	*	103
With foster carers provided by LA	11	79	42	29	7	168
With foster carers purchased by LA	0	*	5	*	*	10
With prospective adopters	0	*	0	*	0	5
In other community	*	12	14	7	*	35
Residential Accommodation:-						
In local authority home	*	73	45	18	*	144
In voluntary home	0	6	*	*	*	12
In residential school	15	67	8	*	*	99
In secure accommodation	*	17	11	*	0	30
Crisis care	*	21	*	0	0	23
Total	110	792	311	99	20	1,332

Notes: Figures include all episodes of ceasing to be looked after (i.e. a child may be counted more than once).

Notes: Eilean Siar did not provide information. 2005-06 figures for this authority have been incorporated into this table. The numbers of young people are therefore best understood as estimates.

West Lothian did not provide a breakdown for foster carers provided/purchased by the local authority. All children looked after by foster carers have been entered in the former of these categories.

Cells containing * represent numbers that are suppressed to maintain confidentiality.

Table 1.23: Young people ceasing to be looked after during 2006-07 who were beyond minimum school-leaving age on date they ceased to be looked after - with a pathway plan, and with a nominated pathway co-ordinator

	Number	Percentage
With a pathway plan on 31 March 2007	660	50
With a nominated pathway co-ordinator on 31 March 2007	733	55

Note: Eilean Siar did not provide information. 2005-06 figures for this authority have been incorporated into this table. The numbers of young people are therefore best understood as estimates.

Table 1.24: Young people eligible for aftercare services on 31st March 2007, by age and type of accommodation

Accommodation arrangements on 31 March 2007	Age on 31 March 2007				Total	Percentage of all young people eligible for aftercare	Percentage of young people with known accommodation
	15-16	17	18	19-21			
Home with parents	202	152	169	130	653	19	26
Friends / relatives	37	82	67	51	237	7	9
Former foster carers	30	14	21	18	83	2	3
Supported accommodation / semi-independent living	75	88	73	88	324	9	13
Own tenancy / independent living	34	130	198	319	681	20	27
Homeless	18	25	44	51	138	4	5
Other	116	92	96	137	441	13	17
Don't know	95	134	158	102	489	14	
No longer in touch	61	82	91	136	370	11	
Total	668	799	917	1,032	3,416	100	100

Notes: Eilean Siar and North Lanarkshire did not provide this information. 2005-06 figures for these authorities have been incorporated into this table. In addition, Scottish Borders included only those young people receiving aftercare, rather than all young people that were eligible. The numbers of young people are therefore best understood as estimates.

The "no longer in touch" category does not completely match that in Tables 1.25 to 1.28 because of inconsistencies in reporting.

Table 1.25: Young people eligible for aftercare services on 31st March 2007, by age and economic activity

Economic activity on 31 March 2007	Age on 31 March 2007				Total	Percentage of all young people eligible for aftercare	Percentage of young people with known economic activity
	15-16	17	18	19-21			
In education, training or employment							
In higher education	17	21	31	42	111	3	5
In education other than HE	119	53	44	31	247	7	11
In training or employment	82	109	152	154	497	15	22
Not in education, training or employment							
- due to short term illness	0	*	*	26	34	1	2
- due to long term illness or disability	2	*	*	55	88	3	4
- due to looking after family	4	39	44	57	144	4	6
- due to other circumstances	178	337	308	284	1,107	32	50
Don't know economic activity	203	134	217	240	794	23	
No longer in touch	63	88	100	143	394	12	
Total	668	799	917	1,032	3,416	100	100
Percentage in employment, education or training							
<i>As percentage of all young people eligible for aftercare</i>	33	23	25	22	25		
<i>As percentage of young people with known economic activity</i>	54	32	38	35	38		

Notes: Eilean Siar and North Lanarkshire did not provide this information. 2005-06 figures for these authorities have been incorporated into this table. In addition, Scottish Borders included only those young people receiving aftercare, rather than all young people that were eligible. The numbers of young people are therefore best understood as estimates.

The "no longer in touch" category does not completely match that in Tables 1.24 because of inconsistencies in reporting.

Cells containing * represent numbers that are suppressed to maintain confidentiality.

Table 1.26: Young people eligible for aftercare services on 31st March 2007, by gender and economic activity

Economic activity on 31st March 2007	Gender			Total
	Male	Female	Not known	
In education, training or employment				
In higher education	52	59	0	111
In education other than HE	118	129	0	247
In training or employment	255	228	14	497
Not in education, training or employment				
- due to short term illness	18	16	0	34
- due to long term illness or disability	42	39	7	88
- due to looking after family	28	116	0	144
- due to other circumstances	659	442	6	1,107
Don't know economic activity	404	324	66	794
No longer in touch	230	164	0	394
Total	1,806	1,517	93	3,416
Percentage in employment, education or training				
<i>As percentage of all young people eligible for aftercare</i>	24	27	15	25
<i>As percentage of young people with known economic activity</i>	36	40	52	38

Notes: Eilean Siar and North Lanarkshire did not provide this information. 2005-06 figures for these authorities have been incorporated into this table. In addition, Scottish Borders included only those young people receiving aftercare, rather than all young people that were eligible. The numbers of young people are therefore best understood as estimates.

The "no longer in touch" category does not completely match that in Tables 1.24 because of inconsistencies in reporting.

West Lothian did not include figures for 19-21 year olds in time for inclusion. The numbers missing have been calculated from Table 1.26 and included in the "not known" column.

Table 1.27: Young people eligible for aftercare services on 31st March 2007, by ethnic group and economic activity

Economic activity on 31st March 2007	Ethnicity						Total
	White	Mixed Ethnicity	Asian, Asian Scottish or Asian British	Black, Black Scottish or Black British	Other Ethnic Background	Not known / not disclosed	
In education, training or employment							
In higher education	97	*	*	5	*	1	111
In education other than HE	221	*	*	5	*	11	247
In training or employment	462	*	*	5	*	23	497
Not in education, training or employment							
- due to short term illness	34	0	0	0	0	0	34
- due to long term illness or disability	78	0	*	*	0	9	88
- due to looking after family	143	0	0	0	0	1	144
- due to other circumstances	1,058	10	*	*	6	30	1,107
Don't know economic activity	682	*	*	*	*	103	794
No longer in touch	386	*	*	*	*	4	394
Total	3,161	21	14	22	16	182	3,416
Percentage in employment, education or training							
<i>As percentage of all young people eligible for aftercare</i>	25	38	71	68	44	19	25
<i>As percentage of young people with known economic activity</i>	37	44	83	88	54	47	38

Notes: Eilean Siar and North Lanarkshire did not provide this information. 2005-06 figures for these authorities have been incorporated into this table. In addition, Scottish Borders included only those young people receiving aftercare, rather than all young people that were eligible. The numbers of young people are therefore best understood as estimates.

The "no longer in touch" category does not completely match that in Tables 1.24 because of inconsistencies in reporting.

West Lothian did not include figures for 19-21 year olds in time for inclusion. The numbers missing have been calculated from Table 1.26 and included in the "not known" column.

Cells containing * represent numbers that are suppressed to maintain confidentiality.

Table 1.28: Young people eligible for aftercare services on 31st March 2007, by disability status and economic activity

Economic activity on 31st March 2007	Disability			Total
	Disability	No disability	Unknown	
In education, training or employment				
In higher education	11	75	25	111
In education other than HE	35	136	76	247
In training or employment	61	320	116	497
Not in education, training or employment				
- due to short term illness	8	17	9	34
- due to long term illness or disability	45	20	23	88
- due to looking after family	21	91	32	144
- due to other circumstances	199	592	316	1,107
Don't know economic activity	46	328	420	794
No longer in touch	25	134	235	394
Total	451	1,713	1,252	3,416
Percentage in employment, education or training				
<i>As percentage of all young people eligible for aftercare</i>	24	31	17	25
<i>As percentage of young people with known economic activity</i>	28	42	36	38

Notes: East Renfrewshire, Eilean Siar, Edinburgh, Highland and North Lanarkshire did not provide this information. 2005-06 figures for Eilean Siar and North Lanarkshire have been incorporated into this table. Figures for East Renfrewshire, Edinburgh and Highland have been included as "not known", according to totals in Table 1.26. In addition, Scottish Borders included only those young people receiving aftercare, rather than all young people that were eligible. The numbers of young people are therefore best understood as estimates.

West Lothian did not include figures for 19-21 year olds in time for inclusion. The numbers missing have been calculated from Table 1.26 and included in the "not known" column.

The "no longer in touch" category does not completely match that in Tables 1.24 because of inconsistencies in reporting.

Table 1.29: Young people eligible for aftercare services - episodes of homelessness

Number of episodes of homelessness	Percentage of young people leaving care between...				Total
	April 2003- March 2004	April 2004- March 2005	April 2005- March 2006	April 2006- March 2007	
Never homeless	34	40	45	49	44
One or more spell of homelessness	37	21	20	13	19
Don't know	13	24	21	26	22
No longer in touch	16	15	15	12	14
Total	100	100	100	100	100

Notes: The total number of young people included in this table does not match the totals in Tables 1.24 to 1.28 because 14 local authorities were unable to provide complete information and because some young people eligible for aftercare left care prior to April 2003.

Eilean Siar and North Lanarkshire did not provide this information. 2005-06 figures for these authorities have been incorporated into this table. In addition, Scottish Borders included only those young people receiving aftercare, rather than all young people that were eligible, and West Lothian did not include figures for 19-21 year olds in time for inclusion. The percentages of young people are therefore best understood as estimates.

Table 1.30: All children with a current series of short term placements at 31st March 2007 by age group and gender

Age at 31st March	Age-group					Total
	Under 1	1-4	5-11	12-15	16-17	
Boys	9	114	540	458	206	1,327
Girls	13	92	330	285	112	832
Total	22	206	870	743	318	2,159

Notes: Table includes all children who had a current plan, even if they were not actually accommodated on 31st March.

Eilean Siar did not provide this information. There were no children with a current series of short term placements in this local authority on 31st March 2006, so it has been assumed that there were also no children in this group in 2007.

Table 1.31: All children with a current series of short term placements at 31st March 2007 by type of placement

Type of placement	Number of children
Residential establishment	1,045
Hospital	8
Foster placement	618
Other placement	488
Total	2,159

Notes: Table includes all children who had a current plan, even if they were not actually accommodated on 31st March.

Eilean Siar did not provide this information. There were no children with a current series of short term placements in this local authority on 31st March 2006, so it has been assumed that there were also no children in this group in 2007.

Table 2.1: Number of children looked after and number of children starting to be looked after 2000-2007 by age and gender

Age/gender	Children looked after on 31st March....								Percentage of 2007 total	Children looked after as a percentage of the population
	2000	2001	2002	2003	2004	2005	2006	2007		
Male										
Under 1	130	101	99	104	122	141	126	150	1	0.5
1-4	956	890	957	926	975	995	1,093	1,211	9	1.1
5-11	1,997	1,968	2,081	2,144	2,192	2,269	2,451	2,645	19	1.3
12-15	2,724	2,577	2,548	2,498	2,489	2,481	2,595	2,659	19	2.0
16-17	765	756	801	811	793	849	854	948	7	1.4
18-21							107	174	1	0.5
Unknown						1	0	0	0	
Total	6,572	6,291	6,486	6,483	6,571	6,736	7,226	7,787	55	1.4
Female										
Under 1	105	92	84	77	125	106	140	134	1	0.5
1-4	729	722	811	841	873	957	1,005	1,171	8	1.1
5-11	1,572	1,554	1,701	1,771	1,873	1,987	2,044	2,149	15	1.1
12-15	1,763	1,674	1,676	1,617	1,687	1,806	1,929	2,087	15	1.7
16-17	568	564	483	599	546	592	525	610	4	1.0
18-21							113	122	1	0.4
Unknown						0	0	0	0	
Total	4,737	4,606	4,755	4,905	5,104	5,448	5,756	6,273	45	1.2
All people										
Under 1	235	193	183	181	247	247	266	284	2	0.5
1-4	1,685	1,612	1,768	1,768	1,848	1,952	2,098	2,382	17	1.1
5-11	3,569	3,522	3,781	3,914	4,065	4,257	4,495	4,794	34	1.2
12-15	4,487	4,251	4,224	4,115	4,176	4,287	4,524	4,746	34	1.9
16-17	1,333	1,319	1,284	1,410	1,339	1,441	1,379	1,558	11	1.2
18-21							220	296	2	0.1
Unknown						1	0	0	0	
Total	11,309	10,897	11,241	11,388	11,675	12,185	12,982	14,060	100	1.3

Age/gender	Children starting to be looked after in year ending 31st March....								Percentage of 2007 total
	2000	2001	2002	2003	2004	2005	2006	2007	
Male									
Under 1	115	127	139	146	179	218	220	206	4
1-4	497	444	516	457	483	433	523	611	11
5-11	805	737	702	783	732	666	748	894	16
12-15	1,177	1,220	1,070	1,021	949	949	986	1,088	20
16-17	156	192	210	163	142	100	140	202	4
18-21							9	11	0
unknown						1	0	0	0
Total	2,750	2,720	2,637	2,570	2,485	2,367	2,626	3,012	55
Female									
Under 1	122	107	120	123	187	182	195	207	4
1-4	398	377	427	393	417	424	470	571	10
5-11	585	578	583	568	626	589	545	690	13
12-15	797	782	781	753	750	695	810	849	16
16-17	120	130	130	108	100	74	79	127	2
18-21							8	13	0
unknown						1	0	0	0
Total	2,022	1,974	2,042	1,943	2,079	1,965	2,107	2,457	45
All people									
Under 1	237	234	259	268	366	400	415	413	8
1-4	895	821	943	850	900	857	993	1,182	22
5-11	1,390	1,315	1,285	1,350	1,357	1,255	1,293	1,584	29
12-15	1,974	2,002	1,852	1,773	1,699	1,644	1,796	1,937	35
16-17	276	322	340	271	242	175	219	329	6
18-21							17	24	0
unknown						2	0	0	0
Total	4,771	4,694	4,678	4,513	4,564	4,333	4,733	5,469	100

Notes: Table excludes children who are on a planned series of short term placements.

Prior to 2007, table includes estimates wherever local authorities were not able to provide information.

Figures for 2006 are revised.

Prior to 2005 'unknowns' were allocated to a category rather than being reported as unknown. For this reason, totals do not always exactly equal the sum of their parts, due to rounding.

The number of looked after children aged 18+ was not asked for prior to 2006.

Bottom half of table records episodes of care which have begun. A child may start to be looked after more than once in a year and so may be counted more than once.

Changes between 2003-04 and 2004-05 are partly due to improved recording.

Rates per population are based on GRO(Scotland) 2006 mid-year population estimates. 18-21 is calculated as a percentage of 18 year olds. Total rates are calculated as a percentage of 0-18s.

Table 2.2: Number of children looked after and number of children starting to be looked after 2000-2007 by statutory reason for being looked after

Statute group	Children looked after on 31 March...								Percentage of 2007 total
	2000	2001	2002	2003	2004	2005	2006	2007	
Accommodated under Section 25	1,343	1,250	1,326	1,288	1,299	1,283	1,238	1,250	9
Parental Responsibilities Order	322	395	348	362	336	298	327	411	3
Supervision Requirement at Home	5,439	4,632	4,682	4,699	4,788	4,814	4,950	5,618	40
Supervision Requirement Away from Home (excluding Residential Establishment)	2,199	2,875	3,193	3,587	3,540	3,833	3,804	4,564	32
Supervision Requirement Away from Home (in a Residential Establishment but excluding Secure)	960	959	1,006	817	805	824	824	866	6
Supervision Requirement Away from Home with a Secure Condition	87	78	87	56	50	48	67	69	0
Warrant	114	149	180	210	286	257	324	379	3
Child Protection Measure	119	80	67	75	70	61	95	104	1
Criminal Court Provision	10	38	42	33	22	15	15	28	0
Freed for Adoption	50	72	80	102	89	83	70	133	1
Permanence Order								2	0
Permanence Order with Authority to Place for Adoption								1	0
Other	667	368	230	160	155	152	162	123	1
Unknown					236	517	1,106	512	4
Total	11,309	10,897	11,241	11,388	11,675	12,185	12,982	14,060	100

Statute group	Children starting to be looked after in year ending 31st March....								Percentage of 2007 total
	2000	2001	2002	2003	2004	2005	2006	2007	
Accommodated under Section 25	1183	1002	1,054	1,016	1,016	1,111	999	950	17
Parental Responsibilities Order	5	8	18	17	31	9	10	4	0
Supervision Requirement at Home	2,200	2,149	1,984	2,022	1,986	1,799	2,178	2,452	45
Supervision Requirement Away from Home (excluding Residential Establishment)	609	632	850	689	716	541	549	735	13
Supervision Requirement Away from Home (in a Residential Establishment but excluding Secure)	259	367	320	338	355	154	126	177	3
Supervision Requirement Away from Home with a Secure Condition	30	36	55	28	26	10	28	23	0
Warrant	129	165	151	176	218	227	327	450	8
Child Protection Measure	81	118	105	129	133	145	194	203	4
Criminal Court Provision	6	17	18	35	12	13	22	11	0
Freed for Adoption	41	7	6	13	14	9	5	19	0
Permanence Order								0	0
Permanence Order with Authority to Place for Adoption								0	0
Other	228	194	118	52	58	122	132	254	5
Unknown						193	163	191	3
Total	4,771	4,694	4,678	4,513	4,564	4,333	4,733	5,469	100

Notes: Table excludes children who are on a planned series of short term placements.

Prior to 2007 table includes estimates wherever local authorities were not able to provide information.

Figures for 2006 are revised.

Prior to 2007 "Permanence Order" and "Permanence Order with Authority to Place for adoption" were included in the "Other" category.

Prior to 2005 'unknowns' were allocated to a category rather than being reported as unknown. For this reason, totals do not always exactly equal the sum of their parts, due to rounding.

Table records episodes of care which have begun. A child may start to be looked after more than once in a year and so may be counted more than once here.

South Lanarkshire did not provide information for 2007. The numbers of looked after children and children starting to be looked after in this local authority in 2006-07 have been included as "unknown".

Table 2.3: Number of children looked after 2000-2007 by type of accommodation

Type of accommodation	Children looked after on 31 March...								Percentage of 2007 total
	2000	2001	2002	2003	2004	2005	2006	2007	
In the community									
At home with parents	5,270	4,842	4,909	4,851	4,982	5,179	5,517	5,986	43
With friends / relatives	1,098	980	1,303	1,445	1,426	1,671	1,731	2,094	15
With foster carers	3,058	3,084	3,170	3,288	3,461	3,493	3,731	4,055	29
With prospective adopters	123	196	158	180	147	167	184	220	2
In other community	176	215	106	73	92	136	181	44	0
Total	9,724	9,315	9,646	9,838	10,108	10,646	11,344	12,399	88
In residential accommodation									
In local authority home	669	704	717	697	721	716	737	756	5
In voluntary sector home	54	63	56	83	66	57	84	112	1
In residential school	629	684	672	640	657	618	662	628	4
In secure accommodation	90	87	93	92	80	82	78	113	1
Other residential accommodation	143	44	55	38	44	66	77	52	0
Total	1,585	1,582	1,595	1,550	1,567	1,539	1,638	1,661	12
TOTAL	11,309	10,897	11,241	11,388	11,675	12,185	12,982	14,060	100

Notes: Table excludes children who are on a planned series of short term placements.

For those children on mixed placements (for example, a child attending a residential school and living with foster carers during the weekend) the child has been entered under the dominant placement, i.e. the place where the child spends the most time.

Prior to 2007, table includes estimates wherever local authorities were not able to provide information.

Figures for 2006 are revised.

Some totals do not exactly equal the sum of their component parts due to the effects of rounding.

In 2007 "Other residential accommodation" comprises only "Crisis Care".

Table 2.4: Number of children looked after 2000-2007 by ethnic origin

Ethnicity	Children looked after on 31 March...						Percentage of 2007 total
	2002	2003	2004	2005	2006	2007	
White	11,047	11,163	11,436	10,153	10,769	11,795	84
Mixed Ethnicity	85	100	114	95	122	137	1
Black, Black Scottish or Black British	19	21	24	31	41	74	1
Asian, Asian Scottish or Asian British	47	51	43	40	49	48	0
Other Ethnic Background	44	52	57	32	30	44	0
Not disclosed/not known				1,834	1,971	1,962	14
Total	11,241	11,388	11,675	12,185	12,982	14,060	100

Notes: Table excludes children who are on a planned series of short term placements.

Prior to 2007 table includes estimates wherever local authorities were not able to provide information.

Figures for 2006 are revised.

In years 2002 - 2004 children with unreported ethnic origin were allocated to an ethnic group rather than being presented as 'unknown'. For this reason, totals may not exactly equal the sum of their parts, due to rounding.

Table 2.5: Number of children looked after 2000-2007 by disability status

	Children looked after on 31 March...								Percentage of 2007 total
	2000	2001	2002	2003	2004	2005	2006	2007	
Specific learning difficulties								53	0
Mental Health problem	23	26	19	20	24	10	15	26	0
Autistic spectrum disorder	31	51	68	46	64	66	74	86	1
Hearing impairment	13	15	20	19	24	15	22	28	0
Language and communication disorder	35	31	17	65	42	41	37	39	0
Physical or motor impairment	92	140	96	136	113	84	75	112	1
Visual impairment	18	46	17	14	28	22	20	26	0
Social, emotional and behavioural difficulties	1,167	1,150	1,262	802	1,120	874	718	749	5
Learning disability	257	302	254	268	349	265	239	232	2
Combined Sight and Hearing Loss (deafblind)								6	0
Other chronic illness/disability	122	109	133	135	121	84	76	147	1
Multiple disabilities	116	135	124	85	135	115	108	104	1
No disabilities	9,436	8,893	9,230	9,797	9,655	8,138	8,313	9,189	65
Unknown						2,471	3,285	3,263	23
Total	11,309	10,897	11,241	11,388	11,675	12,185	12,982	14,060	100

Notes: Table excludes children who are on a planned series of short term placements.

Prior to 2007, table includes estimates wherever local authorities were not able to provide information.

Figures for 2006 are revised.

In 2000 to 2004 children with unreported disability status were allocated to a group rather than being presented as 'unknown'. For this reason, some totals do not exactly equal the sum of their component parts due to the effects of rounding.

The definitions of some disabilities changed in 2007:

"Significant Learning Disability" was replaced by the two categories of "Specific Learning Difficulties" and "Learning Disability". For 2000-2006, all those in the "Significant Learning Disability" category have been included in the latter.

"Significant hearing impairment" was replaced by "Hearing impairment", which may cause a discontinuity in the "hearing impairment" category between 2006 and 2007.

"Significant Language and Communication Disorder" was replaced by "Language and Communication Disorder", which may cause a discontinuity in the "Language and Communication Disorder" category between 2006 and 2007.

"Significant Physical or Motor Impairment" was replaced by "Physical or Motor Impairment", which may cause a discontinuity in the "Physical or Motor Impairment" category between 2006 and 2007.

"Significant Visual Impairment" was replaced by "Visual Impairment", which may cause a discontinuity in the "Visual Impairment" category between 2006 and 2007.

The "Combined Sight and Hearing Loss (Deafblind)" category was added in 2007.

"Other Disability" was replaced by "Other Chronic Illness/Disability", which may cause a discontinuity in the "Other Chronic Illness/Disability" category between 2006 and 2007.

The "No Disability - but affected by disability" and "No disability - and not affected by disability" categories were combined into "No disabilities". For 2000-2006 the "No Disabilities" category uses the sum of these figures.

The full definitions of these disabilities can be found in the Guidance Notes accompanying the 2006-07 CLAS form at:

<http://www.scotland.gov.uk/Topics/Statistics/Browse/Children/GuidanceCLAS2006-07final>

Table 2.6: Number of children ceasing to be looked after, by destination and age, 2000-2007

Age	Destination after leaving care	Children ceasing to be looked after in year ending 31st March....							Percentage of 2007 totals	
		2000	2001	2002	2003	2004	2005	2006		2007
Under 5										
	Home with parents	580	398	471	431	530	293	374	339	48
	Friends / relatives	51	35	71	68	81	43	61	59	8
	Former foster carers								1	0
	Adoption	50	53	56	54	83	58	54	73	10
	Supported accommodation / own tenancy	4	2	0	1	0	3	0	0	0
	Other	122	190	115	89	38	32	90	93	13
	unknown						160	89	143	20
	Total	806	678	713	643	732	589	668	708	100
5-11										
	Home with parents	839	749	698	726	726	518	604	578	56
	Friends / relatives	61	69	84	103	106	72	91	98	10
	Former foster carers								2	0
	Adoption	35	17	30	48	72	51	52	53	5
	Supported accommodation / own tenancy	13	6	5	1	4	1	0	0	0
	Other	191	283	126	136	70	32	109	105	10
	unknown						214	130	193	19
	Total	1,140	1,124	943	1,015	979	888	986	1,029	100
12-15										
	Home with parents	877	856	983	850	869	591	624	572	62
	Friends / relatives	57	76	110	87	62	57	74	90	10
	Former foster carers								1	0
	Adoption	0	4	3	4	44	3	8	4	0
	Supported accommodation / own tenancy	23	33	10	5	21	6	13	0	0
	Other	417	424	175	156	69	41	109	123	13
	unknown						209	112	134	15
	Total	1,374	1,393	1,281	1,102	1,065	907	940	924	100
16+										
	Home with parents	642	718	770	741	776	582	592	666	45
	Friends / relatives	76	114	75	74	96	83	97	115	8
	Former foster carers								13	1
	Adoption	0	0	1	5	11	5	5	3	0
	Supported accommodation / own tenancy	159	302	208	187	188	173	189	206	14
	Other	245	410	210	267	175	95	233	211	14
	unknown						242	175	269	18
	Total	1,121	1,545	1,264	1,274	1,245	1,180	1,291	1,483	100
TOTAL										
	Home with parents	2,938	2,721	2,922	2,748	2,902	1,984	2,194	2,155	52
	Friends / relatives	246	294	340	332	345	256	323	362	9
	Former foster carers								17	0
	Adoption	85	74	90	111	210	117	119	133	3
	Supported accommodation / own tenancy	198	343	223	194	213	183	202	206	5
	Other	975	1,308	626	649	352	200	541	532	13
	unknown						826	506	739	18
	Total	4,441	4,740	4,202	4,034	4,021	3,566	3,885	4,144	100

Notes: Table excludes children who are on a planned series of short term placements.

Prior to 2007, table includes some estimates and some 'unknown's where local authorities were not able to provide information.

"Former foster carers" was a new category in 2007. Prior to this, any children in this category are included in "other".

Figures for 2006 are revised.

In 2000 to 2004 children with unknown destinations were allocated to a group rather than being presented as 'unknown'. For this reason, some totals do not exactly equal the sum of their component parts, due to the effects of rounding.

A child may cease to be looked after more than once during the year and will be counted once for each episode of care ending.

City of Edinburgh, Midlothian and South Lanarkshire did not provide this information for 2007. The total number of children ceasing to be looked after in 2006-07 in these authorities has been included as "not known".

Table 2.7: Number of children ceasing to be looked after, by length of time looked after and age, 2000-2007

Age	Length of time looked after	Children ceasing to be looked after in year ending 31st March....								Percentage of 2007 totals
		2000	2001	2002	2003	2004	2005	2006	2007	
Under 1										
	Under 6 weeks	61	27	42	26	72	56	39	55	57
	6 weeks to under 6 months	43	31	25	26	25	28	44	29	30
	6 months to under 1 year	14	20	11	17	9	9	19	13	13
	Total	117	78	78	70	107	93	102	97	100
1-4										
	Under 6 weeks	176	76	193	86	167	126	96	87	14
	6 weeks to under 6 months	97	89	90	56	116	56	67	80	13
	6 months to under 1 year	168	158	92	133	120	93	120	136	22
	1 year to under 3 years	211	234	211	244	184	195	235	254	42
	3 years to under 5 years	37	42	49	54	38	26	48	54	9
	Total	689	600	635	573	625	496	566	611	100
5-11										
	Under 6 weeks	235	155	229	144	169	145	97	105	10
	6 weeks to under 6 months	135	184	144	92	140	80	86	112	11
	6 months to under 1 year	232	271	146	190	189	161	157	185	18
	1 year to under 3 years	377	390	276	385	269	317	400	351	34
	3 years to under 5 years	109	94	110	143	162	114	162	190	18
	5 years and over	53	30	39	61	51	71	84	86	8
	Total	1,140	1,124	943	1,015	979	888	986	1,029	100
12-15										
	Under 6 weeks	233	200	306	151	182	182	140	130	14
	6 weeks to under 6 months	248	229	213	155	180	143	154	146	16
	6 months to under 1 year	264	349	228	217	215	170	164	204	22
	1 year to under 3 years	437	440	388	430	321	285	336	304	33
	3 years to under 5 years	127	111	91	109	120	86	81	82	9
	5 years and over	65	64	56	40	46	41	65	58	6
	Total	1,374	1,393	1,281	1,102	1,065	907	940	924	100
16+										
	Under 6 weeks	46	48	90	33	50	68	18	21	1
	6 weeks to under 6 months	88	91	84	92	121	83	54	104	7
	6 months to under 1 year	175	280	176	175	179	184	194	267	18
	1 year to under 3 years	514	727	535	613	543	510	553	606	41
	3 years to under 5 years	186	248	236	198	223	169	243	243	16
	5 years and over	113	151	143	163	129	166	229	242	16
	Total	1,121	1,545	1,264	1,274	1,245	1,180	1,291	1,483	100
TOTAL										
	Under 6 weeks	750	506	861	440	640	578	390	398	10
	6 weeks to under 6 months	611	625	556	421	583	390	405	471	11
	6 months to under 1 year	852	1,078	652	732	713	617	654	805	19
	1 year to under 3 years	1,539	1,791	1,410	1,672	1,317	1,308	1,524	1,515	37
	3 years to under 5 years	459	496	485	504	543	395	534	569	14
	5 years and over	230	245	237	264	225	278	378	386	9
	Total	4,441	4,740	4,202	4,034	4,021	3,566	3,885	4,144	100

Notes: Table excludes children who are on a planned series of short term placements.

Prior to 2007, table includes estimates wherever local authorities were not able to provide data.

Figures for 2006 are revised.

In 2000 to 2004 some totals do not exactly equal the sum of their component parts due to the effects of rounding estimated figures.

A child may cease to be looked after more than once during the year and will be counted once for each episode of care ending.

Table 2.8: Number of children looked after in a planned series of short-term placements, by gender and age 2000-2007

Age/gender	Children looked after on 31 March...								Percentage of 2007 totals
	2000	2001	2002	2003	2004	2005	2006	2007	
Male									
Under 5	192	188	228	172	89	77	126	123	6
5-11	513	679	517	766	602	520	578	540	25
12-15	269	442	539	530	497	455	486	458	21
16-17	69	146	169	183	202	185	204	206	10
Unknown						5	0	0	0
Total	1,043	1,455	1,454	1,651	1,390	1,242	1,394	1,327	61
Female									
Under 5	137	142	274	141	76	65	95	105	5
5-11	319	414	286	433	312	279	345	330	15
12-15	181	304	492	385	285	260	285	285	13
16-17	46	130	129	161	137	123	101	112	5
Unknown						6	0	0	0
Total	683	990	1,181	1,120	810	733	826	832	39
All people									
Under 5	329	330	502	313	165	142	221	228	11
5-11	832	1,093	804	1,199	914	800	923	870	40
12-15	450	746	1,031	915	782	715	771	743	34
16-17	115	276	297	344	339	308	305	318	15
Unknown						38	0	0	0
Total	1,726	2,445	2,635	2,771	2,201	2,003	2,220	2,159	100

Notes: Prior to 2007, table includes estimates wherever local authorities were not able to provide data.

Figures for 2006 are revised.

In 2005 there were 27 children with unknown gender or age. Consequently the 'all people' total does not equal the sum of the total boys and girls.

In years 2000 - 2004 children with unreported gender or age were allocated to a group rather than being presented as 'unknown'. For this reason, some totals do not exactly equal the sum of their component parts due to the effects of rounding.

Eilean Siar did not provide this information for 2007. There were no children with a current series of short term placements in this local authority on 31st March 06, so it is assumed that there were also no children in this group in 2007.

Table 2.9: Number of children looked after by accommodation, 1971-2007

Year	Accommodation type				All children looked after
	At home	With foster carers or prospective adopters	Other community placement	In residential care	
1971	-	-	-	-	14,788
1972	-	-	-	-	19,166
1973	-	-	-	-	20,703
1974	-	-	-	-	20,553
1975	-	-	-	-	18,936
1976	5,883	3,763	1,430	6,242	17,318
1977	5,593	3,733	1,337	6,209	16,872
1978	-	-	-	-	17,107
1979	-	-	-	-	16,887
1980	-	-	-	-	16,845
1981	-	-	-	-	17,045
1982	-	-	-	-	16,084
1983	-	-	-	-	15,529
1984	-	-	-	-	13,783
1985	-	-	-	-	13,261
1986	-	-	-	-	13,319
1987	5,949	2,759	1,025	2,784	12,517
1988	6,064	2,620	939	2,664	12,287
1989	6,262	2,560	851	2,364	12,037
1990	7,128	2,593	928	2,313	12,962
1991	6,625	2,492	1,147	2,401	12,665
1992	6,527	2,746	1,200	2,298	12,771
1993	6,447	2,574	1,221	2,124	12,371
1994	6,335	2,589	1,121	2,083	12,128
1995	6,224	2,605	1,021	2,042	11,891
1996	6,112	2,620	920	2,001	11,653
1997	6,000	2,635	820	1,960	11,415
1998	5,455	2,794	738	1,817	10,804
1999	5,309	3,155	943	1,784	11,191
2000	5,270	3,181	1,274	1,585	11,309
2001	4,842	3,280	1,195	1,582	10,897
2002	4,909	3,328	1,409	1,595	11,241
2003	4,851	3,468	1,518	1,550	11,388
2004	4,982	3,608	1,518	1,567	11,675
2005	5,179	3,660	1,807	1,539	12,185
2006	5,517	3,915	1,912	1,638	12,982
2007	5,986	4,275	2,138	1,661	14,060

Notes: Table excludes children who are on a planned series of short term placements.

Prior to 2007, table includes estimates wherever local authorities were not able to provide data.

Figures for 2006 are revised.

Table includes rounded estimates for local authorities not able to provide information in all years up to 2004. For this reason, the total for all children looked after may not exactly equal the sum of its component parts.

For cells shown as "-", figures are not available.

Figures are estimates for 1975, 1994, 1995 and 1996.

Young people aged 18-21 are included from 2006 onwards.

Table 3.1: Children starting and ceasing to be looked after, by local authority, 2006-07

Local authority area	Children looked after on 31 March 2007	Children looked after on 31 March 2007 as a percentage of the 0-18 population	Starting to be looked after in 2006-07	Ceasing to be looked after in 2006-07
Aberdeen City	583	1.5	653	192
Aberdeenshire	424	0.8	157	108
Angus	283	1.2	97	67
Argyll & Bute	219	1.1	101	79
Clackmannanshire	182	1.6	59	40
Dumfries & Galloway	419	1.4	172	126
Dundee City	542	1.8	228	151
East Ayrshire	440	1.6	118	104
East Dunbartonshire	101	0.4	39	52
East Lothian	196	0.9	66	72
East Renfrewshire	103	0.5	39	26
Edinburgh, City of	1,228	1.4	373	394
Eilean Siar	49	0.9	16	11
Falkirk	354	1.0	146	80
Fife	720	0.9	275	260
Glasgow City	2,919	2.4	753	579
Highland	501	1.1	211	154
Inverclyde	272	1.5	159	168
Midlothian	302	1.6	209	185
Moray	193	1.0	67	53
North Ayrshire	473	1.5	127	152
North Lanarkshire	755	1.0	289	207
Orkney Isles	25	0.6	16	23
Perth & Kinross	183	0.6	77	53
Renfrewshire	582	1.5	261	170
Scottish Borders	194	0.8	81	64
Shetland	27	0.5	15	14
South Ayrshire	264	1.1	92	80
South Lanarkshire	516	0.7	191	160
Stirling	192	0.9	89	53
West Dunbartonshire	387	1.9	173	126
West Lothian	432	1.1	120	141
Scotland	14,060	1.3	5,469	4,144

Notes: Table excludes children who are on a planned series of short term placements.

Rates per population based on GRO(Scotland) 2006 mid-year population estimates.

A child may start and cease to be looked after more than once during the year and will be counted once for each episode of care starting and ending.

Table 3.2: Characteristics of children looked after by local authority, 31st March 2007

Local authority area	Gender of children looked after			Age of children looked after				Children known to be from minority ethnic groups		Children known to have a disability	
	Male	Female	Percentage male	Number	Percentage	Number	Percentage	Number	Percentage	Number	Percentage
Aberdeen City	324	259	56	143	25	60	10	18	3	107	18
Aberdeenshire	224	200	53	66	16	72	17	2	0	20	5
Angus	149	134	53	77	27	28	10	8	3	9	3
Argyll & Bute	131	88	60	36	16	30	14	6	3	24	11
Clackmannanshire	105	77	58	37	20	28	15	1	1	67	37
Dumfries & Galloway	233	186	56	100	24	44	11	2	0	16	4
Dundee City	310	232	57	141	26	45	8	15	3	35	6
East Ayrshire	224	216	51	63	14	83	19	0	0	30	7
East Dunbartonshire	64	37	63	18	18	21	21	4	4	20	20
East Lothian	120	76	61	33	17	23	12	11	6	7	4
East Renfrewshire	66	37	64	18	17	28	27	5	5	63	61
Edinburgh, City of	678	550	55	244	20	160	13	24	2	77	6
Eilean Siar	23	26	47	6	12	5	10	0	0	16	33
Falkirk	205	149	58	72	20	51	14	4	1	26	7
Fife	392	328	54	171	24	71	10	12	2	31	4
Glasgow City	1,647	1,272	56	469	16	411	14	143	5	457	16
Highland	268	233	53	118	24	51	10	9	2	137	27
Inverclyde	174	98	64	52	19	36	13	8	3	73	27
Midlothian	158	144	52	52	17	41	14	0	0	12	4
Moray	107	86	55	34	18	35	18	3	2	4	2
North Ayrshire	252	221	53	93	20	68	14	6	1	67	14
North Lanarkshire	447	308	59	135	18	143	19	2	0	13	2
Orkney Isles	13	12	52	5	20	2	8	0	0	11	44
Perth & Kinross	104	79	57	30	16	16	9	1	1	28	15
Renfrewshire	299	283	51	100	17	65	11	4	1	50	9
Scottish Borders	121	73	62	46	24	27	14	1	1	17	9
Shetland	13	14	48	6	22	6	22	0	0	22	81
South Ayrshire	154	110	58	52	20	24	9	1	0	117	44
South Lanarkshire	288	228	56	86	17	69	13	0	0	0	0
Stirling	103	89	54	26	14	27	14	3	2	12	6
West Dunbartonshire	213	174	55	59	15	57	15	0	0	6	2
West Lothian	178	254	41	78	18	27	6	10	2	34	8
Scotland	7,787	6,273	55	2,666	19	1,854	13	303	2	1,608	11

Notes: Table excludes children who are on a planned series of short term placements.

'Minority Ethnic Group' includes the ethnic groups Mixed Ethnicity, Black, Asian, and Other Ethnic Background.

Table 3.3: Number of children looked after, by local authority, accomodation type and characteristics of care away from home, 31st March 2007

Local authority area	Accommodation type of all children looked after on 31st March 2007				Children looked after away from home on 31st March 2007				Total
	Children in community setting		Children in residential care		In placement for 1 year +		With 3+ placements		
	Number	Percentage	Number	Percentage	Number	Percentage	Number	Percentage	
Aberdeen City	494	85	89	15	75	17	5	1	429
Aberdeenshire	369	87	55	13	175	77	118	52	227
Angus	255	90	28	10	138	66	56	27	210
Argyll & Bute	165	75	54	25	71	76	3	3	93
Clackmannanshire	166	91	16	9	28	26	25	24	106
Dumfries & Galloway	384	92	35	8	164	76	87	40	216
Dundee City	490	90	52	10	232	67	167	49	344
East Ayrshire	400	91	40	9	190	79	66	27	241
East Dunbartonshire	80	79	21	21	42	69	17	28	61
East Lothian	175	89	21	11	98	83	24	20	118
East Renfrewshire	94	91	9	9	46	98	9	19	47
Edinburgh, City of	1,093	89	135	11	596	77	271	35	773
Eilean Siar	46	94	3	6	15	63	3	13	24
Falkirk	297	84	57	16	142	63	89	40	225
Fife	642	89	78	11	356	71	161	32	501
Glasgow City	2,645	91	274	9	1,343	80	585	35	1,688
Highland	435	87	66	13	218	80	49	18	271
Inverclyde	235	86	37	14	66	52	8	6	127
Midlothian	263	87	39	13	148	74	48	24	201
Moray	168	87	25	13	77	67	38	33	115
North Ayrshire	412	87	61	13	207	82	74	29	252
North Lanarkshire	701	93	54	7	182	92	155	78	198
Orkney Isles	19	76	6	24	5	42	3	25	12
Perth & Kinross	177	97	6	3	79	74	13	12	107
Renfrewshire	493	85	89	15	307	78	62	16	394
Scottish Borders	170	88	24	12	104	75	38	28	138
Shetland	24	89	3	11	15	75	4	20	20
South Ayrshire	224	85	40	15	131	85	23	15	155
South Lanarkshire	407	79	109	21	150	68	9	4	219
Stirling	157	82	35	18	77	61	48	38	126
West Dunbartonshire	330	85	57	15	105	60	15	9	174
West Lothian	389	90	43	10	210	80	70	27	262
Scotland	12,399	88	1,661	12	5,792	72	2,343	29	8,074

Notes: Table excludes children who are on a planned series of short term placements.

Aberdeen City did not provide full information on stability of placements of children looked after away from home. Figures for this section for this local authority are therefore substantial underestimates.

Table 3.4: Number of care leavers beyond minimum school leaving age with at least one qualification at SCQF level 3 or above, 2006-07

Local authority area	Leavers from care at home	Leavers from care away from home	Percentage with at least 1 qualification at SCQF level 3 or above			Change in percentage points since 2005-06		
			Looked after at home	Looked after away from home	Total	Looked after at home	Looked after away from home	Total
Aberdeen City	24	11	38	73	49	-9	25	2
Aberdeenshire	20	20	70	40	55	3	-19	-8
Angus	12	16	50	81	68	50	19	32
Argyll & Bute	10	20	70	80	77	-	27	32
Clackmannanshire	10	2	60	0	50	10	-73	-12
Dumfries & Galloway	33	24	52	67	58	-8	39	15
Dundee City	26	27	42	67	55	2	-6	1
East Ayrshire	37	16	32	19	28	-	-	9
East Dunbartonshire	11	12	36	58	48	-	-	-15
East Lothian	14	14	50	50	50	-17	-29	-26
East Renfrewshire	8	1	63	100	67	-9	-	-5
Edinburgh, City of	59	47	49	74	60	3	17	9
Eilean Siar	4	6	0	17	10			
Falkirk	16	11	50	45	48	0	-	-7
Fife	19	53	32	51	46	-26	-13	-16
Glasgow City	108	57	30	51	37	-11	-2	-8
Highland	20	22	65	64	64	42	-8	15
Inverclyde	29	16	38	69	49	-	-	-
Midlothian	18	17	50	59	54	-	9	23
Moray	8	9	63	89	76	18	44	32
North Ayrshire	15	16	47	38	42	-12	-33	-22
North Lanarkshire	66	11	21	27	22	-7	-30	-11
Orkney Isles	5	6	100	100	100	-	-	-
Perth & Kinross	13	15	46	53	50	-4	-17	-10
Renfrewshire	28	25	79	76	77	26	7	17
Scottish Borders	15	9	40	78	54	-13	-	-3
Shetland	1	0	100	-	100	-	-	-
South Ayrshire	16	20	63	55	58	-4	-15	-9
South Lanarkshire	13	12	85	58	72	37	-17	10
Stirling	8	11	38	91	68	-	53	34
West Dunbartonshire	26	23	50	70	59	0	3	1
West Lothian	20	22	65	64	64	-11	6	-1
Scotland	712	571	45	60	52	0	2	1

Notes: Table excludes children who are on a planned series of short term placements.

Argyll & Bute, East Renfrewshire and Highland provided revised figures for 2005-06.

Where a local authority did not provide data in 2005-06, 2004-05 data has been used instead.

Eilean Siar did not provide information for 2007. 2005-06 figures for this authority have been incorporated into this table, and so no comparison is possible.

Cells containing '-' represent a percentage where the denominator would be zero.

Table 3.5: Number of care leavers beyond minimum school leaving age with qualifications in maths and English, 2006-07

Local authority area	Percentage with maths and English at SCQF level 3 or above			Change in percentage points since 2005-06		
	Looked after at home	Looked after away from home	Total	Looked after at home	Looked after away from home	Total
Aberdeen City	8	45	20	-21	3	-13
Aberdeenshire	30	25	28	-18	-22	-20
Angus	42	63	54	42	0	18
Argyll & Bute	60	60	60	-	-	38
Clackmannanshire	50	0	42	-	-45	8
Dumfries & Galloway	33	50	40	11	-	21
Dundee City	19	67	43	-10	17	5
East Ayrshire	16	13	15	-	-	-
East Dunbartonshire	18	50	35	-	-	-
East Lothian	50	43	46	-	-21	-12
East Renfrewshire	63	100	67	-9	-	-5
Edinburgh, City of	31	64	45	0	27	12
Eilean Siar	0	0	0	-	-	-
Falkirk	25	27	26	-	-	-9
Fife	26	36	33	-6	-9	-7
Glasgow City	15	28	19	-10	-11	-12
Highland	30	45	38	-	-19	0
Inverclyde	28	50	36	-	-	-
Midlothian	28	29	29	28	-	-
Moray	50	44	47	-	-	14
North Ayrshire	33	31	32	-3	-33	-16
North Lanarkshire	12	27	14	-5	-	-4
Orkney Isles	100	67	82	-	67	-
Perth & Kinross	8	47	29	-	-	-6
Renfrewshire	32	60	45	-10	-2	-5
Scottish Borders	27	56	38	-	-	-
Shetland	100	-	100	100	-	-
South Ayrshire	50	45	47	12	5	9
South Lanarkshire	31	25	28	-	-10	0
Stirling	13	82	53	13	51	31
West Dunbartonshire	12	48	29	-	0	-3
West Lothian	35	55	45	-32	6	-11
Scotland	26	45	34	-2	2	0

Notes: Table excludes children who are on a planned series of short term placements.

Argyll & Bute, East Renfrewshire and Highland provided revised figures for 2005-06.

Where a local authority did not provide data in 2005-06, 2004-05 data has been used instead.

Eilean Siar did not provide information for 2007. 2005-06 figures for this authority have been incorporated into this table, and so no comparison is possible.

Cells containing '-' represent a percentage where the denominator would be zero.

Table 3.6: Percentage of care leavers beyond minimum school leaving age with a pathway plan and a pathway co-ordinator, 2006-07

Local authority area	Number of care leavers	Percentage with a pathway plan	Percentage point change since 2005-06	Percentage with a pathway co-ordinator	Percentage point change since 2005-06
Aberdeen City	35	9	9	31	31
Aberdeenshire	40	63	63	43	43
Angus	28	57	-43	57	-43
Argyll & Bute	30	40	10	40	14
Clackmannanshire	12	100	38	100	38
Dumfries & Galloway	60	25	-7	42	-5
Dundee City	53	74	39	83	20
East Ayrshire	53	25	-75	25	-75
East Dunbartonshire	23	22	-3	22	-3
East Lothian	28	43	-3	43	-3
East Renfrewshire	13	100	0	100	0
Edinburgh, City of	116	30	-1	45	-49
Eilean Siar	10	0		0	
Falkirk	27	100	0	100	0
Fife	72	33	8	64	-8
Glasgow City	165	63	-3	38	3
Highland	54	30	-34	30	-9
Inverclyde	45	51	-2	51	-4
Midlothian	35	100	83	100	52
Moray	17	53	36	59	53
North Ayrshire	31	81	51	81	51
North Lanarkshire	77	47	1	55	1
Orkney Isles	11	27	7	45	25
Perth & Kinross	28	79	5	100	27
Renfrewshire	53	4	-96	40	-60
Scottish Borders	24	33	2	42	-11
Shetland	1	0	0	0	0
South Ayrshire	36	100	39	100	39
South Lanarkshire	25	72	18	72	0
Stirling	19	37	-7	37	-15
West Dunbartonshire	50	100	0	100	0
West Lothian	61	25	-44	64	-4
Scotland	1,332	50	0	55	-1

Note: Eilean Siar did not provide information for 2007. 2005-06 figures for this authority have been incorporated into this table, and so no comparison is possible.

Table 3.7: Young people entitled to aftercare, percentage in touch with social services and percentage in employment, education or training, 2006-07

Local authority area	People entitled to aftercare support	Per cent still in touch with social services	In employment, education or training	
			As percentage of those with known economic activity	As percentage of all entitled to aftercare support
Aberdeen City	71	100	-	0
Aberdeenshire	55	100	51	35
Angus	69	100	44	32
Argyll & Bute	28	71	73	39
Clackmannanshire	19	100	50	32
Dumfries & Galloway	160	95	31	21
Dundee City	98	100	27	27
East Ayrshire	87	94	28	26
East Dunbartonshire	28	75	62	46
East Lothian	82	63	29	18
East Renfrewshire	20	100	70	70
Edinburgh, City of	570	90	36	20
Eilean Siar	5	100	60	60
Falkirk	48	100	34	23
Fife	257	47	33	15
Glasgow City	619	93	48	32
Highland	96	98	21	16
Inverclyde	87	100	35	30
Midlothian	35	100	55	34
Moray	28	93	40	36
North Ayrshire	97	100	42	37
North Lanarkshire	55	100	24	24
Orkney Isles	12	100	58	58
Perth & Kinross	77	99	57	56
Renfrewshire	136	68	33	21
Scottish Borders	29	100	31	31
Shetland	14	93	46	43
South Ayrshire	75	47	34	16
South Lanarkshire	93	100	29	29
Stirling	64	100	38	20
West Dunbartonshire	77	90	46	40
West Lothian	225	100	26	9
Scotland	3,416	88	38	25

Notes: Eilean Siar and North Lanarkshire did not provide this information. 2005-06 figures for these authorities have been incorporated into this table.

Scottish Borders included only those young people receiving aftercare, rather than all young people that were eligible.

Cells containing '-' represent a percentage where the denominator would be zero.