

# Statistics Publication Notice

Health and Care Series

ISSN 1479-7569 (*online*)

## **SECURE ACCOMMODATION STATISTICS 2006-07**

13 September 2007

### **A National Statistics Publication for Scotland**

This publication presents statistics on secure accommodation in Scotland. Headline messages are:

- During 2006-07 a new secure unit opened (Good Shepherd), providing an additional 18 secure places. Therefore at 31<sup>st</sup> March 2007 six secure units provided a total of 112 secure places, not including emergency beds.
- There was an average of 94 residents in secure accommodation throughout 2006-07, up from 81 in 2005-06.
- The average cost per bed per week was £4,400, ranging from £4,000 to £4,900. The estimated annual cost for secure accommodation in Scotland, based on usage, was £22.0 million in 2006-07, a 36 per cent increase from the previous year in real terms.
- Forty four per cent of all young people admitted to secure accommodation during 2006-07 were 15 years old.
- On the 31<sup>st</sup> March 2007, there were 596 staff working across the secure estate, of which 15 were temporary. There were 18 vacancies, of which seven had been vacant for more than three months.

## **SECURE ACCOMMODATION UNITS – CAPACITY AND USAGE**

1. At 31<sup>st</sup> March 2007 there were six secure units providing a total of 112 secure places. (Table 1, Chart 1)
2. There was an average of 94 residents in secure accommodation throughout 2006-07, up from 81 the previous year. (Table 2)
3. The number of young people in secure accommodation throughout the year ranged from 76 to 108. (Table 2)
4. There were 307 admissions to secure accommodation in 2006-07. This is an increase of 22.3 per cent on 2005-06. There was also a 10.3 per cent increase in the number of discharges, to 278. (Table 2, Chart 1)
5. Good Shepherd secure unit opened on 31<sup>st</sup> August 2006, and this was followed by a slight increase in admissions in September 2006. The highest number of admissions and discharges during the year occurred during June 2006 and January 2007 respectively. (Chart 2, Chart 3)
6. Seventy four per cent of young people in secure accommodation on 31<sup>st</sup> March 2007 were boys. (Table 4)
7. Ninety three per cent of young people in secure accommodation on 31<sup>st</sup> March 2007 had at least one known disability. (Table 4) All of these were known to have social, emotional and behavioural difficulties.

## **SECURE ACCOMMODATION UNITS – COSTS AND STAFFING**

8. The average cost per bed per week during 2006-07 was £4,400. The annual cost for secure accommodation in Scotland has been estimated, based on usage, as £22.0 million in 2006-07. This is a 39 per cent increase in nominal terms on the cost in 2005-06, or a 36 per cent increase in real terms.
9. On the 31<sup>st</sup> March 2007, there were 596 staff working across the secure estate, of which 15 were temporary. There were 18 vacancies, of which seven had been vacant for more than three months. (Table 3)

## **YOUNG PEOPLE ADMITTED TO SECURE ACCOMMODATION**

10. Forty four per cent of children admitted to secure accommodation during the year were admitted when they were 15 years old. The proportion of children admitted at age 16 or over increased from 11 per cent in 2005-06 to 18 per cent in 2006-07. (Table 5)
11. Where the number of previous spells in secure accommodation was known, 41 per cent of admissions were to young people with at least one previous spell in secure accommodation.
12. Thirty nine per cent of young people admitted to secure accommodation during the year were previously living with parents, other relatives or friends. Girls were more likely than boys to be admitted from foster care or a children's home; boys were more likely to be admitted from the parental home, relatives or friends. (Table 7)
13. The proportion of young people admitted to secure accommodation that were previously living with parents, other relatives or friends has increased almost constantly since 2000. (Table 8)

## **YOUNG PEOPLE DISCHARGED FROM SECURE ACCOMMODATION**

14. Thirty one per cent of young people discharged during 2006-07 had been in secure accommodation for less than 1 month, up two percentage points from the previous year. Three per cent had been in secure accommodation for more than 12 months, a slight decrease on the previous year. (Table 5, Chart 4)
15. Twenty three per cent of all young people leaving secure accommodation in 2006-07 returned to the same type of placement as they were in before being admitted. (Table 9)
16. Ninety per cent of young people discharged during 2006-07 received medical care during their spell in secure accommodation. The percentage receiving medical care ranged from 80 per cent of those in secure accommodation for less than one month to 100 per cent of those who had been in secure accommodation for more than a year. (Table 11, Chart 5)

**The following charts are available:**

Chart 1 – Places, admissions and discharges: 1999-00 to 2006-07

Chart 2 - Admissions to secure accommodation by month, 2005-06 and 2006-07

Chart 3 – Discharges from secure accommodation by month, 2005-06 and 2006-07

Chart 4 – Length of stay on discharge as a percentage of young people discharged during the year ending 31<sup>st</sup> March, 2000 to 2007

Chart 5 – Percentage of discharged young people who received medical care, agreed aftercare plan, discharge date and place were as agreed, by length of stay in secure accommodation, 2006-07

**The following tables are available:**

Table 1: Secure accommodation establishments 2006-07

Table 2: Secure accommodation capacity and usage 2000-2007

Table 3: Secure accommodation staff as at 31<sup>st</sup> March 2007 and 31<sup>st</sup> March 2006

Table 4: Young people in secure accommodation on 31<sup>st</sup> March 2000-2007 by gender, age, disability and length of stay

Table 5: Young people admitted to or discharged from secure accommodation during the years ending 31<sup>st</sup> March 2000-2007 by age and length of stay

Table 6: Number of young people admitted to secure accommodation 2006-07 by local authority

Table 7: Young people admitted to secure accommodation: Placement prior to admission and reason for admission, by gender, 2006-07

Table 8: Placement prior to admission and placement on discharge for young people admitted to or discharged from secure accommodation in the years ending 31<sup>st</sup> March 2000-2007

Table 9: Percentage of young people discharged from secure accommodation whose placement on discharge was the same as placement prior to admittance, 2006-07

Table 10: Number and percentage of young people discharged from secure accommodation during 2006-07 who received medical care during their stay

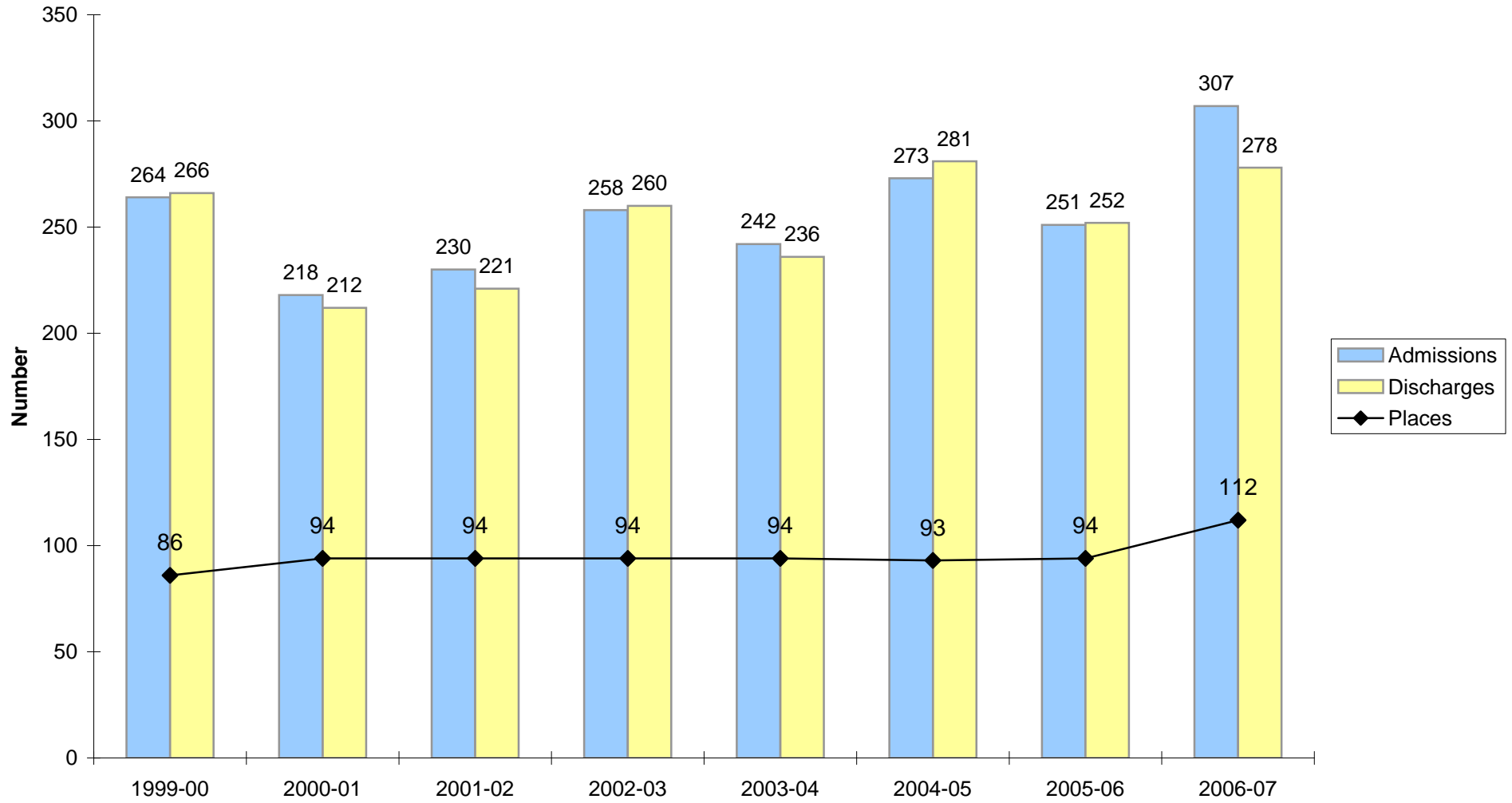
Table 11: Percentage of young people discharged from secure accommodation who received medical care and agreed aftercare plan during spell in secure accommodation, and for whom discharge date and placement on discharge were as agreed in aftercare plan, by length of stay, 2006-07

**BACKGROUND NOTES**

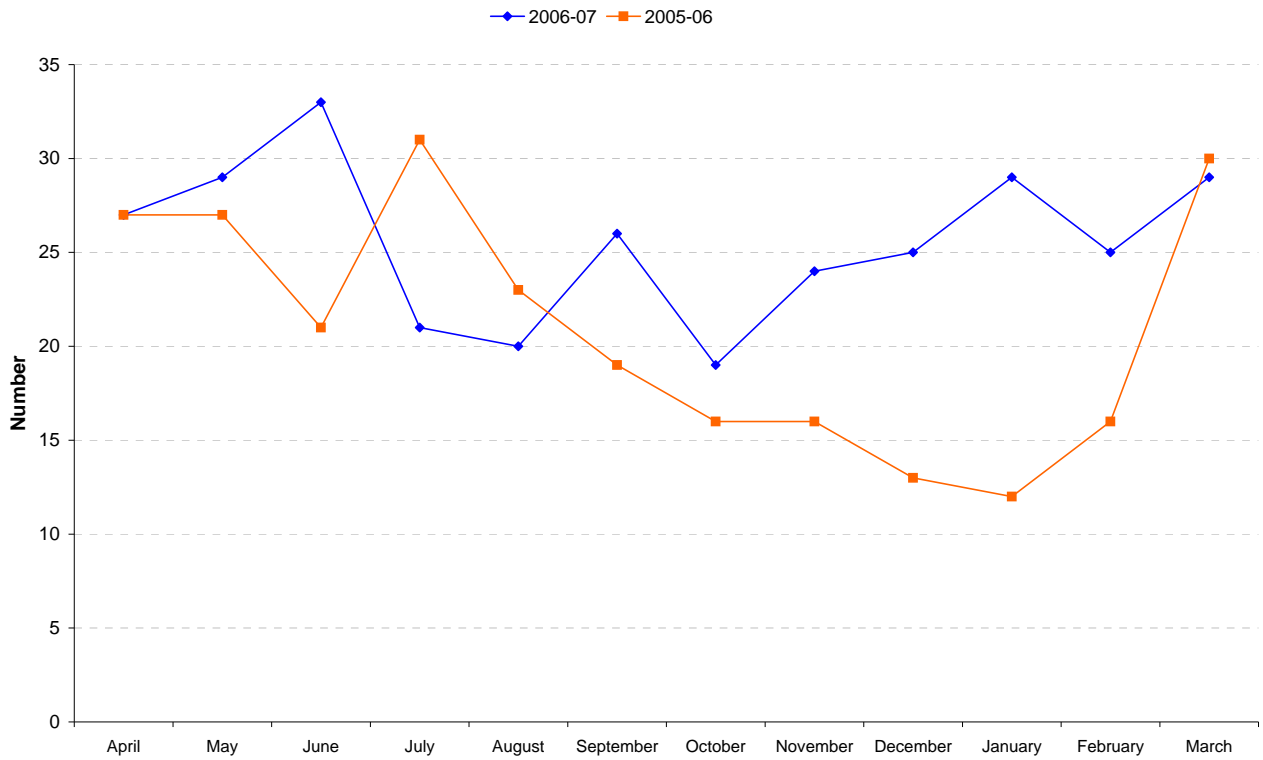
- 1 The survey forms and guidance notes for data presented in this publication, and previous years' publications, can be seen at [www.scotland.gov.uk/childrenstats](http://www.scotland.gov.uk/childrenstats)
- 2 Good Shepherd secure unit opened on 31<sup>st</sup> August 2006. The increase in admissions to secure accommodation between 2005-06 and 2006-07 is consistent with the increase in the number of beds.
- 3 The average number of young people in secure accommodation over the year is calculated using the dates of entry and discharge for every child. Similarly, the estimated annual cost of secure accommodation over the year is calculated using the dates of entry and discharge for every child and the average cost of a secure bed in that unit.

- 4 Centres were asked to provide only the month and year of birth of young people admitted. In the 2006-07 data the young person's date of birth has been set to the 15th day of the month, so that on average young people's ages at admission will be correct. In previous years the date of birth had been set to the last day of the month. For this reason, roughly 1/24 (four per cent) of young people admitted in 2007 will appear a year older than they would have by the method used in 2006.
- 5 This is a National Statistics publication. National Statistics are produced to high professional standards set out in the National Statistics Code of Practice. They undergo regular quality assurance reviews to ensure that they meet customer needs. They are produced free from any political interference.
- 6 Public enquiries (**non-media**) about the information contained in this Publication Notice should be addressed to:  
Rosie Telford  
Children, Young People and Social Care Statistics  
The Scottish Government  
1-B (South)  
Victoria Quay  
Edinburgh EH6 6QQ  
Telephone: 0131 244 0314  
e-mail: [children.statistics@scotland.gsi.gov.uk](mailto:children.statistics@scotland.gsi.gov.uk)
- 7 **Media** enquiries about the information in this Statistics Publication Notice should be addressed to Victoria Quinn on 0131 244 2939.

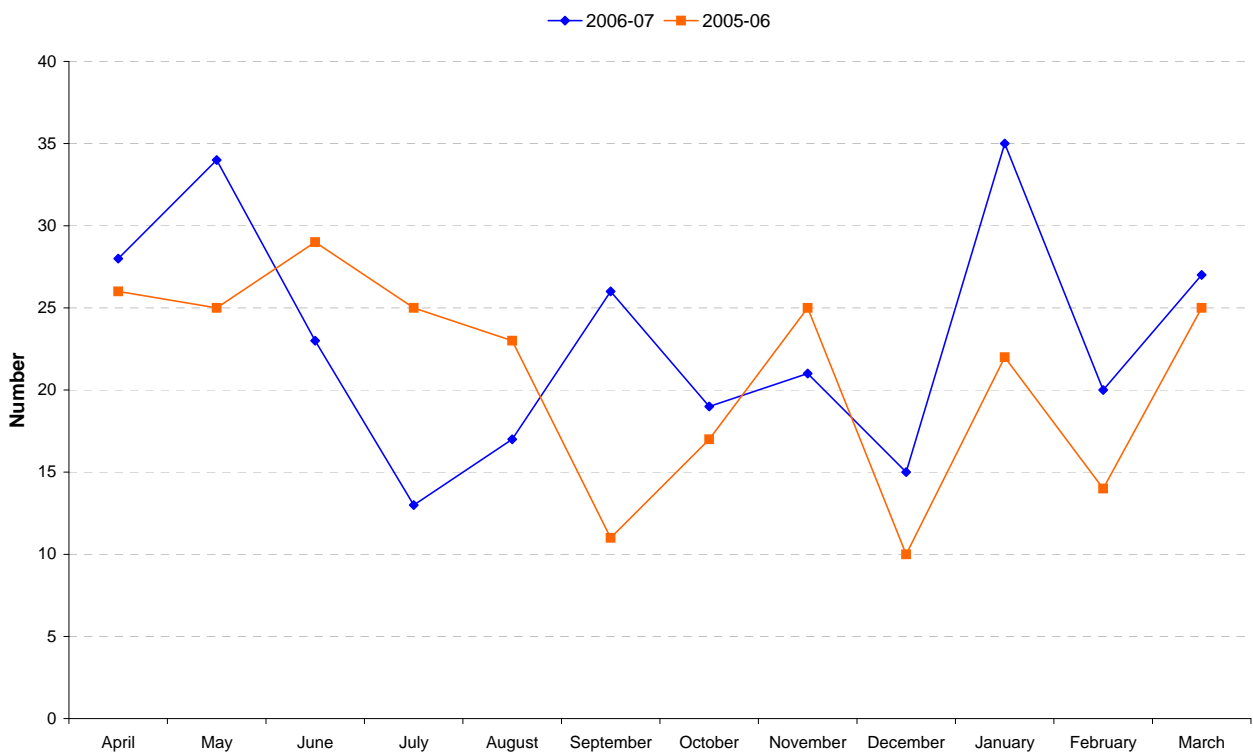
Chart 1: Places, admissions and discharges 1999-00 to 2006-07



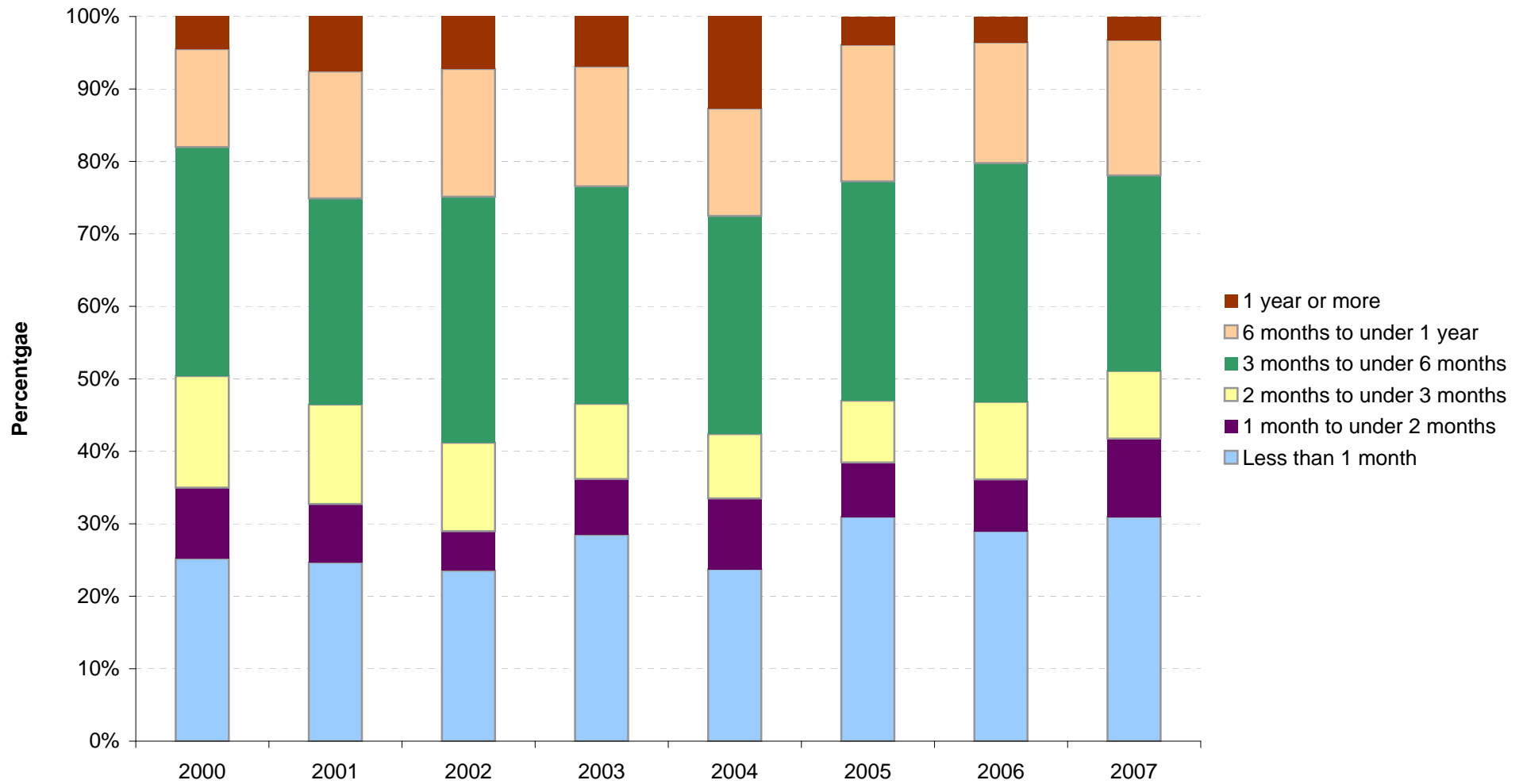
**Chart 2: Admissions to secure accommodation by month, 2005-06 and 2006-07**



**Chart 3: Discharges from secure accommodation by month, 2005-06 and 2006-07**

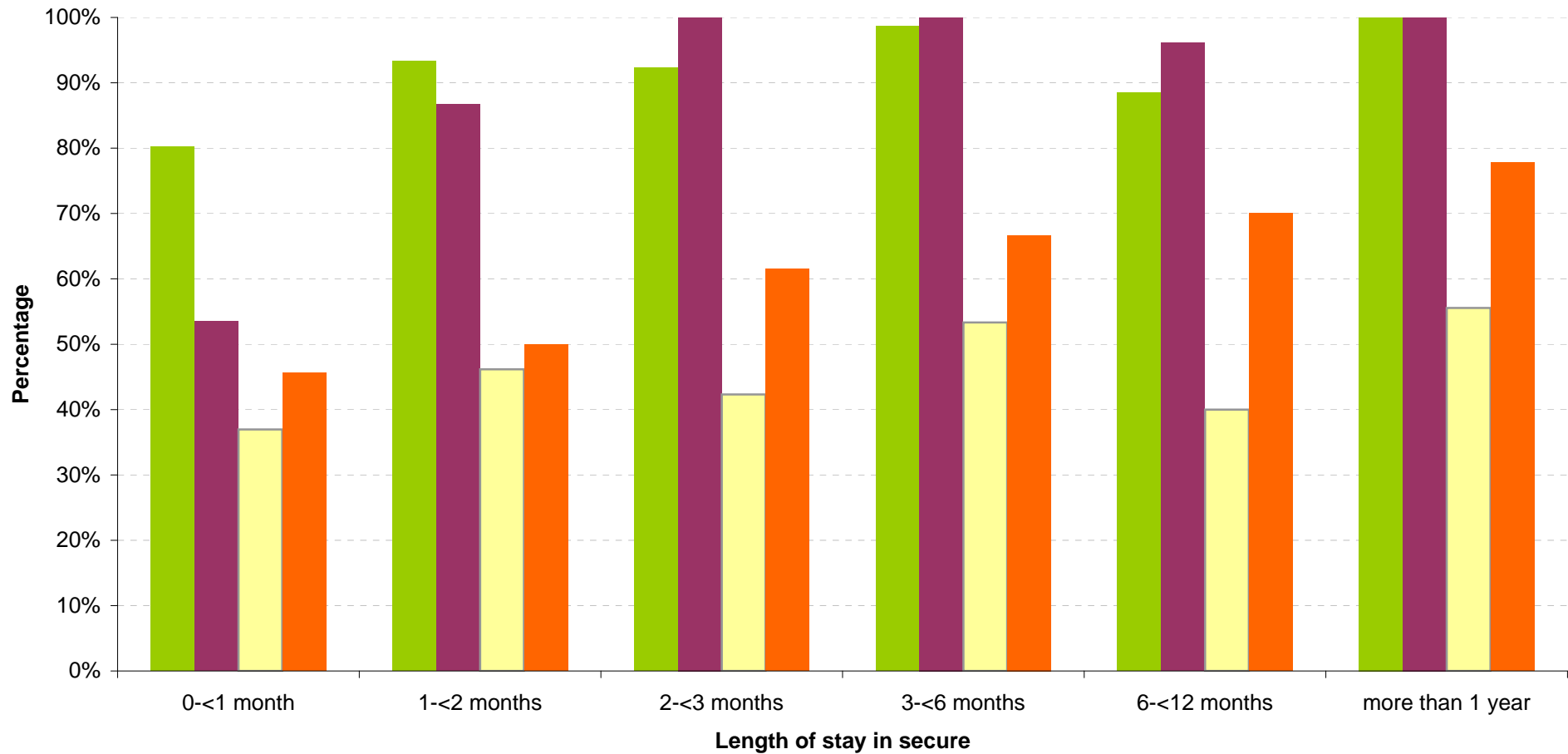


**Chart 4: Length of stay on discharge as a percentage of young people discharged during the year ending 31st March, 2000-2007**





**Chart 5: Percentage of discharged young people who received medical care, agreed aftercare plan, discharge date and place were as agreed, by length of stay in secure accommodation, 2006-07**



**Table 1: Secure accommodation establishments 2006-07**

	<b>Bed Complement</b>
Edinburgh Secure Services	12
The Elm's Close Support Unit	4
Good Shepherd	18
Rossie School	24
St Mary's Kenmure	30
St Phillip's	24
<b>ALL (at 31st March 2007)</b>	<b>112</b>

Note: Bed complement excludes emergency beds and beds outwith the secure section of any unit. St. Mary's Kenmure and Rossie each have one emergency bed. Good Shepherd opened on 31st August 2006 and is included in the sum of all beds.

**Table 2: Secure accommodation capacity and usage 2000-2007**

	Statistics relating to the year ending 31st March...								% change 2006-2007
	2000	2001	2002	2003	2004	2005	2006	2007	
Places at 31st March	86	94	94	94	94	93	94	112	19.1%
Admissions during the year	264	218	230	258	242	273	251	307	22.3%
Discharges during the year	266	212	221	260	236	281	252	278	10.3%
Average number of residents during the year	80	85	93	92	92	87	81	94	16.0%
Minimum number of residents during the year	70	74	84	83	83	76	73	76	4.1%
Maximum number of residents during the year	89	93	99	105	100	95	90	108	20.0%

Note: Average, maximum and minimum number of residents decreased in 2005 due in part to improvements in data reporting.

The figure for discharges in 2004 was incorrect in previous publications and has been amended.

**Table 3: Secure accommodation staff as at 31st March 2007 and 31st March 2006**

<b>2007</b>	Care staff		Teachers/Instructors		Other staff		Total
	Full time	Part time	Full time	Part time	Full time	Part time	
Permanent Staff	318	54	54	8	119	28	<b>581</b>
Temporary Staff	6	4	3	2	0	0	<b>15</b>
<b>Total number of staff</b>	<b>324</b>	<b>58</b>	<b>57</b>	<b>10</b>	<b>119</b>	<b>28</b>	<b>596</b>
Current vacancies	7	4	3	0	2	2	<b>18</b>
...of which were long term	0	4	0	0	1	2	<b>7</b>
Vacancies as a % of all posts	2.1%	6.5%	5.0%	0.0%	1.7%	6.7%	<b>2.9%</b>

<b>2006</b>	Care staff		Teachers/Instructors		Other staff		Total
	Full time	Part time	Full time	Part time	Full time	Part time	
Permanent Staff	255	32	39	5	91	22	<b>444</b>
Temporary Staff	13	3	0	4	1	1	<b>22</b>
<b>Total number of staff</b>	<b>268</b>	<b>35</b>	<b>39</b>	<b>9</b>	<b>92</b>	<b>23</b>	<b>466</b>
Current vacancies	4	7	5	0	2	2	<b>20</b>
...of which were long term	1	4	0	0	1	2	<b>8</b>
Vacancies as a % of all posts	1.5%	16.7%	11.4%	0.0%	2.1%	8.0%	<b>4.1%</b>

Note: Long-term vacancies are those lasting more than 3 months.

Figures for current vacancies in the 2006 publication were incorrect and have been amended.

**Table 4: Young people in secure accommodation at 31st March 2000-2007 by gender, age, disability and length of stay**

NUMBER	2000	2001	2002	2003	2004	2005	2006	2007
<b>Gender of residents</b>								
Boys	71	63	69	69	67	54	62	78
Girls	16	23	27	21	24	29	20	28
<b>Age of Residents</b>								
13 years old or under	7	13	17	12	8	10	11	13
14 years	20	16	13	13	18	16	19	19
15 years	38	31	40	40	36	38	33	42
16 years or over	22	26	26	25	29	19	19	32
<b>Residents with disabilities</b>								
Any disability								99
<b>Length of stay of residents</b>								
Less than 1 month	17	22	16	17	23	22	25	28
1 month to under 2 months	13	8	13	20	16	12	9	21
2 months to under 3 months	12	11	16	7	6	8	7	12
3 months to under 6 months	22	20	25	21	27	24	20	27
6 months to under 1 year	12	14	17	15	10	11	17	14
1 year or more	11	11	9	10	9	6	4	4
<b>Total</b>	<b>87</b>	<b>86</b>	<b>96</b>	<b>90</b>	<b>91</b>	<b>83</b>	<b>82</b>	<b>106</b>

PERCENTAGE	2000	2001	2002	2003	2004	2005	2006	2007
<b>Gender of residents</b>								
Boys	82%	73%	72%	77%	74%	65%	76%	74%
Girls	18%	27%	28%	23%	26%	35%	24%	26%
<b>Age of Residents</b>								
13 years old or under	8%	15%	18%	13%	9%	12%	13%	12%
14 years	23%	19%	14%	14%	20%	19%	23%	18%
15 years	44%	36%	42%	44%	40%	46%	40%	40%
16 years or over	25%	30%	27%	28%	32%	23%	23%	30%
<b>Residents with disabilities</b>								
Any disability								93%
<b>Length of stay of residents</b>								
Less than 1 month	20%	26%	17%	19%	25%	27%	30%	26%
1 month to under 2 months	15%	9%	14%	22%	18%	14%	11%	20%
2 months to under 3 months	14%	13%	17%	8%	7%	10%	9%	11%
3 months to under 6 months	25%	23%	26%	23%	30%	29%	24%	25%
6 months to under 1 year	14%	16%	18%	17%	11%	13%	21%	13%
1 year or more	13%	13%	9%	11%	10%	7%	5%	4%
<b>Total</b>	<b>100%</b>	<b>100%</b>	<b>100%</b>	<b>100%</b>	<b>100%</b>	<b>100%</b>	<b>100%</b>	<b>100%</b>

Note: Length of stay is truncated at the 31st March.

Comparable data on disability is not available prior to 2007.

**Table 5: Young people admitted to or discharged from secure accommodation during the years ending 31st March 2000-2007 by age and length of stay**

NUMBER	Statistics relating to the year ending 31 March...							
	2000	2001	2002	2003	2004	2005	2006	2007
<b>Admissions during the year (by age on admission)</b>								
13 years old or under	36	41	44	46	52	41	33	38
14 years	77	56	51	65	61	69	64	79
15 years	121	96	108	123	103	134	126	136
16 years or over	30	25	27	24	26	29	28	54
<b>Total</b>	<b>264</b>	<b>218</b>	<b>230</b>	<b>258</b>	<b>242</b>	<b>273</b>	<b>251</b>	<b>307</b>
<b>Discharges during the year (by length of stay on discharge)</b>								
Less than 1 month	67	52	52	74	56	87	73	86
1 month to under 2 months	26	17	12	20	23	21	18	30
2 months to under 3 months	41	29	27	27	21	24	27	26
3 months to under 6 months	84	60	75	78	71	85	83	75
6 months to under 1 year	36	37	39	43	35	53	42	52
1 year or more	12	16	16	18	30	11	9	9
<b>Total</b>	<b>266</b>	<b>212</b>	<b>221</b>	<b>260</b>	<b>236</b>	<b>281</b>	<b>252</b>	<b>278</b>
<b>PERCENTAGE</b>								
<b>Admissions during the year (by age on admission)</b>								
13 years old or under	14%	19%	19%	18%	21%	15%	13%	12%
14 years	29%	26%	22%	25%	25%	25%	25%	26%
15 years	46%	44%	47%	48%	43%	49%	50%	44%
16 years or over	11%	11%	12%	9%	11%	11%	11%	18%
<b>Total</b>	<b>100%</b>	<b>100%</b>	<b>100%</b>	<b>100%</b>	<b>100%</b>	<b>100%</b>	<b>100%</b>	<b>100%</b>
<b>Discharges during the year (by length of stay on discharge)</b>								
Less than 1 month	25%	25%	24%	28%	24%	31%	29%	31%
1 month to under 2 months	10%	8%	5%	8%	10%	7%	7%	11%
2 months to under 3 months	15%	14%	12%	10%	9%	9%	11%	9%
3 months to under 6 months	32%	28%	34%	30%	30%	30%	33%	27%
6 months to under 1 year	14%	18%	18%	17%	15%	19%	17%	19%
1 year or more	5%	8%	7%	7%	13%	4%	4%	3%
<b>Total</b>	<b>100%</b>	<b>100%</b>	<b>100%</b>	<b>100%</b>	<b>100%</b>	<b>100%</b>	<b>100%</b>	<b>100%</b>

Note: Young people can be admitted and discharged more than once within a year

The increase in the proportion of 16 year olds and decrease in the proportion of 13 year olds admitted in 2006-07 may be due in part to a slight change in methodology. For details, see background note.

In 2001 the total number of discharges is one more than the sum of its parts due to one case where length of stay has not been recorded.

**Table 6: Number of young people admitted to secure accommodation 2006-07 by local authority**

Local Authority of young person's home	Frequency
Aberdeen City	11
Aberdeenshire	10
Angus	7
Argyll & Bute	< 5
Clackmannanshire	8
Dumfries & Galloway	5
Dundee City	18
East Ayrshire	9
East Dunbartonshire	9
East Lothian	< 5
East Renfrewshire	0
Edinburgh City	49
Eilean Siar	0
Falkirk	< 5
Fife	15
Glasgow City	67
Highland	< 5
Inverclyde	< 5
Midlothian	< 5
Moray	< 5
North Ayrshire	14
North Lanarkshire	< 5
Orkney Islands	0
Perth & Kinross	<5
Renfrewshire	14
Scottish Borders	0
Shetland Islands	0
South Ayrshire	5
South Lanarkshire	8
Stirling	< 5
West Dunbartonshire	10
West Lothian	9
Unknown or outwith Scotland	8
<b>Total</b>	<b>307</b>

Note: Figures less than 5 suppressed to maintain confidentiality.

Young people are counted once for each time they are admitted to secure accommodation.

**Table 7: Young people admitted to secure accommodation:  
Placement prior to admission and reason for admission, by gender, 2006-07**

Placement Prior to admissions during the year							
Gender	Parental home, relatives or friends	Foster care or children's home	Residential school	Young offenders institution or prison	Secure accommodation	Other or unknown	Total
Boys	97	22	39	*	18	*	211
Girls	23	24	20	*	14	*	96
<b>Total</b>	<b>120</b>	<b>46</b>	<b>59</b>	<b>25</b>	<b>32</b>	<b>25</b>	<b>307</b>

Legal reason for admissions during the year								
Gender	Section 44(1)	Section 205	Section 208	Section 70(9)	Place of safety order or warrant	Authority of the Director of Social Work	Other or unknown	Total
Boys	*	0	*	49	63	52	*	211
Girls	*	0	*	29	36	13	*	96
<b>Total</b>	<b>3</b>	<b>0</b>	<b>16</b>	<b>78</b>	<b>99</b>	<b>65</b>	<b>46</b>	<b>307</b>

Note: Cells containing \* represent numbers suppressed to maintain confidentiality.

Table includes admissions made after 31/03/2006 and before 01/04/2007

A single child may be admitted more than once during the year.

'Other' placement prior to admission may include supported accommodation, independent living, hospital or assessment centre.

Legal reason for admission:

Order made under section 44(1) of the Criminal Procedure (Scotland) Act 1995

Order made under section 205 of the Criminal Procedure (Scotland) Act 1995

Order made under section 208 of the Criminal Procedure (Scotland) Act 1995

Order made under section 70(9) of the Children (Scotland) Act 1995, to which is attached a condition authorising the use of Secure Accommodation.

Place of safety order or warrant made under the Children (Scotland) Act 1995, authorising the use of Secure Accommodation.

Committal to a Place of Safety or other temporary detention is made under the Criminal Procedure (Scotland) Act 1995, the authority of the Director of Social Work and the person in charge of the establishment, pending the convening of a Children's Hearing to consider the case.

**Table 8: Placement prior to admission and placement on discharge for young people admitted to or discharged from secure accommodation in the years ending 31st March 2000-2007**

	2000	2001	2002	2003	2004	2005	2006	2007
<b>Placement prior to admission</b>								
Parental home / Relative / Friend	13%	17%	18%	25%	26%	37%	33%	39%
Foster care / Children's home	34%	17%	27%	21%	24%	20%	12%	15%
Residential school	25%	34%	25%	24%	13%	17%	9%	19%
Young offenders institution / Prison	4%	5%	8%	6%	10%	3%	3%	8%
Secure care	13%	14%	6%	11%	8%	8%	7%	10%
Other placement	10%	10%	13%	13%	15%	10%	3%	7%
Not known	1%	3%	3%	0%	2%	4%	33%	1%
<b>Total</b>	<b>100%</b>	<b>100%</b>	<b>100%</b>	<b>100%</b>	<b>100%</b>	<b>100%</b>	<b>100%</b>	<b>100%</b>
<b>Placement on discharge</b>								
Parental home / Relative / Friend	19%	40%	35%	29%	34%	44%	39%	41%
Foster care / Children's home	26%	8%	16%	12%	14%	14%	14%	8%
Residential school	22%	27%	18%	26%	12%	11%	10%	15%
Young offenders institution / Prison	3%	3%	3%	4%	8%	4%	6%	3%
Secure care	12%	4%	6%	11%	6%	5%	11%	6%
Other placement	17%	18%	23%	18%	27%	15%	20%	26%
Not known	0%	0%	0%	0%	0%	7%	0%	0%
<b>Total</b>	<b>100%</b>	<b>100%</b>	<b>100%</b>	<b>100%</b>	<b>100%</b>	<b>100%</b>	<b>100%</b>	<b>100%</b>

Note: Data for each year include admissions or discharges made after 31st March of the previous year and before 1st April of the year itself.

A single child may be admitted more than once during the year.

'Other' placement prior to admission may include supported accommodation, independent living, hospital or assessment centre.



**Table 9: Percentage of young people discharged from secure accommodation whose placement on discharge was the same as placement prior to admittance, 2006-07**

Placement on discharge same as placement prior to admittance	Length of stay on discharge (months)				All
	0 to 1	1 to <3	3 to <6	more than 6	
Yes	44%	20%	15%	8%	23%
No	45%	64%	67%	61%	58%
Not known	10%	16%	19%	31%	18%

Note: A single child may be admitted and discharged more than once during the year.

**Table 10: Number and percentage of young people discharged from secure accommodation during 2006-07 who received medical care during their stay.**

	Number of young people	% of all young people	% of those receiving medical care
<b>Any medical care</b>	<b>250</b>	<b>90%</b>	<b>100%</b>
General health discussion or advice	209	75%	84%
Immunisations	12	4%	5%
Dental check-up or treatment	221	80%	88%
Mental health care or treatment	38	14%	15%
Sexual health care or treatment	99	36%	40%
Care or treatment to assist mental well-being	108	39%	43%
General physical health care or treatment	125	45%	50%
Medical care or treatment received - details unknown	98	35%	39%

Note: This table excludes cases where it was not known whether the young person had received a particular treatment.

**Table 11: Percentage of young people discharged from secure accommodation who received medical care and agreed aftercare plan during spell in secure accommodation, and for whom discharge date and placement on discharge were as agreed in aftercare plan, by length of stay, 2006-07**

Length of time spent in secure	0-<1 month	1-<2 months	2-<3 months	3-<6 months	6-<12 months	more than 1 year	All
Received medical care during spell in secure	80%	93%	92%	99%	88%	100%	<b>90%</b>
Aftercare plan was agreed during spell in secure	53%	87%	100%	100%	96%	100%	<b>83%</b>
Discharge date was as agreed in aftercare plan	37%	46%	42%	53%	40%	56%	<b>45%</b>
Placement on discharge was as agreed in aftercare plan	46%	50%	62%	67%	70%	78%	<b>61%</b>

Length of time spent in secure	0-<1 month	1-<2 months	2-<3 months	3-<6 months	6-<12 months	more than 1 year	All
<b>Did not</b> receive medical care during spell in secure	8%	0%	0%	0%	0%	0%	<b>3%</b>
Aftercare plan was <b>not</b> agreed during spell in secure	44%	7%	0%	0%	4%	0%	<b>15%</b>
Discharge date was <b>not</b> as agreed in aftercare plan	35%	38%	27%	28%	38%	33%	<b>33%</b>
Placement on discharge was <b>not</b> as agreed in aftercare plan	13%	15%	0%	8%	6%	11%	<b>9%</b>

Length of time spent in secure	0-<1 month	1-<2 months	2-<3 months	3-<6 months	6-<12 months	more than 1 year	All
<b>Unknown</b> if received medical care during spell in secure	12%	7%	8%	1%	12%	0%	<b>8%</b>
<b>Unknown</b> if aftercare plan was agreed during spell in secure	2%	7%	0%	0%	0%	0%	<b>1%</b>
<b>Unknown</b> if discharge date was as agreed in aftercare plan	28%	15%	31%	19%	22%	11%	<b>22%</b>
<b>Unknown</b> if placement on discharge was as agreed in aftercare plan	41%	35%	38%	25%	24%	11%	<b>30%</b>

Note: Percentage of young people whose date of discharge and placement on discharge was as agreed in aftercare plan were calculated as a percentage of those with an aftercare plan.